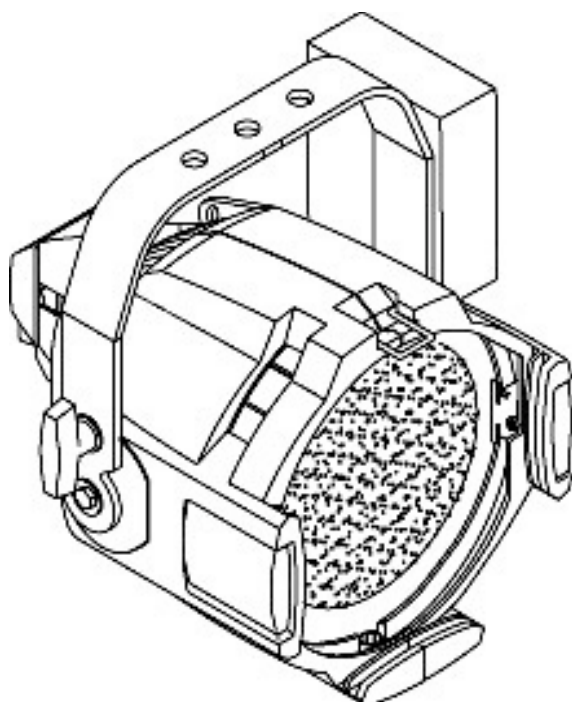


Source Four HID PARNeI™ User Guide



Source Four HID PARNeI guidelines

Please note the following precautions prior to use:

- Do not mount the Source Four HID PARNeI on or near combustible surfaces.
- Do not recess mount the Source Four HID PARNeI.
- The Source Four HID PARNeI can be canopy mounted from the ceiling.
- Always hang the Source Four HID PARNeI with the color frame retaining clip in the locked position.
- The Source Four HID PARNeI is **NOT** dimmable. Dimming or regulated voltage will damage the ballast and void the warranty.

Accessories

	ETC Part #
Color frame 7.5 in. sq.(6.7 in. inside diameter)	7061A3047
Safety cable (31 in.)	7061A1022
C-clamp	7060A2009
Top hat, 3"	PSF1022
Top hat, 6"	PSF1023
Half hat	PSF1027
Cross-baffle top hat	PSF1031
Egg-crate louver	PSF1028
Weighted base	PSF1032
Gel Extender 3"	PSF1030
Gel Extender 6"	PSF1029
Barn door	PSF1019



HID Lamp type and general information:

Do not use lamps other than the following types in the Source Four HID PARnel. Use of lamps other than specified below will void UL/cUL safety compliance and your warranty.

Lamp Type	Manufacturing Codes	Watts	Base	Bulb	LCL	Ave. Hrs.	Initial lumens	Color temp
Ceramic Metal Halide	CDM-T 150W/830	150	G12	T6	56mm	9000	14000	3000°K
	CDM-T 150W/942	150	G12	T6	56mm	9000	12700	4000°K
	MD150T6/U/G12/830	150	G12	T6	56mm	9000	14000	3000°K
	MBI150/T/30	150	G12	T7	57mm	6000	11500	3000°K
	MBI150/T/40	150	G12	T7	57mm	6000	11250	4000°K

Installing the lamp

1. Disconnect power to the Source Four HID PARnel before installing the lamp.
2. Loosen the knurled bolt on the back of the lamp housing and pull the housing out.
3. Holding it by the base, remove the lamp from its box.



Note: To avoid premature lamp failure, do not touch the lamp glass with your fingers. If you touch the lamp during installation, clean it carefully with rubbing alcohol and a clean, lint-free cloth before operation.

4. Insert lamp base into socket assembly. (**Figure 1**)
5. Push down on the lamp base until the lamp seats firmly.
6. Reinstall the lamp housing by aligning the bolt hole and tightening the knurled bolt.

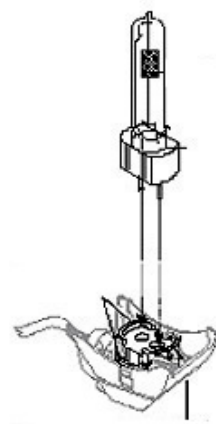


Figure 1



CAUTION: Replace the lamp if it becomes damaged or thermally deformed.

Improperly installed lamps will cause premature lamp and socket failures.

Ballast information

- The only acceptable voltage is 120V (+/- 10%) 50/60HZ.
- The standard operating current is 1.5 Amps.
- The standard inrush current is <14 Amps.
- Room ambient temperature should not exceed 104°F (40°C).
- The lamp ignition voltage is 4.5Kv, non-hot restrike.
- The ballast case temperature should not exceed 167°F (75°C).



WARNING: DO NOT power the Source Four HID PARnel with a dimmable power supply. Dimming will damage the ballast and void the warranty.

Color frame retaining clip usage

The color frame holder is equipped with a spring-loaded retaining clip that prevents color frames and accessories from falling out. Make sure the Source Four HID PAR-Nel has the color frame retaining clip in the locked position when hanging. (**Figure 2**)



Note: Make sure to use colorframes or accessories with a 6.7 inch inside diameter.

1. Release the retaining clip by pushing it sideways. The retaining clip opens.
2. Insert the color frame.
3. Press the retaining clip down until it locks.

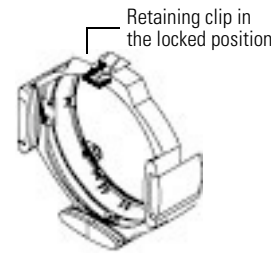
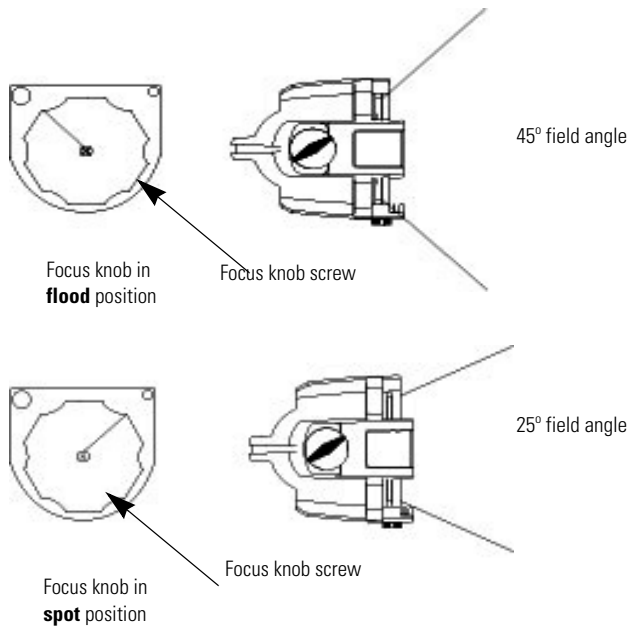


Figure 2

Focus Knob Positioning



To adjust the Focus knob tension, loosen or tighten the Focus knob screw.

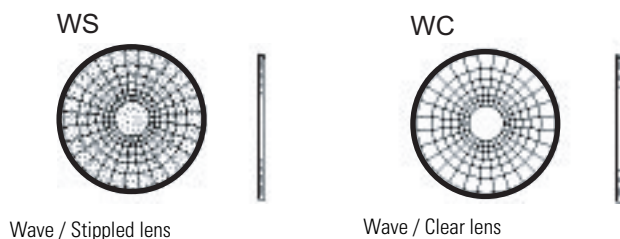


CAUTION: The focus knob does not rotate 360°. Do not attempt to exceed rotational limit. Overtightening may result in damage or breakage of the knob.

Lens identification

The Source Four PARNel comes equipped with two types of lenses; Wave/Stippled (WS) and Wave/Clear (WC). The type can be identified by the lens texture.

The WC rear lens is in a “fixed” position inside the fixture. The WS lens is in the rotating ring at the front of the fixture. The wave surfaces face each other.



Changing Source Four PARnel lenses

Change lenses if they become cracked or badly scratched.



CAUTION: *Never operate the Source Four PARnel without a lens in place.*

Removing a wave/stippled front lens

1. Source Four PARnel lenses get hot while the unit is in operation. Let the fixture cool before handling the lens.
2. Disconnect power from the fixture.
3. Place the fixture on a flat, stable work surface. **Do not** install or remove lenses with the unit hanging.
4. Rotate the focus knob to full spot position.
5. Tilt the front of the fixture down at least 45 degrees.
6. Press the spring clip with your finger to release the lens (**Figure 3**).
7. Allow the lens to drop forward from under the clip.
8. When the lens drops, remove your finger, allowing the lens to slide forward until it rests on the lens catchers (**Figure 4**).
9. Carefully remove the lens from the fixture.

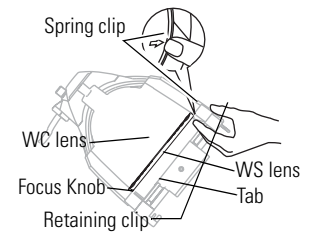


Figure 3

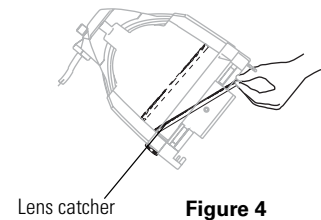


Figure 4

Installing a wave/stippled lens (front)

1. Position the fixture with the front of the unit (the lens side) facing you, and tilted slightly (**Figure 3**).
2. Rotate the focus knob to full spot position.
3. Hold the lens by the edge, and position it so the wave side faces the back of the fixture (**Figure 5**).
4. From the top of the fixture, slide the lens behind the lens catchers and position its base behind the tabs on the bottom of the lens rotation ring. See *Positioning the wave/stippled lens* below.
5. Gently push the top of the lens inward until it snaps behind the spring clip.

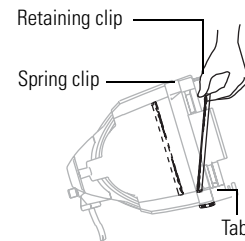


Figure 5

Positioning the wave/stippled lens (front)

- There are seven "notches" cut into the stippled side of the lens. Position the lens so that the cluster of three notches is on top. The center notch of the cluster coincides with the spring clip on the lens retaining ring. (**Figure 6**)
- The bottom of the lens has a cluster of four notches. Place the two center notches behind the tabs at the bottom of the lens rotating ring. (**Figure 5**)

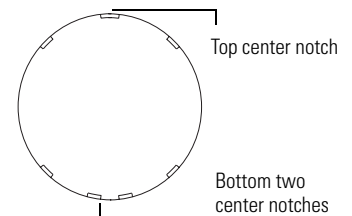


Figure 6

Cleaning the reflector

1. Unplug the fixture before attempting to clean the reflector.
2. Remove the lamp before attempting to clean the reflector.
3. Remove the lenses so you can access the reflector from the front of the fixture.
4. Remove dust with a blast of oil free air, or wipe with a clean, soft, lint-free cotton cloth. If this is sufficient to remove dust, go to step 7. Otherwise, continue to step 5.
5. Dampen a clean, soft, lint-free cotton cloth with a mild, soapy water solution and gently wipe the reflector.
6. Remove any soapy water residue with a clean, soft, lint-free cotton cloth dampened with water.
7. Reinstall the lenses before using the fixture.



CAUTION: *Do not use glass or window cleaners on the reflector. Chemicals in the cleaners will harm the reflective coating. Do not use paper towels or harsh materials to wipe the reflector. These materials can scratch the surface of the reflector.*

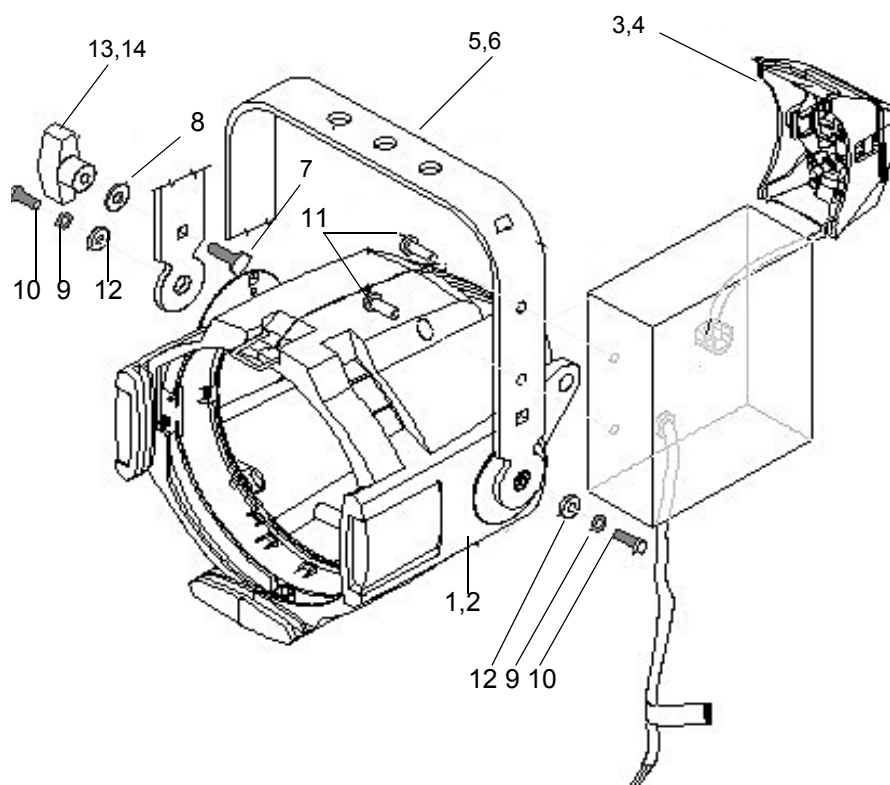
Housing assembly instructions

If you take apart the Source Four HID PARnel for any reason, please use the following steps for reassembly. Improper reassembly will result in void of warranty and loss of performance. (See parts list on page 7)

Tools required: Phillips screwdriver.

1. Install the reflector mount silicon pads (11) and lens pad (15) in the left barrel (7 or 8).
2. With the wave side of the lens facing toward the front of the fixture, install the wave/clear lens (21) into the rear lens track.
3. Assemble items 16, 17, 18, and 19 (Focus knob assembly). Rotate the focus knob full spot position. The arrow on the focus knob will point approximately to the 11 O'clock position.
4. Place the focus knob assembly into the left barrel.
5. Install the lens stop (14) and the rotator spring clip (12) into the lens rotator (12 or 13).
6. Install the lens rotator into the left barrel.
7. Install the rotator pressure clip (9) into the left barrel with screw (23).
8. Install the gel retainer clip (1) and the spring (22) into the right barrel (5 or 6).
9. Attach the right barrel to the left barrel using screws (3) in three places.
10. Check that the gel clip retainer (1) moves easily into position.
11. Check for smooth rotation of the lens rotator (12 or 13).
12. With the wave side facing inward, install the wave/stippled lens (20) into the lens rotator.

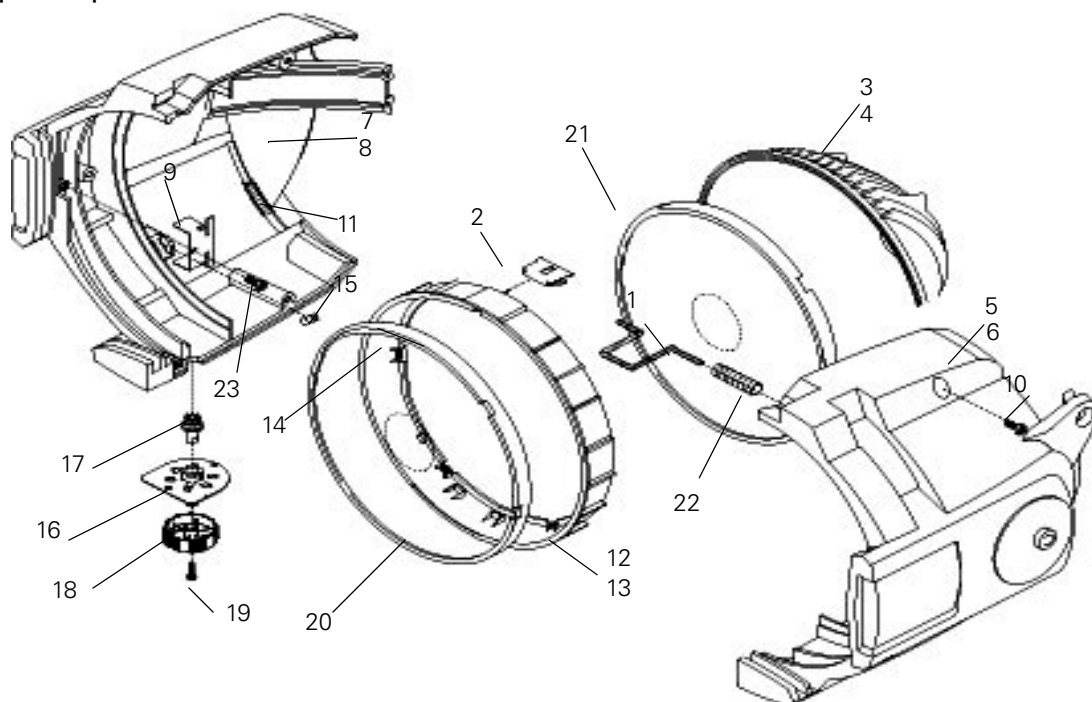
Spare parts list



Source Four HID PARnel Final Assembly

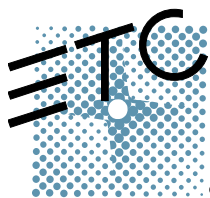
Reference Number	Part Number	Description	Quantity Required
1	7061A2022	S4 HID PAR base assembly (black)	1
2	7061A2022-1	S4 HID PAR base assembly (white)	1
3	7061A2024-0X	120V HID PAR Lamp socket assembly (black)	1
4	7061A2024-1X	120V HID PAR Lamp socket assembly (white)	1
5	7061A3039	HID PAR yoke bracket (black)	1
6	7061A3039-1	HID PAR yoke bracket (white)	1
7	HW5125	Bolt, carriage	1
8	HW5126	Washer, flat	1
9	HW5139	Washer, split ring lock	2
10	HW5172	Bolt, hex	2
11	HW5270	Bolt, spinlock	2
12	HW522	Washer, flat	2
13	HW8144	Handle, yoke knob (black)	1
14	HW8144-1	Handle, yoke knob (white)	1

Spare parts list



Source Four HID PARnel Housing Assembly

Reference Number	Part Number	Description	Quantity Required
1	7061A3005	Gel retainer clip	1
2	7061A3013	Spring clip rotator	1
3	7061A3014	Reflector, painted black	1
4	7061A3014-1	Reflector, painted white	1
5	7061A3025	Barrel, painted black	1
6	7061A3025-1	Barrel, painted white	1
7	70612019	Source Four PAR rivet assembly, black	1
8	70612019	Source Four PAR rivet assembly, white	1
9	70613029	Rotator pressure clip	1
10	HW492	Screw, 10-32 X 5/8, PhPH Taptite	3
11	7061A4001	Pad, silicon reflector mount	2
12	70614012	Lens rotator, black	1
13	70614012-1	Lens rotator, white	1
14	7061A4029	Lens stop	1
15	7061A4020	PARnel lens pad	4
16	7061A4013	Focus knob bushing	1
17	7061A4014	Focus knob gear	1
18	7061A4015	Focus knob	1
19	HW2154	Screw, PPH, 6-19 X 1/2L, 48-2 Plastite	1
20	7061A4010-2	PAR zoom wave/stippled lens	1
21	7061A4010-1	PAR zoom wave/clear lens	1
22	HW750	Spring, retainer	1
23	HW4145	Screw, 10-32 X 3/8, PhPH Taptite, BO	1



Americas ■ 3030 Laura Lane, P.O. Box 620979, Middleton, Wisconsin 53562-0979 USA ■ Tel: +608 831 4116 ■ +800 688 4116 ■ Fax: +608 836 1736
■ +800 555 8912

Europe ■ Unit 4, Victoria Industrial Estate, Victoria Road, London W3 6UU, UK ■ Tel: +44 (0)20 8896 1000 ■ Fax: +44 (0)20 8896 2000

Asia ■ Room 605-606, Tower III Enterprise Square, 9 Sheung Yuet Road, Kowloon Bay, Kowloon, Hong Kong ■ Tel: +852 2799 1220 ■ Fax: +852 2799 9325

Web: www.etcconnect.com ■ Email: (US) mail@etcconnect.com ■ (UK) mail@etceurope.com ■ (Asia) mail@etcasia.com

Service: service@etcconnect.com ■ Toll free: 800 775 4382 ■ Comments about this document: techcomm@etcconnect.com

Copyright © 2003 Electronic Theatre Controls, Inc. All Rights Reserved. Product information and specifications subject to change.

7061M1013 ■ Rev A ■ Released 4/03