



**FREEDOM™  
ARCHITECTURAL  
LED DOWNLIGHTS  
& RETROFITS**



Freedom architectural recessed LEDs allow for multiple beam angles and color temperatures in one room using matching trims.

# One LED retrofit. Hundreds of options.

**Freedom of design,  
LED efficiency.  
Great value.**

Lighting projects have a way of coming with many variables. Ceiling heights, room size and purpose, and code requirements all make for a challenging lighting plan. Satco Freedom recessed LED fixtures help make the process easier by providing many options—hundreds to be exact—from just one basic retrofit.

Multiple beam angles, fixture sizes, Lumens, color temperatures and trims give you the Freedom to create the look you want and the performance you need. You can create multiple solutions for new installs or renovations using one family of components, custom designed by you, to meet most any project requirement.



## LED: Freedom from high energy costs

Freedom LED fixtures deliver energy savings so important to any project, whether it's new construction or old work. Freedom LED retrofits save up to 85% over older technologies, burn cool, and enjoy a long life of up to 50,000 hours. That all translates to lower utility bills and far less maintenance. And all Freedom LED fixtures are dimmable and deliver up to 90 CRI.



## Freedom is a great value for everyone

Freedom LED retrofits make it easy to create custom solutions at a very reasonable cost and installation is as simple as installing a light bulb. Dozens of fixture choices, ease of installation and lower energy and maintenance costs make Freedom a great value for both installers and end users alike.



Freedom architectural recessed LEDs allow for multiple beam angles and color temperatures in one room using matching trims.

## Freedom sets the mood

In addition to the 4 available color temperatures, Freedom fixtures can also be designed with warm-dimming LEDs. Once the sole realm of the incandescent lamp, it can be easily recreated with the Freedom warm dimming LED housing. Unlike other LED lighting which dims to a gray light, our Dimension warm dimming modules dim from 2700K to a very warm 2200K just like older incandescent lamps. Homes and venues of all sorts can achieve this inviting atmosphere and not have to give up the energy savings LEDs offer.

- 4 Color temperatures and warm dimming option
- 4 Beam angles
- 4" and 5/6" retrofit sizes
- 4" and 5" universal cans
- Dimmable\*
- Up to CRI >90\*\*
- 5 year warranty†
- Long life—50,000 hours

\* Consult Satco or visit [www.satco.com](http://www.satco.com) for an up to date dimmer compatibility list.

\*\* 5000K >80CRI

† See separate warranty for complete terms and conditions.



## Creating custom LED retrofits is as easy as 1, 2, 3.

It takes just 3 steps to solve dozens of lighting challenges. Start by choosing the housing size. This also contains your color temperature, including warm-dimming. Then choose the beam angle you need for the item or area you're lighting. Finally, choose the trim ring. That's it. You're on the way to creating a consistent, functional lighting plan that covers almost every lighting need.

### 3 Easy steps to customize your Freedom downlight/retrofit.



Select color temperature

#### Start with the housing size and color temperature

- 4" | • 2700K
- 5 1/2" | • 3000K
- 4000K
- 5000K
- 2700K-2200K Warm Dimming



Select beam angle

#### Add the beam angle and optics

- |   |   |
|---|---|
| <b>4"</b><br>• 30°<br>• 40°<br>• 60°<br>• 95° | <b>5/6"</b><br>• 35°<br>• 45°<br>• 60°<br>• 95° |
|---|---|



Select trim

#### Choose your trim finish and shape, round or square

- White
- Brushed Nickel
- Polished Nickel
- Bronze

E26 Medium base adapter supplied.  
Optional GU10 & GU24 bases available



Quick connector



Trim ring – choose round or square

Beam angle optics

Twist blade mounting for easy installation

Housing with color temperature choices or warm dimming option



Achieve different lighting effects at retail while maintaining a cohesive, custom look.



## LED-ready recessed housings mean even more Freedom

Just four recessed can assemblies cover most any installation. These shallow air-tight 4" and 5" universal LED can assemblies are designed for spaces where depth is limited.

- Two designs – perfect for new construction or remodeling work
- Available in 4" and 5" sizes
- LED-ready connector
- Shallow housing – perfect for hard to fit locations
- Push-in wire connectors supplied
- Two bar hangers are included and adjustable to 25". Bar hangers are parallel to junction box, but can be positioned 90° perpendicular to junction box if desired.
- Rugged design and finish
- IC Rated
- Air-tight rated

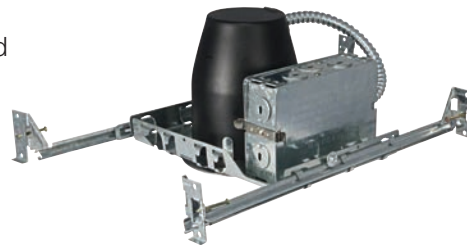


Freedom recessed housings supplied with LED quick connector.

For 4" remodeling projects, choose model **S9539**



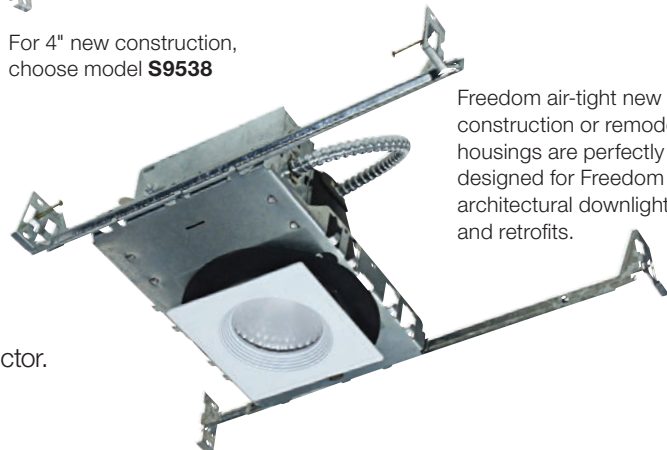
For 5" new construction, choose model **S9541**



For 4" new construction, choose model **S9538**



For 5" new construction, choose model **S9540**



Freedom air-tight new construction or remodeling housings are perfectly designed for Freedom LED architectural downlights and retrofits.

## Retrofit installation is easy!



1 Disconnect the screw-in base from the Freedom housing at the quick connector and screw the base end into the recessed can's socket.



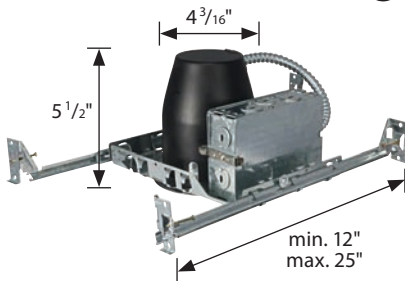
2 Plug the base back into the quick connector on the Freedom housing.



3 Rotate to the right and push up into ceiling can.

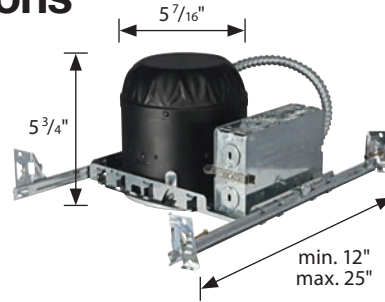


## Recessed Housing Specifications



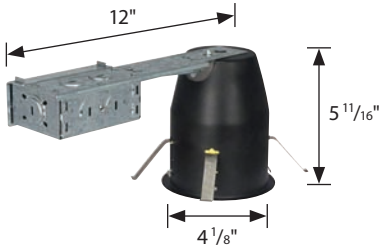
### S9538 4" Housing – New Construction

- For 120V, 60Hz, 18W max.
- Suitable for wet and damp locations\*
- For use only with UL or cUL classified LED or equivalent



### S9540 5/6" Housing – New Construction

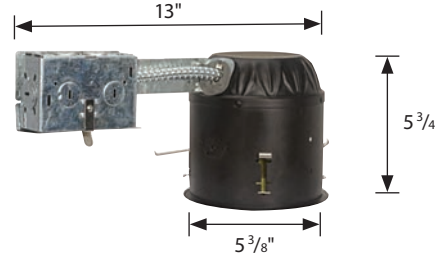
- For 120V, 60Hz, 24W max.
- Suitable for wet and damp locations\*
- For use only with UL or cUL classified LED or equivalent



### S9539 4" Housing – Remodel

- For 120V, 60Hz, 18W max.
- Suitable for wet and damp locations\*
- For use only with UL or cUL classified LED or equivalent

\*LED retrofit trim must be equally rated.



### S9541 5/6" Housing – Remodel

- For 120V, 60Hz, 24W max.
- Suitable for wet and damp locations\*
- For use only with UL or cUL classified LED or equivalent

## Freedom Trim Specifications

### Round – for 4", 5/6" Housings



**White**  
S9516 4"  
S9520 5/6"



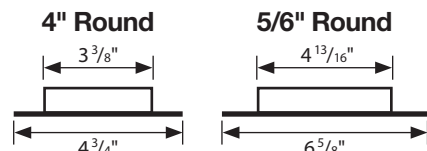
**Brushed Nickel**  
S9517 4"  
S9521 5/6"



**Bronze**  
S9518 4"  
S9522 5/6"



**Polished Nickel**  
S9519 4"  
S9523 5/6"



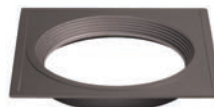
### Square – for 4", 5/6" Housings



**White**  
S9526 4"  
S9530 5"  
S9534 6"



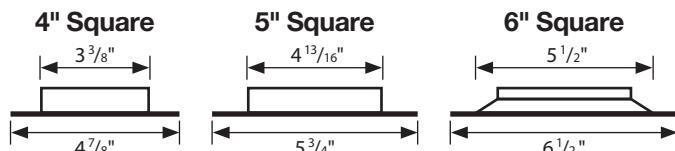
**Brushed Nickel**  
S9527 4"  
S9531 5"  
S9535 6"



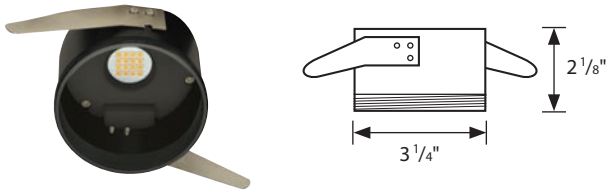
**Bronze**  
S9528 4"  
S9532 5"  
S9536 6"



**Polished Nickel**  
S9529 4"  
S9533 5"  
S9537 6"



# 4" Freedom Specifications



## S9500 4" LED Housing – 10W, 2700K, 90CRI

Reflector Numbers	Reflector Angle	ENERGY STAR Numbers	Brightness (lumens)
S9508	30 deg	S9500-30	540
S9509	40 deg	S9500-40	540
S9510	60 deg	S9500-60	540
S9511	95 deg	S9500-95	500

Used with Trim Numbers: S9516, S9517, S9518, S9519

## S9501 4" LED Housing – 10W, 3000K, 90CRI

Reflector Numbers	Reflector Angle	ENERGY STAR Numbers	Brightness (lumens)
S9508	30 deg	S9501-30	550
S9509	40 deg	S9501-40	550
S9510	60 deg	S9501-60	550
S9511	95 deg	S9501-95	500

Used with Trim Numbers: S9516, S9517, S9518, S9519

## S9502 4" LED Housing – 10W, 4000K, 90CRI

Reflector Numbers	Reflector Angle	ENERGY STAR Numbers	Brightness (lumens)
S9508	30 deg	S9502-30	600
S9509	40 deg	S9502-40	600
S9510	60 deg	S9502-60	600
S9511	95 deg	S9502-95	550

Used with Trim Numbers: S9516, S9517, S9518, S9519

## S9503 4" LED Housing – 10W, 5000K, 80CRI

Reflector Numbers	Reflector Angle	ENERGY STAR Numbers	Brightness (lumens)
S9508	30 deg	S9503-30	700
S9509	40 deg	S9503-40	700
S9510	60 deg	S9503-60	700
S9511	95 deg	S9503-95	650

Used with Trim Numbers: S9516, S9517, S9518, S9519

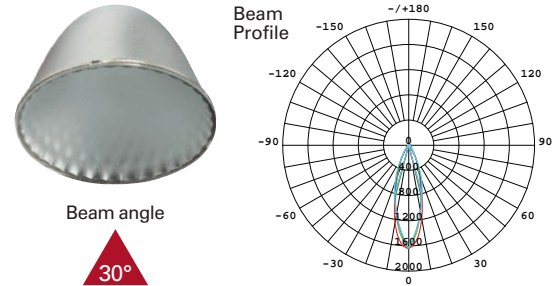
## S9524 4" LED Housing – 10W, 2700K-2200K, 83CRI

Reflector Numbers	Reflector Angle	ENERGY STAR Numbers†	Brightness @ 2700K (lumens)†
S9508	30 deg	S9524-30	540
S9509	40 deg	S9524-40	540
S9510	60 deg	S9524-60	540
S9511	95 deg	S9524-95	500

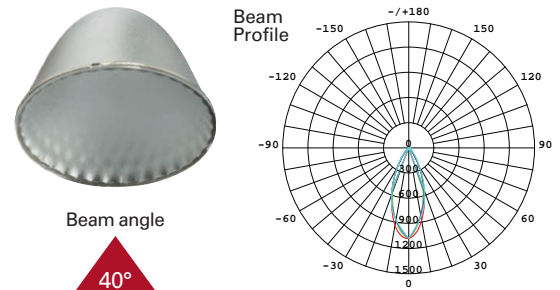
Used with Trim Numbers: S9516, S9517, S9518, S9519

†ENERGY STAR rating relates to 2700K CCT setting only

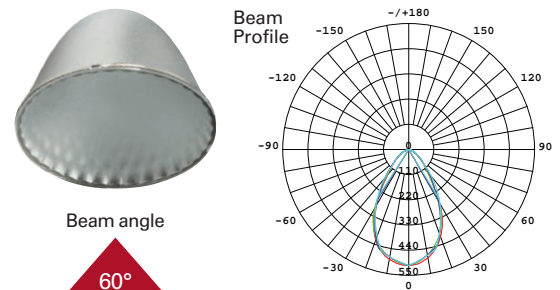
## S9508 4" Reflector – 30° Beam angle



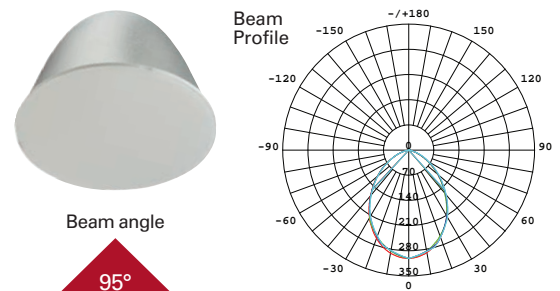
## S9509 4" Reflector – 40° Beam angle



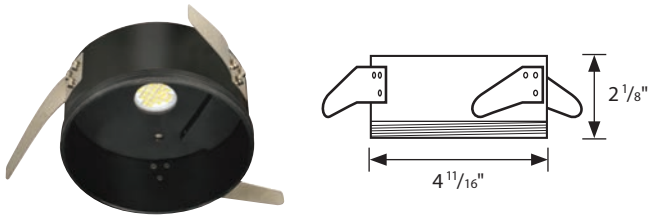
## S9510 4" Reflector – 60° Beam angle



## S9511 4" Reflector – 95° Beam angle



## 5"/6" Freedom Specifications



### S9504 5"/6" LED Housing – 13.5W, 2700K, 90CRI

Reflector Numbers	Reflector Angle	ENERGY STAR Numbers	Brightness (lumens)
S9512	35 deg	S9504-35	830
S9513	45 deg	S9504-45	830
S9514	60 deg	S9504-60	830
S9515	95 deg	S9504-95	760

Used with Trim Numbers: S9520, S9521, S9522, S9523

### S9505 5"/6" LED Housing – 13.5W, 3000K, 90CRI

Reflector Numbers	Reflector Angle	ENERGY STAR Numbers	Brightness (lumens)
S9512	35 deg	S9505-35	860
S9513	45 deg	S9505-45	860
S9514	60 deg	S9505-60	860
S9515	95 deg	S9505-95	800

Used with Trim Numbers: S9520, S9521, S9522, S9523

### S9506 5"/6" LED Housing – 13.5W, 4000K, 90CRI

Reflector Numbers	Reflector Angle	ENERGY STAR Numbers	Brightness (lumens)
S9512	35 deg	S9506-35	900
S9513	45 deg	S9506-45	900
S9514	60 deg	S9506-60	900
S9515	95 deg	S9506-95	860

Used with Trim Numbers: S9520, S9521, S9522, S9523

### S9507 5"/6" LED Housing – 13.5W, 5000K, 80CRI

Reflector Numbers	Reflector Angle	ENERGY STAR Numbers	Brightness (lumens)
S9512	35 deg	S9507-35	1000
S9513	45 deg	S9507-45	1000
S9514	60 deg	S9507-60	1000
S9515	95 deg	S9507-95	960

Used with Trim Numbers: S9520, S9521, S9522, S9523

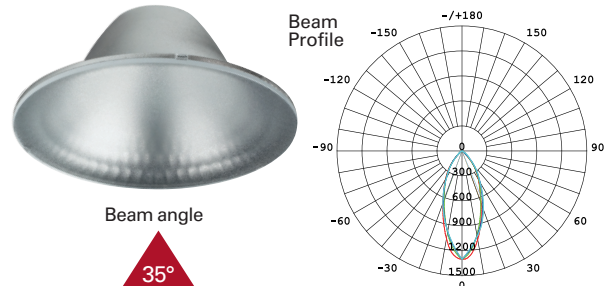
### S9525 5"/6" LED Housing – 13.5W, 2200K-2700K, 83CRI

Reflector Numbers	Reflector Angle	ENERGY STAR Numbers†	Brightness @ 2700K (lumens)†
S9512	35 deg	S9525-35	830
S9513	45 deg	S9525-45	830
S9514	60 deg	S9525-60	830
S9515	95 deg	S9525-95	760

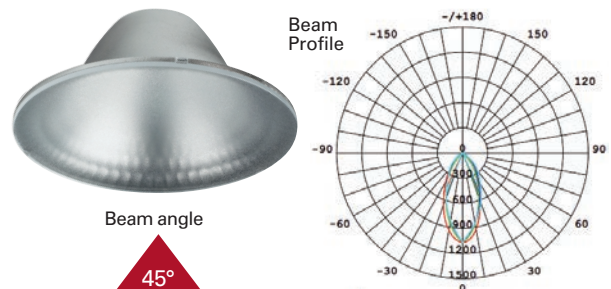
Used with Trim Numbers: S9520, S9521, S9522, S9523

†ENERGY STAR rating relates to 2700K CCT setting only

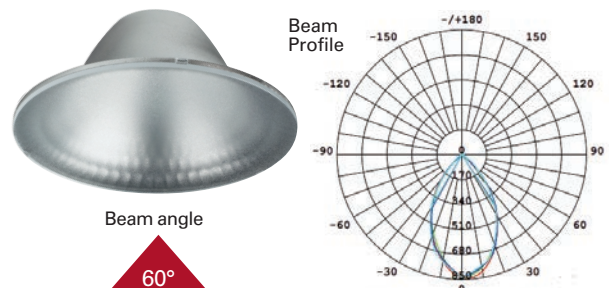
### S9512 5"/6" Reflector – 35° Beam angle



### S9513 5"/6" Reflector – 45° Beam angle



### S9514 5"/6" Reflector – 60° Beam angle



### S9515 5"/6" Reflector – 95° Beam angle

