



Light is OSRAM

HPL ULTRA PLUS (UCF) Lamp Family

High Performance Tungsten Halogen Lamps



OSRAM HPL ULTRA PLUS (UCF) – An improved product line of the HPL family of lamps originally designed specifically for the Source Four® series of fixtures. The HPL ULTRA PLUS uses an ULTRA Compact Filament (UCF) design for maximum efficiency and life. The unique top bridgeless construction for lamps with ≤ 120 volts virtually eliminates filament shadowing, allowing for crisper images than ever before.

OSRAM HPL lamps have a compact coil design with increased lumen output. Stronger seal design and a base with pins made of solid nickel improve durability and prevent any breakage during installation. HPL ULTRA PLUS (UCF) brings increased opportunities for all stage, studio, TV and architectural applications with superior light performance and maximum efficacy.

Application Information

Applications

- Theater, TV, studio
- Entertainment and architectural lighting applications
- Professional photography
- Life (X)—extended life version lamps (1000 to 2000 hrs. average rated life) are ideal for architectural applications where lamps are operated for extended periods which reduces change-outs during continuous performances

Typical Fixtures

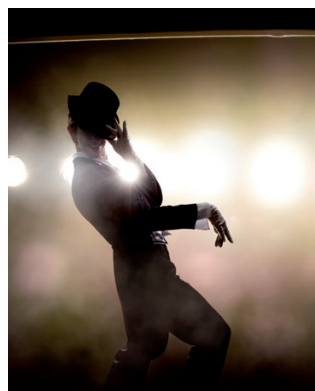
- Source Four series of Ellipsoidal, PAR, Fresnel and PARNel fixtures
- Any theatrical fixture incorporating a TP22H socket

Key Features & Benefits

- ULTRA Compact Filament (UCF) design for high lumen output
- Four/six compact tungsten coil segments (square and hexagonal)
- Optimum system performance
- Reinforced pinch seal for extra mechanical resistance
- Unique top bridgeless construction for lamps with ≤ 120 volts improves light uniformity for maximum light collection
- Wrapped in foam so you do not have to touch the lamp when installing
- OSRAM TP22H socket is available. Fits all generations of ETC Source Four fixtures
- Special heat sink base
- Works well in high temperature applications
- Suited for high humidity applications
- Reduces seal temperature maximizing life and ensuring proper lamp alignment
- Smooth finish
- Low heat load to the socket
- 550W and 750W HPL lamps have a third pin in the base which prevents them from being accidentally inserted in fixtures they are not rated for

Product Offering

Type	Watts	Volts	Avg Rated Life (hrs)
HPL Single-End Lamps	375, 550, 575, 750	77, 115, 120, 230, 240	300 to 2000



Ordering Information

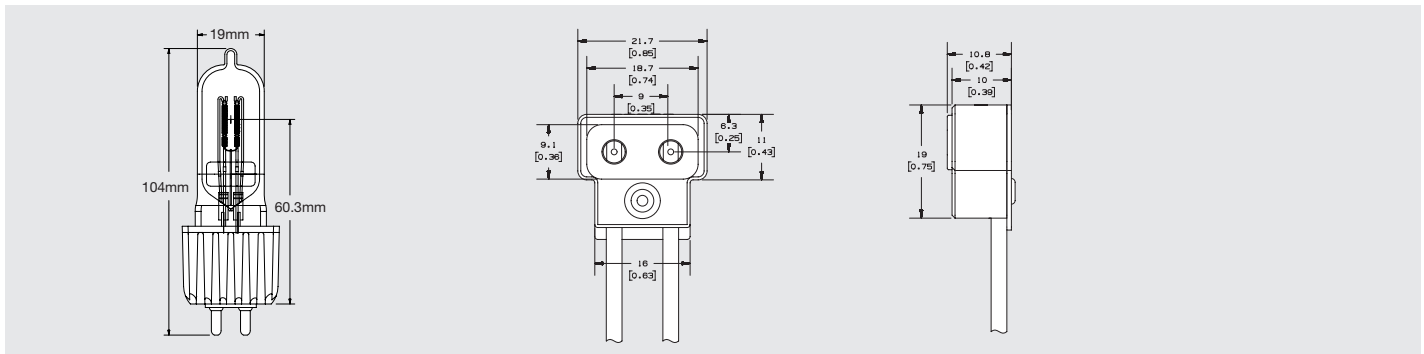
Product Number	Ordering Abbreviation	Rated Wattage (W)	Rated Voltage (V)	Luminous Flux (lm)	Color Temperature (K)	Average Rated Life (hrs)	Coil	Bulb
54625	HPL 375/115	375	115	10,540	3250	300	4-C8	T-6
54649	HPL 375/115/X	375	115	8,000	3050	1000	4-C8	T-6
54623	HPL 550/77	550	77	16,170	3250	300	4-C8	T-6
54604	HPL 550/77/X	550	77	12,160	3050	2000	4-C8	T-6
54622	HPL 575/115	575	115	16,520	3250	300	4-C8	T-6
54807	HPL 575/115/X	575	115	12,360	3050	2000	4-C8	T-6
54817	HPL 575/120	575	120	16,520	3250	300	4-C8	T-6
54815	HPL 575/120/X	575	120	12,360	3050	2000	4-C8	T-6
54618	HPL 575/230	575	230	14,900	3200	400	6-C8	T-6
54665	HPL 575/230/X	575	230	11,780	3050	1500	6-C8	T-6
54619	HPL 575/240	575	240	14,900	3200	400	6-C8	T-6
54703	HPL 575/240/X	575	240	11,780	3050	1500	6-C8	T-6
54825	HPL 750/77	750	77	22,950	3250	300	4-C8	T-6
54602	HPL 750/115	750	115	21,900	3250	300	4-C8	T-6
54611	HPL 750/115/X	750	115	16,400	3050	1500	4-C8	T-6
54605	HPL 750/120	750	120	21,900	3250	300	4-C8	T-6
54653	HPL 750/120/X	750	120	16,400	3050	2000	4-C8	T-6
54603	HPL 750/230	750	230	19,750	3200	300	6-C8	T-6
54670	HPL 750/230/X	750	230	15,600	3050	1500	6-C8	T-6
54614	HPL 750/240	750	240	19,750	3200	300	6-C8	T-6
54704	HPL 750/240/X	750	240	15,600	3050	1500	6-C8	T-6

Base: Medium 2 pin with heat sink (all lamps) Operating position: Any (all lamps) Case quantity: 12/case (all lamps)

Ordering Guide

HPL	375	/	115	/	X
High Performance Lamp	Wattage: 375, 550, 575 or 750 watts		Rated Voltage: 77, 115, 120, 230, 240		Long Life Version

Dimensions



Specification

Lamps shall have a color temperature of 3050K to 3250K, operated with various volts of 77V to 240V and have life of 300 to 2,000 hrs long life versions with complete warranty from the lamp manufacturer.

OSRAM SYLVANIA Inc.

OSRAM Americas:

200 Ballardvale Street
Wilmington, MA 01887 USA
877-636-5267
www.osram.us

OSRAM SYLVANIA Inc.

Entertainment Lighting:

129 Portsmouth Avenue
Exeter, NH 03833 USA
888-677-2627
www.osram.us

OSRAM is a registered trademark of OSRAM GmbH.
All other trademarks are those of their respective owners.
Specifications subject to change without notice.

© 2018 OSRAM SYLVANIA Inc.

OSRAM