

MASTERCcolour CDM-TD

MASTERCcolour CDM-TD 70W/830 RX7s 1CT/12

Range of double-ended, compact, high-efficiency, discharge lamps with a stable color over lifetime and a crisp, sparkling light

Product data

• General Information

Cap-Base	RX7S [RX7s]
Operating Position	P45 [Parallel +/-45D or Horizontal(HOR)]
Life To 5% Failures (Nom)	9000 h
Life To 10% Failures (Nom)	13000 h
Life To 20% Failures (Nom)	15000 h
Life To 50% Failures (Nom)	16000 h
Ansi Code HID	C139/E

• Light Technical

Color Code	830 [CCT of 3000K]
Luminous Flux (Nom)	6000 lm
Color Designation	Warm White (WW)
Lumen Maintenance 10000 h (Nom)	70 %
Lumen Maintenance 2000 h (Min)	80 %
Lumen Maintenance 2000 h (Nom)	87 %
Lumen Maintenance 5000 h (Min)	70 %
Lumen Maintenance 5000 h (Nom)	80 %
Chromaticity Coordinate X (Nom)	0.443
Chromaticity Coordinate Y (Nom)	0.401
Correlated Color Temperature (Nom)	2900 K

Luminous Efficacy (rated) (Nom)	85 lm/W
Color Rendering Index (Min)	77
Color Rendering Index (Nom)	80

• Operating and Electrical

Power (Rated) (Nom)	70 W
Lamp Current Run-Up (Max)	1.4 A
Lamp Current (EM) (Nom)	0.95 A
Ignition Supply Voltage (Max)	198 V
Ignition Peak Voltage (Max)	5000 V
Ignition Supply Voltage (Min)	198 V
Re-Ignition Time (Min) (Max)	15 min
Ignition Time (Max)	30 s
Voltage (Max)	102 V
Voltage (Min)	86 V
Voltage (Nom)	94 V

• Controls and Dimming

Dimmable	No
Run-Up Time 90% (Max)	3 min

• Mechanical and Housing

Bulb Finish	Clear
-------------	-------

PHILIPS

MASTERColour CDM-TD

• Approval and Application

Energy Efficiency Label (EEL)	A+
Mercury (Hg) Content (Nom)	3.4 mg

• UV

Pet (Niosh) (Min)	8 h/500lx
Damage Factor D/fc (Max)	0.3

• Luminaire Design Requirements

Bulb Temperature (Max)	500 °C
------------------------	--------

Pinch Temperature (Max) 280 °C

• Product Data

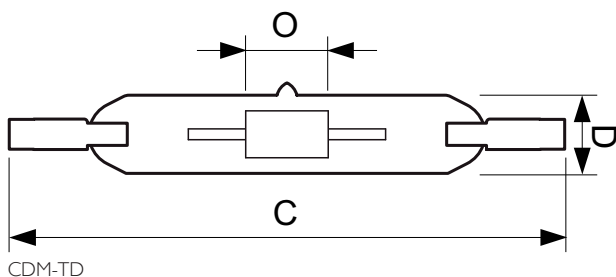
Full product code	871150019782515
Order product name	MASTERColour CDM-TD 70W/830 RX7s 1CT/12
EAN/UPC - Product	8711500197825
Order code	928082205125
Numerator - Quantity Per Pack	1
Numerator - Packs per outer box	12
Material Nr. (12NC)	928082205125
Net Weight (Piece)	21.000 g
ILCOS Code	MD/UB-70/830-H-RX7s-22/117.6

Warnings and Safety

- Use only in totally enclosed luminaire, even during testing (IEC61167, IEC 62035, IEC60598)
- The luminaire must be able to contain hot lamp parts if the lamp ruptures
- Lamps may use electronic or electromagnetic control gear

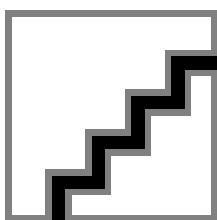
- Control gear must include end-of-life protection (IEC61167, IEC 62035)
- A lamp breaking is extremely unlikely to have any impact on your health. If a lamp breaks, ventilate the room for 30 minutes and remove the parts, preferably with gloves. Put them in a sealed plastic bag and take it to your local waste facilities for recycling. Do not use a vacuum cleaner.

Dimensional drawing

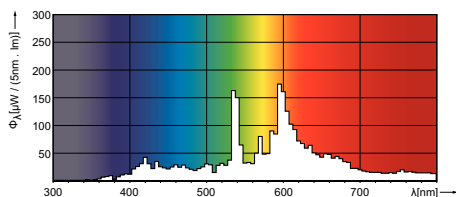


CDM-TD 70W/830 RX7s

Product	D	D	O	C
MASTERColour CDM-TD 70W/830 RX7s 1CT/12	22 mm	0.75 in	8 mm	119.63 mm



Photometric data





© 2015 Koninklijke Philips N.V. (Royal Philips)
All rights reserved.

Specifications are subject to change without notice. Trademarks are the property of
Koninklijke Philips N.V. (Royal Philips) or their respective owners.

www.philips.com/lighting

2015, December 28
data subject to change