

# 12202R-LED

2" LED Remodel Housing

## Product Description

The 12202R-LED features IDEAL connections that allows for quick, snap-in connection of NICOR® 2" D-series LED downlights. Suitable for residential and commercial applications.

### Housing

- J-Box on articulated arm
- Triac dimmable LED driver is mounted directly to housing
- Only compatible with NICOR's 2" LED downlights: Available in round smooth, round baffle, square smooth, square baffle, adjustable gimbal and adjustable square
- Washington State Energy Code approved to meet restricted airflow requirements
- 3 1/2" height allows use in 2" x 4" joist construction

### Junction Box

- Driver box is secured to housing with rivets for flexibility during installation
- Housing installs from below the ceiling and accommodates ceiling thicknesses from 1/2" to 1 1/2"
- Listed for through branch circuit wiring
- Includes two 3/8" knockouts
- Supplied with three push-in wire connectors

## Ordering Information

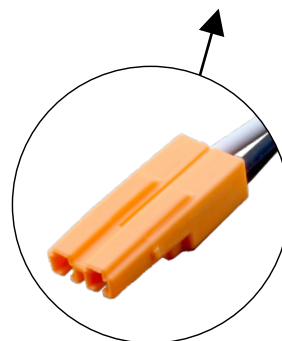
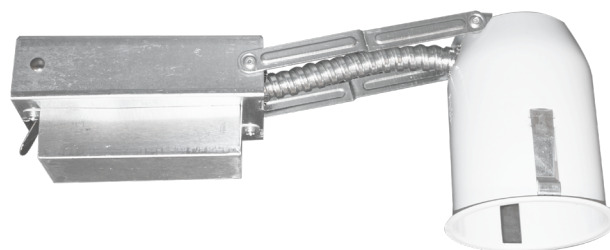
Catalog Number	Description
12202R-LED	2" LED Remodel Housing

Project \_\_\_\_\_

Catalog \_\_\_\_\_

Type \_\_\_\_\_

Date \_\_\_\_\_



IDEAL Connector

