



# YJ-BC-SRB-2835L-24V

LED Flexible Ribbon

## Applications

- High-end architectural/residential lighting
- Photographic/broadcast lighting
- Human-centric lighting



## Features

- Industrial grade high CRI performance, TLCI & TM-30 specified
- Ultra consistent and precise color with Yujileads® SimpleBinning technology (equal to <3-step MacAdam)
- 24V DC, 60 LEDs per meter, can be cut every 6 LEDs (100mm)
- Up to 500lm per meter
- 5000mm (length) × 6mm (width), 90g per reel
- Improved adhesive backing for easy installation
- Lifespan > 54000 hours (IES LM80)

## [About Yujileads®](#)

Rev Version: 2.0

F3180010.00

---

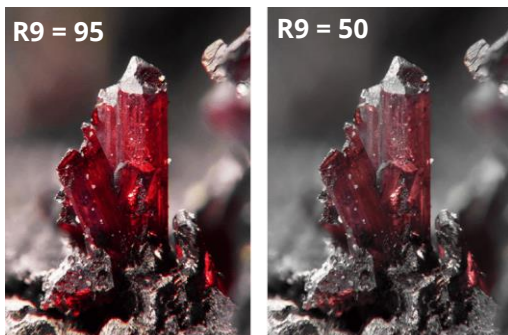
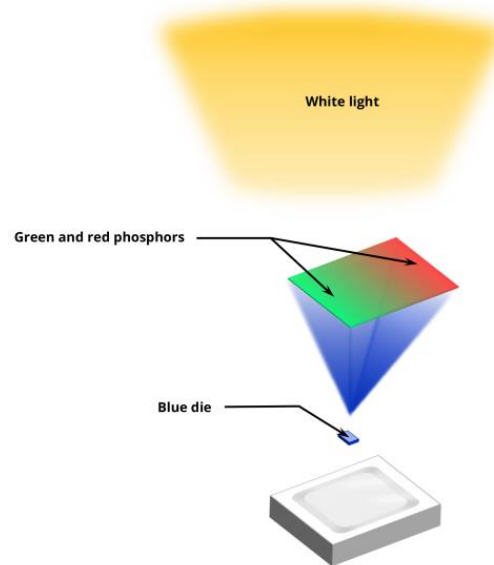
## Table of Contents

General description .....	3
Ordering information .....	7
Characteristic .....	8
Chromaticity group and diagram .....	9
Reliability .....	10
Dimensions .....	11
Characteristic graph .....	11
Additional notes .....	12
Box packaging .....	12
About Yujileds .....	14

## General description

### Industrial-leading high CRI technology

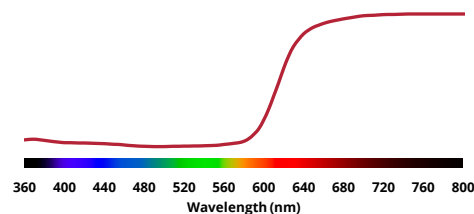
Yujileds® BC series LED is based on the efficient blue (typical 450nm) die, mixing with Yuji advanced phosphors and specifically designed spectral recipes. Although there are more and more nominal “high CRI LED” manufacturers on the market, after relevant test and analysis, it is proud to say that Yujileds® BC series LED is still one of the top performance product on the global markets. Achieving typical Ra 97 and minimum Ra 95, the stability and consistent quality in mass production are verified by statistical identification.



Light source	R9
Halogen (2865K)	99
Fluorescent (3000K)	-27
Standard LED (3000K)	13
Yujileds® BC series LED (3000K)	96

### Enhanced CRI R9 technology

The standard CRI Ra is the average score of the first eight Test Color Samples (TCS), where the 9th for saturated red color is missed. However R9 is significantly different for different light sources. In spectral analysis and CRI arithmetic, the integral area between the spectrum and the spectral reflectance response of TCS-9 decides the R9 to a large extent – in other words, how much of TCS-9 spectra reflectance is overlaid in the light source spectrum, that is a key factor.

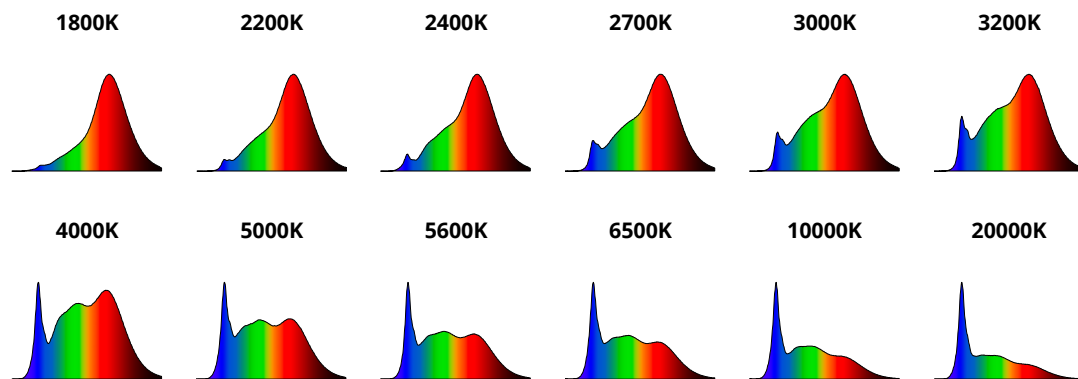


It is obvious to see from 600nm, which is just the start of red color in the visible spectrum, the TCS-9 spectral reflectance raises sharply, in consequence, if the light source does not have sufficient spectral power distribution in 600nm-800nm, it will be difficult to get a high R9. The capability of rendering the red color cannot be promised if the red spectrum is

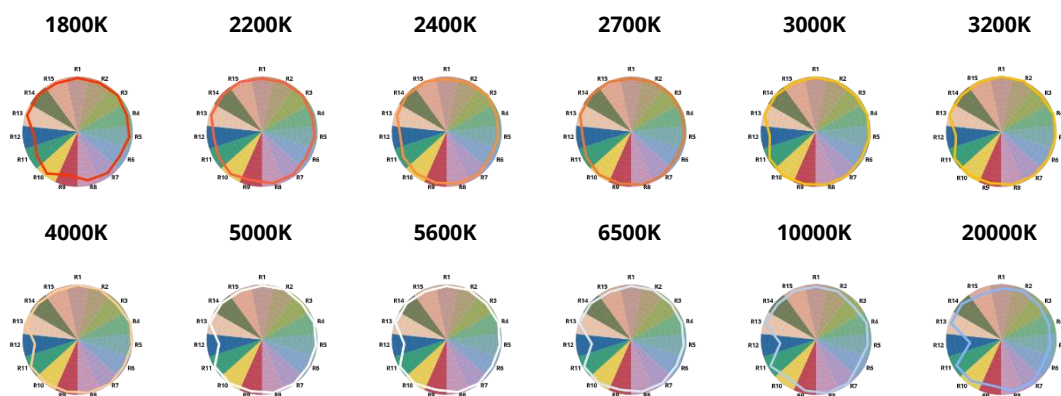
missed or not sufficient in the original light. In the comparison of fluorescent and halogen, apparently, halogen offers the richest 600+nm power, while the discrete fluorescent spectrum has limited energy there. Then in this comparison, halogen R9 = 99 but the fluorescent is R9 = -27. Comparing a standard LED to Yujileds® BC series LED at 3000K, although the emission principle is the same, the results present different R9 significantly where the standard LED is R9 = 13 and Yujileds® BC series LED is R9 = 96.

**Transcend high CRI**

High CRI becomes the tendency for LED products in recent years, and manufacturers start providing “nominal” high CRI LED to the market, however, as the result of a detailed investigation, most manufacturers’ high CRI LED are limited in the range of 2700K-5000K, where lower and higher CCTs are missed when applying to more specific applications. Yujileds® BC series LED extends high CRI performance from 1800K to 20000K CCT.

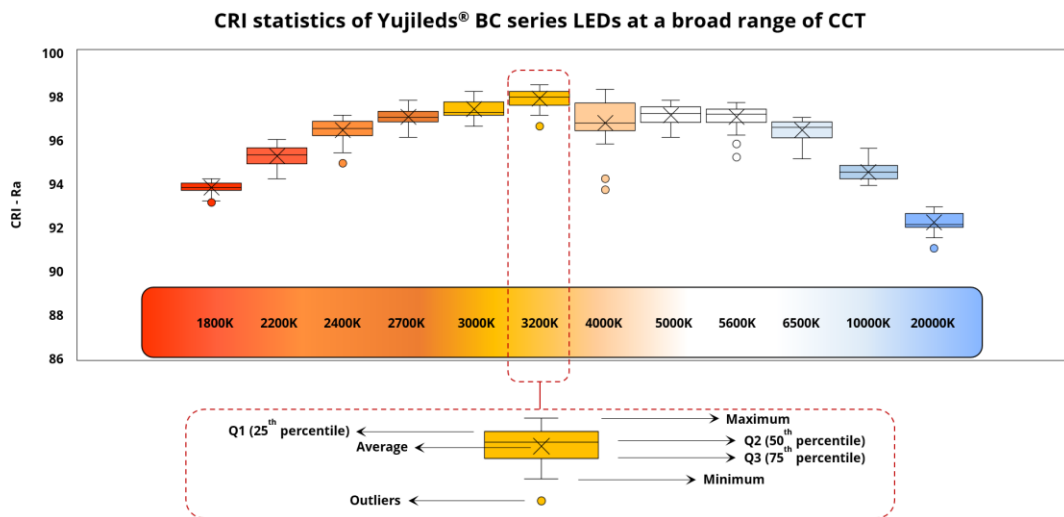


In comparison to a standard LED on the market is generally in the available CCT range of 2700K-6500K, and high CRI LEDs are more limited to fewer options, Yujileds® BC series LED can be extended to 1800K-20000K with the unique phosphor solutions, maintaining the CRI still above 92-97 and excellent spectral qualities. Moreover, looking into the specific Ri in each CCT, the color rendition is well balanced without significant difference, even for the extreme CCTs. Therefore, the CRI is always consistent regardless of what CCT we combine with the BC series LEDs.



**CRI statistic support - introducing the plot box statistics.**

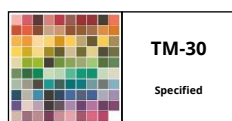
In actual applications, LED can work individually or as a group on a printed circuit board, therefore the consistent CRI is critical for both. Generally, a manufacturer only provides a typical datasheet or report to infer the overall performance but the risk is that if some LEDs in a batch have worse CRI but the typical report cannot match, especially when the application uses fewer LEDs which means CRI is difficult to be averaged with those higher ones, then the risk falls to the customers' lighting fixture.



Understanding the statistical features of LED and processing relevant analysis and control are important in this case, and these are what we do for our BC series LED. We provide the full statistic and data support from the production of 1,000,000pcs of each CCT from 1800K to 20000K, and present all characteristics and guidance for customers to make reliable simulation and prediction accordingly. And from the statistical data, we can also read that the BC series LED perform excellently on the CRI consistency.

The Yujileads® BC series LED strip is extremely versatile and can be installed in a variety of linear and curved surface alike where demands high color quality and homogeneous lighting distribution. The 12V DC strip can be cut and connected individually every 3 LEDs (25 mm), the enhanced 3oz copper traces with precise SMT resistors provide consistently high power and brightness. The improved adhesive backing is upgraded for easy installation.

The strip also supports the unique service/certification by Yujileads® as described below.



**TM-30 specification**

The most advanced colorimetric for color rendition, widely recognized as the successor of CRI.

**TLCI specification**

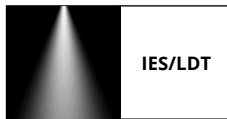
Based on the Macbeth ColorChecker, for evaluating the colorimetric quality of the broadcast lighting.

**IESNA LM-80 certification (LED)**

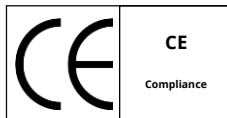
9000 hours data of chromaticity shift and TM-21 reported L70 lifetime at 55°C, 85°C and 105°C.

**SimpleBinning specification**

Simplify the chromaticity binning with TrueChroma data support to provide the most economical, simple, and practical solution to customers.

**Photometric data**

Luminous intensity distribution and illuminance data for simplifying the lighting design.

**RoHS 2011/65/EU compliance****CE compliance****REACH compliance (Phosphor)**

---

## Ordering information

PART NUMBER	PRODUCT CODE	Voltage (DC)	CCT
YJ-BC-SRB-2835L-24V-27	F3180010.27	24V	2700K
YJ-BC-SRB-2835L-24V-56	F3180010.56	24V	5600K
YJ-BC-SRB-2835L-24V-XX	F3180010.XX	24V	Custom CCT

## Characteristic

Electrical-optical characteristics ( $T_A = 25^\circ\text{C}$ , 24V DC)

PARAMETER	SYMBOL	VALUE			UNIT
		MIN.	TYP.	MAX.	
<b>Power</b>	<b>per meter</b>	-	4.8	-	W
<b>Luminous flux<sup>1</sup></b>	<b>per meter</b>	$\Phi_{2700\text{K}}$	400	-	lm
		$\Phi_{5600\text{K}}$	500	-	
<b>Color rendering index</b>	Ra	95	-	-	-
<b>TCS R9 (CRI red)</b>	R9	-	90	-	-
<b>Fidelity index<sup>2</sup></b>	Rf	-	92	-	-
<b>Gamut index<sup>2</sup></b>	Rg	-	100	-	-
<b>TLCI 2012<sup>3</sup></b>	-	-	97	-	-
<b>View angle</b>	$2\theta_{1/2}$	-	120	-	Deg

1. Tested by goniophotometer with one-meter cut.
2. Defined by the IES TM-30-18 method, this data is for trial.
3. Defined by the EBU, TLCI is the abbreviation of Television Lighting Consistency Index, this data is for trial.

Luminous intensity distribution and illuminance<sup>1</sup> ( $T_A = 25^\circ\text{C}$ , 24V DC, one-meter cut)

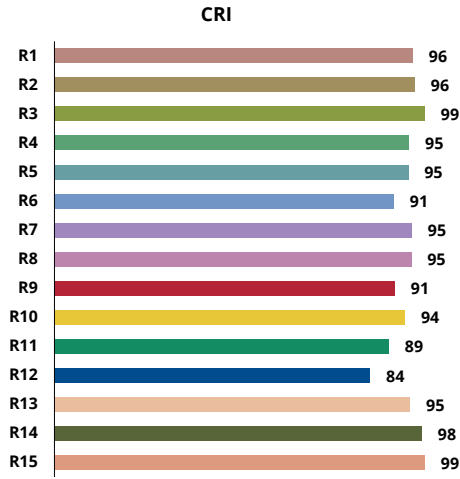
CCT	HEIGHT	DIAMETER	AVG. ILLUMINATION	MAX. ILLUMINATION
<b>2700K</b>	1m	309.50cm	35.7 lx	130.6 lx
<b>5600K</b>		329.72cm	38.6 lx	146.2 lx

1. The full luminaire photometric test report (IES/LDT file) can be downloaded from [www.yujiintl.com](http://www.yujiintl.com).

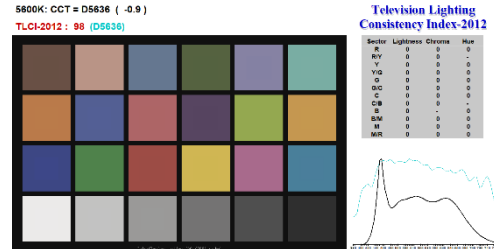


## Characteristic

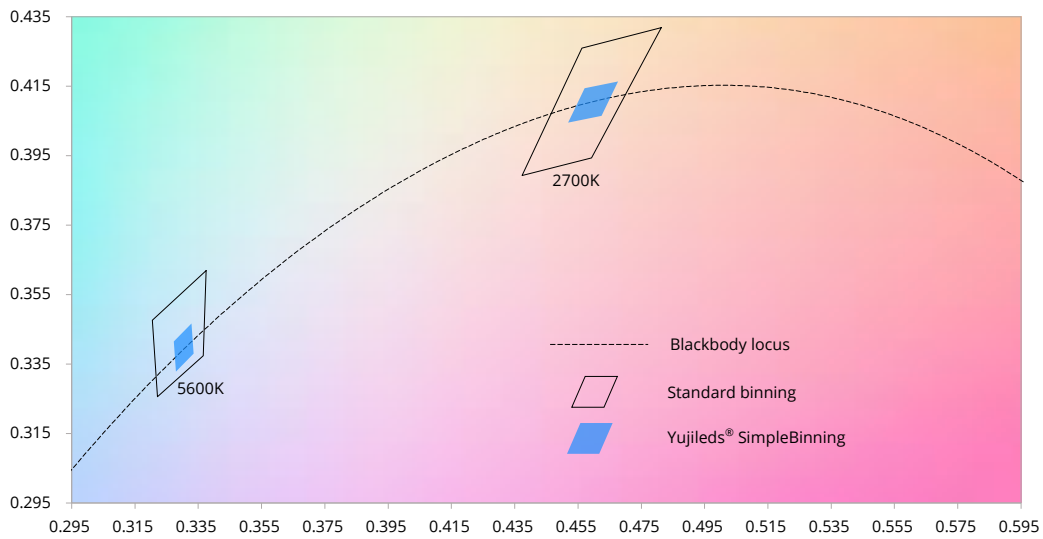
CRI graph (2700K)



TLCI (5600K)

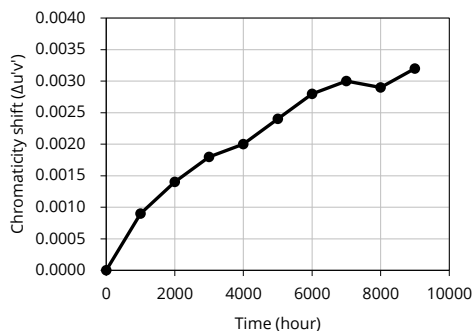
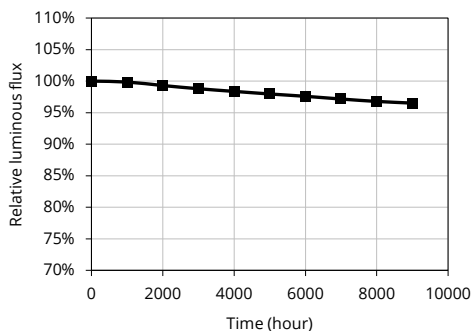


## Chromaticity group and diagram

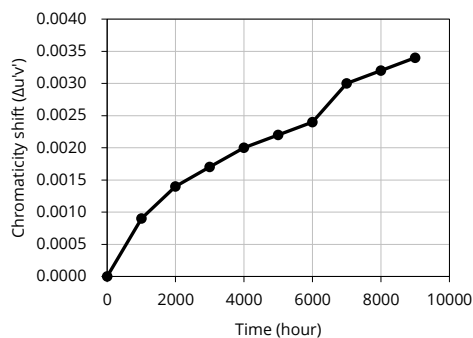
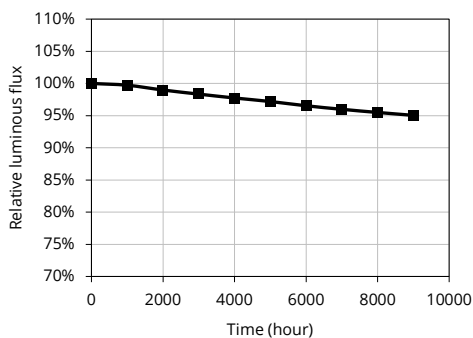


## Reliability<sup>1</sup>

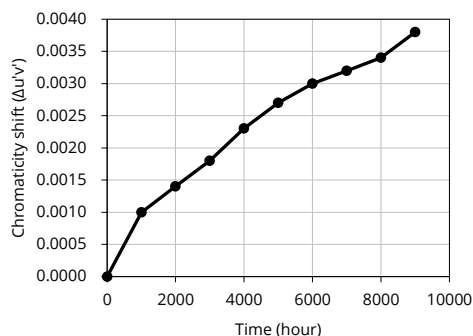
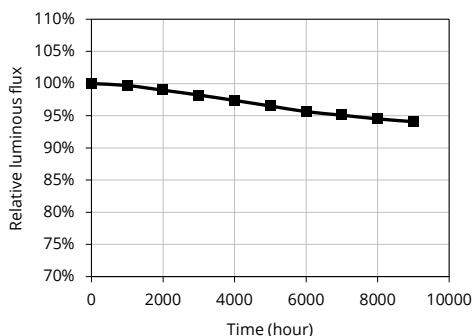
T<sub>A</sub> = 55°C, RH < 65%, reported L70 > 54000 hours<sup>2</sup>



T<sub>A</sub> = 85°C, RH < 65%, reported L70 > 54000 hours

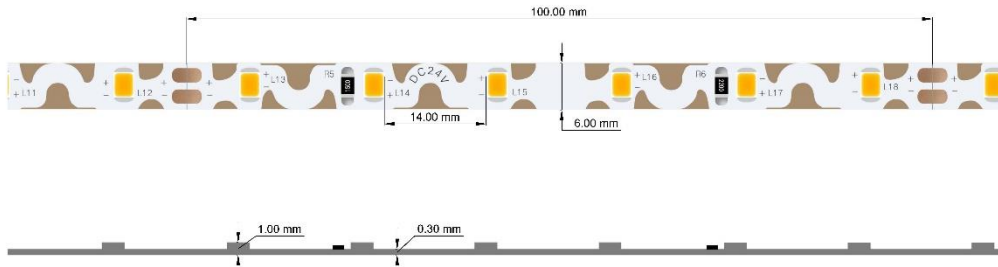


T<sub>A</sub> = 105°C, RH < 65%, reported L70 = 52000 hours



1. Data from IESNA LM-80-2008, report number R2DG150122050-10-9000. The data is based on individual LED of 100% rated current, the LED on the strip works at typical 50% rated current.
2. Yuji reserves all the right for final explanation of reliability.

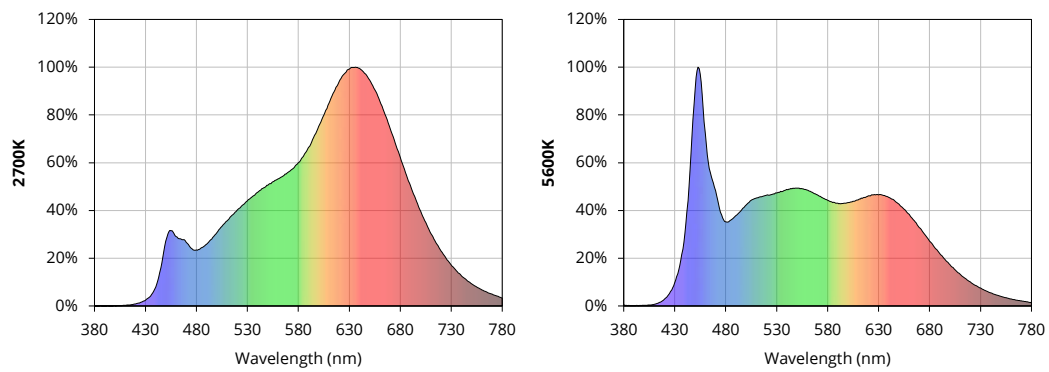
## Dimensions



## Characteristic graph

Typical spectral power distribution (normalized)

All characteristic curves are for reference only and not guaranteed.



## Additional notes

### Selecting power supply

The wattage / amperage requirement is directly proportional to the length of LED flexible strip installed. Calculate the power requirement by multiplying the total length in meters by the maximum wattage or amperage per meter. For additional power supply stability, we recommend specifying 25% additional power capacity above the requirement. For example, a 5 meter length would require 5 meters x 18W / meter = 90W; for power supply stability, we would recommend a power supply that is capable of supplying at least 112.5W (90W + 25% \* 90W).

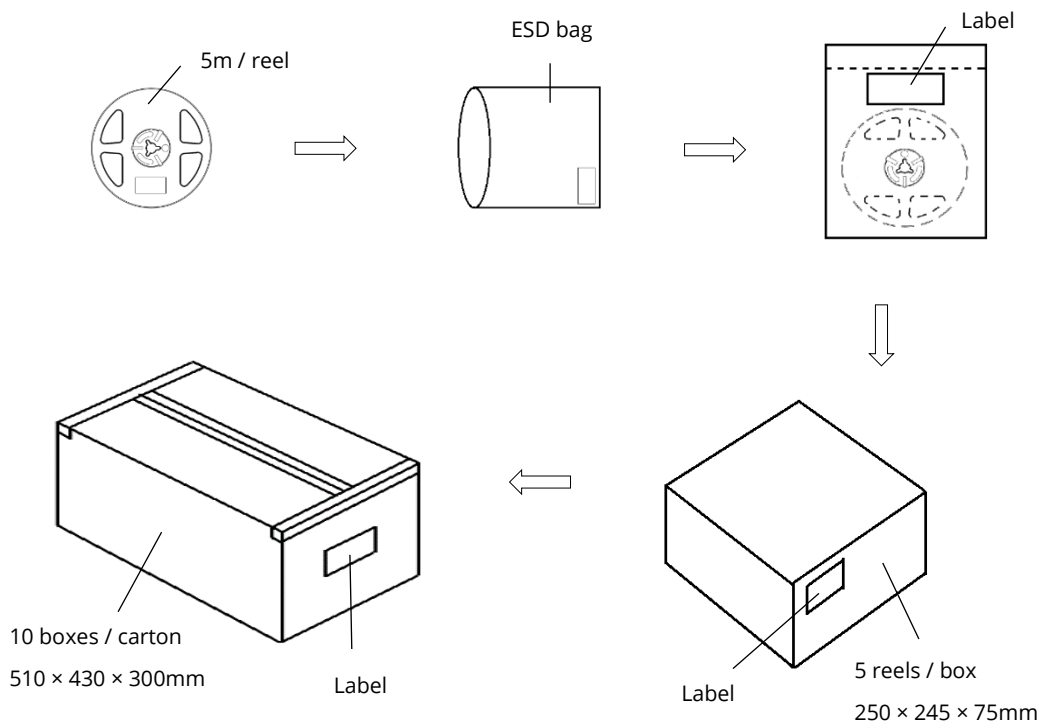
### Dimming

Our LED flex strips are compatible with 1-10V and PWM dimming systems.

### Heat management

Heatsinking is not necessary if product is used in standard indoor environments where ambient temperatures do not exceed 50°C. Our testing at  $T_a = 25^\circ\text{C}$  shows LED solder point temperatures stabilizing at 50-60°C. Maximum allowed LED solder point temperature is 105°C.

## Box packaging



- 
- Each inner box contains up to 5 reels (total maximum length is 25m). Box package size: 250 mm × 245 mm × 75 mm.
  - Each outer package contains 10 inner boxes. Box size: 510 mm × 430 mm × 300 mm.
  - Outer package is sealed with protective bubble wrap and foam. (Part numbers, lot numbers, quantity should appear on the label on the moisture-proof bag, part numbers).
  - This packaging merely intended as a reference for standard quantity orders only – please note that actual packaging can differ depending on the order circumstances.

## About Yujileds



**Our story** - Start from the superior stable red LED phosphor.

We started to make LED phosphor materials in 2006. White LEDs were still in very early stage, the industry focused on improving device brightness and efficiency via yellow phosphor very much. No one cared about the light quality. Based on this situation, we took a different approach and focused on red phosphor technology, which is the most important phosphor recipe for high CRI and/or low CCT LEDs, and it made Yuji become a JV partner with Mitsubishi Chemical from 2012.

Today, we are well known for our comprehensive research and full line-up production of LED phosphor from ultra-violet to near-infrared, and we are proud to commit to providing superior stable and efficient phosphors to the worldwide markets.

**Our technology** - Focus on LED spectrum innovation.

The industrial structure of both phosphor and LED gives us a unique view to develop our spectrum recipes. Compared to the general LED manufacturers, we have comprehensive information in evaluating the feasibility for both technical and commercial aspects. LED spectrum technology is not only about the quality of white LEDs, but also for different applications which have specialized requirements in lighting.

Yuji is one of the few companies that provide the service of designing or customizing a specific spectrum for clients, our confidence comes from the years of accumulation in focusing on the spectrum technologies and the control of LED phosphor and LED die supply-chain with thousands of successful cases in the past years. Innovating LED technologies and giving them commercial values are our eternal driving forces.

**Our product** - Yujileds®, stands for high-performance LED.

The trademark of Yujileds® is the identification of the LED products developed and manufactured by Yuji. We put our understanding of the LED technologies and the standard of our quality control into every LED we make. Regardless of any product series, we pay attention to expressing the high-performance feature and achieving the product value for clients and never compromise in pursuing the true performance.

Furthermore, we also care about every detail of any documentation we prepare for the product because we understand the importance to transmit accurate information to clients. It is even more critical for clients to obtain

---

the truth to decide the solution, rather than just a nominal high-performance.

**Our client** - Outstanding game players in different fields.

Clients are our proudest achievements, now over 200 of our clients are the best game players in their fields in more than 33 countries. We regard the clients' successes as our biggest accomplishments and appreciate their contribution in different fields, clients use our LEDs not just for simple lighting, but to design the lighting for plants, cameras, sensors, health, circadian rhythm, animals, and other industries that we have never imagined that our technologies can be utilized, that makes our work so meaningful.

**Our service** - Professional supporting team.

There is a group of people in Yuji passionate about creating maximum value for our clients. We have accumulated experience in different projects. Currently, the company gathers more than 30 experts from various fields of semiconductor, chemistry, optics, photoelectricity, circuitry, materials and color science.

Our sales team is well trained in deep LED technologies and has skilled global communication experience. Not just for sales, our team is more like a specialized consultancy to help every client succeed in different projects, and we do not only provide professional business service, but also support in the supply chain, logistics, marketing and technical discussions.

**Contact us** - We look forward to providing our efficient service for you.

**LED website:** [www.yujiintl.com](http://www.yujiintl.com)

Find Yujileds® high-performance LEDs, read our insights into a variety of advanced technologies and applications.

Contact: [info@yujigroup.com](mailto:info@yujigroup.com)

**LED lighting website:** [www.yujilighting.com](http://www.yujilighting.com)

Find our state-of-art LED lamps and luminaires designed for improving the lighting experience with the vision of illuminating the future.

Contact: [lighting@yujigroup.com](mailto:lighting@yujigroup.com)

**Online shop:** [store.yujiintl.com](http://store.yujiintl.com)

Shop your favorite Yuji Lighting product with rapid and professional service.

Contact: [webstore@yujigroup.com](mailto:webstore@yujigroup.com)