



QUICK START + INSTRUCTION GUIDE

ITEM: AOWLM1

CARDINAL

WIRELESS OPTICAL MOUSE

Welcome to audeeo

Thank you for choosing this product. We are striving for excellence in both design & comfort. But we could not do this without you. Let's take accessories to new heights together.

- 1 **Welcome**
 - 1.1 What's In The Box
- 2 **Your Wireless Mouse**
 - 2.1 Getting To Know Your Mouse
- 3 **All Features & Contents**
- 4 **Quick Start Guide**
 - 4.1 USB Receiver Installation
 - 4.2 Mouse Setup
- 5 **Specifications**
- 6 **Troubleshooting & Customer Support**
- 7 **Care & Warnings**
- 8 **Warranty & Legal**
- 9 **Notes**

1 Welcome

1.1 What's In The Box

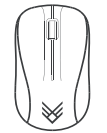
Guide Booklet



USB Receiver



Wireless Mouse



Batterie



WIRELESSMOUSE - CARDINAL

2 Your Wireless Mouse

2.1 Getting To Know Your Mouse

A **Left Mouse Button**

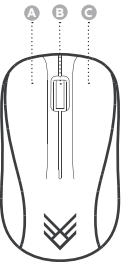
standard left click to select applications & programs

B **Scroll Wheel**

roll the scroll wheel to move up or down. It also doubles as a third button

C **Right Mouse Button**

standard right click to select pop-up menu of common commands



3 All Features & Contents



LONG / EXTENDED BATTERY LIFE
advanced tech to get more life out of batteries



PLUG & PLAY USB RECEIVER
easy to install & stable connection



HAND SCULPTED COMFORT
ergonomic design for less hand cramps



ADVANCED WHEEL SCROLLING
precise scroll wheel is faster and quieter



800DPI-1200DPI
fast & accurate reactions for precise movements



COMPATIBILITY WITH
PC/LAPTOP/DESKTOP
MAC® · WINDOWS® · CHROME™

+ OTHER DEVICES WITH A USB PORT



2.4GHZ WIRELESS
advanced 2.4 GHz wireless for powerful connectivity with virtually no delays or dropouts

- CONTENTS:**
- Mouse
 - USB Receiver
 - Quick Start & Instruction Guide
 - 1 x AA battery

WIRELESSMOUSE - CARDINAL



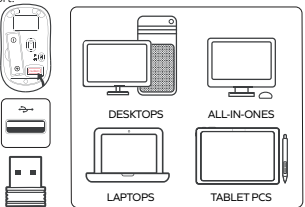
Manufactured & Distributed by:
iHip Europe Ltd., Chartwell House,
292-294 Hale Lane, London, UK, HA8 8NP
audeeo™ is a registered trademark of iHip Europe Ltd.
MADE IN CHINA



4 Quick Start Guide

4.1 USB Receiver Installation

Locate a free USB port on your device. The USB Receiver is located in the bottom of the mouse next to the battery compartment. Remove the USB Receiver from the bottom of the mouse and Plug the USB Receiver into an empty USB port.

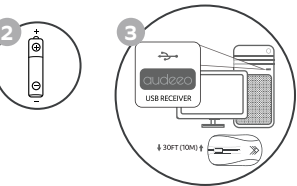


WIRELESS MOUSE - CARDINAL

4 Quick Start Guide

4.2 Mouse Setup

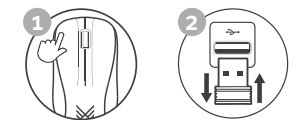
Install the included battery into the battery compartments located on the bottom of your mouse. **2** Make sure the polarity corresponds to the symbols in the battery compartment. **3** Place the mouse where you intend to use it within 30 feet (10m) of the receiver.



4 Quick Start Guide

4.2 Mouse Setup

1 The mouse will automatically turn ON when the left, right, or scroll button is pressed, and immediately connect to the USB receiver. **2** If your cursor on screen is not moving or keyboard is unresponsive, unplug and re-plug the USB receiver.



The mouse will go into a deep sleep after 10mins of no use. (RED light will be off) The mouse will wake up when left, right, or scroll button is pressed.

WIRELESS MOUSE - CARDINAL

5 Specifications

Specifications: Mouse

WORKING DISTANCE	10m (30+ft)
OPERATING FREQUENCY RANGE	2.4GHz
WORKING VOLTAGE	1.5V
WORKING CURRENT	30mA
SENSOR	Laser-grade optical sensor
SCROLL WHEEL	Yes
DPI	1200

6 Troubleshooting & Customer Support

Troubleshooting:

NO CONNECTION BETWEEN THE MOUSE AND THE RECEIVER

- Check the Nano Receiver and pull and plug again.
- Try inserting the Nano Receiver into another USB port in your computer.
- You may need to change the batteries to your mouse

WIRELESS MOUSE - CARDINAL

7 Care & Warnings

Continuous use of any Mouse may cause injury to hands, wrists, arms, neck or back. If you feel ache, numbness or weakness in these areas, consult a qualified health professional.

TO REDUCE THE RISK OF SUCH INJURIES FOLLOW THESE PRECAUTIONS:

- Position Yourself: Choose a chair that provides support for your lower back. Adjust your work surface height and your chair to assume a comfortable and natural body posture.
- Go Lightly: Type with a light touch, keeping your hands and fingers relaxed. Avoid resting your palms or your wrists on any type of surface while typing. Don't rest on edges, such as the edge of your desk.

- Take Breaks: Take frequent short breaks. Get up and walk around at least a couple of times every hour. Adjust your chair so the seat does not press in to the back of your knees.

WARNING:

Batteries may leak harmful liquids or ignitable materials or explode causing injury and product damage.




- Do not mix old and new or other battery types.
- Replace all batteries at the same time.
- Replace fully discharged batteries immediately.

8 Warranty & Legal

The condition of this warranty and our responsibilities under this warranty are as follows: Supplier's warranty is non-transferable. This warranty is limited to the original purchaser only.

- You must be able to prove the date of original purchase of the unit with a dated receipt up to one year.
- The warranty is not applicable if the product has been subject to physical abuse, improper installation, modification or repair by unauthorized third party.
- The responsibility of supplier's products shall be limited to the repair or replacement of the product as its sole discretion.
- Specifically exempt from any warranty are limited-life consumable components subject to normal wear and tear such as batteries, decorates and other accessories.
- A supplier will not take any responsibility if the failure of the unit has resulted from accident, abuse, misuse, or any unauthorized repair, modification or disassemble.
- Modification and repair of the unit should be done by authorized and qualified service personnel. Center or returned to the manufacturer.
- This warranty give you specific legal rights, and you may also have other rights which vary under local laws.

Guidelines for protection of the environment

-  This appliance should not be put into the domestic garbage at the end of its useful life, but must be disposed of at a central point for recycling of electric and electronic domestic appliances.
-  This symbol on appliance, instruction manual and packaging puts your attention to this important issue. The materials used in this appliance can be recycled. By recycling used domestic appliances you contribute an important push to the protection of our environment. Ask your local authorities for information regarding the point of recollection.
-  The information contained herein is subject to change without notice. Microsoft and Windows are trademarks or registered trademarks of Microsoft Corporation in the United States and/or other countries. Mac® is a trademark of Apple Inc., registered in the U.S. and other countries. Chrome OS™ is a trademark of Google LLC. All other trademarks are the property of their respective owners.

WIRELESS MOUSE - CARDINAL