



audeo™

---

QUICK START + INSTRUCTION GUIDE

---

ITEM: AOVERVE

## **Welcome to audeo**

Thank you for choosing this product. We are striving for excellence in both aesthetics and acoustics. But we could not do this without you. Let's take sound to new heights together.

**VERVE**  
**WIRELESS**  
PORTABLE SPEAKER

# 1 **Welcome**

1.1 What's In The Box

---

# 2 **Your Verve Wireless Speaker**

2.1 Getting To Know Your Speaker

2.2 Control Panel Features

---

# 3 **Quick Start Guide**

3.1 Charging & Powering ON

3.2 Bluetooth Pairing

---

# 4 **Button Functions**

---

# 5 **All Features & Contents**

---

# 6 **Specifications**

---

# 7 **Troubleshooting**

---

# 8 **Care & Maintenance**

---

# 9 **Warranty & Legal**

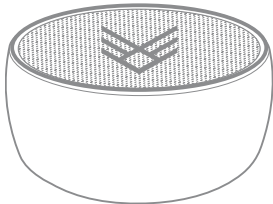
# 1 Welcome

## 1.1 What's In The Box

### GUIDE BOOKLET



### SPEAKER



### MICRO USB CABLE



### AUXILIARY CABLE



## 2 Your Verve Wireless Speaker

### 2.1 Getting To Know Your Speaker

#### **A** METAL FINISH

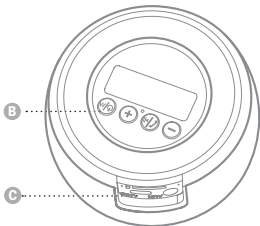
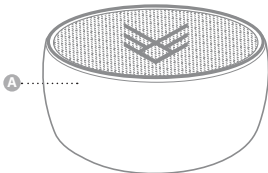
Alluminum alloy finish.

#### **B** CONTROL PANEL

This is the area that controls the power (ON/OFF), multiple modes, volume, tracks, pause, play, & phone functions.

#### **C** BACK PANEL

This area is for charging, listening to music on a micro SD card or connecting a device with an auxiliary cable.



## 2 Your Verve Wireless Speaker

### 2.2 Control Panel Features

#### **A VOLUME (-) / PREVIOUS TRACK**

This button goes to the previous track, and decrease volume.

#### **B PAUSE/PLAY/PHONE BUTTON**

This multi purpose button pauses / plays / receive calls / hang up calls.

#### **C VOLUME (+) / NEXT TRACK**

This button skips to the next track, and increases volume.

#### **D POWER/MODE BUTTON**

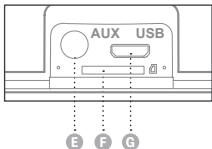
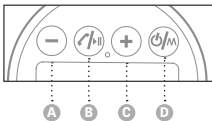
Power your speaker (ON/OFF) and switch between different modes.

#### **E AUX INPUT PORT**

This port is used for connecting to devices with an auxiliary cable.

#### **F SD CARD SLOT**

This slot can play from a pre-loaded SD card.



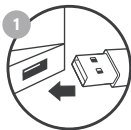
#### **G MICRO USB CHARGING PORT**

This port is used for charging your speaker with a micro USB cable.

### 3 Quick Start Guide

#### 3.1 Charging & Powering ON

- 1 Connect the Micro USB cable (only use the provided cable) to a computer USB port or a USB wall charger. Plug the other end of the micro USB cable into the Micro USB charging port (G) located on the back of the speaker. While charging the LED indicator light will turn RED and then turn OFF when the battery is fully charged.
- 2 Hold the POWER/MODE button (D) to turn ON your speaker. You will either hear a voice prompt or a start up noise. The speaker will enter Bluetooth pairing mode automatically.



NOTE: please refer to the diagram on 2.2



## 3 Quick Start Guide

### 3.2 Bluetooth Pairing

- 1 Hold the MODE/POWER button (D) to turn ON your speaker. You will either hear a voice prompt or a start up noise. The speaker will enter Bluetooth pairing mode automatically.
- 2 Ensure Bluetooth is enabled on your smartphone or music device. Your device will start searching for wireless devices. The speaker will appear as "audeo Verve" in the list of available Bluetooth devices.
- 3 Select "audeo Verve" the speaker will emit a tone or a voice prompt indicating that your speaker has been successfully paired with your device.  
\*if a password is required, enter the following '0000' (4-zeros)



NOTE: please refer to the diagram on 2.2

## 4 Button Functions

### 1 ANSWER & HANG UP CALLS

When there is an incoming call, short press the Pause/Play/Phone Button (B) to answer the call, press the Pause/Play/Phone Button (B) once again to hang up the call.

### 2 REJECT CALLS & REDIAL

When there is an incoming call, long press the Pause/Play/Phone Button (B). To redial the last dialed number press the Pause/Play/Phone Button (B) twice.

### 3 PAUSE & PLAY MUSIC

When music is playing, press the Pause/Play/Phone Button (B) once to pause music, press the button once again to play music.

### 4 NEXT & LAST TRACK

When playing music, press the Volume (+) / Next Track button (C) once to skip to the next track, press the Volume (-) / Previous Track button (A) once to skip to the previous track.

### 5 VOLUME UP & DOWN

When in a call or playing music, hold the Volume (+) / Next Track button (C) to increase the volume, hold the Volume (-) / Previous Track button (A) to decrease the volume.

### 6 MODE CHANGE

Press the Mode Button (U/M) to switch between Bluetooth, SD cards, and AUX input.

NOTE: please refer to the diagram on 2.2

## 5 All Features & Contents



UP TO 4+ HOURS  
OF NON-STOP  
PLAY TIME



**BUILT-IN MIC:**  
hands-free talking  
with volume control



**RECHARGEABLE:**  
lithium ion battery with  
extended listening time



**MULTI DEVICE:**  
will work with any  
Bluetooth® device

- mobile phones
- computers
- tablets



**AUX-IN:**  
fully compatible with  
auxiliary cables



**BETTER AUDIO:**  
enhanced acoustics  
treble & bass



**METAL FINISH:**  
aluminum alloy finish  
extremely durable

### CONTENTS:

- Verve SPEAKER
- MICRO USB CHARGING CABLE
- AUXILIARY CABLE
- MANUAL

## 6 Specifications

SPECIFICATIONS:	
FREQUENCY RESPONSE	2402- 2480MHz
DRIVER UNIT	40mm
BATTERY	400mAh Lithium Ion
WORKING TIME	Up to 4 hours
CHARGING TIME	2-3 hours
IMPEDANCE	4 $\Omega$
OPERATION RANGE	10m

**NOTE:**

working time depends on volume levels

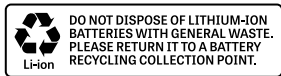
- lower volume will prolong your estimated battery life.
- higher volume will decrease your estimated battery life.

## 7 Troubleshooting

<b>TROUBLESHOOTING:</b>	
<b>NO POWER</b>	Recharge your speaker using the included micro USB cable.
<b>MUSIC IS NOT PLAYING OVER BLUETOOTH</b>	Make sure your Bluetooth device has A2DP profile. Check if both devices are paired and connected over Bluetooth. Restart the speaker to reconnect your Bluetooth device.
<b>BLUETOOTH DEVICE WILL NOT RECONNECT WITH THE SPEAKER</b>	Navigate to your Bluetooth settings menu on your Bluetooth device, tap "audeo Verve" and select "Forget". Now follow the steps to pair your device again.

## 8 Care & Maintenance

- DO NOT expose the unit to liquid, moisture, or humidity to avoid damage to the product's internal circuitry.
- DO NOT use abrasive cleaning solvents to clean the unit.
- DO NOT expose the unit to extremely high or low temperatures as this will shorten the life of the electronic device, destroy the battery, and/or distort certain plastic parts.
- DO NOT dispose of the unit in fire as they may explode or combust.
- DO NOT expose the unit to and/or use sharp objects on the speaker as this will cause scratches and damage.
- DO NOT attempt to disassemble the unit. In the event that the unit does not function properly, return it to the store where it was purchased.



## 9 Warranty & Legal

The condition of this warranty and our responsibilities under this warranty are as follows:

Supplier's warranty is non-transferable. This warranty is limited to the original purchaser only.

- You must be able to prove the date of original purchase of the unit with a dated receipt.
- The warranty is not applicable if the product has been subject to physical abuse, improper installation, modification or repair by unauthorized third party.
- The responsibility of supplier's products shall be limited to the repair or replacement of the product as its sole discretion.
- Specifically exempt from any warranty are limited-life consumable components subject to normal wear and tear such as batteries, decorates and other accessories.
- A supplier will not take any responsibility if the failure of the unit has resulted from accident, abuse, misuse, or any unauthorized repair, modification or disassemble.
- Modification and repair of the unit should be done by authorized and qualified service personnel, Center or returned to the manufacturer.
- This warranty give you specific legal rights, and you may also have other rights which vary under local laws.



The Bluetooth® word mark and logos are registered trademarks owned by Bluetooth SIG, Inc. and any use of such marks by iHip Europe Ltd is under license. Other trademarks and trade names are those of their respective owners.



This appliance should not be put into the domestic garbage at the end of its useful life, but must be disposed of at a central point for recycling of electric and electronic domestic appliances.



This symbol on appliance, instruction manual and packaging puts your attention to this important issue. The materials used in this appliance can be recycled. By recycling used domestic appliances



you contribute an important push to the protection of our environment. Ask your local authorities for information regarding the point of recollection.



Manufactured & Distributed by:  
iHip Europe Ltd., Chartwell House,  
292-294 Hale Lane, London, UK, HA8 8NP

audeo™ is a registered trademark of iHip Europe Ltd.

**MADE IN CHINA**