



audeo™

QUICK START + INSTRUCTION GUIDE

ITEM: AOJAVE

Welcome to audeo

Thank you for choosing this product. We are striving for excellence in both aesthetics and acoustics. But we could not do this without you. Let's take sound to new heights together.

JAVELIN
WIRELESS
EARPHONES

1 **Welcome**

1.1 What's In The Box

2 **Your Javelin Wireless Earphones**

2.1 Getting To Know Your Earphones

2.2 Control Panel Features

3 **Quick Start Guide**

3.1 Charging & Powering ON

3.2 Bluetooth Pairing

4 **Button Functions**

5 **All Features & Contents**

6 **Specifications**

7 **Troubleshooting**

8 **Care & Maintenance**

9 **Warranty & Legal**

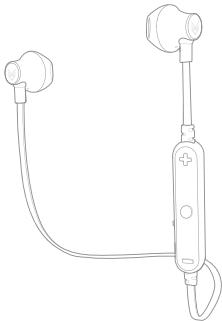
1 Welcome

1.1 What's In The Box

GUIDE BOOKLET



EARPHONES



MICRO USB CABLE



2 Your Javelin Wireless Earphones

2.1 Getting To Know Your Earphones

A PERFECT FIT

ear tips that are designed for all inner ears types

B METAL FINISH

Outer alloy for extra durability

C FLAT CORD

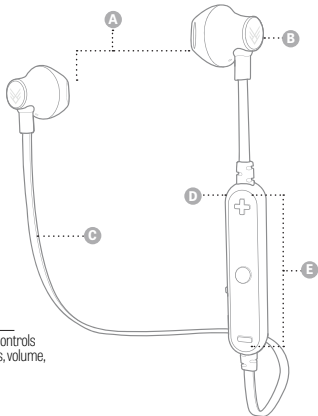
Tangle free cable

D MICROPHONE

Answer calls hands-free

E CONTROL PANEL

This is the main area that controls both microphone functions, volume, and tracks



2 Your Javelin Wireless Earphones

2.2 Control Panel Features

A VOLUME (+) / NEXT TRACK

This button skips to the next track, and increases volume.

B POWER/MODE/PHONE BUTTON

This button will do the following

- Power on & off
- Pause & play music
- Answer & hand up calls
- Reject calls
- Use of smartphone assistant:
 - Google Assistant™
 - Siri®

C MICRO USB CHARGING PORT

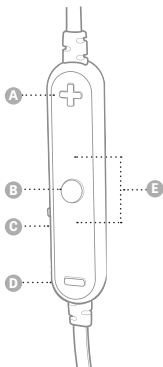
This is the area to plug-in and charge your earphones

D VOLUME (-) / PREVIOUS TRACK

This button goes to the previous track, and decrease volume..

E LED INDICATOR LIGHT

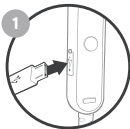
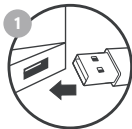
Indicates if the earphones are ON / OFF, pairing, or charging.



3 Quick Start Guide

3.1 Charging & Powering ON

- 1 Connect the Micro USB cable (only use the provided cable) to a computer USB port or a USB wall charger. Plug the other end of the micro USB cable into the Micro USB charging port (C) located on the left side of the microphone. While charging the LED indicator light (E) will turn RED and then turn BLUE when the battery is fully charged.
- 2 Ensure the earphones are turned off, then press and hold the Power/ Mode/ Phone button (C) for 3-5 seconds to turn the earphones ON. The earphones will enter Bluetooth pairing mode automatically and emit a tone as the LED indicator light (A) will flash BLUE and RED.

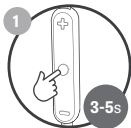


NOTE: please refer to the diagram on 2.2

3 Quick Start Guide

3.2 Bluetooth Pairing

- 1 Ensure the earphones are turned off, then press and hold the Power/ Mode/ Phone button (B) for 3-5 seconds to turn the earphones ON. The earphones will enter Bluetooth pairing mode automatically and emit a tone as the LED indicator light (E) will flash BLUE and RED. Make sure your device has Bluetooth enabled
- 2 Ensure Bluetooth is enabled on your smartphone or music device. Your device will start searching for wireless devices. The earphones will appear as "audeo Javelin" in the list of available Bluetooth devices.
- 3 Select "audeo Javelin" The LED will begin to slowly blink blue, and the earphones will emit a tone to indicate that it has been successfully paired with your device.



NOTE: please refer to the diagram on 2.2

4 Button Functions

1 ANSWER & HANG UP CALLS

When there is an incoming call, short press the Pause/Play/Phone Button (B) to answer the call, press the Pause/Play/Phone Button (B) once again to hang up the call.

2 REJECT CALLS

When there is an incoming call, long press the Pause/Play/Phone Button (B) for 2-3 seconds to reject the call.

3 PAUSE & PLAY MUSIC

When music is playing, press the Pause/Play/Phone Button (D) once to pause music, press the button once again to play music.

4 NEXT & LAST TRACK

When playing music, press the Volume (+) / Next Track button (A) once to skip to the next track, press the Volume (-) / Previous Track button (D) once to skip to the previous track.

5 VOLUME UP & DOWN

When in a call or playing music, hold the Volume (+) / Next Track button (A) to increase the volume, hold the Volume (-) / Previous Track button (D) to decrease the volume.

6 SMARTPHONE ASSISTANT

Double press the Pause/Play/Phone Button (B) to activate voice assistant (Google Assistant™ or Siri®) on your smartphone.

NOTE: please refer to the diagram on 2.2

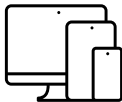
5 All Features & Contents



BUILT-IN MIC:
hands-free talking
with volume control



RECHARGEABLE:
lithium ion battery with
extended listening time



MULTI DEVICE:
will work with any
Bluetooth® device

- mobile phones
- computers
- tablets



**VOICE ASSISTANT
ACTIVATED & READY**

Works with your phone's
digital assistant



BETTER AUDIO:
enhanced acoustics
treble & bass



METAL FINISH:
aluminum alloy finish
extremely durable

CONTENTS:

- JAVELIN EARPHONES
- MICRO USB CHARGING CABLE
- MANUAL

6 Specifications

SPECIFICATIONS:	
FREQUENCY RESPONSE	20Hz - 20kHz
DRIVER UNIT	10mm
BATTERY	75mAh Lithium Ion
WORKING TIME	Up to 5+ hours
CHARGING TIME	1-2 hours
IMPEDANCE	32Ω
OPERATION RANGE	10m

NOTE:

working time depends on volume levels

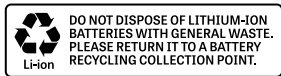
- lower volume will prolong your estimated battery life.
- higher volume will decrease your estimated battery life.

7 Troubleshooting

TROUBLESHOOTING:	
NO POWER	Recharge your Earphones using the included micro USB cable.
MUSIC IS NOT PLAYING OVER BLUETOOTH	Make sure your Bluetooth device has A2DP profile. Check if both devices are paired and connected over Bluetooth. Restart the Earphones to reconnect your Bluetooth device.
BLUETOOTH DEVICE WILL NOT RECONNECT WITH THE EARPHONES	Navigate to your Bluetooth settings menu on your Bluetooth device, tap "audeo Javelin" and select "Forget". Now follow the steps to pair your device again.

8 Care & Maintenance

- DO NOT expose the unit to liquid, moisture, or humidity to avoid damage to the product's internal circuitry.
- DO NOT use abrasive cleaning solvents to clean the unit.
- DO NOT expose the unit to extremely high or low temperatures as this will shorten the life of the electronic device, destroy the battery, and/or distort certain plastic parts.
- DO NOT dispose of the unit in fire as they may explode or combust.
- DO NOT expose the unit to and/or use sharp objects on the Earphones as this will cause scratches and damage.
- DO NOT attempt to disassemble the unit. In the event that the unit does not function properly, return it to the store where it was purchased.



9 Warranty & Legal

The condition of this warranty and our responsibilities under this warranty are as follows:

Supplier's warranty is non-transferable. This warranty is limited to the original purchaser only.

- You must be able to prove the date of original purchase of the unit with a dated receipt.
- The warranty is not applicable if the product has been subject to physical abuse, improper installation, modification or repair by unauthorized third party.
- The responsibility of supplier's products shall be limited to the repair or replacement of the product as its sole discretion.
- Specifically exempt from any warranty are limited-life consumable components subject to normal wear and tear such as batteries, earbuds and other accessories.
- A supplier will not take any responsibility if the failure of the unit has resulted from accident, abuse, misuse, or any unauthorized repair, modification or disassemble.
- Modification and repair of the unit should be done by authorized and qualified service personnel, Center or returned to the manufacturer.
- This warranty give you specific legal rights, and you may also have other rights which vary under local laws.



© The Bluetooth® word mark and logos are registered trademarks owned by Bluetooth SIG, Inc. and any use of such marks by iHip Europe Ltd is under license. Other trademarks and trade names are those of their respective owners.



This appliance should not be put into the domestic garbage at the end of its useful life, but must be disposed of at a central point for recycling of electric and electronic domestic appliances.



This symbol on appliance, instruction manual and packaging puts your attention to this important issue. The materials used in this appliance can be recycled. By recycling used domestic appliances you contribute an important push to the protection of our environment. Ask your local authorities for information regarding the point of recollection.

Siri® is a trademark of Apple Inc., registered in the U.S. and other countries.
Google Assistant is a trademark of Google Inc.



Manufactured & Distributed by:
iHip Europe Ltd., Chartwell House,
292-294 Hale Lane, London, UK, HA8 8NP

audeo™ is a registered trademark of iHip Europe Ltd.

MADE IN CHINA