



audeo™

QUICK START + INSTRUCTION GUIDE

ITEM: AOIND

Welcome to audeo

Thank you for choosing this product. We are striving for excellence in both aesthetics and acoustics.

But we could not do this without you.

Let's take sound to new heights together.

INDULGE

WIRELESS HEADPHONES

1 **Welcome**

1.1 What's In The Box

2 **Your Indulge Wireless Headphones**

2.1 Getting To Know Your Headphones

2.2 Control Panel Features

3 **Quick Start Guide**

3.1 Charging & Powering ON

3.2 Bluetooth Pairing

4 **Button Functions**

5 **All Features & Contents**

6 **Specifications**

7 **Troubleshooting**

8 **Care & Maintenance**

9 **Warranty & Legal**

1 Welcome

1.1 What's In The Box

GUIDE BOOKLET



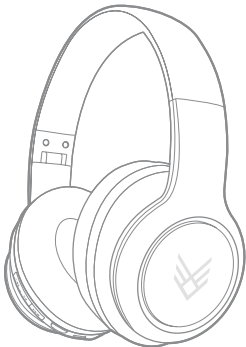
MICRO USB CABLE



AUXILIARY CABLE



HEADPHONES



INDULGE WIRELESS HEADPHONES

2 Your Indulge Wireless Headphones

2.1 Getting To Know Your Headphones

A HEAD CUSHION

Silicone cushion for a better grip on your head

B EAR CUSHIONS

Soft ear cushions for long listening

C RUBBER COATING

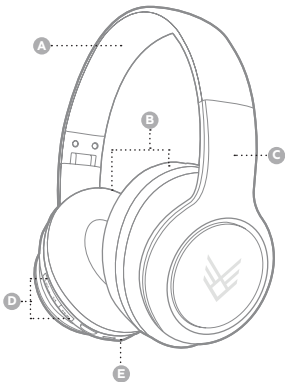
For a more durable touch and feel

D CONTROL PANEL

This is the main area that controls both microphone functions, volume, & tracks

E MICROPHONE

Answer calls hands-free



2 Your Indulge Wireless Headphones

2.2 Control Panel Features

A POWER SWITCH

Powers your headphones ON / OFF.

B VOLUME (+) / NEXT TRACK

This button skips to the next track, and increases volume.

C PAUSE/PLAY/PHONE BUTTON

- This multi purpose button pauses / plays / receive calls / hang up calls.

- Use of smartphone assistant:

- Google Assistant™ • Siri®

D VOLUME (-) / PREVIOUS TRACK

This button goes to the previous track, and decrease volume.

E LED INDICATOR LIGHT

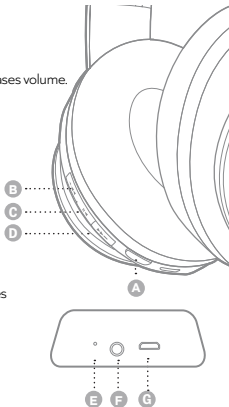
This light will illuminate when the headphones turns ON / OFF / pairing / connected.

F AUX INPUT

This port is used for connecting to devices with an auxiliary cable.

G MICRO USB CHARGING PORT

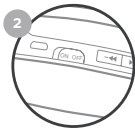
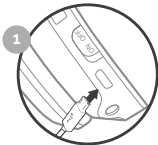
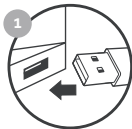
Area to plug-in the micro USB cable to charge the headphones.



3 Quick Start Guide

3.1 Charging & Powering ON

- 1 Connect the Micro USB cable (only use the provided cable) to a computer USB port or a USB wall charger. Plug the other end of the micro USB cable into the Micro USB charging port (G) located on the left side of the headphone. While charging the LED indicator light (E) will turn RED and then turn BLUE when the battery is fully charged.
- 2 Ensure the Headphones are turned off, then slide the power switch to turn the Headphones ON. The Headphones will enter Bluetooth pairing mode automatically and emit a tone as the LED indicator light (E) will flash BLUE and RED.



3 Quick Start Guide

3.2 Bluetooth Pairing

- 1 Ensure the Headphones are turned off, then slide the power switch to turn the Headphones ON. The Headphones will enter Bluetooth pairing mode automatically and emit a tone as the LED indicator light (E) will flash BLUE and RED. Make sure your device has Bluetooth enabled
- 2 Ensure Bluetooth is enabled on your smartphone or music device. Your device will start searching for wireless devices. The Headphones will appear as "audeo Indulge" in the list of available Bluetooth devices. Select "audeo Indulge" The
- 3 LED will begin to slowly blink blue, and the Headphones will emit a tone to indicate that it has been successfully paired with your device.



NOTE: please refer to the diagram on 2.2

4 Button Functions

1 ANSWER & HANG UP CALLS

When there is an incoming call, short press the Pause/Play/Phone Button (C) to answer the call, press the Pause/Play/Phone Button (C) once again to hang up the call.

2 REJECT CALLS

When there is an incoming call, long press the Pause/Play/Phone Button (C) for 2-3 seconds to reject the call.

3 REDIAL LAST NUMBER

Double press the Pause/Play/Phone Button (C) to call the last number in the list of call history.

4 PAUSE & PLAY MUSIC

When music is playing, press the Pause/Play/Phone Button (C) once to pause music, press the button once again to play music.

5 NEXT & LAST TRACK

When playing music, press the Volume (+) / Next Track button (B) to skip to the next track, press the Volume (-) / Previous Track button (D) to skip to the previous track.

6 VOLUME UP & DOWN

When in a call or playing music, press and hold the Volume (+) / Next Track button (B) once to increase the volume, press and hold the Volume (-) / Previous Track button (D) once to decrease the volume.

7 VOICE ASSISTANT

Press and hold the Multi Function Button (C) for 1-2 seconds until you hear the "beep" prompt to activate Voice Assistant (Google Assistant™ or Siri®) on your smartphone.

NOTE: please refer to the diagram on 2.2

5 All Features & Contents



EXTENDED TIME:
lithium ion battery with
20hrs of listening time



BUILT-IN MIC:
hands-free talking
with volume control



RECHARGEABLE:
lithium ion battery with
extended listening time



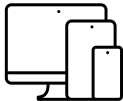
**VOICE ASSISTANT
ACTIVATED & READY**
Works with your phone's
digital assistant



AUX-IN:
fully compatible with
auxiliary cables



BETTER AUDIO:
enhanced acoustics
treble & bass



MULTI DEVICE:

will work with any
Bluetooth® device

- mobile phones
- computers
- tablets

CONTENTS:

- INDULGE HEADPHONES
- MICRO USB CHARGING CABLE
- AUXILIARY CABLE
- MANUAL

6 Specifications

SPECIFICATIONS:	
BLUETOOTH VERSION	5.0
BLUETOOTH FREQUENCY	2.402-2.480GHz
FREQUENCY RESPONSE	20Hz - 20KHz
DRIVER UNIT	40mm
BATTERY	400mAh Lithium Ion
WORKING TIME	Up to 20 hours
CHARGING TIME	About 2 hours
IMPEDANCE	32Ω
OPERATION RANGE	10m

NOTE:

working time depends on volume levels

- lower volume will prolong your estimated battery life.

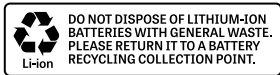
- higher volume will decrease your estimated battery life.

7 Troubleshooting

TROUBLESHOOTING:	
NO POWER	Recharge your Headphones using the included micro USB cable.
MUSIC IS NOT PLAYING OVER BLUETOOTH	Make sure your Bluetooth device has A2DP profile. Check if both devices are paired and connected over Bluetooth. Restart the Headphones to reconnect your Bluetooth device.
BLUETOOTH DEVICE WILL NOT RECONNECT WITH THE HEADPHONES	Navigate to your Bluetooth settings menu on your Bluetooth device, tap "audeo Indulge" and select "Forget". Now follow the steps to pair your device again.

8 Care & Maintenance

- DO NOT expose the unit to liquid, moisture, or humidity to avoid damage to the product's internal circuitry.
- DO NOT use abrasive cleaning solvents to clean the unit.
- DO NOT expose the unit to extremely high or low temperatures as this will shorten the life of the electronic device, destroy the battery, and/or distort certain plastic parts.
- DO NOT dispose of the unit in fire as they may explode or combust.
- DO NOT expose the unit to and/or use sharp objects on the Headphones as this will cause scratches and damage.
- DO NOT attempt to disassemble the unit. In the event that the unit does not function properly, return it to the store where it was purchased.



9 Warranty & Legal

The condition of this warranty and our responsibilities under this warranty are as follows:

Supplier's warranty is non-transferable. This warranty is limited to the original purchaser only.

- You must be able to prove the date of original purchase of the unit with a dated receipt.
- The warranty is not applicable if the product has been subject to physical abuse, improper installation, modification or repair by unauthorized third party.
- The responsibility of supplier's products shall be limited to the repair or replacement of the product as its sole discretion.
- Specifically exempt from any warranty are limited-life consumable components subject to normal wear and tear such as batteries, earbuds and other accessories.
- A supplier will not take any responsibility if the failure of the unit has resulted from accident, abuse, misuse, or any unauthorized repair, modification or disassemble.
- Modification and repair of the unit should be done by authorized and qualified service personnel, Center or returned to the manufacturer.
- This warranty give you specific legal rights, and you may also have other rights which vary under local laws.



The Bluetooth® word mark and logos are registered trademarks owned by Bluetooth SIG, Inc. and any use of such marks by iHip Europe Ltd is under license. Other trademarks and trade names are those of their respective owners.



This appliance should not be put into the domestic garbage at the end of its useful life, but must be disposed of at a central point for recycling of electric and electronic domestic appliances.



This symbol on appliance, instruction manual and packaging puts your attention to this important issue. The materials used in this appliance can be recycled. By recycling used domestic appliances you contribute an important push to the protection of our environment. Ask your local authorities for information regarding the point of recollection.

Siri® is a trademark of Apple Inc., registered in the U.S. and other countries.
Google Assistant™ is a trademark of Google Inc.



Manufactured & Distributed by:

iHip Europe Ltd., Chartwell House,
292-294 Hale Lane, London, UK, HA8 8NP

audeo™ is a registered trademark of iHip Europe Ltd.

MADE IN CHINA