



adeoTM

QUICK START + INSTRUCTION GUIDE

ITEM: AOESCAPE

Welcome to audeo

Thank you for choosing this product. We are striving for excellence in both aesthetics and acoustics.

But we could not do this without you.

Let's take sound to new heights together.

ESCAPE SPORT

TRUE WIRELESS EARPHONES
WITH FLEXIBLE EARHOOKS

1 **Welcome**

1.1 What's In The Box

2 **Your Escape Sport Wireless Earphones**

2.1 Getting To Know Your Earphones

2.2 Item Features

3 **Quick Start Guide**

3.1 Charging & Powering ON

3.2 Bluetooth Pairing

4 **Button Functions**

5 **All Features & Contents**

6 **Specifications**

7 **Troubleshooting**

8 **Care & Maintenance**

9 **Warranty & Legal**

1 Welcome

1.1 What's In The Box

GUIDE BOOKLET



EARPHONES

CHARGING CASE STATION

TYPE-C CABLE



EAR TIPS



SMALL

MEDIUM

LARGE



2 Your Escape Sport Wireless Earphones

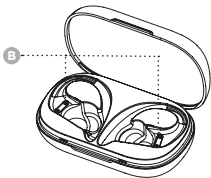
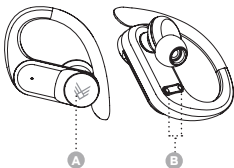
2.1 Getting To Know Your Earphones

A MULTI-FUNCTION BUTTON

Simply touch to power ON and OFF / pause / play / call / hang up / reject / volume / track.

B CHARGING CONTACTS

Small round metal pieces located on both the LEFT & RIGHT earphones & in the charging case station in the designated earphones notches.

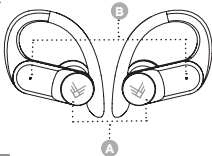


2 Your Escape Sport Wireless Earphones

2.2 Item Features

A MULTI-FUNCTION BUTTON

- Power on & off
- Pause & play music
- Answer & hand up calls
- Reject calls
- Volume
- Track
- Use of smartphone assistant:
 - Google Assistant™ • Siri®



B EARPHONES STATUS LIGHT

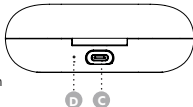
Indicates if the earphones are on/off, pairing, or charging. The light will be RED when charging in the charging case station.

C TYPE-C USB CHARGING PORT

This is the area to plug-in and charge your charging case station. If the earphones are in the charging case station they will charge first.

D CHARGING CASE STATUS LIGHT

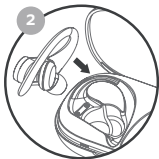
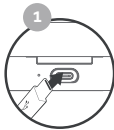
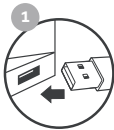
The light will flash RED when being charged, and the RED light will remain on when full charged.



3 Quick Start Guide

3.1 Charging & Powering ON

- 1 Connect the Type-C cable (only use the provided cable) to a computer USB port or a USB wall charger. Plug the other end of the Type-C cable into the Type-C charging port (C) located on the back side of the charging case station. While charging the LED indicator light (D) will flash RED. When the battery is fully charged, the RED LED on the charging case station will remain on.
- 2 Open the top of the charging case station and place your earphones in their initialled/designated areas. Once properly in place the LED lights (B) on the earphones will illuminate RED. When the earphones are fully charged the RED LED light will automatically turn off.

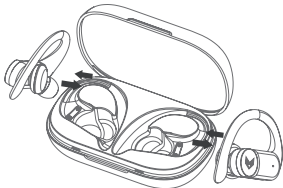


NOTE: please refer to the diagram on 2.2

3 Quick Start Guide

3.2 Turning ON/OFF - 2 Options

- 1 The first option is when your earphones are turned off, touch and hold the Multi-Function button (A) for 5 seconds to turn ON your earphones. If your earphones are already ON, touch and hold the Multi-Function button (A) for 5 seconds to turn OFF your earphones.
- 2 The second option is when you remove your earphones from the charging case station they will turn ON automatically. When you put them back in the charging case station they will turn OFF automatically and begin to charge if needed.



NOTE: please refer to the diagram on 2.2

3 Quick Start Guide

3.3 Bluetooth Pairing - Method 1

- 1 Ensure the earphones are turned off, then touch and hold the Multi-Function button (A) for 5 seconds to turn the earphones ON. The earphones will enter Bluetooth pairing mode automatically and emit a tone as the LED indicator light (B) will flash RED and BLUE. Make sure your device has Bluetooth turned ON.
- 2 Ensure Bluetooth is enabled on your smartphone or music device. Your device will start searching for wireless devices. The earphones will appear as "audeo Escape" in the list of available Bluetooth devices.
- 3 Select "audeo Escape" the LED lights will stop on the earphones and will say "Bluetooth Connected" to indicate that it has been successfully paired with your device.



NOTE: please refer to the diagram on 2.2

3 Quick Start Guide

3.4 Bluetooth Pairing - Method 2

- 1 Pick up both earphones from the charging case station your earphones will automatically enter pairing mode. They will automatically pair to one another and either the RIGHT or LEFT earphone will flash BLUE & RED steadily. Your earphones are now waiting to be paired to a device.
- 2 Ensure Bluetooth is enabled on your smartphone, tablet, computer or music device. The earphones will appear as "audeo Escape" in the list of available Bluetooth devices.
- 3 Select "audeo Escape" and connect.



3 Quick Start Guide

3.5 Single Earphone Mode

- 1 Remove either the RIGHT or LEFT earphone from the charging case station or only turning one of the earphones ON.
- 2 Turn ON by holding the Multi-Function button (A) until you hear the prompt. After a few seconds the earphones will go into pairing mode (flashing RED & BLUE).
- 3 Open the Bluetooth setting on your device and pair again if needed. The earphones will appear as "audeo Escape" in the list of available Bluetooth devices. Select "audeo Escape" and connect.



4 Button Functions

1 ANSWER & HANG UP CALLS

When there is an incoming call, touch the Multi-Function Button (A) on the RIGHT or LEFT earphone once to answer the call, touch the Multi-Function Button (A) once again to hang up the call.

NOTE: please refer to the diagram on 2.2

2 REJECT CALLS

When there is an incoming call, touch and hold the Multi-Function Button (A) on the RIGHT or LEFT earphone for 2 seconds to reject the call.

3 PAUSE & PLAY MUSIC

When playing music, touch the Multi-Function Button (A) on the LEFT or RIGHT earphone once to pause music, touch the button once again to play music.

4 NEXT & LAST TRACK

When playing music, double touch the Multi-Function Button (A) on the RIGHT earphone to skip to the next track, double touch the Multi-Function Button (A) on the LEFT earphone to skip to the previous track.

5 VOLUME UP & DOWN

When playing music, triple touch the Multi-Function Button (A) on the RIGHT earphone to increase the volume, triple touch the Multi-Function Button (A) on the LEFT earphone to decrease the volume.

6 VOICE ASSISTANT

Hold the Multi Function Button(A) on either the LEFT or RIGHT earphone for 2 seconds to activate Voice Assistant (Google Assistant™ or Siri®) on your smartphone.

NOTE: please refer to the diagram on 2.2

5 All Features & Contents



EXTENDED TIME:
up to 10hrs on a single charge once removed from charging case



MICROPHONE:
hands-free talking with pause & play



READY TO USE:
50% pre-charged lithium ion battery



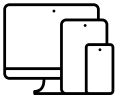
VOICE ASSISTANT ACTIVATED & READY
works with your phone's digital assistant



BETTER AUDIO:
enhanced acoustics treble & bass



WATERPROOF:
IPX4 water resistant from moisture at all angles



MULTI DEVICE:
will work with any Bluetooth® device

- mobile phones
- computers
- tablets

CONTENTS:

- ESCAPE SPORT WIRELESS EARPONES
- CHARGING CASE STATION
- Type-C CHARGING CABLE
- MANUAL

6 Specifications

Specifications:	
BLUETOOTH VERSION	5.0
FREQUENCY RESPONSE	20-20 KHz
DRIVER UNIT	13 mm
OPERATION RANGE	≥10 m
EARPHONES BATTERIES	80 mAh Lithium Ion Each
CHARGING CASE STATION	400 mAh Lithium Ion
PLAY TIME	Up to 10 hours
CHARGING CASE STATION SUPPLY POWER FOR EARPHONES	Up to 15 hours
EARPHONE CHARGING TIME	About 1.5 hour
CHARGING CASE STATION CHARGE TIME	About 2 hours

NOTE: working time depends on volume levels

- lower volume will prolong your estimated battery life.
- higher volume will decrease your estimated battery life.

7 Troubleshooting & Customer Support

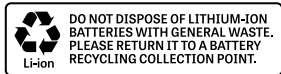
Troubleshooting:	
NO POWER	<ul style="list-style-type: none">• Recharge your earphones using the included charging case station and Type-C cable.
MUSIC IS NOT PLAYING OVER BLUETOOTH	<ul style="list-style-type: none">• Make sure your Bluetooth device has A2DP profile. Check if both devices are paired and connected over Bluetooth. Restart the earphones to reconnect your Bluetooth device.
BLUETOOTH DEVICE WILL NOT RECONNECT WITH THE EARPHONES	<ul style="list-style-type: none">• Navigate to the Bluetooth settings menu on your Bluetooth device, tap "audeo Escape" and select "Forget". Now follow the steps to pair your device again.
THE BUTTONS ON THE TRUE WIRELESS EARPHONES ARE NOT WORKING	<ul style="list-style-type: none">• Turn your Escape sport Wireless Earphones OFF, reconnect after a few seconds.• Make sure that the Bluetooth function is activated on your Bluetooth device.
POOR SOUND RECEPTION / QUALITY OF AUDIO NOT AS GOOD	<ul style="list-style-type: none">• Make sure your earphones are charged.• Make sure you are within 10m of your Bluetooth device.

7 Troubleshooting Continued

Troubleshooting continued:	
ONE EARPHONE IS NOT CONNECTED TO THE OTHER ONE	<ul style="list-style-type: none">• Power off both earphones by holding the Multi-Function button for 5 seconds.• Then power both on by holding the same button for 3 seconds. The earphones will connect automatically.
EARPHONES ARE NOT CHARGING	<ul style="list-style-type: none">• Make sure the earphones are properly placed in the charging case station.• Make sure the charging case station battery is fully charged.• Make sure there is no dirt or debris covering the charging conductors within the charging case station or on the earphones.

8 Care & Maintenance

- DO NOT expose the unit to liquid, moisture, or humidity to avoid damage to the product's internal circuitry.
- DO NOT use abrasive cleaning solvents to clean the unit.
- DO NOT expose the unit to extremely high or low temperatures as this will shorten the life of the electronic device, destroy the battery, and/or distort certain plastic parts.
- DO NOT dispose of the unit in fire as they may explode or combust.
- DO NOT expose the unit to and/or use sharp objects on the Ear-phones as this will cause scratches and damage.
- DO NOT attempt to disassemble the unit. In the event that the unit does not function properly, return it to the store where it was purchased.



9 Warranty & Legal

The condition of this warranty and our responsibilities under this warranty are as follows: Supplier's warranty is non-transferable. This warranty is limited to the original purchaser only.

- You must be able to prove the date of original purchase of the unit with a dated receipt.
- The warranty is not applicable if the product has been subject to physical abuse, improper installation, modification or repair by unauthorized third party.
- The responsibility of supplier's products shall be limited to the repair or replacement of the product as its sole discretion.
- Specifically exempt from any warranty are limited-life consumable components subject to normal wear and tear such as batteries, earbuds and other accessories.
- A supplier will not take any responsibility if the failure of the unit has resulted from accident, abuse, misuse, or any unauthorized repair, modification or disassemble.
- Modification and repair of the unit should be done by authorized and qualified service personnel, Center or returned to the manufacturer.
- This warranty give you specific legal rights, and you may also have other rights which vary under local laws.



® The Bluetooth® word mark and logos are registered trademarks owned by Bluetooth SIG, Inc. and any use of such marks by Audeo Innovations Ltd. is under license. Other trademarks and trade names are those of their respective owners.



This appliance should not be put into the domestic garbage at the end of its useful life, but must be disposed of at a central point for recycling of electric and electronic domestic appliances.



This symbol on appliance, instruction manual and packaging puts your attention to this important issue. The materials used in this appliance can be recycled. By recycling used domestic appliances you contribute an important push to the protection of our environment. Ask your local authorities for information regarding the point of recollection.



Siri® is a trademark of Apple Inc., registered in the U.S. and other countries.
Google Assistant™ is a trademark of Google Inc.



Manufactured & Distributed by:

Audeeo Innovations Ltd., Chartwell House,
292-294 Hale Lane, London, UK, HA8 8NP

audeeo™ is a registered trademark of Audeeo Innovations Ltd.

MADE IN CHINA