

Original Article

## pH, Ion Release Capability, and Solubility Value of Premixed Mineral Trioxide Aggregates

Seolah Back<sup>1†</sup>, Yuji Jang<sup>1†</sup>, Junghwan Lee<sup>2,3,4,5</sup>, Joonhaeng Lee<sup>1</sup>, Jisun Shin<sup>1</sup>, Jongbin Kim<sup>1</sup>, Miran Han<sup>1</sup>, JongSoo Kim<sup>1</sup>

<sup>1</sup>Department of Pediatric Dentistry, <sup>2</sup>Department of Biomaterials Science, College of Dentistry, Dankook University, Cheonan, Republic of Korea

<sup>3</sup>Department of Nanobiomedical Science & BK21 PLUS NBM Global Research Center for Regenerative Medicine, Dankook University, Cheonan, Republic of Korea

<sup>4</sup>Institute of Tissue Regeneration Engineering (ITREN), Dankook University, Cheonan, Republic of Korea

<sup>5</sup>UCL Eastman-Korea Dental Medicine Innovation Centre, Dankook University, Cheonan, Republic of Korea

### Abstract

The current study aimed to compare the pH, solubility value, and ion release capability of premixed mineral trioxide aggregates (MTAs) versus conventional pulp capping materials before and after setting. The following materials were used: resin-modified calcium silicate cement (TheraCal LC<sup>®</sup>, TLC), resin-modified calcium hydroxide cement (Ultra-Blend<sup>™</sup> plus, UBP), and 2 kinds of premixed MTA (Endocem MTA<sup>®</sup> premixed regular [EMPR] and Well-Root<sup>™</sup> PT [WRP]). The specimens of each material were prepared before and after setting and were immersed in distilled water. The materials' pH and solubility value were assessed. Next, three kinds of ion (calcium, sulfide, and strontium) released by pulp capping materials were evaluated via inductively coupled plasma atomic emission spectrometry. In the after-setting group, the pH of TLC and UBP decreased. However, the pH of the premixed MTAs increased with time. TLC released a higher concentration of strontium ion compared with the other materials. Meanwhile, EMPR released a significantly high concentration of sulfide ion ( $p < 0.05$ ). In the after-setting group, the 2 kinds of premixed MTAs released a significantly higher concentration of calcium ion compared with the other materials ( $p < 0.05$ ). In the after-setting group, EMPR had a significantly low solubility value ( $p < 0.05$ ). The Kruskal-Wallis test, followed by the Mann-Whitney U test with Bonferroni correction, was used in statistical analysis. In conclusion, resin-modified calcium silicate cement, modified calcium hydroxide cement, and the 2 kinds of premixed MTAs had an alkaline pH and low solubility value and they released various concentrations of ions after setting. [J Korean Acad Pediatr Dent 2022;49(4):379-391]

### Keywords

Pulp capping materials, Premixed MTA, pH, Solubility, Ion release

### ORCID

Seolah Back

<https://orcid.org/0000-0003-1937-1250>

Yuji Jang

<https://orcid.org/0000-0003-1908-100X>

Junghwan Lee

<https://orcid.org/0000-0001-8678-5459>

Joonhaeng Lee

<https://orcid.org/0000-0002-3575-5476>

Jisun Shin

<https://orcid.org/0000-0003-2147-5163>

Jongbin Kim

<https://orcid.org/0000-0001-8744-9553>

Miran Han

<https://orcid.org/0000-0003-0312-6023>

JongSoo Kim

<https://orcid.org/0000-0001-8752-332X>

### Article history

Received June 10, 2022

Revised September 1, 2022

Accepted September 1, 2022

© 2022 Korean Academy of Pediatric Dentistry

© This is an Open Access article distributed under the terms of the Creative Commons Attribution Non-Commercial License (<http://creativecommons.org/licenses/by-nc/4.0>) which permits unrestricted non-commercial use, distribution, and reproduction in any medium, provided the original work is properly cited.

### Corresponding author: JongSoo Kim

Department of Pediatric Dentistry, College of Dentistry, Dankook University, 119, Dandae-ro, Dongnam-gu, Cheonan, 31116, Republic of Korea

Tel: +82-41-550-0223 / Fax: +82-41-550-0118 / E-mail: jskim@dku.edu

### Funding information

This research was funded by the Department of Dentistry (Pediatric dentistry) supported through the Research-Focused Department Promotion Project as a part of the University Innovation Support Program for Dankook University in 2021.

† Contributed equally to this work as first authors.

## Introduction

Root canal treatment of immature teeth with an open apical foramen is associated with a high fracture risk and stops root development. Vital pulp therapy maintains root development and initiates dentinogenesis for pulp protection[1]. In immature teeth with reversible pulpitis caused by caries or trauma, pulp therapy can suppress pulp inflammation and return the pulp to its normal state[2].

Calcium hydroxide, which releases hydroxide and calcium ions, has been the most widely accepted pulp capping material since the 1930s[3-5]. As calcium hydroxide dissolves over time and forms a necrotic layer at the pulp-material interface, failure of long-term biological sealing, which can prevent bacterial infection, commonly occurs[5-7].

Several studies have introduced the use of mineral trioxide aggregates (MTAs). Results showed that the properties of MTAs are superior to those of calcium hydroxide. That is, MTAs have a low cytotoxicity risk and solubility value and good tissue biocompatibility and can promote marginal adaptation and mineralized tissue formation[8-10]. However, these materials have several disadvantages. For example, they have a long setting time and are complicated to manipulate and associated with a risk of discoloration[8,11]. Inhomogeneous mixing may deteriorate the physicochemical properties of MTAs leading to prolonged treatment time[12-15].

To improve the handling characteristics of conventional MTAs have been developed, premixed type MTAs, which are a combination of calcium phosphate cement powders and a nonaqueous but water-miscible liquid. Premixed MTAs have several additives such as methylcellulose or glycerin, which is used as anti-washout ingredients, and calcium chloride or zirconium oxide, which is used as an accelerator. Therefore, they have better material cohesiveness and plasticity, thereby making them easier to handle and accelerating their setting time[16-19]. Ready-to-use cement pastes, such as Well-Root™ PT (WRP, Vericom Co., Chuncheon, Korea) and Endocem MTA® premixed regular (EMPR, Maruchi, Wonju, Korea),

have no risk of inhomogeneous mixing[14,15]. WRP comprises glycol and zirconium oxide, and EMPR consists of dimethyl sulfoxide, hydroxypropyl methylcellulose and zirconium oxide, which improve its physicochemical properties. Current studies on premixed MTAs are limited.

In clinical settings, resin-modified materials such as TheraCal LC® (TLC, Bisco Inc., Schaumburg, IL, USA) and Ultra-Blend™ plus (UBP, Ultradent Products Inc., South Jordan, UT) are often applied to deep cavities[20]. Incomplete curing can easily occur and can decrease physical properties and increase toxicity risk[21-25]. However, there are only few studies assessing these issues.

The physicochemical properties of pulp capping materials, such as pH, solubility value, and ion release capability, can affect pulpal response[26,27]. An acidic pH disrupts protein synthesis and proliferation of pulp cells[27,28]. Additionally, calcium ions play an important role in the differentiation of pulp cells into mineralized tissue forming cells[29,30]. Therefore, a high solubility can exacerbate pulp inflammation due to bacterial infection[4,5,31]. The current study aimed to compare the pH, solubility, and ion release capability of WRP and EMPR versus TLC and UBP before and after setting.

## Materials and Methods

### 1. Sample preparation

This study used 4 pulp capping materials (Table 1). All materials were evaluated before and after setting in all experimental procedures, and the setting was performed according to the manufacturer's instructions.

To measure pH and ion release with ICP-AES, 1 specimen of each variable was made for each group, where they were mixed and placed onto circular Teflon molds (inner diameter: 10.0 mm and height: 2.0 mm). To measure solubility value, 2 specimens were made for each group. Each specimen was mixed and placed in split-ring Teflon molds (inner diameter: 20.0 mm, height: 1.0 mm).

**Table 1.** Materials used in the current study.

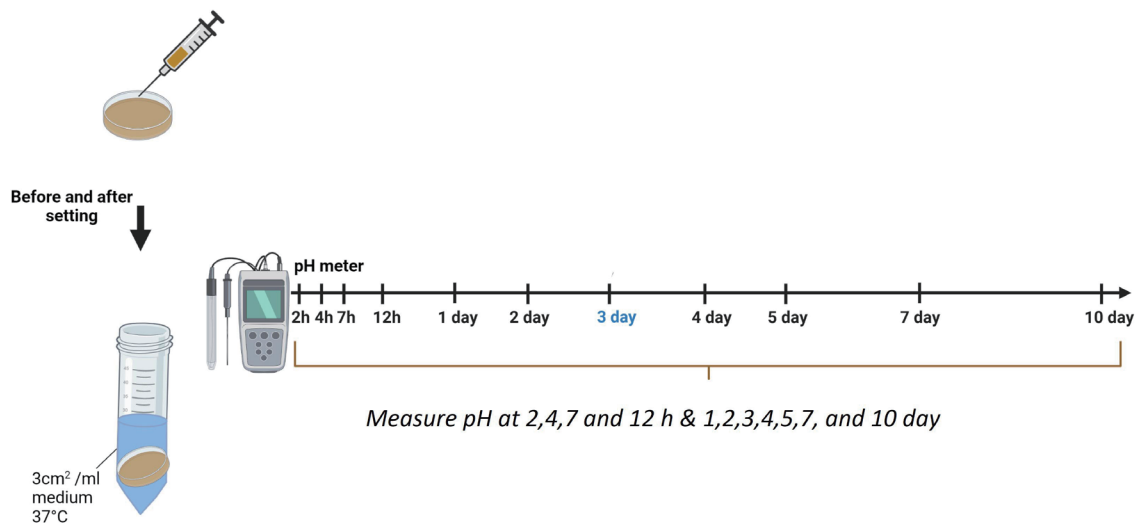
Category	Materials	Composition, details	Manufacturer	Setting time
Resin-modified calcium silicate cement	TheraCal LC®	Portland cement type III < 60% HEMA, polyethyleneglycol dimethacrylate < 50% Barium zirconate < 10%, Fumed Silica	Bisco Inc., Schaumburg, IL, the USA	Light polymerization for 20 s
Resin-modified calcium hydroxide cement	Ultra-Blend™ plus	5% Calcium hydroxide, 59% urethane dimethacrylate, 4% tricalcium salt Triethylene glycol dimethacrylate	Ultradent product Inc., Utah, the USA	Light polymerization for 20 s
	Well-Root™ PT	Calcium aluminosilicate compound, Zirconium oxide, Filler, Thickening agent	Vericom Co., Chuncheon, Korea	Initial: 7 min
Premixed MTA	Endocem MTA® premixed regular	Tricalcium silicate, Dodecacalcium hepta-aluminate, dimethyl sulfoxide, hydroxypropyl methylcellulose, calcium sulfate, zirconium oxide, lithium carbonate, silicon dioxide	Maruchi, Wonju, Korea	Initial: 4 - 5 min Final: 12 h

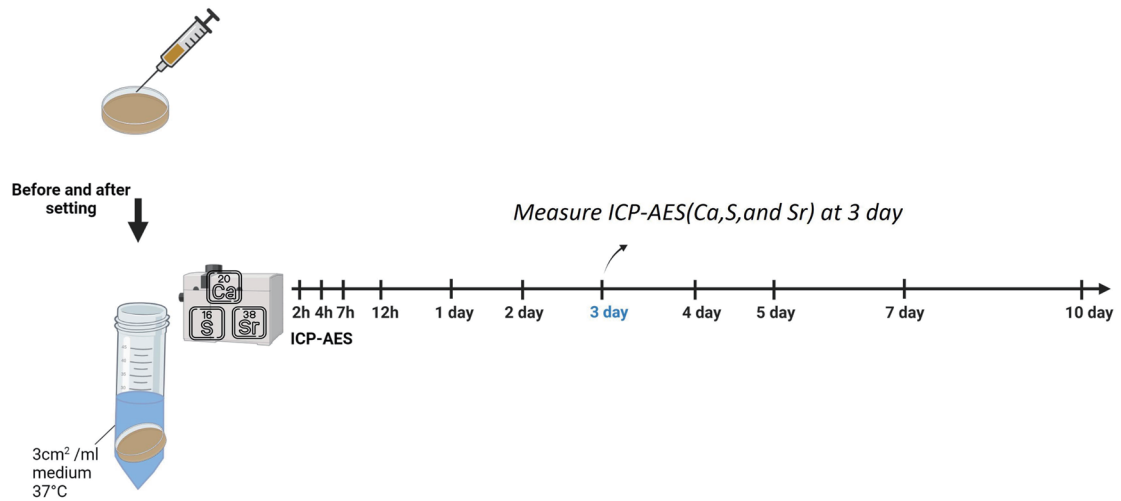
## 2. pH

Each sample was placed into a separate tube containing 5.0 mL of distilled water. The samples were stored at 37°C. pH was measured after incubation for 2, 4, 7, and 12 h and for 1, 2, 3, 4, 5, 7, and 10 days using a pH meter (inoLab pH 7110, WTW, Weilheim, Germany), which was previously calibrated with pH 10.0, 7.0, and 4.01 solutions. The electrode was washed with distilled water between each measurement and was blot dried. Each sample was measured 5 times and the mean value was recorded (Fig. 1).

## 3. Ion release with inductively coupled plasma atomic emission spectrometry

The release of calcium, sulfide, strontium ions was evaluated using the extract with ion release with inductively coupled plasma atomic emission spectrometry (ICP-AES) (Optima 4300DV, Perkin-Elmer, Waltham, MA, USA), according to a previous protocol[32]. Each sample was evaluated thrice, and the mean value was recorded (Fig. 2).

**Fig. 1.** Schematic figure of pH measurement (number of specimens = 1).



**Fig. 2.** Schematic figure of inductively coupled plasma atomic emission spectrometry (ICP-AES) (number of specimens = 1).

#### 4. Solubility value

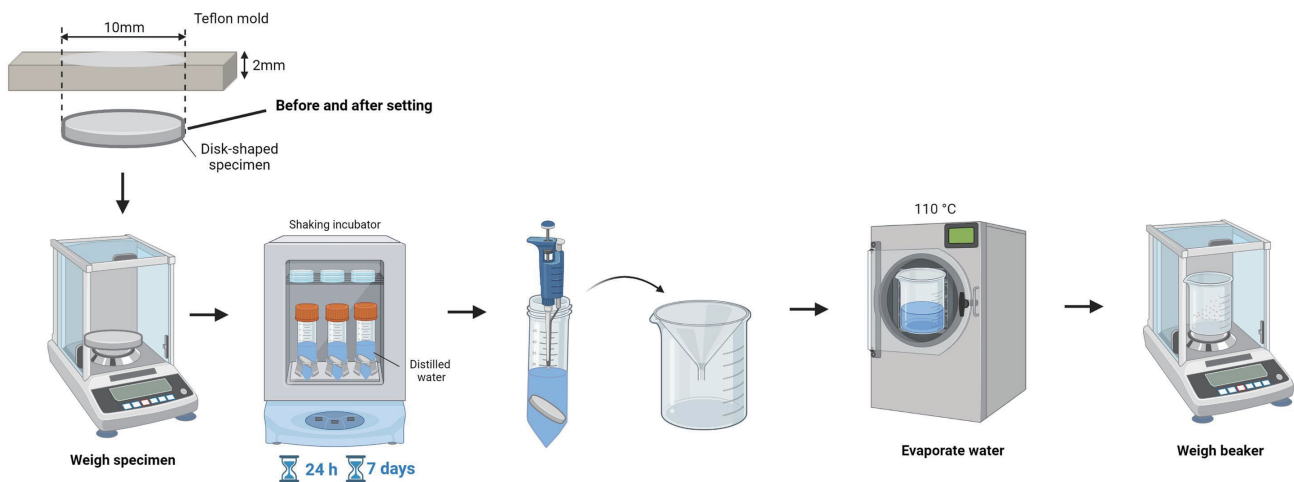
The solubility tests were modified based on the standard ISO 6876[33]. The filled molds were stored in an incubator with a temperature of 37°C and a relative humidity of 100% for 24 hours. The specimens were removed from the molds, and the net weight was evaluated thrice. Then, the average reading was recorded to the nearest 0.001 g with a precision scale. The 2 specimens were immersed in 50 mL of distilled water in the shallow dish for the entire surface of the specimen to allow contact with the distilled water. After 24 hours, the specimens were removed from the dish, and eluted distilled water was

poured into a funnel in a beaker. The water was evaporated without boiling and dried in an oven at 110°C. The differences between the specimen’s weight and the beaker’s original weight were divided by the initial weight of the specimen and were multiplied by 100. The result was considered as the solubility.

The solubility test was repeated thrice and conducted again at 1 week using the same method (Fig. 3).

#### 5. Statistical analysis

All data from the repeated tests were presented as mean ± standard deviation. Data were analyzed using



**Fig. 3.** Schematic figure of the solubility test (number of specimens = 2).

the Kruskal-Wallis test and the Mann-Whitney U test with Bonferroni correction using the Statistical Package for Social Sciences software version 21.0 (SPSS Inc., Chicago, USA).

## Results

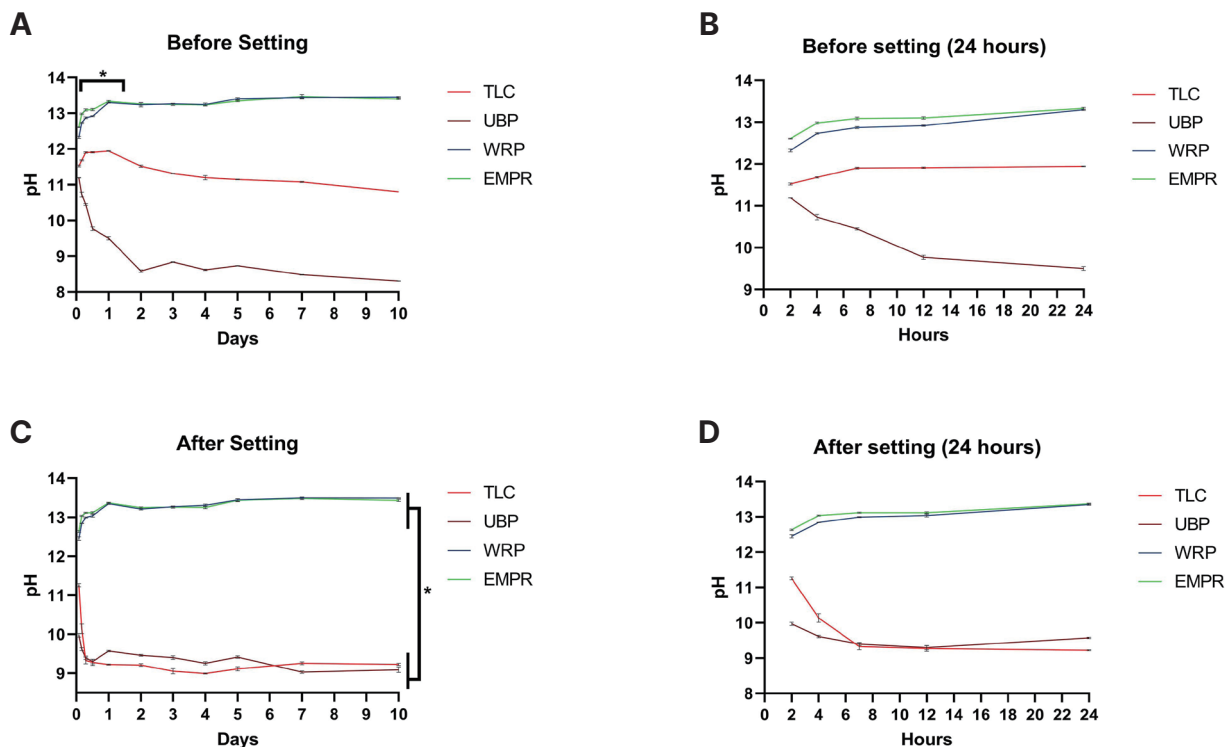
### 1. pH

Fig. 4 shows the pH of the test materials at different time points. WRP and EMPR had significantly higher pH values than TLC and UBP in all measurement periods ( $p < 0.05$ ). In the after-setting group, the pH of WRP and EMPR significantly increased over time until after 1 day and then became constant. Moreover, the pH of TLC and UBP significantly decreased over time until 12 hours and became constant ( $p < 0.05$ ).

WRP and EMPR had similar patterns before and after setting. However, the pH of TLC and UBP changed irregularly before setting. All materials had an alkaline pH at all periods.

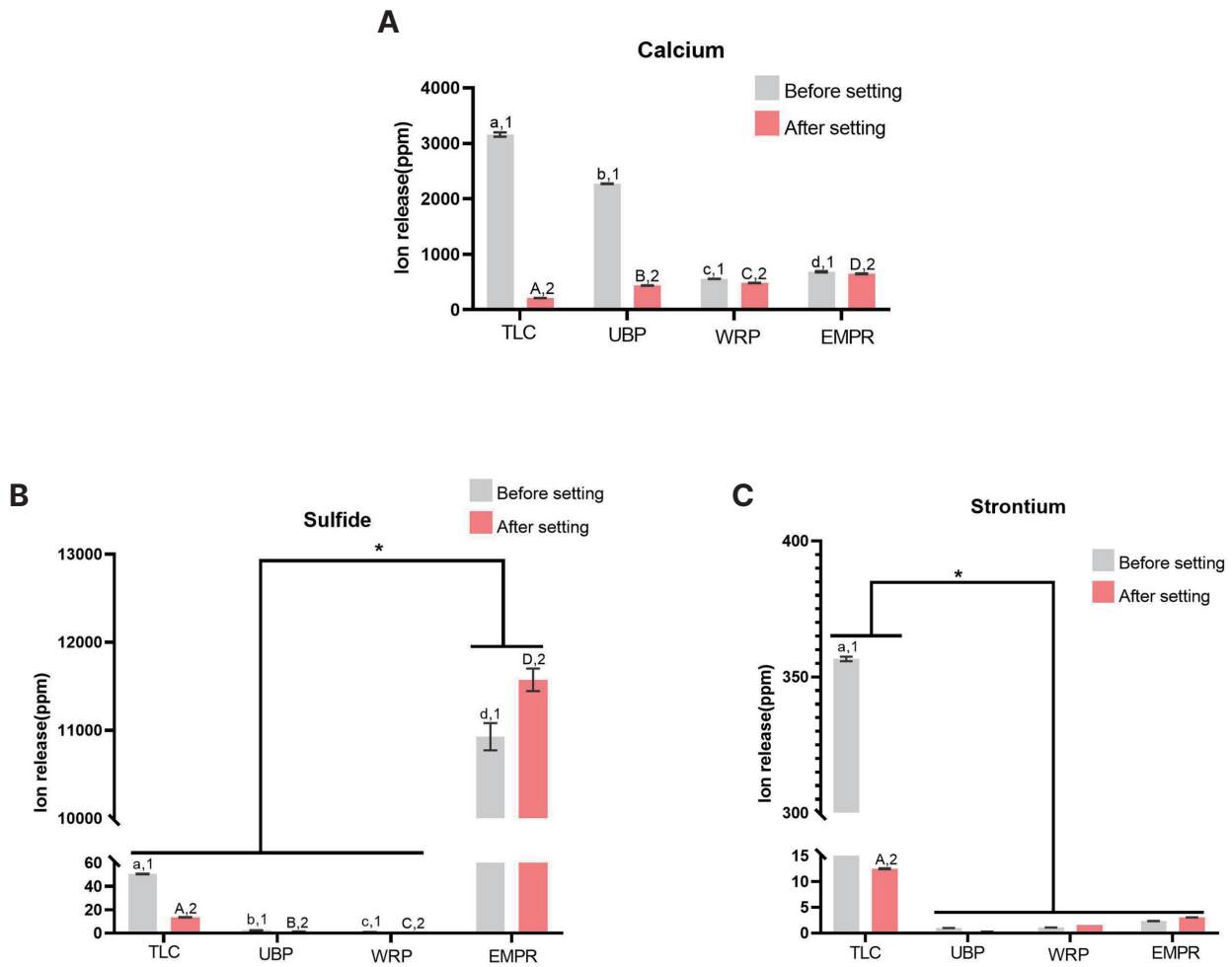
### 2. Ion release

Fig. 5 and Table 2 depict the concentration of ion released assessed via ICP-AES. TLC released a significantly higher concentration of ion before setting than after setting ( $p < 0.05$ ). Results showed that in the after setting group, WRP and EMPR released a significantly higher concentration of calcium ions compared with TLC and UBP ( $p < 0.05$ ). EMPR released the highest concentration of sulfide ions before and after setting ( $p < 0.05$ ). Small concentrations of strontium ions were detected in all materials except TLC.



**Fig. 4.** Mean pH values after 2, 4, 7 and 12 h and 1, 2, 3, 5, 7, and 10 days of exposition to all tested dental capping materials ( $n = 5$ ). (A) pH of the before setting group, (B) pH of the after setting group, (C) pH of the before setting group within a day, (D) pH of the after setting group within a day. Asterisks (\*) indicate statistically significant differences between the 2 resin-modified materials and 2 premixed MTAs ( $p < 0.05$ ).

TLC = TheraCal LC®, UBP = Ultra-Blend™ plus, WRP = Well-Root™ PT, EMPR = Endocem MTA® premixed regular,  $n$  = number of measurements.



**Fig. 5.** Mean concentration of ions released after 3 days of exposition to all tested dental capping materials. The lowercase letters indicate statistically significant differences ( $p < 0.05$ ) between the before setting groups. The different uppercase letters indicate statistically significant differences between the after setting groups ( $p < 0.05$ ) ( $n = 3$ ). (A) Calcium ion, (B) Sulfide ion. Asterisks (\*) indicate statistically significant differences between Endocem MTA premixed regular and the other materials, (C) Strontium ion. Asterisks (\*) indicate statistically significant differences between TLC and other materials.

TLC = TheraCal LC<sup>®</sup>, UBP = Ultra-Blend<sup>™</sup> plus, WRP = Well-Root<sup>™</sup> PT, EMPR = Endocem MTA<sup>®</sup> premixed regular,  $n =$  number of measurements.

**Table 2.** Ion values at different time periods ( $n = 3$ )

	TLC (before setting)	TLC (after setting)	UBP (before setting)	UBP (after setting)	WRP (before setting)	WRP (after setting)	EMPR (before setting)	EMPR (after setting)
Calcium	3158.56 ± 37.90 <sup>a,1</sup>	210.07 ± 2.80 <sup>A,2</sup>	2271.45 ± 4.96 <sup>b,1</sup>	480.45 ± 1.79 <sup>B,2</sup>	557.78 ± 3.23 <sup>c,1</sup>	446.81 ± 3.53 <sup>C,2</sup>	685.87 ± 11.85 <sup>d,1</sup>	647.89 ± 7.70 <sup>D,2</sup>
Sulfide	50.53 ± 0.32 <sup>a,1</sup>	13.50 ± 0.18 <sup>A,2</sup>	2.46 ± 0.04 <sup>b,1</sup>	1.37 ± 0.02 <sup>B,2</sup>	0.85 ± 0.08 <sup>c,1</sup>	0.53 ± 0.07 <sup>C,2</sup>	10927.6 ± 155.09 <sup>d,1</sup>	11573.66 ± 127.64 <sup>D,2</sup>
Strontium	356.63 ± 0.86 <sup>a,1</sup>	12.50 ± 0.10 <sup>A,2</sup>	1.00 ± 0.01 <sup>b,1</sup>	0.27 ± 0.00 <sup>B,2</sup>	1.10 ± 0.00 <sup>c,1</sup>	1.58 ± 0.01 <sup>C,2</sup>	2.34 ± 0.03 <sup>d,1</sup>	3.03 ± 0.03 <sup>D,2</sup>

a,b,c: Same superscript letters indicate non significantly different between the before setting groups.

A,B,C,D: Same superscript letters indicate non significantly different between the after setting groups.

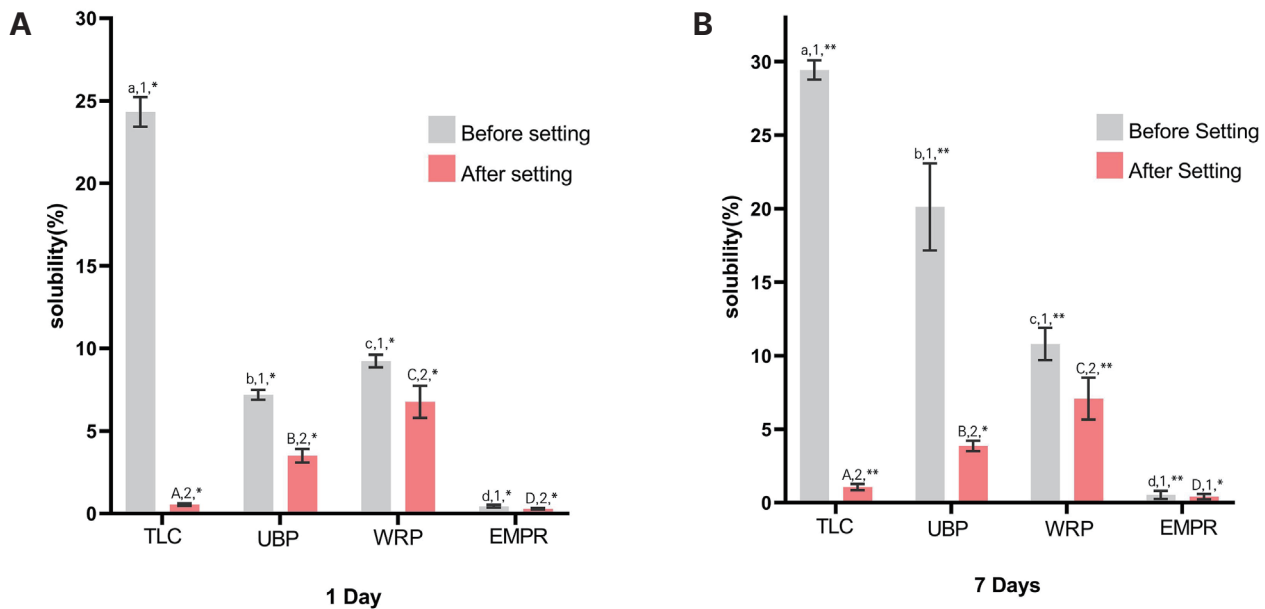
1,2: Same superscript letters indicate non significantly different between each material before and after setting.

TLC = TheraCal LC<sup>®</sup>, UBP = Ultra-Blend<sup>™</sup> plus, WRP = Well-Root<sup>™</sup> PT, EMPR = Endocem MTA<sup>®</sup> premixed regular,  $n =$  number of measurements, The data are shown as mean ± SD values of three samples.

### 3. Solubility

Fig. 6 and Table 3 show the solubility test results after 24 hours and 1 week. Before setting, TLC had the highest mean solubility value after 1 and 7 days ( $p < 0.05$ ). Before and after setting, EMPR had the lowest mean solubility value after 1 and 7 days ( $p < 0.05$ ). The solubility value

was significantly higher before setting than after setting in all groups ( $p < 0.05$ ). In particular, TLC and UBP had significant differences in solubility value before and after setting ( $p < 0.05$ ). After setting, the solubility values of all materials except UBP and EMPR after 7 days was significantly higher than those after 1 day ( $p < 0.05$ ).



**Fig. 6.** Mean solubility values of all tested dental capping materials after 1 and 7 days of exposition. The lowercase letters indicate statistically significant differences ( $p < 0.05$ ) between the before setting groups. The uppercase letters indicate statistically significant differences between the after setting group ( $p < 0.05$ ). The other numbers indicate statistically significant differences ( $p < 0.05$ ) between each material before and after setting. Asterisks (\*) shows statistically significant differences ( $p < 0.05$ ) after 1 and 7 days ( $n = 3$ ). (A) After 1 day, (B) After 7 days.

TLC = TheraCal LC®, UBP = Ultra-Blend™ plus, WRP = Well-Root™ PT, EMPR = Endocem MTA® premixed regular,  $n$  = number of measurements.

**Table 3.** Solubility values at different time periods ( $n = 3$ )

	TLC (before setting)	TLC (after setting)	UBP (before setting)	UBP (after setting)	WRP (before setting)	WRP (after setting)	EMPR (before setting)	EMPR (after setting)
24 h	24.32 ± 0.90 <sup>a,1,*</sup>	0.54 ± 0.08 <sup>A,2,*</sup>	7.19 ± 0.30 <sup>b,1,*</sup>	3.50 ± 0.41 <sup>B,2,*</sup>	9.23 ± 0.38 <sup>c,1,*</sup>	6.76 ± 0.97 <sup>C,2,*</sup>	0.44 ± 0.08 <sup>d,1,*</sup>	0.28 ± 0.05 <sup>D,2,*</sup>
1 week	29.44 ± 0.65 <sup>a,1,**</sup>	1.06 ± 0.22 <sup>A,2,**</sup>	20.12 ± 2.96 <sup>b,1,**</sup>	3.86 ± 0.36 <sup>B,2,*</sup>	10.79 ± 1.09 <sup>c,1,**</sup>	7.09 ± 1.43 <sup>C,2,**</sup>	0.54 ± 0.27 <sup>d,1,**</sup>	0.41 ± 0.18 <sup>D,1,*</sup>

a,b,c: Same superscript letters indicate non significantly different between the before setting groups.

A,B,C,D: Same superscript letters indicate non significantly different between the after setting groups.

1,2: Same superscript letters indicate non significantly different between each material before and after setting.

\*,\*\*: Same number of asterisks indicates non significantly different between 24 hours and 1 week.

TLC = TheraCal LC®, UBP = Ultra-Blend™ plus, WRP = Well-Root™ PT, EMPR = Endocem MTA® premixed regular,  $n$  = number of measurements, The data are shown as mean ± SD values of three samples.

## Discussion

Pulp capping materials play an essential role in successfully regenerating the dentin-pulp complex[34,35]. For a successful vital pulp treatment, these materials should have the following properties: (1) antibacterial activity (2) good biocompatibility (3) calcium ion releasing ability and (4) pulp cell damage to initiate immune process[36-38]. Several pulp capping materials including premixed MTAs, which can overcome the limitations of MTA, have been developed. Several studies have assessed the chemical properties of existing pulp capping materials after setting[31,38-41]. Some have compared premixed type and conventional MTAs. Results showed that premixed type MTAs have a higher calcium release capability and pH than conventional MTAs[42-44]. However, premixed type and conventional materials have similar cytotoxic risks and antimicrobial properties[45]. To the best of our knowledge, there are no previous studies comparing the 4 types of pulp capping materials before and after setting, and only few have assessed premixed MTAs. In this study, the chemical properties of 4 types of pulp capping materials were compared before and after setting to determine the properties of premixed MTAs and to assess the risk of toxicity in an incomplete setting.

In this report, all 4 materials had an alkaline pH after setting, and an alkaline pH has antibacterial activities and mineralization effects[6,27,46-48]. The pH of EMPR and WRP increased over time before and after setting. In particular, the pH increased evidently after 24 hours. This result is in accordance with that of previous studies about MTA[26,39,40,49]. According to Gandolfi et al. and Santos et al.[39,48], the effect of the hydroxyl group is released via the hydration of calcium silicate particles during setting. Moreover, after setting, the pH of resin-modified materials decreased over time, with a significant reduction within 12 hours. According to Yamamoto et al.[50], the resin matrix of TLC inhibits ion exchange and the hydration of calcium silicate components.

Previous studies have found that calcium, sulfide, and strontium ions at appropriate concentrations have

antibacterial effects and can promote cell differentiation[51-54]. In particular, calcium ions are essential for the differentiation and mineralization of pulp cells and for the regulation of pulp calcification[30,38,55]. These ions are more likely to be detected in premixed MTAs after setting. This outcome is expected because calcium ions are released via the hydration of calcium silicate particles such as hydroxide ions[39,48]. EMPR contains calcium sulfate and dimethyl sulfoxide. Hence, it releases a high concentration of sulfide ion before and after setting. Moreover, it can have a high antibacterial effect. Relatively high concentrations of strontium ions were detected in a TLC before setting, which is attributed to the matrix of TLC containing strontium.

High solubility leads to loss of pulp capping materials and bacterial infection, which result in permanent sealing failure[5,41]. Low solubility is essential for pulp capping materials[2,31]. Previous studies have reported that EMPR has a high washout resistance and high mechanical strength because of its anti-washout ingredients such as hydroxypropyl methylcellulose and dimethyl sulfoxide[16,40,56]. This is consistent with the low solubility of EMPR in this experiment. The solubility value of WRP is relatively high, not because it has low washout resistance, but because it uses polyethylene and polypropylene glycols as solvents. According to ISO 6876[33], the solubility test is performed by drying water, and glycol that is not completely dried remains. Moreover, solubility data can be overestimated because, in the presence of biological fluids, the dissolution of water-soluble components and its associated weight loss are lower than distilled water and calcium phosphate deposition on the surface and inside of the tooth[38,41,57].

Moreover, resin-modified materials, particularly in TLC, had an irregular pH over time and a higher concentration of ion released and solubility value before setting than after setting. Additionally, there were similar differences in the pH of WRP and EMPR before and after setting. This result might be attributed to the fact that premixed MTAs can be set with moisture over time. Further, the resin-modified materials can be developed via photopolymerization. Hence, unpolymerized resin monomers



may remain in resin-modified materials before setting.

WRP and EMPR had a higher pH and concentration of calcium ions released than TLC and UBP. In particular, EMPR released a high concentration of sulfide ions, and it had a low solubility value. In addition, in resin-modified materials, adequate light curing is important.

Based on the study results, WRP and EMPR are suitable pulp capping materials. However, this study had several limitations. First, the experiment was conducted in vitro, and no direct comparisons of pulp toxicity were performed. Second, the number of specimens was insufficient. Third, further studies should be performed to identify the interaction among pH, ion concentration, and solubility value. Finally, other chemical-mechanical tests, which can be used to evaluate cytotoxicity, water sorption, setting time, compressive strength, and radiopacity, should be conducted.

## Conclusion

Recently, premixed MTAs have been developed. In this study, all materials had an alkaline pH and a low solubility value and could release various concentrations of ions. WRP and EMPR had a high pH, and their pH increases with time. Moreover, the concentration of calcium ions was evaluated. EMPR released a large concentration of sulfide ion and it had a low solubility value.

Resin-modified materials are commonly applied to deep cavities and incomplete curing can easily occur. Before setting, TLC and UBP had an extremely high ion release and solubility value, and their pH was extremely irregular. Curing should be performed accurately according to the manufacturer's instructions.

## Acknowledgments

This study was supported through the Research-Focused Department Promotion Project as a part of the University Innovation Support Program for Dankook University in 2021.

## Conflicts of Interest

The authors have no potential conflicts of interest to disclose.

## References

1. Stanley HR : Pulp capping: conserving the dental pulp - can it be done? Is it worth it? *Oral Surg Oral Med Oral Pathol*, 68:628-639, 1989.
2. Dammaschke T, Galler K, Krastl G : Current recommendations for vital pulp treatment. *Dtsch Zahnärztl Z Int*, 1:43-52, 2019.
3. Dammaschke T : The history of direct pulp capping. *J Hist Dent*, 56:9-23, 2008.
4. Hørsted-Bindslev P, Løvschall H : Treatment outcome of vital pulp treatment. *Endod Topics*, 2:24-34, 2002.
5. Desai S, Chandler N : Calcium hydroxide-based root canal sealers: a review. *J Endod*, 35:475-480, 2009.
6. Mohammadi Z, Dummer PMH : Properties and applications of calcium hydroxide in endodontics and dental traumatology. *Int Endod J*, 44:697-730, 2011.
7. Komabayashi T, Zhu Q, Eberhart R, Imai Y : Current status of direct pulp-capping materials for permanent teeth. *Dent Mater J*, 35:1-12, 2016.
8. Parirokh M, Torabinejad M : Mineral trioxide aggregate: a comprehensive literature review - part III: clinical applications, drawbacks, and mechanism of action. *J Endod*, 36:400-413, 2010.
9. Vivian RR, Zapata RO, Zeferino MA, Bramante CM, Bernardineli N, Garcia RB, Duarte MAH, Filho MT, de Moraes IG : Evaluation of the physical and chemical properties of two commercial and three experimental root-end filling materials. *Oral Surg Oral Med Oral Pathol Oral Radiol Endod*, 110:250-256, 2010.
10. Torabinejad M, Ford TRP, McKendry DJ, Abedi HR, Miller DA, Kariyawasam SP : Histologic assessment of mineral trioxide aggregate as a root-end filling in monkeys. *J Endod*, 23:225-228, 1997.
11. Torabinejad M, Parirokh M : Mineral trioxide aggregate: a comprehensive literature review - part II: leakage and biocompatibility investigations. *J Endod*, 36:

- 190-202, 2010.
12. Xu HHK, Carey LE, Simon Jr. CG, Takagi S, Chow LC : Premixed calcium phosphate cements: synthesis, physical properties, and cell cytotoxicity. *Dent Mater*, 23:433-441, 2007.
  13. Carey LE, Xu HHK, Simon Jr. CG, Takagi S, Chow LC : Premixed rapid-setting calcium phosphate composites for bone repair. *Biomaterials*, 26:5002-5014, 2005.
  14. Wu M, Wang T, Zhang Y : Premixed tricalcium silicate/sodium phosphate dibasic cements for root canal filling. *Mater Chem Phys*, 257:123682, 2021.
  15. Takagi S, Chow LC, Hirayama S, Sugawara A : Premixed calcium-phosphate cement pastes. *J Biomed Mater Res B Appl Biomater*, 67:689-696, 2003.
  16. Han L, Kodama S, Okiji T : Evaluation of calcium-releasing and apatite-forming abilities of fast-setting calcium silicate-modified endodontic materials. *Int Endod J*, 48:124-130, 2015.
  17. Ber BS, Hatton JF, Stewart GP : Chemical modification of ProRoot MTA to improve handling characteristics and decrease setting time. *J Endod*, 33:1231-1234, 2007.
  18. Abu-Nawareg M, Zidan A : Modification of Portland Cement Properties using Glycerin. *Int J Health Sci Res*, 10:168-178, 2020.
  19. Nazari A, Riahi S : The effects of ZrO<sub>2</sub> nanoparticles on physical and mechanical properties of high strength self compacting concrete. *Mater Res*, 13:551-556, 2010.
  20. Giachetti L, Russo DS, Bertini F, Giuliani V : Translucent fiber post cementation using a light-curing adhesive/composite system: SEM analysis and pull-out test. *J Dent*, 32:629-634, 2004.
  21. Prasad M, Mohamed S, Nayak K, Shetty SK, Talapaneni AK : Effect of moisture, saliva, and blood contamination on the shear bond strength of brackets bonded with a conventional bonding system and self-etched bonding system. *J Nat Sci Biol Med*, 5:123-129, 2014.
  22. Moharamzadeh K, Van Noort R, Brook IM, Scutt AM : Cytotoxicity of resin monomers on human gingival fibroblasts and HaCaT keratinocytes. *Dent Mater*, 23:40-44, 2007.
  23. Goon AT, Isaksson M, Zimerson E, Goh CL, Bruze M : Contact allergy to (meth) acrylates in the dental series in southern Sweden: simultaneous positive patch test reaction patterns and possible screening allergens. *Contact Dermatitis*, 55:219-226, 2006.
  24. Lee MJ, Kim MJ, Kwon JS, Lee SB, Kim KM : Cytotoxicity of light-cured dental materials according to different sample preparation methods. *Materials (Basel)*, 10:288, 2017.
  25. Shortall AC, Harrington E, Wilson HJ : Light curing unit effectiveness assessed by dental radiometers. *J Dent*, 23:227-232, 1995.
  26. Hamdy M, Fayyad DM, Eldaharawy MH, Hegazy E : Physical properties of different Pulp Capping Materials and Histological Analysis of their effect on Dogs' Dental Pulp Tissue Healing. *Egypt Dent J*, 64:2657-2667, 2018.
  27. Hirose Y, Yamaguchi M, Kawabata S, Murakami M, Nakashima M, Gotoh M, Yamamoto T : Effects of extracellular pH on dental pulp cells in vitro. *J Endod*, 42:735-741, 2016.
  28. Lucas CA, Gillies RJ, Olson JE, Giuliano KA, Martinez R, Sneider JM : Intracellular acidification inhibits the proliferative response in BALB/c-3T3 cells. *J Cell Physiol*, 136:161-167, 1988.
  29. Mizuno M, Banzai Y : Calcium ion release from calcium hydroxide stimulated fibronectin gene expression in dental pulp cells and the differentiation of dental pulp cells to mineralized tissue forming cells by fibronectin. *Int Endod J*, 41:933-938, 2008.
  30. Rashid F, Shiba H, Mizuno N, Mouri Y, Fujita T, Shinohara H, Ogawa T, Kawaguchi H, Kurihara H : The effect of extracellular calcium ion on gene expression of bone-related proteins in human pulp cells. *J Endod*, 29:104-107, 2003.
  31. Poggio C, Lombardini M, Colombo M, Beltrami R, Rindi S : Solubility and pH of direct pulp capping materials: a comparative study. *J Appl Biomater Func Mater*, 13:E181-E185, 2015.
  32. El-Fiqi A, Lee JH, Lee EJ, Kim HW : Collagen hydrogels incorporated with surface-aminated mesoporous nanobioactive glass: improvement of physicochemi-

- cal stability and mechanical properties is effective for hard tissue engineering. *Acta Biomater*, 9:9508-9521, 2013.
33. International Organization for Standardization : ISO 6876:2012 Dentistry - Root canal sealing materials. Available from URL: <https://www.iso.org/standard/45117.html> (Accessed on July 21, 2020).
  34. Bae WJ, Min KS, Kim JJ, Kim JJ, Kim HW, Kim EC : Odontogenic responses of human dental pulp cells to collagen/nanobioactive glass nanocomposites. *Dent Mater*, 28:1271-1279, 2012.
  35. Jun SK, Lee JH, Lee HH : The biomineralization of a bioactive glass-incorporated light-curable pulp capping material using human dental pulp stem cells. *Biomed Res Int*, 2017:2495282, 2017.
  36. Narita H, Itoh S, Imazato S, Yoshitake F, Ebisu S : An explanation of the mineralization mechanism in osteoblasts induced by calcium hydroxide. *Acta Biomater*, 6:586-590, 2010.
  37. Cooper PR, Takahashi Y, Graham LW, Simon S, Imazato S, Smith AJ : Inflammation-regeneration interplay in the dentine-pulp complex. *J Dent*, 38:687-697, 2010.
  38. Gandolfi MG, Siboni F, Polimeni A, Bossù M, Riccitiello F, Rengo S, Prati C : In vitro screening of the apatite-forming ability, biointeractivity and physical properties of a tricalcium silicate material for endodontics and restorative dentistry. *Dent J*, 1:41-60, 2013.
  39. Santos AD, Moraes JCS, Araújo EB, Yukimitu K, Filho WV : Physico-chemical properties of MTA and a novel experimental cement. *Int Endod J*, 38:443-447, 2005.
  40. Kang TY, Choi JW, Kim KM, Kwon JS : Mechanical and physico-chemical properties of premixed-MTA in contact with three different types of solutions. *Korean J Dent Mater*, 48:281-292, 2021.
  41. Gandolfi MG, Siboni F, Prati C : Chemical-physical properties of TheraCal, a novel light-curable MTA-like material for pulp capping. *Int Endod J*, 45:571-579, 2012.
  42. Khalil I, Naaman A, Camilleri J : Investigation of a novel mechanically mixed mineral trioxide aggregate (MM-MTA™). *Int Endod J*, 48:757-767, 2015.
  43. Margunato S, Taşlı PN, Aydın S, Kazandağ MK, Şahin F : In vitro evaluation of ProRoot MTA, Biodentine, and MM-MTA on human alveolar bone marrow stem cells in terms of biocompatibility and mineralization. *J Endod*, 41:1646-1652, 2015.
  44. Damas BA, Wheeler MA, Bringas JS, Hoen MM : Cytotoxicity comparison of mineral trioxide aggregates and EndoSequence bioceramic root repair materials. *J Endod*, 37:372-375, 2011.
  45. Lovato KF, Sedgley CM : Antibacterial activity of endosequence root repair material and proroot MTA against clinical isolates of *Enterococcus faecalis*. *J Endod*, 37:1542-1546, 2011.
  46. Estrela C, Sydney GB, Bammann LL, Felipe Júnior O : Mechanism of the action of calcium and hydroxyl ions of calcium hydroxide on tissue and bacteria. *Braz Dent J*, 6:85-90, 1995.
  47. Luczaj-Cepowicz E, Marczuk-Kolada G, Pawinska M, Obidzinska M, Holownia A : Evaluation of cytotoxicity and pH changes generated by various dental pulp capping materials - an in vitro study. *Folia Histochem Cytobiol*, 55:86-93, 2017.
  48. Gandolfi MG, Taddei P, Modena E, Siboni F, Prati C : Biointeractivity-related versus chemi/physorption-related apatite precursor-forming ability of current root end filling materials. *J Biomed Mater Res B Appl Biomater*, 101:1107-1123, 2013.
  49. Duarte MAH, de Oliveira Demarchi ACC, Yamashita JC, Kuga MC, de Campos Fraga S : pH and calcium ion release of 2 root-end filling materials. *Oral Surg Oral Med Oral Pathol Oral Radiol Endod*, 95:345-347, 2003.
  50. Yamamoto S, Han L, Noiri Y, Okiji T : Evaluation of the Ca ion release, pH and surface apatite formation of a prototype tricalcium silicate cement. *Int Endod J*, 50(Suppl 2):E73-E82, 2017.
  51. Weld JT, Gunther A : The antibacterial properties of sulfur. *J Exp Med*, 85:531-542, 1947.
  52. Choudhury SR, Roy S, Goswami A, Basu S : Polyethylene glycol-stabilized sulphur nanoparticles: an ef-

- fective antimicrobial agent against multidrug-resistant bacteria. *J Antimicrob Chemother*, 67:1134-1137, 2012.
53. Canalis E, Hott M, Deloffre P, Tsouderos Y, Marie PJ : The divalent strontium salt S12911 enhances bone cell replication and bone formation in vitro. *Bone*, 18: 517-523, 1996.
54. Buehler J, Chappuis P, Saffar JL, Tsouderos Y, Vignery A : Strontium ranelate inhibits bone resorption while maintaining bone formation in alveolar bone in monkeys (*Macaca fascicularis*). *Bone*, 29:176-179, 2001.
55. Schröder U : Effects of calcium hydroxide-containing pulp-capping agents on pulp cell migration, proliferation, and differentiation. *J Dent Res*, 64:541-548, 1985.
56. Choi Y, Park SJ, Lee SH, Hwang YC, Yu MK, Min KS : Biological effects and washout resistance of a newly developed fast-setting pozzolan cement. *J Endod*, 39: 467-472, 2013.
57. Nekoofar MH, Adusei G, Sheykhrezae MS, Hayes SJ, Bryant ST, Dummer PMH : The effect of condensation pressure on selected physical properties of mineral trioxide aggregate. *Int Endod J*, 40:453-461, 2007.

## Premixed MTA제재의 pH, 이온 유리 정도, 용해도

백설아<sup>†</sup> · 장유지<sup>†</sup> · 이정환<sup>2,3,4,5</sup> · 이준행<sup>1</sup> · 신지선<sup>1</sup> · 김종빈<sup>1</sup> · 한미란<sup>1</sup> · 김종수<sup>1</sup>

단국대학교 치과대학<sup>1</sup> 소아치과학교실, <sup>2</sup>생체재료학교실

<sup>3</sup>단국대학교 나노바이오의학과 BK21 plus 재생의학 글로벌리서치센터

<sup>4</sup>단국대학교 조직재생공학연구소

<sup>5</sup>단국대학교 UCL 이스트만-코리아 덴탈메디슨 혁신센터

이 연구는 premixed MTA 제재와 기존 치수복조제의 경화 전, 후의 pH 값 그리고 칼슘, 황, 스트론튬 이온의 유리량, 용해도를 비교했다. 사용된 재료는 다음과 같다: 레진 강화형 칼슘실리케이트(TheraCal LC®; TLC), 레진 강화형 수산화칼슘(UBP, UltraBlend™ plus), 2종류의 premixed MTA(Endocem MTA® premixed regular (EMPR) and Well-Root™ PT (WRP)). 각 재료의 시편은 경화 전, 경화 후 2군으로 나누어 준비한 뒤 증류수에 보관하였다. pH, 용해도를 측정하였으며 ICP-AES를 이용한 칼슘, 황, 스트론튬의 3가지 이온 유리량을 측정하였다. 경화 후 군에서 TLC와 UBP의 pH 값은 감소했다. 그러나 premixed MTA 재료의 pH 값은 증가했다. TLC는 다른 재료와 비교하여 스트론튬 이온 유리량이 더 많았다. 동시에 EMPR에서 황이온 유리량이 높았다( $p < 0.05$ ). 경화 후 군에서 칼슘 이온 방출은 두 종류의 premixed MTA에서 더 높았다( $p < 0.05$ ). 경화 후 군에서 용해도는 Kruskal-Wallis 서 test를 이용하여 통계분석하였고 Mann-Whitney U test를 이용하여 사후검정하였다. 결론적으로 레진 강화형 칼슘 실리케이트 시멘트, 레진 강화형 수산화칼슘 시멘트, 2종류의 premixed MTAs 모두 경화 후 알칼리성 pH 값과 낮은 용해도를 가지고 있었으며 다양한 이온을 유리했다. [J Korean Acad Pediatr Dent 2022;49(4):379-391]

원고접수일 2022년 6월 10일  
원고최종수정일 2022년 9월 1일  
원고채택일 2022년 9월 1일

© 2022 대한소아치과학회  
© 이 글은 크리에이티브 커먼즈 코리아 저작자표시-비영리 4.0 대한민국 라이선스에 따라 이용하실 수 있습니다.

교신저자 김종수

(31116) 천안시 동남구 단대로 119 단국대학교 치과대학 소아치과학교실  
Tel: 041-550-0223 / Fax: 041-550-0118 / E-mail: jskim@dku.edu

† 이 논문에 제1저자로 동일한 기여를 하였음.