

Eco-leather

Leather

Technical information

GROUP	UPHOLSTERY	COMPOSITION	ABRASION RESISTANCE	FLAMMABILITY	ADDITIONAL INFORMATION
1	EUROPOST 2 by Gabriel	100% New Zealand wool	Rubs Martindale (EN ISO 12947-2) > 50.000	EN 1021 1B2 / UNI 9175 class 1 I EMME BS 5852 P1 s. 06 / IMO MSC 307 (88) Annex 1 Part B MED CERTIFICATION IMO / CA-TB 117-2013	Standard 100 by OEKO-TEX® EU Ecolabel / 10 years guarantee
	FOCUS by Gabriel	100% New Zealand wool	Rubs martindale (EN ISO 12947-2) : 100 000	EN1021 1B2/ BS 5852 061V/ CA TB 117-2013 UNI 9175 Class1 IEMME	Standard 100 by OEKO-TEX® EU Ecolabel / 10 years guarantee
	CAPTURE by Gabriel	85% New Zealand wool 15% Polyamide	Rubs martindale (EN ISO 12947-2) > 200.000	EN 1021 1B2 Cigarette and Match / BS 5852 Part 1 0,1 Cigarette & match / CA TB 117-2013	Standard 100 by OEKO-TEX® EU Ecolabel / 10 years guarantee
	REMIX 2 by Kvadrat	90% New Zealand wool 10% Nylon	Rubs martindale (EN ISO 12947) > 100.000	EN1021 1.2 / NFD60013 / BS 5852 part 1 US Cal. Bull. 117-2013	EU Ecolabel / Greenguard Gold HPD / 10 years guarantee
	CRISP by Gabriel	93% New Zealand wool 7% Polyamide	Rubs Martindale (EN ISO 12947-2) > 200.000	BS 5852 Part 1 0,1 Cigarette & match / EN 1021 1B2 / CA TB 117-2013 / IMO MSC 307 (88) An1 Part B / MED Certificate IMO UNI 9175 Class1 IEMME	Standard 100 by OEKO-TEX® EU Ecolabel / 10 years guarantee
TORONTO by Skai (Eco-Leathers)	Approx. 84% PVC-compound Approx. 16% PES-knitted fabric	Martindale inverse (DIN EN ISO 5470-2) > 300.000	Flame protection DIN EN 1021-1+2 / BS5852 IS-0+1 MVSS302 IMO Certificate 0161-20 IMO FTFC PartB	Sustainable / Vegan Staynu technology	
2	PALMA NF by Skai (Eco-Leathers)	Approx. 83% PVC-compound Approx. 17% CO-knitted fabric	Martindale inverse (DIN EN ISO 5470-2) > 300.000	NF M1 / BSS5852 IS-0+1+5 / DIN4102 (Part 1, B1) DIN4102 (Part 1, B2) DIN53438 (Part 2) / EN1021-1+2 / MVSS302	Sustainable Vegan
	MORPH by Gabriel	85% New Zealand wool 15% Polyamide	Rubs Martindale (EN ISO 12947-2) > 200.000	BS EN 1021 1B2 Cigarette and Match / BS 5852 Part 1 0,1 Cigarette & match / BS 5852 Crib 5 / CA TB 117-2013	Standard 100 by OEKO-TEX® EU Ecolabel / 10 years guarantee
	RE-WOOL by Kvadrat	45% Recycled wool 45% New wool worsted 10% Nylon	Rubs martindale (EN ISO 12947) > 50.000	AS/NZS 1530.3 / BS 5852 crib 5 optional treatment / BS 5852 ignition source 3 / BS 5852 part 1 / IMO FTP Code 2010 Part B NF D 60 013 / UNI 9175 11M / US Cal. Bull. 117-2013 EN 1021-1/2 / SN 188 898 5.3 optional treatment AS/NZS 3837 class 2 / ÖNORM B1/Q1	EU Ecolabel Greenguard Gold HPD 10 years guarantee
	MOLLY 2 by Kvadrat	100% New Zealand wool	Rubs martindale (EN ISO 12947) > 75-100.000	EN1021 1.2 / DIN 4102 B2 / US Cal. Bull. 117-2013 UNI 9175 11M	EU Ecolabel / Greenguard Gold HPD / 10 years guarantee
3	LUNA 2 by Gabriel	90% New Zealand wool 10% Polyamide	Rubs Martindale (EN ISO 12947-2) > 70.000	CA TB 117-2013 / EN 1021 1B2 / BS 5852 Part 1 0,1 Cigarette & match / UNI 9175 Class1 IEMME	Standard 100 by OEKO-TEX® EU Ecolabel / 10 years guarantee
	STEELCUT TRIO 3 by Kvadrat	90% New wool (worsted) 10% Nylon	Rubs martindale (EN ISO 12947) > 100.000	EN1021 1.2 / NFD60013 / BS 5852 part 1 DIN 4102 B2 US Cal. Bull. 117-2013	EU Ecolabel / Greenguard Gold HPD / EPD / 10 years guarantee
	FOCUS MELANGE by Gabriel	100% New Zealand wool	Rubs martindale (EN ISO 12947) > 100.000	EN 1021 1B2 / BS 5852 061 / CA TB 117-2013 UNI 9175 Class1 IEMME	Standard 100 by OEKO-TEX® EU Ecolabel / 10 years guarantee
4	SERIE 900 FUSION by Gracia (Leather)	Full Grain European leather slightly buffed Pigmented and natural smooth grain 1,0 - 1,2mm	Rub fastness (EN ISO 11640 / EN ISO 11641): Dry ≥ 4, 800 cycles Note 4-5 Wet ≥ 3 - 4, 200 cycles - Note 4-5	UNE EN 1021 1B2 / IMO norm MSC.61(67), FTP code, Annex 1, Part B, Resolution A.652 (16)	100% genuine leather made of European bovine rawhides
	SERIE 100 by Gracia (Leather)	Corrected grain Pigmented and embossed 1,1 / 1,2mm Thickness	Rub fastness (DIN EN ISO 11640): Dry ≥ 4, 1000 cycles - Note 4-5 Wet ≥ 4, 200 cycles - Note 4-5	UNE EN 1021-1B2 / IMO norm MSC.61(67), FTP code, Annex 1, Part B, Resolution A.652 (16)	100% genuine leather made of European bovine rawhides
	HALLINGDAL 65 by Kvadrat	70% New wool 30% Viscose	Rubs martindale (EN ISO 12947) > 100.000	AS/NZS 1530.3 / BS 5852 Crib 5 / BS 5852 ignition source 3 / BS 5852 part 1 / IMO FTP Code 2010 Part B / NF D 60 013 / NFPA 260 / UNI 9175 11M / US Cal. Bull. 117-2013 / EN 1021-1/2 / ASTM E84 Class A Adhered / SN 198 898 5.3 optional treatment ÖNORM B1/Q1	EU Ecolabel Greenguard Gold HPD 10 years guarantee

Care instructions: Regular cleaning is important in order to keep the upholstery textile looking its best and to prolong its life. Dust and dirt wear down the textile and also reduce its fire-retardant properties. **Fabric regular care:** Vacuum frequently, ideally every week, at half power where appropriate. Wipe upholstery fabrics made from polyurethane with a dry or moist cloth. May also be vacuum cleaned with a soft brush. **Stain removal:** If you act quickly, it is not difficult to remove spills and prevent stains from forming. However, we cannot guarantee complete stain removal. First, scrape off any liquids or hardened residues with a spoon or a scoop before you proceed. Any loose particles must be vacuum cleaned before further cleaning. Liquids must be soaked up with an absorbent napkin or cloth. Remove non-greasy stains by carefully dabbing with a lintfree cloth or sponge wrung out in warm water. Edge marks can be avoided by dabbing gently in circular motions towards the centre of the stain with a clean lint-free cloth. Remove greasy stains by using appropriate detergents or solvents. In all cases, we recommend to test stain-removal agents on an inconspicuous area first, to see if there is any effect on the cover. Make sure to dry the fabric fully before use. It may also be necessary to use a hairdryer to avoid leaving edge marks. This applies especially to microfibre textiles. These tips are purely recommendations and cannot guarantee complete stain removal. In all cases, we recommend contacting a professional dry cleaning. In order to ensure satisfactory results, particularly for large stains, we recommend to contact a professional dry cleaner. It is important to state whether the stain has already undergone treatment.

For further information: www.gabriel.dk / www.kvadrat.dk / www.curtidosgracia.com / www.skai.com

REF: 010965



Palma NF Baltic



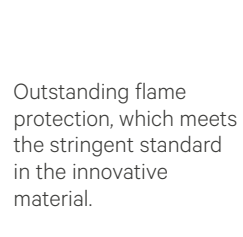
Palma NF Smoke



Palma NF Schwartz



Ashgrey F6471011



Palma NF

↑

Toronto →



White F6471002



Pearl F6471003



Birch F6471004



Cappuccino F6471005



Carob F6471009



Chestnut F6471007



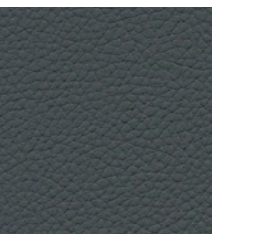
Cashmere F6471006



Mocca F6471010



Corn F6471013



Anthracite F6471015



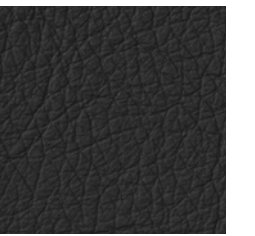
Gracia 945



Gracia 930



Gracia 117



Gracia 925



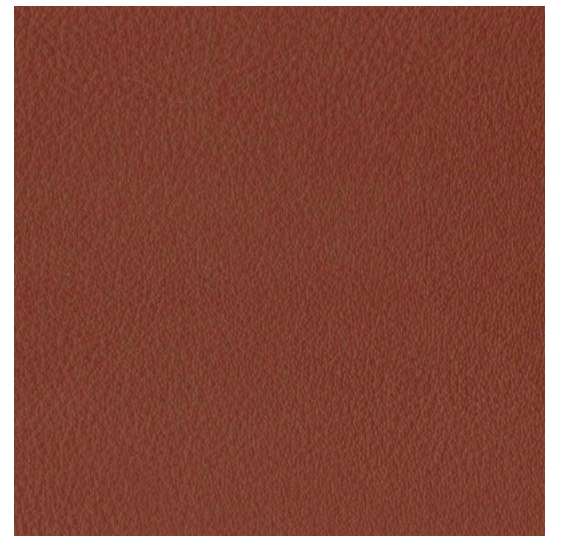
Gracia 903



Gracia 908



Gracia 1967



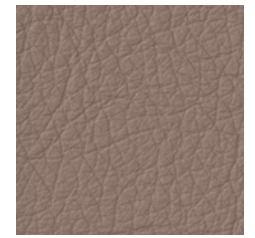
Gracia 1920



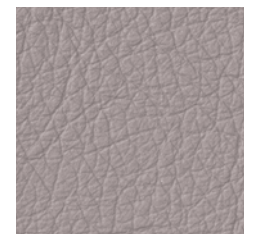
Gracia 913



Gracia 902



Gracia 911

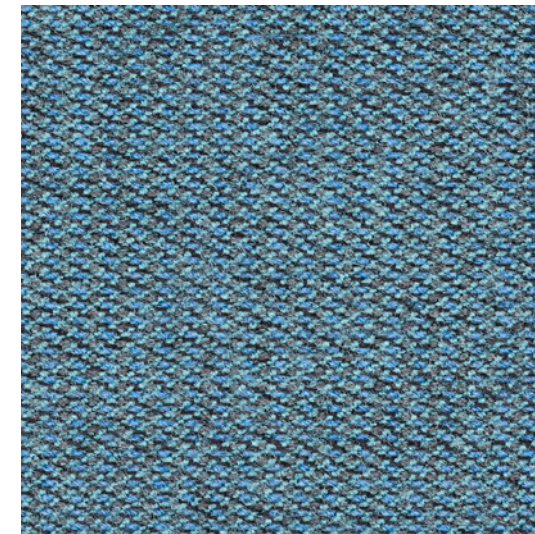


Gracia 943

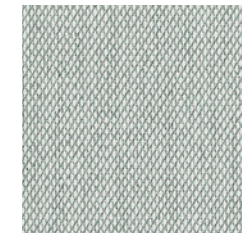
Fabrics



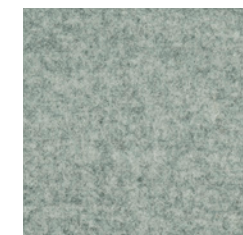
Crisp 4034



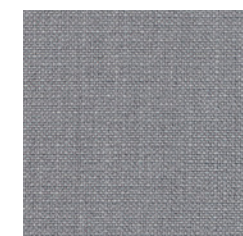
Capture 5001



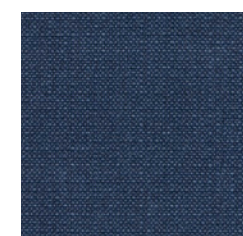
Steelcut Trio 113



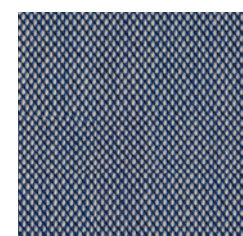
Focus melange 60310



Crisp 4021



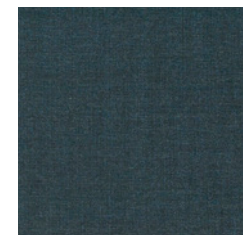
Crisp 04741



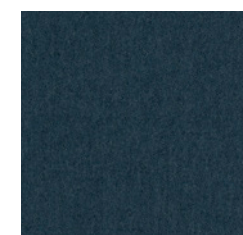
Steelcut Trio 716



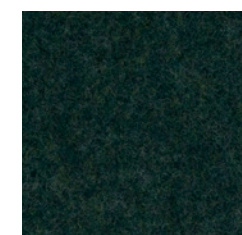
Hallingdal 65 764



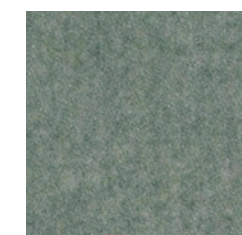
Remix 873



Focus 66011

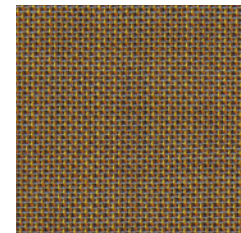


Luna 4811

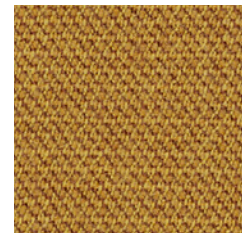


Luna 4812

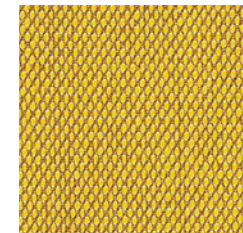
Fabrics



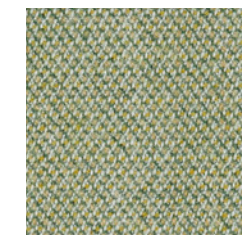
Morph 12101



Capture 6801



Steelcut Trio 453



Capture 5101



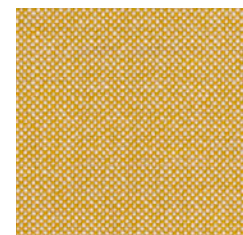
Remix 982



Luna 4204



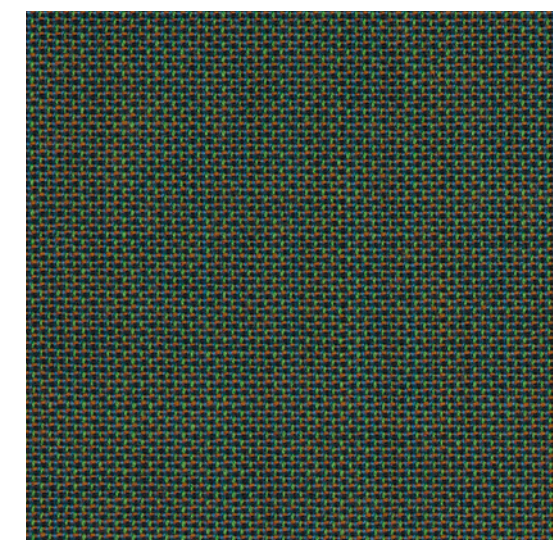
Focus melange 62117



Hallingdal 65 407



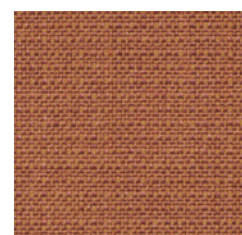
Focus 61036



Morph 14101

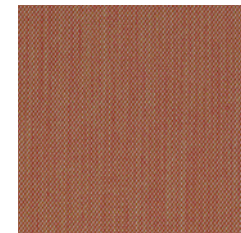


Remix 252



Crisp 4701

Fabrics



Steelcut Trio 515



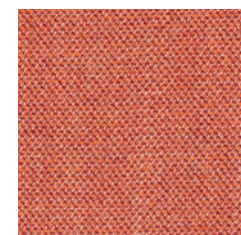
Remix 612



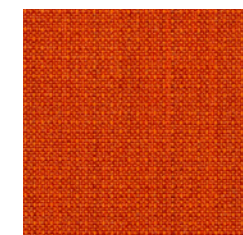
Focus 61035



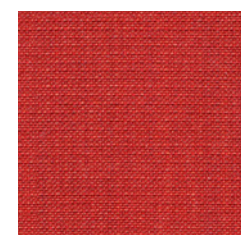
Luna 4301



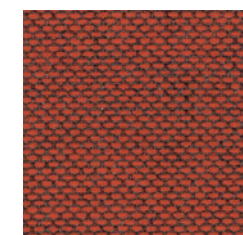
Capture 4301



Crisp 4430



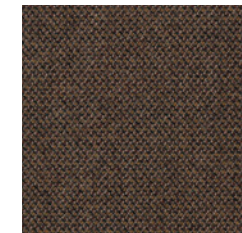
Crisp 4432



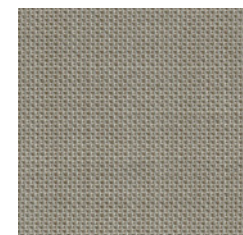
Re Wool 558



Focus 61040



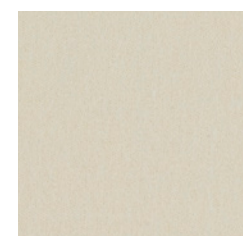
Capture 6301



Morph 5101



Europost 61003



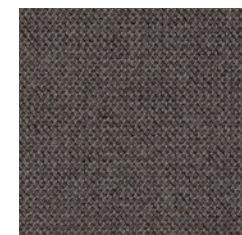
Focus 60209



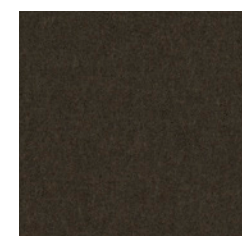
Re Wool 218



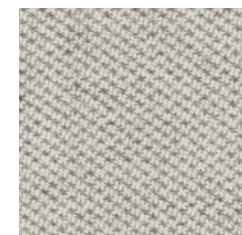
Focus melange 61237



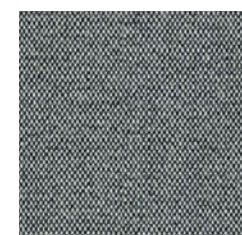
Capture 4201



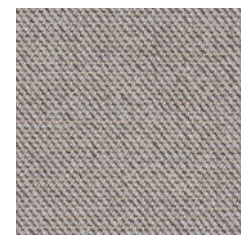
Focus 61043



Molly 114



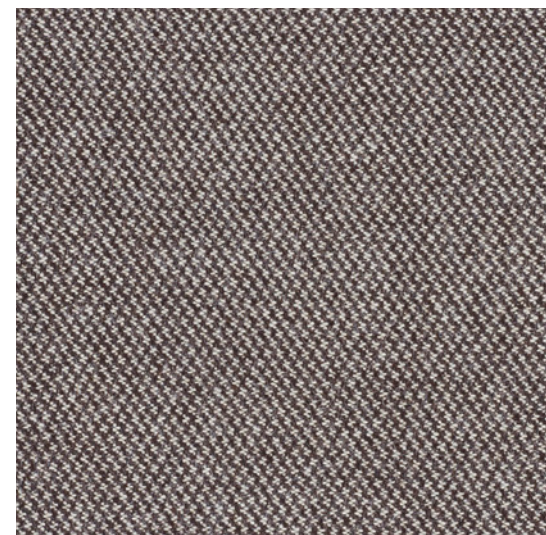
Hallingdal 65 126



Capture 4101



Molly 112



Molly 194



Crisp 4115



Molly 152



Hallingdal 65 110



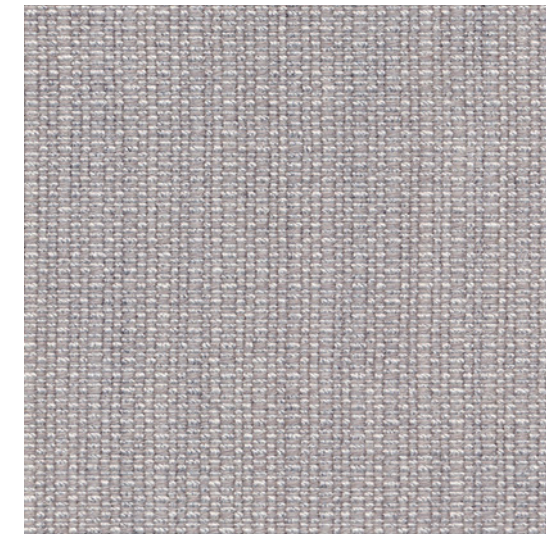
Focus melange 60900



Remix 173

Re wool 198

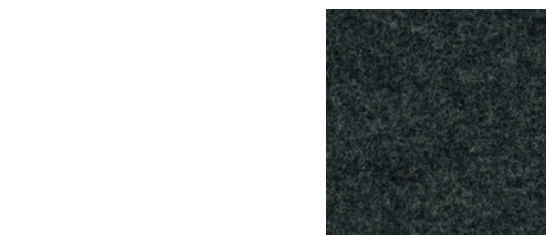
Fabrics



Crisp 4033



Hallingdal 65 110



Focus melange 60900



Re wool 198

Color may vary
(Laila Backrest only)



Natural Wool Felt

