



# AVIATOR CEILING FAN

## Installation Manual



**Model 18516/05 WHITE**  
**Model 18516/14 OIL RUBBED BRONZE**  
**Model 18516/11 SILVER**

**66" DC Ceiling Fan with Light**  
**Remote control included**

### **YOUR BRILLIANT AVIATOR CEILING FAN:**

Congratulations on the purchase of your new quality Brilliant AVIATOR Ceiling Fan. Before installation, it is most important that you read and follow the instructions in this use and care booklet, even if you feel you are quite familiar with this type of product.

Find a safe place and keep this booklet handy for future reference.

**Warning:**

Read and follow these instructions carefully and be mindful of all warnings shown throughout.

**MUST BE INSTALLED BY A QUALIFIED ELECTRICIAN**

## IMPORTANT SAFEGUARDS:

Read all instructions carefully, even if you feel you are quite familiar with this type of appliance. When using electrical appliances, in order to reduce the risk of fire, electric shock, and/or injury, these basic safety precautions should always be followed:

1. This appliance **MUST** be installed by a Qualified Electrical Contractor in accordance with the local regulations, and all local, state and national electrical codes. Any alterations or additions to building wiring must be completed by a licensed electrical mechanic, or person authorised by legislation to work on the fixed wiring of any electrical installation.
2. The ceiling fan must be connected to a 240V AC 50Hz power supply.
3. All electrical work must only be undertaken after disconnection of the power by removing fuses or turning off the circuit breaker, to ensure all pole isolation of the electrical supply.
4. The fan must be earthed.
5. The fan must be installed that the blades are **at least** 2.1 metres above the floor.
6. The structure that the ceiling fan is connected to must be capable of supporting a weight of at least 45kg. The fixing must be able to support the moving weight of the fan and must not twist or work loose.
7. Make sure that the installation site will not allow the rotating fan blades to come into contact with any object and that there is a minimum clearance of 150mm (6") from the blade tip to the wall or ceiling. Please note that the bigger this clearance is the better the airflow from your fan will be.
8. **DO NOT** use outdoors. Installing the fan in a position where it could be exposed to water or moisture is dangerous. Refer to Warranty for Alfresco use.
9. **DO NOT** connect the fan motor to a dimmer switch. This may give an unsatisfactory performance (motor hum) and cause damage to the motor.
10. This appliance is not intended for use by young children or infirm persons without supervision.
11. Young children should be supervised to ensure that they **DO NOT** play with the appliance.
12. It is not recommended that ceiling fans and gas appliances be operated in the same room at the same time.
13. Stop the fan completely before reversing the fan direction. This will prevent any damage to the motor of the fan or controller (if installed).
14. Do not insert anything into the fan blades whilst they are spinning. This will damage the blades and upset the balance of the fan causing the unit to wobble.
15. After the fan is completely installed make sure that all base and fan blade fixings are secured and tightened to prevent any problems.
16. Because of the fan's natural movement, some connections may loosen. Check the support connections, brackets and blade attachments twice a year to make sure they remain secured. If any are loose, tighten.
17. A blade balancing kit is included. Ensure blades are balanced immediately after installation to reduce wobble and noise.
18. **DO NOT** use a solid-state dimmer type fan controller. Use **ONLY** the provided switch controller for fan speed control.

## IMPORTANT NOTE:

**The important safeguards and instructions given in this manual are not meant to cover all possible conditions and situations that may occur. It must be understood that common sense, caution and care are factors which cannot be built into any product.**

## FAULT FINDER:

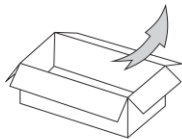
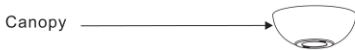
- Always check the "Trouble Shooting Checklist" included in this booklet before seeking warranty claim.
- Mechanical noise may be noticed on installation. Allow at least 8 hours settling-in period.
- Some fans may wobble more than others, even if they are identical. This does not necessarily indicate a fault.

## PREPARATION:

- Unpack your ceiling fan carefully, then remove all parts and components, and lay on a cloth or soft surface to avoid damage. **DO NOT** lay the motor housing on its side, the housing may get damaged.
- Before commencing installation, check that all parts are included. **NB:** You may need to remove all foam packaging material to ensure there are no missing components.

Please ensure you have received two boxes, one for the fan and a separate box for the blades.









### BOX 1



(For non-light use)

#### Hardware Bag

##### For Mounting Plate:

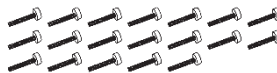
Flat Washer	x2		
Spring Washer	x2		
Machine Screw	x2		
Wood Screw	x3		

##### For Blade Installation:

Flat washer x 19 (one spare washer included)



Blade Screw x 19 (one spare screw included)



##### For Blade Balance :

Balanced slice x 1

Weight block (3G x 3)



#### Remote \*Battery Included

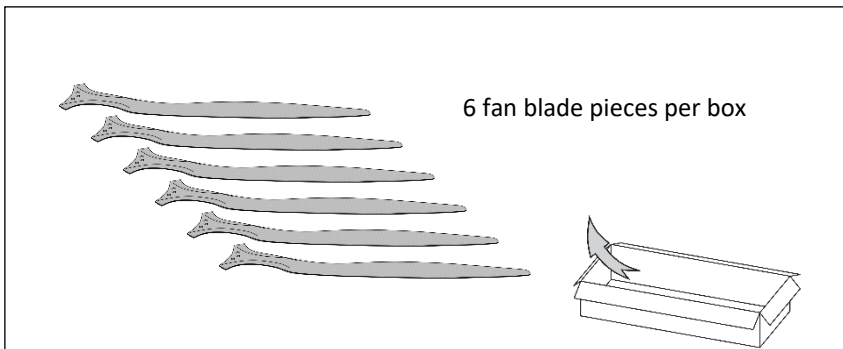


##### Hardware Bag

Wood Screw x2

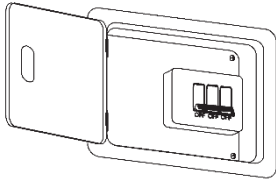


### BOX 2



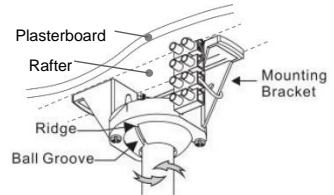
# INSTALLATION:

1. Turn off power at breaker box to avoid possible electrical shock.



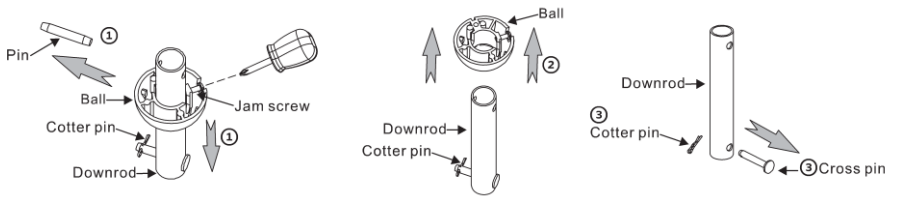
2. Install mounting bracket to ceiling.

*The fan weighs approx. 13kg. Ensure that the mounting bracket is securely mounted to ceiling timber that can support such a weight.*

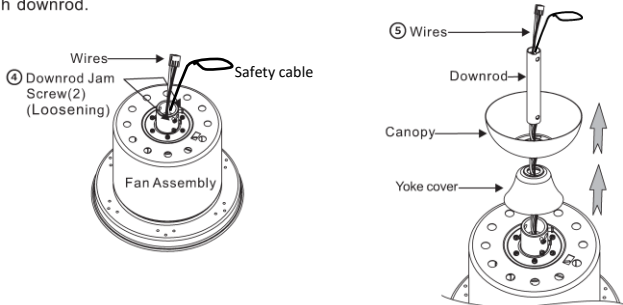


## 3. Installing Downrod and Yoke.

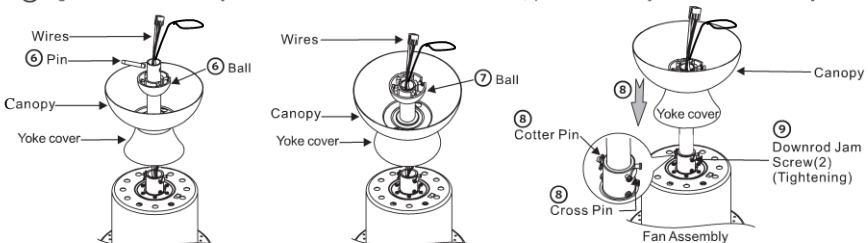
- ① Loosen the jam screw from the hanging ball and pull it down, remove the pin from downrod and keep it for step ⑥.
- ② Remove the hanging ball and keep it for step ⑥.
- ③ Remove cross pin and cotter pin from downrod and keep them for step ⑧.



- ④ Loosen 2 downrod jam screws at yoke.
- ⑤ Insert downrod through canopy and yoke cover, and feed motor lead wires (with 4 pin connector) through downrod.



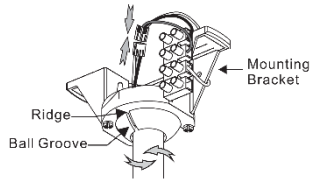
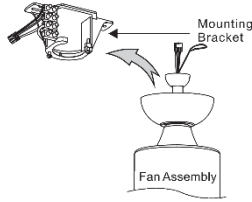
- ⑥ Insert hanging ball through downrod and insert the pin back into the downrod. (Removed from step ① and ②)
- ⑦ Tighten the jam screw back to hanging ball and make sure it is tight. (Loosen from step ①)
- ⑧ Insert downrod assembly into yoke, insert the cross pin through yoke & downrod and secure with cotter pin. (Removed from step ③)
- ⑨ Tighten both downrod jam screws to further secure downrod, pull down the yoke cover to cover yoke.



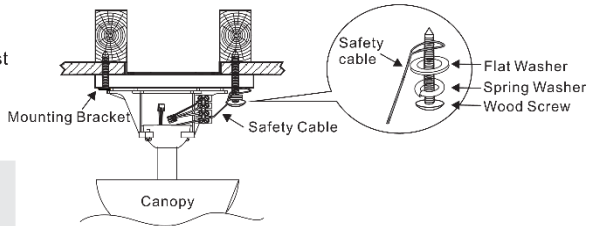
Rotate fan so that the groove on the ball engages the ridge in the mounting bracket.

#### 4. Hanging the fan.

Lift fan assembly onto mounting bracket.



Use wood screw, spring washer, and flat washer from hardware bag. Pass wood screw through closed loop of safety cable. Secure wood screw to ceiling joist through any available slot on mounting bracket. Make sure safety cable has been tightened securely.



**CAUTION: THE WOOD SCREW AND ITS SUPPORT MUST BE ABLE TO FULLY SUPPORT THE WEIGHT OF AT LEAST 100 LBS.**

#### 5. Wiring.

Follow diagram below.

① Insert house wires to terminal block

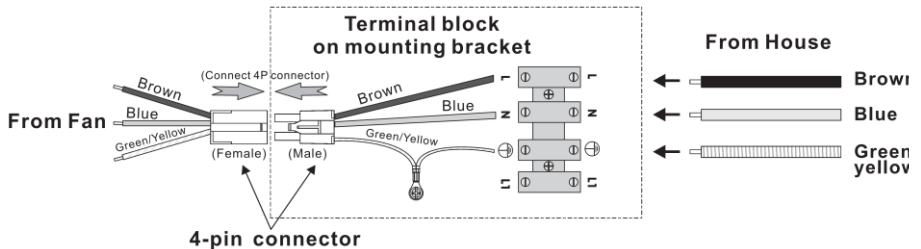
L ← Brown (From house)

N ← Blue (From house)

⊕ ← Green/ yellow (From house)

② Tighten all screws on terminal block after inserting wires from house.

③ Connect 4 pin female connector from fan to 4 pin male connector from terminal block.



**4-pin connector**

**Note: Wires from house may vary in color.**

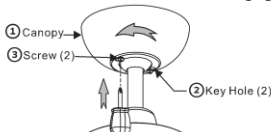
#### 6. Installing the Canopy.

**Note: Two screws are pre-installed on mounting bracket for canopy installation.**

① Push up canopy until two screws pre-installed on mounting bracket are engaged with two key holes on canopy.

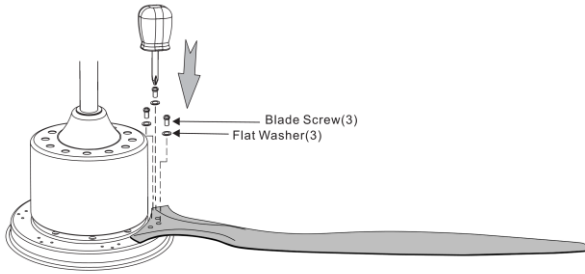
② Rotate canopy slightly until two pre-installed screw heads are engaged in the narrow end of key holes.

③ Tighten both screws.



## 7. Installing the Blades.

Attach blades to motor by using flat washer & screws provided from hardware bag.  
(\* Repeat until all 6 blades are installed firmly.)



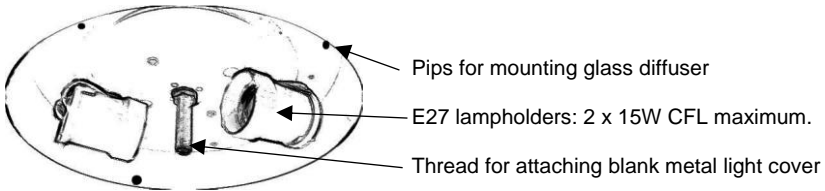
## 8. Installing the Globes.

Choose between having light or no light.

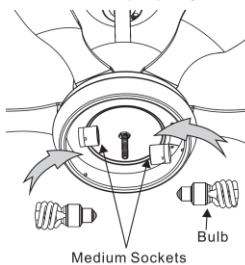
If lights are required, install 2 x E27 globes (2 x 15W CFL Maximum) and then install glass diffuser by aligning the grooves on the edge of the diffuser with the pips inside the lamp cavity. Gently rotate diffuser clockwise to fit. Do Not over tighten.

If not light is required, remove all globes and replace diffuser with metal cover by screwing the plate over the central thread.

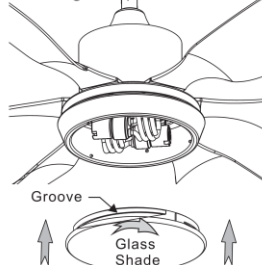
**DO NOT INSTALL METAL PLATE WITH GLOBES INSERTED.**



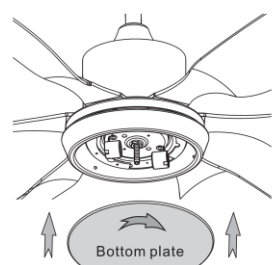
Install the bulbs (not included) to the medium sockets properly.



Attach the glass shade by screwing it onto the light kit pan clockwise.



Attach the bottom plate by screwing it clockwise onto the light kit pan.



If light is not required, remove globes and replace glass shade diffuser with metal cover.

**Your fan is ready for Operation.**  
**Turn ON power to fan and use fan as normal.**

## 9. Remote Settings.

Note: your fan and remote come factory set and are ready to be operated immediately.

① Remove battery cover.

② FAN code setting:

There are 4 switches for 16 possible code combinations just in case your house has other fans installed with the same codes. You may change your code switches by using a small screwdriver or ball point pen to slide each code switch up or down.

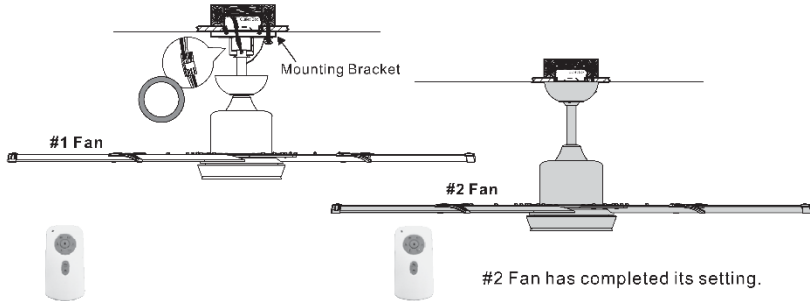
③ Install 12V 23AE battery x 1 pc (included).



## 10. Setting the Remote Controls for other new Ceiling Fans.

If another fan is required in the house and is to be controlled by a separate remote, then perform the following functions:

- Disconnect power to all Ceiling Fans (for at least 1 minute). This can be done by disconnecting power connector at each fan.
- Change the code by adjusting the DIP switches in the battery compartment of the second remote control transmitter.
- Reconnect power to the second Ceiling Fan by reconnecting power connector.



**Repeat above Section 9 for all new Ceiling Fans.  
Once finished, turn ON power to all fans.**

To operate the fan in forward direction press any buttons I – VI. For reverse operation first stop the fan then press 'I', then press the reverse button. The fan will slow down, then stop and change the rotation direction. Note: Do not press the reverse button when the fan operates on speed higher than 'I'.

- ① Press the button "SET" for 3-5 seconds till the fan starts forward operation (anti-clockwise).
- ② Install battery cover on transmitter.
- ③ This fan is doing setting now and will do the following steps to complete its setting automatically.
  - Forward operation (anti-clockwise) for about 2.5 minutes
  - Stop
  - Reverse operation (clockwise) for about 2.5 minutes
  - Stop

After a total of 5 minutes, this fan has completed setting successfully!



## CARE & CLEANING:

- Periodic cleaning of your ceiling fan is the only maintenance required.
- Use a soft brush or lint free cloth to avoid scratching the finish. Please turn off electricity when you do so.
- Do not use water when cleaning your ceiling fan. It could damage the motor or the wooden blades and create the possibility of an electrical shock.
- The motor has a permanently lubricated ball bearing and as such, is maintenance free.

## NOISE:

The manufacturer warranty covers actual faults that may develop, but NOT minor complaints, e.g. motor operation noise - ALL ELECTRIC MOTORS ARE AUDIBLE TO SOME EXTENT; this is more obvious when the fan is operating at low speeds.

## WOBBLE:

- Ceiling fans are designed to move during operation because they are not generally rigidly mounted
- Movement of a couple of centimetres is acceptable for safe operation.
- Balancing kits included could be used to adjust the balancing.

## NORMAL WEAR AND TEAR:

Threaded components working slightly loose or blade carriers even slightly bent due to vigorous cleaning or bumping can cause extra wobble and noise. THIS IS NOT COVERED UNDER WARRANTY but a little care and maintenance can reduce or prevent this problem.

## BALANCING:

1. This fan includes a blade balancing kit. Upon initial installation, the balance kit should be used on the fan blades to reduce wobble.
2. The balance kit includes instructions on how to perform the balancing procedure.
3. Balancing the fan and reducing wobble will result in quieter operation and optimum performance.



## TROUBLESHOOTING:

TROUBLE	PROBABLE CAUSE	SUGGESTED REMEDY
Fan will not start	A/ Fuse or circuit breaker has blown.	A/ Check main and branch circuit breakers.
	B/ Loose wire connections to the fan.	B/ Check line wire connections to fan.
	C/ Speed controller not in the correct position.	C/ Check speed controllers position.
Fan wobbles	A/ Fan blades are not horizontal to the ceiling.	A/ Retighten all screws on blades. <b>Do not</b> make any adjustments by applying pressure up or down on blades.
	B/ Blade screws are loose.	B/ Make sure all screws are tightened.
Fan sounds noisy	B/ Loose fan blades.	B/ Retighten all screws on fan.
	C/ Ceiling fan not secured against ceiling.	C/ Retighten all screws in the hanging bracket.
	D/ Incorrect speed controller.	D/ Change speed controller to the one supplied with the unit.
Mechanical noise	A/ Fan has not settled in fully.	A/ Allow at least 8 hours settling in period.

## WARRANTY CONDITIONS:

- Installation must be performed by a qualified and licensed electrician. The warranty will not apply if the ceiling fan is installed by other than a licensed electrician. Problems arising from incorrect installation are not covered by warranty. The cost of repairs and / or service call arising from incorrect installation, not due to faulty material or workmanship in accordance with the Brilliant warranty, will be payable by the purchaser at the time of repair.
- This warranty is only valid for appliances used according to the manufacturer's instructions.
- The manufacturer does not accept liability for any direct or consequential damage, loss or other expense arising from misuse or incorrect installation and operation of the appliance.
- Warranty will only be provided where proof of qualified electrical installation is provided. Eg. Electrical Safety Certificate.
- The manufacturer will not accept in home expenses unless authorisation is granted prior to work commencing, and a CA number allocated.
- The in-home component of this warranty covers only actual electrical work undertaken, on or to the ceiling fan.
- Where a service call is undertaken and no fault is found with the ceiling fan, or where the fault is not covered under the terms of this warranty, a call-out fee may be charged.
- This product is not designed or intended for industrial or commercial use.



## Brilliant Fan Warranty

**Please note, this warranty voids any other warranties supplied with this product and complies with the new consumer guarantee requirements.**

### **WARRANTY:**

The benefits conferred by this warranty are in addition to all implied warranties, other rights and remedies in respect of the product, which the consumer has under Australian Consumer Law..

The original purchaser of this Brilliant Brighton Ceiling Fan is provided with the following warranty subject to the following conditions.

Brilliant Lighting (Aust) Pty Ltd warrants this ceiling fans motor for a period of 6 years from the date of purchase, the first 3 years are covered by an in-home warranty 3 years parts replacement. All parts deemed defective in workmanship or materials will be replaced free of charge.

The warranted use of fans outdoors are limited to Enclosed Alfresco like areas where conditions are similar to indoor installations.

The warranty conditions for fans installed in Enclosed Alfresco areas are as follows:

Fan must be shielded from wind and rain (enclosed area, min. 1.5m from edge of eave/roof).

The warranty will cover open circuit motor faults, and remote control faults if not related to outdoor exposure.

The Warranty will not cover outdoor related issues such as rusting, or failure clearly caused by water, moisture or wind.

The Warranty will not cover external appearance or finish of any part of the ceiling fan.

The Warranty will not cover Wooden bladed fans. These are recommended only to be used indoors.

This warranty is in addition to any other rights and remedies of the customer under any law. In applications not intended for household, personal or domestic use, liability is limited to replacement or reimbursement of product only.

*Our goods come with guarantees that cannot be excluded under the Australian Consumer Law. You are entitled to a replacement or refund for a major failure and compensation for any other reasonably foreseeable loss or damage. You are also entitled to have the goods repaired or replaced if goods fail to be of acceptable quality and the failure does not amount to a major failure.*

Any claim under this warranty must be made within 5 years of the date of purchase of the product. To make a claim under the warranty, take the product (with proof of purchase – receipt or similar) to the store where you purchased the product or contact Brilliant Lighting at the address below.

This warranty is given by:

**Brilliant Lighting (Aust) Pty. Ltd.**

**ABN 37 006 203 694**

**956 Stud Road Rowville, VIC 3178**

**Phone: 03 9765 2555**

**Email: [info@brilliant-lighting.com.au](mailto:info@brilliant-lighting.com.au)**

**MADE IN TAIWAN**