



## PORT MKII SHP210 - 100/320W

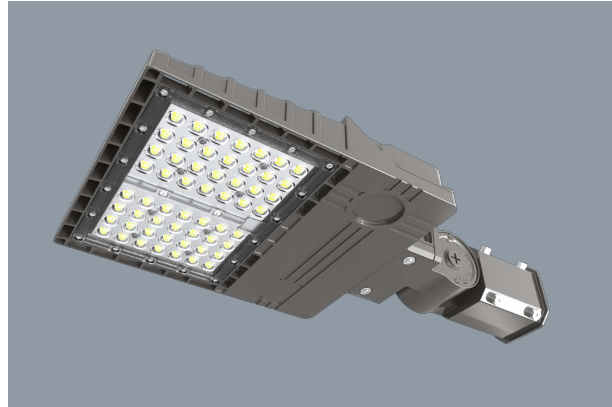
IP66 LED area luminaire, IK10 rated

### Application

A decorative and versatile exterior commercial solution

### Design Specifications

- Stylish die-cast aluminium body, charcoal black finish
- Adjustable spigot (60mm OD) mounting, 0 - 90 degree.
- High efficiency SMD LED chips, CRI>70, CCT 5000K, standard Type V (NDL2) and optional choice of Type III (NDL2T3) optical distribution.
- Integral constant current non-dimmable LED driver, pre-wired with 3 core rubber flex for easy termination
- Optional universal mounting assembly available to order (SHP210UB300/P)
- Optional ELV PE cell configurations available to order, PEB shorting cap provided as standard.



### Technical Specification

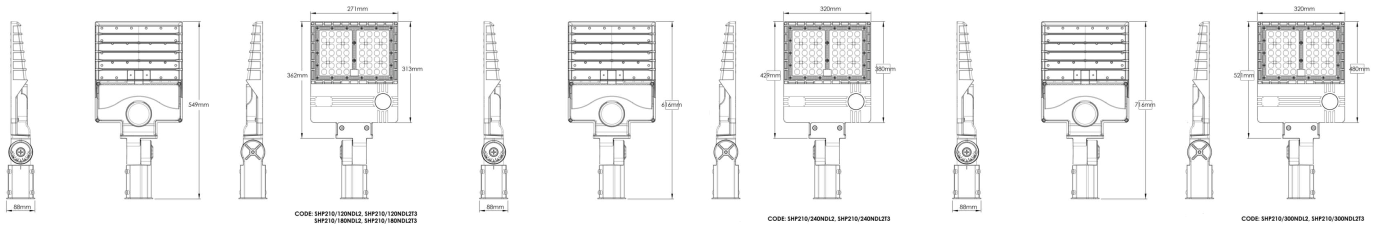
Model No.	Input Voltage (V/AC)	Power (W)	Lumens (lm)	CCT (K)	CRI	Mass (kg)
SHP210/120NDL2	240	100	15000	5000	70	6
SHP210/120NDL2T3	240	100	15000	5000	70	6
SHP210/180NDL2	240	150	22500	5000	70	6.3
SHP210/180NDL2T3	240	150	22500	5000	70	6.3
SHP210/240NDL2	240	200	30000	5000	70	7
SHP210/300NDL2	240	320	48000	5000	70	8.5
SHP210/300NDL2T3	240	320	48000	5000	70	8.5
SHP210UB300/P						

Model No.	Dim (mm)	Body Colour
SHP210/120NDL2	587(L) x 270(W) x 160(H)	CHARCOAL BLACK
SHP210/120NDL2T3	587(L) x 270(W) x 160(H)	CHARCOAL BLACK
SHP210/180NDL2	587(L) x 270(W) x 160(H)	CHARCOAL BLACK
SHP210/180NDL2T3	587(L) x 270(W) x 160(H)	CHARCOAL BLACK
SHP210/240NDL2	654(L) x 320(W) x 160(H)	CHARCOAL BLACK
SHP210/300NDL2	754(L) x 320(W) x 160(H)	CHARCOAL BLACK
SHP210/300NDL2T3	754(L) x 320(W) x 160(H)	CHARCOAL BLACK
SHP210UB300/P		CHARCOAL BLACK

Due to continued product and technology enhancements, data sourced from sal.net.au shall not form part of any contract and or technical performance guarantee unless expressly confirmed in writing by SAL at the time of order. Products are sold in accordance with [SAL Terms and Conditions of sale](#) and all images shown are for illustration purposes only and may vary from the actual colour or finish. Unless specifically stated, all IP ratings nominated for Interior products are from "below the ceiling".



## Dimensions



SHP210UB300/P





Why is the IP rating important? In brief, IP (Ingress Protection) ratings are defined in EN 60529 and simply defines the ability of an electrical product to seal and protect against the intrusion of foreign objects and water.

(I) As the first numeral stands for intrusion of a foreign object, where (P) as the second numeral stands for the penetration of moisture.

As a guide IP20 rated products would be seen in interior spaces with no requirement for protection against the elements, where an IP65 product would be found in an exterior application which required substantial protection against the elements.

*Need more information on IP ratings? Check out the SAL web FAQ's or speak to your local SAL team member.*

**For more  
information  
please  
scan me**

