



LED TRACK LIGHT STR4884 - 22W

Decorative three circuit rotatable 22 watt LED track light

Application

Designed for decorative and retail and commercial applications

Design Specifications

- Extruded aluminium profile, horizontal 350 degree rotatable , 90 degree vertical
- Quality white or black powder coated finish
- High output COB LED chip, CRI>90, CCT 3000K, 4000K
- Beam angle 38 deg standard, 12 or 24 degree optional
- Integral constant current non-dimmable 22 watt LED driver



- THREE CIRCUIT
- IP20
- ta25
- GROUNDING
- 2 YEAR COMMERCIAL WARRANTY
- 3 YEAR RESIDENTIAL WARRANTY
- WARM WHITE 3000K
- COOL WHITE 4000K

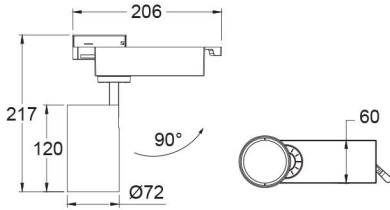
Technical Specification

| Model No. | Input Voltage (V/AC) | Power (W) | Lumens (lm) | CCT (K) | Body Colour | CRI |
|--------------|----------------------|-----------|-------------|---------|-------------|-----|
| STR4884WW/WH | 240 | 22 | 1900 | 3000 | WHITE | 90 |
| STR4884CW/WH | 240 | 22 | 1900 | 4000 | WHITE | 90 |
| STR4884WW/BK | 240 | 22 | 1900 | 3000 | BLACK | 90 |
| STR4884CW/BK | 240 | 22 | 1900 | 4000 | BLACK | 90 |

| Model No. | Beam Angle (°) |
|--------------|----------------|
| STR4884WW/WH | 38 |
| STR4884CW/WH | 38 |
| STR4884WW/BK | 38 |
| STR4884CW/BK | 38 |

Due to continued product and technology enhancements, data sourced from sal.net.au shall not form part of any contract and or technical performance guarantee unless expressly confirmed in writing by SAL at the time of order. Products are sold in accordance with [SAL Terms and Conditions of sale](#) and all images shown are for illustration purposes only and may vary from the actual colour or finish. Unless specifically stated, all IP ratings nominated for Interior products are from "below the ceiling".

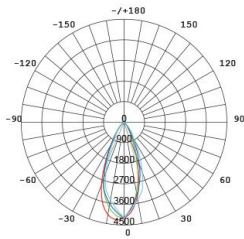
Dimensions



Photometric Data

Unit: cd C0/C180 — C30/C210 —
 cd C60/C240 — C90/C270 —

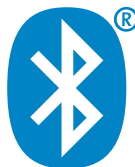
STR4884WW at 3000K



WHO NEEDS AN OLD TIMER CONTROL.

PIXIE SMART GPO IS SMARTER THAN THE REST.

MULTIFUNCTION
CONTROL



For more
information
please
scan me

