



GU10 LAMPHOLDER - SGU9000LH

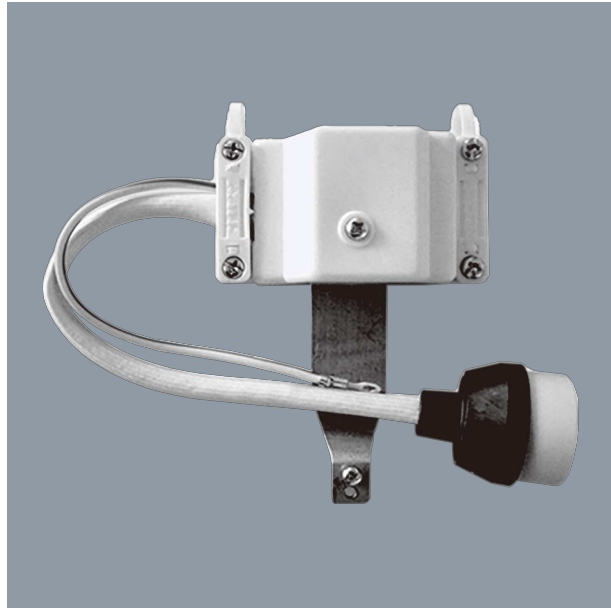
GU10 base lampholder, 250V, maximum 2A rated

Application

Replacement component, design for installation by a qualified electrical installer

Design Specifications

- Model # SGU9000LH
- 250V maximum 2A rated



Technical Specification

| Product | Model No. | Body Colour |
|---------|-----------|-------------|
| | SGU9000LH | WHITE |

Due to continued product and technology enhancements, data sourced from sal.net.au shall not form part of any contract and or technical performance guarantee unless expressly confirmed in writing by SAL at the time of order. Products are sold in accordance with [SAL Terms and Conditions of sale](#) and all images shown are for illustration purposes only and may vary from the actual colour or finish. Unless specifically stated, all IP ratings nominated for Interior products are from "below the ceiling".

THE NEW ESS106 IS SMALL IN SIZE BUT BIG ON FEATURES.



For more
information
please
scan me

