



CARINA SE7150 - 10W

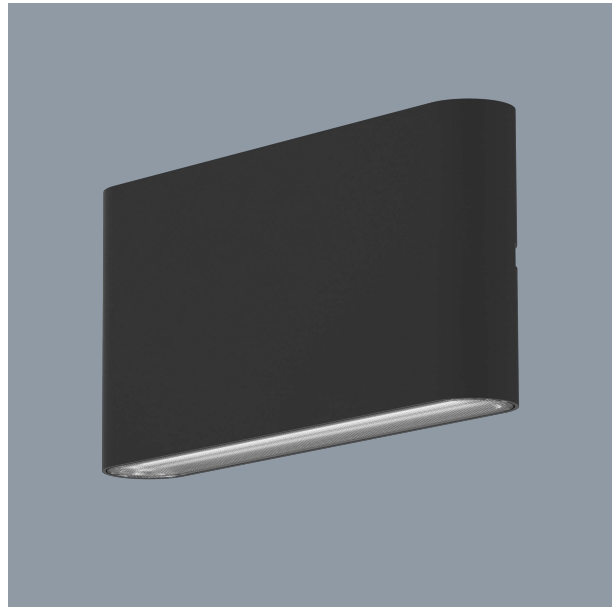
LED 10 watt surface mount wall luminaire

Application

Residential and commercial interior and exterior wall features

Design Specifications

- Durable aluminium body profile
- Quality matt black or white powder coat finish
- High efficiency SMD LED chips
- Selectable colour temperature 3000 / 4000 or 5700K
- Precise UP/DOWN beam distribution 8°
- Integral control gear



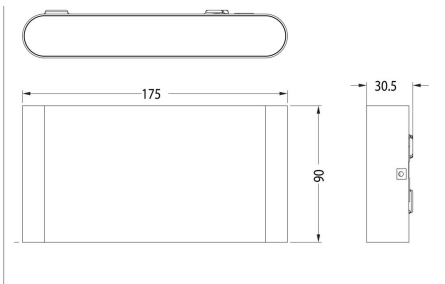
Technical Specification

| Model No. | Input Voltage (V/AC) | Power (W) | Lumens (lm) | CCT (K) | CRI | Beam Angle (°) |
|----------------|----------------------|-----------|---------------|----------------|-----|----------------|
| SE7150/10TC/WH | 240 | 10 | 950/1050/1000 | 3000/4000/5700 | 80 | 8 |
| SE7150/10TC/BK | 240 | 10 | 950/1050/1000 | 3000/4000/5700 | 80 | 8 |

| Model No. | Dimmable | Dim (mm) | Body Colour |
|----------------|----------|------------------------|-------------|
| SE7150/10TC/WH | NO | 175(L) x 90(W) x 30(H) | WHITE |
| SE7150/10TC/BK | NO | 175(L) x 90(W) x 30(H) | BLACK |

Due to continued product and technology enhancements, data sourced from sal.net.au shall not form part of any contract and or technical performance guarantee unless expressly confirmed in writing by SAL at the time of order. Products are sold in accordance with [SAL Terms and Conditions of sale](#) and all images shown are for illustration purposes only and may vary from the actual colour or finish. Unless specifically stated, all IP ratings nominated for Interior products are from "below the ceiling".

Dimensions





PIXIE AMBIENCE, CHANGE YOUR COLOUR TO MATCH YOUR STYLE.

The innovative PIXIE AMBIENCE SWITCH PLATES have been designed with the end user and installer in mind, allowing you to change the colour face plate as fashion demands.

For more
information
please
scan me

