



ALTONA-S PLUS SE7358 - 5W

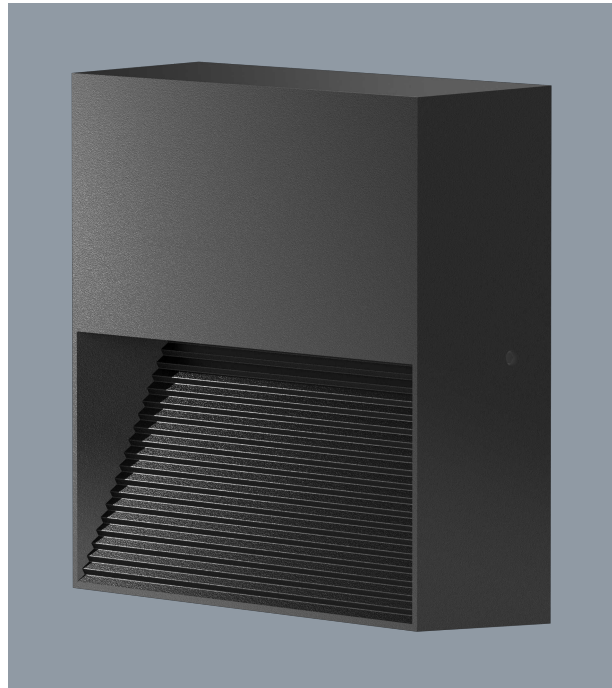
LED 5 watt surface mount square profile wall luminaire

Application

Residential stairs, walkways and interior commercial features

Design Specifications

- Durable aluminium body profile
- Quality matt black powder coat finish
- High efficiency SMD LED chips
- CCT 3000K or 5000K
- Beam distribution 70°
- Integral control gear



Technical Specification

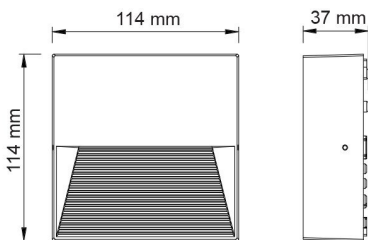
Model No.	Input Voltage (V/AC)	Power (W)	Lumens (lm)	CCT (K)	CRI	Beam Angle (°)
SE7358WW/BK	240	5	150	3000	80	70
SE7358NDL/BK	240	5	220	5000	80	70

Model No.	Dim (mm)
SE7358WW/BK	114(L) x 114(W) x 37(H)
SE7358NDL/BK	114(L) x 114(W) x 37(H)

Due to continued product and technology enhancements, data sourced from sal.net.au shall not form part of any contract and or technical performance guarantee unless expressly confirmed in writing by SAL at the time of order. Products are sold in accordance with [SAL Terms and Conditions of sale](#) and all images shown are for illustration purposes only and may vary from the actual colour or finish. Unless specifically stated, all IP ratings nominated for Interior products are from "below the ceiling".

Dimensions

Dimensions

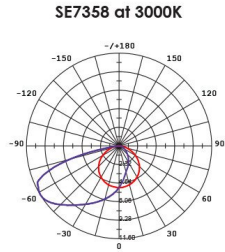




Photometric Data

Photometric Data

Unit: cd C0/C180 — C90/C270 —





Why is the IP rating important? In brief, IP (Ingress Protection) ratings are defined in EN 60529 and simply defines the ability of an electrical product to seal and protect against the intrusion of foreign objects and water.

(I) As the first numeral stands for intrusion of a foreign object, where (P) as the second numeral stands for the penetration of moisture.

As a guide IP20 rated products would be seen in interior spaces with no requirement for protection against the elements, where an IP65 product would be found in an exterior application which required substantial protection against the elements.

Need more information on IP ratings? Check out the SAL web FAQ's or speak to your local SAL team member.

**For more
information
please
scan me**

