



Scan to explore
WRD14 online

Wall WRD14

2 x 5.8W IP65 Rated Classic Bi-Directional Wall Light

Product Code	Colour Temperature	Colour Technology	Beam Angle	Trim Colour	Driver
WRD14	3 (3000K)	R (CRI 97+ Standard)	WB (Wide)	W (White)	ND (Non-dimmable)
	4 (4000K)			B (Black)	

Order Code **WRD144R-WB-B-ND**

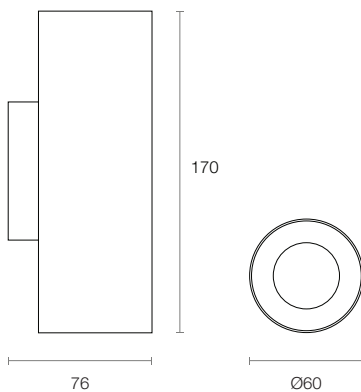


To configure this wall light, please visit
trendlighting.com.au/product/wall-WRD14

Physical Characteristics

Trim Colour	White Black
Dimensions	Ø60 x 170 (H) mm
Weight	680 g

Dimensions (mm)



Product Features

- Surface mounted IP65 rated sleek wall light in a uni-directional light configuration
- Manufactured from an aluminium body and powder coat finish
- Sealed safety glass lens for ingress protection
- Characterised by its black print insert, allowing for seamless integration with contemporary architecture
- CRI 97+ available in 3000K and 4000K CCT options
- Supplied with integral driver

Product Attributes



Technical Characteristics

Based on WRD144R-WB-B-ND

LED Power	2 x 5.8W
LED Type	COB
Lumen Output	1499 lm
Luminous Flux	881 lm
Efficacy	73.42 lm/W
Colour Temperature	3000K 4000K
Colour Technology	CRI 97+
Colour Deviation	SDCM ≤ 3
Lifetime	50,000 hours (L70)
Beam Angle	Wide

System Power	12W Typical
Driver Model	Trend DR-WRD14 (Non-dim)
Input	100-240V AC 50/60 Hz
Power Factor	>0.95
Dimming	Non-dimmable

General Characteristics

Category	Exterior
Family	Wall
Surface	Wall
Mounting	Surface Mounted
Ingress Protection	IP65



Scan to explore
WRD14 online

Wall WRD14

2 x 5.8W IP65 Rated Classic Bi-Directional Wall Light

Product Code	Colour Temperature	Colour Technology	Beam Angle	Trim Colour	Driver
WRD14	3 (3000K)	R (CRI 97+ Standard)	WB (Wide)	W (White)	ND (Non-dimmable)
	4 (4000K)			B (Black)	

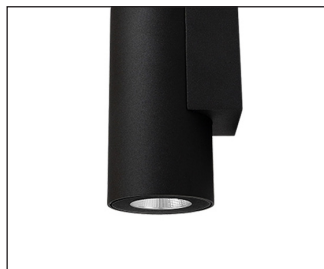
Order Code **WRD144R-WB-B-ND**

To configure this wall light, please visit
trendlighting.com.au/product/wall-WRD14

Trim Colour



W
White Trim



B
Black Trim