



Scan to explore
XSR10 online

Surface XSR10

10W Surface Mounted Downlight

Product Code	Colour Temperature	Colour Technology	Beam Angle	Trim Colour	Insert Colour	Driver
XSR10	2.7 (2700K)	(CRI 90+ Standard)	NB (Narrow)	W (White)	WI (White)	TE (Trailing Edge)
	3 (3000K)	V (CRI 93+ VIVID)	MB (Medium)	B (Black)	BI (Black)	DALI (DALI)
	3.5 (3500K)	R (CRI 97+ Standard)	WB (Wide)	S (Silver)	SI (Silver)	110V (1-10V)
	4 (4000K)				GI (Gold)	

Order Code **XSR104-WB-B-BI-TE**



To configure this downlight, please visit
trendlighting.com.au/product/surface-XSR10

Product Features

- Surface mounted LED downlight, manufactured with an aluminium body in powder coat finish and sealed face with silicone gasket
- Designed with no visible mounting screws providing a cleaner look with a large integral pin fin heatsink for excellent thermal management
- CRI 90+ available in 2700K, 3000K, 3500K and 4000K CCT options; CRI 93+ VIVID and CRI 97+ available in 2700K, 3000K and 4000K CCT options
- Supplied with an integral driver

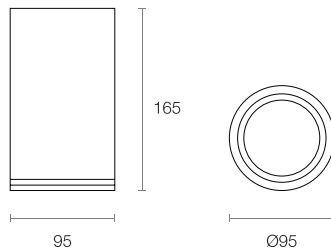
Product Attributes



Physical Characteristics

Trim Colour	White Black Silver
Insert Colour	White Black Silver Gold
Dimensions	Ø95 x 165 (H) mm
Weight	765 g

Dimensions (mm)



Technical Characteristics

Based on XSR104-WB-B-BI-TE

LED Power	10W
LED Type	COB
Lumen Output	1450 lm
Luminous Flux	1275 lm
Efficacy	91.73 lm/W
Colour Temperature	2700K 3000K 3500K 4000K
Colour Technology	CRI 90+ CRI 93+ VIVID CRI 97+
Colour Deviation	SDCM ≤ 2
Lifetime	50,000 hours (L80)
Beam Angle	Narrow Medium Wide

System Power	13.9W Typical
Driver Model	Trend 150071-250 (T/E)
Input	220-240V AC 50/60 Hz
Output	30-42V DC 250mA
Power Factor	>0.90
Protection	OVP, OTP, OCP, SCP, OPP
Dimming	Trailing Edge DALI 1-10V

General Characteristics

Category	Downlights
Family	Surface
Surface	Ceiling
Mounting	Surface Mounted
Ingress Protection	IP44



Scan to explore
XSR10 online

Surface XSR10

10W Surface Mounted Downlight

Product Code	Colour Temperature	Colour Technology	Beam Angle	Trim Colour	Insert Colour	Driver
XSR10	2.7 (2700K)	(CRI 90+ Standard)	NB (Narrow)	W (White)	WI (White)	TE (Trailing Edge)
	3 (3000K)	V (CRI 93+ VIVID)	MB (Medium)	B (Black)	BI (Black)	DALI (DALI)
	3.5 (3500K)	R (CRI 97+ Standard)	WB (Wide)	S (Silver)	SI (Silver)	110V (1-10V)
	4 (4000K)				GI (Gold)	

Order Code **XSR104-WB-B-BI-TE**

To configure this downlight, please visit
trendlighting.com.au/product/surface-XSR10

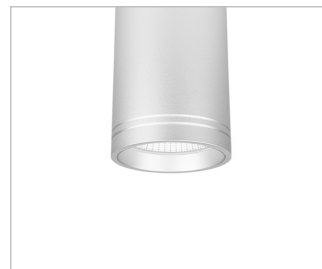
Trim Colour



W
White Trim

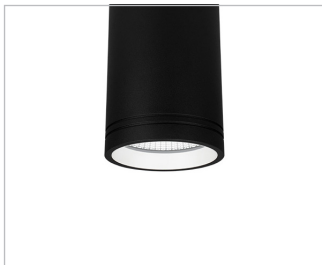


B
Black Trim



S
Silver Trim

Insert Colour



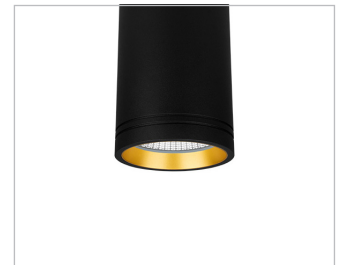
WI
White Insert



BI
Black Insert



SI
Silver Insert



GI
Gold Insert