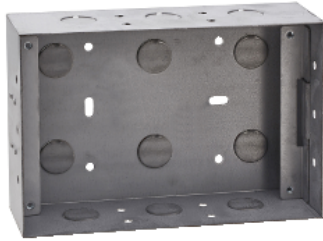


# Product data sheet

Specifications



## WALL BOX C-BUS BLACK AND WHITE TOUCH SCREEN MK2

5000CT2WB

### Main

Range of product	C-Bus
Product brand	Clipsal

### Complementary

Shape	Rectangular
Length	179.5 mm
Width	122.5 mm
Depth	55 mm

### Packing Units

Unit Type of Package 1	PCE
Number of Units in Package 1	1
Package 1 Weight	537.0 g
Package 1 Height	5.5 cm
Package 1 width	12.1 cm
Package 1 Length	17.9 cm
Unit Type of Package 2	CAR
Number of Units in Package 2	12
Package 2 Weight	6.8 kg
Package 2 Height	25 cm
Package 2 width	21.4 cm
Package 2 Length	33.8 cm

### Offer Sustainability

Sustainable offer status	Green Premium product
REACH Regulation	<a href="#">REACH Declaration</a>
REACH free of SVHC	Yes
EU RoHS Directive	Pro-active compliance (Product out of EU RoHS legal scope) <a href="#">EU RoHS Declaration</a>
Mercury free	Yes

---

<b>RoHS exemption information</b>	<a href="#">Yes</a>
<b>China RoHS Regulation</b>	<a href="#">China RoHS declaration</a> Product out of China RoHS scope. Substance declaration for your information
<b>Environmental Disclosure</b>	<a href="#">Product Environmental Profile</a>
<b>Circularity Profile</b>	<a href="#">End of Life Information</a>

---