

SEC SERIES IP65

Surface Mounted LED *Tri-CCT* Security Pillar Lights with / without Sensor

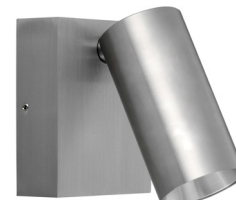
- Input voltage: 240V AC 50/60Hz
- Inbuilt Constant Current LED driver
- Adjustable: 180° (90° up/down and left/right)
- Housing: powder coated aluminium for white and black models; anodized aluminium for Titanium models;
- Housing: powder coated aluminium
- Mounting bracket: aluminium
- Diffuser: clear glass with honeycomb louver
- Tri-CCT (3000K/ 4000K/ 5500K)
- CCT inbuilt switch under back plate
- LED chips:
- CRI: ≥80
- Power factor: ≥0.9
- Ambient temperature: -10 to 40°C
- Not suitable for dimming
- Suitable for 2 way switching



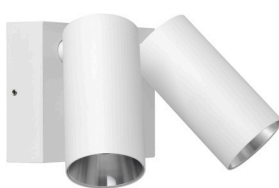
SEC05



SEC06



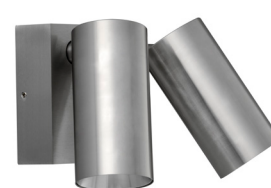
SEC07



SEC08



SEC09



SEC10



SEC08S



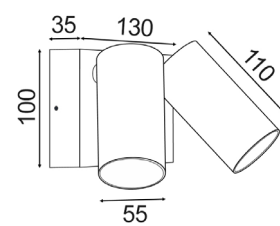
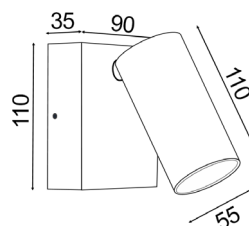
SEC09S



SEC10S

Sensor Technical Spec:

- Sensor type: PIR sensor
- Installation height: recommended 2-2.5m
- Detection angle: 120°
- Detection area: max.10m
- Detection range (ØxH): max.10m when installed 2-2.5m
- Time delay: 8±5 sec to 12±2 min (adjustable)
- Manual override: yes



*Must be installed by a licenced electrician (Installation instructions sheet provided in each product box)

| Part No. | Description | Colour | Lumens (LM) | | | Watt | Box Weight (kg) | Box Size (cm) | Carton QTY |
|----------|---------------------------------------|----------|-------------|-------|-------|------|-----------------|---------------|------------|
| | | | 3000K | 4000K | 5500K | | | | |
| SEC05 | SECURITY S/ADJ LED Wh No sensor | White | 760 | 800 | 850 | 8W | 0.7 | 13x10x13 | 1/20 |
| SEC06 | SECURITY S/ADJ LED Blk No sensor | Black | 760 | 800 | 850 | 8W | 0.7 | 13x10x13 | 1/20 |
| SEC07 | SECURITY S/ADJ LED TITANIUM No sensor | Titanium | 760 | 800 | 850 | 8W | 0.7 | 13x10x13 | 1/20 |
| SEC08 | D/ADJ LED MATTE WH No sensor | White | 2X760 | 2X800 | 2X850 | 2X8W | 1.2 | 16x13x13 | 1/10 |
| SEC09 | D/ADJ LED MATTE BLK No sensor | Black | 2X760 | 2X800 | 2X850 | 2X8W | 1.2 | 16x13x13 | 1/10 |
| SEC10 | D/ADJ LED TITANIUM No sensor | Titanium | 2X760 | 2X800 | 2X850 | 2X8W | 1.2 | 16x13x13 | 1/10 |
| SEC08S | D/ADJ LED MATTE WH + sensor | White | 2X760 | 2X800 | 2X850 | 2X8W | 1.2 | 16x13x13 | 1/10 |
| SEC09S | D/ADJ LED MATTE BLK + sensor | Black | 2X760 | 2X800 | 2X850 | 2X8W | 1.2 | 16x13x13 | 1/10 |
| SEC10S | D/ADJ LED TITANIUM + sensor | Titanium | 2X760 | 2X800 | 2X850 | 2X8W | 1.2 | 16x13x13 | 1/10 |