



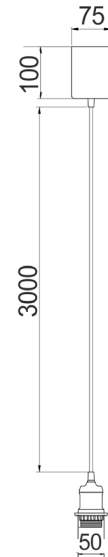
DIYPEN1



DIYPEN2



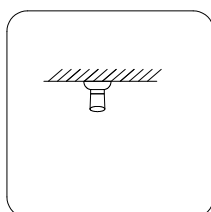
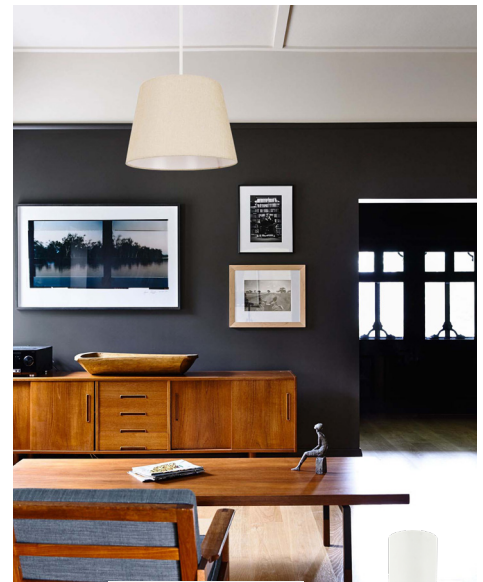
BC Plug adaptor to suit standard Batten holder



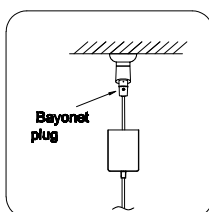
## D.I.Y. Plug in Pendant Suspension Kits

- Input voltage: 220-240V
- Material: iron
- Lamp holder: 1xE27 (Max.40W globe)
- Maximum weight of shade: 1kg
- Globe/Batten holder not included
- Cable can be adjusted
- For indoor use only
- Warranty: 1 Year replacement

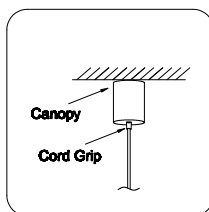
| Part No. | Colour | Diam (mm) | Cable (mm) | Canopy (mm) | Box Size (cm) | Box Weight (kg) | Carton Qty |
|----------|--------|-----------|------------|-------------|---------------|-----------------|------------|
| DIYPEN1  | Black  | Ø50       | 3000       | Ø75x100     | 18x9x15       | 0.51            | 1/10       |
| DIYPEN2  | White  | Ø50       | 3000       | Ø75x100     | 18x9x15       | 0.51            | 1/10       |



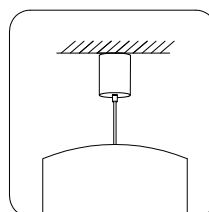
Typical Batten-Holder



Plug the Bayonet plug of the PEG suspension into the Batten Holder



Push up the Canopy and secure with the Cord Grip



Attach the Shade



Application with CLA SHADE Series