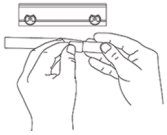
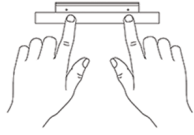


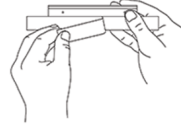
STEP 1 Mounting the TrueUp Mount to your wall



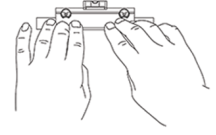
Peel green release liner.



Apply liner beneath the two holes on the back side of the mount.



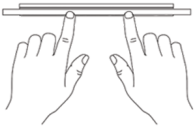
When ready to mount, peel the wall-side release liner.



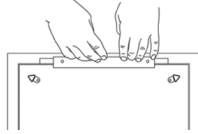
Place the level on top of the mount. When level, firmly press mount to wall.

To use the TrueUp Frame adapter, continue to Step 2a. Alternatively, if choose to use your frames existing wire or sawtooth hardware go to Step 2b.

STEP 2A Attach the TrueUp frame adapter to your frame



Peel release liner from narrow strip. Apply it to the back side of the frame adapter.



When ready to attach, peel liner and press onto the back of the frame.

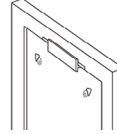
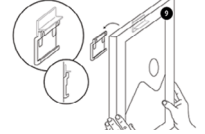
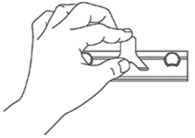


Image above illustrates how the frame adapter should look once attached.

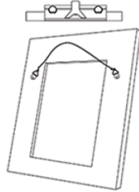


You can now place your frame onto the mount. The frame will remain level as you adjust side to side.

STEP 2B Use existing frame hardware with the TrueUp mount



The wire or sawtooth adapter hooks over the top of the mount as shown above.

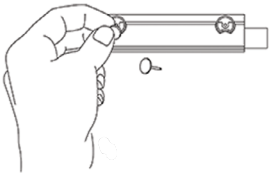


Simply hook your frame's existing hardware over the adapter.



The frame can still be adjusted side to side, but you will have to adjust the levelness.

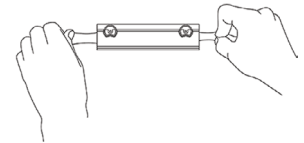
STEP 3 PIN IT



Because we can't predict your wall's texture or paint condition: The TrueUp system includes two small pins. Once you're satisfied with your frames placement, just PIN IT. Press the two pins into the holes on the front of the mount. This reassures you that the mount stays in place, regardless of wall texture or paint condition.

When you want to remove the frame, follow the simple removal instructions.

REMOVAL



Removing the TrueUp mount is simple. First, remove the two pins. Then, pinch both ends of the adhesive strip, as shown above, and gently pull outward. It should take about 8 seconds; don't rush it. And you don't need to worry about the mount falling.