



Water Proof Circular Connectors



R14 Series

- R14 Series connectors have a tight waterproofing mechanism which allows the model to be at a depth of up to 100 meters under water. Housing parts are made of stainless steel making them ideal to use under water.



Plug
R14-P3F



Cap for Plug
R14-10PC



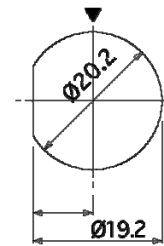
Bulkhead Mount Receptacle
R14-R3M



Cap for Receptacle
R14-10RC

■ Specifications

Connections	Screw on	
Applicable Cable	Cable O.D. ϕ 9.5 to ϕ 10.0	
Insulation Resistance	DC500V 1000M Ω Min	
Contact Resistance	5m Ω max.	
Water Proof	Connected State	980kPa (10kgf/cm ²)
	Only receptacle	490kPa(5kgf/cm ²)
Dimensions	Plug: O.D. ϕ 57.0mm / Length 68.5mm Receptacle: ϕ 28.0mm / Length 27.0mm	



Mounting Hole Dimensions

■ Models

No. of Pins	Plug	Receptacle	Voltage Rating	Current Rating	Withstanding Voltage
2	R14-P2F	R14-R2M	600	10	1800
3	R14-P3F	R14-R3M	350	10	1000
4	R14-P4F	R14-R4M	400	5	1200
5	R14-P5F	R14-R5M	350	5	1000
7	R14-P7F	R14-R7M	300	5	900