



Connector~Tech

The Harsh Environment Connector Division of Colourview Electronics

Providing

Harsh Environment Connector

SOLUTIONS

Water Proof Circular Connectors



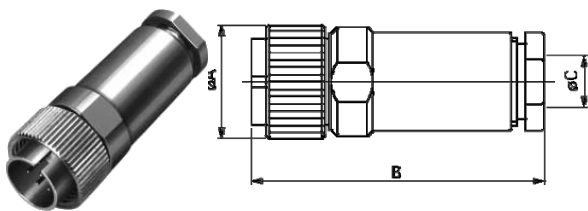
R04 Series

- R04 series connectors are built compact and the tight waterproofing mechanism allows the model to be at a depth of 20 meters under water. This model is ideal for applications where units are exposed to extreme weather or high humidity either inside or outside. Also available is a hermetically sealed receptacle.

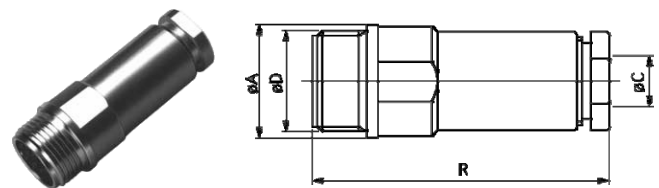
Specifications

Termination	Connections
	Screw on
	Solder
Temperature and Humidity	-25 °C to 85 °C 85% max.
Number of Pins	2, 3, 5, 6, 8, 12
Shell Material / Finish	Brass and Zinc alloy / Nickel Plating
Contact Material / Finish	Copper Alloy / Gold Plating
Insulation Material	PTB Resin (UL 94 V-0)
Water Proof (connected state)	196kPa (2kgf/cm ²)
Hermetic Seal	Helium leak rate
(Hermetically sealed receptacle only)	1 ATM. 1 x 10 ⁻⁹ cc/sec max.

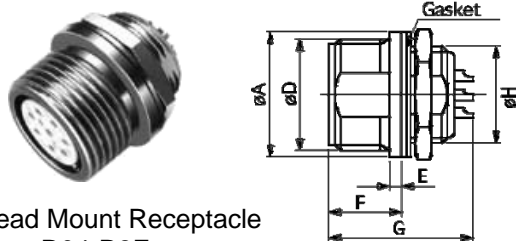
* See next page for Electrical Specifications.



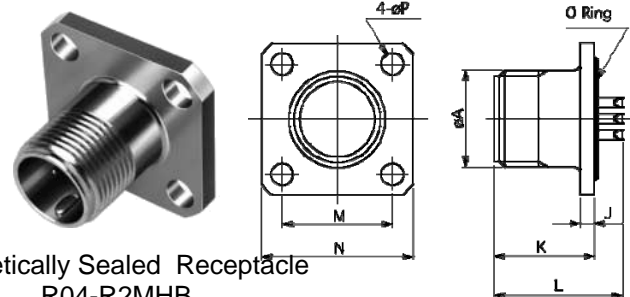
Plug
R04-P8M



Jack
R04-J8F6.3



Bulkhead Mount Receptacle
R04-R8F



Hermetically Sealed Receptacle
R04-R2MHB
(Only R04series)

Configuration

Insert Size	No. of Pins	Dimensions														
		A	B	C	D	E	F	G	H	J	K	L	M	N	P	R
6	2, 3, 5	12.0	38.0	4.8	10.5 P=0.75	1.5	9.0	17.8	9.0 P=0.5	2.0	14.5	18.6	14.0	20.0	3.2	38.0
9	6, 8	15.5	40.0	6.3, 6.8, 7.3	M14 P=1	1.5	9.0	17.8	12.0 P=0.8	2.0	14.5	18.6	18.0	22.0	3.2	40.5
12	12	20.0	43.3	6.3, 8.5	M18 P=1	1.5	9.0	17.8	M16 P=1	3.0	14.5	18.6	20.0	26.0	3.2	41.8

COLOURVIEW ELECTRONICS (QLD) PTY. LTD. (ABN 99 065 191 424)

Telephone: (+61 7) 3275 3188 Freecall: 1800 803 166 Fax: (+61 7) 3275 3033

Email: info@connectortech.com.au • Web: www.connectortech.com.au



Connector~Tech

The Harsh Environment Connector Division of Colourview Electronics

Providing

Harsh Environment Connector

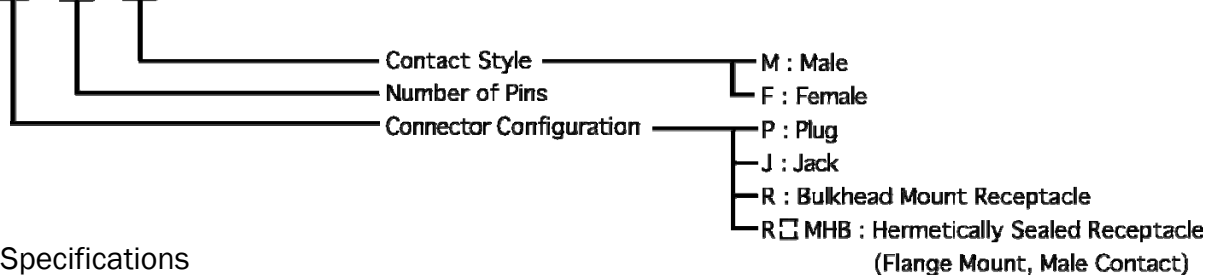
SOLUTIONS

Water Proof Circular Connectors



R04 Series

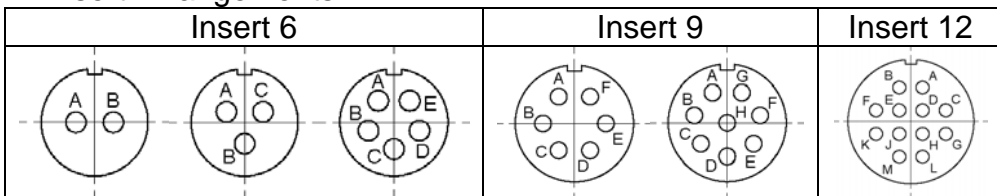
■ R 0 4 - P 5 M



■ Electrical Specifications

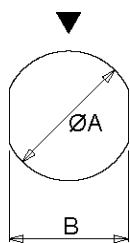
Insert Size	6			6		12
Number of Contacts	2	3	5	6	8	12
Withstanding Voltage (Vrms)	900	900	900	900	700	900
Voltage Rating (Vrms)	300	300	150	300	200	300
Current Rating (A)	2					
Applicable Wire Size	AWG#24 (0.2mm ² max.)					
Contact Resistance	8mΩ max.					
Insulation Resistance	DC500V 1000M min.					

■ Insert Arrangements

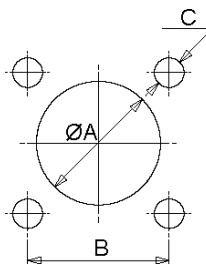


* Drawings above are ones viewed from the rear side of pin insulators. (pin contacts)

■ Mounting Hole Dimensions



Style 1



Style 2

Bulkhead Mount Receptacle

Insert Size	Style	ØA	B
6	1	9.2	8.4
9		12.2	11.2
12		16.2	14.7

Hermetically Sealed Receptacle (Flange Mount, Only R04 series)

Insert Size	Style	ØA	B	C
6	2	9.2	8.4	M3
9		12.2	11.2	
12		16.2	14.7	

COLOURVIEW ELECTRONICS (QLD) PTY. LTD. (ABN 99 065 191 424)

5 Commerce Street, Salisbury, Qld. 4107. Australia • P.O.Box 228, Salisbury, Q.4107

Telephone: (+61 7) 3275 3188 Freecall: 1800 803 166 Fax: (+61 7) 3275 3033

Email: info@connectortech.com.au • Web: www.connectortech.com.au