



EVENT TECHNOLOGY

Event technology

Plugs

Page **196**



Flanged plugs

Page **196**



Connectors

Page **198**



Flanged sockets

Page **198**



Socket outlet (DIN 49440)

Page **202**



T-Connect

Page **205**



Distribution boxes

Page **206**



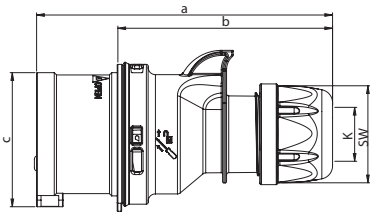
Hinged windows

Page **207**



Event technology MIDNIGHT-SERIES

Shark Plug

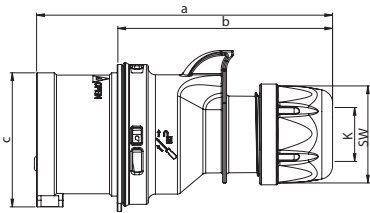


Poles	16 Amp			32 Amp		
	3	4	5	3	4	5
a	122	128	134	150	150	155
b	86	92	98	104	104	109
c	47	53	61	63	63	70
K_cable Ø [mm]	6-15	6-15	8-16	11,5-20	11,5-20	11,5-22
Connection type: Screw terminal						
Wire flexible [mm ²]	1-2,5			2,5-6		
Contact screws [Ncm]	100 Ncm			110 Ncm		
SW	42	42	42	50	50	50
Weight [g]	109	128	151	181	201	232

- with screw terminals
- housing material: PA6
- contacts: brass
 - to order nickel-plated contacts please add a "v" e.g. 015-6xv

IP44 splashproof

Turbo Shark Plug

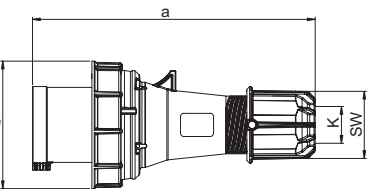


Poles	16 Amp			32 Amp		
	3	4	5	3	4	5
a	122	128	134	150	150	155
b	86	92	98	104	104	109
c	47	53	61	63	63	70
K_cable Ø [mm]	6-15	6-15	8-16	11,5-20	11,5-20	11,5-22
Connection type: Screwless terminal						
Wire flexible [mm ²]	1-2,5			2,5-6		
SW	42	42	42	50	50	50
Weight [g]	111	132	156	186	206	241

- screwless connection technology
- housing material: PA6
- contacts: brass
 - to order nickel-plated contacts please add a "v" e.g. 015-6TTxv

IP44 splashproof

Power Twist Plug

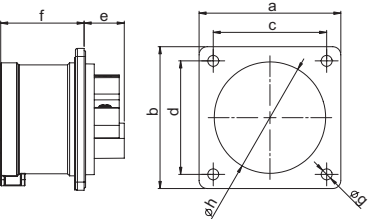


Poles	63 Amp			125 Amp		
	3	4	5	3	4	5
a	257	257	257	270	270	270
b	114	114	114	131	131	131
K_cable Ø [mm]	14,5-36	14,5-36	14,5-36	22,5-50	22,5-50	22,5-50
Connection type: Contact frame with screws						
Wire flexible [mm ²]	6-16			16-50		
Contact screws [Ncm]	200 Ncm			450 Ncm		
SW	61	61	61	81	81	81
Weight [g]	570	617	666	956	1064	1169

- Contact frame with screws (63A) for 125A with hexagon socket screws
- housing material: PA6
- contacts: nickel-plated contacts, with pilot contact (see page 9)

IP66/67 watertight

Flanged plug straight

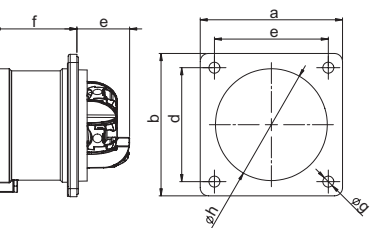


Poles	16 Amp			32 Amp		
	3	4	5	3	4	5
Flange						
a x b	70	70	70	70	70	70
Fixing center						
c x d	56	56	56	56	56	56
e	21	21	20	21	21	21
f	42	42	42	51	51	51
g	5,5	5,5	5,5	5,5	5,5	5,5
h	43	43	55	55	55	55
Connection type: Screw terminal						
Wire flexible [mm ²]	1-2,5			2,5-6		
solid [mm ²]	1-4			2,5-10		
Contact screws [Ncm]	100 Ncm			110 Ncm		
Weight [g]	86	101	118	125	145	165

- with screw terminals
- housing material: PA6
- contacts: brass
 - to order nickel-plated contacts please add a "v" e.g. 615-6xv
- According to EN 60309: For correct use a locking device has to be provided (see page 32)

IP44 splashproof

Turbo Twist Flanged plug straight



Poles	16 Amp		32 Amp	
	3	5	4	5
Flange				
a x b	70	70	70	70
Fixing center				
c x d	56	56	56	56
e	26	26	29	29
f	42	42	51	51
g	5,5	5,5	5,5	5,5
h	43	55	55	55
Connection type: Screwless terminal				
Wire flexible [mm ²]	1-2,5		2,5-6	
solid [mm ²]	1-4		2,5-10	
Weight [g]	899	122	151	172

- screwless connection technology
- housing material: PA6
- contacts: brass
 - to order nickel-plated contacts please add a "v" e.g. 615-6TTxv
- According to EN 60309: For correct use a locking device has to be provided (see page 32)

IP44 splashproof

230V~

50/60Hz
3p=6h
4p+5p=9h

400V~

50/60Hz
3p=9h
4p+5p=6h

Amp.	Poles	pack. unit
16	3	10
16	4	10
16	5	10
32	3	10
32	4	10
32	5	10

Cat.No.

Cat.No.

013-6x
023-6x

014-6x
015-6x
024-6x
025-6x



023-6x

16	3	10
16	4	10
16	5	10
32	3	10
32	4	10
32	5	10

013-6TTx

014-6TTx
015-6TTx

023-6TTx

024-6TTx
025-6TTx



015-6TTx

63	3	2
63	4	2
63	5	2
125	3	2
125	4	2
125	5	2

033-6xs

034-6xs
035-6xs

043-6xs

044-6xs
045-6xs



035-6xs

with flange 70 x 70 - fixing center 56 x 56

16	3	10
16	4	10
16	5	10
32	3	10
32	4	10
32	5	10

613-6x

614-6x
615-6x

623-6x

624-6x
625-6x



615-6x

with flange 70 x 70 - fixing center 56 x 56

16	3	10
16	5	10
32	4	10
32	5	10

613-6TTx

615-6TTx

624-6TTx
625-6TTx



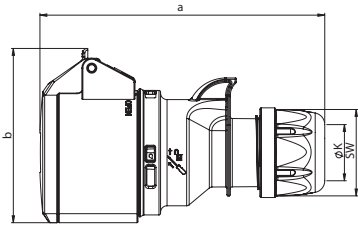
615-6TTx

Minimum order quantity: 50 pcs.



Event technology MIDNIGHT-SERIES

Shark Connector IP44

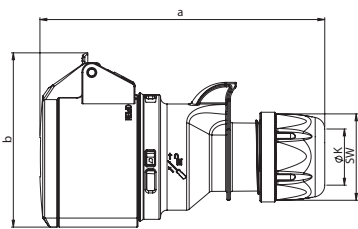


	16 Amp			32 Amp		
	3	4	5	3	4	5
Poles	3	4	5	3	4	5
a	133	138	145	161	161	168
b	76	80	89	91	94	100
K_cable Ø [mm]	6-15	6-15	8-16	11,5-20	11,5-20	11,5-22
Connection type:	Screw terminal					
Wire flexible [mm ²]	1-2,5			2,5-6		
Contact screws [Ncm]	100 Ncm			110 Ncm		
SW	42	42	42	50	50	50
Weight [g]	134	161	188	228	244	270

- with screw terminals
- housing material: PA6
- contacts: brass
- to order nickel-plated contacts please add a "v" e.g. 215-6xv

IP44 splashproof

Turbo Shark Connector IP44

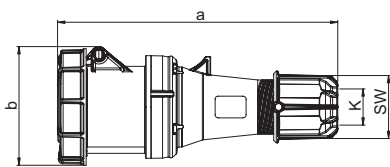


	16 Amp			32 Amp		
	3	4	5	3	4	5
Poles	3	4	5	3	4	5
a	133	138	145	161	161	168
b	76	82	89	94	94	100
K_cable Ø [mm]	6-15	6-15	8-16	11,5-20	11,5-20	11,5-22
Connection type:	Screwless terminal					
Wire flexible [mm ²]	1-2,5			2,5-6		
SW	42	42	42	50	50	50
Weight [g]	136	161	193	228	243	271

- screwless connection technology
- housing material: PA6
- contacts: brass
- to order nickel-plated contacts please add a "v" e.g. 215-6TTxv

IP44 splashproof

Power Twist Connector IP66/67

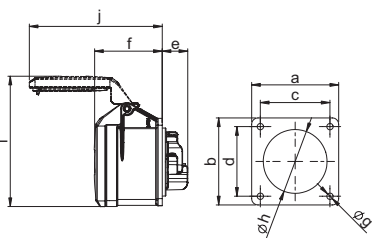


	63 Amp			125 Amp		
	3	4	5	3	4	5
Poles	3	4	5	3	4	5
a	269	269	269	287	287	287
b	114	114	114	124	124	124
K_cable Ø [mm]	14,5-36	14,5-36	14,5-36	22,5-50	22,5-50	22,5-50
Connection type:	Contact frame with screws					
Wire flexible [mm ²]	6-16			16-50		
Contact screws [Ncm]	200 Ncm			450 Ncm		
SW	61	61	61	81	81	81
Weight [g]	669	710	768	1060	1167	1266

- Contact frame with screws for 125A with hexagon socket screws
- housing material: PC/ABS
- contacts: brass with lamellar contact CuBe
- to order with pilot contact please add a „5“ e.g. 2335-6xs (see page 10)
- to order with pilot contact system (PCS) please add a „6“ e.g. 2336-6xs (see page 10)

IP66/67 watertight

Flanged socket straight IP44

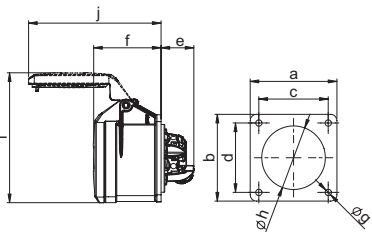


	16 Amp			32 Amp		
	3	4	5	3	4	5
Poles	3	4	5	3	4	5
Flange a x b	70	70	70	70	70	70
Fixing center c x d	56	56	56	56	56	56
e	21	21	21	23	23	23
f	55	55	55	67	67	67
g	5,5	5,5	5,5	5,5	5,5	5,5
h	43	45	55	55	55	58
i	99	101	105	112	112	108
j	101	101	107	122	122	136
Connection type:	Screw terminal					
Wire flexible [mm ²]	1-2,5			2,5-6		
solid [mm ²]	1-4			2,5-10		
Contact screws [Ncm]	100 Ncm			110 Ncm		
Weight [g]	115	127	141	162	178	206

- with screw terminals
- housing material: PA6
- contacts: brass
- to order nickel-plated contacts please add a "v" e.g. 315-6xv

IP44 splashproof
IP44/54 16/3; 16/5 and 32/5 are splash- and dustproof

Turbo Twist Flanged socket straight IP44



	16 Amp			32 Amp		
	3	4	5	3	4	5
Poles	3	4	5	3	4	5
Flange a x b	70	70	70	70	70	70
Fixing center c x d	56	56	56	56	56	56
e	27	27	27	27	27	27
f	55	55	55	67	67	67
g	5,5	5,5	5,5	5,5	5,5	5,5
h	43	45	55	55	55	58
i	87	101	105	112	112	108
j	101	101	107	122	122	136
Connection type:	Screwless terminal					
Wire flexible [mm ²]	1-2,5			2,5-6		
solid [mm ²]	1-4			2,5-10		
Weight [g]	117	128	146	161	178	207

- screwless connection technology
- housing material: PA6
- contacts: brass
- to order nickel-plated contacts please add a "v" e.g. 315-6TTxv

IP44 splashproof
IP44/54 16/3; 16/5 and 32/5 are splash- and dustproof

230V~

50/60Hz
3p=6h
4p+5p=9h

400V~

50/60Hz
3p=9h
4p+5p=6h

Amp.	Poles	pack-unit
16	3	10
16	4	10
16	5	10
32	3	10
32	4	10
32	5	10

Cat.No.
213-6x
223-6x

Cat.No.
214-6x
215-6x
224-6x
225-6x



223-6x

16	3	10
16	4	10
16	5	10
32	3	10
32	4	10
32	5	10

213-6TTx
223-6TTx

214-6TTx
215-6TTx
224-6TTx
225-6TTx



215-6TTx

63	3	2
63	4	2
63	5	2
125	3	2
125	4	2
125	5	2

233-6xs
243-6xs

234-6xs
235-6xs
244-6xs
245-6xs



235-6xs

with flange 70 x 70 - fixing center 56 x 56		
16	3	10
16	4	10
16	5	10
32	3	10
32	4	10
32	5	10

313-6x
323-6x

314-6x
315-6x
324-6x
325-6x



315-6x

with flange 70 x 70 - fixing center 56 x 56		
16	3	10
16	4	10
16	5	10
32	3	10
32	4	10
32	5	10

313-6TTx
323-6TTx

314-6TTx
315-6TTx
324-6TTx
325-6TTx

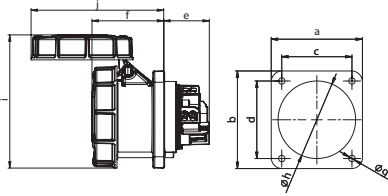


313-6TTx

Minimum order quantity: 50 pcs.



Event technology MIDNIGHT-SERIES

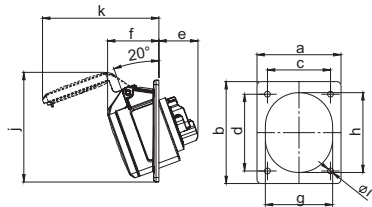


Power Twist Flanged socket straight 66/67

Poles	63 Amp			125 Amp		
	3	4	5	3	4	5
a	100	100	100	120	120	120
b	100	100	100	100	100	100
c	80	80	80	48	48	48
d	80	80	80	101	101	101
e	50	50	50	8	8	8
f	80	80	80	90	90	90
g	7	7	7	159	159	159
h	85	85	85	179	179	179
i	147	147	147	147	147	147
j	146	146	146	146	146	146
Connection type: Contact frame with screws						
Wire flexible [mm²] 6-16 16-50						
solid [mm²] 6-25 16-70						
Contact screws [Ncm] 200 Ncm 450 Ncm						
Weight [g] 488 533 587 752 890 986						

- Contact frame with screws (63A) for 125A with hexagon socket screws
- housing material: PA6
- contacts: brass with lamellar contact CuBe
 - to order with pilot contact please add a „5“ e.g. 3335-6xs (see page 10)
 - to order with pilot contact system (PCS) please add a „6“ e.g. 3336-6xs (see page 10)

IP66/67 watertight

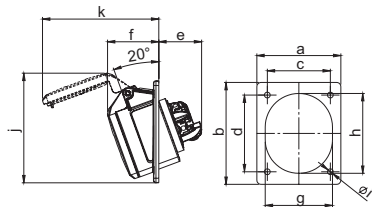


Flanged socket sloping IP44

Poles	16 Amp			32 Amp		
	3	4	5	3	4	5
a	80	80	80	80	80	80
b	97	97	97	97	97	97
c	60	60	60	60	60	60
d	73	73	73	73	73	73
e	38	38	38	48	48	48
f	47	47	49	54	54	55
g	51	56	65	65	65	70
h	61	67	76	75	75	80
i	5,5	5,5	5,5	5,5	5,5	5,5
j	97	103	105	105	105	99
k	99	104	111	119	119	130
Connection type: Screw terminal						
Wire flexible [mm²] 1-2,5 2,5-6						
solid [mm²] 1-4 2,5-10						
Contact screws [Ncm] 100 Ncm 110 Ncm						
Weight [g] 116 132 154 166 182 214						

- with screw terminals
- housing material: PA6
- contacts: brass
 - to order nickel-plated contacts please add a "v" e.g. 415-6xv

IP44 splashproof
IP44/54 16/3; 16/5 and 32/5 are splash- and dustproof

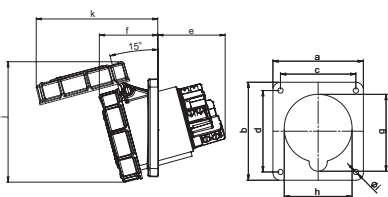


Turbo Twist Flanged socket sloping IP44

Poles	16 Amp			32 Amp		
	3	4	5	3	4	5
a	80	80	80	80	80	80
b	97	97	97	97	97	97
c	60	60	60	60	60	60
d	73	73	73	73	73	73
e	41	41	41	48	48	48
f	47	47	49	54	54	55
g	51	56	65	65	65	70
h	61	67	76	75	75	80
i	5,5	5,5	5,5	5,5	5,5	5,5
j	97	103	105	105	105	99
k	99	104	111	119	119	130
Connection type: Screwless terminal						
Wire flexible [mm²] 1-2,5 2,5-6						
solid [mm²] 1-4 2,5-10						
Weight [g] 119 133 158 165 182 215						

- screwless connection technology
- housing material: PA6
- contacts: brass
 - to order nickel-plated contacts please add a "v" e.g. 415-6TTxv

IP44 splashproof
IP44/54 16/3; 16/5 and 32/5 are splash- and dustproof



Power Twist Flanged socket sloping IP67

Poles	63 Amp			125 Amp		
	3	4	5	3	4	5
a	100	100	100	120	120	120
b	112	112	112	130	130	130
c	80	80	80	100	100	100
d	88	88	88	108	108	108
e	64	64	64	92	92	92
f	80	80	80	77	77	77
g	92	92	92	102	102	102
h	82	82	82	90	90	90
i	7	7	7	7	7	7
j	148	148	148	160	160	160
k	154	154	154	162	162	162
l	154	154	154	162	162	162
Connection type: Contact frame with screws						
Wire flexible [mm²] 6-16 16-50						
solid [mm²] 6-25 16-70						
Contact screws [Ncm] 200 Ncm 450 Ncm						
Weight [g] 495 540 595 804 896 995						

- Contact frame with screws (63A) for 125A with hexagon socket screws
- housing material: PA6
- contacts: brass with lamellar contact CuBe
 - to order with pilot contact please add a „5“ e.g. 4335-6xs (see page 9)
 - to order with pilot contact system (PCS) please add a „6“ e.g. 4336-6xs (see page 10)

IP67 watertight

230V~

50/60Hz
3p=6h
4p+5p=9h

400V~

50/60Hz
3p=9h
4p+5p=6h

Amp.	Poles	pack. unit	Cat.No.	Cat.No.
with flange 100 x 100 - fixing center 80 x 80				
63	3	2	333-6xs	
63	4	2		334-6xs
63	5	2		335-6xs
with flange 120 x 120 - fixing center 100 x 100				
125	3	2	343-6xs	
125	4	2		344-6xs
125	5	2		345-6xs



335-6xs

with flange 80 x 97 - fixing center 60 x 73				
16	3	10	413-6f8x	
16	4	10		414-6f8x
16	5	10		415-6x
32	3	10	423-6x	
32	4	10		424-6x
32	5	10		425-6x



415-6x

with flange 80 x 97 - fixing center 60 x 73				
16	3	10	413-6TTf8x	
16	4	10		414-6TTf8x
16	5	10		415-6TTx
32	3	10	423-6TTx	
32	4	10		424-6TTx
32	5	10		425-6TTx

TURBO TWIST click



415-6TTx

with flange 100 x 112 - fixing center 80 x 88				
63	3	2	433-6xs	
63	4	2		434-6xs
63	5	2		435-6xs
with flange 120 x 130 - fixing center 100 x 108				
125	3	2	443-6xs	
125	4	2		444-6xs
125	5	2		445-6xs

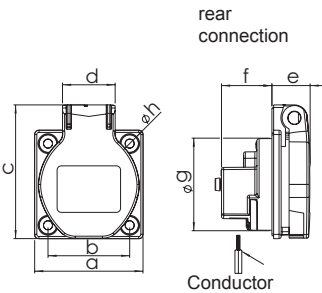


435-6xs




Event technology MIDNIGHT-SERIES

Socket outlet safety Austrian/German system with sealing bulge



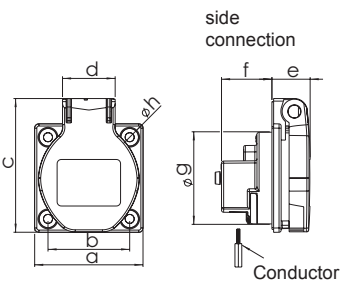
• STANDARD •	
	16 Amp
Poles	2P + E
a	50
b	38
c	62
d	25
e	22
f	24
g	43
h	4,2
Connection type:	Screwed contact
Wire flexible [mm ²]	1 - 2x2,5
solid [mm ²]	1 - 2x2,5
Contact screws [Ncm]	80
Weight [g]	45

- with sealing bulge
- with screwed contact
- housing material: PA6
- contacts: nickel-plated contacts

IP54 splashproof 


* Plugs and socket outlets for portable use are subject to the standard DIN VDE 0620-1:2010 and ÖVE/ÖNORM EA 8684-2-2:2010

Socket outlet safety Austrian/German system

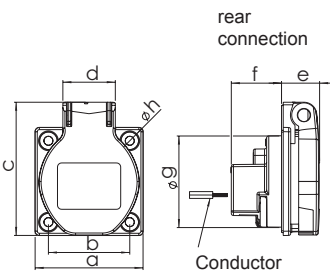


• STANDARD •	
	16 Amp
Poles	2P + E
a	50
b	38
c	62
d	25
e	18
f	24
g	43
h	4,2
Connection type:	Screwed contact
Wire flexible [mm ²]	1 - 2x2,5
solid [mm ²]	1 - 2x2,5
Contact screws [Ncm]	80
Weight [g]	45

- with screwed contact
- housing material: PA6
- contacts: nickel-plated contacts

IP54 splashproof 

Socket outlet safety Belgian/French system

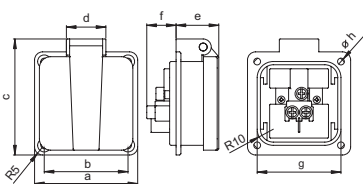


• STANDARD •	
	16 Amp
Poles	2P + E
a	50
b	38
c	62
d	25
e	18
f	24
g	43
h	4,2
Connection type:	Screwed contact
Wire flexible [mm ²]	1 - 2x2,5
solid [mm ²]	1 - 2x2,5
Contact screws [Ncm]	80
Weight [g]	45

- with screwed contact
- housing material: PA6
- contacts: nickel-plated contacts
- with child protection (shutter)


IP54 splashproof 

Socket outlet safety British system



• STANDARD •		• STANDARD •	
	13 Amp		13 Amp
Poles	2P + E		2P + E
a	64		50
b	52		38
c	72		54
d	25		25
e	26,5		18
f	18		22
g	52		35
h	4,2		4,5
Connection type:	Screwed contact		Screwed contact
Weight [g]	67		50


- with screwed contact
- housing material: PA6
- side connection

IP54 splashproof 

250V~

50/60Hz

PCE

Amp.	Poles	pack. unit	Abbreviations/Types	Cat.No.
16	3	100	 Flange: 50x50mm, Fixing center: 38x38mm	1050-0ssw
16	3	100	 Flange: 50x50mm, Fixing center: 38x38mm	1050-0ss
16	3	100	 Flange: 50x50mm, Fixing center: 38x38mm	1040-0sc
13	3	100	Flange: 64x64mm, Fixing center: 52x52mm	1020-0s
13	3	100	Flange: 50x50mm, Fixing center: 38x38mm	1020-5s



Event technology MIDNIGHT-SERIES



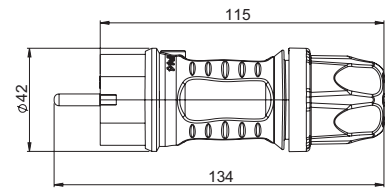
Solid rubber plug

- with screwless cable gland
- dual earthing system
- insert: rubber

IP44 splashproof

05622-ss

pack.unit: 20



Solid rubber connector Austr./German system

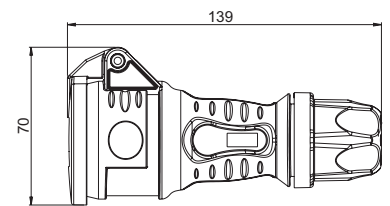
- with screwless cable gland
- with cap
- insert: rubber

IP44 splashproof

with cap **25621-ss**

with hinged lid **25622-ss**

pack.unit: 10



Solid rubber connector Belg./French system

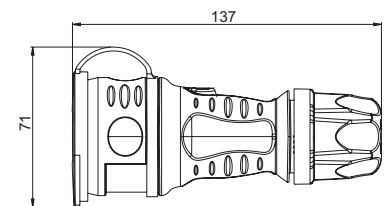
- with screwless cable gland
- with cap
- insert: polyamide

IP44 splashproof

integrated gasket inside **24611-ss**

integrated gasket inside and child protection **24611-ssc**

pack.unit: 10



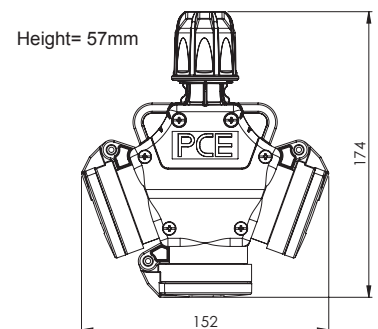
3-way connector solid rubber Austr./German system

- with hinged lid
- insert: rubber
- with screwless cable gland

IP44 splashproof

253622-sxs

pack.unit: 5



3-way connector rubber Belgian/French system

- with cap
- insert: polyamide

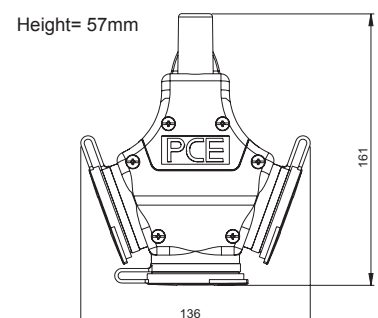
IP44 splashproof

with child protection (shutter)

24311-sxs

24311-sxsc

pack.unit: 5



T-Connect

Equipment:

- 1 CEE-plug 16A 3p 6h
- 1 CEE-socket 16A 3p 6h
- 1 cable entry
(terminal block max. 3x2,5mm²)

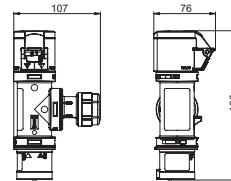
IP44 splashproof



Example

94325000

pack.unit: 10



T-Connect

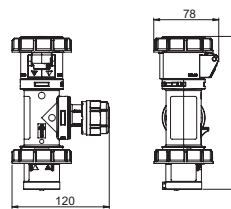
Equipment:

- 1 CEE-plug 16A 3p 6h
- 1 CEE-socket 16A 3p 6h
- 1 cable entry
(terminal block max. 3x2,5mm²)

IP67 watertight

94326000

pack.unit: 10



T-Connect with cable

Equipment:

- 1,5m cable H07RN-F 3G1,5
with CEE-plug 16A 3p 6h
- 1 cable entry
(terminal block max. 3x2,5mm²)
- 1 CEE-socket 16A 3p 6h

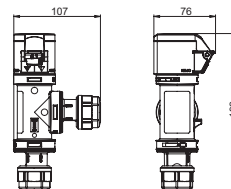
IP44 splashproof

IP44 **94325001**

IP67 watertight

IP67 **94326001**

pack.unit: 10



T-Connect

2-way connector with cable entry

Equipment:

- 1 cable entry
(terminal block max. 3x2,5mm²)
- 2 CEE-sockets 16A 3p 6h outlet

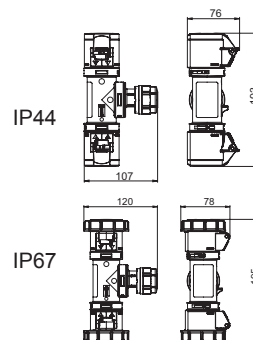
IP44 splashproof

IP44 **94325002**

IP67 watertight

IP67 **94326002**

pack.unit: 10



T-Connect

2-way connector with CEE-plug

Equipment:

- 1 CEE-plug 16A 3p 6h
- 2 CEE-sockets 16A 3p 6h outlet

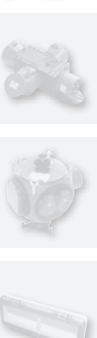
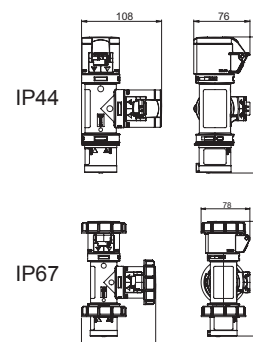
IP44 splashproof

IP44 **94325003**

IP67 watertight

IP67 **94326003**

pack.unit: 10



Event technology MIDNIGHT-SERIES

Compact distribution boxes Series St. Anton



- Plugs and sockets are black

Entry:

1 CEE-plug 16A 5p 400V

Outlet:

3 CEE-sockets 16A 5p 400V

9430052

1 CEE-socket 16A 5p 400V
2 safety sockets 16A 250V

9430053

3 CEE-sockets 16A 3p 230V

9430054

Wall distribution boxes series Salzburg

Dimensions: HxW = 370x298mm

Equipment:

1 CEE-socket 32A 5p 400V sw
1 CEE-socket 16A 5p 400V sw
2 safety sockets 16A 250V sw

- for wall-fastening
- solid rubber enclosure, with protective roof
- window up to max. 14 modules
- bottom of box and cover connected with joint
- ready wired for connection

1xM32 on top, 1xM32 from bottom

Protection:

1 MCB 32A 3p-C
1 MCB 16A 3p-C
2 MCBs 16A 1p-B
1 RCD 63/4/0,03A over all outlets

IP54 dust- and splashproof

92271649



Wall distribution boxes series Bruck

Dimensions: HxW = 370x370mm

Equipment:

1 CEE-socket 32A 5p 400V sw
2 CEE-sockets 16A 5p 400V sw
4 safety sockets 16A 250V sw

- for wall-fastening
- solid rubber enclosure, with protective roof
- window up to max. 18 modules
- bottom of box and cover connected with joint
- ready wired for connection

1xM32 on top, 1xM32 from bottom

Protection:

1 MCB 32A 3p-C
2 MCBs 16A 3p-C
4 MCBs 16A 1p-B
1 RCD 63/4/0,03A over all outlets

IP54 dust- and splashproof

92401543



Mobile distribution boxes series Spitz

Dimensions: HxWxD = 320x320x320mm

Equipment:

2 CEE-sockets 32A 5p 400V sw
2 CEE-sockets 16A 5p 400V sw
4 safety sockets 16A 250V sw

- portable, handy solid-rubber mobile box - stackable
- lifting hinged cover with 2 quick acting closures
- maximum safety – closed casing bottom with high ground clearance
- ready wired for connection

2m cable 5G6 with
CEE-plug 32A 5p 400V sw

Protection:

2 MCBs 16A 3p-C
4 MCBs 16A 1p-B
1 RCD 63/4/0,03A over all outlets

IP54 dust- and splashproof

94741367



Mobile distribution boxes series Steyregg

Dimensions: HxWxD = 79x430x129mm

Equipment:

2 CEE-sockets 16A 5p 400V sw
2 safety sockets 16A 250V sw

- portable, handy solid-rubber mobile box
- housing with carrying handle
- ready wired for connection

2m cable 5G4 with
CEE-plug 32A 5p 400V sw

Protection:

1 MCB 16A 3p-C
2 MCB 16A 1p-C

IP54 dust- and splashproof

9441480



Series M-SVE3 63/11-12/V2/2M/A/MS

Dimensions: HxWxD = 340x400x350mm

- shock-resistant, robust and mobile insulated thermoplastic box
- very lightweight and handy
- stackable
- resistant to weather and ageing

IP44 splashproof

Equipment:

- 1 CEE-socket 16A 5p 400V black
- 1 CEE-socket 32A 5p 400V black
- 12 sockets (DIN 49440) 16A 250V black

Connection cable 44 kVA

2m cable 5G10 with
CEE-plug 63A 5p 400V

Protection:

- 1 MCB 16A 3p-C
- 1 MCB 32A 3p-C
- 12 MCBs 16A 1p-C
- 2 RCDs 63/0,03A

853009286



Series M-SVE4 63/1-16/V17/G/E/A/MS

Dimensions: HxWxD = 340x560x350mm

- shock-resistant, robust and mobile insulated thermoplastic box
- very lightweight and handy
- stackable
- resistant to weather and ageing

IP44 splashproof

Equipment:

- 1 CEE-socket 16A 5p 400V black
- 16 sockets (DIN 49440) 16A 250V black

Connection cable 44 kVA

CEE-plug 63A 5p 400V
with cable loop in the entry

Protection:

- 1 MCB 16A 3p-C
- 16 RCD/MCB 16A 1p-C/0,03A
- 1 RCD 40/0,03A

854009285



Hinged windows IP54

- especially compact (robust) design, made of shock-resistant polycarbonate
- for distributor's construction, O.E.M's, panel builders etc.
- self-closing window
- size of hinged window suitable for 4, 6, 7, 8, 9, 10, 11, 12, 13, 14 and 18 modules
- angle of vee > 180°
- with integrated gasket for flange mounting
- integrated free position for lead seal
- color frame: black

IP54 splashproof

unit	size	p.unit	Cat.No.
4	92x97mm	30	9006504s
6	128x97mm	20	9006506s
7	139x97mm	15	9006507s
8	164x97mm	15	9006508s
9	181x97mm	10	9006509s
10	199x97mm	10	9006510s
11	217x97mm	10	9006511s
12	235x97mm	10	9006512s
13	253x97mm	10	9006513s
14	271x97mm	10	9006514s
18	343x97mm	10	9006518s



Hinged windows IP67

- especially compact (robust) design, made of shock-resistant polycarbonate
- for distributor's construction, O.E.M's, panel builders etc.
- sprung-loaded window with integrated knurled screws
- size of hinged window suitable for 2, 4, 5, 6, 7, 8, 9, 10, 12, 13, 18 modules
- with integrated gasket for flange mounting
- all metal parts corrosion-resistant
- color frame: black

IP67 watertight

unit	Maße	p.unit	Cat.No.
2	49x93mm	40	900602s
4	85x93mm	20	900604s
5	103x93mm	20	900605s
6	121x93mm	15	900606s
7	139x93mm	15	900607s
8	157x93mm	15	900608s
9	175x93mm	15	900609s
10	193x93mm	15	900610s
12	229x93mm	10	900612s
13	247x93mm	10	900613s
18	337x93mm	12	900618s



LED industry spotlight

LED High Power – new generation

Philips Fortimo / Lumileds Rebel / Dr. Fischer LED modules

Components are made of high quality semiconductor products, resulting in very low power dissipation and a secure reverse polarity and overload protection must be ensured.

The specially designed shape of the LED leads heat effectively from the chip and thus, a high luminous efficiency without reducing the service life. Also, the luminous flux is very small, so light that plans are expected to be maintenance factor of 0.9 to 0.95.



LED spotlights relevant standards

EN 60598

- 60598-1 general part
- Teil 2-4 portable lights
- Teil 2-5 spotlight
- RoHS and CE-conform

- Lights with restricted surface temperature

Economic benefits:

- low power consumption
- low heat generation
- alternative to halogen lamps
- long life
- no maintenance costs
- reduced operating costs (by about 60%)

EMV

- EN 55015, EN 61547, EN 61000 -3-2 or -3-3
- Photobiological safety EN 62471
- LED modules for incandescent lamps EN 62031
- Appliances and lamps EN 61347



Technical advantages:

- robust, shock and vibration resistant
- no delay
- consistent color reproduction
- not a hollow body which can implode
- Switching frequency of > 1 million
- no UV / IR radiation (heat)

1 Tripod 141000310 (on request)

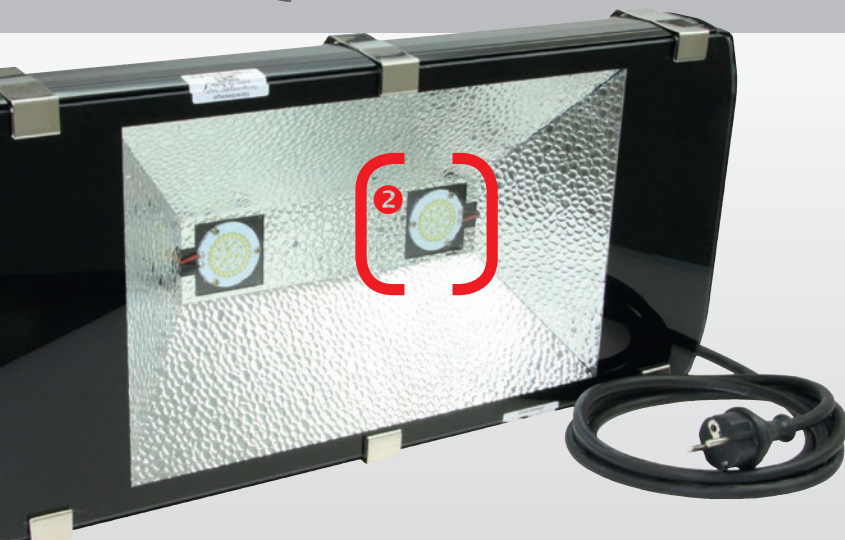
2 Tripod attachment (on request)

3 Philips Fortimo / Lumileds Rebel

4 LED ballast



LED LAMP 33W TO 270W



- Operating voltage: 220-240V or 24-42V
- Light color: 5.500 Kelvin
- Luminous flux: 2.500 to 19.000lm
- LED lamp: **Philips-Lumileds Rebel**
- Viewing angle: 120°
- Glass: 5mm safety glass
- Degree of protection: IP65
- Protection class: I
- Temperature: -30°C to +60°C
- Color rendering: >80%, class 1b

Note: The technical data correspond to the present state, which are continuously improved by the rapid technological advancement.

LED-spotlight FL100 30W

Design:

Operating voltage	220-240V
Power system	33W
LED-module	30W
Luminous flux	2,000 lm
Luminous color	5,500 Kelvin
Average life	40,000 h
Dimensions (WxHxD)	225x185x130 mm
Weight	2,5 kg

Material: Aluminium housing with metal bracket, aluminium reflector and safety glass
Application: Illumination of workplaces, boilers and tanks

Cat.No.	Description
44012085*	with cable 4m H07RN-F 3G1,5 and safety plug 2P+E 230V IP44 (dual earthing system)
44012085OZ*	without connection cable



LED-spotlight FL100 50W

Design:

Operating voltage	220-240V
Power system	55W
LED-module	50W
Luminous flux	3,000 lm
Luminous color	5,500 Kelvin
Average life	30,000 h
Dimensions (WxHxD)	295x245x160 mm
Weight	4,0 kg

Material: Aluminium housing with metal bracket, aluminium reflector and safety glass
Application: Illumination of workplaces, boilers and tanks

Cat.No.	Description
44013085*	with cable 4m H07RN-F 3G1,5 and safety plug 2P+E 230V IP44 (dual earthing system)
44013085OZ*	without connection cable



LED-spotlight FL100 70W

Design:

Operating voltage	220-240V
Power system	75W
LED-module	70W
Luminous flux	5,000 lm
Luminous color	5,500 Kelvin
Average life	30,000 h
Dimensions (WxHxD)	410x290x120 mm
Weight	6,5 kg

Material: Aluminium housing with metal bracket, aluminium reflector and safety glass
Application: Illumination of halls and industrial areas

Cat.No.	Description
44015085*	with cable 4m H07RN-F 3G1,5 and safety plug 2P+E 230V IP44 (dual earthing system)
44015085OZ*	without connection cable



LED-spotlight FL200 90W

Design:

Operating voltage	220-240V
Power system	100W
LED-module	90W
Luminous flux	8,000 lm
Luminous color	5,500 Kelvin
Average life	30,000 h
Dimensions (WxHxD)	393x285x93 mm
Weight	7,5 kg

Material: Aluminium housing with metal brackets, aluminium reflector and safety glass. Additional vent valve to prevent condensation.
Application: Illumination of large areas and buildings to a height of about 3-5m

Cat.No.	Description
44027560*	with cable 10m H07RN-F 3G1,5 and safety plug 2P+E 230V IP44 (dual earthing system)



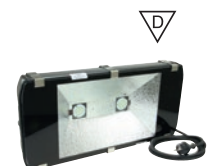
LED-spotlight FL500 150W

Design:

Operating voltage	220-240V
Power system	160W
LED-module	150W
Luminous flux	15,000 lm
Luminous color	5,500 Kelvin
Average life	30,000 h
Dimensions (WxHxD)	593x285x93 mm
Weight	12,0 kg

Material: Aluminium housing with metal brackets, aluminium reflector and safety glass. Additional vent valve to prevent condensation.
Application: Illumination of large areas and buildings to a height of about 4-6m

Cat.No.	Description
44051560*	with cable 10m H07RN-F 3G1,5 and safety plug 2P+E 230V IP44 (dual earthing system)



LED-spotlight FL510 250W

Design:

Operating voltage	220-240V
Power system	270W
LED-module	250W
Luminous flux	19,000 lm
Luminous color	5,500 Kelvin
Average life	30,000 h
Dimensions (WxHxD)	560x400x180 mm
Weight	15,0 kg

Material: Aluminium housing with metal brackets, aluminium reflector and safety glass. Additional vent valve to prevent condensation.
Application: Illumination of large areas and buildings to a height of about 5-10m

Cat.No.	Description
44051857120*	with cable 10m H07RN-F 3G1,5 and safety plug 2P+E 230V IP44 (dual earthing system)

