


PILA¹ Energy pillars

■ Energy pillars, made out of metal with integrated, closed distribution boxes and protection class II

■ Fields of application

- Industry and commerce
- Public places, parks, event locations
- Industrial buildings and halls
- Camping sites and marina
- and many more ...

■ Advantages

- Metal construction (stable, long lasting, robust)
- Simple mounting and installation
- **EPS** ENCLOSURE PROTECTION SYSTEM – electrical components are perfectly protected in a closed distribution box!
- Individual configuration (power, network, compressed air, water, ...)
- Pillar ready wired and tested.
-  protection class II
- Ingress protection: IP54



EPS
ENCLOSURE
PROTECTION
SYSTEM
IP54

PILA¹ Energy pillars – aluminium


■ Pillar: aluminium profile MS 300

- Aluminium profile (side-, front- and back wall)
- Top and bottom plate made out of machined aluminium
- Individual heights possible

Technical data pillar:

- Dimensions: (H x W x D) 1210/1330 x 300 x 175 mm
- Stand: 360 x 325 mm (fixing center 330 x 295 mm)
- High durable aluminium - seawater resistant
- Colour: silver anodised
- Other versions on request

Technical data distribution box (integrated):

- Thermoplastic enclosure PC/ABS
- Ready wired on main terminal
- Fuse window self closing
-  protection class II
- Ingress protection: IP54 (others in request)

EPS
ENCLOSURE
PROTECTION
SYSTEM
IP54



Height: H= 1330mm

Height: H= 1210mm



9080001



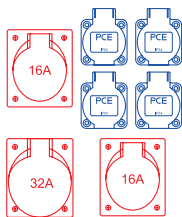
9080002



9080003

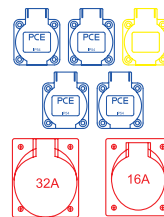


9080005



- 1 x CEE-socket 32A 5p 400V
- 2 x CEE-socket 16A 5p 400V
- 4 x safety socket 16A 250V
- 1 x MCB 32A 3p C
- 2 x MCB 16A 3p C
- 4 x MCB 16A 1p C
- 1 x RCD 63/4/0,03A
- 1 x M40 bottom

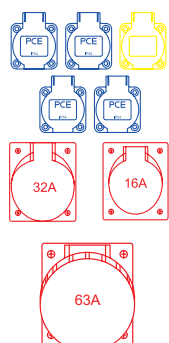
9080001



- 1 x CEE-socket 32A 5p 400V
- 1 x CEE-socket 16A 5p 400V
- 4 x safety socket 16A 250V
- 1 x CAT6 socket (double)
- 1 x MCB 32A 3p C
- 1 x MCB 16A 3p C
- 4 x MCB 16A 1p C
- 1 x RCD 63/4/0,03A

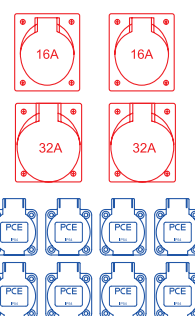
1 x M40 bottom, 1 x M16 bottom

9080002



- 1 x CEE-socket 63A 5p 400V
- 1 x CEE-socket 32A 5p 400V
- 1 x CEE-socket 16A 5p 400V
- 4 x safety socket 16A 250V
- 1 x CAT6 socket (double)
- 1 x MCB 63A 3p C
- 1 x MCB 32A 3p C
- 1 x MCB 16A 3p C
- 4 x MCB 16A 1p C
- 2 x RCD 63/4/0,03A
- 1 x M40 bottom, 1 x M16 bottom

9080003



- 2 x CEE-socket 32A 5p 400V
- 2 x CEE-socket 16A 5p 400V
- 8 x safety socket 16A 250V
- 2 x MCB 32A 3p C
- 2 x MCB 16A 3p C
- 4 x MCB 16A 1p C
- 2 x RCD 63/4/0,03A

1 x M40 bottom

9080005




■ Pillar: Steel sheet powder coated

- Steel sheet construction powder coated
- Front plate removable, anodized aluminium
- Individual configuration

Technical data pillar:

- Dimensions: (H x W x D) 750/1200 x 165 x 85 mm
- Stand: 250 x 150 mm
- Colour: Housing grey (RAL 7016 powder coated)
Topo cover red (RAL 3000 powder coated)
Front plate: aluminium silver anodized

Technical data distribution box (integrated):

- Rubber distribution box
- Ready wired on main terminal
- Fuse window self closing
-  protection class II
- Ingress protection: IP54 (others in request)



Height: H= 1200mm



9081001



9081002

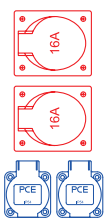


9081003

Height: H= 750mm

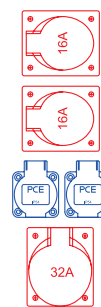


9081802



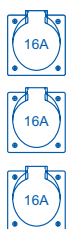
- 2 x CEE-socket 16A 5p 400V
- 2 x safety socket 16A 250V
- 1 x RCD 40/4/0,03A
- 1 x M25 bottom

9081001



- 1 x CEE-socket 32A 5p 400V
- 2 x CEE-socket 16A 5p 400V
- 2 x safety socket 16A 250V
- 1 x MCB 16A 3p C
- 2 x MCB 16A 1p C
- 1 x RCD 63/4/0,03A
- 1 x M32 bottom

9081002



- 3 x CEE-socket 16A 3p 230V
- 3 x RCBO 16A 1p+N 0,03A C
- 1 x M25 bottom

9081003



- 1 x Design CEE-socket 16A 5p 400V
- 2 x Design - safety socket 16A 250V
- Design-sockets lockable
- 1 x M25 bottom
- Protecton: IP44

9081802

PILA¹ Energy pillars

■ Pillar: Stainless steel or sheet metal powder coated

- Pillar made out of V2A stainless steel or steel sheet powder coated
- Individual heights possible

Technical data pillar:

- Dimensions: (H x W x D) 1200 x 248 x 107 mm
- Stand fixing center: 330 x 295 mm
- Other versions on request

Technical data distribution box (integrated):

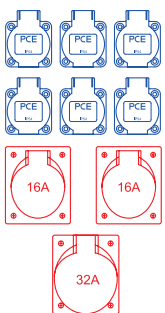
- Rubber distribution box
- Ready wired on main terminal
- Fuse window self closing
- protection class II
- Ingress protection: IP54 (others in request)



EPS
ENCLOSURE
PROTECTION
SYSTEM
IP54

Height: H= 1200mm

9082003 version: stainless steel V2A



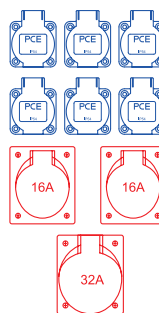
1 x CEE-socket 32A 5p 400V
2 x CEE-socket 16A 5p 400V
6 x safety socket 16A 250V

1 x MCB 32A 3p C
2 x MCB 16A 3p C
6 x MCB 16A 1p C
1 x RCD 63/4/0,03A

1 x M32 bottom

Version: stainless steel V2A

9082003



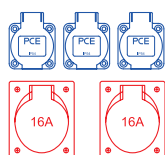
1 x CEE-socket 32A 5p 400V
2 x CEE-socket 16A 5p 400V
6 x safety socket 16A 250V

1 x MCB 32A 3p C
2 x MCB 16A 3p C
6 x MCB 16A 1p C
1 x RCD 63/4/0,03A

1 x M32 bottom

Version: steel sheet powder coated (RAL 7016)

9082001



2 x CEE-socket 16A 5p 400V
3 x safety socket 16A 250V

1 x MCB 16A 3p C
3 x MCB 16A 1p C
1 x RCD 40/4/0,03A

1 x M32 bottom

Version: steel sheet powder coated (RAL 7016)

9082002



MOSER SYSTEMELEKTRIK

Your partner for modern and sustainable connection technology in the range of indoor and outdoor

For more than 40 years MOSER is one of the leading companies in the range of underground systems and connection columns. According to continuous redevelopments the product range has been extended and comprises nowadays a complete high quality program of connection technology from the workplace in the office to the industry.

From 1967 to 1975 MOSER expanded its business field with electric installation and developed the first connection columns. In 1985 supply posts followed. This technique has been improved until 1988 so MOSER could present as the first company worldwide its retractable connection technology, which is suitable for the urban use and also for applications in the aviation industry in an outstanding way.

From 2013 Moser Systemelektrik GmbH is a company of the PCE Group and organizationally attributed to the MERZ GMBH as a sub company.

MERZ GMBH offers a wide product range with high quality in the range of mobile power distribution (especially building site main cabinets), test technology, sheet metal technology and low voltage switch gears. (more information under: www.merz-elektro.de)

The holding company PC Electric GmbH with its headquarter in St.Martin (Austria) is specialized in the production of industrial plugs, sockets with earth contact and plugs and furthermore offers a complete product range of distribution boxes made out of solid rubber and synthetic material. (more information under www.pcelectric.at)



Garden- and gate intercom columns



Garden supply tower MS10

The garden supply tower for outside comprising a closed aluminium profile with lid. A protective-conductor terminal with equipotential bonding is integrated for the electrical connection. The supply towers can be equipped with all common standard devices.

Technical data:

Dimension:: 100 x 50 x 300/500/1150 mm, IP44
Material, colour: aluminium profil, silver anodized

Example:	Cat.No.
MS10, 100x50x300, IP44, unequipped, incl. stand	70300196
MS10, 100x50x500, IP44, unequipped, incl. stand	70500197



Garden supply tower MS18

Supply column for outside areas, comprising a closed rectangular profile and aluminium intermediate cover. Integrated equipotential bonding terminal with protection conductor for the electrical connection. The column is prepared at the factory for equipping on one side with all standard equipment programs.

Option: Light (LED lid for orientation, or regular surrounding light), water supply

Technical data:

Technical data: 180 x 100 x 500/800/1150/1400 mm, IP44
Material, colour: aluminium profil, silver anodized

Example:	Cat.No.
MS18, 180x100x1400, IP44, unequipped, incl. stand	61400135
MS18, 180x100x1400, IP44, unequipped, incl. stand and LED lid	71400139



Garden supply tower MSR12

Supply column for outside areas, comprising a closed round profile of aluminium with a flat side for equipping, including round segment profile for covering the section of the tower that is not equipped, 2 plastic segment covers, aluminium intermediate cover, incl. equipotential bonding terminal with protection conductor. The column is prepared at the factory for equipping on one side with all standard equipment programs. (Frame width max. 85 mm)

Optionen: Light (LED lid for orientation, or regular surrounding light)

Technical data:

Technical data: Ø 120 x 500/800/1150 mm, IP44
Material, colour: aluminium profil, silver anodized

Example:	Cat.No.
MSR12, Ø120x800, IP44, unequipped, incl. stand and LED lid	80800072



Garden supply tower MSR20

The MSR20 gate intercom column comprises an anodised aluminium profile, cover and footplate. The grid plate is prepared to mount standard switches and sockets, as well as intercom systems.

Optionen: Light (LED lid for orientation, or regular surrounding light)

Technical data:

Technical data: Ø 200 x 500/800/1150/1400 mm, IP44
Material, colour: aluminium profil, silver anodized

Example:	Cat.No.
MSR20, Ø200x1400, IP44, unequipped, incl. stand	51400159
MSR20, Ø200x1400, IP44, unequipped, incl. stand and LED lid	61400163



Office connection technology

Floor- office columns MS10 / MSR12 / MS15 / MS240



MS10: Connection column for offices comprises a closed, anodised aluminium profile with cover and equipotential bonding with protectiveconductor terminal. The connection column for offices can be equipped on one side with all standard device ranges.

MSR12: Connection column for offices comprises a closed round aluminium profile with flat surface for equipping, including round segment profile for covering the non-equipped part of the column, 2 segment covers, equipotential bonding terminal, without base plate. The column can be equipped on one side with all standard device ranges.

MS15: Connection column for offices comprises a closed, anodised aluminium profile with cover and equipotential bonding with protective-conductor terminal. It can be equipped on one or both sides with all standard devices, including high and low voltage devices. A separating rail is necessary for separating various electric circuits inside a column.

MS240: Connection column for offices for equipping with standard devices, instabus devices, selective back-up, distribution. The MS240 offers sufficient manoeuvring space for functional bending radii and strain relief for coaxial cables, optical waveguides, stranded conductors (twisted) and high voltage lines. MS240 comprises a flush-flitted base plate, profiled side panels, screw-on cover, separating rail including a C-rail and a top hat rail for mounting terminals and strain relief, equipotential bonding terminal, 2 device plates.

Mounting possibilities: Directly on the floor with a base plate. MS10, MSR12 and MS15 can be mounted with an optional integrated flush floor socket to be removable and flexible.

Technical Data:

Dimensions:	MS10: 100 x 50 x 300/500 mm	IP-rating:	IPX0
	MSR12: Ø120 x 300/500 mm	Material:	aluminium
	MS15: 150 x 100 x 300/500 mm	Colour:	silver anodized
	MS240: 240 x 175 x 310/410/510 mm		

Office ceiling supply columns MSD10 / MSDR12

Ceiling connection column for offices for vertical connection technology, for supplying power from either the ceiling or the floor, comprising a closed aluminium profile prepared for equipping one side with all standard device ranges including high and low voltage devices.

The column is divided into 6 positions. Each position can be equipped with the required drilling unit. A separating rail can be provided for separating various electric circuits inside the column.(MSD10).

Technical data:

Dimension:	MS10: 100 x 50 x 2700 mm
	MSDR12: Ø120 x 2700 mm
IP-rating:	IPX0
Material:	aluminium
Colour:	silver anodized



Individual equipment and heights on request!

Industrial supply columns

Industrial floor column MS15

MS15 connection column for industry for vertical connection technology comprising closed aluminium profile with cover and equipotential bonding with protective-conductor terminal, distributor (with 6 units), circuit-breaker and built-in devices.

The MS15 connection column for industry can be mounted directly on the floor using the base plate. The mounting set comprising ground socket and base plate is suitable for mounting on screed flooring, on double floors or for connecting to underground systems. Either the square or round ground socket can be used. The MS15 industrial column is also deliverable with a modular connector. Hinged frames, modules and intermediate bearings for modular connector have to be ordered separately.

Equipment:

One or two sides with all standard device ranges, including high and low voltage devices, industrial sockets and CEE-surface-mounted sockets, straight up to 5 x 32 A and on 3 sides (additional, e.g. compressed air)

Technical data:

Dimensions: 150 x 100 x 500/660/800/1000 mm, IP44
 Material, colour: aluminium profil, silver anodized

Example:	Cat.No.
MS15, window 6 units, 2x safety sockets protected with 2xMCB 16A 1p C, 1xCEE 16A 5p 400V protected with 1xMCB 16A 3p C, 1x compressed air connector, 150x100x670 mm, incl. stand	60667031
MS15, window 6 units, 2x safety sockets protected with 2xMCB 16A 1p C, 1xCEE 16A 5p 400V protected with 1xMCB 16A 3p C, 1xCEE 32A 5p 400V protected with 1xMCB 32A 3p C, 1x compressed air connector, 150x100x1000 mm, incl. stand	60997032



Industrial ceiling supply columns MSD15 / MSDI165+

MSD15: ceiling connection column for industry for vertical connection technology, for supplying power from either the ceiling or the floor, comprising closed aluminium profile prepared for equipping one 1, 2 or 4 sides with all standard device ranges including high and low voltage devices and emergency off-button or CEE surface-mounted sockets up to 63 A and distribution fuse board up to max. 6 partitions. The column is divided into 6 positions for equipping purposes. Each position can be equipped with the required drilling unit. For columns that require equipping on 2 sides, please specify the required bore-holes on the 2nd side separately. A separating rail is necessary for separating various electric circuits inside a column.

MSDI165+: MSDI165+ ceiling connection column for industry for vertical connection technology, for supplying energy from either the ceiling or the floor comprising:

- closed extruded aluminium profile, especially for the electrical connections.
- side flaps for e.g. compressed air, vacuum connections, suction lines, water and other media if technically possible.
- Column cover and base plate.

Possible equipment:

On 1, 2 and 4 sides with all standard device ranges including high and low voltage devices as well as an emergency-off button or CEE-surface-mounted sockets up to 63 A and distribution fuse board up to max. 8 partitions per distributor. Compressed air units, vacuum connections, suction lines, water and other media if technically possible.

Technical data:

Dimensions: MSD15: 150 x 100 x 2700 mm
 MSDI165+: 295 x 120 x 3000 mm
 IP-rating : IPX5
 Material: aluminium
 Colour: silver anodized



Individual equipment and heights on request!



Clean room technology



Cleanrooms and laboratories use many technical devices and modern technology which have not been used a few years ago. It is usually difficult to enable the supply of the working places in an adequate way afterward. This comprises not only the current supply, but rather the supply of air pressure or data sockets.

The MOSER connection columns made out of anodized aluminum enable an extremely efficient and cost-saving solution. Furthermore these columns convince with their outstanding features. Especially the application in the production of microelectronics is an approved method as the supply of electrical connection for big production areas and for single working places is requested. As simple wall ducts are not advisable, a special solution for this problem is long-needed necessary. Therefore we have certified the existing connection columns for the application in cleanrooms and convince now as a competent partner in the professional fitting of cleanrooms. According to ISO 14644-1 the possible application in cleanrooms (air purity class 1) has been confirmed with the IPA-certificate by the Fraunhofer Institute.

As they can be cleaned and disinfected without problems, they fulfill all requirements of a hygienic design. Furthermore the ceiling suspension supports a low turbulence displacement flow and enables an application in Laminar-Flow-Units.



Fraunhofer
TESTED[®]
DEVICE
 Moser Systemelektrik
 MSD10
 Report No. MO 0912-499

DUPLIKAT

Qualifizierungskunde
 Dieses wird bescheinigt, dass die oben genannte Einheit, aufwandsfrei auftrag der Firma
Moser Systemelektrik
 Filialweg 1
 70341 Schwöbeld
 ein Fraunhofer-Zertifikat TESTED DEVICE Nummer MO 0912-499
 eingereicht wurde.
 Die Einbaueigenschaften sind geprüft, keine Normen des
 Laboranforderkriteriums 1 gemäß ISO 14644-1 eingehalten
 werden.
 Standardanforderungen sowie die Spezifikation der Forderung
 sind erfüllt. Die Einheit ist für die Verwendung in
 sauberen Umgebungen geeignet.
 Die Gültigkeit dieser Bescheinigung beschränkt sich ausschließlich auf
 das genannte Produkt in der oben genannten Form.
 Weitere Informationen hierzu bei Qualitätsmanagement.
 Stuttgart, den 15. Dezember 2009
 [Signature]



Retractable connection technology



Underground connection: TerraMo

Modern underground system for power supply in- and outdoors. The field of application ranges from shopping malls, offices, congress centers, fair grounds as well as market places, private homes and parking lots.

Technical data:

IP-rating:	IP44
Total weight:	11 kg
Dimensions (HxWxD):	303x390x310 mm
Install. depth, extendible height:	303 mm, 136 mm
Load capacity of cover:	support weight of car
Heater:	20 W switch cabinet heater
Lifting mechanism:	gas pressure spring
Drainage connection:	1 DN 40



Example:	Best.Nr.
TerraMo, 2x safety socket 16A 250V	502010001
TerraMo, window 4 units, 1xCEE 16A 5p 400V, 2x safety socket, RCBO 16/0,03A 4p-C	502010005

Underground connection: series SE

Retractable, freely accessible for vehicles, electrical connections and distribution columns for open areas and halls for groundflush installation in compliance with VDE regulations, comprising:

Concrete pit with integrated drainage, cable feed-throughs and cable terminal boxes, corrosion-proof aluminium pit insert, supply tower with pit cover of cast aluminium suitable for paving, electrical device modules and hand crank.

Options: Water supply or other energy sources

Technical data: (general)

IP-rating:	IP44 (IP67)
Protection degree:	Earth conductor, protection class 1
Rated power:	up to 130 kW
Load capacity of cover:	up to 40 ton point load

Please ask for detailed technical documentation!



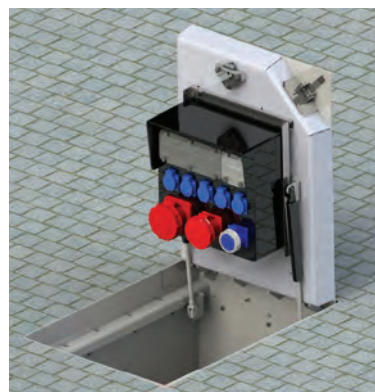
Underground connection with lid: series SEK

The new Moser underground connection with hinged lid made out of stainless steel are the perfect supply possibility for areas in- and outdoors. Once the lid is closed, the unit is almost invisible and protected against vandalism. The integrated full rubber distribution box can be equipped individually. The flexible use of space and the invisible storage of power supply, even in small areas, fit perfectly in every townscape.

Options: Cable exit (lid can stay closed during operation)
Water supply or other energy sources

Technical data: (general)

IP-rating: (distribution box)	IP54 (others on request)
Load capacity of lid:	up to 40 tons



Individual equipment and heights on request!

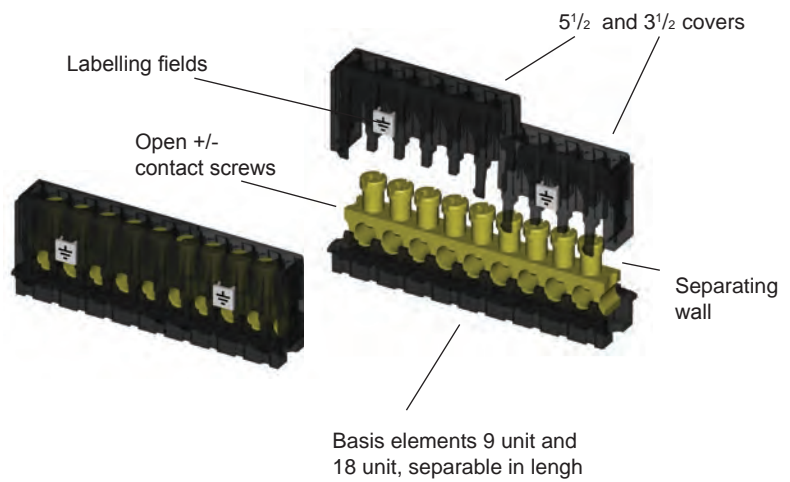
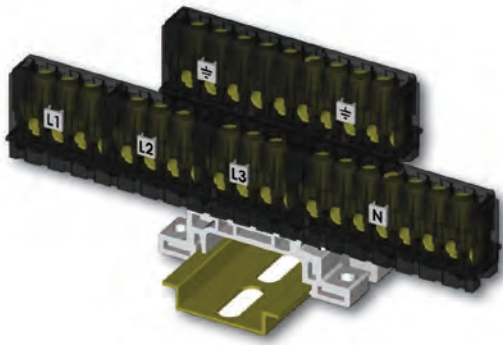


Vario Connector – variable connector block

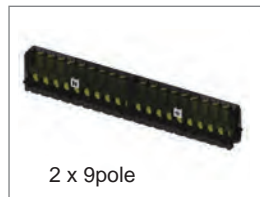
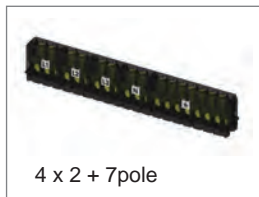
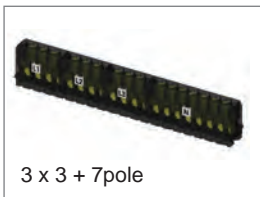
For use in distribution boxes and cabinets, applicable as connecting terminal and intermediate terminal.

Advantages:

- modular construction
- connection of various potentials
- variable fixing possibilities
- EN 60998-2-1
- connection to 16mm²
- isolation voltage 450V
- IP20

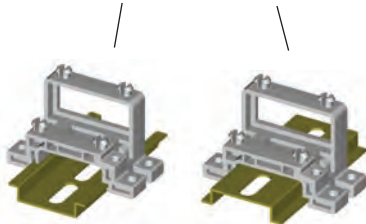


Examples of application:



Mounting possibilities:

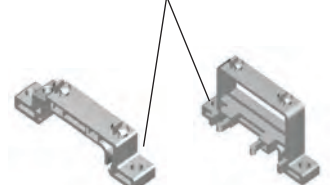
Receptors for DIN-rail 35mm
above or below



Cross- or length-wise assembly on DIN rail 35mm



Screwable



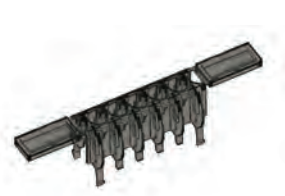
Vario Connector overview

Cover

packaging unit: 50



Terminal VC Cover 3.5
667235-50



Terminal VC Cover 5.5
667255-50



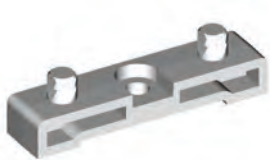
Terminal VC Basis 9
667109-50



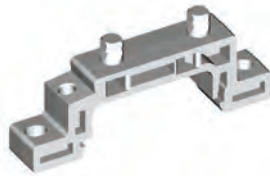
Terminal VC Basis 19
667119-50

Holder

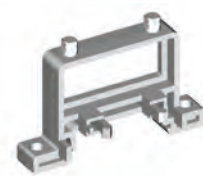
packaging unit: 50



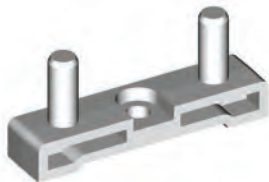
Terminal VC Holder Snap 7
667307-50



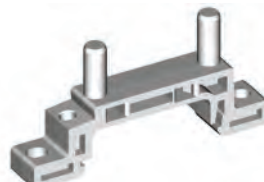
Terminal VC Holder Snap 16
667316-50
(screw 3,0x10) for DIN-rail
fixing 201803-1000



Terminal VC Holder Snap 34
667334-50



Terminal VC Holder Pin 7
667407-50



Terminal VC Holder Pin 16
667416-50
(screw 3,0x10) for DIN-rail
fixing 201803-1000



Terminal VC Holder Pin 34
667434-50

Bar Rail

packaging unit: 20



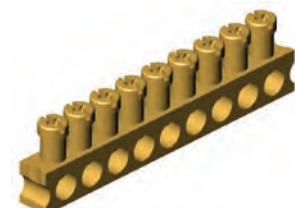
Terminal VC Bar Rail 2p
171402-20



Terminal VC Bar Rail 3p
171403-20



Terminal VC Bar Rail 6p
171406-20



Terminal VC Bar Rail 9p
171409-20

Dekafix

packaging unit: 500



Terminal Dekafix 5 neutral
0473361044-500



Terminal Dekafix 5 GS N
0132961034-500



Terminal Dekafix 5 GS
0157261203-500

Cat. No.



Vario Connector overview



Terminal VC complete 1x3p

667109-1/3

Pack. unit: 200



Terminal VC complete 1x6p

667109-1/6

Pack. unit: 200



Terminal VC complete 1x9p

667109-1/9

Pack. unit: 200



Terminal VC complete 2x3p

667109-2/3

Pack. unit: 200



Terminal VC complete 3x2p

667109-3/2

Pack. unit: 200



Terminal VC complete 1x6p

667119-1/6

Pack. unit: 200



Terminal VC complete 2x6p

667119-2/6

Pack. unit: 200



Terminal VC complete 2x9p

667119-2/9

Pack. unit: 200



Terminal VC complete 3x2p

667119-3/2

Pack. unit: 200



Terminal VC complete 3x3p

667119-3/3

Pack. unit: 200



Terminal VC complete 5x2p

667119-5/2

Pack. unit: 200

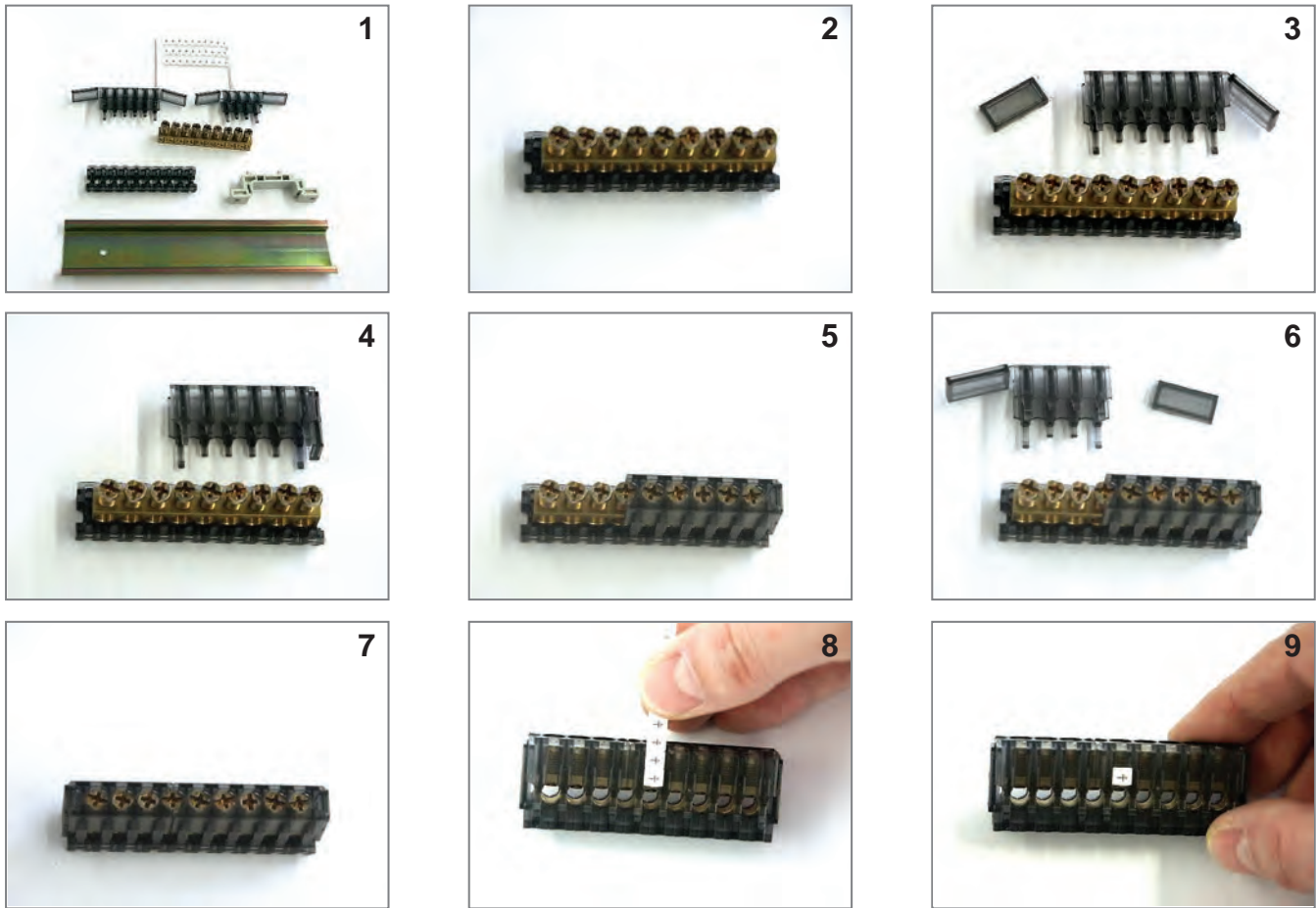


Terminal VC complete 5x3p

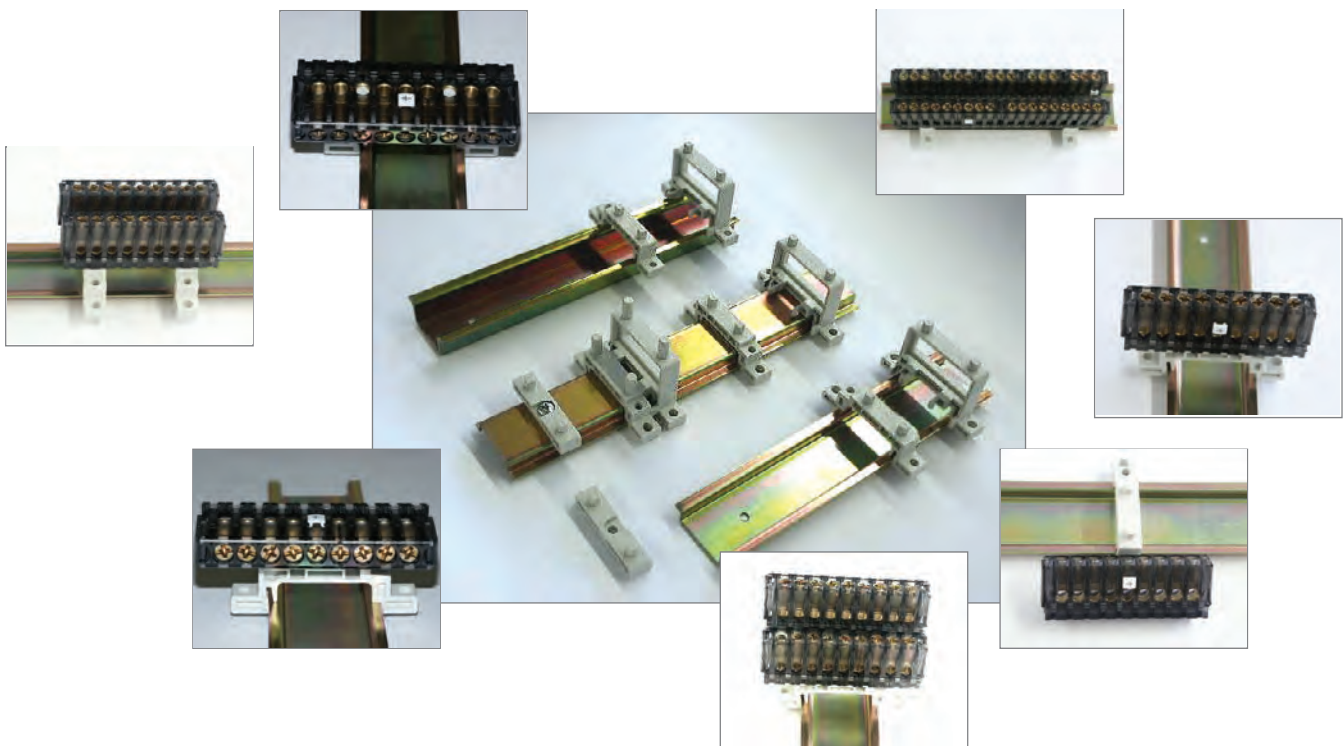
667119-5/3

Pack. unit: 200

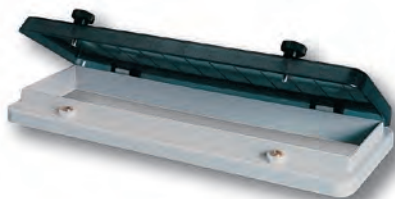
Vario Connector example with basis 9



Vario Connector examples

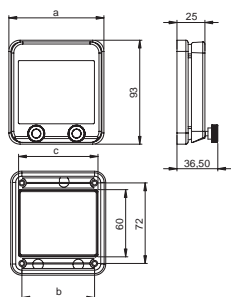


Hinged windows – fuse window IP66/67



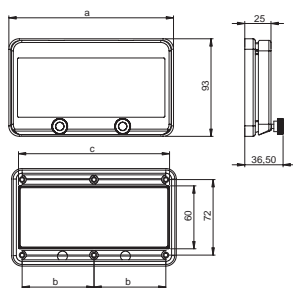
Technical characteristics:

- especially compact (robust) design, made of shock-resistant polycarbonate
- for **distributor's construction, O.E.M's, panel builders, etc.**
- sprung-loaded window with integrated knurled screws
- size of hinged window suitable for **2, 4, 5, 6, 8, 10, 13, 18 modules** (17,5mm each)
- **intermediate sizes on request!**
- mounting frame made of shock-resistant polycarbonate with integrated gasket for flange mounting
- all metal parts corrosion-resistant
- IP66/67 watertight



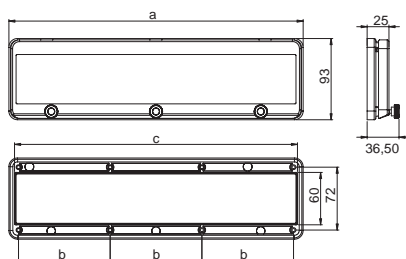
Hinged window 2 / 4 modules

	a [mm]	b [mm]	c [mm]	Weight [g]	pack.unit	Cat.No.
2 Modules	49	27	36	51	40	900602
4 Modules	85	65	72	80	20	900604



Hinged window 5 / 6 / 7 / 8 / 9 / 10 / 12 / 13 modules

	a [mm]	b [mm]	c [mm]	Weight [g]	pack.unit	Cat.No.
5 Modules	103	41,5	90	90	20	900605
6 Modules	121	50,5	108	102	15	900606
7 Modules	139	59,5	126	114	15	900607
8 Modules	157	68,5	144	126	15	900608
9 Modules	175	77,5	162	133	15	900609
10 Modules	193	86,5	180	145	15	900610
12 Modules	229	104,5	216	168	10	900612
13 Modules	247	113,5	234	180	10	900613

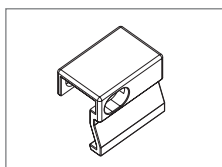


Hinged window 18 modules

	a [mm]	b [mm]	c [mm]	Weight [g]	pack.unit	Cat.No.
18 modules	337	105	324	245	12	900618

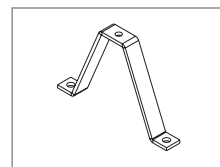
Accessories for IP66/67:

Locking- and lead-sealing device with padlock (40 mm)



ts9000g

Mounting clamp for DIN-rail H=53 mm



19892

Hinged windows – fuse window IP54

Technical data:

- especially compact (robust) design, made of shock-resistant polycarbonate
- for **distributor's construction, O.E.M's panel builders**, etc.
- self-closing window
- size of hinged window suitable for **4, 6, 8, 9, 10, 11, 12, 13, 14, 18 modules** (17,5mm each)
- bearing by means of double hinges
- **angle of vee > 180°**
- mounting frame made of shock-resistant polycarbonate with integrated gasket for flange mounting
- all metal parts corrosion-resistant
- transport and installation protection of the window with peel back foil
- integrated free position for lead seal
- window holder included
- Protection degree IP54 in vertical position
- Protection degree IP44 in horizontal position

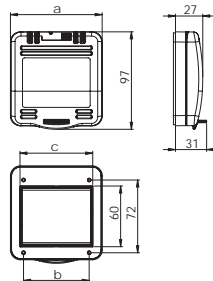


window handle **ti0207**



Hinged window 4 modules

	a [mm]	b [mm]	c [mm]	Weight [g]	pack.unit	Cat.No.
4 modules	92	65	72	97	30	9006504



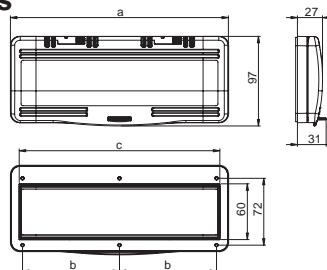
Delivery: incl. window holder (standard colour: black)
Also possible to order separately



ti0007s

Hinged window 6 / 7 / 8 / 9 / 10 / 11 / 12 modules

	a [mm]	b [mm]	c [mm]	Weight [g]	pack.unit	Cat.No.
6 modules	128	51	108	127	20	9006506
7 modules	139	59,5	126	146	15	9006507
8 modules	164	69	144	155	15	9006508
9 modules	182	78	162	166	15	9006509
10 modules	200	87	180	181	10	9006510
11 modules	218	96	198	198	10	9006511
12 modules	236	105	216	207	10	9006512



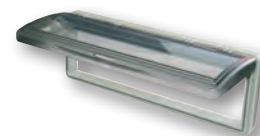
Examples of use for window holder:



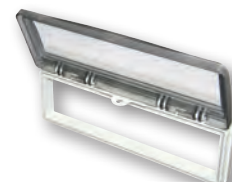
for fit-up aid



receptacle - padlock



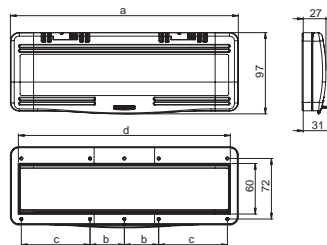
window holder for service works 90°



window holder for service works 180°

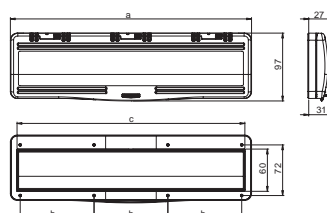
Hinged window 13 / 14 modules

	a [mm]	b [mm]	c [mm]	d [mm]	Weight [g]	pack.unit	Cat.No.
13 modules	253	41	73	233	223	10	9006513
14 modules	272	41	82	252	232	10	9006514



Hinged window 18 modules

	a [mm]	b [mm]	c [mm]	Weight [g]	pack.unit	Cat.No.
18 modules	344	105	324	299	10	9006518



Index by product catalog number

Cat.No.	Page	Cat.no.	Page	Cat.No.	Page	Cat.No.	Page	Cat.No.	Page	Cat.No.	Page
00200	173	0172-6v	129	025-7	21	044-7	23	0832-4v	117	1050-0bw	153
013-10	21	0172-7v	129	025-9	21	044-9	23	083-2v	117	1050-0ss	203
013-2	21	0172-9v	129	025-9TT	21	045-10	23	083-3v	117	1050-0ssw	203
0132-10	21	017-4v	129	0272-4v	129	045-2	23	083-4v	117	105-0b	151
0132-2	21	017-6v	129	0272-6v	129	045-4	23	092-10v	117	105-0bc	151
0132-4	21	017-7v	129	0272-7v	129	045-6	23	092-11v	117	105-0bs	151
0132-4TT	21	017-9v	129	0272-9v	129	045-6xs	197	092-12v	117	105-0bsc	151
0132-6	21	023-10	21	027-4v	129	045-7	23	0922-10v	117	105-0bw	153
0132-6TT	21	023-2	21	027-6v	129	045-9	23	0922-11v	117	105-7b	151
0132-7	21	0232-10	21	027-7v	129	0473361044-500	301	0922-12v	117	105-7bc	151
0132-9	21	0232-2	21	027-9v	129	05018	173	0922-2v	117	105-7bs	151
0132961034-500	301	0232-4	21	02958	173	05021	173	0922-3v	117	105-7bsc	151
0132-9TT	21	0232-4TT	21	02974	173	05034	173	0922-4v	117	105-7bw	153
013-4	21	0232-6	21	02980	173	05040	173	092-2v	117	10584-0wsc	151
013-4TT	21	0232-6TT	21	033-10	23	0511-s	169	092-3v	117	105-8b	151
013-6	21	0232-7	21	0331-10	23	0512-s	169	092-4v	117	105-8bc	151
013-6	142	0232-9	21	0331-2	23	05148	173	093-10v	117	105-8bs	151
013-6TT	21	0232-9TT	21	0331-4	23	05164	173	093-11v	117	105-8bsc	151
013-6TTx	197	023-4	21	0331-6	23	05177	173	093-12v	117	105-8bw	153
013-6x	197	023-4TT	21	0331-7	23	05180	173	0932-10v	117	106-0	159
013-7	21	023-6	21	0331-9	23	0521-s	169	0932-11v	117	106-0g	159
013-9	21	023-6TT	21	033-2	23	0522-s	169	0932-12v	117	108-0b	155
013-9TT	21	023-6TTx	197	033-4	23	0531-s	169	0932-2v	117	108-0bc	155
014-10	21	023-6x	197	033-6	23	0532-s	169	0932-3v	117	108-7b	155
014-2	21	023-7	21	033-6xs	197	05622-s	176	0932-4v	117	108-7bc	155
0142-10	21	023-9	21	033-7	23	05622-ss	204	093-2v	117	108-8b	155
0142-2	21	023-9TT	21	033-9	23	05811-s	169	093-3v	117	108-8bc	155
0142-4	21	024-10	21	034-10	23	05812-s	169	093-4v	117	109-0b	151
0142-4TT	21	024-2	21	0341-10	23	05821-s	169	1013-0b	157	109-0bc	151
0142-6	21	0242-10	21	0341-2	23	05822-s	169	1020-0s	157	109-0bw	153
0142-6TT	21	0242-2	21	0341-4	23	05831-s	169	1020-0s	203	109-7b	151
0142-7	21	0242-3v	138	0341-6	23	05832-s	169	1020-5s	157	109-7bc	151
0142-9	21	0242-4	21	0341-7	23	0622v	117	1020-5s	203	109-7bw	153
0142-9TT	21	0242-4TT	21	0341-9	23	062v	117	1023011	193	109-8b	151
014-4	21	0242-6	21	034-2	23	0632v	117	1023012	193	109-8bc	151
014-4TT	21	0242-6TT	21	034-4	23	063v	117	1023-0bs	157	109-8bw	153
014-6	21	0242-7	21	034-6	23	0722v	117	1025-0r	157	113-10	59
014-6TT	21	0242-9	21	034-6xs	197	072v	117	1030-0b	157	113-10k	59
014-6TTx	197	0242-9TT	21	034-7	23	0732v	117	1030-0s	157	113-2	59
014-6x	197	024-4	21	034-9	23	073v	117	1040-0b	155	1132-10	59
014-7	21	024-4TT	21	035-10	23	082-10v	117	1040-0b	281	1132-2	59
014-9	21	024-6	21	0351-10	23	082-11v	117	1040-0bc	155	1132-4	59
014-9TT	21	024-6TT	21	0351-2	23	082-12v	117	1040-0bs	155	1132-6	59
015-10	21	024-6TTx	197	0351-4	23	0822-10v	117	1040-0bs	281	1132-7	59
015-2	21	024-6x	197	0351-6	23	0822-11v	117	1040-0bsc	155	1132-9	59
0152-10	21	024-7	21	0351-7	23	0822-12v	117	1040-0sc	203	113-2k	59
0152-2	21	024-9	21	0351-9	23	0822-2v	117	104-0b	155	113-4	59
0152-4	21	024-9TT	21	035-2	23	0822-3v	117	104-0bc	155	113-4k	59
0152-4TT	21	025-10	21	035-4	23	08224	173	104-0bs	155	113-4TT	59
0152-6	21	025-2	21	035-6	23	0822-4v	117	104-0bsc	155	113-6	59
0152-6TT	21	0252-10	21	035-6xs	197	082-2v	117	104-7b	155	113-6k	59
0152-7	21	0252-2	21	035-7	23	082-3v	117	104-7bc	155	113-6TT	59
0152-9	21	0252-4	21	035-9	23	082-4v	117	104-7bs	155	113-7	59
0152-9TT	21	0252-4TT	21	043-10	23	08253	173	104-7bsc	155	113-7k	59
015-4	21	0252-6	21	043-2	23	08266	173	10484-0wsc	155	113-9	59
015-4TT	21	0252-6TT	21	043-4	23	08282	173	104-8b	155	113-9k	59
015-6	21	0252-7	21	043-6	23	08295	173	104-8bc	155	113-9TT	59
015-6TT	21	0252-9	21	043-6xs	197	083-10v	117	104-8bs	155	114-10	59
015-6TTx	197	0252-9TT	21	043-7	23	083-11v	117	104-8bsc	155	114-10k	59
015-6x	197	025-4	21	043-9	23	083-12v	117	1050-0b	151	114-2	59
015-7	21	025-4TT	21	044-10	23	0832-10v	117	1050-0b	281	1142-10	59
0157261203-500	301	025-6	21	044-2	23	0832-11v	117	1050-0bc	151	1142-2	59
015-9	21	025-6TT	21	044-4	23	0832-12v	117	1050-0bs	151	1142-4	59
015-9TT	21	025-6TTx	197	044-6	23	0832-2v	117	1050-0bs	281	1142-6	59
0172-4v	129	025-6x	197	044-6xs	197	0832-3v	117	1050-0bsc	151	1142-7	59

Index by product catalog number

Cat.No.	Page	Cat.No.	Page	Cat.No.	Page	Cat.No.	Page	Cat.No.	Page	Cat.No.	Page
1142-9	59	124-2	59	134-7	63	171409-20	301	20342-8b	165	2152-7	53
114-2k	59	1242-10	59	1347-10	63	1722v	119	20342-8bc	165	2152-9	53
114-4	59	1242-2	59	1347-2	63	172v	119	20351-8b	165	2152-9TT	53
114-4k	59	1242-3v	138	1347-4	63	1732v	119	20351-8bc	165	215-4	53
114-4TT	59	1242-4	59	1347-6	63	173v	119	20351-9b	165	215-4TT	53
114-6	59	1242-6	59	1347-7	63	182-10v	119	20351-9bc	165	215-6	53
114-6k	59	1242-7	59	1347-9	63	182-11v	119	20352-8b	165	215-6TT	53
114-6TT	59	1242-9	59	134-9	63	182-12v	119	20352-8bc	165	215-6TTx	199
114-7	59	124-2k	59	135-10	63	1822-10v	119	210316	181	215-6x	199
114-7k	59	124-4	59	135-2	63	1822-11v	119	210317	181	215-7	53
114-9	59	124-4k	59	135-4	63	1822-12v	119	210318	181	215-9	53
114-9k	59	124-4TT	59	135-6	63	1822-2v	119	210319	181	215-9TT	53
114-9TT	59	124-6	59	135-7	63	1822-3v	119	210336	181	2172-4v	133
115-10	59	124-6k	59	1357-10	63	1822-4v	119	210337	181	2172-6v	133
115-10k	59	124-6TT	59	1357-2	63	182-2v	119	210338	181	2172-7v	133
115-2	59	124-7	59	1357-4	63	182-3v	119	210339	181	2172-9v	133
1152-10	59	124-7k	59	1357-6	63	182-4v	119	213-10	53	217-4v	133
1152-2	59	124-9	59	1357-7	63	183-10v	119	213-2	53	217-6v	133
1152-4	59	124-9k	59	1357-9	63	183-11v	119	2132-10	53	217-7v	133
1152-6	59	124-9TT	59	135-9	63	183-12v	119	2132-2	53	217-9v	133
1152-7	59	125-10	59	143-10	63	1832-10v	119	2132-4	53	223-10	53
1152-9	59	125-10k	59	143-2	63	1832-11v	119	2132-4TT	53	223-2	53
115-2k	59	125-2	59	143-4	63	1832-12v	119	2132-6	53	2232-10	53
115-4	59	1252-10	59	143-6	63	1832-2v	119	2132-6TT	53	2232-2	53
115-4k	59	1252-2	59	143-7	63	1832-3v	119	2132-7	53	2232-4	53
115-4TT	59	1252-4	59	143-9	63	1832-4v	119	2132-9	53	2232-4TT	53
115-6	59	1252-6	59	144-10	63	183-2v	119	2132-9TT	53	2232-6TT	53
115-6k	59	1252-7	59	144-2	63	183-3v	119	213-4	53	2232-6TTx	53
115-6TT	59	1252-9	59	144-4	63	183-4v	119	213-4TT	53	2232-7	53
115-7	59	125-2k	59	144-6	63	192-10v	119	213-6	142	2232-9	53
115-7k	59	125-4	59	144-7	63	192-11v	119	213-6	53	2232-9TT	53
115-9	59	125-4k	59	144-9	63	192-12v	119	213-6TT	53	223-4	53
115-9k	59	125-4TT	59	145-10	63	1922-10v	119	213-6TTx	199	223-4TT	53
115-9TT	59	125-6	59	145-2	63	1922-11v	119	213-6x	199	223-6	53
1172-4v	135	125-6k	59	145-4	63	1922-12v	119	213-7	53	223-6TT	53
1172-6v	135	125-6TT	59	145-6	63	1922-2v	119	213-9	53	223-6TTx	199
1172-7v	135	125-7	59	145-7	63	1922-3v	119	213-9TT	53	223-6x	199
1172-9v	135	125-7k	59	145-9	63	1922-4v	119	214-10	53	223-7	53
117-4v	135	125-9	59	1518000	281	192-2v	119	214-2	53	223-9	53
117-6v	135	125-9k	59	1518010	281	192-3v	119	2142-10	53	223-9TT	53
117-7v	135	125-9TT	59	1518020	281	192-4v	119	2142-2	53	224-10	53
117-9v	135	1272-4v	135	1518030	281	193-10v	119	2142-4	53	224-2	53
123-10	59	1272-6v	135	1518040	281	193-11v	119	2142-4TT	53	2242-10	53
123-10k	59	1272-7v	135	1518045	281	193-12v	119	2142-6	53	2242-2	53
123-2	59	1272-9v	135	1518062	280	1932-10v	119	2142-6TT	53	2242-3v	138
1232-10	59	127-4v	135	1518063	280	1932-11v	119	2142-7	53	2242-4	53
1232-2	59	127-6v	135	1518082	280	1932-12v	119	2142-9	53	2242-4TT	53
1232-4	59	127-7v	135	1518083	280	1932-2v	119	2142-9TT	53	2242-6	53
1232-6	59	127-9v	135	1518105	281	1932-3v	119	214-4	53	2242-6TT	53
1232-7	59	133-10	63	1518132	280	1932-4v	119	214-4TT	53	2242-7	53
1232-9	59	133-2	63	1518133	280	193-2v	119	214-6	53	2242-9	53
123-2k	59	133-4	63	1518134	281	193-3v	119	214-6TT	53	2242-9TT	53
123-4	59	133-6	63	1518413	281	193-4v	119	214-6TTx	199	224-4	53
123-4k	59	133-7	63	1519004	278	19892	304	214-6x	199	224-4TT	53
123-4TT	59	1337-10	63	1519008	278	20051-b	163	214-7	53	224-6	53
123-6	59	1337-2	63	1519012	278	201620	181	214-9	53	224-6TT	53
123-6k	59	1337-4	63	1519026	278	201803-1000	301	214-9TT	53	224-6TTx	199
123-6TT	59	1337-6	63	1519042	278	20241-b	163	215-10	53	224-6x	199
123-7	59	1337-7	63	1622v	119	20241-bc	163	215-2	53	224-7	53
123-7k	59	1337-9	63	162v	119	20251-b	163	2152-10	53	224-9	53
123-9	59	133-9	63	1632v	119	20251-bc	163	2152-2	53	224-9TT	53
123-9k	59	134-10	63	163v	119	20341-8b	165	2152-4	53	225-10	53
123-9TT	59	134-2	63	171402-20	301	20341-8bc	165	2152-4TT	53	225-2	53
124-10	59	134-4	63	171403-20	301	20341-9b	165	2152-6	53	2252-10	53
124-10k	59	134-6	63	171406-20	301	20341-9bc	165	2152-6TT	53	2252-2	53

Index by product catalog number

Cat.No.	Page	Cat.no.	Page	Cat.No.	Page	Cat.No.	Page	Cat.No.	Page	Cat.No.	Page
2252-4	53	235-6xs	199	262v	117	3132-10	73	313-6TTf7	73	3152-2f70	75
2252-4TT	53	235-7	55	2632v	117	3132-10f0	77	313-6TTx	199	3152-2TTf70	75
2252-6	53	235-9	55	263v	117	3132-10f5	77	313-6x	199	3152-4	73
2252-6TT	53	23631518350	51	264015009	51	3132-10f6	77	313-7	75	3152-4f70	75
2252-7	53	2410-s	170	265015009	51	3132-10f70	75	313-7f0	77	3152-4TT	73
2252-9	53	2410-sc	170	2722v	117	3132-10f9	77	313-7f5	77	3152-4TTf70	75
2252-9TT	53	2411-s	170	272v	117	3132-10TTf70	75	313-7f6	77	3152-6	73
225-4	53	2411-sc	170	2732v	117	3132-2	73	313-7f7	73	3152-6f70	75
225-4TT	53	2411-scl	171	273v	117	3132-2f0	77	313-7f9	77	3152-6TT	73
225-6	53	2411-sl	171	282-10v	117	3132-2f5	77	313-9	75	3152-6TTf70	75
225-6TT	53	24212-r	173	282-11v	117	3132-2f6	77	313-9f0	77	3152-7	73
225-6TTx	199	24212-rc	173	282-12v	117	3132-2f70	75	313-9f5	77	3152-7f70	75
225-6x	199	243-10	55	2822-10v	117	3132-2f9	77	313-9f6	77	3152-7TTf70	75
225-7	53	24311-s	172	2822-11v	117	3132-2TTf70	75	313-9f7	73	3152-9	73
225-9	53	24311-s5	172	2822-12v	117	3132-4	73	313-9f9	77	3152-9f70	75
225-9TT	53	24311-sc	172	2822-2v	117	3132-4f0	77	313-9TT	75	3152-9TT	73
2272-4v	133	24311-sc5	172	2822-3v	117	3132-4f5	77	313-9TTf7	73	3152-9TTf70	75
2272-6v	133	24311-sxs	204	2822-4v	117	3132-4f6	77	314-10	75	315-2f7	73
2272-7v	133	24311-sxsc	204	282-2v	117	3132-4f70	75	314-10f0	77	315-4	75
2272-9v	133	243-2	55	282-3v	117	3132-4f9	77	314-10f6	77	315-4f7	73
227-4v	133	243-4	55	282-4v	117	3132-4TT	73	314-10f7	73	315-4TT	75
227-6v	133	243-6	55	283-10v	117	3132-4TTf70	75	314-2	75	315-4TTf7	73
227-7v	133	243-6xs	199	283-11v	117	3132-6	73	3142-10	73	315-6	75
227-9v	133	243-7	55	283-12v	117	3132-6f0	77	3142-2	73	315-6f7	73
23201515120	51	243-9	55	2832-10v	117	3132-6f5	77	3142-4	73	315-6TT	75
23251515140	51	244-10	55	2832-11v	117	3132-6f6	77	3142-4TT	73	315-6TTf7	73
233-10	55	244-2	55	2832-12v	117	3132-6f70	75	3142-6	73	315-6TTx	199
2331-10	55	244-4	55	2832-2v	117	3132-6f9	77	3142-6TT	73	315-6x	199
2331-2	55	244-6	55	2832-3v	117	3132-6TT	73	3142-7	73	315-7	75
2331-4	55	244-6xs	199	2832-4v	117	3132-6TTf70	75	3142-9	73	315-7f7	73
2331-6	55	244-7	55	283-2v	117	3132-7	73	3142-9TT	73	315-9	75
2331-7	55	244-9	55	283-3v	117	3132-7f0	77	314-2f0	77	315-9f7	73
2331-9	55	245-10	55	283-4v	117	3132-7f5	77	314-2f6	77	315-9TT	75
233-2	55	245-2	55	292-10v	117	3132-7f6	77	314-2f7	73	315-9TTf7	73
23321515200	51	245-4	55	292-11v	117	3132-7f70	75	314-4	75	3172-4f70v	135
233-4	55	245-6	55	292-12v	117	3132-7f9	77	314-4f0	77	3172-4v	135
233-6	55	245-6xs	199	2922-10v	117	3132-7TTf70	75	314-4f6	77	3172-6f70v	135
233-6xs	199	245-7	55	2922-11v	117	3132-9	73	314-4f7	73	3172-6v	135
233-7	55	245-9	55	2922-12v	117	3132-9f0	77	314-4TT	75	3172-7f70v	135
233-9	55	24611-s	176	2922-2v	117	3132-9f5	77	314-4TTf7	73	3172-7v	135
23401518260	51	24611-sc	176	2922-3v	117	3132-9f6	77	314-6	75	3172-9f70v	135
234-10	55	24611-ss	204	2922-4v	117	3132-9f70	75	314-6f0	77	3172-9v	135
2341-10	55	24611-ssc	204	292-2v	117	3132-9f9	77	314-6f6	77	317-4f7v	135
2341-2	55	2510-s	170	292-3v	117	3132-9TT	73	314-6f7	73	317-4v	135
2341-4	55	2510-sc	170	292-4v	117	3132-9TTf70	75	314-6TT	75	317-6f7v	135
2341-6	55	2511-s	170	293-10v	117	313-2f0	77	314-6TTf7	73	317-6v	135
2341-7	55	2511-sc	170	293-11v	117	313-2f5	77	314-6TTx	199	317-7f7v	135
2341-9	55	2511-scl	171	293-12v	117	313-2f6	77	314-6x	199	317-7v	135
234-2	55	2511-sl	171	2932-10v	117	313-2f7	73	314-7	75	317-9f7v	135
234-4	55	2520-s	170	2932-11v	117	313-2f9	77	314-7f0	77	317-9v	135
234-6	55	25212-r	173	2932-12v	117	313-4	75	314-7f6	77	323-10	75
234-6xs	199	25212-rc	173	2932-2v	117	313-4f0	77	314-7f7	73	323-10f7	73
234-7	55	2521-s	171	2932-3v	117	313-4f5	77	314-9	75	323-2	75
234-9	55	2522-s	171	2932-4v	117	313-4f6	77	314-9f0	77	3232-10	73
23501518310	51	25311-s	172	293-2v	117	313-4f7	73	314-9f6	77	3232-2	73
235-10	55	25311-s5	172	293-3v	117	313-4f9	77	314-9f7	73	3232-4	73
2351-10	55	25311-sc	172	293-4v	117	313-4TT	75	314-9TT	75	3232-4TT	73
2351-2	55	253622-s	177	2961	173	313-4TTf7	73	314-9TTf7	73	3232-6	73
2351-4	55	253622-s5	177	313-10	75	313-6	75	315-10	75	3232-6TT	73
2351-6	55	253622-sxs	204	313-10f0	77	313-6f0	77	315-10f7	73	3232-7	73
2351-7	55	25621-s	176	313-10f5	77	313-6f5	77	315-2	75	3232-9	73
2351-9	55	25621-ss	204	313-10f6	77	313-6f6	77	3152-10	73	3232-9TT	73
235-2	55	25622-s	176	313-10f7	73	313-6f7	73	3152-10f70	75	323-2f7	73
235-4	55	25622-ss	204	313-10f9	77	313-6f9	77	3152-10TTf70	75	323-4	75
235-6	55	2622v	117	313-2	75	313-6TT	75	3152-2	73	323-4f7	73

Index by product catalog number

Cat.No.	Page	Cat.No.	Page	Cat.No.	Page	Cat.No.	Page	Cat.No.	Page	Cat.No.	Page
323-4TT	75	3252-9f70	75	3341-2	79	345-7	79	382-2f4v	123	383-4v	123
323-4TTf7	73	3252-9TT	73	3341-2fc	79	345-9	79	382-2f5v	123	392-10f4v	123
323-6	75	3252-9TTf70	75	3341-4	79	352531	181	382-2f87v	123	392-10f5v	123
323-6f7	73	325-2f7	73	3341-4fc	79	3622f87v	125	382-2f8v	123	392-10f87v	123
323-6TT	75	325-4	75	3341-6	79	3622f9v	125	382-2f9v	123	392-10f8v	123
323-6TTf7	73	325-4f7	73	3341-6fc	79	362f4v	123	382-2v	123	392-10f9v	123
323-6TTx	199	325-4TT	75	3341-7	79	362f5v	123	382-3f4v	123	392-10v	123
323-6x	199	325-4TTf7	73	3341-7fc	79	362f87v	123	382-3f5v	123	392-11f4v	123
323-7	75	325-6	75	3341-9	79	362f8v	123	382-3f87v	123	392-11f5v	123
323-7f7	73	325-6f7	73	3341-9fc	79	362f9v	123	382-3f8v	123	392-11f87v	123
323-9	75	325-6TT	75	334-2	79	362v	123	382-3f9v	123	392-11f8v	123
323-9f7	73	325-6TTf7	73	334-2fc	79	3632f87v	125	382-3v	123	392-11f9v	123
323-9TT	75	325-6TTx	199	334-4	79	3632f9v	125	382-4f4v	123	392-11v	123
323-9TTf7	73	325-6x	199	334-4fc	79	363f4v	123	382-4f5v	123	392-12f4v	123
324-10	75	325-7	75	334-6	79	363f5v	123	382-4f87v	123	392-12f5v	123
324-10f7	73	325-7f7	73	334-6fc	79	363f87v	123	382-4f8v	123	392-12f87v	123
324-2	75	325-9	75	334-6xs	201	363f8v	123	382-4f9v	123	392-12f8v	123
3242-10	73	325-9f7	73	334-7	79	363f9v	123	382-4v	123	392-12f9v	123
3242-2	73	325-9TT	75	334-7fc	79	363v	123	383-10f4v	123	392-12v	123
3242-3v	138	325-9TTf7	73	334-9	79	3722f87v	125	383-10f5v	123	3922-10f87v	125
3242-4	73	3272-4f70v	135	334-9fc	79	3722f9v	125	383-10f87v	123	3922-10f9v	125
3242-4TT	73	3272-4v	135	335-10	79	372f4v	123	383-10f8v	123	3922-11f87v	125
3242-6	73	3272-6f70v	135	335-10fc	79	372f5v	123	383-10f9v	123	3922-11f9v	125
3242-6TT	73	3272-6v	135	3351-10	79	372f87v	123	383-10v	123	3922-12f87v	125
3242-7	73	3272-7f70v	135	3351-10fc	79	372f8v	123	383-11f4v	123	3922-12f9v	125
3242-9	73	3272-7v	135	3351-2	79	372f9v	123	383-11f5v	123	3922-2f87v	125
3242-9TT	73	3272-9f70v	135	3351-2fc	79	372v	123	383-11f87v	123	3922-2f9v	125
324-2f7	73	3272-9v	135	3351-4	79	3732f87v	125	383-11f8v	123	3922-3f87v	125
324-4	75	327-4f7v	135	3351-4fc	79	3732f9v	125	383-11f9v	123	3922-3f9v	125
324-4f7	73	327-4v	135	3351-6	79	373f4v	123	383-11v	123	3922-4f87v	125
324-4TT	75	327-6f7v	135	3351-6fc	79	373f5v	123	383-12f4v	123	3922-4f9v	125
324-4TTf7	73	327-6v	135	3351-7	79	373f87v	123	383-12f5v	123	392-2f4v	123
324-6	75	327-7f7v	135	3351-7fc	79	373f8v	123	383-12f87v	123	392-2f5v	123
324-6f7	73	327-7v	135	3351-9	79	373f9v	123	383-12f8v	123	392-2f87v	123
324-6TT	75	327-9f7v	135	3351-9fc	79	373v	123	383-12f9v	123	392-2f8v	123
324-6TTf7	73	327-9v	135	335-2	79	382-10f4v	123	383-12v	123	392-2f9v	123
324-6TTx	199	333-10	79	335-2fc	79	382-10f5v	123	3832-10f87v	125	392-2v	123
324-6x	199	333-10fc	79	335-4	79	382-10f87v	123	3832-10f9v	125	392-3f4v	123
324-7	75	3331-10	79	335-4fc	79	382-10f8v	123	3832-11f87v	125	392-3f5v	123
324-7f7	73	3331-10fc	79	335-6	79	382-10f9v	123	3832-11f9v	125	392-3f87v	123
324-9	75	3331-2	79	335-6fc	79	382-10v	123	3832-12f87v	125	392-3f8v	123
324-9f7	73	3331-2fc	79	335-6xs	201	382-11f4v	123	3832-12f9v	125	392-3f9v	123
324-9TT	75	3331-4	79	335-7	79	382-11f5v	123	3832-2f87v	125	392-3v	123
324-9TTf7	73	3331-4fc	79	335-7fc	79	382-11f87v	123	3832-2f9v	125	392-4f4v	123
325-10	75	3331-6	79	335-9	79	382-11f8v	123	3832-3f87v	125	392-4f5v	123
325-10f7	73	3331-6fc	79	335-9fc	79	382-11f9v	123	3832-3f9v	125	392-4f87v	123
325-2	75	3331-7	79	343-10	79	382-11v	123	3832-4f87v	125	392-4f8v	123
3252-10	73	3331-7fc	79	343-2	79	382-12f4v	123	3832-4f9v	125	392-4f9v	123
3252-10f70	75	3331-9	79	343-4	79	382-12f5v	123	383-2f4v	123	392-4v	123
3252-10TTf70	75	3331-9fc	79	343-6	79	382-12f87v	123	383-2f5v	123	393-10f4v	123
3252-2	73	333-2	79	343-6xs	201	382-12f8v	123	383-2f87v	123	393-10f5v	123
3252-2f70	75	333-2fc	79	343-7	79	382-12f9v	123	383-2f8v	123	393-10f87v	123
3252-2TTf70	75	333-4	79	343-9	79	382-12v	123	383-2f9v	123	393-10f8v	123
3252-4	73	333-4fc	79	344-10	79	3822-10f87v	125	383-2v	123	393-10f9v	123
3252-4f70	75	333-6	79	344-2	79	3822-10f9v	125	383-3f4v	123	393-10v	123
3252-4TT	73	333-6fc	79	344-4	79	3822-11f87v	125	383-3f5v	123	393-11f4v	123
3252-4TTf70	75	333-6xs	201	344-6	79	3822-11f9v	125	383-3f87v	123	393-11f5v	123
3252-6	73	333-7	79	344-6xs	201	3822-12f87v	125	383-3f8v	123	393-11f87v	123
3252-6f70	75	333-7fc	79	344-7	79	3822-12f9v	125	383-3f9v	123	393-11f8v	123
3252-6TT	73	333-9	79	344-9	79	3822-2f87v	125	383-3v	123	393-11f9v	123
3252-6TTf70	75	333-9fc	79	345-10	79	3822-2f9v	125	383-4f4v	123	393-11v	123
3252-7	73	334-10	79	345-2	79	3822-3f87v	125	383-4f5v	123	393-12f4v	123
3252-7f70	75	334-10fc	79	345-4	79	3822-3f9v	125	383-4f87v	123	393-12f5v	123
3252-7TTf70	75	3341-10	79	345-6	79	3822-4f87v	125	383-4f8v	123	393-12f87v	123
3252-9	73	3341-10fc	79	345-6xs	201	3822-4f9v	125	383-4f9v	123	393-12f8v	123

Index by product catalog number

Cat.No.	Page	Cat.no.	Page	Cat.No.	Page	Cat.No.	Page	Cat.No.	Page	Cat.No.	Page
393-12f9v	123	4132-7f8	83	4142-4TTf8	83	4152-7	89	423-9TT	83	425-6	281
393-12v	123	4132-7f87	87	4142-6	89	4152-7f78	83	423-9TTf9	87	425-6f9	87
3932-10f87v	125	4132-9	89	4142-6f78	85	4152-7f87	87	424-10	83	425-6TT	83
3932-10f9v	125	4132-9f78	85	4142-6f78	281	4152-9	89	424-10f9	87	425-6TTf9	87
3932-11f87v	125	4132-9f8	83	4142-6f8	83	4152-9f78	83	424-2	83	425-6TTx	201
3932-11f9v	125	4132-9f87	87	4142-6f87	87	4152-9f87	87	4242-10	89	425-6x	201
3932-12f87v	125	4132-9TTf78	85	4142-6TTf78	85	4152-9TTf78	83	4242-10f78	83	425-7	83
3932-12f9v	125	4132-9TTf8	83	4142-6TTf8	83	415-2f87	87	4242-2	89	425-7f9	87
3932-2f87v	125	413-2f66	89	4142-7	89	415-2f9	87	4242-2f78	83	425-9	83
3932-2f9v	125	413-2f8	83	4142-7f78	85	415-4	83	4242-3f78v	138	425-9f9	87
3932-3f87v	125	413-2f87	87	4142-7f8	83	415-4f87	87	4242-4	89	425-9TT	83
3932-3f9v	125	413-2f9	89	4142-7f87	87	415-4f9	87	4242-4f78	83	425-9TTf9	87
3932-4f87v	125	413-2TTf66	89	4142-9	89	415-4TT	83	4242-4TTf78	83	433-10	91
3932-4f9v	125	413-4	85	4142-9f78	85	415-4TTf9	87	4242-6	89	433-10fc	91
393-2f4v	123	413-4f66	89	4142-9f8	83	415-6	83	4242-6f78	83	433-10fd	91
393-2f5v	123	413-4f8	83	4142-9f87	87	415-6	281	4242-6f78	281	4331-10	91
393-2f87v	123	413-4f87	87	4142-9TTf78	85	415-6f87	87	4242-6TTf78	83	4331-10fc	91
393-2f8v	123	413-4f9	89	4142-9TTf8	83	415-6f9	87	4242-7	89	4331-10fd	91
393-2f9v	123	413-4TT	85	414-2f8	83	415-6TT	83	4242-7f78	83	4331-2	91
393-2v	123	413-4TTf66	89	414-2f87	87	415-6TTf9	87	4242-9	89	4331-2fc	91
393-3f4v	123	413-4TTf8	83	414-2f9	89	415-6TTx	201	4242-9f78	83	4331-2fd	91
393-3f5v	123	413-6	85	414-4	85	415-6x	201	4242-9TTf78	83	4331-4	91
393-3f87v	123	413-6	281	414-4f8	83	415-7	83	424-2f9	87	4331-4fc	91
393-3f8v	123	413-6f66	89	414-4f87	87	415-7f87	87	424-4	83	4331-4fd	91
393-3f9v	123	413-6f66	143	414-4f9	89	415-7f9	87	424-4f9	87	4331-6	91
393-3v	123	413-6f8	83	414-4TT	85	415-9	83	424-4TT	83	4331-6fc	91
393-4f4v	123	413-6f87	87	414-4TTf8	83	415-9f87	87	424-4TTf9	87	4331-6fd	91
393-4f5v	123	413-6f8x	201	414-6	85	415-9f9	87	424-6	83	4331-7	91
393-4f87v	123	413-6f9	89	414-6	281	415-9TT	83	424-6	281	4331-7fc	91
393-4f8v	123	413-6TT	85	414-6f8	83	415-9TTf9	87	424-6f9	87	4331-7fd	91
393-4f9v	123	413-6TTf66	89	414-6f87	87	423-10	83	424-6TT	83	4331-9	91
393-4v	123	413-6TTf8	83	414-6f8x	201	423-10f9	87	424-6TTf9	87	4331-9fc	91
410725	267	413-6TTf8x	201	414-6f9	89	423-2	83	424-6TTx	201	4331-9fd	91
410726	267	413-7	85	414-6TT	85	4232-10	89	424-6x	201	433-2	91
410998	267	413-7f66	89	414-6TTf8	83	4232-10f78	83	424-7	83	433-2fc	91
413-10	85	413-7f8	83	414-6TTf8x	201	4232-2	89	424-7f9	87	433-2fd	91
413-10f66	89	413-7f87	87	414-7	85	4232-2f78	83	424-9	83	433-4	91
413-10f8	83	413-7f9	89	414-7f8	83	4232-4	89	424-9f9	87	433-4fc	91
413-10f87	87	413-7TTf66	89	414-7f87	87	4232-4f78	83	424-9TT	83	433-4fd	91
413-10f9	89	413-9	85	414-7f9	89	4232-4TTf78	83	424-9TTf9	87	433-6	91
413-10TTf66	89	413-9f66	89	414-9	85	4232-6	89	425-10	83	433-6fc	91
413-2	85	413-9f8	83	414-9f8	83	4232-6f78	83	425-10f9	87	433-6fd	91
4132-10	89	413-9f87	87	414-9f87	87	4232-6f78	281	425-2	83	433-6xs	201
4132-10f78	85	413-9f9	89	414-9f9	89	4232-6TTf78	83	4252-10	89	433-7	91
4132-10f8	83	413-9TT	85	414-9TT	85	4232-7	89	4252-10f78	83	433-7fc	91
4132-10f87	87	413-9TTf66	89	414-9TTf8	83	4232-7f78	83	4252-2	89	433-7fd	91
4132-2	89	413-9TTf8	83	415-10	83	4232-9	89	4252-2f78	83	433-9	91
4132-2f78	85	414-10	85	415-10f87	87	4232-9f78	83	4252-4	89	433-9fc	91
4132-2f8	83	414-10f8	83	415-10f9	87	4232-9TTf78	83	4252-4f78	83	433-9fd	91
4132-2f87	87	414-10f87	87	415-2	83	423-2f9	87	4252-4TTf78	83	434-10	91
4132-4	89	414-10f9	89	4152-10	89	423-4	83	4252-6	89	434-10fc	91
4132-4f78	85	414-2	85	4152-10f78	83	423-4f9	87	4252-6f78	83	434-10fd	91
4132-4f8	83	4142-10	89	4152-10f87	87	423-4TT	83	4252-6f78	281	4341-10	91
4132-4f87	87	4142-10f78	85	4152-2	89	423-4TTf9	87	4252-6TTf78	83	4341-10fc	91
4132-4TTf78	85	4142-10f8	83	4152-2f78	83	423-6	83	4252-7	89	4341-10fd	91
4132-4TTf8	83	4142-10f87	87	4152-2f87	87	423-6	281	4252-7f78	83	4341-2	91
4132-6	89	4142-2	89	4152-4	89	423-6f9	87	4252-9	89	4341-2fc	91
4132-6f78	85	4142-2f78	85	4152-4f78	83	423-6TT	83	4252-9f78	83	4341-2fd	91
4132-6f78	281	4142-2f8	83	4152-4f87	87	423-6TTf9	87	4252-9TTf78	83	4341-4	91
4132-6f8	83	4142-2f87	87	4152-4TTf78	83	423-6TTx	201	425-2f9	87	4341-4fc	91
4132-6f87	87	4142-4	89	4152-6	89	423-6x	201	425-4	83	4341-4fd	91
4132-6TTf78	85	4142-4f78	85	4152-6f78	83	423-7	83	425-4f9	87	4341-6	91
4132-6TTf8	83	4142-4f8	83	4152-6f78	281	423-7f9	87	425-4TT	83	4341-6fc	91
4132-7	89	4142-4f87	87	4152-6f87	87	423-9	83	425-4TTf9	87	4341-6fd	91
4132-7f78	85	4142-4TTf78	85	4152-6TTf78	83	423-9f9	87	425-6	83	4341-7	91

Index by product catalog number

Cat.No.	Page	Cat.No.	Page	Cat.No.	Page	Cat.No.	Page	Cat.No.	Page	Cat.No.	Page
4341-7fc	91	44051560	209	510151001	191	5142-7k	29	517252503	191	525-6d	27
4341-7fd	91	44051857120	209	51015160	191	5142-9k	29	517254003	191	525-6kd	27
4341-9	91	443-10	91	510151601	191	514-2d	27	5172-6kv	131	525-6TT	27
4341-9fc	91	443-10fe	91	51024016	191	514-4	27	5172-7kv	131	525-7	27
4341-9fd	91	443-2	91	510240161	191	514-4d	27	5172-9kv	131	525-7d	27
434-2	91	443-2fe	91	51024025	191	514-6	27	517-4v	131	525-7kd	27
434-2fc	91	443-4	91	510240251	191	514-6d	27	517-6v	131	525-9	27
434-2fd	91	443-4fe	91	51024040	191	514-7	27	517-7v	131	525-9d	27
434-4	91	443-6	91	510240401	191	514-7d	27	517-9v	131	525-9kd	27
434-4fc	91	443-6fe	91	51024063	191	514-9	27	523-10	27	525-9TT	27
434-4fd	91	443-6xs	201	510240631	191	514-9d	27	523-10d	27	5272-4kv	131
434-6	91	443-7	91	51024100	191	515-10	27	523-2	27	5272-6kv	131
434-6fc	91	443-7fe	91	510241001	191	515-10d	27	5232-10k	29	5272-7kv	131
434-6fd	91	443-9	91	51024160	191	515-10kd	27	5232-2k	29	5272-9kv	131
434-6xs	201	443-9fe	91	510241601	191	515-2	27	5232-4k	29	527-4v	131
434-7	91	444-10	91	51024250	191	5152-10k	29	5232-6k	29	527-6v	131
434-7fc	91	444-10fe	91	510242501	191	5152-2k	29	5232-7k	29	527-7v	131
434-7fd	91	444-2	91	51024400	191	5152-4k	29	5232-9k	29	527-9v	131
434-9	91	444-2fe	91	510244001	191	5152-6k	29	523-2d	27	533-10	31
434-9fc	91	444-4	91	51025016	191	5152-7k	29	523-4	27	533-2	31
434-9fd	91	444-4fe	91	510250161	191	5152-9k	29	523-4d	27	533-4	31
435-10	91	444-6	91	51025025	191	515-2d	27	523-6	27	533-6	31
435-10fc	91	444-6fe	91	510250251	191	515-2kd	27	523-6d	27	533-7	31
435-10fd	91	444-6xs	201	51025040	191	515-4	27	523-7	27	533-9	31
4351-10	91	444-7	91	510250401	191	515-4d	27	523-7d	27	534-10	31
4351-10fc	91	444-7fe	91	51025063	191	515-4kd	27	523-9	27	534-2	31
4351-10fd	91	444-9	91	510250631	191	515-4TT	27	523-9d	27	534-4	31
4351-2	91	444-9fe	91	51025100	191	515-6	27	524-10	27	534-6	31
4351-2fc	91	445-10	91	510251001	191	515-6d	27	524-10d	27	534-7	31
4351-2fd	91	445-10fe	91	51025160	191	515-6kd	27	524-2	27	534-9	31
4351-4	91	445-2	91	510251601	191	515-6TT	27	5242-10k	29	535-10	31
4351-4fc	91	445-2fe	91	51025250	191	515-7	27	5242-2k	29	535-2	31
4351-4fd	91	445-4	91	510252501	191	515-7d	27	5242-4k	29	535-4	31
4351-6	91	445-4fe	91	51025400	191	515-7kd	27	5242-6k	29	535-6	31
4351-6fc	91	445-6	91	510254001	191	515-9	27	5242-7k	29	535-7	31
4351-6fd	91	445-6fe	91	513-10	27	515-9d	27	5242-9k	29	535-9	31
4351-7	91	445-6xs	201	513-10d	27	515-9kd	27	524-2d	27	54014016	190
4351-7fc	91	445-7	91	513-2	27	515-9TT	27	524-4	27	540140161	190
4351-7fd	91	445-7fe	91	5132-10k	29	517140163	191	524-4d	27	54014025	190
4351-9	91	445-9	91	5132-2k	29	517140253	191	524-4TT	27	540140251	190
4351-9fc	91	445-9fe	91	5132-4k	29	517140403	191	524-6	27	54014040	190
4351-9fd	91	45k23	159	5132-6k	29	517140633	191	524-6d	27	540140401	190
435-2	91	502010001	299	5132-7k	29	517141003	191	524-6TT	27	54014063	190
435-2fc	91	502010005	299	5132-9k	29	517141603	191	524-7	27	540140631	190
435-2fd	91	51014016	191	513-2d	27	517150163	191	524-7d	27	54014100	190
435-4	91	510140161	191	513-4	27	517150253	191	524-9	27	540141001	190
435-4fc	91	51014025	191	513-4d	27	517150403	191	524-9d	27	54014160	190
435-4fd	91	510140251	191	513-4TT	27	517150633	191	524-9TT	27	540141601	190
435-6	91	51014040	191	513-6	27	517151003	191	525-10	27	54014530	188
435-6fc	91	510140401	191	513-6d	27	517151603	191	525-10d	27	540145301	188
435-6fd	91	51014063	191	513-6d	142	517240163	191	525-10kd	27	54014610	188
435-6xs	201	510140631	191	513-6TT	27	517240253	191	525-2	27	540146101	188
435-7	91	51014100	191	513-7	27	517240403	191	5252-10k	29	54015016	190
435-7fc	91	510141001	191	513-7d	27	517240633	191	5252-2k	29	540150161	190
435-7fd	91	51014160	191	513-9	27	517241003	191	5252-4k	29	54015025	190
435-9	91	510141601	191	513-9d	27	517241603	191	5252-6k	29	540150251	190
435-9fc	91	51015016	191	513-9TT	27	517242503	191	5252-7k	29	54015040	190
435-9fd	91	510150161	191	51400159	295	517244003	191	5252-9k	29	540150401	190
44012085	209	51015025	191	514-10	27	5172-4kv	131	525-2d	27	54015063	190
44012085OZ	209	510150251	191	514-10d	27	517250163	191	525-2kd	27	540150631	190
44013085	209	51015040	191	514-2	27	517250253	191	525-4	27	54015100	190
44013085OZ	209	510150401	191	5142-10k	29	517250403	191	525-4d	27	540151001	190
44015085	209	51015063	191	5142-2k	29	517250633	191	525-4kd	27	54015160	190
44015085OZ	209	510150631	191	5142-4k	29	517251003	191	525-4TT	27	540151601	190
44027560	209	51015100	191	5142-6k	29	517251603	191	525-6	27	54015530	188

Index by product catalog number

Cat.No.	Page	Cat.no.	Page	Cat.No.	Page	Cat.No.	Page	Cat.No.	Page	Cat.No.	Page
540155301	188	547140163	190	561060C2001	186	6014-4	101	61232-9	101	6142-9	37
54015610	188	547140253	190	561060C2003	187	6014-6	101	6123-4	101	614-2f3	35
540156101	188	547140403	190	561060C2501	186	6014-7	101	6123-6	101	614-2f6	35
54024016	190	547140633	190	561060C2503	187	6014-9	101	6123-7	101	614-4	35
540240161	190	547141003	190	561060C3001	186	60152-4	101	6123-9	101	614-4f3	35
54024025	190	547141603	190	561060C3003	187	60152-6	101	61242-3	101	614-4f6	35
540240251	190	54714530	188	56108000	184	60152-7	101	61242-4	101	614-6	35
54024040	190	547145301	188	561080C2001	186	60152-9	101	61242-6	101	614-6f3	35
540240401	190	547145303	188	561080C2003	187	6015-4	101	61242-7	101	614-6f6	35
54024063	190	547150163	190	561080C2501	186	6015-6	101	61242-9	101	614-6x	197
540240631	190	547150253	190	561080C2503	187	6015-7	101	6124-4	101	614-7	35
54024100	190	547150403	190	561080C3001	186	6015-9	101	6124-6	101	614-7f3	35
540241001	190	547150633	190	561080C3003	187	60232-4	101	6124-7	101	614-7f6	35
54024160	190	547151003	190	56110004	185	60232-6	101	6124-9	101	614-9	35
540241601	190	547151603	190	561100C2001	186	60232-7	101	61252-4	101	614-9f3	35
54024200	190	54715530	188	561100C2003	187	60232-9	101	61252-6	101	614-9f6	35
540242001	190	547155301	188	561100C2501	186	6023-4	101	61252-7	101	615-10	35
54024250	190	547155303	188	561100C2503	187	6023-6	101	61252-9	101	615-10f6	35
540242501	190	547240163	190	561100C3001	186	6023-7	101	6125-4	101	615-10f7	37
54024320	190	547240253	190	561100C3003	187	6023-9	101	6125-6	101	615-2	35
540243201	190	547240403	190	56112004	185	60242-4	101	6125-7	101	6152-10	37
54024530	188	547240633	190	56114004	185	60242-6	101	6125-9	101	6152-2	37
540245301	188	547241003	190	56115004	185	60242-7	101	613-10	35	6152-4	37
54024625	188	547241603	190	56116004	185	60242-9	101	613-10f3	35	6152-4TT	37
540246251	188	547242003	190	562v	119	6024-4	101	613-10f6	35	6152-6	37
54025016	190	547242503	190	563v	119	6024-6	101	613-2	35	6152-6TT	37
540250161	190	547243203	190	572v	119	6024-7	101	6132-10	37	6152-7	37
54025025	190	54724530	188	573v	119	6024-9	101	6132-2	37	6152-9	37
540250251	190	547245301	188	582-10v	119	60252-4	101	6132-4	37	6152-9TT	37
54025040	190	547245303	188	582-11v	119	60252-6	101	6132-4TT	37	615-2f6	35
540250401	190	547250163	190	582-12v	119	60252-7	101	6132-6	37	615-2f7	37
54025063	190	547250253	190	582-2v	119	60252-9	101	6132-6TT	37	615-4	35
540250631	190	547250403	190	582-3v	119	6025-4	101	6132-7	37	615-4f6	35
54025100	190	547250633	190	582-4v	119	6025-6	101	6132-9	37	615-4f7	37
540251001	190	547251003	190	583-10v	119	6025-7	101	6132-9TT	37	615-4TT	35
54025160	190	547251603	190	583-11v	119	6025-9	101	613-2f3	35	615-4TTf7	37
540251601	190	547252003	190	583-12v	119	60667031	297	613-2f6	35	615-6	35
54025200	190	547252503	190	583-2v	119	60997032	297	613-4	35	615-6f6	35
540252001	190	547253203	190	583-3v	119	61132-4	101	613-4f3	35	615-6f7	37
54025250	190	54725530	188	583-4v	119	61132-6	101	613-4f6	35	615-6TT	35
540252501	190	547255301	188	592-10v	119	61132-7	101	613-4TT	35	615-6TTf7	37
54025320	190	547255303	188	592-11v	119	61132-9	101	613-6	35	615-6TTx	197
540253201	190	5571501000	192	592-12v	119	6113-4	101	613-6f3	35	615-6x	197
54025530	188	5571501600	192	592-2v	119	6113-6	101	613-6f6	35	615-7	35
540255301	188	5571502400	192	592-3v	119	6113-7	101	613-6TT	35	615-7f6	35
54025625	188	5571506000	192	592-4v	119	6113-9	101	613-6TTx	197	615-7f7	37
540256251	188	5571510000	192	593-10v	119	61142-4	101	613-6x	197	615-9	35
543-10	31	5571512000	192	593-11v	119	61142-6	101	613-7	35	615-9f6	35
543-2	31	5571516000	192	593-12v	119	61142-7	101	613-7f3	35	615-9f7	37
543-4	31	5572510000	192	593-2v	119	61142-9	101	613-7f6	35	615-9TT	35
543-6	31	5572512000	192	593-3v	119	6114-4	101	613-9	35	615-9TTf7	37
543-7	31	5572516000	192	593-4v	119	6114-6	101	613-9f3	35	6172-4v	131
543-9	31	56101500	184	598053	267	6114-7	101	613-9f6	35	6172-6v	131
544-10	31	56103000	184	60132-4	101	6114-9	101	613-9TT	35	6172-7v	131
544-2	31	56103001	184	60132-6	101	61152-4	101	61400135	295	6172-9v	131
544-4	31	56104000	184	60132-7	101	61152-6	101	61400163	295	617-4f7v	131
544-6	31	56104001	184	60132-9	101	61152-7	101	614-10	35	617-4v	131
544-7	31	561040C2001	186	6013-4	101	61152-9	101	614-10f3	35	617-6f7v	131
544-9	31	561040C2003	187	6013-6	101	6115-4	101	614-10f6	35	617-6v	131
545-10	31	561040C2501	186	6013-7	101	6115-6	101	614-2	35	617-7f7v	131
545-2	31	561040C2503	187	6013-9	101	6115-7	101	6142-10	37	617-7v	131
545-4	31	561040C3001	186	60142-4	101	6115-9	101	6142-2	37	617-9f7v	131
545-6	31	561040C3003	187	60142-6	101	61232-4	101	6142-4	37	617-9v	131
545-7	31	56105000	184	60142-7	101	61232-6	101	6142-6	37	623-10	35
545-9	31	56106000	184	60142-9	101	61232-7	101	6142-7	37	623-2	35

Index by product catalog number

Cat.No.	Page	Cat.No.	Page	Cat.No.	Page	Cat.No.	Page	Cat.No.	Page	Cat.No.	Page
6232-10	37	627-4v	131	667109-1/9	302	733-2	43	751423-9	61	752523-9	61
6232-2	37	627-6f7v	131	667109-2/3	302	733-4	43	75142-4	105	75252-4	105
6232-4	37	627-6v	131	667109-3/2	302	733-6	43	75142-6	105	75252-6	105
6232-6	37	627-7f7v	131	667119-1/6	302	733-7	43	75142-7	105	75252-7	105
6232-7	37	627-7v	131	667119-2/6	302	733-9	43	75142-9	105	75252-9	105
6232-9	37	627-9f7v	131	667119-2/9	302	734-10	43	75143-4	61	75253-4	61
623-4	35	627-9v	131	667119-3/2	302	734-2	43	75143-6	61	75253-6	61
623-6	35	633-10	41	667119-3/3	302	734-4	43	75143-7	61	75253-7	61
623-6x	197	6331-10k	41	667119-5/2	302	734-6	43	75143-9	61	75253-9	61
623-7	35	6331-2k	41	667119-5/3	302	734-7	43	7514-4	105	7525-4	105
623-9	35	6331-4k	41	667119-50	301	734-9	43	7514-6	105	7525-6	105
624-10	35	6331-6k	41	667235-50	301	735-10	43	7514-7	105	7525-7	105
624-2	35	6331-7k	41	667255-50	301	735-2	43	7514-9	105	7525-9	105
6242-10	37	6331-9k	41	667307-50	301	735-4	43	751523-4	61	75332-4	107
6242-2	37	633-2	41	667316-50	301	735-6	43	751523-6	61	75332-6	107
6242-4	37	633-4	41	667334-50	301	735-7	43	751523-7	61	75332-7	107
6242-4TT	37	633-6	41	667407-50	301	735-9	43	751523-9	61	75332-9	107
6242-6	37	633-7	41	667416-50	301	74142-6	49	75152-4	105	75342-4	107
6242-6TT	37	633-9	41	667434-50	301	74142-9	49	75152-6	105	75342-6	107
6242-7	37	634-10	41	672v	119	7414-6	49	75152-7	105	75342-7	107
6242-9	37	6341-10k	41	673v	119	7414-9	49	75152-9	105	75342-9	107
6242-9TT	37	6341-2k	41	682-10v	119	74152-6	49	75153-4	61	75352-4	107
624-4	35	6341-4k	41	682-11v	119	7415-6	49	75153-6	61	75352-6	107
624-4TT	35	6341-6k	41	682-12v	119	74242-6	49	75153-7	61	75352-7	107
624-6	35	6341-7k	41	682-2v	119	7424-6	49	75153-9	61	75352-9	107
624-6TT	35	6341-9k	41	682-3v	119	7424-9	49	7515-4	105	75615-6	29
624-6TTx	197	634-2	41	682-4v	119	74252-6	49	7515-6	105	75625-6	29
624-6x	197	634-4	41	683-10v	119	7425-6	49	7515-7	105	75915-6	67
624-7	35	634-6	41	683-11v	119	743-10	43	7515-9	105	75925-6	67
624-9	35	634-7	41	683-12v	119	743-2	43	752323-4	61	76132-4	111
624-9TT	35	634-9	41	683-2v	119	743-4	43	752323-6	61	76132-6	111
625-10	35	635-10	41	683-3v	119	743-6	43	752323-7	61	76132-7	111
625-10f7	37	6351-10k	41	683-4v	119	743-7	43	752323-9	61	76132-9	111
625-2	35	6351-2k	41	692-10v	119	743-9	43	75232-4	105	7613-4	111
6252-10	37	6351-4k	41	692-11v	119	744-10	43	75232-6	105	7613-6	111
6252-2	37	6351-6k	41	692-12v	119	744-2	43	75232-7	105	7613-7	111
6252-4	37	6351-7k	41	692-2v	119	744-4	43	75232-9	105	7613-9	111
6252-4TT	37	6351-9k	41	692-3v	119	744-6	43	75233-4	61	76142-4	111
6252-6	37	635-2	41	692-4v	119	744-7	43	75233-6	61	76142-6	111
6252-6TT	37	635-4	41	693-10v	119	744-9	43	75233-7	61	76142-7	111
6252-7	37	635-6	41	693-11v	119	745-10	43	75233-9	61	76142-9	111
6252-9	37	635-7	41	693-12v	119	745-2	43	7523-4	105	7614-4	111
6252-9TT	37	635-9	41	693-2v	119	745-4	43	7523-6	105	7614-6	111
625-2f7	37	643-10	41	693-3v	119	745-6	43	7523-7	105	7614-7	111
625-4	35	643-2	41	693-4v	119	745-7	43	7523-9	105	7614-9	111
625-4f7	37	643-4	41	70142-6	45	745-9	43	75242-3	139	76152-4	111
625-4TT	35	643-6	41	70142-9	45	751323-4	61	752423-4	61	76152-6	111
625-4TTf7	37	643-7	41	7014-6	45	751323-6	61	752423-6	61	76152-7	111
625-6	35	643-9	41	7014-9	45	751323-7	61	752423-7	61	76152-9	111
625-6f7	37	644-10	41	70152-6	45	751323-9	61	752423-9	61	7615-4	111
625-6TT	35	644-2	41	7015-6	45	75132-4	105	75242-4	105	7615-6	111
625-6TTf7	37	644-4	41	7015-6TT	45	75132-6	105	75242-6	105	7615-7	111
625-6TTx	197	644-6	41	70242-6	45	75132-7	105	75242-7	105	7615-9	111
625-6x	197	644-7	41	70242-9	45	75132-9	105	75242-9	105	76232-4	111
625-7	35	644-9	41	7024-6	45	75133-4	61	75243-4	61	76232-6	111
625-7f7	37	645-10	41	7024-9	45	75133-6	61	75243-6	61	76232-7	111
625-9	35	645-2	41	70252-6	45	75133-7	61	75243-7	61	76232-9	111
625-9f7	37	645-4	41	7025-6	45	75133-9	61	75243-9	61	7623-4	111
625-9TT	35	645-6	41	7025-6TT	45	7513-4	105	7524-4	105	7623-6	111
625-9TTf7	37	645-7	41	70300196	295	7513-6	105	7524-6	105	7623-7	111
6272-4v	131	645-9	41	70500197	295	7513-7	105	7524-7	105	7623-9	111
6272-6v	131	662v	119	711632	50	7513-9	105	7524-9	105	76242-3	139
6272-7v	131	663v	119	71400139	295	751423-4	61	752523-4	61	76242-4	111
6272-9v	131	667109-1/3	302	7163125	50	751423-6	61	752523-6	61	76242-6	111
627-4f7v	131	667109-1/6	302	733-10	43	751423-7	61	752523-7	61	76242-9	111

Index by product catalog number

Cat.No.	Page	Cat.no.	Page	Cat.No.	Page	Cat.No.	Page	Cat.No.	Page	Cat.No.	Page
7624-4	111	77714-4	39	777252-4	39	78132-9	113	8013-7	25	8023-6TT	25
7624-6	111	77714-4TT	39	777252-4TT	39	7813-4	113	8013-9	25	8023-7	25
7624-7	111	77714-6	39	777252-6	39	7813-6	113	8013-9TT	25	8023-9	25
7624-9	111	77714-6TT	39	777252-6TT	39	7813-7	113	8014-10	25	8023-9TT	25
76252-4	111	77714-7	39	777252-7	39	7813-9	113	8014-2	25	8024-10	25
76252-6	111	77714-9	39	777252-9	39	78142-4	113	80142-10	25	8024-2	25
76252-7	111	77714-9TT	39	777252-9TT	39	78142-6	113	80142-2	25	80242-10	25
76252-9	111	77715-10	39	77725-4	39	78142-7	113	80142-4	25	80242-2	25
7625-4	111	77715-2	39	77725-4TT	39	78142-9	113	80142-4TT	25	80242-4	25
7625-6	111	777152-10	39	77725-6	39	7814-4	113	80142-6	25	80242-4TT	25
7625-7	111	777152-2	39	77725-6TT	39	7814-6	113	80142-6TT	25	80242-6	25
7625-9	111	777152-4	39	77725-7	39	7814-7	113	80142-7	25	80242-6TT	25
76332-4	111	777152-4TT	39	77725-9	39	7814-9	113	80142-9	25	80242-7	25
76332-6	111	777152-6	39	77725-9TT	39	78152-4	113	80142-9TT	25	80242-9	25
76332-7	111	777152-6TT	39	77733-10	43	78152-6	113	8014-4	25	80242-9TT	25
76332-9	111	777152-7	39	77733-10k	43	78152-7	113	8014-4TT	25	8024-4	25
76342-4	111	777152-9	39	77733-2	43	78152-9	113	8014-6	25	8024-4TT	25
76342-6	111	777152-9TT	39	77733-2k	43	7815-4	113	8014-6TT	25	8024-6	25
76342-7	111	77715-4	39	77733-4	43	7815-6	113	8014-7	25	8024-6TT	25
76342-9	111	77715-4TT	39	77733-4k	43	7815-7	113	8014-9	25	8024-7	25
76352-4	111	77715-6	39	77733-6	43	7815-9	113	8014-9TT	25	8024-9	25
76352-6	111	77715-6TT	39	77733-6k	43	78232-4	113	8015-10	25	8024-9TT	25
76352-7	111	77715-7	39	77733-7	43	78232-6	113	8015-2	25	8025-10	25
76352-9	111	77715-9	39	77733-7k	43	78232-7	113	80152-10	25	8025-2	25
77152-6k	47	77715-9TT	39	77733-9	43	78232-9	113	80152-2	25	80252-10	25
7715-6	47	77723-10	39	77733-9k	43	7823-4	113	80152-4	25	80252-2	25
7715-6d	47	77723-2	39	77734-10	43	7823-6	113	80152-4TT	25	80252-4	25
77242-6k	47	777232-10	39	77734-10k	43	7823-7	113	80152-6	25	80252-4TT	25
77242-9k	47	777232-2	39	77734-2	43	7823-9	113	80152-6TT	25	80252-6	25
7724-6	47	777232-4	39	77734-2k	43	78242-3	139	80152-7	25	80252-6TT	25
7724-6d	47	777232-4TT	39	77734-4	43	78242-4	113	80152-9	25	80252-7	25
7724-9	47	777232-6	39	77734-4k	43	78242-6	113	80152-9TT	25	80252-9	25
7724-9d	47	777232-6TT	39	77734-6	43	78242-7	113	8015-4	25	80252-9TT	25
77252-6k	47	777232-7	39	77734-6k	43	78242-9	113	8015-4TT	25	8025-4	25
7725-6	47	777232-9	39	77734-7	43	7824-4	113	8015-6	25	8025-4TT	25
7725-6d	47	777232-9TT	39	77734-7k	43	7824-6	113	8015-6TT	25	8025-6	25
77713-10	39	77723-4	39	77734-9	43	7824-7	113	8015-7	25	8025-6TT	25
77713-2	39	77723-4TT	39	77734-9k	43	7824-9	113	8015-9	25	8025-7	25
777132-10	39	77723-6	39	77735-10	43	78252-4	113	8015-9TT	25	8025-9	25
777132-2	39	77723-6TT	39	77735-10k	43	78252-6	113	80172-4v	129	8025-9TT	25
777132-4	39	77723-7	39	77735-2	43	78252-7	113	80172-6v	129	80272-4v	129
777132-4TT	39	77723-9	39	77735-2k	43	78252-9	113	80172-7v	129	80272-6v	129
777132-6	39	77723-9TT	39	77735-4	43	7825-4	113	80172-9v	129	80272-7v	129
777132-6TT	39	77724-10	39	77735-4k	43	7825-6	113	8017-4v	129	80272-9v	129
777132-7	39	77724-2	39	77735-6	43	7825-7	113	8017-6v	129	8027-4v	129
777132-9	39	777242-10	39	77735-6k	43	825-9	113	8017-7v	129	8027-6v	129
777132-9TT	39	777242-2	39	77735-7	43	80000	80	8017-9v	129	8027-7v	129
77713-4	39	777242-4	39	77735-7k	43	80013-6	80	80200	80	8027-9v	129
77713-4TT	39	777242-4TT	39	77735-9	43	80014-6	80	80213-6	80	80400	80
77713-6	39	777242-6	39	77735-9k	43	80015-6	80	80214-6	80	80413-6	80
77713-6TT	39	777242-6TT	39	778142-6	49	8013-10	25	80215-6	80	80414-6	80
77713-7	39	777242-7	39	778142-9	49	8013-2	25	8023-10	25	80415-6	80
77713-9	39	777242-9	39	77814-6	49	80132-10	25	8023-2	25	80800072	295
77713-9TT	39	777242-9TT	39	77814-9	49	80132-2	25	80232-10	25	8213-6	142
77714-10	39	77724-4	39	778152-6	49	80132-4	25	80232-2	25	8213-Do	142
77714-2	39	77724-4TT	39	77815-6	49	80132-4TT	25	80232-4	25	82172-4v	133
777142-10	39	77724-6	39	778242-6	49	80132-6	25	80232-4TT	25	82172-6v	133
777142-2	39	77724-6TT	39	778242-9	49	80132-6TT	25	80232-6	25	82172-7v	133
777142-4	39	77724-7	39	77824-6	49	80132-7	25	80232-6TT	25	82172-9v	133
777142-4TT	39	77724-9	39	77824-9	49	80132-9	25	80232-7	25	8217-4v	133
777142-6	39	77724-9TT	39	778252-6	49	80132-9TT	25	80232-9	25	8217-6v	133
777142-6TT	39	77725-10	39	77825-6	49	8013-4	25	80232-9TT	25	8217-7v	133
777142-7	39	77725-2	39	78132-4	113	8013-4TT	25	8023-4	25	8217-9v	133
777142-9	39	777252-10	39	78132-6	113	8013-6	25	8023-4TT	25	82272-4v	133
777142-9TT	39	777252-2	39	78132-7	113	8013-6TT	25	8023-6	25	82272-6v	133

Index by product catalog number

Cat.No.	Page	Cat.No.	Page	Cat.No.	Page	Cat.No.	Page	Cat.No.	Page	Cat.No.	Page
82272-7v	133	900602s	207	9018320	246	9033053	285	9135523	240	9217100	220
82272-9v	133	900604	304	9018323	246	9033070	285	9135551	239	9217102	220
8227-4v	133	900604s	207	9018361	246	9033071	285	9135552	240	9217144	220
8227-6v	133	900605	304	9021	96	9033072	285	9135653	240	9218090	221
8227-7v	133	900605s	207	9021g	96	9033073	285	913-6	61	9218145	221
8227-9v	133	900606	304	9022	96	9033-1	284	913-7	61	9218654	221
8430v	95	900606s	207	9022g	96	9033999	284	913-9	61	9223-6	65
843-4v	95	900607	304	9025034	234	9034001	274	914-10	61	9223-6f	65
843-6v	95	900607s	207	9025036	234	9034002	274	914-2	61	9223-6fw	67
843-9v	95	900608	304	90250-6	181	9034003	274	914-4	61	9223-6w	65
844-4v	95	900608s	207	9025162	234	9034004	274	914-6	61	9224-6	65
844-6v	95	900609	304	9025512	234	9034005	274	914-7	61	9224-6f	65
844-9v	95	900609s	207	9025515	234	9034006	274	914-9	61	9224-6fw	67
845-4v	95	900610	304	9025521	234	9034007	274	915-10	61	9224-6w	65
845-6v	95	900610s	207	9025540	234	9034008	274	915-2	61	9224-9	65
845-9v	95	900612	304	9025571	234	9034009	274	915-4	61	9224-9f	65
853009286	207	900612s	207	9025612	234	9034010	274	915-6	61	9224-9fw	67
854009285	207	900613	304	9025652	234	9034011	274	915-7	61	9224-9w	65
855-4v	95	900613s	207	9025656	234	9034030	275	915-9	61	9225-6	65
855-6v	95	900618	304	9028312	231	9034031	275	917-4v	135	9225-6f	65
855-9v	95	900618s	207	9028514	231	9034032	275	917-6v	135	9225-6fw	67
86152-6	47	9006504	305	9028514	231	9034033	275	917-7v	135	9225-6w	65
8615-6	47	9006504s	207	9028662	231	9034034	275	917-9v	135	9226961	180
86242-6	47	9006506	305	9028738	231	9034050	275	9213-6	65	9227142	218
86242-9	47	9006506s	207	9028753	231	9034051	275	9213-6f	65	92271649	206
8624-6	47	9006507	305	9028754	231	9034052	275	9213-6fw	67	9227354	218
8624-9	47	9006507s	207	9029100	109	9034053	275	9213-6w	65	9227509	218
86252-6	47	9006508	305	9029541	231	9034054	275	9214-6	65	9227520	218
8625-6	47	9006508s	207	9029572	231	9034055	275	9214-6f	65	9227746	218
86300	97	9006509	305	9029755	231	9080001	291	9214-6fw	67	9227751	218
86300g	97	9006509s	207	903	96	9080002	291	9214-6w	65	9228061	219
8630v	95	9006510	305	9030004	272	9080003	291	9214-9	65	9228076	219
863-4v	95	9006510s	207	9030010	272	9080005	291	9214-9f	65	9228086	219
863-6v	95	9006511	305	9030014	272	9081001	292	9214-9fw	67	9228091	219
863-9v	95	9006511s	207	9030020	272	9081002	292	9214-9w	65	9228096	219
864-4v	95	9006512	305	9030030	272	9081003	292	9215-6	65	9228103	219
864-6v	95	9006512s	207	9030040	273	9081802	292	9215-6f	65	923-10	61
864-9v	95	9006513	305	9030109	273	9082001	293	9215-6fw	67	923-2	61
865-4v	95	9006513s	207	9030117	273	9082002	293	9215-6w	65	923-4	61
865-6v	95	9006514	305	9030119	273	9082003	293	9216011	260	923-6	61
865-9v	95	9006514s	207	9030129	273	913-10	61	9216027	222	923-7	61
875-4v	95	9006518	305	9030204	273	913-2	61	9216051	260	923-9	61
875-6v	95	9006518s	207	9030206	272	913-4	61	9216052	260	92401543	206
875-9v	95	9007	143	9031003	286	9134029	237	9216066	260	9240539	217
88300	96	9009	143	9031022	286	9134124	270	9216140	222	9240544	217
8830v	95	901025	97	9031122	286	9134194	237	9216150	262	9240722	217
883-4v	95	901026	97	9031132	286	9134505	237	9216210	193	9240730	217
883-6v	95	9013031	242	9031598	286	9134518	270	9216211	193	9240776	217
883-9v	95	9013039	242	9032009	287	9134520	237	9216212	193	924-10	61
884-4v	95	9013042	270	9032010	287	9134532	270	9216233	222	924-2	61
884-6v	95	9013329	242	9032011	286	9135014	239	9216237	222	924-4	61
884-9v	95	9013330	270	9033001	284	9135110	239	9216276	222	924-6	61
885-4v	95	9014010	270	9033002	284	9135112	239	9216376	222	924-7	61
885-6v	95	9014120	242	9033003	284	9135114	239	9216451	263	924-9	61
885-9v	95	90150-6	181	9033004	284	9135123	240	9216452	263	925-10	61
895-4v	95	9017037	244	9033005	284	9135151	239	9216453	264	925-2	61
895-6v	95	9017050	270	9033006	284	9135153	240	9216631	180	925-4	61
895-9v	95	9017101	244	9033007	284	9135312	239	9216635	180	925-6	61
9004001	271	9017115	270	9033008	284	9135314	239	9216645	180	925-7	61
9004002	271	9018012	246	9033030	285	9135321	239	9217001	220	925-9	61
9004004	271	9018112	246	9033031	285	9135323	239	9217005	220	927-4v	135
9004006	271	9018114	246	9033032	285	9135361	239	9217019	220	927-6v	135
9004012	271	9018161	246	9033050	285	9135510	239	9217035	220	927-7v	135
900404	271	9018312	246	9033051	285	9135511	240	9217055	220	927-9v	135
900602	304	9018314	246	9033052	285	9135512	240	9217090	220	9430024	277

Index by product catalog number

Cat.No.	Page	Cat.no.	Page	Cat.No.	Page	Cat.No.	Page	Cat.No.	Page	Cat.No.	Page
9430050	277	9437413	277	9514-4	29	96061450	69	ts1252g	51		
9430052	206	9437420	180	9514-6	29	960614501	69	ts167s	80		
9430053	206	9437430	180	9514-7	29	96061451	69	ts327s	80		
9430054	206	9437454	277	9514-9	29	96061452	69	ts613g	51		
9430155	276	9437560	277	9515-10	29	96061541	69	ts614g	51		
9430301	277	9437633	180	9515-2	29	96061542	69	ts615g	51		
9430311	277	9441010	261	9515-4	29	96061550	69	ts623g	51		
9430343	277	9441050	261	9515-6	29	960615501	69	ts625g	51		
9430350	277	9441051	261	9515-7	29	96061551	69	ts635g	51		
9430401	276	9441065	261	9515-9	29	96061552	69	ts645g	51		
9430402	276	9441070	261	9517-4v	131	96062341	69	ts7632g	51		
9430406	276	9441075	261	9517-6v	131	96062342	69	ts9000g	304		
9430409	276	9441480	206	9517-7v	131	96062350	69				
9430411	276	9473012	259	9517-9v	131	96062351	69				
9430412	276	9473070	259	95213-6	29	96062352	69				
9430429	276	9473071	259	95214-6	29	96062441	69				
9430439	276	9473219	259	95214-9	29	96062442	69				
9430452	276	9473274	259	95215-6	29	96062450	69				
9430453	276	9473371	259	95223-6	29	960624501	69				
9430455	276	9473377	259	95224-6	29	96062451	69				
9430476	277	9473400	263	95224-9	29	96062452	69				
9430477	277	9473401	263	95225-6	29	96062541	69				
9430478	277	9473435	259	9523-10	29	96062542	69				
9430479	277	9473487	259	9523-2	29	96062550	69				
9430498	277	9473814	266	9523-4	29	960625501	69				
9430715	276	9474027	258	9523-6	29	96062551	69				
9430718	276	94741367	206	9523-7	29	96062552	69				
9430719	276	94741409	263	9523-9	29	96200015	266				
9430721	276	9474144	258	9524-10	29	9620664	266				
9432000	178	9474154	258	9524-2	29	9620665	266				
9432001	178	9474162	262	9524-4	29	9620676	266				
9432002	178	9474164	262	9524-6	29	9620677	266				
9432003	178	9474166	262	9524-7	29	9620684	266				
9432004	178	9474176	262	9524-9	29	9620694	266				
9432006	178	9474203	258	9525-10	29	9620695	266				
9432007	178	94742409	263	9525-2	29	9754100	109				
94325000	205	9474320	258	9525-4	29	9755090	109				
94325001	205	9474410	264	9525-6	29	9755091	109				
94325002	205	9474540	262	9525-7	29	9755095	109				
94325003	205	9474584	258	9525-9	29	9755096	109				
94325102	178	9474586	258	9527-4v	131	9755098	109				
94325103	178	9474590	258	9527-6v	131	9755099	109				
94326000	205	9474592	258	9527-7v	131	9755100	109				
94326001	205	9502413	264	9527-9v	131	9755101	109				
94326002	205	9502419	264	9545001	216	9755102	109				
94326003	205	9502421	264	9545009	216	9755103	109				
94326102	178	9502422	264	9605030	248	9755104	109				
94326103	178	9502442	264	9605105	248	9755105	109				
9433020	179	9502443	264	9605150	248	980901506204	181				
9433100	143	9504300	256	9605153	248	9809051	181				
9433100	179	9504450	256	9605155	248	9848030	223				
9433101	179	9504524	262	9605159	248	9848050	223				
9433102	179	9504528	262	9605303	248	9848071	180				
9433103	179	9504532	256	9605307	248	9848233	223				
9433160	179	9504540	257	9605317	248	9848250	288				
9433170	179	9504560	257	9605320	248	9848251	288				
9433180	179	9504730	257	9605351	248	9848715	180				
9434100	143	9513-10	29	9605361	248	d105-0	159				
9434100	179	9513-2	29	96061341	69	d105-05	159				
9434200	179	9513-4	29	96061342	69	tf9091	97				
9436422	180	9513-6	29	96061350	69	tf9091g	97				
9436432	180	9513-7	29	96061351	69	tf9092	97				
9437113	277	9513-9	29	96061352	69	tf9092g	97				
9437114	277	9514-10	29	96061441	69	ti0007s	305				
9437125	143	9514-2	29	96061442	69	ti0207	305				

Request form for PCE distribution boxes

Request for pcs. PCE distribution boxes:

Customer/Customer#	<input type="text"/>	Request number	<input type="text"/>
Building project:	<input type="text"/>	Project number:	<input type="text"/>








1. Enclosure version:

Enclosure type:	<input checked="" type="checkbox"/> Wall mounted	<input checked="" type="checkbox"/> Mobile	<input checked="" type="checkbox"/> Hanging distribution
Enclosure material:	<input checked="" type="checkbox"/> Rubber	<input checked="" type="checkbox"/> Plastic	
Protection degree:	<input checked="" type="checkbox"/> IP54	<input checked="" type="checkbox"/> IP67	Enclosure type (if known): <input type="text"/>

2. Connection:

Wall-/Hangig distribution	<input checked="" type="checkbox"/> Supply from top	<input checked="" type="checkbox"/> Supply from bottom					
Cable entry:	<input type="text" value="#"/> M16	<input type="text" value="#"/> M20	<input type="text" value="#"/> M25	<input type="text" value="#"/> M32	<input type="text" value="#"/> M40	<input type="text" value="#"/> M50	<input type="text" value="#"/> M63
Main terminal (mm ²):	<input type="text"/>	<input checked="" type="checkbox"/> Wiring through					
Mobile distribution:	<input checked="" type="checkbox"/> Flanged plug	<input type="text"/>					
	<input checked="" type="checkbox"/> Cable entry	<input type="text" value="#"/> (m) Cable with plug	Cable type: <input type="text"/>				

3. Equipment / protection:

Type of sockets:			Miniature circuit breaker (MCB):				Neozed:		others:
Qty.	Type / Amp. / Poles / Voltage	Qty.	A/poles	Type	Type	Qty.	Size		
 #	Safety socket 16A 2p+PE 250V	#	16A 1p	<input checked="" type="checkbox"/> B	<input checked="" type="checkbox"/> C	#	D01 / 1p		
 #	CEE 16A 3p 230V	#	16A 1p	<input checked="" type="checkbox"/> B	<input checked="" type="checkbox"/> C	#	D01 / 1p		
 #	CEE 16A 5p 400V	#	16A 3p	<input checked="" type="checkbox"/> B	<input checked="" type="checkbox"/> C	#	D01 / 3p		
 #	CEE 32A 5p 400V	#	32A 3p	<input checked="" type="checkbox"/> B	<input checked="" type="checkbox"/> C	#	D02 / 3p		
 #	CEE 63A 5p 400V	#	63A 3p	<input checked="" type="checkbox"/> B	<input checked="" type="checkbox"/> C	#	D02 / 3p		
 #	CEE 16A 2p 24V								
 #	CEE 16A 2p 42V								

Residual current protective device (RCD)	<input type="text" value="#"/> 25A 2p 0,03A	<input type="text" value="#"/> 40A 4p 0,03A	<input type="text" value="#"/> 63A 4p 0,03A
---	---	---	---

Remark/Others:

PCE ONLINE



- ■ ■ NEWS, PRODUCTS, COMPANY, CONTACT, SERVICE, INFORMATION, ...

Visit us at:

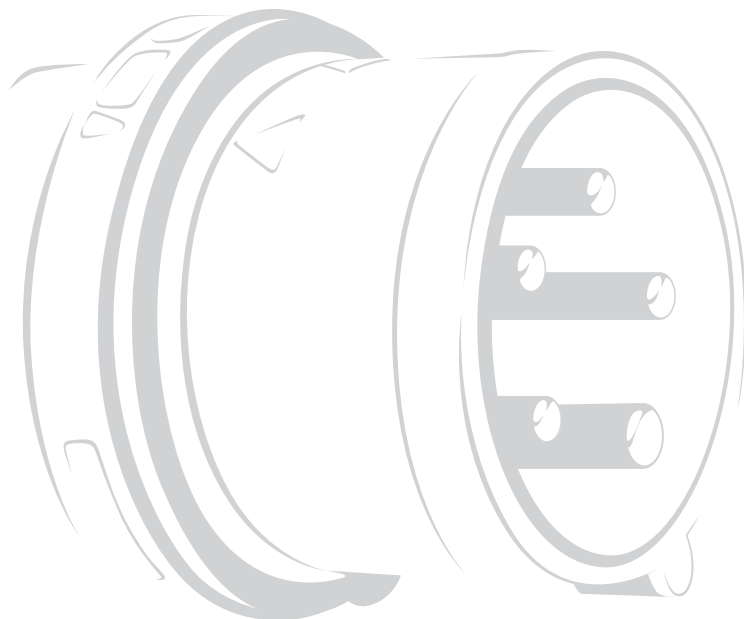
- ■ ■ <http://www.pcelectric.at>



www.pcelectric.at

- ■ PCE online catalog with complete product line
- ■ Technical documentation and accompanying drawings
- ■ Information on brand new products
- ■ Prospectus material, data sheets and product pictures
- ■ Agenda, schedules and information on PCE

PCE WORLDWIDE



CONNECTION TO THE FUTURE

PCE

Connection
to the future

www.pcelectric.at

PC Electric GesmbH

Diesseits 145

4973 St. Martin im Innkreis

AUSTRIA

TEL +43 7751 61220

FAX +43 7751 6969

office@pcelectric.at

