



## **CARAVAN PLUGS AND SOCKETS**

## Caravan plugs and sockets

PCE caravan devices are perfectly designed for the use on camp sites, caravan and marinas.

- 16A, 3-pole, 6h, 230V
- IP rating: IP44
- Contacts: brass or nickel-plated
- Solid design
- Different versions available

### Caravan products

- plug and connector
- flanged socket lockable
- wall mounted plug
- angled plug, angled connector
- adapters
- distribution products
- energy pillars (see page 290)



# Caravan plugs and sockets for camping areas



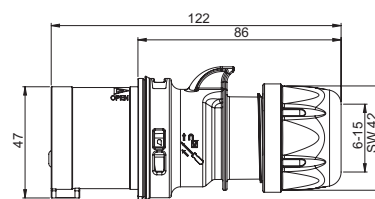
## Shark Caravan Plug

- 16A 3p 230V
- contacts: brass
  - to order nickel-plated contacts please add a "v" e.g. 013-6v
- technical data see Plugs on page 20

IP44 splashproof

013-6

pack.unit: 10



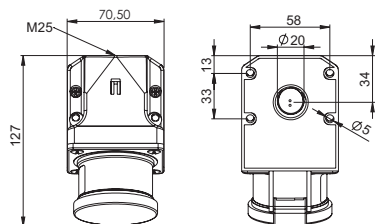
## Caravan Wall mounted plug

- 16A 3p 230V
- contacts: brass
  - to order nickel-plated contacts please add a "v" e.g. 513-6dv
- with hinged lid and gasket
- technical data see Wall mounted plugs page 26

IP44 splashproof

513-6d

pack.unit: 10



height= 92mm  
angle= 15°



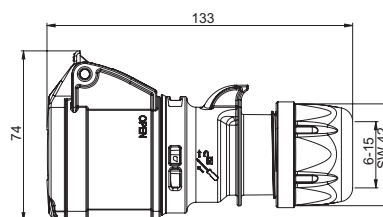
## Shark Caravan Connector

- 16A 3p 230V
- contacts: brass
  - to order nickel-plated contacts please add a "v" e.g. 213-6v
- technical data see connectors on page 52

IP44 splashproof

213-6

pack.unit: 10



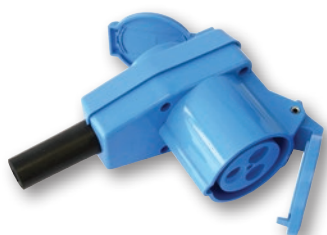
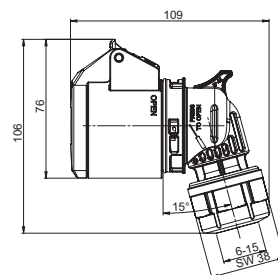
## Caravan Angled connector

- 16A 3p 230V
- contacts: brass

IP44 splashproof

8213-6

pack.unit: 10



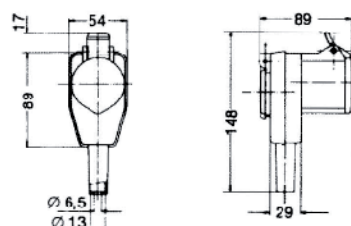
## Caravan Angled connector with safety socket

- 16A 3p 230V
- contacts: brass

IP44 splashproof

8213-Do

pack.unit: 10

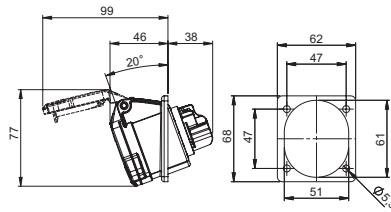




## Flanged socket sloping lockable

- 16A 3p 230V
- Flange 62 x 68 - fixing center 47 x 47 mm
- lockable with padlock

**IP44** splashproof



**413-6f66**

pack.unit: 10



## Caravan Adapter

- with safety socket acc. Aust./German system
- also available with Belg./French and British socket outlet
- nickel-plated contacts

**IP44** splashproof

**Entry:**  
CEE-plug16A 3p 230V

**Outlet:**  
1 safety socket 16A 2p+E 250V

**9433100\***

pack.unit: 10



## Caravan Adapter

- plug for domestic use with two earthing systems / CEE-socket outlet
- nickel-plated contacts

**IP20**

**Entry:**  
1 plug (two earthing system) 2p+E 250V

**Outlet:**  
1 CEE-socket 16A 3p 230V

**9434100\***

pack.unit: 10



## Caravan Adapter with cable

- 16A 3p 230V

**IP44** splashproof

80cm cable H07RN-F 3G1,5 with CEE-plug 16A 3p 230V and solid rubber connector acc. to Austr./ German system 16A 2p+E 250V

**9007**

pack.unit: 10



80cm cable H07RN-F 3G1,5 with solid rubber safety plug (two earthing system) 16A 2p+E 250V and CEE-connector 16A 3p 230V

**9009**

pack.unit: 10



## Caravan Combination Series St. Anton

**IP44** splashproof

**Entry:**  
1,5m cable H07RN-F3G1,5 with CEE-plug 16A 3p 230V

**Outlet:**  
1 safety socket acc. Aust./German system 16A 2p+E 250V

**Protection:**  
1 RCD 25A 0,03A

**9437125**

pack.unit: 1



\* Export version (in Austria and Germany not allowed)

