



CEE WALL AND FLANGED SOCKETS
16A - 125A

CEE wall and flanged sockets

Wall sockets

Page

58



Flanged sockets straight

Page

70



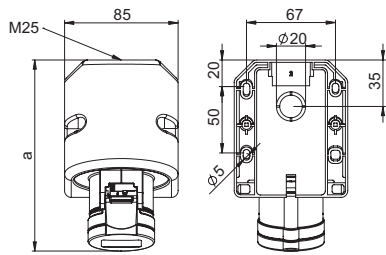
Flanged sockets sloping

Page

80



Wall sockets



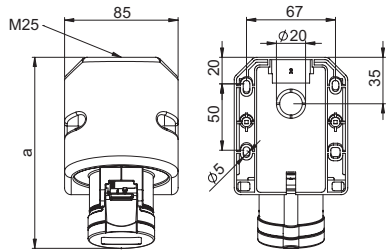
b=height
angle=15°

Wall socket IP44

	16 Amp			32 Amp		
	3	4	5	3	4	5
Poles	3	4	5	3	4	5
a	142	145	144	155	155	157
b	97	98	104	106	106	111
M	25	25	25	25	25	25
Connection type: Screw terminal						
Wire flexible [mm ²]	1-2,5			2,5-6		
solid [mm ²]	1-4			2,5-10		
Contact screws [Ncm]	100 Ncm			110 Ncm		
Weight [g]	226	240	259	274	291	318

- with screw terminals
- housing material: PA6
- contacts: brass
 - to order nickel-plated contacts please add a "v" e.g. 115-6v
- top and rear entry
- incl. threaded cable grommet

IP44 splashproof



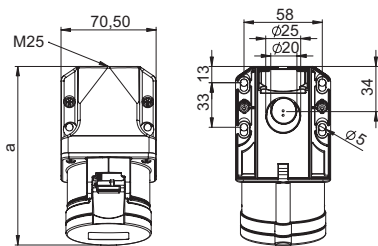
b=height
angle=15°

Turbo Twist Wall socket IP44

	16 Amp			32 Amp		
	3	4	5	3	4	5
Poles	3	4	5	3	4	5
a	142	145	144	155	155	157
b	97	98	104	106	106	111
M	25	25	25	25	25	25
Connection type: Screwless terminal						
Wire flexible [mm ²]	1-2,5			2,5-6		
solid [mm ²]	1-4			2,5-10		
Weight [g]	228	240	264	274	290	319

- screwless connection technology
- housing material: PA6
- contacts: brass
 - to order nickel-plated contacts please add a "v" e.g. 115-6TTv
- top and rear entry
- incl. threaded cable grommet

IP44 splashproof



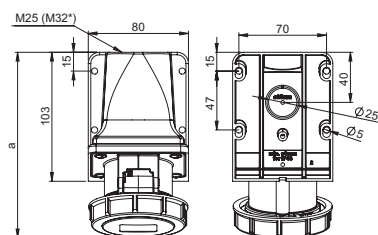
b=height
angle=15°

Wall socket IP44

	16 Amp			32 Amp		
	3	4	5	3	4	5
Poles	3	4	5	3	4	5
a	132	133	133	145	145	145
b	94	97	100	103	103	107
M	25	25	25	25	25	25
Connection type: Screw terminal						
Wire flexible [mm ²]	1-2,5			2,5-6		
solid [mm ²]	1-4			2,5-10		
Contact screws [Ncm]	100 Ncm			110 Ncm		
Weight [g]	202	214	233	249	365	292

- with screw terminals
- housing material: PA6
- contacts: brass
 - to order nickel-plated contacts please add a "v" e.g. 115-6kv
 - to order Turbo Twist design (screwless connection technology) please add a „TT“ e.g. 115-6kTT
- top and rear entry
- incl. threaded cable grommet

IP44 splashproof



b=height
angle=15°

Wall socket IP67

	16 Amp			32 Amp		
	3	4	5	3	4	5
Poles	3	4	5	3	4	5
a	146	148	148	161	161	163
b	96	99	102	108	108	112
M*	25	25	25	25	25	25
Connection type: Screw terminal						
Wire flexible [mm ²]	1-2,5			2,5-6		
solid [mm ²]	1-4			2,5-10		
Contact screws [Ncm]	100 Ncm			110 Ncm		
Weight [g]	226	241	275	298	314	351

- with screw terminals
- housing material: PA6
- contacts: brass
 - to order nickel-plated contacts please add a "v" e.g. 1152-6v
 - to order Turbo Twist design (screwless connection technology) please add a „TT“ e.g. 1152-6TT
- top and rear entry
- incl. threaded bung

IP67 watertight

*M32 optional on request available

110V~

50/60Hz
4h

230V~

50/60Hz
3p=6h
4p+5p=9h

400V~

50/60Hz
3p=9h
4p+5p=6h

500V~

50/60Hz
7h

>50-500V~

100-300Hz
10h

>50-500V~

301-500Hz
2h

Amp.	Poles	pack. unit	Cat.No.	Cat.No.	Cat.No.	Cat.No.	Cat.No.	Cat.No.
------	-------	------------	---------	---------	---------	---------	---------	---------

16	3	10	113-4	113-6	113-9	113-7	113-10	113-2
16	4	10	114-4	114-9	114-6	114-7	114-10	114-2
16	5	10	115-4	115-9	115-6	115-7	115-10	115-2
32	3	10	123-4	123-6	123-9	123-7	123-10	123-2
32	4	10	124-4	124-9	124-6	124-7	124-10	124-2
32	5	10	125-4	125-9	125-6	125-7	125-10	125-2



113-6

16	3	10	113-4TT	113-6TT	113-9TT			
16	4	10	114-4TT	114-9TT	114-6TT			
16	5	10	115-4TT	115-9TT	115-6TT			
32	3	10	123-4TT	123-6TT	123-9TT			
32	4	10	124-4TT	124-9TT	124-6TT			
32	5	10	125-4TT	125-9TT	125-6TT			



113-6TT

16	3	10	113-4k	113-6k	113-9k	113-7k	113-10k	113-2k
16	4	10	114-4k	114-9k	114-6k	114-7k	114-10k	114-2k
16	5	10	115-4k	115-9k	115-6k	115-7k	115-10k	115-2k
32	3	10	123-4k	123-6k	123-9k	123-7k	123-10k	123-2k
32	4	10	124-4k	124-9k	124-6k	124-7k	124-10k	124-2k
32	5	10	125-4k	125-9k	125-6k	125-7k	125-10k	125-2k



115-6k

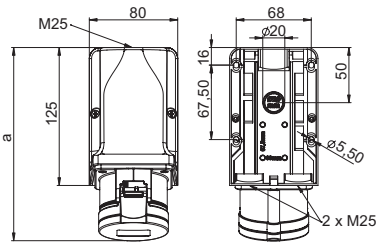
16	3	5	1132-4	1132-6	1132-9	1132-7	1132-10	1132-2
16	4	5	1142-4	1142-9	1142-6	1142-7	1142-10	1142-2
16	5	5	1152-4	1152-9	1152-6	1152-7	1152-10	1152-2
32	3	5	1232-4	1232-6	1232-9	1232-7	1232-10	1232-2
32	4	5	1242-4	1242-9	1242-6	1242-7	1242-10	1242-2
32	5	5	1252-4	1252-9	1252-6	1252-7	1252-10	1252-2



1152-6



Wall sockets



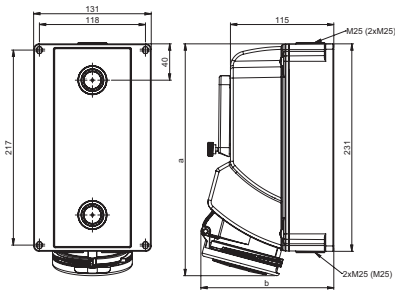
b=height
angle=15°

Wall socket IP44

Poles	16 Amp			32 Amp		
	3	4	5	3	4	5
a	175	176	176	188	188	188
b	127	130	133	136	136	141
M	3x25	3x25	3x25	3x25	3x25	3x25
Connection type: Screw terminal						
Wire flexible [mm ²]	1-2,5			2,5-6		
solid [mm ²]	1-4			2,5-10		
Contact screws [Ncm]	100 Ncm			110 Ncm		
Weight [g]	291	304	322	338	355	382

- with screw terminals
- **housing for wiring through**
- housing material: PA6
- contacts: brass
 - to order nickel-plated contacts please add a "v" e.g. 915-6v
 - to order Turbo Twist design (screwless connection technology) please add a „TT“ e.g. 915-6TT
- top, 2x bottom or rear entry
- incl. threaded cable grommet

IP44 splashproof



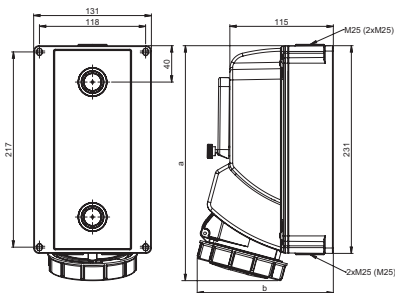
Wall socket with window IP44

Poles	16 Amp			32 Amp		
	3	4	5	3	4	5
a	249	249	249	259	259	259
b	141	141	141	142	142	148
M*	3x25	3x25	3x25	3x25	3x25	3x25
Connection type: Screw terminal						
Wire flexible [mm ²]	1-2,5			2,5-6		
solid [mm ²]	1-4			2,5-10		
Weight [g]	917	922	967	972	985	1033

- with screw terminals
- housing material: PC/ABS
- contacts: nickel-plated contacts
- top, bottom or rear entry
- with DIN-rail
- window for 5 modules
- incl. threaded bung

IP44 splashproof

* Option: M32 or closed



Wall socket with window IP67

Pole	16 Amp			32 Amp		
	3	4	5	3	4	5
a	253	253	253	259	259	259
b	141	141	141	145	145	153
M*	3x25	3x25	3x25	3x25	3x25	3x25
Connection type: Screw terminal						
Wire flexible [mm ²]	1-2,5			2,5-6		
solid [mm ²]	1-4			2,5-10		
Weight [g]	952	957	1002	1007	1020	1068

- with screw terminals
- housing material: PC/ABS
- contacts: nickel-plated contacts
- top, bottom or rear entry
- with DIN-rail
- window for 5 modules
- incl. threaded bung

IP67 watertight

* Option: M32 or closed

Amp.	Poles	pack-unit	110V~	230V~	400V~	500V~	>50-500V~	>50-500V~
			50/60Hz 4h	50/60Hz 3p=6h 4p+5p=9h	50/60Hz 3p=9h 4p+5p=6h	50/60Hz 7h	100-300Hz 10h	301-500Hz 2h
			Cat.No.	Cat.No.	Cat.No.	Cat.No.	Cat.No.	Cat.No.
16	3	5	913-4	913-6	913-9	913-7	913-10	913-2
16	4	5	914-4	914-9	914-6	914-7	914-10	914-2
16	5	5	915-4	915-9	915-6	915-7	915-10	915-2
32	3	5	923-4	923-6	923-9	923-7	923-10	923-2
32	4	5	924-4	924-9	924-6	924-7	924-10	924-2
32	5	5	925-4	925-9	925-6	925-7	925-10	925-2



913-6

16	3	1	75133-4	75133-6	75133-9	75133-7
16	4	1	75143-4	75143-9	75143-6	75143-7
16	5	1	75153-4	75153-9	75153-6	75153-7
32	3	1	75233-4	75233-6	75233-9	75233-7
32	4	1	75243-4	75243-9	75243-6	75243-7
32	5	1	75253-4	75253-9	75253-6	75253-7



75253-6

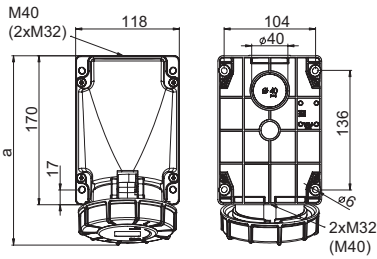
16	3	1	751323-4	751323-6	751323-9	751323-7
16	4	1	751423-4	751423-9	751423-6	751423-7
16	5	1	751523-4	751523-9	751523-6	751523-7
32	3	1	752323-4	752323-6	752323-9	752323-7
32	4	1	752423-4	752423-9	752423-6	752423-7
32	5	1	752523-4	752523-9	752523-6	752523-7



752523-6



Wall sockets



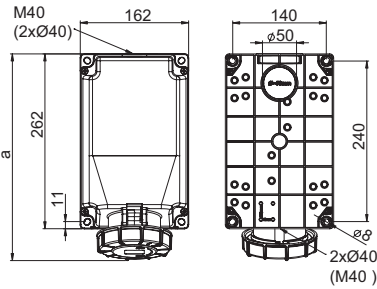
b=height
angle=15°

Power Twist Wall socket IP66/67

	63 Amp		
Poles	3	4	5
a	213	213	213
b	173	173	173
Connection type: Contact frame with screws			
Wire flexible [mm ²]	6-16		
solid [mm ²]	6-25		
Contact screws [Ncm]	200 Ncm		
Weight [g]	820	869	923

- contact frame with screws
- housing material: PC/ABS
- contacts: brass with lamellar contact CuBe
 - to order with pilot contact please add a „5“ e.g. 1335-6 (see page 10)
 - to order with pilot contact system (PCS) please add a „6“ e.g. 1336-6 (see page 10)
- top, bottom or rear entry
- housing can be rotated by 180°
- incl. threaded bung
- cable-glands see accessories page 51

IP66/67 watertight
IP44 on request



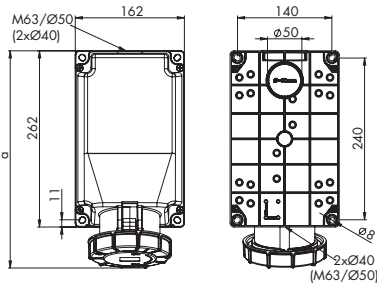
b=height
angle=15°

Power Twist Wall socket IP66/67

	63 Amp		
Poles	3	4	5
a	306	306	306
b	195	195	195
Connection type: Contact frame with screws			
Wire flexible [mm ²]	6-16		
solid [mm ²]	6-25		
Contact screws [Ncm]	200 Ncm		
Weight [g]	1360	1409	1463

- contact frame with screws
- housing material: PC/ABS
- contacts: brass with lamellar contact CuBe
 - to order with pilot contact please add a „5“ e.g. 13557-6 (see page 10)
 - to order with pilot contact system (PCS) please add a „6“ e.g. 13567-6 (see page 10)
- top, bottom or rear entry
- housing can be rotated by 180°
- incl. threaded bung
- cable-glands see accessories page 51

IP66/67 watertight
IP44 on request



b=height
angle=15°

Power Twist Wall socket IP66/67

	125 Amp		
Poles	3	4	5
a	322	322	322
b	205	205	205
Connection type: Contact frame with screws			
Wire flexible [mm ²]	16-50		
solid [mm ²]	16-50		
Contact screws [Ncm]	450 Ncm		
Weight [g]	1745	1752	1852

- contact frame with hexag socket screws
- housing material: PC/ABS
- contacts: brass with lamellar contact CuBe
 - to order with pilot contact please add a „5“ e.g. 1455-6 (see page 10)
 - to order with pilot contact system (PCS) please add a „6“ e.g. 1456-6 (see page 10)
- top, bottom or rear entry
- housing can be rotated by 180°
- incl. threaded bung
- cable-glands see accessories page 51

IP66/67 watertight



Advantages:

Housing can be rotated by 180° – the position of the cable entry can be chosen!

110V~

50/60Hz
4h

230V~

50/60Hz
3p=6h
4p+5p=9h

400V~

50/60Hz
3p=9h
4p+5p=6h

500V~

50/60Hz
7h

>50-500V~

100-300Hz
10h

>50-500V~

301-500Hz
2h

Amp. Poles pack-unit

Cat.No.

Cat.No.

Cat.No.

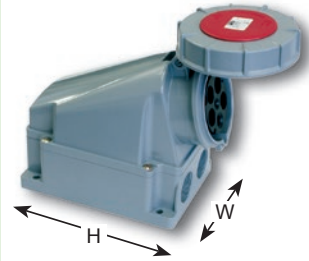
Cat.No.

Cat.No.

Cat.No.

Basic unit HxWxD = 170x118x173; 1xM40; 2xM32

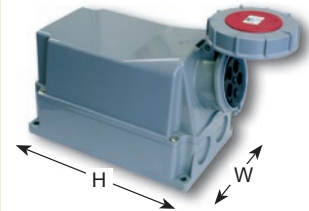
63	3	2	133-4	133-6	133-9	133-7	133-10	133-2
63	4	2	134-4	134-9	134-6	134-7	134-10	134-2
63	5	2	135-4	135-9	135-6	135-7	135-10	135-2



135-6

Basic unit HxWxD = 262x162x195; 1xM40; 2xØ40

63	3	2	1337-4	1337-6	1337-9	1337-7	1337-10	1337-2
63	4	2	1347-4	1347-9	1347-6	1347-7	1347-10	1347-2
63	5	2	1357-4	1357-9	1357-6	1357-7	1357-10	1357-2



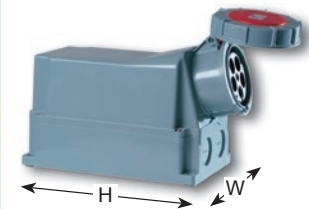
1357-6

Basic unit HxWxD = 262x162x205; 1xØ50; 2xØ40

125	3	1	143-4	143-6	143-9	143-7	143-10	143-2
-----	---	---	-------	--------------	-------	-------	--------	-------

Basic unit HxWxD = 262x162x205; 1xM63; 2xØ40

125	4	1	144-4	144-9	144-6	144-7	144-10	144-2
125	5	1	145-4	145-9	145-6	145-7	145-10	145-2



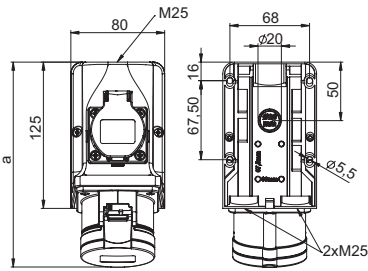
145-6



Accessories (cable glands) see page 51



Wall sockets COMBO



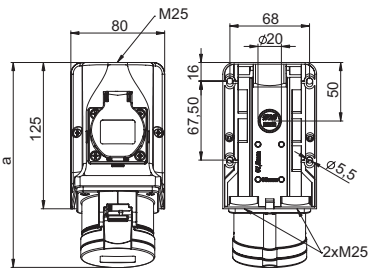
b=height
angle=15°

Wall socket COMBO IP44

	16 Amp			32 Amp		
	3	4	5	3	4	5
Poles	3	4	5	3	4	5
a	175	176	176	188	188	188
b	127	130	133	136	136	141
M	3x25	3x25	3x25	3x25	3x25	3x25
Connection type:	Screw terminal					
Wire flexible [mm ²]	1-2,5			2,5-6		
solid [mm ²]	1-4			2,5-10		
Contact screws CEE [Ncm]	100 Ncm			110 Ncm		
Screw terminals [Ncm]	120 Ncm					
Weight [g]	388	405	424	455	470	481

- with screw terminals
- wall socket with integrated safety socket according to Austrian/German system
- connecting terminals up to 10 mm²
- **ready wired**
- for Combo-wall socket 32A the safety socket is protected by fuse (10A slow)
- housing material: PA6
- contacts: brass
 - to order nickel-plated contacts please add a "v" e.g. 9215-6v
- top, 2x bottom or rear entry
- incl. threaded cable grommet

IP44 splashproof



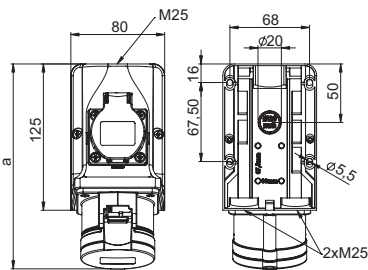
b=height
angle=15°

Wall socket COMBO IP44

	16 Amp			32 Amp		
	3	4	5	3	4	5
Poles	3	4	5	3	4	5
a	175	176	176	188	188	188
b	127	130	133	136	136	141
M	3x25	3x25	3x25	3x25	3x25	3x25
Connection type:	Screw terminal					
Wire flexible [mm ²]	1-2,5			2,5-6		
solid [mm ²]	1-4			2,5-10		
Contact screws CEE [Ncm]	100 Ncm			110 Ncm		
Screw terminals [Ncm]	120 Ncm					
Contact screws SSD [Ncm]	80 Ncm					
Weight [g]	353	370	389	410	425	436

- with screw terminals
- wall socket with integrated safety socket according to Austrian/German system
- connecting terminals up to 10 mm²
- **unwired**
- for Combo-wall socket 32A the safety socket is protected by fuse (10A slow)
- housing material: PA6
- contacts: brass
 - to order nickel-plated contacts please add a "v" e.g. 9215-6vv
- top, 2x bottom or rear entry
- incl. threaded cable grommet

IP44 splashproof



b=height
angle=15°

Wall socket COMBO IP44

	16 Amp			32 Amp		
	3	4	5	3	4	5
Poles	3	4	5	3	4	5
a	175	176	176	188	188	188
b	127	130	133	136	136	141
M	3x25	3x25	3x25	3x25	3x25	3x25
Connection type:	Screw terminal					
Wire flexible [mm ²]	1-2,5			2,5-6		
solid [mm ²]	1-4			2,5-10		
Contact screws CEE [Ncm]	100 Ncm			110 Ncm		
Screw terminals [Ncm]	120 Ncm					
Weight [g]	387	404	423	454	469	480

- with screw terminals
- wall socket with integrated safety socket according to Belgian/French system
- connecting terminals up to 10 mm²
- **ready wired**
- for Combo-wall socket 32A the safety socket is protected by fuse (10A slow)
- housing material: PA6
- contacts: brass
 - to order nickel-plated contacts please add a "v" e.g. 9215-6fv
- top, 2x bottom or rear entry
- incl. threaded cable grommet

IP44 splashproof

230V~

50/60Hz
3p=6h
4p+5p=9h

400V~

50/60Hz
3p=9h
4p+5p=6h

Amp.	Poles	pack-unit
16	3	5
16	4	5
16	5	5
32	3	5
32	4	5
32	5	5

Cat.No.

Cat.No.

9213-6
9214-9
9223-6
9224-9

9214-6
9215-6
9224-6
9225-6



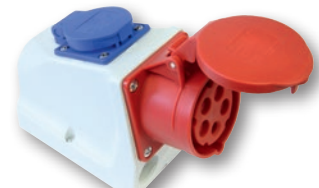
9215-6



16	3	5
16	4	5
16	5	5
32	3	5
32	4	5
32	5	5

9213-6w
9214-9w
9223-6w
9224-9w

9214-6w
9215-6w
9224-6w
9225-6w



9215-6w

16	3	5
16	4	5
16	5	5
32	3	5
32	4	5
32	5	5

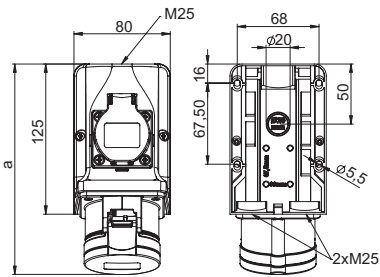
9213-6f
9214-9f
9223-6f
9224-9f

9214-6f
9215-6f
9224-6f
9225-6f



9215-6f

Wall sockets COMBO



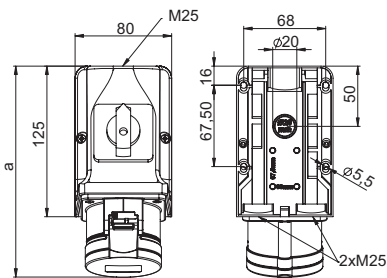
b=height
angle=15°

Wall socket COMBO IP44

Poles	16 Amp			32 Amp		
	3	4	5	3	4	5
a	175	176	176	188	188	188
b	128	130	133	137	137	143
M	3x25	3x25	3x25	3x25	3x25	3x25
Connection type:	Screw terminal					
Wire flexible [mm ²]	1-2,5			2,5-6		
solid [mm ²]	1-4			2,5-10		
Contact screws CEE [Ncm]	100 Ncm			110 Ncm		
Screw terminals [Ncm]	120 Ncm					
Contact screws SSD [Ncm]	80 Ncm					
Weight [g]	352	369	388	409	424	435

- with screw terminals
- wall socket with integrated safety socket according to Belgian/French system
- connecting terminals up to 10 mm²
- **unwired**
- for Combo-wall socket 32A the safety socket is protected by fuse (10A slow)
- housing material: PA6
- contacts: brass
 - to order nickel-plated contacts please add a "v" e.g. 9215-6fvv
- top, 2x bottom or rear entry
- incl. threaded cable grommet

IP44 splashproof



Wall socket with switch IP44

Poles	16 Amp	32 Amp
	5	5
a	176	188
b	133	143
M	3x25	3x25
Connection type:	Screw terminal	
Wire flexible [mm ²]	1-2,5	2,5-6
solid [mm ²]	1-4	2,5-10
Weight [g]	448	543

- with screw terminals
- wall socket with integrated **ON/OFF switch AC22A**
- connecting terminals up to 10 mm²
- **prewired**
- housing material: PA6
- contacts: brass
 - to order nickel-plated contacts please add a "v" e.g. 75915-6v
- top, 2x bottom or rear entry
- incl. threaded cable grommet

IP44 splashproof

230V~

50/60Hz
3p=6h
4p+5p=9h

400V~

50/60Hz
3p=9h
4p+5p=6h

Amp.	Poles	pack-unit
16	3	5
16	4	5
16	5	5
32	3	5
32	4	5
32	5	5

Cat.No.

Cat.No.

9213-6fw

9214-9fw

9214-6fw

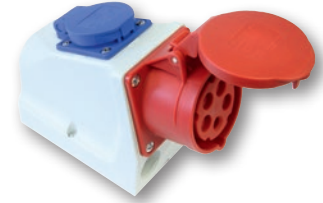
9215-6fw

9223-6fw

9224-9fw

9224-6fw

9225-6fw



9215-6fw

16	5	5
32	5	5

75915-6

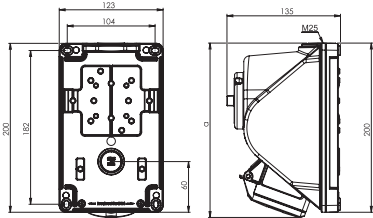
75925-6



75915-6



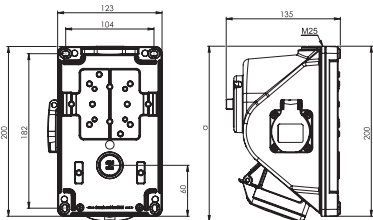
Wall sockets COMBOPOL



Wall socket COMBO-POL with flanged socket sloping

	16 Amp			32 Amp		
	3	4	5	3	4	5
Poles	3	4	5	3	4	5
a	208	209	207	211	211	212
Connection type:	Screw terminal					
Wire flexible [mm ²]	1-2,5			2,5-6		
solid [mm ²]	1-4			2,5-10		
Weight [g]	675	695	705	755	780	805

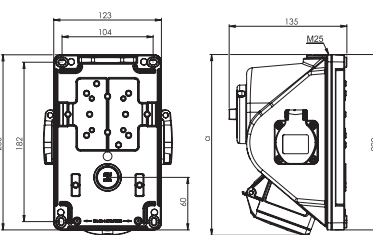
- CEE 16A 3p to 32A 5p
 - with screw terminals
 - housing material: PA6
 - contacts: nickel-plated contacts
- IP44** splashproof
IP67 on request



Wall socket COMBO-POL with flanged socket sloping

	16 Amp			32 Amp		
	3	4	5	3	4	5
Poles	3	4	5	3	4	5
a	208	209	207	211	211	212
Connection type:	Screw terminal					
Wire flexible [mm ²]	1-2,5			2,5-6		
solid [mm ²]	1-4			2,5-10		
Weight [g]	675	695	705	755	780	805

- CEE 16A 3p to 32A 5p with 1 safety socket 16A 250V
 - with screw terminals
 - housing material: PA6
 - contacts: nickel-plated contacts
 - 32A: the safety socket is protected by fuse (10A slow)
 - available also with Belg./French, Danish, British and Swiss sockets
 - design with rotary lever on request
- IP44** splashproof



Wall socket COMBO-POL with flanged socket sloping

	16 Amp			32 Amp		
	3	4	5	3	4	5
Poles	3	4	5	3	4	5
a	208	209	207	211	211	212
Connection type:	Screw terminal					
Wire flexible [mm ²]	1-2,5			2,5-6		
solid [mm ²]	1-4			2,5-10		
Weight [g]	675	695	705	755	780	805

- CEE 16A 3p to 32A 5p with 2 safety sockets 16A 250V
 - with screw terminals
 - housing material: PA6
 - contacts: nickel-plated contacts
 - 32A: the safety socket is protected by fuse (10A slow)
 - available also with Belg./French, Danish, British and Swiss sockets
 - design with rotary lever on request
- IP44** splashproof

Technical data:

- large connection area
- enclosure made of high impact resistance material
- ready wired for using
- cable entry M25 – top entry, Ø 25mm at the rear
- all external metal parts are made from stainless steel
- incl. threaded cable grommet
- at switch-off position: lockable with padlock (40 mm)
- ON / OFF switch AC 22A, 10kA acc. to EN 60947-3
- switch all outlets

Amp.	Poles	pack unit	Cat.No.	Switch	Socket outlet	Cat.No.	Switch	Socket outlet
16	3	1	96061350	0-1	0			
16	4	1	96061450	0-1	0			
16	5	1	96061550	0-1	0			
32	3	1	96062350	0-1	0			
32	4	1	96062450	0-1	0			
32	5	1	96062550	0-1	0			
with reversing switch								
16	4	1	960614501	L-0-R	0			
16	5	1	960615501	L-0-R	0			
32	4	1	960624501	L-0-R	0			
32	5	1	960625501	L-0-R	0			



96061550

16	3	1	96061351	0-1	1	austr./germ.	96061341	0-1	1	belg./french.
16	4	1	96061451	0-1	1	austr./germ.	96061441	0-1	1	belg./french.
16	5	1	96061551	0-1	1	austr./germ.	96061541	0-1	1	belg./french.
32	3	1	96062351	0-1	1	austr./germ.	96062341	0-1	1	belg./french.
32	4	1	96062451	0-1	1	austr./germ.	96062441	0-1	1	belg./french.
32	5	1	96062551	0-1	1	austr./germ.	96062541	0-1	1	belg./french.



96062551

16	3	1	96061352	0-1	2	austr./germ.	96061342	0-1	2	belg./french.
16	4	1	96061452	0-1	2	austr./germ.	96061442	0-1	2	belg./french.
16	5	1	96061552	0-1	2	austr./germ.	96061542	0-1	2	belg./french.
32	3	1	96062352	0-1	2	austr./germ.	96062342	0-1	2	belg./french.
32	4	1	96062452	0-1	2	austr./germ.	96062442	0-1	2	belg./french.
32	5	1	96062552	0-1	2	austr./germ.	96062542	0-1	2	belg./french.



96061552

Other versions on request!



Flanged sockets

PCE flanged sockets are available in many different flanges in straight or sloping version.

Versions:

- 16A / 32A / 63A / 125A
- Contacts: brass or nickel-plated
- Screw terminal or screwless version
- Different flange sizes and fixing centers
- straight or sloping versions
- lockable (16A 3p, sloping version)
- different IP ratings
- different clock positions (position of the earthing contact)

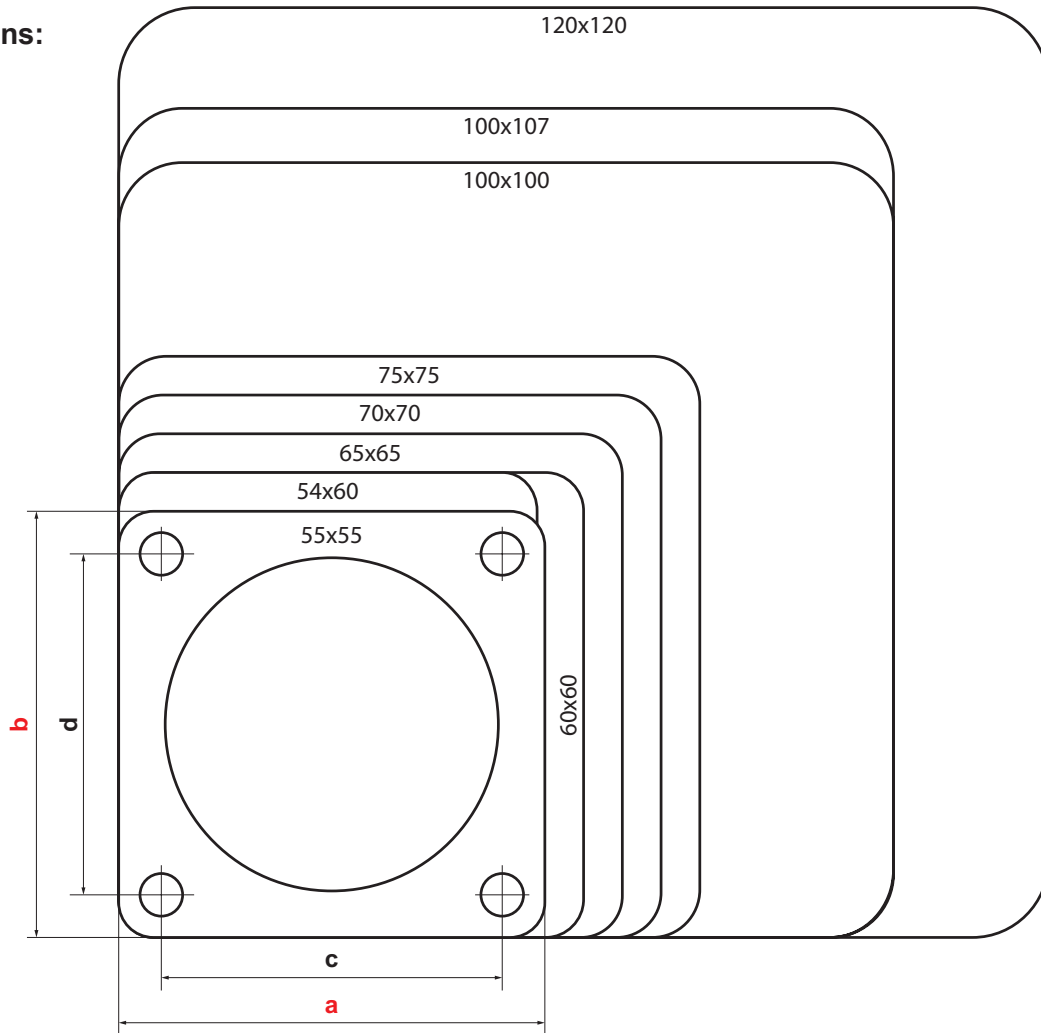
Advantages:

- solid, robust construction
- large opening angle of the lid
- screws/terminals are open when delivered
- advanced earthing contact
- contact frame with screws for 63/125A
- lamellar spring contacts for 63/125A



Flanged sockets straight

Dimensions:



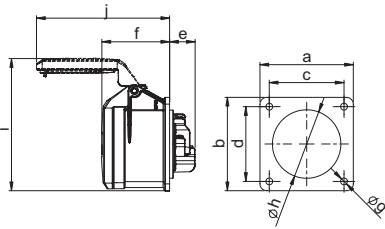
Versions:

flange		fixing center		page	16A			32A			63A			125A		
a	b	c	d	#	3p	4p	5p	3p	4p	5p	3p	4p	5p	3p	4p	5p
54	60	44	44	74-75	IP44*											
					IP67*											
55	55	44	44	74-75	IP44*											
					IP67*											
60	60	47	47	74-75	IP44*	IP44*										
					IP67*											
65	65	52	52	74-75	IP44*	IP44*										
					IP67*											
70	70	56	56	72-73	IP44*	IP44*	IP44*	IP44*	IP44*	IP44*						
					IP67*		IP67*			IP67*						
75	75	60	60	70-71	IP44*	IP44*	IP44*	IP44*	IP44*	IP44*						
					IP67*	IP67*	IP67*	IP67*	IP67*	IP67*						
100	100	80	80	76-77							IP44	IP44	IP44			
											IP67	IP67	IP67			
100	107	77	85	76-77							IP44	IP44	IP44			
											IP67	IP67	IP67			
120	120	100	100	76-77										IP67	IP67	IP67

* also available in screwless connection technology (TT)



Flanged sockets straight

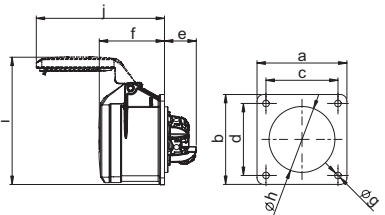


Flanged socket straight IP44

	16 Amp			32 Amp		
	3	4	5	3	4	5
Poles	3	4	5	3	4	5
Flange a x b	75	75	75	75	75	75
Fixing center c x d	60	60	60	60	60	60
e	21	21	21	23	23	23
f	55	55	55	67	67	67
g	5,5	5,5	5,5	5,5	5,5	5,5
h	43	45	55	55	55	58
i	89	104	107	112	112	108
j	101	101	107	122	122	136
Connection type:	Screw terminal					
Wire flexible [mm ²]	1-2,5			2,5-6		
solid [mm ²]	1-4			2,5-10		
Contact screws [Ncm]	100 Ncm			110 Ncm		
Weight [g]	120	132	150	167	182	210

- with screw terminals
- housing material: PA6
- contacts: brass
 - to order nickel-plated contacts please add a "v" e.g. 315-6f7v

IP44 splashproof
IP44/54 16/3 and 32/5 are splash- and dustproof

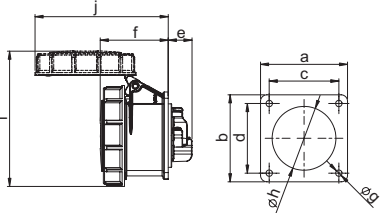


Turbo Twist Flanged socket straight IP44

	16 Amp			32 Amp		
	3	4	5	3	4	5
Poles	3	4	5	3	4	5
Flange a x b	75	75	75	75	75	75
Fixing center c x d	60	60	60	60	60	60
e	27	27	27	27	27	27
f	55	55	55	67	67	67
g	5,5	5,5	5,5	5,5	5,5	5,5
h	43	45	55	55	55	58
i	89	104	107	112	112	108
j	101	101	107	122	122	136
Connection type:	Screwless terminal					
Wire flexible [mm ²]	1-2,5			2,5-6		
solid [mm ²]	1-4			2,5-10		
Weight [g]	123	132	155	167	182	211

- screwless connection technology
- housing material: PA6
- contacts: brass
 - to order nickel-plated contacts please add a "v" e.g. 315-6TTf7v

IP44 splashproof
IP44/54 16/3; 16/5 and 32/5 are splash- and dustproof

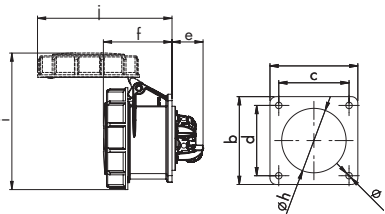


Flanged socket straight IP44

	16 Amp			32 Amp		
	3	4	5	3	4	5
Poles	3	4	5	3	4	5
Flange a x b	75	75	75	75	75	75
Fixing center c x d	60	60	60	60	60	60
e	21	21	21	23	23	23
f	56	57	59	69	69	71
g	5,5	5,5	5,5	5,5	5,5	5,5
h	43	45	55	55	55	58
i	102	108	117	122	122	130
j	101	109	115	130	130	136
Connection type:	Screw terminal					
Wire flexible [mm ²]	1-2,5			2,5-6		
solid [mm ²]	1-4			2,5-10		
Contact screws [Ncm]	100 Ncm			110 Ncm		
Weight [g]	135	153	183	206	222	260

- with screw terminals
- housing material: PA6
- contacts: brass
 - to order nickel-plated contacts please add a "v" e.g. 3152-6v

IP67 watertight

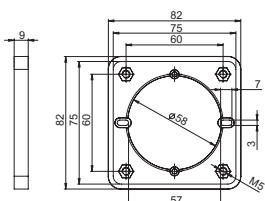


Turbo Twist Flanged socket straight IP44

	16 Amp			32 Amp		
	3	4	5	3	4	5
Poles	3	4	5	3	4	5
Flange a x b	75	75	75	75	75	75
Fixing center c x d	60	60	60	60	60	60
e	27	27	27	27	27	27
f	56	57	59	69	69	71
g	5,5	5,5	5,5	5,5	5,5	5,5
h	43	45	55	55	55	58
i	102	108	117	122	122	130
j	101	109	115	130	130	136
Connection type:	Screwless terminal					
Wire flexible [mm ²]	1-2,5			2,5-6		
solid [mm ²]	1-4			2,5-10		
Weight [g]	137	153	188	206	222	261

- screwless connection technology
- housing material: PA6
- contacts: brass
 - to order nickel-plated contacts please add a "v" e.g. 3152-6TTv

IP67 watertight

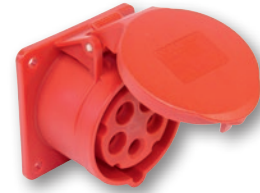


Cable conduit installation

	Intermediate flange for cable conduit installation
For CEE Flanged socket	
Flange	75x75 mm
Fixing center	60x60 mm
	Cat.No. 810-00

- suitable for CEE-flanged sockets with flange size 75x75 mm and fixing center 60x60 mm e.g. 315-6f7
- with intermediate flange, suitable for standard conduit mounting boxes

Amp.	Poles	pack. unit	110V~	230V~	400V~	500V~	>50-500V~	>50-500V~
			50/60Hz 4h	50/60Hz 3p=6h 4p+5p=9h	50/60Hz 3p=9h 4p+5p=6h	50/60Hz 7h	100-300Hz 10h	301-500Hz 2h
			Cat.No.	Cat.No.	Cat.No.	Cat.No.	Cat.No.	Cat.No.
flange 75 x 75 - fixing center 60 x 60								
16	3	10	313-4f7	313-6f7	313-9f7	313-7f7	313-10f7	313-2f7
16	4	10	314-4f7	314-9f7	314-6f7	314-7f7	314-10f7	314-2f7
16	5	10	315-4f7	315-9f7	315-6f7	315-7f7	315-10f7	315-2f7
32	3	10	323-4f7	323-6f7	323-9f7	323-7f7	323-10f7	323-2f7
32	4	10	324-4f7	324-9f7	324-6f7	324-7f7	324-10f7	324-2f7
32	5	10	325-4f7	325-9f7	325-6f7	325-7f7	325-10f7	325-2f7



315-6f7

Amp.	Poles	pack. unit	110V~	230V~	400V~
			50/60Hz 4h	50/60Hz 3p=6h 4p+5p=9h	50/60Hz 3p=9h 4p+5p=6h
			Cat.No.	Cat.No.	Cat.No.
flange 75 x 75 - fixing center 60 x 60					
16	3	10	313-4TTf7	313-6TTf7	313-9TTf7
16	4	10	314-4TTf7	314-9TTf7	314-6TTf7
16	5	10	315-4TTf7	315-9TTf7	315-6TTf7
32	3	10	323-4TTf7	323-6TTf7	323-9TTf7
32	4	10	324-4TTf7	324-9TTf7	324-6TTf7
32	5	10	325-4TTf7	325-9TTf7	325-6TTf7

TURBO TWIST
click



313-6TTf7

Amp.	Poles	pack. unit	110V~	230V~	400V~	500V~	>50-500V~	>50-500V~
			50/60Hz 4h	50/60Hz 3p=6h 4p+5p=9h	50/60Hz 3p=9h 4p+5p=6h	50/60Hz 7h	100-300Hz 10h	301-500Hz 2h
			Cat.No.	Cat.No.	Cat.No.	Cat.No.	Cat.No.	Cat.No.
flange 75 x 75 - fixing center 60 x 60								
16	3	10	3132-4	3132-6	3132-9	3132-7	3132-10	3132-2
16	4	10	3142-4	3142-9	3142-6	3142-7	3142-10	3142-2
16	5	10	3152-4	3152-9	3152-6	3152-7	3152-10	3152-2
32	3	10	3232-4	3232-6	3232-9	3232-7	3232-10	3232-2
32	4	10	3242-4	3242-9	3242-6	3242-7	3242-10	3242-2
32	5	10	3252-4	3252-9	3252-6	3252-7	3252-10	3252-2



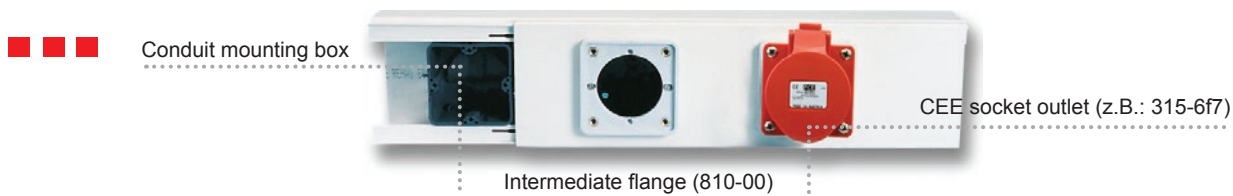
3152-6

Amp.	Poles	pack. unit	110V~	230V~	400V~
			50/60Hz 4h	50/60Hz 3p=6h 4p+5p=9h	50/60Hz 3p=9h 4p+5p=6h
			Cat.No.	Cat.No.	Cat.No.
flange 75 x 75 - fixing center 60 x 60					
16	3	10	3132-4TT	3132-6TT	3132-9TT
16	4	10	3142-4TT	3142-9TT	3142-6TT
16	5	10	3152-4TT	3152-9TT	3152-6TT
32	3	10	3232-4TT	3232-6TT	3232-9TT
32	4	10	3242-4TT	3242-9TT	3242-6TT
32	5	10	3252-4TT	3252-9TT	3252-6TT

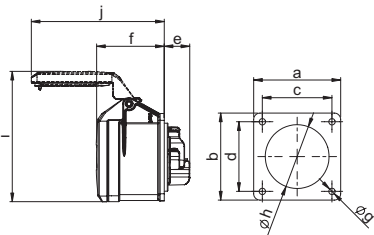
TURBO TWIST
click



3132-6TT



Flanged sockets straight

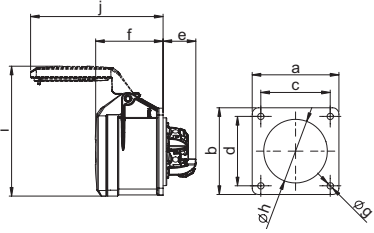


Flanged socket straight IP44

Poles	16 Amp			32 Amp		
	3	4	5	3	4	5
Flange a x b	70	70	70	70	70	70
Fixing center c x d	56	56	56	56	56	56
e	21	21	21	23	23	23
f	55	55	55	67	67	67
g	5,5	5,5	5,5	5,5	5,5	5,5
h	43	45	55	55	55	58
i	87	101	105	112	112	108
j	101	101	107	122	122	136
Connection type: Screw terminal						
Wire flexible [mm ²]	1-2,5			2,5-6		
solid [mm ²]	1-4			2,5-10		
Contact screws [Ncm]	100 Ncm			110 Ncm		
Weight [g]	115	127	141	162	178	206

- with screw terminals
- housing material: PA6
- contacts: brass
- to order nickel-plated contacts please add a "v" e.g. 315-6v

IP44 splashproof
IP44/54 16/3; 16/5 and 32/5 are splash- and dustproof

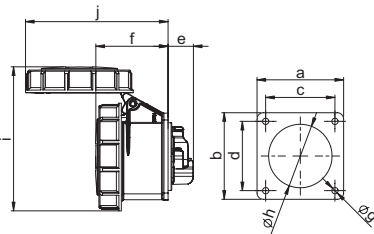


Turbo Twist Flanged socket straight IP44

Poles	16 Amp			32 Amp		
	3	4	5	3	4	5
Flange a x b	70	70	70	70	70	70
Fixing center c x d	56	56	56	56	56	56
e	27	27	27	27	27	27
f	55	55	55	67	67	67
g	5,5	5,5	5,5	5,5	5,5	5,5
h	43	45	55	55	55	58
i	87	101	105	112	112	108
j	101	101	107	122	122	136
Connection type: Screwless terminal						
Wire flexible [mm ²]	1-2,5			2,5-6		
solid [mm ²]	1-4			2,5-10		
Weight [g]	117	128	146	161	178	207

- screwless connection technology
- housing material: PA6
- contacts: brass
- to order nickel-plated contacts please add a "v" e.g. 315-6TTv

IP44 splashproof
IP44/54 16/3; 16/5 and 32/5 are splash- and dustproof

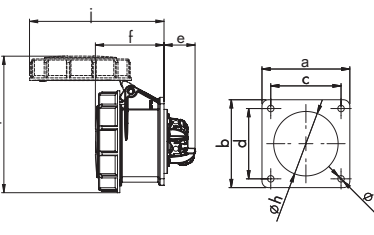


Flanged socket straight IP44

Poles	16 Amp		32 Amp
	3	5	5
Flange a x b	70	70	70
Fixing center c x d	56	56	56
e	21	21	23
f	56	59	71
g	5,5	5,5	5,5
h	43	55	58
i	102	117	130
j	101	115	136
Connection type: Screw terminal			
Wire flexible [mm ²]	1-2,5		2,5-6
solid [mm ²]	1-4		2,5-10
Contact screws [Ncm]	100 Ncm		110 Ncm
Weight [g]	130	181	225

- with screw terminals
- housing material: PA6
- contacts: brass
- to order nickel-plated contacts please add a "v" e.g. 3152-6Tf0v

IP67 watertight



Turbo Twist Flanged socket straight IP67

Poles	16 Amp		32 Amp
	3	5	5
Flange a x b	70	70	70
Fixing center c x d	56	56	56
e	27	27	27
f	56	59	71
g	5,5	5,5	5,5
h	43	55	58
i	102	117	130
j	101	115	136
Connection type: Screwless terminal			
Wire flexible [mm ²]	1-2,5		2,5-6
solid [mm ²]	1-4		2,5-10
Weight [g]	132	186	227

- screwless connection technology
- housing material: PA6
- contacts: brass
- to order nickel-plated contacts please add a "v" e.g. 3152-6TTf70v

IP67 watertight

Amp.	Poles	pack. unit	110V~ 50/60Hz 4h	230V~ 50/60Hz 3p=6h 4p+5p=9h	400V~ 50/60Hz 3p=9h 4p+5p=6h	500V~ 50/60Hz 7h	>50- 500V~ 100-300Hz 10h	>50- 500V~ 301-500Hz 2h
			Cat.No.	Cat.No.	Cat.No.	Cat.No.	Cat.No.	Cat.No.

flange 70 x 70 - fixing center 56 x 56								
16	3	10	313-4	313-6	313-9	313-7	313-10	313-2
16	4	10	314-4	314-9	314-6	314-7	314-10	314-2
16	5	10	315-4	315-9	315-6	315-7	315-10	315-2
32	3	10	323-4	323-6	323-9	323-7	323-10	323-2
32	4	10	324-4	324-9	324-6	324-7	324-10	324-2
32	5	10	325-4	325-9	325-6	325-7	325-10	325-2



315-6

flange 70 x 70 - fixing center 56 x 56					
16	3	10	313-4TT	313-6TT	313-9TT
16	4	10	314-4TT	314-9TT	314-6TT
16	5	10	315-4TT	315-9TT	315-6TT
32	3	10	323-4TT	323-6TT	323-9TT
32	4	10	324-4TT	324-9TT	324-6TT
32	5	10	325-4TT	325-9TT	325-6TT



315-6TT

flange 70 x 70 - fixing center 56 x 56								
16	3	10	3132-4f70	3132-6f70	3132-9f70	3132-7f70	3132-10f70	3132-2f70
16	5	10	3152-4f70	3152-9f70	3152-6f70	3152-7f70	3152-10f70	3152-2f70
32	5	10	3252-4f70	3252-9f70	3252-6f70	3252-7f70	3252-10f70	3252-2f70



3132-6f70

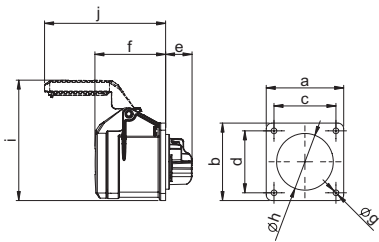
flange 70 x 70 - fixing center 56 x 56								
16	3	10	3132-4TTf70	3132-6TTf70	3132-9TTf70	3132-7TTf70	3132-10TTf70	3132-2TTf70
16	5	10	3152-4TTf70	3152-9TTf70	3152-6TTf70	3152-7TTf70	3152-10TTf70	3152-2TTf70
32	5	10	3252-4TTf70	3252-9TTf70	3252-6TTf70	3252-7TTf70	3252-10TTf70	3252-2TTf70



3132-6ttf70



Flanged sockets straight

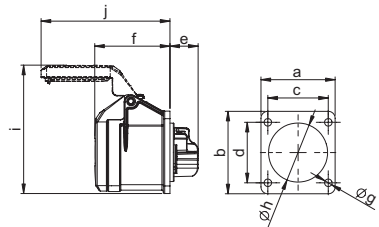


Flanged socket straight IP44

	16 Amp		16 Amp	
	3	4	3	4
Poles	3	4	3	4
Flange a x b	65	65	60	60
Fixing center c x d	52	52	47	47
e	21	21	21	21
f	55	55	55	55
g	5,5	5,5	5,5	5,5
h	43	45	43	45
i	84	99	82	99
j	101	100	101	101
Connection type:	Screw terminal			
Wire flexible [mm ²]	1-2,5			
solid [mm ²]	1-4			
Contact screws [Ncm]	100 Ncm			
Weight [g]	112	124	105	119

- with screw terminals
- housing material: PA6
- contacts: brass
 - to order nickel-plated contacts please add a "v" e.g. 314-6f0v

IP44 splashproof
IP44/54 16/3 is splash- and dustproof

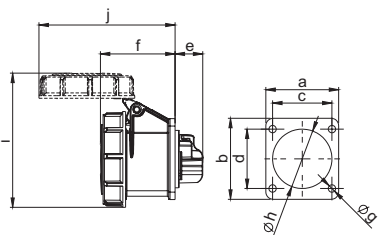


Flanged socket straight IP44

	16 Amp	
	3	3
Poles	3	3
a	54	55
b	60	55
Fixing center c x d	44	44
e	21	21
f	55	55
g	5,5	5,5
h	43	43
i	82	80
j	101	101
Connection type:	Screw terminal	
Wire flexible [mm ²]	1-2,5	
solid [mm ²]	1-4	
Contact screws [Ncm]	100 Ncm	
Weight [g]	105	103

- with screw terminals
- housing material: PA6
- contacts: brass
 - to order nickel-plated contacts please add a "v" e.g. 313-6f5v

IP44/54 splashproof and dustproof



Flanged socket straight IP67

	16 Amp			
	3	3	3	3
Poles	3	3	3	3
a	65	60	54	55
b	65	60	60	55
c	52	47	44	44
d	52	47	44	44
e	21	21	21	21
f	56	56	56	56
g	5,5	5,5	5,5	5,5
h	43	43	43	43
i	100	100	100	100
j	101	101	101	101
Connection type:	Screw terminal			
Wire flexible [mm ²]	1-2,5			
solid [mm ²]	1-4			
Contact screws [Ncm]	100 Ncm			
Weight [g]	127	123	124	120

- with screw terminals
- housing material: PA6
- contacts: brass
 - to order nickel-plated contacts please add a "v" e.g. 3132-6f0v

IP67 watertight

Amp.	Poles	pack. unit	110V~ 50/60Hz 4h	230V~ 50/60Hz 3p=6h 4p+5p=9h	400V~ 50/60Hz 3p=9h 4p+5p=6h	500V~ 50/60Hz 7h	>50-500V~ 100-300Hz 10h	>50-500V~ 301-500Hz 2h
			Cat.No.	Cat.No.	Cat.No.	Cat.No.	Cat.No.	Cat.No.

flange 65 x 65 - fixing center 52 x 52								
16	3	10	313-4f0	313-6f0	313-9f0	313-7f0	313-10f0	313-2f0
16	4	10	314-4f0	314-9f0	314-6f0	314-7f0	314-10f0	314-2f0
flange 60 x 60 - fixing center 47 x 47								
16	3	10	313-4f6	313-6f6	313-9f6	313-7f6	313-10f6	313-2f6
16	4	10	314-4f6	314-9f6	314-6f6	314-7f6	314-10f6	314-2f6



313-6f0

flange 54 x 60 - fixing center 44 x 44								
16	3	10	313-4f9	313-6f9	313-9f9	313-7f9	313-10f9	313-2f9
flange 55 x 55 - fixing center 44 x 44								
16	3	10	313-4f5	313-6f5	313-9f5	313-7f5	313-10f5	313-2f5



313-6f9

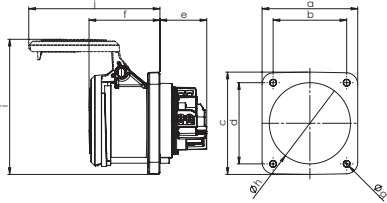
flange 65 x 65 - fixing center 52 x 52								
16	3	10	3132-4f0	3132-6f0	3132-9f0	3132-7f0	3132-10f0	3132-2f0
flange 60 x 60 - fixing center 47 x 47								
16	3	10	3132-4f6	3132-6f6	3132-9f6	3132-7f6	3132-10f6	3132-2f6
flange 54 x 60 - fixing center 44 x 44								
16	3	10	3132-4f9	3132-6f9	3132-9f9	3132-7f9	3132-10f9	3132-2f9
flange 55 x 55 - fixing center 44 x 44								
16	3	10	3132-4f5	3132-6f5	3132-9f5	3132-7f5	3132-10f5	3132-2f5



3132-6f9



Flanged sockets straight

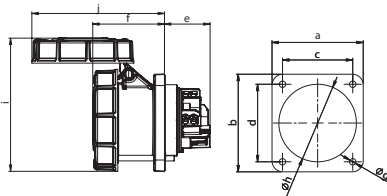


Power Twist Flanged socket straight IP44

	63 Amp			63 Amp		
	3	4	5	3	4	5
Poles	3	4	5	3	4	5
a	100	100	100	100	100	100
b	100	100	100	107	107	107
c	80	80	80	77	77	77
d	80	80	80	85	85	85
e	50	50	50	50	50	50
f	75	75	75	75	75	75
g	7	7	7	7	7	7
h	85	85	85	85	85	85
i	138	138	138	142	142	142
j	138	138	138	138	138	138
Connection type:	Contact frame with screws					
Wire flexible [mm ²]	6-16					
solid [mm ²]	6-25					
Contact screws [Ncm]	200 Ncm					
Weight [g]	440	485	539	446	491	545

- contact frame with screws
- housing material: PA6
- contacts: brass with lamellar contact CuBe
- to order with pilot contact please add a „5“, e.g. 33551-6 (see p. 10)
- to order with pilot contact system (PCS) please add a „6“ e.g. 33561-6 (see page 10)

IP44 splashproof

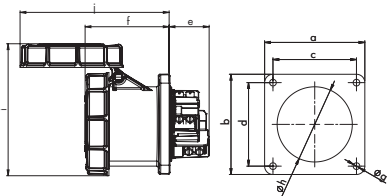


Power Twist Flanged socket straight IP66/67

	63 Amp			63 Amp		
	3	4	5	3	4	5
Poles	3	4	5	3	4	5
a	100	100	100	100	100	100
b	100	100	100	107	107	107
c	80	80	80	77	77	77
d	80	80	80	85	85	85
e	50	50	50	50	50	50
f	80	80	80	80	80	80
g	7	7	7	7	7	7
h	85	85	85	85	85	85
i	147	147	147	147	147	147
j	146	146	146	146	146	146
Connection type:	Contact frame with screws					
Wire flexible [mm ²]	6-16					
solid [mm ²]	6-25					
Contact screws [Ncm]	200 Ncm					
Weight [g]	488	533	587	494	539	593

- contact frame with screws
- housing material: PA6
- contacts: brass with lamellar contact CuBe
- to order with pilot contact please add a „5“, e.g. 33551-6 (see p. 10)
- to order with pilot contact system (PCS) please add a „6“ e.g. 33561-6 (see page 10)

IP66/67 watertight



Power Twist Flanged socket straight IP66/67

	125 Amp		
	3	4	5
Poles	3	4	5
Flange a x b	120	120	120
Fixing Center c x d	100	100	100
e	48	48	48
f	101	101	101
g	8	8	8
h	90	90	90
i	159	159	159
j	179	179	179
Connection type:	Contact frame with screws		
Wire flexible [mm ²]	16-50		
solid [mm ²]	16-70		
Contact screws [Ncm]	450 Ncm		
Weight [g]	752	890	986

- contact frame with hexagon socket screws
- housing material: PA6
- contacts: brass with lamellar contact CuBe
- to order with pilot contact please add a „5“, e.g. 34551-6 (see p. 10)
- to order with pilot contact system (PCS) please add a „6“ e.g. 34561-6 (see page 10)

IP66/67 watertight

Amp.	Poles	pack. unit	110V~	230V~	400V~	500V~	>50-500V~	>50-500V~
			50/60Hz 4h	50/60Hz 3p=6h 4p+5p=9h	50/60Hz 3p=9h 4p+5p=6h	50/60Hz 7h	100-300Hz 10h	301-500Hz 2h
			Cat.No.	Cat.No.	Cat.No.	Cat.No.	Cat.No.	Cat.No.
flange 100 x 100 - fixing center 80 x 80								
63	3	2	3331-4	3331-6	3331-9	3331-7	3331-10	3331-2
63	4	2	3341-4	3341-9	3341-6	3341-7	3341-10	3341-2
63	5	2	3351-4	3351-9	3351-6	3351-7	3351-10	3351-2
flange 100 x 107 - fixing center 77 x 85								
63	3	2	3331-4fc	3331-6fc	3331-9fc	3331-7fc	3331-10fc	3331-2fc
63	4	2	3341-4fc	3341-9fc	3341-6fc	3341-7fc	3341-10fc	3341-2fc
63	5	2	3351-4fc	3351-9fc	3351-6fc	3351-7fc	3351-10fc	3351-2fc



3351-6

flange 100 x 100 - fixing center 80 x 80								
63	3	2	333-4	333-6	333-9	333-7	333-10	333-2
63	4	2	334-4	334-9	334-6	334-7	334-10	334-2
63	5	2	335-4	335-9	335-6	335-7	335-10	335-2
flange 100 x 107 - fixing center 77 x 85								
63	3	2	333-4fc	333-6fc	333-9fc	333-7fc	333-10fc	333-2fc
63	4	2	334-4fc	334-9fc	334-6fc	334-7fc	334-10fc	334-2fc
63	5	2	335-4fc	335-9fc	335-6fc	335-7fc	335-10fc	335-2fc



335-6

flange 120 x 120 - fixing center 100 x 100								
125	3	2	343-4	343-6	343-9	343-7	343-10	343-2
125	4	2	344-4	344-9	344-6	344-7	344-10	344-2
125	5	2	345-4	345-9	345-6	345-7	345-10	345-2



345-6



Accessories flanged sockets

Surface outlet with/for flanged sockets 75x75



80415-6

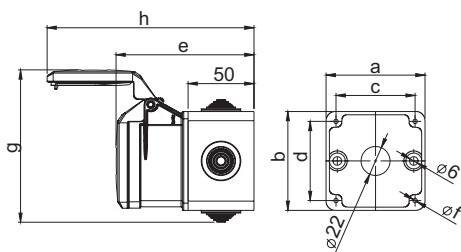
- with screw terminals
- housing material: PA6
- contacts: brass
 - to order nickel-plated contacts please add a "v" e.g. 80015-6v
- suitable for flanged sockets 16A, 32A (75x75)
- available with 2, 4 or without lead-through nipple

IP44 splashproof

Ampere	Poles	pack. unit
with flange 75 x 75		
16	3	10
16	4	10
16	5	10
16	3	10
16	4	10
16	5	10
16	3	10
16	4	10
16	5	10

230V~ 50/60Hz 3p=6h		400V~ 50/60Hz 4p+5p=6h	
Best.Nr.	Best.Nr.	Best.Nr.	Best.Nr.
complete surface outlet		surface outlet empty	
80013-6	80014-6 80015-6	80000	} without lead-through nipple
80213-6	80214-6 80215-6	80200	
80413-6	80414-6 80415-6	80400	} 4 lead-through nipples

32A and special clock positions - available on request!



	16 Amp			32 Amp		
Poles	3	4	5	3	4	5
Flange						
a x b	75	75	75	75	75	75
Fixing center						
c x d	60	60	60	60	60	60
e	105	105	105	115	115	115
f	3,3	3,3	3,3	3,3	3,3	3,3
g	110	113	116	118	118	122
h	144	152	157	172	172	77
Connection type:	Screw terminal					
Wire flexible [mm ²]	1-2,5			2,5-6		
solid [mm ²]	1-4			2,5-10		
Contact screws [Ncm]	100 Ncm			110 Ncm		
Weight [g]	190	205	220	260	270	295



Finger protection for flanged sockets 16A/32A

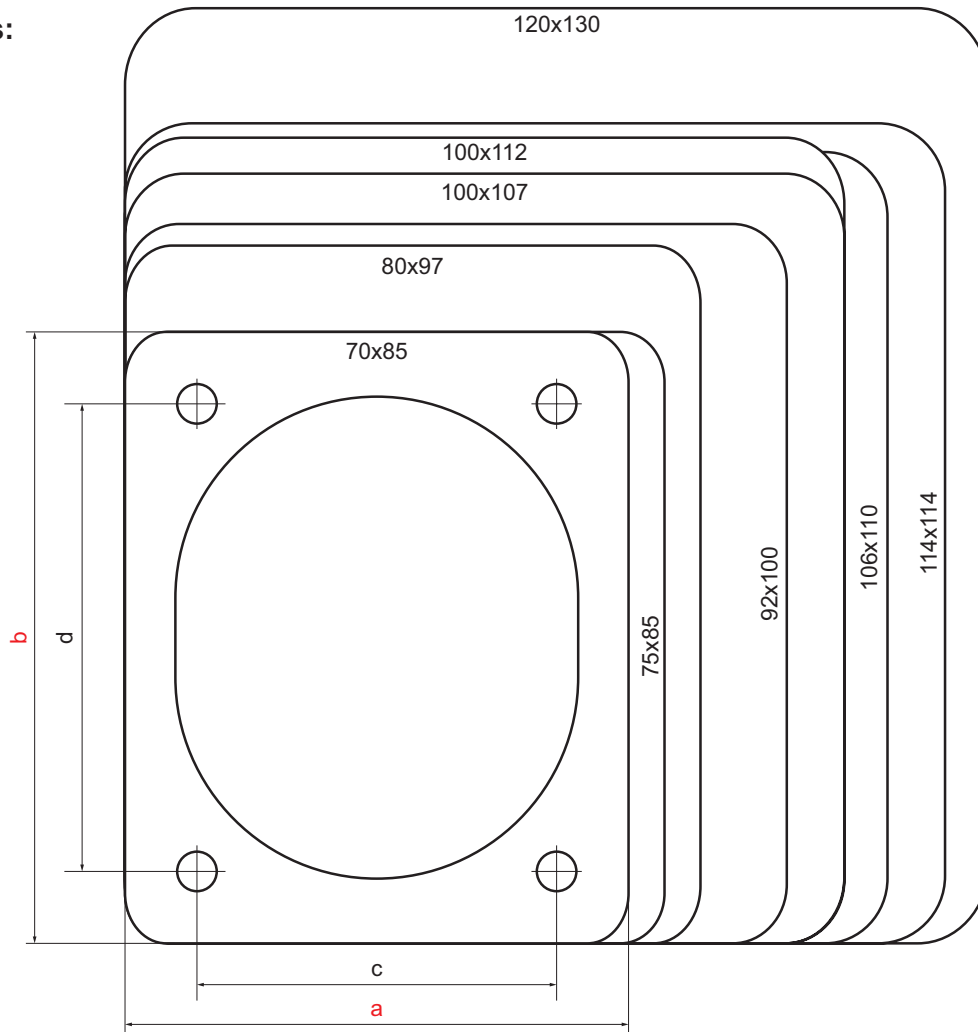
Depending of country specific standards and regulations it can be necessary to equip terminals with a finger protection. This finger protection can be mounted on all PCE 16A and 32A CEE flanged sockets with screw contact (2P+E, 3P+E, 3P+E+N) in case of need.



16A	4-times	pack.unit=150/1300 pcs.	ts167s
32A	4-times	pack.unit=150/1000 pcs.	ts327s


Flanged sockets sloping

Dimensions:



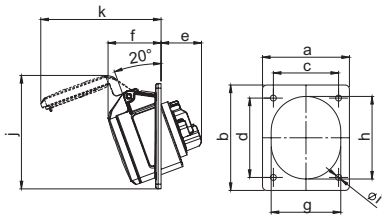
Versions:

flange		fixing-center		page #	16A			32A			63A			125A		
a	b	c	d		3p	4p	5p	3p	4p	5p	3p	4p	5p	3p	4p	5p
70	85	50	65	84-85	IP44* IP67*	IP44* IP67*										
75	85	60	60	86-87	IP44* IP67*	IP44* IP67*	IP44* IP67*									
80	97	60	73	82-83	IP44* IP67*	IP44* IP67*	IP44* IP67*	IP44* IP67*	IP44* IP67*	IP44* IP67*						
92	100	77	85	86-87 88-89	IP44* IP67*	IP44* IP67*	IP44* IP67*	IP44* IP67*	IP44* IP67*	IP44* IP67*						
100	107	77	85	90-91							IP44 IP67	IP44 IP67	IP44 IP67			
100	112	80	88	90-91							IP44 IP67	IP44 IP67	IP44 IP67			
106	110	90	90	90-91							IP44 IP67	IP44 IP67	IP44 IP67			
114	114	90	90	90-91										IP67	IP67	IP67
120	130	100	108	90-91										IP67	IP67	IP67

* also available in screwless connection technology (TT) 



Flanged sockets sloping

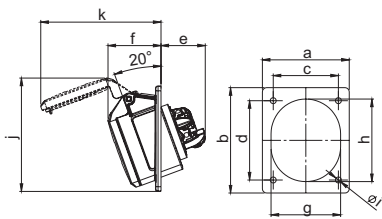


Flanged socket sloping IP44

Poles	16 Amp			32 Amp		
	3	4	5	3	4	5
a	80	80	80	80	80	80
b	97	97	97	97	97	97
c	60	60	60	60	60	60
d	73	73	73	73	73	73
e	38	38	38	48	48	48
f	47	47	49	54	54	55
g	51	56	65	65	65	70
h	61	67	76	75	75	80
i	5,5	5,5	5,5	5,5	5,5	5,5
j	97	103	105	105	105	99
k	99	104	111	119	119	130
Connection type: Screw terminal						
Wire flexible [mm ²]						
solid [mm ²]						
Contact screws [Ncm]						
Weight [g]						

- with screw terminals
- housing material: PA6
- contacts: brass
 - to order nickel-plated contacts please add a "v" e.g. 415-6v

IP44 splashproof
IP44/54 16/3; 16/5 and 32/5 are splash- and dustproof

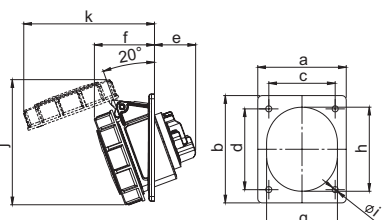


Turbo Twist Flanged socket sloping IP44

Poles	16 Amp			32 Amp		
	3	4	5	3	4	5
a	80	80	80	80	80	80
b	97	97	97	97	97	97
c	60	60	60	60	60	60
d	73	73	73	73	73	73
e	41	41	41	48	48	48
f	47	47	49	54	54	55
g	51	56	65	65	65	70
h	61	67	76	75	75	80
i	5,5	5,5	5,5	5,5	5,5	5,5
j	97	103	105	105	105	99
k	99	104	111	119	119	130
Connection type: Screwless terminal						
Wire flexible [mm ²]						
solid [mm ²]						
Weight [g]						

- screwless connection technology
- housing material: PA6
- contacts: brass
 - to order nickel-plated contacts please add a "v" e.g. 415-6TTv

IP44 splashproof
IP44/54 16/3; 16/5 and 32/5 are splash- and dustproof

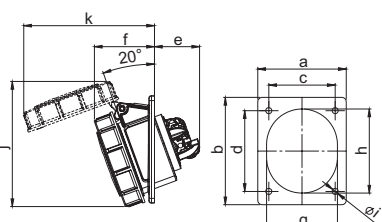


Flanged socket sloping IP67

Poles	16 Amp			32 Amp		
	3	4	5	3	4	5
a	80	80	80	80	80	80
b	97	97	97	97	97	97
c	60	60	60	60	60	60
d	73	73	73	73	73	73
e	38	38	38	48	48	48
f	50	52	55	59	59	61
g	51	56	65	65	65	70
h	61	67	76	75	75	80
i	5,5	5,5	5,5	5,5	5,5	5,5
j	102	106	114	120	120	127
k	103	110	119	127	127	133
Connection type: Screw terminal						
Wire flexible [mm ²]						
solid [mm ²]						
Contact screws [Ncm]						
Weight [g]						

- with screw terminals
- housing material: PA6
- contacts: brass
 - to order nickel-plated contacts please add a "v" e.g. 4152-6f78v

IP67 watertight



Turbo Twist Flanged socket sloping IP67

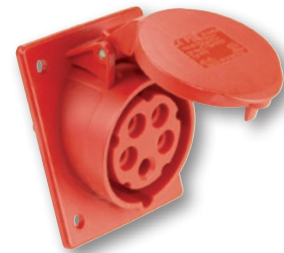
Poles	16 Amp			32 Amp		
	3	4	5	3	4	5
a	80	80	80	80	80	80
b	97	97	97	97	97	97
c	60	60	60	60	60	60
d	73	73	73	73	73	73
e	41	41	41	48	48	48
f	50	52	55	59	59	61
g	51	56	65	65	65	70
h	61	67	76	75	75	80
i	5,5	5,5	5,5	5,5	5,5	5,5
j	102	106	114	120	120	127
k	103	110	119	127	127	133
Connection type: Screwless terminal						
Wire flexible [mm ²]						
solid [mm ²]						
Weight [g]						

- screwless connection technology
- housing material: PA6
- contacts: brass
 - to order nickel-plated contacts please add a "v" e.g. 4152-6TTf78v

IP67 watertight

Amp.	Poles	pack. unit	110V~ 50/60Hz 4h	230V~ 50/60Hz 3p=6h 4p+5p=9h	400V~ 50/60Hz 3p=9h 4p+5p=6h	500V~ 50/60Hz 7h	>50- 500V~ 100-300Hz 10h	>50- 500V~ 301-500Hz 2h
			Cat.No.	Cat.No.	Cat.No.	Cat.No.	Cat.No.	Cat.No.

flange 80 x 97 - fixing center 60 x 73								
16	3	10	413-4f8	413-6f8	413-9f8	413-7f8	413-10f8	413-2f8
16	4	10	414-4f8	414-9f8	414-6f8	414-7f8	414-10f8	414-2f8
16	5	10	415-4	415-9	415-6	415-7	415-10	415-2
32	3	10	423-4	423-6	423-9	423-7	423-10	423-2
32	4	10	424-4	424-9	424-6	424-7	424-10	424-2
32	5	10	425-4	425-9	425-6	425-7	425-10	425-2



415-6

flange 80 x 97 - fixing center 60 x 73					
16	3	10	413-4TTf8	413-6TTf8	413-9TTf8
16	4	10	414-4TTf8	414-9TTf8	414-6TTf8
16	5	10	415-4TT	415-9TT	415-6TT
32	3	10	423-4TT	423-6TT	423-9TT
32	4	10	424-4TT	424-9TT	424-6TT
32	5	10	425-4TT	425-9TT	425-6TT



415-6TT

flange 80 x 97 - fixing center 60 x 73								
16	3	10	4132-4f8	4132-6f8	4132-9f8	4132-7f8	4132-10f8	4132-2f8
16	4	10	4142-4f8	4142-9f8	4142-6f8	4142-7f8	4142-10f8	4142-2f8
16	5	10	4152-4f78	4152-9f78	4152-6f78	4152-7f78	4152-10f78	4152-2f78
32	3	10	4232-4f78	4232-6f78	4232-9f78	4232-7f78	4232-10f78	4232-2f78
32	4	10	4242-4f78	4242-9f78	4242-6f78	4242-7f78	4242-10f78	4242-2f78
32	5	10	4252-4f78	4252-9f78	4252-6f78	4252-7f78	4252-10f78	4252-2f78



4152-6f78

flange 80 x 97 - fixing center 60 x 73					
16	3	10	4132-4TTf8	4132-6TTf8	4132-9TTf8
16	4	10	4142-4TTf8	4142-9TTf8	4142-6TTf8
16	5	10	4152-4TTf78	4152-9TTf78	4152-6TTf78
32	3	10	4232-4TTf78	4232-6TTf78	4232-9TTf78
32	4	10	4242-4TTf78	4242-9TTf78	4242-6TTf78
32	5	10	4252-4TTf78	4252-9TTf78	4252-6TTf78

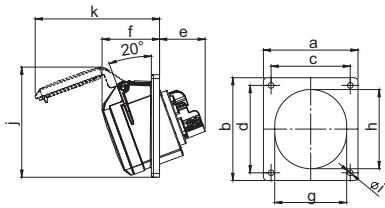


4152-6TTf78



Flanged sockets sloping

Flanged socket sloping IP44

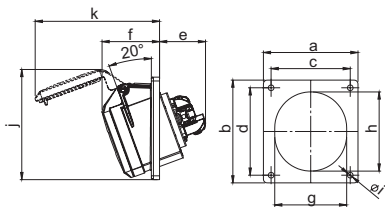


		16 Amp	
Poles	3	4	
a	70	70	
b	85	85	
c	50	50	
d	65	65	
e	38	38	
f	47	47	
g	51	56	
h	61	67	
i	5,5	5,5	
j	85	96	
k	99	104	
Connection type:	Screw terminal		
Wire flexible [mm ²]	1-2,5		
solid [mm ²]	1-4		
Contact screws [Ncm]	100 Ncm		
Weight [g]	111	127	

- with screw terminals
- housing material: PA6
- contacts: brass
 - to order nickel-plated contacts please add a "v" e.g. 413-6v

IP44 splashproof
IP44/54 16/3 is splash- and dustproof

Turbo Twist Flanged socket sloping IP44

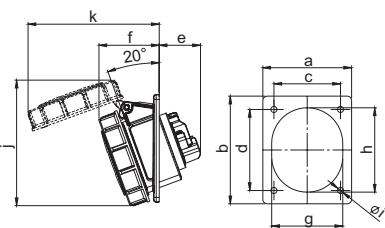


		16 Amp	
Poles	3	4	
a	70	70	
b	85	85	
c	50	50	
d	65	65	
e	41	41	
f	47	47	
g	51	56	
h	61	67	
i	5,5	5,5	
j	85	96	
k	99	104	
Connection type:	Screwless terminal		
Wire flexible [mm ²]	1-2,5		
solid [mm ²]	1-4		
Weight [g]	114	128	

- screwless connection technology
- housing material: PA6
- contacts: brass
 - to order nickel-plated contacts please add a "v" e.g. 413-6TTv

IP44 splashproof
IP44/54 16/3 is splash- and dustproof

Flanged socket sloping IP67

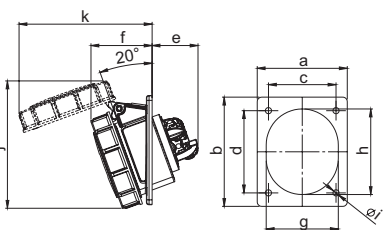


		16 Amp	
Poles	3	4	
a	70	70	
b	85	85	
c	50	50	
d	65	65	
e	38	38	
f	50	52	
g	51	56	
h	61	67	
i	5,5	5,5	
j	97	104	
k	102	111	
Connection type:	Screw terminal		
Wire flexible [mm ²]	1-2,5		
solid [mm ²]	1-4		
Contact screws [Ncm]	100 Ncm		
Weight [g]	128	132	

- with screw terminals
- housing material: PA6
- contacts: brass
 - to order nickel-plated contacts please add a "v" e.g. 4132-6f78v

IP67 watertight

Turbo Twist Flanged socket sloping IP67



		16 Amp	
Pole	3	4	
a	70	70	
b	85	85	
c	50	50	
d	65	65	
e	41	41	
f	50	52	
g	51	56	
h	61	67	
i	5,5	5,5	
j	97	104	
k	102	111	
Connection type:	Screwless terminal		
Wire flexible [mm ²]	1-2,5		
solid [mm ²]	1-4		
Weight [g]	130	133	

- with screw terminals
- three-piece version
- housing material: PA6
- contacts: brass
 - to order nickel-plated contacts please add a "v" e.g. 4132-6TTf78v

IP67 watertight

Amp.	Poles	pack. unit	110V~ 50/60Hz 4h	230V~ 50/60Hz 3p=6h 4p+5p=9h	400V~ 50/60Hz 3p=9h 4p+5p=6h	500V~ 50/60Hz 7h	>50- 500V~ 100-300Hz 10h	>50- 500V~ 301-500Hz 2h
			Cat.No.	Cat.No.	Cat.No.	Cat.No.	Cat.No.	Cat.No.

Amp.	Poles	pack. unit	110V~	230V~	400V~	500V~	>50-500V~	>50-500V~
flange 70 x 85 - fixing center 50 x 65								
16	3	10	413-4	413-6	413-9	413-7	413-10	413-2
16	4	10	414-4	414-9	414-6	414-7	414-10	414-2



413-6

Amp.	Poles	pack. unit	110V~	230V~	400V~
flange 70 x 85 - fixing center 50 x 65					
16	3	10	413-4TT	413-6TT	413-9TT
16	4	10	414-4TT	414-9TT	414-6TT



414-6TT

Amp.	Poles	pack. unit	110V~	230V~	400V~	500V~	>50-500V~	>50-500V~
flange 70 x 85 - fixing center 50 x 65								
16	3	10	4132-4f78	4132-6f78	4132-9f78	4132-7f78	4132-10f78	4132-2f78
16	4	10	4142-4f78	4142-9f78	4142-6f78	4142-7f78	4142-10f78	4142-2f78



4132-6f78

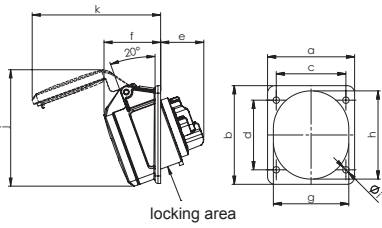
Amp.	Poles	pack. unit	110V~	230V~	400V~
flange 70 x 85 - fixing center 50 x 65					
16	3	10	4132-4TTf78	4132-6TTf78	4132-9TTf78
16	4	10	4142-4TTf78	4142-9TTf78	4142-6TTf78



4132-6TTf78



Flanged sockets sloping

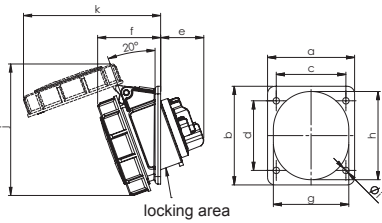


Flanged socket sloping IP44

Poles	16 Amp		
	3	4	5
a	75	75	75
b	85	85	85
c	60	60	60
d	60	60	60
e	38	38	39
f	47	47	48
g	51	56	65
h	61	67	76
i	5,5	5,5	5,5
j	85	96	101
k	99	104	111
Connection type: Screw terminal			
Wire flexible [mm ²]: 1-2,5			
solid [mm ²]: 1-4			
Contact screws [Ncm]: 100 Ncm			
Weight [g]	111	127	153

- with screw terminals
- housing material: PA6
- contacts: brass
 - to order nickel-plated contacts please add a "v" e.g. 415-6f87v
- with locking area

IP44 splashproof
IP44/54 16/3 and 16/5 are splash- and dustproof

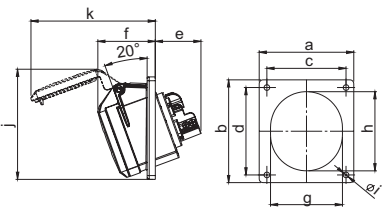


Flanged socket sloping IP67

Poles	16 Amp		
	3	4	5
a	75	75	75
b	85	85	85
c	60	60	60
d	60	60	60
e	38	38	39
f	49	50	54
g	51	56	65
h	61	67	76
i	5,5	5,5	5,5
j	97	104	114
k	102	111	119
Connection type: Screw terminal			
Wire flexible [mm ²]: 1-2,5			
solid [mm ²]: 1-4			
Contact screws [Ncm]: 100 Ncm			
Weight [g]	127	148	181

- with screw terminals
- housing material: PA6
- contacts: brass
 - to order nickel-plated contacts please add a "v" e.g. 4152-6f87v
- with locking area

IP67 watertight

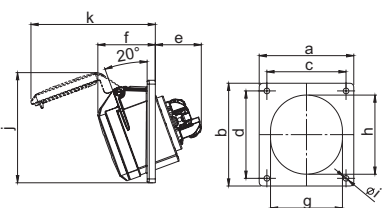


Flanged socket sloping IP44

Poles	16 Amp		32 Amp	
	3	4	3	5
a	92	92	92	92
b	100	100	100	100
c	77	77	77	77
d	85	85	85	85
e	38	48	48	48
f	49	54	54	55
g	65	65	65	70
h	76	75	75	80
i	5,5	5,5	5,5	5,5
j	107	107	107	101
k	111	121	121	132
Connection type: Screw terminal				
Wire flexible [mm ²]: 1-2,5				
solid [mm ²]: 1-4				
Contact screws [Ncm]: 100 Ncm				
Weight [g]	166	180	198	229

- with screw terminals
- housing material: PA6
- contacts: brass
 - to order nickel-plated contacts please add a "v" e.g. 415-6f9v

IP44 splashproof
IP44/54 16/5 and 32/5 are splash- and dustproof



Turbo Twist Flanged socket sloping IP44

Poles	16 Amp		32 Amp	
	3	4	3	5
a	92	92	92	92
b	100	100	100	100
c	77	77	77	77
d	85	85	85	85
e	41	48	48	48
f	49	54	54	55
g	65	65	65	70
h	76	75	75	80
i	5,5	5,5	5,5	5,5
j	107	107	107	101
k	111	121	121	132
Connection type: Screwless terminal				
Wire flexible [mm ²]: 1-2,5				
solid [mm ²]: 1-4				
Weight [g]	170	180	197	230

- screwless connection technology
- housing material: PA6
- contacts: brass
 - to order nickel-plated contacts please add a "v" e.g. 415-6TTf9v

IP44 splashproof
IP44/54 16/5 and 32/5 are splash- and dustproof

Amp.	Poles	pack. unit	110V~ 50/60Hz 4h	230V~ 50/60Hz 3p=6h 4p+5p=9h	400V~ 50/60Hz 3p=9h 4p+5p=6h	500V~ 50/60Hz 7h	>50- 500V~ 100-300Hz 10h	>50- 500V~ 301-500Hz 2h
			Cat.No.	Cat.No.	Cat.No.	Cat.No.	Cat.No.	Cat.No.

Amp.	Poles	pack. unit	110V~	230V~	400V~	500V~	>50-500V~	>50-500V~
flange 75 x 85 - fixing center 60 x 60								
16	3	10	413-4f87	413-6f87	413-9f87	413-7f87	413-10f87	413-2f87
16	4	10	414-4f87	414-9f87	414-6f87	414-7f87	414-10f87	414-2f87
16	5	10	415-4f87	415-9f87	415-6f87	415-7f87	415-10f87	415-2f87



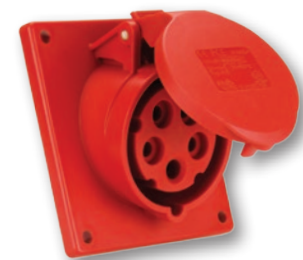
415-6f87

Amp.	Poles	pack. unit	110V~	230V~	400V~	500V~	>50-500V~	>50-500V~
flange 75 x 85 - fixing center 60 x 60								
16	3	10	4132-4f87	4132-6f87	4132-9f87	4132-7f87	4132-10f87	4132-2f87
16	4	10	4142-4f87	4142-9f87	4142-6f87	4142-7f87	4142-10f87	4142-2f87
16	5	10	4152-4f87	4152-9f87	4152-6f87	4152-7f87	4152-10f87	4152-2f87



4152-6f87

Amp.	Poles	pack. unit	110V~	230V~	400V~	500V~	>50-500V~	>50-500V~
flange 92 x 100 - fixing center 77 x 85								
16	5	10	415-4f9	415-9f9	415-6f9	415-7f9	415-10f9	415-2f9
32	3	10	423-4f9	423-6f9	423-9f9	423-7f9	423-10f9	423-2f9
32	4	10	424-4f9	424-9f9	424-6f9	424-7f9	424-10f9	424-2f9
32	5	10	425-4f9	425-9f9	425-6f9	425-7f9	425-10f9	425-2f9



415-6f9

Amp.	Poles	pack. unit	110V~	230V~	400V~
flange 92 x 100 - fixing center 77 x 85					
16	5	10	415-4TTf9	415-9TTf9	415-6TTf9
32	3	10	423-4TTf9	423-6TTf9	423-9TTf9
32	4	10	424-4TTf9	424-9TTf9	424-6TTf9
32	5	10	425-4TTf9	425-9TTf9	425-6TTf9

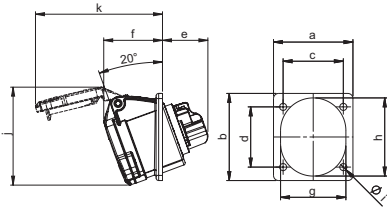
TURBO
TWIS
click



425-9TTf9



Flanged sockets sloping

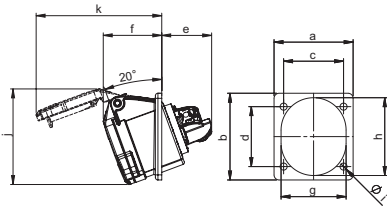


Flanged socket sloping, lockable IP44

16 Amp	
Poles	3
a	62
b	68
c	47
d	47
e	38
f	46
g	51
h	61
i	5,5
j	77
k	99
Connection type:	Screw terminal
Wire flexible [mm ²]	1-2,5
solid [mm ²]	1-4
Contact screws [Ncm]	100 Ncm
Weight [g]	111

- with screw terminals
- housing material: PA6
- contacts: brass
 - to order nickel-plated contacts please add a „v“ e.g. 413-6f66v
- lockable with padlock

IP44/54 splash- and dustproof

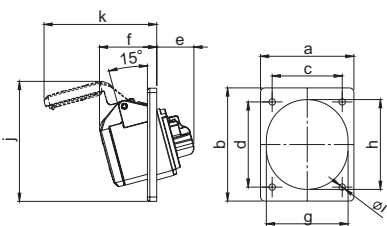


Turbo Twist Flanged socket sloping, lockable IP44

16 Amp	
Poles	3
a	62
b	68
c	47
d	47
e	41
f	46
g	51
h	61
i	5,5
j	77
k	99
Connection type:	Screwless terminal
Wire flexible [mm ²]	1-2,5
solid [mm ²]	1-4
Weight [g]	113

- screwless connection technology
- housing material: PA6
- contacts: brass
 - to order nickel-plated contacts please add a „v“ e.g. 413-6TTf66v
- lockable with padlock

IP44/54 splash- and dustproof

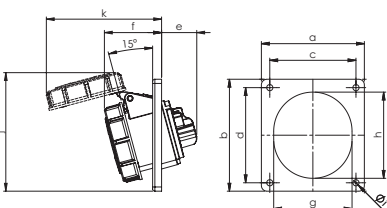


Twist Flanged socket sloping IP44

16 Amp		
Poles	3	4
a	92	92
b	100	100
c	77	77
d	85	85
e	32	33
f	50	50
g	70	70
h	77	77
i	5,5	5,5
j	105	108
k	97	104
Connection type:	Screw terminal	
Wire flexible [mm ²]	1-2,5	
solid [mm ²]	1-4	
Contact screws [Ncm]	100 Ncm	
Weight [g]	136	167

- with screw terminals
- three-piece version
- housing material: PA6
- contacts: brass
 - to order nickel-plated contacts please add a "v" e.g. 414-6f9v

IP44 splashproof



Twist Flanged socket sloping IP67

Poles	16 Amp			32 Amp		
	3	4	5	3	4	5
a	92	92	92	92	92	92
b	100	100	100	100	100	100
c	77	77	77	77	77	77
d	85	85	85	85	85	85
e	32	33	35	40	40	40
f	52	53	54	64	64	65
g	70	70	70	77	77	77
h	77	77	77	88	88	88
i	5,5	5,5	5,5	5,5	5,5	5,5
j	106	109	115	121	121	128
k	103	111	117	132	132	136
Connection type:	Screw terminal					
Wire flexible [mm ²]	1-2,5			2,5-6		
solid [mm ²]	1-4			2,5-10		
Contact screws [Ncm]	100 Ncm			110 Ncm		
Weight [g]	179	190	222	253	270	308

- with screw terminals
- three-piece version
- housing material: PA6
- contacts: brass
 - to order nickel-plated contacts please add a "v" e.g. 4152-6v

IP67 watertight

110V~

50/60Hz
4h

230V~

50/60Hz
3p=6h
4p+5p=9h

400V~

50/60Hz
3p=9h
4p+5p=6h

500V~

50/60Hz
7h

>50-500V~

100-300Hz
10h

>50-500V~

301-500Hz
2h

Amp.
Poles
pack.
unit

Cat.No.

Cat.No.

Cat.No.

Cat.No.

Cat.No.

Cat.No.

flange 62 x 68 - fixing center 47 x 47

16	3	10	413-4f66	413-6f66	413-9f66	413-7f66	413-10f66	413-2f66
----	---	----	----------	-----------------	----------	----------	-----------	----------



413-6f66

flange 62 x 68 - fixing center 47 x 47

16	3	10	413-4TTf66	413-6TTf66	413-9TTf66	413-7TTf66	413-10TTf66	413-2TTf66
----	---	----	------------	-------------------	------------	------------	-------------	------------



413-6TTf66

flange 92 x 100 - fixing center 77 x 85

16	3	10	413-4f9	413-6f9	413-9f9	413-7f9	413-10f9	413-2f9
16	4	10	414-4f9	414-9f9	414-6f9	414-7f9	414-10f9	414-2f9



413-6f9

flange 92 x 100 - fixing center 77 x 85

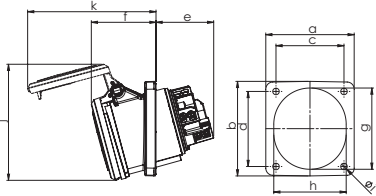
16	3	10	4132-4	4132-6	4132-9	4132-7	4132-10	4132-2
16	4	10	4142-4	4142-9	4142-6	4142-7	4142-10	4142-2
16	5	10	4152-4	4152-9	4152-6	4152-7	4152-10	4152-2
32	3	10	4232-4	4232-6	4232-9	4232-7	4232-10	4232-2
32	4	10	4242-4	4242-9	4242-6	4242-7	4242-10	4242-2
32	5	10	4252-4	4252-9	4252-6	4252-7	4252-10	4252-2



4152-6



Flanged sockets sloping

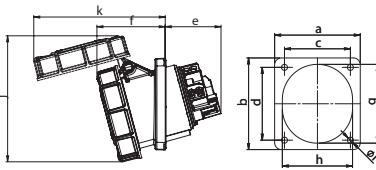


Power Twist Flanged socket sloping IP44

Poles	63 Amp			63 Amp			63 Amp		
	3	4	5	3	4	5	3	4	5
a	100	100	100	100	100	100	106	106	106
b	112	112	112	107	107	107	110	110	110
c	80	80	80	77	77	77	90	90	90
d	88	88	88	85	85	85	90	90	90
e	64	64	64	64	64	64	64	64	64
f	74	74	74	74	74	74	74	74	74
g	92	92	92	92	92	92	92	92	92
h	82	82	82	82	82	82	82	82	82
i	7	7	7	7	7	7	7	7	7
j	132	132	132	132	132	132	132	132	132
k	146	146	146	146	146	146	146	146	146
Connection type:	Contact frame with screws								
Wire flexible [mm ²]	6-16								
solid [mm ²]	6-25								
Contact screws [Ncm]	200 Ncm								
Weight [g]	447	492	547	443	488	543	450	395	550

- contact frame with screws
- housing material: PA6
- contacts: brass with lamellar contact CuBe
- to order with pilot contact please add a „5“ e.g. 43351-6 (see page 10)
- to order with pilot contact system (PCS) please add a „6“ e.g. 43361-6 (see page 10)

IP44 splashproof

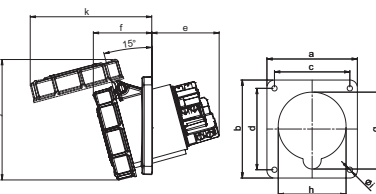


Power Twist Flanged socket sloping IP67

Poles	63 Amp			63 Amp			63 Amp		
	3	4	5	3	4	5	3	4	5
a	100	100	100	100	100	100	106	106	106
b	112	112	112	107	107	107	110	110	110
c	80	80	80	77	77	77	90	90	90
d	88	88	88	85	85	85	90	90	90
e	64	64	64	64	64	64	64	64	64
f	80	80	80	80	80	80	80	80	80
g	92	92	92	92	92	92	92	92	92
h	82	82	82	82	82	82	82	82	82
i	7	7	7	7	7	7	7	7	7
j	148	148	148	148	148	148	148	148	148
k	154	154	154	154	154	154	154	154	154
Connection type:	Contact frame with screws								
Wire flexible [mm ²]	6-16								
solid [mm ²]	6-25								
Contact screws [Ncm]	200 Ncm								
Weight [g]	495	540	595	491	536	591	498	443	598

- contact frame with screws
- housing material: PA6
- contacts: brass with lamellar contact CuBe
- to order with pilot contact please add a „5“ e.g. 4355-6 (see page 9)
- to order with pilot contact system (PCS) please add a „6“ e.g. 4356-6 (see page 10)

IP66/67 watertight



Power Twist Flanged socket sloping IP67

Poles	125 Amp			125 Amp		
	3	4	5	3	4	5
a	120	120	120	114	114	114
b	130	130	130	114	114	114
c	100	100	100	90	90	90
d	108	108	108	90	90	90
e	92	92	92	92	92	92
f	77	77	77	77	77	77
g	102	102	102	102	102	102
h	90	90	90	90	90	90
i	7	7	7	7	7	7
j	160	160	160	160	160	160
k	162	162	162	162	162	162
Connection type:	Contact frame with screws					
Wire flexible [mm ²]	16-50					
solid [mm ²]	16-70					
Contact screws [Ncm]	450 Ncm					
Weight [g]	804	896	995	792	880	987

- contact frame with hexagon socket screws
- housing material: PA6
- contacts: brass with lamellar contact CuBe
- to order with pilot contact please add a „5“ e.g. 4455-6 (see page 10)
- to order with pilot contact system (PCS) please add a „6“ e.g. 4456-6 (see page 10)

IP66/67 watertight

Amp.	Poles	pack-unit	110V~	230V~	400V~	500V~	>50-500V~	>50-500V~
			50/60Hz 4h	50/60Hz 3p=6h 4p+5p=9h	50/60Hz 3p=9h 4p+5p=6h	50/60Hz 7h	100-300Hz 10h	301-500Hz 2h
			Cat.No.	Cat.No.	Cat.No.	Cat.No.	Cat.No.	Cat.No.
flange 100 x 112 - fixing center 80 x 88								
63	3	2	4331-4	4331-6	4331-9	4331-7	4331-10	4331-2
63	4	2	4341-4	4341-9	4341-6	4341-7	4341-10	4341-2
63	5	2	4351-4	4351-9	4351-6	4351-7	4351-10	4351-2
flange 100 x 107 - fixing center 77 x 85								
63	3	2	4331-4fc	4331-6fc	4331-9fc	4331-7fc	4331-10fc	4331-2fc
63	4	2	4341-4fc	4341-9fc	4341-6fc	4341-7fc	4341-10fc	4341-2fc
63	5	2	4351-4fc	4351-9fc	4351-6fc	4351-7fc	4351-10fc	4351-2fc
flange 106 x 110 - fixing center 90 x 90								
63	3	2	4331-4fd	4331-6fd	4331-9fd	4331-7fd	4331-10fd	4331-2fd
63	4	2	4341-4fd	4341-9fd	4341-6fd	4341-7fd	4341-10fd	4341-2fd
63	5	2	4351-4fd	4351-9fd	4351-6fd	4351-7fd	4351-10fd	4351-2fd



4351-6

flange 100 x 112 - fixing center 80 x 88								
63	3	2	433-4	433-6	433-9	433-7	433-10	433-2
63	4	2	434-4	434-9	434-6	434-7	434-10	434-2
63	5	2	435-4	435-9	435-6	435-7	435-10	435-2
flange 100 x 107 - fixing center 77 x 85								
63	3	2	433-4fc	433-6fc	433-9fc	433-7fc	433-10fc	433-2fc
63	4	2	434-4fc	434-9fc	434-6fc	434-7fc	434-10fc	434-2fc
63	5	2	435-4fc	435-9fc	435-6fc	435-7fc	435-10fc	435-2fc
flange 106 x 110 - fixing center 90 x 90								
63	3	2	433-4fd	433-6fd	433-9fd	433-7fd	433-10fd	433-2fd
63	4	2	434-4fd	434-9fd	434-6fd	434-7fd	434-10fd	434-2fd
63	5	2	435-4fd	435-9fd	435-6fd	435-7fd	435-10fd	435-2fd



435-6

flange 120 x 130 - fixing center 100 x 108								
125	3	2	443-4	443-6	443-9	443-7	443-10	443-2
125	4	2	444-4	444-9	444-6	444-7	444-10	444-2
125	5	2	445-4	445-9	445-6	445-7	445-10	445-2
flange 114 x 114 - fixing center 90 x 90								
125	3	2	443-4fe	443-6fe	443-9fe	443-7fe	443-10fe	443-2fe
125	4	2	444-4fe	444-9fe	444-6fe	444-7fe	444-10fe	444-2fe
125	5	2	445-4fe	445-9fe	445-6fe	445-7fe	445-10fe	445-2fe



445-6





DESIGN-SOCKETS

Design-Sockets

Flanged socket

Page **94**



Surface outlet

Page **94**



Flush outlet

Page **94**

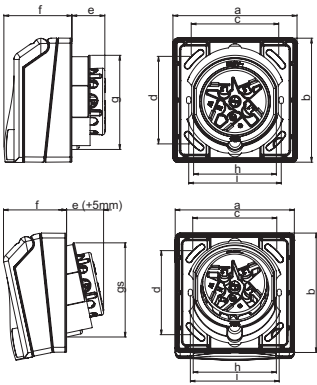


Accessories

Page **96**



Design Socket

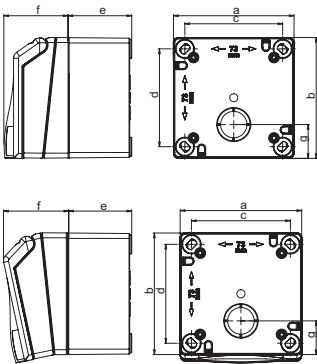


Flanged socket

	16 Amp			32 Amp	SSD
Poles	3	4	5	5	2P+E
Flange					
a x b	90	90	90	90	90
Fixing center					
c x d	60	60	60	60	60
e	23	24	24	36	16
f	48	48	48	48	48
g	66	66	69	78	66
gs	69	69	72	78	69
h	63	63	63	74	63
i	67	67	67		67
Connection type:	Screw terminal				
Wire flexible [mm ²]	1-2,5			2,5-6	1 - 2x2,5
solid [mm ²]	1-4			2,5-10	1 - 2x2,5
Contact screws [Ncm]	100 Ncm			110 Ncm	80 Ncm
Weight [g]	196	215	231	290	159

- with screw terminals for wiring through
- housing material: PC/ABS
- contacts: nickel-plated contacts
- Flange can be rotated by 180° - straight and sloping design all in one!
- suitable for installation of cable conduits
- 16A sockets: installation also possible in customary cavity wall and concrete sockets with fixing center 67mm
- with inscription field

IP44 splashproof

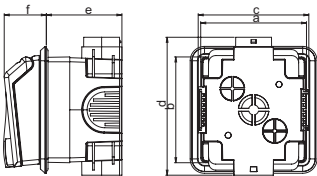


Surface outlet

	16 Amp			32 Amp	SSD
Poles	3	4	5	5	2P+E
Flange					
a x b	90	90	90	90	90
Fixing center					
c x d	73	73	73	73	73
e	47	47	47	47	47
f	48	48	48	48	48
g	25	25	25	25	25
Connection type:	Screw terminal				
Wire flexible [mm ²]	1-2,5			2,5-6	1 - 2x2,5
solid [mm ²]	1-4			2,5-10	1 - 2x2,5
Contact screws [Ncm]	100 Ncm			110 Ncm	80 Ncm
Weight [g]	282	302	318	376	245

- with screw terminals for wiring trough
- housing material: PC/ABS
- contacts: nickel-plated contacts
- Flange can be rotated by 180° - straight and sloping design all in one!
- one side entry with offset nipple, possible entry on the other with cutout
- with inscription field

IP44 splashproof



Flush outlet

	16 Amp			32 Amp	SSD
Poles	3	4	5	5	2P+E
Flange					
a x b	90	90	90	90	90
Fixing center					
c	92	92	92	92	92
d	115	115	115	115	115
e	64	64	64	64	64
f	35	35	35	35	35
Connection type:	Screw terminal				
Wire flexible [mm ²]	1-2,5			2,5-6	1 - 2x2,5
solid [mm ²]	1-4			2,5-10	1 - 2x2,5
Contact screws [Ncm]	100 Ncm			110 Ncm	80 Ncm
Weight [g]	278	298	313	373	240

- with screw terminals for wiring through
- housing material: PC/ABS
- contacts: nickel-plated contacts
- entry from top, bottom, side or rear by cutout
- in rows combinable with horizontal and vertical insertion
- with inscription field
- with integrated cover frame and a fix inclination of 6° - small projection (35mm)

IP44 splashproof



Safe against ball throwing

All Design Sockets are safe against ball throwing according DIN 18032 for the special application in sports halls.

Flange can be rotated by 180° – straight and sloping design all in one!



110V~

50/60Hz
4h

230V~

50/60Hz
3p=6h
4p+5p=9h

400V~

50/60Hz
3p=9h
4p+5p=6h

250V~

50/60Hz
2P+E

Amp.
Poles
pack.
unit

Cat.No.

Cat.No.

Cat.No.

Cat.No.

(CEE-socket)

(CEE-socket)

(CEE-socket)

(with safety socket acc.
Austrian/German system)

16	3	6
16	4	6
16	5	6
32	5	6
16	2P+E	6

843-4v	843-6v	843-9v
844-4v	844-9v	844-6v
845-4v	845-9v	845-6v
855-4v	855-9v	855-6v

8430v



845-6v

8430v

16	3	6
16	4	6
16	5	6
32	5	6
16	2P+E	6

863-4v	863-6v	863-9v
864-4v	864-9v	864-6v
865-4v	865-9v	865-6v
875-4v	875-9v	875-6v

8630v



865-6v

8630v

16	3	6
16	4	6
16	5	6
32	5	6
16	2P+E	6

883-4v	883-6v	883-9v
884-4v	884-9v	884-6v
885-4v	885-9v	885-6v
895-4v	895-9v	895-6v

8830v



885-6v

8830v



**Inscription field as standard
incl. paper insert**

Flush socket outlet projection



All Design Sockets are available in the following colours: white (= standard) and light grey:

To order white, just choose the above mentioned numbers	e.g.	845-6v	RAL 9016
To order light grey add „g“	e.g.	845-6gv	RAL 7035



Design Socket Accessories



Cover frame 1-way with gasket

- Dimensions: 105 x 105

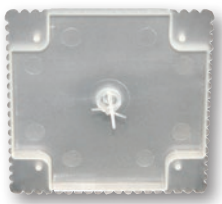
white	9021
light grey	9021g
pack.unit: 25	



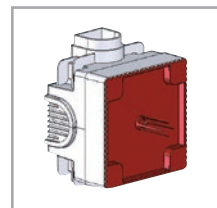
Cover frame 2-way with gasket

- Dimensions: 195 x 105

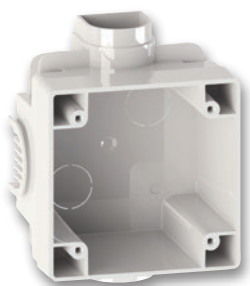
white	9022
light grey	9022g
pack.unit: 25	



Plaster Cover



903
pack.unit: 25



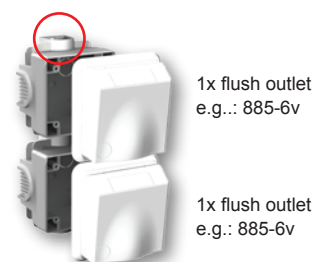
Flush socket

- incl. screws 4 pcs.

light grey	88300
pack.unit: 10	

Installation help:

Connection device for 1-way frame



Sliding connection for 2-way frame



Blank flange for surface socket and flush socket* as accessories

*) assembly only possible with frame cover

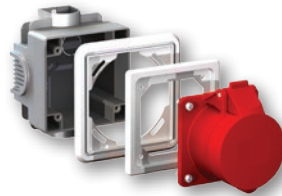
white	tf9092
light grey	tf9092g
pack.unit: 25	



Flange adapter for surface socket and flush socket* as accessories

- for fittings with flange size 75x75mm and fixing center 60x60mm

*) assembly only possible with frame cover



white	tf9091
light grey	tf9091g
pack.unit: 25	



Surface socket

- incl. screws 4 pcs.



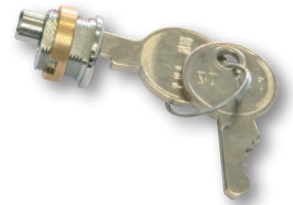
Example:
 1x surface socket 86300
 1x flange adapter tf9091
 1x flanged socket 325-6f7

white	86300
light grey	86300g
pack.unit: 10	



Locking

	901026
simultaneous locking	901025
pack.unit: 1	



Fast and easy installation of the lock by loose locking outbreak

