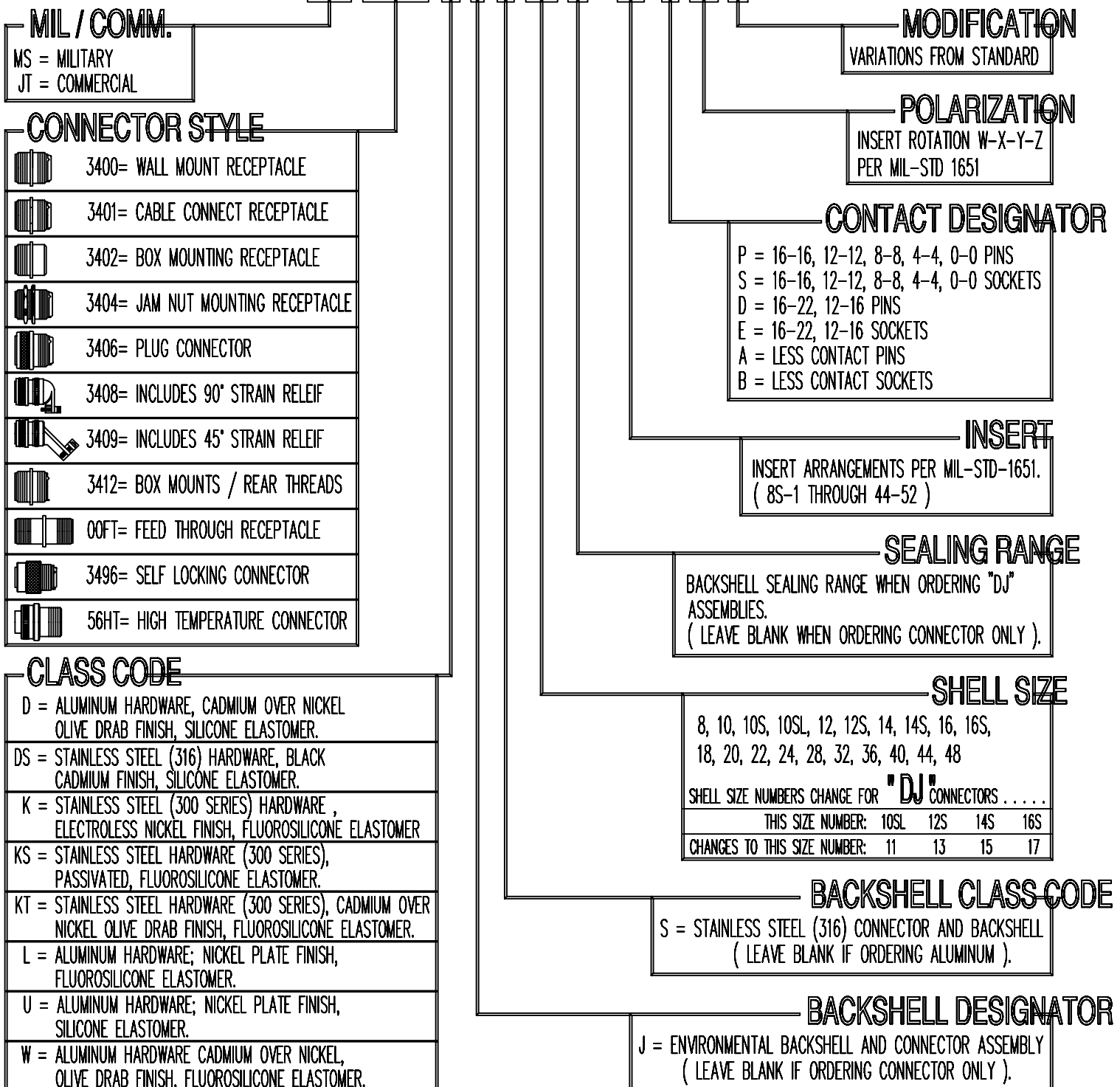


# TABLE OF CONTENTS

ORDERING INFORMATION .....	3
GENERAL PERFORMANCE .....	4 – 5
CONTACTS .....	6 – 7
MIL-C-5015 FRONT RELEASE CONNECTORS.....	8 – 13
SPECIALTY CONNECTORS .....	14 – 17
BACKSHELL ASSEMBLIES .....	18 – 32
CABLE CLAMPS .....	33 – 34
INSERT ARRANGEMENTS / POLARIZATION .....	35 – 50
MOUNTING DIMENSIONS .....	51

# ORDERING INFORMATION












## MS 3406 D J S 28 A - 21 P\*W



### MIL / COMM.

MS = MILITARY  
JT = COMMERCIAL

### CONNECTOR STYLE

-  3400= WALL MOUNT RECEPTACLE
-  3401= CABLE CONNECT RECEPTACLE
-  3402= BOX MOUNTING RECEPTACLE
-  3404= JAM NUT MOUNTING RECEPTACLE
-  3406= PLUG CONNECTOR
-  3408= INCLUDES 90° STRAIN RELIEF
-  3409= INCLUDES 45° STRAIN RELIEF
-  3412= BOX MOUNTS / REAR THREADS
-  00FT= FEED THROUGH RECEPTACLE
-  3496= SELF LOCKING CONNECTOR
-  56HT= HIGH TEMPERATURE CONNECTOR

### CLASS CODE

- D = ALUMINUM HARDWARE, CADMIUM OVER NICKEL OLIVE DRAB FINISH, SILICONE ELASTOMER.
- DS = STAINLESS STEEL (316) HARDWARE, BLACK CADMIUM FINISH, SILICONE ELASTOMER.
- K = STAINLESS STEEL (300 SERIES) HARDWARE, ELECTROLESS NICKEL FINISH, FLUOROSILICONE ELASTOMER
- KS = STAINLESS STEEL HARDWARE (300 SERIES), PASSIVATED, FLUOROSILICONE ELASTOMER.
- KT = STAINLESS STEEL HARDWARE (300 SERIES), CADMIUM OVER NICKEL OLIVE DRAB FINISH, FLUOROSILICONE ELASTOMER.
- L = ALUMINUM HARDWARE; NICKEL PLATE FINISH, FLUOROSILICONE ELASTOMER.
- U = ALUMINUM HARDWARE; NICKEL PLATE FINISH, SILICONE ELASTOMER.
- W = ALUMINUM HARDWARE CADMIUM OVER NICKEL, OLIVE DRAB FINISH, FLUOROSILICONE ELASTOMER.

### MODIFICATION

VARIATIONS FROM STANDARD

### POLARIZATION

INSERT ROTATION W-X-Y-Z  
PER MIL-STD 1651

### CONTACT DESIGNATOR

- P = 16-16, 12-12, 8-8, 4-4, 0-0 PINS
- S = 16-16, 12-12, 8-8, 4-4, 0-0 SOCKETS
- D = 16-22, 12-16 PINS
- E = 16-22, 12-16 SOCKETS
- A = LESS CONTACT PINS
- B = LESS CONTACT SOCKETS

### INSERT

INSERT ARRANGEMENTS PER MIL-STD-1651.  
( 8S-1 THROUGH 44-52 )

### SEALING RANGE

BACKSHELL SEALING RANGE WHEN ORDERING "DJ" ASSEMBLIES.  
( LEAVE BLANK WHEN ORDERING CONNECTOR ONLY ).

### SHELL SIZE

8, 10, 10S, 10SL, 12, 12S, 14, 14S, 16, 16S,  
18, 20, 22, 24, 28, 32, 36, 40, 44, 48

SHELL SIZE NUMBERS CHANGE FOR "DJ" CONNECTORS . . . . .

THIS SIZE NUMBER:	10SL	12S	14S	16S
CHANGES TO THIS SIZE NUMBER:	11	13	15	17

### BACKSHELL CLASS CODE

S = STAINLESS STEEL (316) CONNECTOR AND BACKSHELL  
( LEAVE BLANK IF ORDERING ALUMINUM ).

### BACKSHELL DESIGNATOR

J = ENVIRONMENTAL BACKSHELL AND CONNECTOR ASSEMBLY  
( LEAVE BLANK IF ORDERING CONNECTOR ONLY ).

# GENERAL PERFORMANCE

( WHEN TESTED TO MIL-C-5015 REQUIREMENTS )

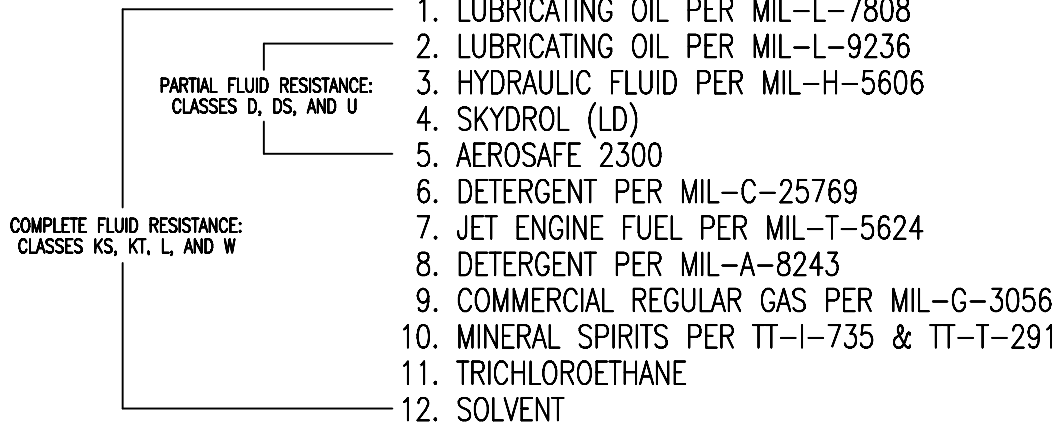
**OPERATING TEMPERATURE:** -55° TO +200° (-67° TO + 392°F)

**ENVIRONMENTAL:** MEETS THE WATER PRESSURE REQUIREMENTS OF MIL-C-5015:  
MAINTAINS INSULATION RESISTANCE OF GREATER THAN 100  
MEGohmS AFTER IMMERSION IN A 6' WATERHEAD FOR 48 HOURS.

**DURABILITY:** MEETS THE MATING AND UNMATING PARAMETERS OF MIL-C-5015:  
MECHANICALLY AND ELECTRICALLY FUNCTIONAL AFTER 500  
COUPLING AND UNCOUPLING CYCLES.

**SHOCK:** HIGH IMPACT SHOCK IN ACCORDANCE WITH MIL-S-901 GRADE A.  
MIL-STD-202, METHOD 214, COND 11 LTR J, 125°C TO 55°C.

**FLUID RESISTANCE:** FLUID RESISTANCE TO 12 BASIC FLUIDS INCLUDING:



**VIBRATION:** MEETS THE VIBRATION REQUIREMENTS OF MIL-C-5015

**SHELL TO SHELL CONDUCTIVITY:** .05 ohm MAXIMUM FOR CLASS D  
.05 ohm MAXIMUM FOR ALL OTHER CLASSES.

**CORROSION RESISTANCE:** PERFORMANCE MEETS OR EXCEEDS SALT SPRAY TEST  
REQUIREMENTS FOR 48 HOURS EXPOSURE (CLASS L & W).  
ALL J-TECH CLASS "D" CONNECTORS WILL EXCEED THE SALT  
SPRAY REQUIREMENT TO 500 HOURS EXPOSURE.  
CLASS "D" CONNECTORS ARE AVAILABLE WITH 1000 HOUR  
CORROSION RESISTANCE.

# GENERAL PERFORMANCE

( WHEN TESTED TO MIL-C-5015 REQUIREMENTS )

VOLTAGE RATING							
ALTITUDE		SERVICE RATING					
FEET	M	INST	A	D	E	B	C
SEA LEVEL	—	1000	2000	2800	3500	4500	7000
70,000	21,326	260	360	400	440	480	560

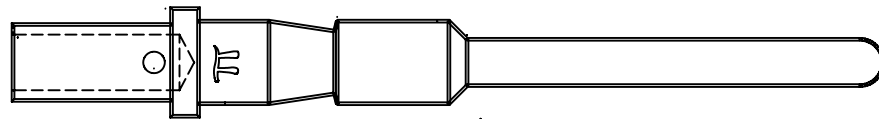
## CONTACT CURRENT RATING AND RETENTION

CONTACT SIZE	CURRENT RATING AMPERE MAX	CONTACT RESISTANCE*	CONTACT RETENTION AXIAL LOAD			
			CLASS D		ALL OTHER CLASSES	
		VOLTAGE DROP MILLIVOLTS	LBS.	NEWTONS	LBS.	NEWTONS
16	13	45	50	222.4	25	111.2
12	23	38	50	222.4	30	133.4
8	46	24	80	355.84	50	222.4
4	80	21	100	444.8	60	266.9
0	150	19	100	444.8	75	333.6

\* CONTACT RESISTANCE WITH SILVER PLATED WIRE @ 25°C.

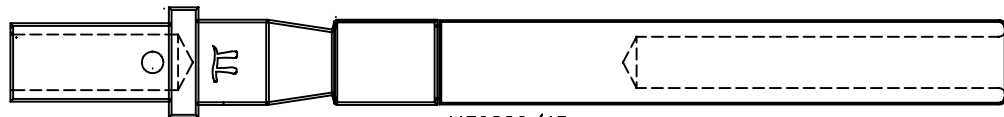
HIGH POTENTIAL TEST VOLTAGE				
MS SERVICE RATING	SUGGESTED OPERATING VOLTAGES		AIR SPACING NOM. INCHES	CREEPAGE DISTANCE NOM. INCHES
	DC	AC(rms)		
INST.	250	200	—	1/16
A	700	500	1/16	1/8
D	1250	900	1/8	3/16
E	1750	1250	3/16	1/4
B	2450	1750	1/4	5/16
C	4200	3000	5/16	1

# PIN CONTACTS



CONTACT SIZE	WIRE SIZE	WIRE AWG	MIL-C-39029 PART NUMBER	J-TECH PART NUMBER	COLOR CODE		
					FIRST	SECOND	THIRD
16	22	22,24,26	M39029/44-287	511-110-1622	RED	GRAY	VIOLET
16	16	16,18,20	M39029/44-288	511-110-1616	RED	GRAY	GRAY
12	16	16,18,20	M39029/44-289	511-220-1216	RED	GRAY	WHITE
12	12	12,14,16	M39029/44-290	511-220-1212	RED	WHITE	BLACK
8	8	8,10	M39029/44-291	511-220-0808	RED	WHITE	BROWN
4	4	4,6	M39029/44-292	511-220-0404	RED	WHITE	RED
0	0	0,2	M39029/44-293	511-320-0101	RED	WHITE	ORANGE

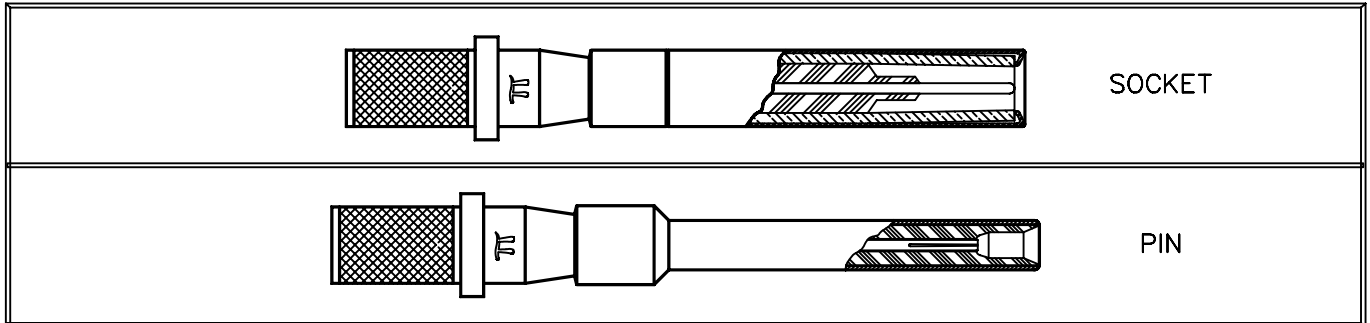
# SOCKET CONTACTS



CONTACT SIZE	WIRE SIZE	WIRE AWG	MIL-C-39029 PART NUMBER	J-TECH PART NUMBER	COLOR CODE		
					FIRST	SECOND	THIRD
16	22	22,24,26	M39029/45-294	512-110-1622	RED	WHITE	YELLOW
16	16	16,18,20	M39029/45-295	512-110-1616	RED	WHITE	GREEN
12	16	16,18,20	M39029/45-296	512-220-1216	RED	WHITE	BLUE
12	12	12,14,16	M39029/45-297	512-220-1212	RED	WHITE	VIOLET
8	8	8,10	M39029/45-298	512-220-0808	RED	WHITE	GRAY
4	4	4,6	M39029/45-299	512-220-0404	RED	WHITE	WHITE
0	0	0,2	M39029/45-300	512-320-0101	ORANGE	BLACK	BLACK

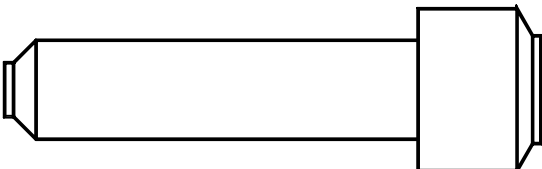
# COAX CONTACTS

(CONSULT FACTORY FOR SIZES AND AVAILABILITY)



# SEALING PLUGS

CONTACT SIZE	SEALING PLUGS	
	MILITARY P/N	J-TECH P/N
16S	MS27488-16	022-001-0016
16	MS27488-16	022-001-0016
12	MS27488-12	022-001-0012
8	MS27488-8	022-001-0008
4	MS27488-4	022-001-0004
0	MS27488-0	022-001-0001



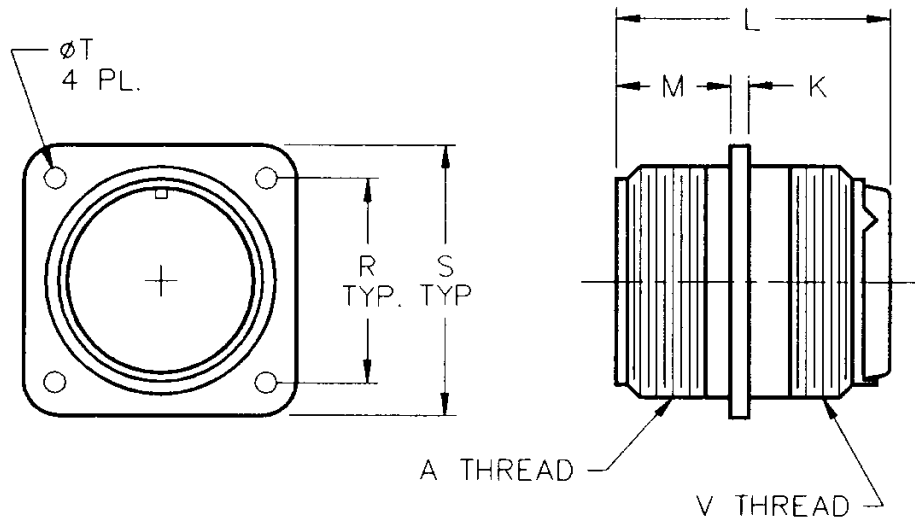
# TOOLS

CONTACT SIZE	MS INSERTION TOOL	MS EXTRACTION TOOL	MS CRIMP TOOL	
			FRAME	POSITIONER
16	M81969/17-01	M81969/19-01	M22520/1-01	M22520/1-02
12	M81969/17-02	M81969/19-02	M22520/1-01	M22520/1-02
8*	M81969/17-06	M81969/19-03	M22520/23-02	M22520/23-09
4*	M81969/17-07	M81969/19-04	M22520/23-04	M22520/23-11
0*	M81969/17-08	M81969/19-05	M22520/23-05	M22520/23-13

\* USE M22520/23-01 POWER CRIMP TOOLS FOR SIZE 8, 4, AND 0 CONTACTS.

# FRONT RELEASE MS3400

CLASSES D, DS, L, KS, KT, U, AND W



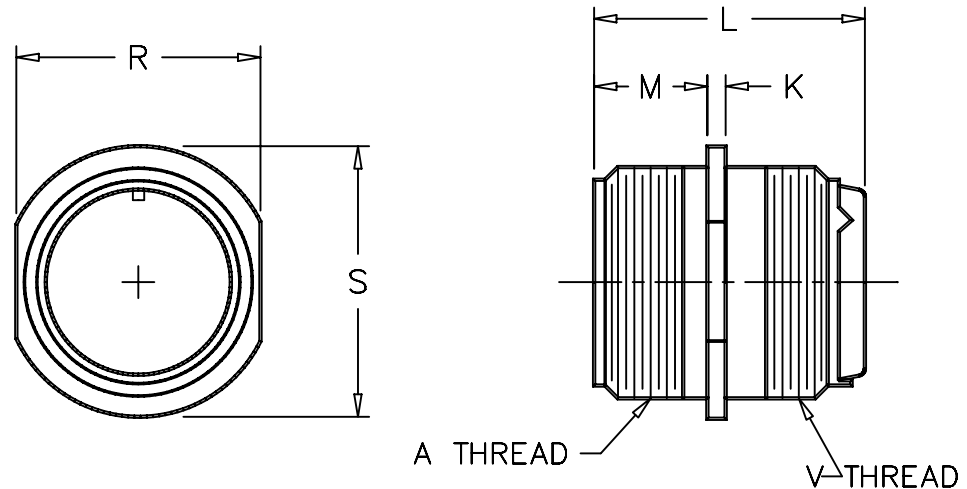
RECEPTACLE, WALL MOUNTING, FRONT RELEASE, CRIMP CONTACTS  
 DIMENSIONS SUBJECT TO CHANGE WITHOUT NOTICE. DIMENSIONS ARE IN INCHES

SHELL SIZE	A THREAD CLASS 2A	K ±.015	L * MAX.	M +.031 -.000	R ±.005	S ±.031	øT <sup>+ .010</sup> <sub>- .005</sub>		V THREAD CLASS 2A
							CLASS D, DS, L, U, W	CLASS KS, KT	
10S	.625-24 UNEF	.083	1.925	.562	.719	1.000	.120	.150	.625-24 UNEF
10SL	.625-24 UNEF	.083	1.925	.562	.719	1.000	.120	.150	.625-24 UNEF
12S	.750-20 UNEF	.083	1.925	.562	.812	1.094	.120	.150	.750-20 UNEF
12	.750-20 UNEF	.083	1.925	.750	.812	1.094	.120	.150	.750-20 UNEF
14S	.875-20 UNEF	.083	1.925	.562	.906	1.188	.120	.150	.875-20 UNEF
14	.875-20 UNEF	.083	1.925	.750	.906	1.188	.120	.150	.875-20 UNEF
16S	1.000-20 UNEF	.083	1.925	.562	.969	1.281	.120	.150	1.000-20 UNEF
16	1.000-20 UNEF	.083	1.925	.750	.969	1.281	.120	.150	1.000-20 UNEF
18	1.125-18 UNEF	.125	1.925	.750	1.062	1.375	.120	.177	1.0625-18 UNEF
20	1.250-18 UNEF	.125	1.950	.750	1.156	1.500	.120	.177	1.1875-18 UNEF
22	1.375-18 UNEF	.125	1.950	.750	1.250	1.625	.120	.177	1.3125-18 UNEF
24	1.500-18 UNEF	.125	1.950	.812	1.375	1.750	.147	.177	1.4375-18 UNEF
28	1.750-18 UNS	.125	1.950	.812	1.562	2.000	.147	.177	1.750-18 UNS
32	2.000-18 UNS	.125	1.950	.875	1.750	2.250	.173	.209	2.000-18 UNS
36	2.250-16 UN	.125	1.950	.875	1.938	2.500	.173	.209	2.250-16 UN
40	2.500-16 UN	.125	1.950	.875	2.188	2.750	.173	.209	2.500-16 UN
44	2.750-16 UN	.125	1.950	.875	2.375	3.000	.173	.209	2.750-16 UN
48	3.000-16 UN	.125	1.950	.875	2.625	3.250	.173	.209	3.000-16 UN

\* ADD .435 FOR ARRANGEMENTS WITH SIZE 0 CONTACTS.

# FRONT RELEASE MS3401

## CLASSES D, DS, L, U, AND W



RECEPTACLE, CABLE CONNECTING, FRONT RELEASE, CRIMP CONTACTS.  
DIMENSIONS SUBJECT TO CHANGE WITHOUT NOTICE. DIMENSIONS ARE IN INCHES

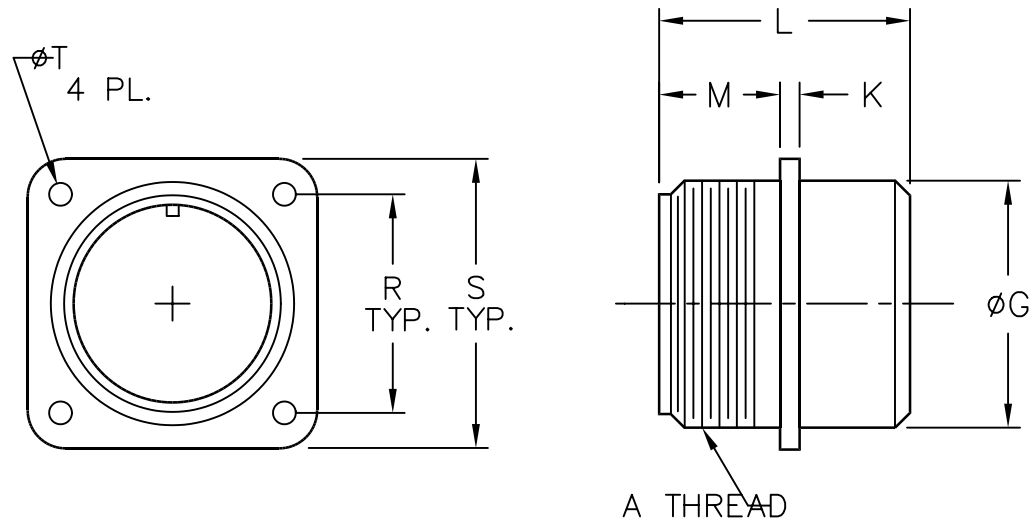
SHELL SIZE	A THREAD CLASS 2A	K ±.015	L * MAX.	M $\begin{matrix} +.031 \\ -.000 \end{matrix}$	R ±.004	S ±.015	V THREAD CLASS 2A
10S	.625-24 UNEF	.083	1.925	.562	.625	.854	.625-24 UNEF
10SL	.625-24 UNEF	.083	1.925	.562	.625	.854	.625-24 UNEF
12S	.750-20 UNEF	.083	1.925	.562	.750	.974	.750-20 UNEF
12	.750-20 UNEF	.083	1.925	.750	.750	.974	.750-20 UNEF
14S	.875-20 UNEF	.083	1.925	.562	.875	1.099	.875-20 UNEF
14	.875-20 UNEF	.083	1.925	.750	.875	1.099	.875-20 UNEF
16S	1.000-20 UNEF	.083	1.925	.562	1.000	1.224	1.000-20 UNEF
16	1.000-20 UNEF	.083	1.925	.750	1.000	1.224	1.000-20 UNEF
18	1.125-18 UNEF	.125	1.925	.750	1.125	1.349	1.0625-18 UNEF
20	1.250-18 UNEF	.125	1.950	.750	1.250	1.474	1.1875-18 UNEF
22	1.375-18 UNEF	.125	1.950	.750	1.375	1.599	1.3125-18 UNEF
24	1.500-18 UNEF	.125	1.950	.812	1.500	1.715	1.4375-18 UNEF
28	1.750-18 UNS	.125	1.950	.812	1.750	1.974	1.750-18 UNS
32	2.000-18 UNS	.125	1.950	.875	2.000	2.224	2.000-18 UNS
36	2.250-16 UN	.125	1.950	.875	2.250	2.474	2.250-16 UN
40	2.500-16 UN	.125	1.950	.875	2.505	2.724	2.500-16 UN
44	2.750-16 UN	.125	1.950	.875	2.755	2.974	2.750-16 UN
48	3.000-16 UN	.125	1.950	.875	3.050	3.224	3.000-16 UN

\* ADD .435 FOR ARRANGEMENTS WITH SIZE 0 CONTACTS.



# FRONT RELEASE MS3402

## CLASSES D, DS, L, U, AND W



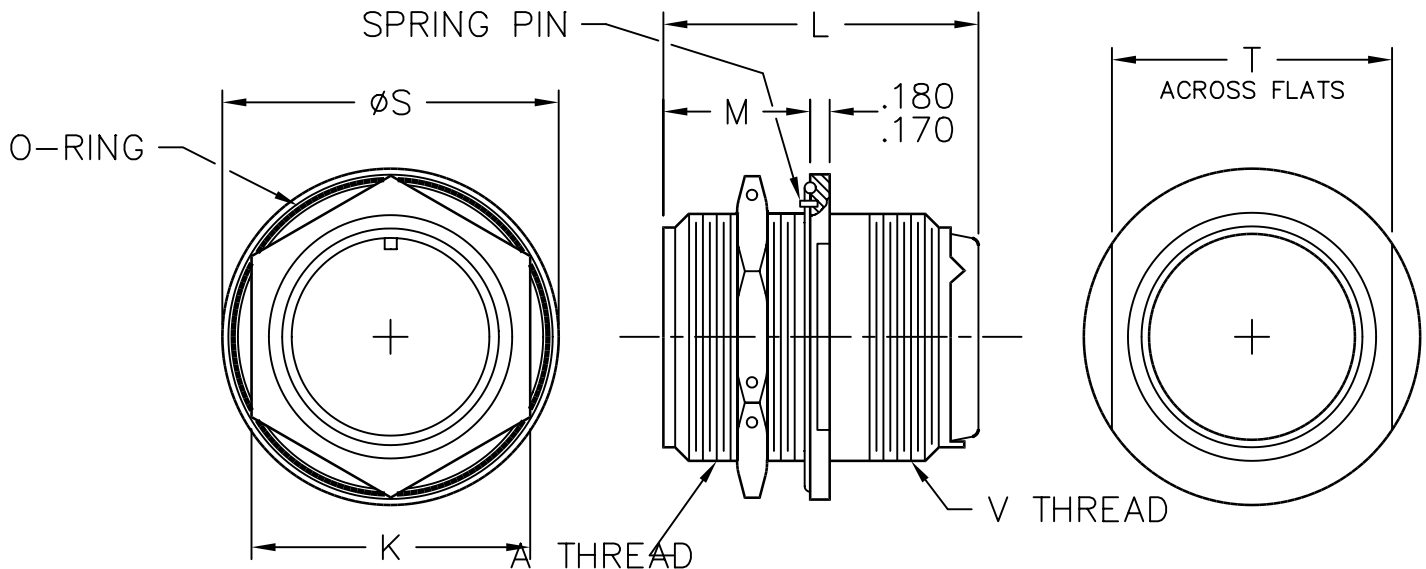
RECEPTACLE, BOX MOUNTING, FRONT RELEASE, CRIMP CONTACTS.  
 ( NO ENVIRONMENTAL REAR SEAL OR REAR ACCESSORY THREADS ).  
 DIMENSIONS SUBJECT TO CHANGE WITHOUT NOTICE. DIMENSIONS ARE IN INCHES

SHELL SIZE	A THREAD CLASS 2A	ØG MAX.	K ±.015	L * MAX.	M $\begin{matrix} +.031 \\ -.000 \end{matrix}$	R ±.005	S ±.031	ØT $\begin{matrix} +.010 \\ -.005 \end{matrix}$ CLASS L,L,W
10S	.625-24 UNEF	.625	.083	1.662	.562	.719	1.000	.120
10SL	.625-24 UNEF	.625	.083	1.662	.562	.719	1.000	.120
12S	.750-20 UNEF	.750	.083	1.662	.562	.812	1.094	.120
12	.750-20 UNEF	.750	.083	1.662	.750	.812	1.094	.120
14S	.875-20 UNEF	.875	.083	1.662	.562	.906	1.188	.120
14	.875-20 UNEF	.875	.083	1.662	.750	.906	1.188	.120
16S	1.000-20 UNEF	1.000	.083	1.662	.562	.969	1.281	.120
16	1.000-20 UNEF	1.000	.083	1.662	.750	.969	1.281	.120
18	1.125-18 UNEF	1.062	.125	1.662	.750	1.062	1.375	.120
20	1.250-18 UNEF	1.187	.125	1.662	.750	1.156	1.500	.120
22	1.375-18 UNEF	1.312	.125	1.662	.750	1.250	1.625	.120
24	1.500-18 UNEF	1.437	.125	1.662	.812	1.375	1.750	.147
28	1.750-18 UNS	1.750	.125	1.662	.812	1.562	2.000	.147
32	2.000-18 UNS	2.000	.125	1.662	.875	1.750	2.250	.173
36	2.250-16 UN	2.250	.125	1.662	.875	1.938	2.500	.173
40	2.500-16 UN	2.500	.125	1.662	.875	2.188	2.750	.173
44	2.750-16 UN	2.750	.125	1.662	.875	2.375	3.000	.173
48	3.000-16 UN	3.000	.125	1.662	.875	2.625	3.250	.173

\* ADD .275 FOR ARRANGEMENTS WITH SIZE 8, 4, OR 0 CONTACTS.

# FRONT RELEASE MS3404

## CLASSES D, DS, L, U, AND W



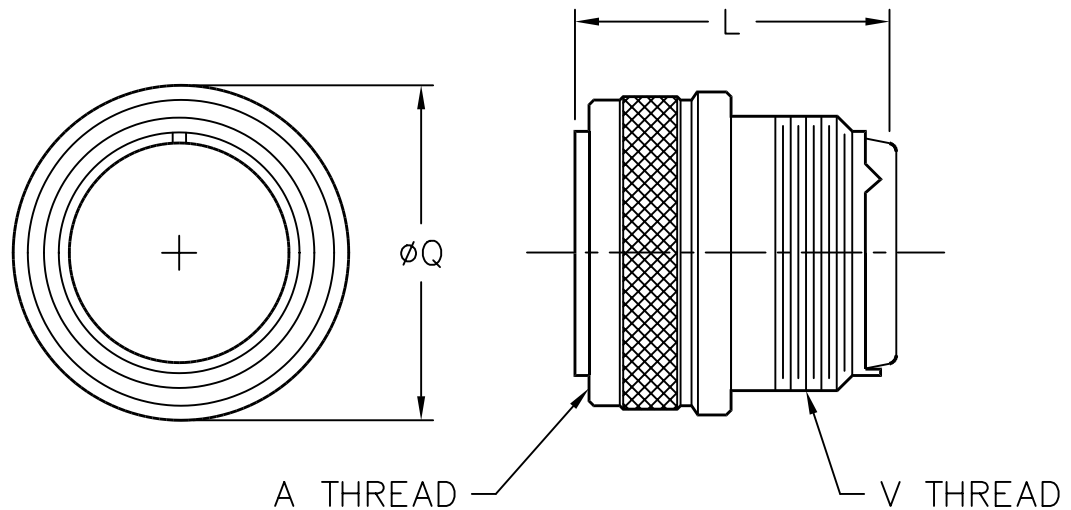
RECEPTACLE, JAM-NUT MOUNTING, FRONT RELEASE, CRIMP CONTACTS.  
 DIMENSIONS SUBJECT TO CHANGE WITHOUT NOTICE. DIMENSIONS ARE IN INCHES

SHELL SIZE	A THREAD CLASS 2A	K $\pm .010$	L * MAX.	M $\pm .005$	$\phi S$ $\pm .005$	T $\pm .005$	V THREAD CLASS 2A
10S	.625-24 UNEF	.812	1.925	.720	1.193	.990	.625-24 UNEF
10SL	.625-24 UNEF	.812	1.925	.720	1.193	.990	.625-24 UNEF
12S	.750-20 UNEF	.937	1.925	.720	1.317	1.050	.750-20 UNEF
12	.750-20 UNEF	.937	1.925	.966	1.317	1.050	.750-20 UNEF
14S	.875-20 UNEF	1.062	1.925	.720	1.433	1.175	.875-20 UNEF
14	.875-20 UNEF	1.062	1.925	.966	1.433	1.175	.875-20 UNEF
16S	1.000-20 UNEF	1.187	1.925	.720	1.567	1.300	1.000-20 UNEF
16	1.000-20 UNEF	1.187	1.925	.966	1.567	1.300	1.000-20 UNEF
18	1.125-18 UNEF	1.312	1.925	.966	1.693	1.425	1.0625-18 UNEF
20	1.250-18 UNEF	1.437	1.950	.966	1.817	1.550	1.1875-18 UNEF
22	1.375-18 UNEF	1.562	1.950	.966	1.943	1.550	1.3125-18 UNEF
24	1.500-18 UNEF	1.687	1.950	.966	2.067	1.800	1.4375-18 UNEF
28	1.750-18 UNS	2.000	1.950	.966	2.317	1.925	1.750-18 UNS
32	2.000-18 UNS	2.250	1.950	.966	2.567	2.175	2.000-18 UNS
36	2.250-16 UN	2.500	1.950	.966	2.817	2.550	2.250-16 UN
40	2.500-16 UN	2.750	1.950	.966	3.061	2.800	2.500-16 UN
44	2.750-16 UN	3.000	1.950	.966	3.311	3.050	2.750-16 UN
48	3.000-16 UN	3.250	1.950	.966	3.561	3.300	3.000-16 UN

\* ADD .435 FOR ARRANGEMENTS WITH SIZE 0 CONTACTS.

# FRONT RELEASE MS3406

## CLASSES D, DS, L, KS, KT, U, AND W



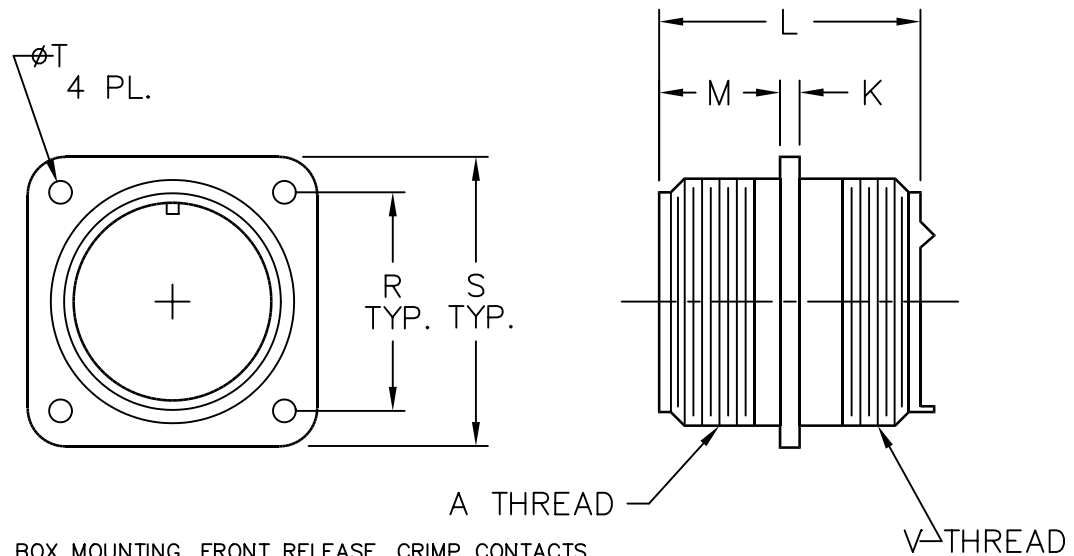
PLUG, FRONT RELEASE, CRIMP CONTACTS.  
 DIMENSIONS SUBJECT TO CHANGE WITHOUT NOTICE.  
 DIMENSIONS ARE IN INCHES.

SHELL SIZE	A THREAD CLASS 2B	L * MAX.	$\phi Q$ MAX.	V THREAD CLASS 2A
10S	.625-24 UNEF	1.925	.969	.625-24 UNEF
10SL	.625-24 UNEF	1.925	.969	.625-24 UNEF
12S	.750-20 UNEF	1.925	1.062	.750-20 UNEF
12	.750-20 UNEF	1.925	1.062	.750-20 UNEF
14S	.875-20 UNEF	1.925	1.156	.875-20 UNEF
14	.875-20 UNEF	1.925	1.156	.875-20 UNEF
16S	1.000-20 UNEF	1.925	1.250	1.000-20 UNEF
16	1.000-20 UNEF	1.925	1.250	1.000-20 UNEF
18	1.125-18 UNEF	1.925	1.344	1.0625-18 UNEF
20	1.250-18 UNEF	1.950	1.469	1.1875-18 UNEF
22	1.375-18 UNEF	1.950	1.594	1.3125-18 UNEF
24	1.500-18 UNEF	1.950	1.719	1.4375-18 UNEF
28	1.750-18 UNS	1.950	1.969	1.750-18 UNS
32	2.000-18 UNS	1.950	2.219	2.000-18 UNS
36	2.250-16 UN	1.950	2.469	2.250-16 UN
40	2.500-16 UN	1.950	2.719	2.500-16 UN
44	2.750-16 UN	1.950	2.969	2.750-16 UN
48	3.000-16 UN	1.950	3.219	3.000-16 UN

\* ADD .435 FOR ARRANGEMENTS WITH SIZE 0 CONTACTS.

# FRONT RELEASE MS3412

## CLASSES D, DS, L, U, AND W



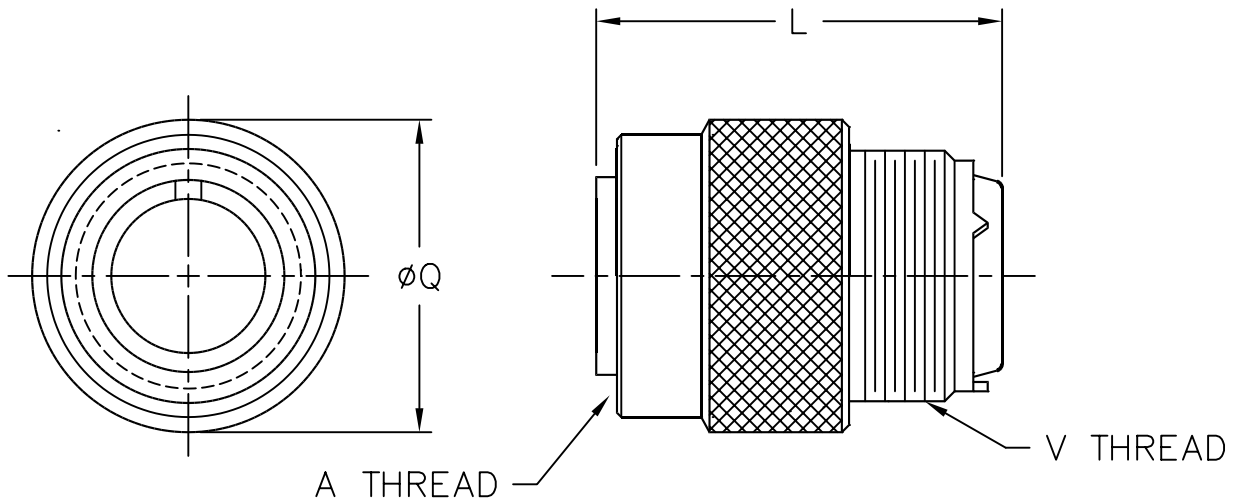
RECEPTACLE, BOX MOUNTING, FRONT RELEASE, CRIMP CONTACTS,  
WITH REAR ACCESSORY THREADS ( NO ENVIRONMENTAL REAR SEAL ).  
DIMENSIONS SUBJECT TO CHANGE WITHOUT NOTICE. DIMENSIONS ARE IN INCHES

SHELL SIZE	A THREAD CLASS 2A	K ±.015	L * MAX.	M +.031 -.000	R ±.005	S ±.031	∅T <sup>+.010</sup> <sub>-.005</sub>	V THREAD CLASS 2A
							CLASS D,DS,L	
10S	.625-24 UNEF	.083	1.550	.562	.719	1.000	.120	.625-24 UNEF
10SL	.625-24 UNEF	.083	1.550	.562	.719	1.000	.120	.625-24 UNEF
12S	.750-20 UNEF	.083	1.550	.562	.812	1.094	.120	.750-20 UNEF
12	.750-20 UNEF	.083	1.550	.750	.812	1.094	.120	.750-20 UNEF
14S	.875-20 UNEF	.083	1.550	.562	.906	1.188	.120	.875-20 UNEF
14	.875-20 UNEF	.083	1.550	.750	.906	1.188	.120	.875-20 UNEF
16S	1.000-20 UNEF	.083	1.550	.562	.969	1.281	.120	1.000-20 UNEF
16	1.000-20 UNEF	.083	1.550	.750	.969	1.281	.120	1.000-20 UNEF
18	1.125-18 UNEF	.125	1.550	.750	1.062	1.375	.120	1.0625-18 UNEF
20	1.250-18 UNEF	.125	1.600	.750	1.156	1.500	.120	1.1875-18 UNEF
22	1.375-18 UNEF	.125	1.600	.750	1.250	1.625	.120	1.3125-18 UNEF
24	1.500-18 UNEF	.125	1.600	.812	1.375	1.750	.147	1.4375-18 UNEF
28	1.750-18 UNS	.125	1.600	.812	1.562	2.000	.147	1.750-18 UNS
32	2.000-18 UNS	.125	1.600	.875	1.750	2.250	.173	2.000-18 UNS
36	2.250-16 UN	.125	1.600	.875	1.938	2.500	.173	2.250-16 UN
40	2.500-16 UN	.125	1.600	.875	2.188	2.750	.173	2.500-16 UN
44	2.750-16 UN	.125	1.600	.875	2.375	3.000	.173	2.750-16 UN
48	3.000-16 UN	.125	1.600	.875	2.625	3.250	.173	3.000-16 UN

\* ADD .337 FOR ARRANGEMENTS WITH SIZE 8, 4 OR 0 CONTACTS.

# JT3496 SELF LOCKING PLUG

CLASSES D, DS, L, KS, KT, U, AND W



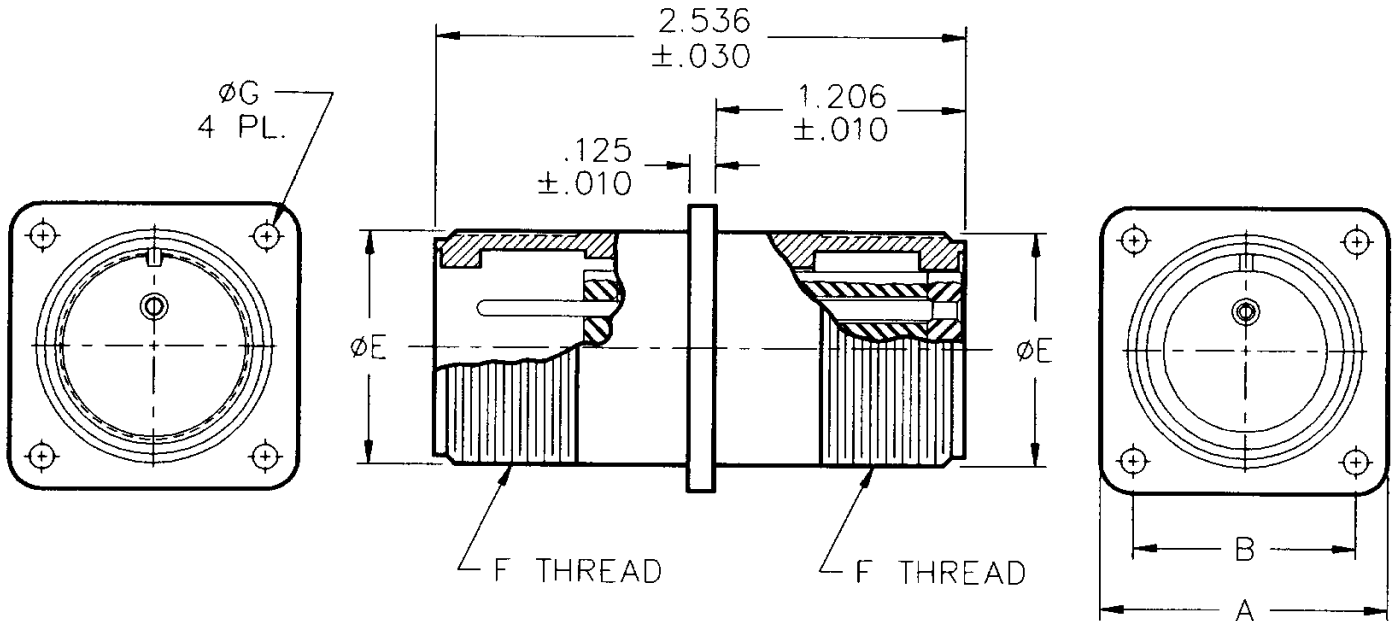
SELF LOCKING PLUG, FRONT RELEASE, CRIMP CONTACTS.  
 DIMENSIONS SUBJECT TO CHANGE WITHOUT NOTICE.  
 DIMENSIONS ARE IN INCHES.

SHELL SIZE	A THREAD CLASS 2B	L * MAX.	øQ MAX.	V THREAD CLASS 2A
10S	.625-24 UNEF	1.925	.969	.625-24 UNEF
10SL	.625-24 UNEF	1.925	.969	.625-24 UNEF
12S	.750-20 UNEF	1.925	1.062	.750-20 UNEF
12	.750-20 UNEF	1.925	1.062	.750-20 UNEF
14S	.875-20 UNEF	1.925	1.156	.875-20 UNEF
14	.875-20 UNEF	1.925	1.156	.875-20 UNEF
16S	1.000-20 UNEF	1.925	1.250	1.000-20 UNEF
16	1.000-20 UNEF	1.925	1.250	1.000-20 UNEF
18	1.125-18 UNEF	1.925	1.344	1.0625-18 UNEF
20	1.250-18 UNEF	1.950	1.469	1.1875-18 UNEF
22	1.375-18 UNEF	1.950	1.594	1.3125-18 UNEF
24	1.500-18 UNEF	1.950	1.719	1.4375-18 UNEF
28	1.750-18 UNS	1.950	1.969	1.750-18 UNS
32	2.000-18 UNS	1.950	2.219	2.000-18 UNS
36	2.250-16 UN	1.950	2.469	2.250-16 UN

\* ADD .435 FOR ARRANGEMENTS WITH SIZE 0 CONTACTS.

# JTOOFT

## FEED THROUGH RECEPTACLE

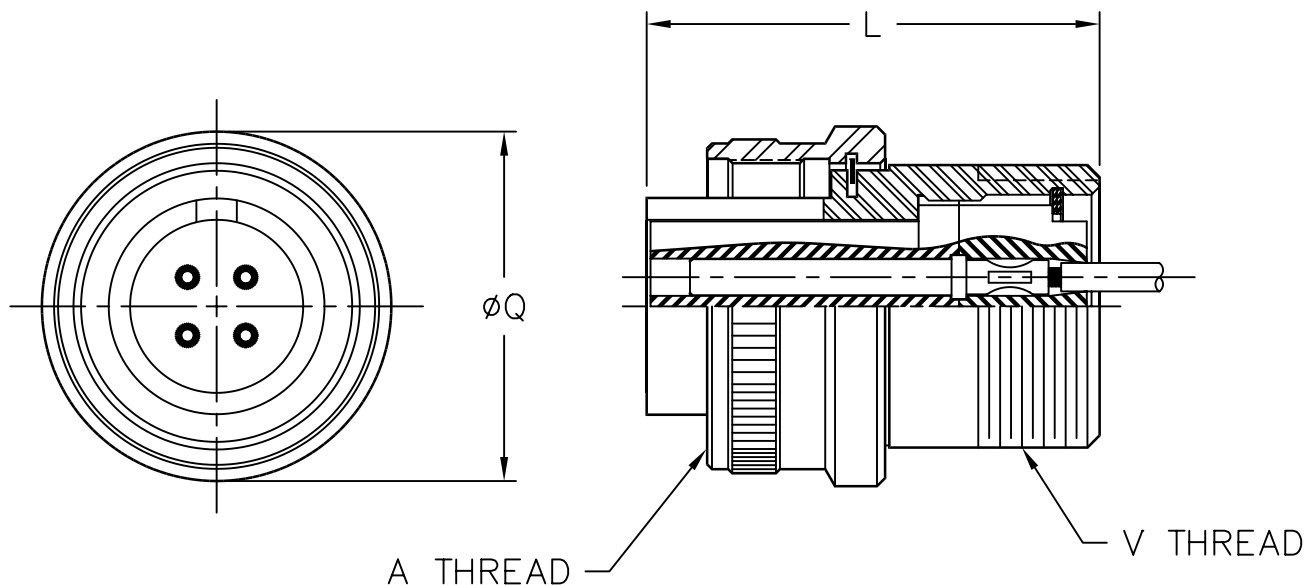


MATES WITH ALL MIL-C-5015 G TYPE PLUG CONNECTORS.  
 AVAILABLE IN PIN/PIN, SOCKET/SOCKET, OR PIN/SOCKET.  
 DIMENSIONS SUBJECT TO CHANGE WITHOUT NOTICE. DIMENSIONS ARE IN INCHES.  
 CONSULT FACTORY FOR ORDERING INFORMATION.

SHELL SIZE	A ±.020	B ±.005	øE +.005 -.009	F THREAD CLASS 2A	øG +.013 -.000
08	.875	.594	.497	.500-28 UNEF	.120
10	1.000	.719	.622	.625-24 UNEF	.120
12	1.094	.812	.747	.750-20 UNEF	.120
14	1.188	.906	.872	.875-20 UNEF	.120
16	1.281	.969	.997	1.000-20 UNEF	.120
18	1.375	1.062	1.122	1.125-18 UNEF	.120
20	1.500	1.156	1.247	1.250-18 UNEF	.120
22	1.625	1.250	1.372	1.375-18 UNEF	.120
24	1.750	1.375	1.497	1.500-18 UNEF	.147
28	2.000	1.562	1.747	1.750-18 UNS	.147
32	2.250	1.750	1.997	2.000-18 UNS	.173
36	2.500	1.938	2.247	2.250-16 UN	.173
40	2.750	2.188	2.497	2.500-16 UN	.173
44	3.000	2.375	2.747	2.750-16 UN	.173
48	3.250	2.625	2.997	3.000-16 UN	.173

# JT56HT\*

## HIGH TEMPERATURE CONNECTOR



CONSULT FACTORY FOR AVAILABLE INSERTS AND ORDERING INFORMATION.  
DIMENSIONS SUBJECT TO CHANGE WITHOUT NOTICE.  
DIMENSIONS ARE IN INCHES.

SHELL SIZE	A THREAD CLASS 2B	L * MAX.	øQ MAX.	V THREAD CLASS 2A
8S	.500-28 UNEF	1.925	.770	.500-20 UNF
10S	.625-24 UNEF	1.925	.870	.625-24 UNEF
10SL	.625-24 UNEF	1.925	.870	.625-24 UNEF
12	.750-20 UNEF	1.925	.995	.750-20 UNEF
12S	.750-20 UNEF	1.925	.995	.750-20 UNEF
14	.875-20 UNEF	1.925	1.120	.875-20 UNEF
14S	.875-20 UNEF	1.925	1.120	.875-20 UNEF
16	1.000-20 UNEF	1.925	1.240	1.000-20 UNEF
16S	1.000-20 UNEF	1.925	1.240	1.000-20 UNEF
18	1.125-18 UNEF	1.925	1.330	1.0625-18 UNEF
20	1.250-18 UNEF	1.950	1.460	1.1875-18 UNEF
22	1.375-18 UNEF	1.950	1.580	1.3125-18 UNEF
24	1.500-18 UNEF	1.950	1.710	1.4375-18 UNEF
28	1.750-18 UNS	1.950	1.960	1.750-18 UNS
32	2.000-18 UNS	1.950	2.210	2.000-18 UNS
36	2.250-16 UN	1.950	2.460	2.250-16 UN

\* ADD .435 FOR ARRANGEMENTS WITH SIZE 0 CONTACTS.

# JTFW100\*

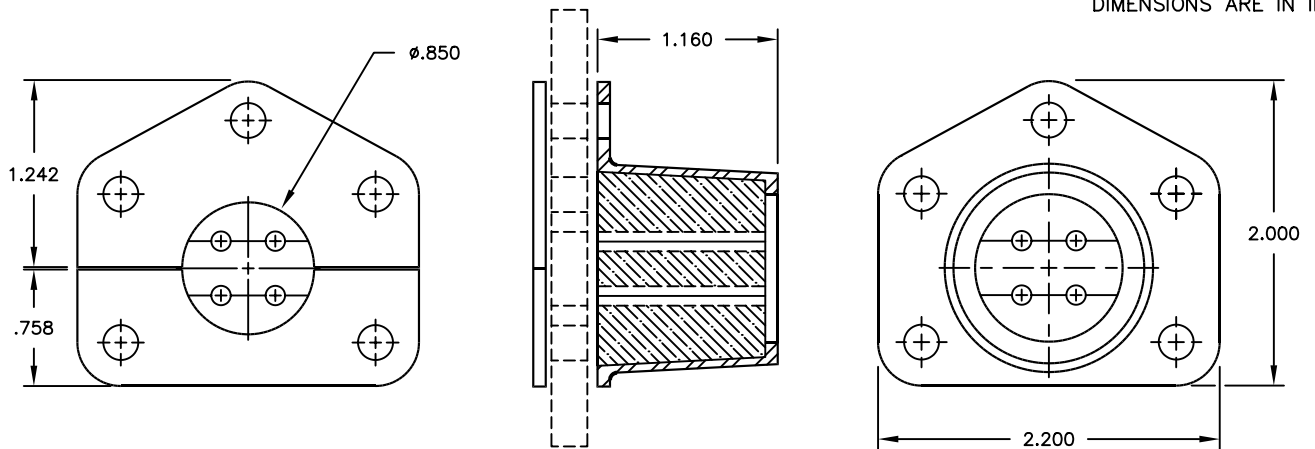
## FIREWALL WIRE FEED THROUGH CONNECTOR

- ⇒ WITHSTANDS UP TO 2000°F FOR 15 MINUTES WITH NO WIRE BURN THROUGH.
- ⇒ AVAILABLE IN REPAIRABLE OR NON-REPAIRABLE VERSIONS.
- ⇒ CONSULT FACTORY FOR ADDITIONAL SIZE AVAILABILITY, APPLICATIONS, AND ORDERING INFORMATION.

### JTFW1000 REPAIRABLE

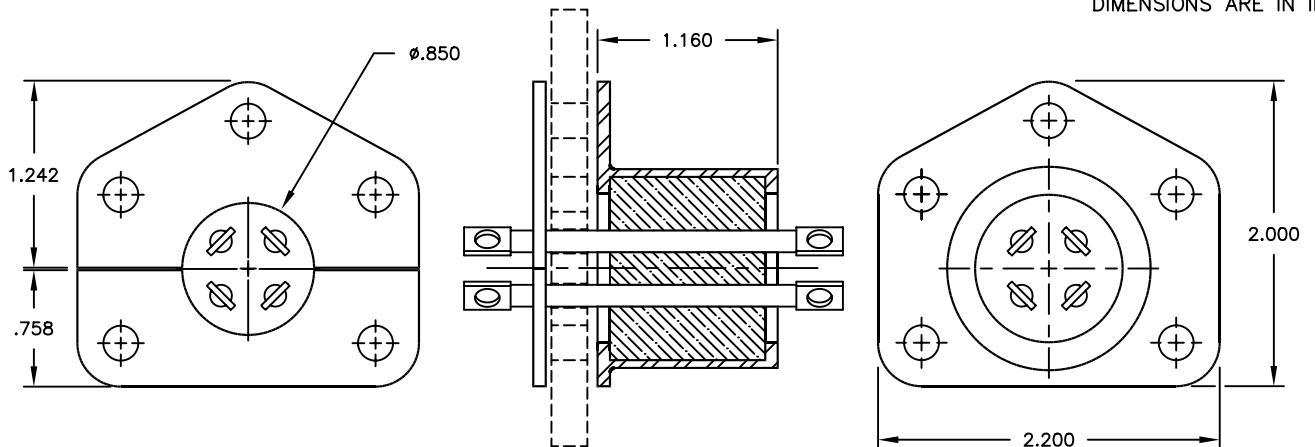
PATENT PENDING

DIMENSIONS ARE IN INCHES.



### JTFW1001 NON-REPAIRABLE

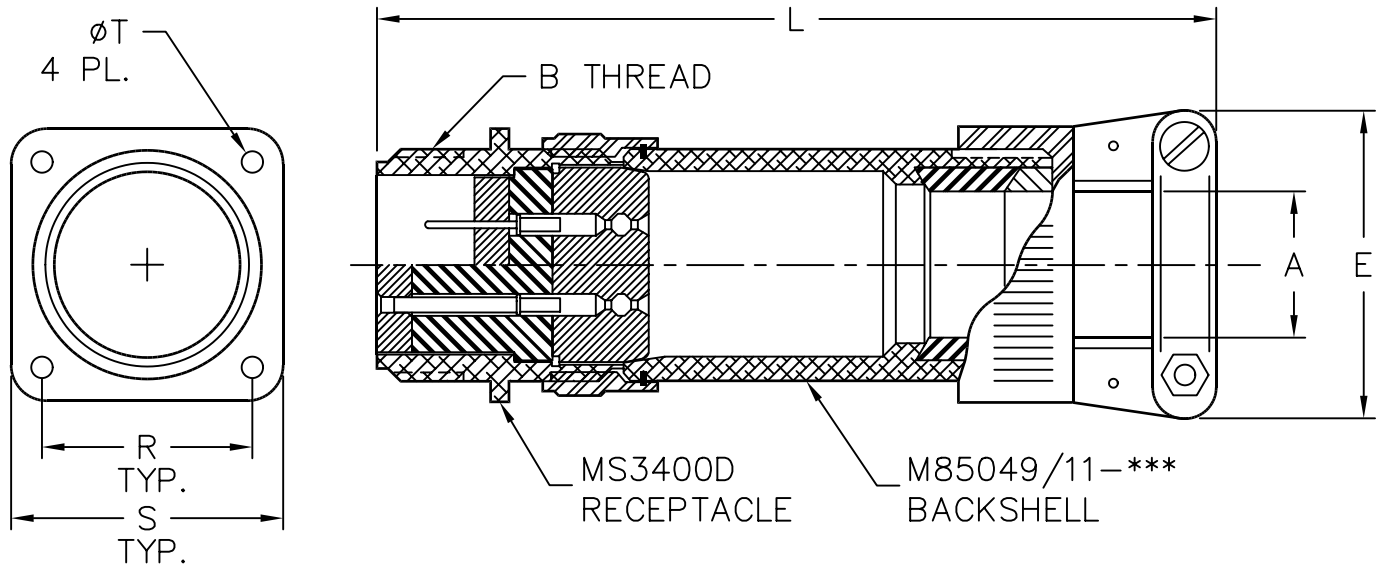
DIMENSIONS ARE IN INCHES.





# MS3400DJ

## WALL MOUNT RECEPTACLE STRAIGHT BACKSHELL ASSEMBLY



ASSEMBLY NO.	CONNECTOR RECEPTACLE NO.	BACKSHELL ASSEMBLY NO.	A CABLE ENTRY		B THREAD CLASS 2A	E MAX.	L* MAX.	R ±.005	S ±.031	ØT MAX.
			MAX.	MIN.						
MS3400DJ 10AXX	MS3400D-10S-XX	M85049/11-09W	.312	.125	.625-24 UNEF	.957	4.938	.719	1.000	.120
MS3400DJ 10BXX	MS3400D-10S-XX	M85049/11-11W	.437	.250	.625-24 UNEF	1.145	5.688	.719	1.000	.120
MS3400DJ 10DXX	MS3400D-10S-XX	M85049/11-136W	.375	.250	.625-24 UNEF	1.145	4.938	.719	1.000	.120
MS3400DJ 11AXX	MS3400D-10SL-XX	M85049/11-09W	.312	.125	.625-24 UNEF	.957	4.938	.719	1.000	.120
MS3400DJ 11BXX	MS3400D-10SL-XX	M85049/11-11W	.437	.250	.625-24 UNEF	1.145	5.688	.719	1.000	.120
MS3400DJ 11DXX	MS3400D-10SL-XX	M85049/11-136W	.375	.250	.625-24 UNEF	1.145	4.938	.719	1.000	.120
MS3400DJ 12AXX	MS3400D-12-XX	M85049/11-114W	.312	.125	.750-20 UNEF	.957	4.938	.812	1.094	.120
MS3400DJ 12BXX	MS3400D-12-XX	M85049/11-15W	.625	.350	.750-20 UNEF	1.332	5.688	.812	1.094	.120
MS3400DJ 12DXX	MS3400D-12-XX	M85049/11-138W	.500	.350	.750-20 UNEF	1.332	4.938	.812	1.094	.120
MS3400DJ 12EXX	MS3400D-12-XX	M85049/11-13W	.437	.250	.750-20 UNEF	1.145	4.938	.812	1.094	.120
MS3400DJ 13AXX	MS3400D-12S-XX	M85049/11-114W	.312	.125	.750-20 UNEF	.957	4.938	.812	1.094	.120
MS3400DJ 13BXX	MS3400D-12S-XX	M85049/11-15W	.625	.350	.750-20 UNEF	1.332	5.688	.812	1.094	.120
MS3400DJ 13DXX	MS3400D-12S-XX	M85049/11-138W	.500	.350	.750-20 UNEF	1.332	4.938	.812	1.094	.120
MS3400DJ 13EXX	MS3400D-12S-XX	M85049/11-13W	.437	.250	.750-20 UNEF	1.145	4.938	.812	1.094	.120
MS3400DJ 14AXX	MS3400D-14-XX	M85049/11-116W	.437	.250	.875-20 UNEF	1.145	4.938	.906	1.188	.120
MS3400DJ 14BXX	MS3400D-14-XX	M85049/11-19W	.750	.500	.875-20 UNEF	1.551	5.750	.906	1.188	.120

\* ADD .375 WHEN CONTACT ARRANGEMENT INCLUDES SIZE 8, 4 AND 0 CONTACTS.

# MS3400DJ

ASSEMBLY NO.	CONNECTOR RECEPTACLE NO.	BACKSHELL ASSEMBLY NO.	A		B THREAD CLASS 2A	E MAX.	L * MAX.	R ±.005	S ±.031	ØT MAX.
			CABLE ENTRY							
			MAX.	MIN.						
MS3400DJ 14DXX	MS3400D -14-XX	M85049/11-17W	.575	.350	.875-20 UNEF	1.332	4.938	.906	1.188	.120
MS3400DJ 14EXX	MS3400D -14-XX	M85049/11-150W	.312	.125	.875-20 UNEF	.957	4.938	.906	1.188	.120
MS3400DJ 15AXX	MS3400D -14S-XX	M85049/11-116W	.437	.250	.875-20 UNEF	1.145	4.938	.906	1.188	.120
MS3400DJ 15BXX	MS3400D -14S-XX	M85049/11-19W	.750	.500	.875-20 UNEF	1.551	5.750	.906	1.188	.120
MS3400DJ 15DXX	MS3400D -14S-XX	M85049/11-17W	.575	.350	.875-20 UNEF	1.332	4.938	.906	1.188	.120
MS3400DJ 15EXX	MS3400D -14S-XX	M85049/11-150W	.312	.125	.875-20 UNEF	.957	4.938	.906	1.188	.120
MS3400DJ 16AXX	MS3400D -16-XX	M85049/11-21W	.700	.500	1.000-20 UNEF	1.551	5.000	.969	1.284	.120
MS3400DJ 16BXX	MS3400D -16-XX	M85049/11-23W	.937	.625	1.000-20 UNEF	1.770	5.812	.969	1.284	.120
MS3400DJ 16DXX	MS3400D -16-XX	M85049/11-112W	.437	.250	1.000-20 UNEF	1.145	4.938	.969	1.284	.120
MS3400DJ 16EXX	MS3400D -16-XX	M85049/11-118W	.625	.350	1.000-20 UNEF	1.332	4.938	.969	1.284	.120
MS3400DJ 17AXX	MS3400D -16S-XX	M85049/11-21W	.700	.500	1.000-20 UNEF	1.551	5.000	.969	1.284	.120
MS3400DJ 17BXX	MS3400D -16S-XX	M85049/11-23W	.937	.625	1.000-20 UNEF	1.770	5.812	.969	1.284	.120
MS3400DJ 17DXX	MS3400D -16S-XX	M85049/11-112W	.437	.250	1.000-20 UNEF	1.145	4.938	.969	1.284	.120
MS3400DJ 17EXX	MS3400D -16S-XX	M85049/11-118W	.625	.350	1.000-20 UNEF	1.332	4.938	.969	1.284	.120
MS3400DJ 18AXX	MS3400D -18-XX	M85049/11-25W	.625	.350	1.125-18 UNEF	1.332	4.938	1.062	1.375	.120
MS3400DJ 18BXX	MS3400D -18-XX	M85049/11-27W	.750	.500	1.125-18 UNEF	1.551	5.000	1.062	1.375	.120
MS3400DJ 18EXX	MS3400D -18-XX	M85049/11-120W	.312	.125	1.125-18 UNEF	.957	4.938	1.062	1.375	.120
MS3400DJ 18FXX	MS3400D -18-XX	M85049/11-122W	.437	.250	1.125-18 UNEF	1.145	4.938	1.062	1.375	.120
MS3400DJ 20AXX	MS3400D -20-XX	M85049/11-31W	.625	.350	1.250-18 UNEF	1.332	5.938	1.156	1.500	.120
MS3400DJ 20BXX	MS3400D -20-XX	M85049/11-33W	.750	.500	1.250-18 UNEF	1.551	6.000	1.156	1.500	.120
MS3400DJ 20EXX	MS3400D -20-XX	M85049/11-37W	1.250	.875	1.250-18 UNEF	2.113	7.062	1.156	1.500	.120
MS3400DJ 20FXX	MS3400D -20-XX	M85049/11-124W	.437	.250	1.250-18 UNEF	1.145	5.938	1.156	1.500	.120
MS3400DJ 20GXX	MS3400D -20-XX	M85049/11-140W	.904	.625	1.250-18 UNEF	1.770	6.062	1.156	1.500	.120
MS3400DJ 22AXX	MS3400D -22-XX	M85049/11-39W	.625	.350	1.375-18 UNEF	1.332	5.938	1.250	1.625	.120
MS3400DJ 22BXX	MS3400D -22-XX	M85049/11-41W	.750	.500	1.375-18 UNEF	1.551	6.000	1.250	1.625	.120
MS3400DJ 22DXX	MS3400D -22-XX	M85049/11-43W	.937	.625	1.375-18 UNEF	1.770	6.062	1.250	1.625	.120
MS3400DJ 22EXX	MS3400D -22-XX	M85049/11-45W	1.250	.875	1.375-18 UNEF	2.113	7.062	1.250	1.625	.120
MS3400DJ 22FXX	MS3400D -22-XX	M85049/11-126W	.312	.125	1.375-18 UNEF	.957	5.938	1.250	1.625	.120
MS3400DJ 22GXX	MS3400D -22-XX	M85049/11-128W	.437	.250	1.375-18 UNEF	1.145	5.938	1.250	1.625	.120
MS3400DJ 22HXX	MS3400D -22-XX	M85049/11-142W	1.029	.875	1.375-18 UNEF	2.113	6.312	1.250	1.625	.120
MS3400DJ 24AXX	MS3400D -24-XX	M85049/11-47W	.750	.500	1.500-18 UNEF	1.551	6.000	1.375	1.750	.147
MS3400DJ 24BXX	MS3400D -24-XX	M85049/11-49W	.812	.625	1.500-18 UNEF	1.770	6.062	1.375	1.750	.147

\* ADD .375 WHEN CONTACT ARRANGEMENT INCLUDES SIZE 8, 4 AND 0 CONTACTS.

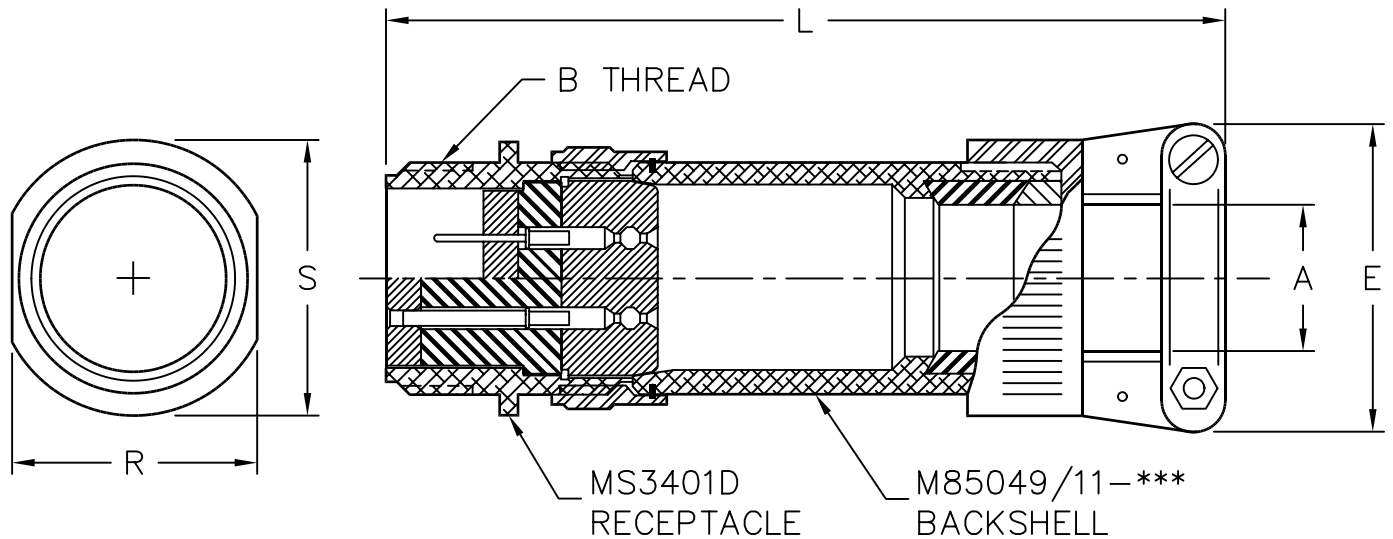
# MS3400DJ

ASSEMBLY NO.	CONNECTOR RECEPTACLE NO.	BACKSHELL ASSEMBLY NO.	A		B THREAD CLASS 2A	E MAX.	L * MAX.	R ±.005	S ±.031	ØT MAX.
			CABLE ENTRY							
			MAX.	MIN.						
MS3400DJ 24DX	MS3400D -24-XX	M85049/11-51W	.937	.625	1.500-18 UNEF	1.770	6.062	1.375	1.750	.147
MS3400DJ 24EX	MS3400D -24-XX	M85049/11-53W	1.250	.875	1.500-18 UNEF	2.113	7.062	1.375	1.750	.147
MS3400DJ 24FX	MS3400D -24-XX	M85049/11-130W	.625	.350	1.500-18 UNEF	1.332	5.938	1.375	1.750	.147
MS3400DJ 24GX	MS3400D -24-XX	M85049/11-144W	1.144	.875	1.500-18 UNEF	2.113	6.312	1.375	1.750	.147
MS3400DJ 28AX	MS3400D -28-XX	M85049/11-55W	.750	.500	1.750-18 UNS	1.551	6.000	1.562	2.000	.147
MS3400DJ 28BX	MS3400D -28-XX	M85049/11-57W	.937	.625	1.750-18 UNS	1.770	6.062	1.562	2.000	.147
MS3400DJ 28DX	MS3400D -28-XX	M85049/11-59W	1.250	.875	1.750-18 UNS	2.113	6.312	1.562	2.000	.147
MS3400DJ 28EX	MS3400D -28-XX	M85049/11-61W	1.375	1.000	1.750-18 UNS	2.363	6.438	1.562	2.000	.147
MS3400DJ 32AX	MS3400D -32-XX	M85049/11-63W	.937	.625	2.000-18 UNS	1.770	6.062	1.750	2.250	.173
MS3400DJ 32BX	MS3400D -32-XX	M85049/11-65W	1.250	.875	2.000-18 UNS	2.113	6.312	1.750	2.250	.173
MS3400DJ 32DX	MS3400D -32-XX	M85049/11-67W	1.375	1.000	2.000-18 UNS	2.363	6.438	1.750	2.250	.173
MS3400DJ 32EX	MS3400D -32-XX	M85049/11-69W	1.625	1.250	2.000-18 UNS	2.770	6.750	1.750	2.250	.173
MS3400DJ 36AX	MS3400D -36-XX	M85049/11-71W	1.250	.875	2.250-16 UN	2.113	7.312	1.938	2.500	.173
MS3400DJ 36BX	MS3400D -36-XX	M85049/11-73W	1.375	1.000	2.250-16 UN	2.363	7.438	1.938	2.500	.173
MS3400DJ 36DX	MS3400D -36-XX	M85049/11-75W	1.625	1.250	2.250-16 UN	2.770	7.688	1.938	2.500	.173
MS3400DJ 36EX	MS3400D -36-XX	M85049/11-146W	1.840	1.437	2.250-16 UN	3.020	7.750	1.938	2.500	.173
MS3400DJ 36FX	MS3400D -36-XX	M85049/11-132W	.750	.500	2.250-16 UN	1.551	7.000	1.938	2.500	.173
MS3400DJ 36GX	MS3400D -36-XX	M85049/11-148W	.937	.625	2.250-16 UN	1.770	7.062	1.938	2.500	.173
MS3400DJ 40AX	MS3400D -40-XX	M85049/11-79W	1.250	.875	2.500-16 UN	2.113	7.312	2.188	2.750	.173
MS3400DJ 40BX	MS3400D -40-XX	M85049/11-81W	1.375	1.000	2.500-16 UN	2.363	7.438	2.188	2.750	.173
MS3400DJ 40DX	MS3400D -40-XX	M85049/11-83W	1.625	1.250	2.500-16 UN	2.770	7.688	2.188	2.750	.173
MS3400DJ 40EX	MS3400D -40-XX	M85049/11-85W	1.840	1.437	2.500-16 UN	3.020	7.750	2.188	2.750	.173
MS3400DJ 40FX	MS3400D -40-XX	M85049/11-134W	.750	.500	2.500-16 UN	1.551	7.000	2.188	2.750	.173
MS3400DJ 44AX	MS3400D -44-XX	M85049/11-87W	1.250	.875	2.750-16 UN	2.113	7.312	2.375	3.000	.173
MS3400DJ 44BX	MS3400D -44-XX	M85049/11-89W	1.375	1.000	2.750-16 UN	2.363	7.438	2.375	3.000	.173
MS3400DJ 44DX	MS3400D -44-XX	M85049/11-91W	1.625	1.250	2.750-16 UN	2.770	7.688	2.375	3.000	.173
MS3400DJ 44EX	MS3400D -44-XX	M85049/11-93W	1.840	1.437	2.750-16 UN	3.020	7.750	2.375	3.000	.173
MS3400DJ 44FX	MS3400D -44-XX	M85049/11-154W	.937	.625	2.750-16 UN	1.770	7.062	2.375	3.000	.173
MS3400DJ 48AX	MS3400D -48-XX	M85049/11-95W	1.250	.875	3.000-16 UN	2.113	7.312	2.625	3.250	.173
MS3400DJ 48BX	MS3400D -48-XX	M85049/11-97W	1.375	1.000	3.000-16 UN	2.363	7.438	2.625	3.250	.173
MS3400DJ 48DX	MS3400D -48-XX	M85049/11-99W	1.625	1.250	3.000-16 UN	2.770	7.688	2.625	3.250	.173
MS3400DJ 48EX	MS3400D -48-XX	M85049/11-101W	1.840	1.437	3.000-16 UN	3.020	7.750	2.625	3.250	.173

\* ADD .375 WHEN CONTACT ARRANGEMENT INCLUDES SIZE 8, 4 AND 0 CONTACTS.

# MS3401DJ

## CABLE CONNECTOR RECEPTACLE STRAIGHT BACKSHELL ASSEMBLY



ASSEMBLY NO.	CONNECTOR RECEPTACLE NO.	BACKSHELL ASSEMBLY NO.	A CABLE ENTRY		B THREAD CLASS 2A	E MAX.	L* MAX.	R ±.005	S ±.031
			MAX.	MIN.					
MS3401DJ 10AXX	MS3401D-10S-XX	M85049/11-09W	.312	.125	.625-24 UNEF	.957	4.938	.625	.854
MS3401DJ 10BXX	MS3401D-10S-XX	M85049/11-11W	.437	.250	.625-24 UNEF	1.145	5.688	.625	.854
MS3401DJ 10DXX	MS3401D-10S-XX	M85049/11-136W	.375	.250	.625-24 UNEF	1.145	4.938	.625	.854
MS3401DJ 11AXX	MS3401D-10SL-XX	M85049/11-09W	.312	.125	.625-24 UNEF	.957	4.938	.625	.854
MS3401DJ 11BXX	MS3401D-10SL-XX	M85049/11-11W	.437	.250	.625-24 UNEF	1.145	5.688	.625	.854
MS3401DJ 11DXX	MS3401D-10SL-XX	M85049/11-136W	.375	.250	.625-24 UNEF	1.145	4.938	.625	.854
MS3401DJ 12AXX	MS3401D-12-XX	M85049/11-114W	.312	.125	.750-20 UNEF	.957	4.938	.750	.974
MS3401DJ 12BXX	MS3401D-12-XX	M85049/11-15W	.625	.350	.750-20 UNEF	1.332	5.688	.750	.974
MS3401DJ 12DXX	MS3401D-12-XX	M85049/11-138W	.500	.350	.750-20 UNEF	1.332	4.938	.750	.974
MS3401DJ 12EXX	MS3401D-12-XX	M85049/11-13W	.437	.250	.750-20 UNEF	1.145	4.938	.750	.974
MS3401DJ 13AXX	MS3401D-12S-XX	M85049/11-114W	.312	.125	.750-20 UNEF	.957	4.938	.750	.974
MS3401DJ 13BXX	MS3401D-12S-XX	M85049/11-15W	.625	.350	.750-20 UNEF	1.332	5.688	.750	.974
MS3401DJ 13DXX	MS3401D-12S-XX	M85049/11-138W	.500	.350	.750-20 UNEF	1.332	4.938	.750	.974
MS3401DJ 13EXX	MS3401D-12S-XX	M85049/11-13W	.437	.250	.750-20 UNEF	1.145	4.938	.750	.974
MS3401DJ 14AXX	MS3401D-14-XX	M85049/11-116W	.437	.250	.875-20 UNEF	1.145	4.938	.875	1.099
MS3401DJ 14BXX	MS3401D-14-XX	M85049/11-19W	.750	.500	.875-20 UNEF	1.551	5.750	.875	1.099

\* ADD .375 WHEN CONTACT ARRANGEMENT INCLUDES SIZE 8, 4 AND 0 CONTACTS.

# MS3401DJ

ASSEMBLY NO.	CONNECTOR RECEPTACLE NO.	BACKSHELL ASSEMBLY NO.	A		B THREAD CLASS 2A	E MAX.	L* MAX.	R ±.005	S ±.031
			CABLE ENTRY						
			MAX.	MIN.					
MS3401DJ 14DXX	MS3401D -14-XX	M85049/11-17W	.575	.350	.875-20 UNEF	1.332	4.938	.875	1.099
MS3401DJ 14EXX	MS3401D -14-XX	M85049/11-150W	.312	.125	.875-20 UNEF	.957	4.938	.875	1.099
MS3401DJ 15AXX	MS3401D -14S-XX	M85049/11-116W	.437	.250	.875-20 UNEF	1.145	4.938	.875	1.099
MS3401DJ 15BXX	MS3401D -14S-XX	M85049/11-19W	.750	.500	.875-20 UNEF	1.551	5.750	.875	1.099
MS3401DJ 15DXX	MS3401D -14S-XX	M85049/11-17W	.575	.350	.875-20 UNEF	1.332	4.938	.875	1.099
MS3401DJ 15EXX	MS3401D -14S-XX	M85049/11-17W	.312	.125	.875-20 UNEF	.957	4.938	.875	1.099
MS3401DJ 16AXX	MS3401D -16-XX	M85049/11-21W	.700	.500	1.000-20 UNEF	1.551	5.000	1.000	1.224
MS3401DJ 16BXX	MS3401D -16-XX	M85049/11-23W	.937	.625	1.000-20 UNEF	1.770	5.812	1.000	1.224
MS3401DJ 16DXX	MS3401D -16-XX	M85049/11-112W	.437	.250	1.000-20 UNEF	1.145	4.938	1.000	1.224
MS3401DJ 16EXX	MS3401D -16-XX	M85049/11-118W	.625	.350	1.000-20 UNEF	1.332	4.938	1.000	1.224
MS3401DJ 17AXX	MS3401D -16S-XX	M85049/11-21W	.700	.500	1.000-20 UNEF	1.551	5.000	1.000	1.224
MS3401DJ 17BXX	MS3401D -16S-XX	M85049/11-23W	.937	.625	1.000-20 UNEF	1.770	5.812	1.000	1.224
MS3401DJ 17DXX	MS3401D -16S-XX	M85049/11-112W	.437	.250	1.000-20 UNEF	1.145	4.938	1.000	1.224
MS3401DJ 17EXX	MS3401D -16S-XX	M85049/11-118W	.625	.350	1.000-20 UNEF	1.332	4.938	1.000	1.224
MS3401DJ 18AXX	MS3401D -18-XX	M85049/11-25W	.625	.350	1.125-18 UNEF	1.332	4.938	1.125	1.349
MS3401DJ 18BXX	MS3401D -18-XX	M85049/11-27W	.750	.500	1.125-18 UNEF	1.551	5.000	1.125	1.349
MS3401DJ 18EXX	MS3401D -18-XX	M85049/11-120W	.312	.125	1.125-18 UNEF	.957	4.938	1.125	1.349
MS3401DJ 18FXX	MS3401D -18-XX	M85049/11-122W	.437	.250	1.125-18 UNEF	1.145	4.938	1.125	1.349
MS3401DJ 20AXX	MS3401D -20-XX	M85049/11-31W	.625	.350	1.250-18 UNEF	1.332	5.938	1.250	1.474
MS3401DJ 20BXX	MS3401D -20-XX	M85049/11-33W	.750	.500	1.250-18 UNEF	1.551	6.000	1.250	1.474
MS3401DJ 20EXX	MS3401D -20-XX	M85049/11-37W	1.250	.875	1.250-18 UNEF	2.113	7.062	1.250	1.474
MS3401DJ 20FXX	MS3401D -20-XX	M85049/11-124W	.437	.250	1.250-18 UNEF	1.145	5.938	1.250	1.474
MS3401DJ 20GXX	MS3401D -20-XX	M85049/11-140W	.904	.625	1.250-18 UNEF	1.770	6.062	1.250	1.474
MS3401DJ 22AXX	MS3401D -22-XX	M85049/11-39W	.625	.350	1.375-18 UNEF	1.332	5.938	1.375	1.599
MS3401DJ 22BXX	MS3401D -22-XX	M85049/11-41W	.750	.500	1.375-18 UNEF	1.551	6.000	1.375	1.599
MS3401DJ 22DXX	MS3401D -22-XX	M85049/11-43W	.937	.625	1.375-18 UNEF	1.770	6.062	1.375	1.599
MS3401DJ 22EXX	MS3401D -22-XX	M85049/11-45W	1.250	.875	1.375-18 UNEF	2.113	7.062	1.375	1.599
MS3401DJ 22FXX	MS3401D -22-XX	M85049/11-126W	.312	.125	1.375-18 UNEF	.957	5.938	1.375	1.599
MS3401DJ 22GXX	MS3401D -22-XX	M85049/11-128W	.437	.250	1.375-18 UNEF	1.145	5.938	1.375	1.599
MS3401DJ 22HXX	MS3401D -22-XX	M85049/11-142W	1.029	.875	1.375-18 UNEF	2.113	6.312	1.375	1.599
MS3401DJ 24AXX	MS3401D -24-XX	M85049/11-47W	.750	.500	1.500-18 UNEF	1.551	6.000	1.500	1.715
MS3401DJ 24BXX	MS3401D -24-XX	M85049/11-49W	.812	.625	1.500-18 UNEF	1.770	6.062	1.500	1.715

\* ADD .375 WHEN CONTACT ARRANGEMENT INCLUDES SIZE 8, 4 AND 0 CONTACTS.

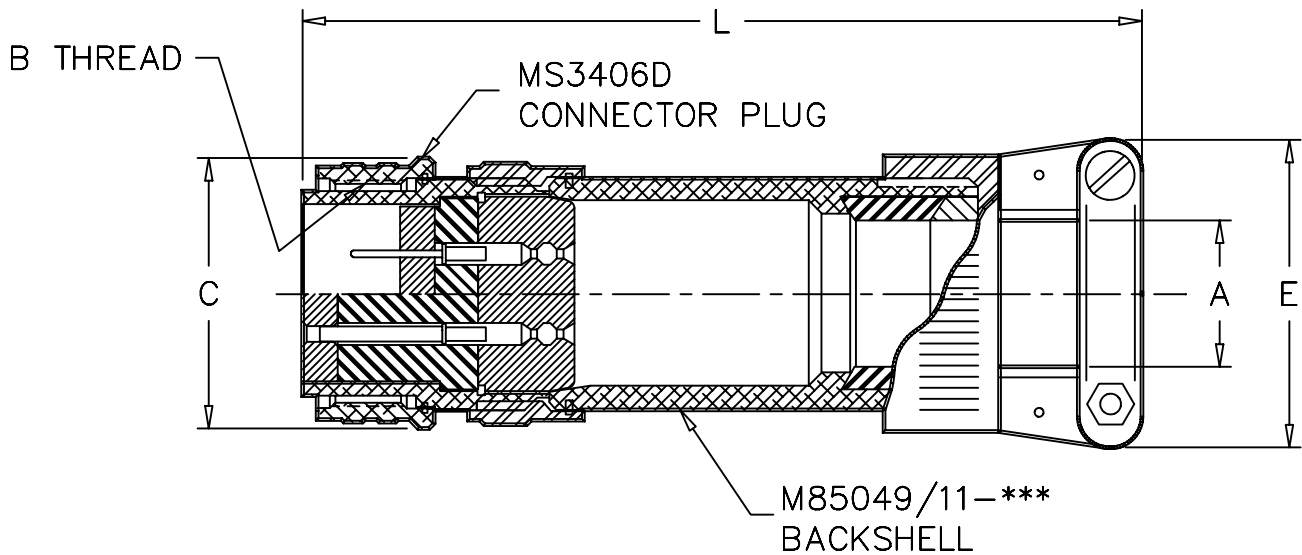
# MS3401DJ

ASSEMBLY NO.	CONNECTOR RECEPTACLE NO.	BACKSHELL ASSEMBLY NO.	A		B THREAD CLASS 2A	E MAX.	L* MAX.	R ±.005	S ±.031
			CABLE ENTRY						
			MAX.	MIN.					
MS3401DJ 24DXX	MS3401D -24-XX	M85049/11-51W	.937	.625	1.500-18 UNEF	1.770	6.062	1.500	1.715
MS3401DJ 24EXX	MS3401D -24-XX	M85049/11-53W	1.250	.875	1.500-18 UNEF	2.113	7.062	1.500	1.715
MS3401DJ 24FXX	MS3401D -24-XX	M85049/11-130W	.625	.350	1.500-18 UNEF	1.332	5.938	1.500	1.715
MS3401DJ 24GXX	MS3401D -24-XX	M85049/11-144W	1.144	.875	1.500-18 UNEF	2.113	6.312	1.500	1.715
MS3401DJ 28AXX	MS3401D -28-XX	M85049/11-55W	.750	.500	1.750-18 UNS	1.551	6.000	1.750	1.974
MS3401DJ 28BXX	MS3401D -28-XX	M85049/11-57W	.937	.625	1.750-18 UNS	1.770	6.062	1.750	1.974
MS3401DJ 28DXX	MS3401D -28-XX	M85049/11-59W	1.250	.875	1.750-18 UNS	2.113	6.312	1.750	1.974
MS3401DJ 28EXX	MS3401D -28-XX	M85049/11-61W	1.375	1.000	1.750-18 UNS	2.363	6.438	1.750	1.974
MS3401DJ 32AXX	MS3401D -32-XX	M85049/11-63W	.937	.625	2.000-18 UNS	1.770	6.062	2.000	2.224
MS3401DJ 32BXX	MS3401D -32-XX	M85049/11-65W	1.250	.875	2.000-18 UNS	2.113	6.312	2.000	2.224
MS3401DJ 32DXX	MS3401D -32-XX	M85049/11-67W	1.375	1.000	2.000-18 UNS	2.363	6.438	2.000	2.224
MS3401DJ 32EXX	MS3401D -32-XX	M85049/11-69W	1.625	1.250	2.000-18 UNS	2.770	6.750	2.000	2.224
MS3401DJ 36AXX	MS3401D -36-XX	M85049/11-71W	1.250	.875	2.250-16 UN	2.113	7.312	2.250	2.474
MS3401DJ 36BXX	MS3401D -36-XX	M85049/11-73W	1.375	1.000	2.250-16 UN	2.363	7.438	2.250	2.474
MS3401DJ 36DXX	MS3401D -36-XX	M85049/11-75W	1.625	1.250	2.250-16 UN	2.770	7.688	2.250	2.474
MS3401DJ 36EXX	MS3401D -36-XX	M85049/11-146W	1.840	1.437	2.250-16 UN	3.020	7.750	2.250	2.474
MS3401DJ 36FXX	MS3401D -36-XX	M85049/11-132W	.750	.500	2.250-16 UN	1.551	7.000	2.250	2.474
MS3401DJ 36GXX	MS3401D -36-XX	M85049/11-148W	.937	.625	2.250-16 UN	1.770	7.062	2.250	2.474
MS3401DJ 40AXX	MS3401D -40-XX	M85049/11-79W	1.250	.875	2.500-16 UN	2.113	7.312	2.505	2.724
MS3401DJ 40BXX	MS3401D -40-XX	M85049/11-81W	1.375	1.000	2.500-16 UN	2.363	7.438	2.505	2.724
MS3401DJ 40DXX	MS3401D -40-XX	M85049/11-83W	1.625	1.250	2.500-16 UN	2.770	7.688	2.505	2.724
MS3401DJ 40EXX	MS3401D -40-XX	M85049/11-85W	1.840	1.437	2.500-16 UN	3.020	7.750	2.505	2.724
MS3401DJ 40FXX	MS3401D -40-XX	M85049/11-134W	.750	.500	2.500-16 UN	1.551	7.000	2.505	2.724
MS3401DJ 44AXX	MS3401D -44-XX	M85049/11-87W	1.250	.875	2.750-16 UN	2.113	7.312	2.755	2.974
MS3401DJ 44BXX	MS3401D -44-XX	M85049/11-89W	1.375	1.000	2.750-16 UN	2.363	7.438	2.755	2.974
MS3401DJ 44DXX	MS3401D -44-XX	M85049/11-91W	1.625	1.250	2.750-16 UN	2.770	7.688	2.755	2.974
MS3401DJ 44EXX	MS3401D -44-XX	M85049/11-93W	1.840	1.437	2.750-16 UN	3.020	7.750	2.755	2.974
MS3401DJ 44FXX	MS3401D -44-XX	M85049/11-154W	.937	.625	2.750-16 UN	1.770	7.062	2.755	2.974
MS3401DJ 48AXX	MS3401D -48-XX	M85049/11-95W	1.250	.875	3.000-16 UN	2.113	7.312	3.005	3.224
MS3401DJ 48BXX	MS3401D -48-XX	M85049/11-97W	1.375	1.000	3.000-16 UN	2.363	7.438	3.005	3.224
MS3401DJ 48DXX	MS3401D -48-XX	M85049/11-99W	1.625	1.250	3.000-16 UN	2.770	7.688	3.005	3.224
MS3401DJ 48EXX	MS3401D -48-XX	M85049/11-101W	1.840	1.437	3.000-16 UN	3.020	7.750	3.005	3.224

\* ADD .375 WHEN CONTACT ARRANGEMENT INCLUDES SIZE 8, 4, AND 0 CONTACTS.

# MS3406DJ

## PLUG STRAIGHT BACKSHELL ASSEMBLY



ASSEMBLY NO.	CONNECTOR RECEPTACLE NO.	BACKSHELL ASSEMBLY NO.	A CABLE ENTRY		B THREAD CLASS 2B	C MAX.	E MAX.	L * MAX.
			MAX.	MIN.				
MS3406DJ 10AXX	MS3406D-10S-XX	M85049/11-09W	.312	.125	.625-24 UNEF	.969	.957	4.938
MS3406DJ 10BXX	MS3406D-10S-XX	M85049/11-11W	.437	.250	.625-24 UNEF	.969	1.145	5.688
MS3406DJ 10DXX	MS3406D-10S-XX	M85049/11-136W	.375	.250	.625-24 UNEF	.969	1.145	4.938
MS3406DJ 11AXX	MS3406D-10SL-XX	M85049/11-09W	.312	.125	.625-24 UNEF	.969	.957	4.938
MS3406DJ 11BXX	MS3406D-10SL-XX	M85049/11-11W	.437	.250	.625-24 UNEF	.969	1.145	5.688
MS3406DJ 11DXX	MS3406D-10SL-XX	M85049/11-136W	.375	.250	.625-24 UNEF	.969	1.145	4.938
MS3406DJ 12AXX	MS3406D-12-XX	M85049/11-114W	.312	.125	.750-20 UNEF	1.062	.957	4.938
MS3406DJ 12BXX	MS3406D-12-XX	M85049/11-15W	.625	.350	.750-20 UNEF	1.062	1.332	5.688
MS3406DJ 12DXX	MS3406D-12-XX	M85049/11-138W	.500	.350	.750-20 UNEF	1.062	1.332	4.938
MS3406DJ 12EXX	MS3406D-12-XX	M85049/11-13W	.437	.250	.750-20 UNEF	1.062	1.145	4.938
MS3406DJ 13AXX	MS3406D-12S-XX	M85049/11-114W	.312	.125	.750-20 UNEF	1.062	.957	4.938
MS3406DJ 13BXX	MS3406D-12S-XX	M85049/11-15W	.625	.350	.750-20 UNEF	1.062	1.332	5.688
MS3406DJ 13DXX	MS3406D-12S-XX	M85049/11-138W	.500	.350	.750-20 UNEF	1.062	1.332	4.938
MS3406DJ 13EXX	MS3406D-12S-XX	M85049/11-13W	.437	.250	.750-20 UNEF	1.062	1.145	4.938
MS3406DJ 14AXX	MS3406D-14-XX	M85049/11-116W	.437	.250	.875-20 UNEF	1.156	1.145	4.938
MS3406DJ 14BXX	MS3406D-14-XX	M85049/11-19W	.750	.500	.875-20 UNEF	1.156	1.551	5.750

\* ADD .375 WHEN CONTACT ARRANGEMENT INCLUDES SIZE 8, 4 AND 0 CONTACTS.

# MS3406DJ

ASSEMBLY NO.	CONNECTOR RECEPTACLE NO.	BACKSHELL ASSEMBLY NO.	A CABLE ENTRY		B THREAD CLASS 2B	C MAX.	E MAX.	L * MAX.
			MAX.	MIN.				
MS3406DJ 14DXX	MS3406D -14-XX	M85049/11-17W	.575	.350	.875-20 UNEF	1.156	1.332	4.938
MS3406DJ 14EXX	MS3406D -14-XX	M85049/11-150W	.312	.125	.875-20 UNEF	1.156	.957	4.938
MS3406DJ 15AXX	MS3406D -14S-XX	M85049/11-116W	.437	.250	.875-20 UNEF	1.156	1.145	4.938
MS3406DJ 15BXX	MS3406D -14S-XX	M85049/11-19W	.750	.500	.875-20 UNEF	1.156	1.551	5.750
MS3406DJ 15DXX	MS3406D -14S-XX	M85049/11-17W	.575	.350	.875-20 UNEF	1.156	1.332	4.938
MS3406DJ 15EXX	MS3406D -14S-XX	M85049/11-150W	.312	.125	.875-20 UNEF	1.156	.957	4.938
MS3406DJ 16AXX	MS3406D -16-XX	M85049/11-21W	.700	.500	1.000-20 UNEF	1.250	1.551	5.000
MS3406DJ 16BXX	MS3406D -16-XX	M85049/11-23W	.937	.625	1.000-20 UNEF	1.250	1.770	5.812
MS3406DJ 16DXX	MS3406D -16-XX	M85049/11-112W	.437	.250	1.000-20 UNEF	1.250	1.145	4.938
MS3406DJ 16EXX	MS3406D -16-XX	M85049/11-118W	.625	.350	1.000-20 UNEF	1.250	1.332	4.938
MS3406DJ 17AXX	MS3406D -16S-XX	M85049/11-21W	.700	.500	1.000-20 UNEF	1.250	1.551	5.000
MS3406DJ 17BXX	MS3406D -16S-XX	M85049/11-23W	.937	.625	1.000-20 UNEF	1.250	1.770	5.812
MS3406DJ 17DXX	MS3406D -16S-XX	M85049/11-112W	.437	.250	1.000-20 UNEF	1.250	1.145	4.938
MS3406DJ 17EXX	MS3406D -16S-XX	M85049/11-118W	.625	.350	1.000-20 UNEF	1.250	1.332	4.938
MS3406DJ 18AXX	MS3406D -18-XX	M85049/11-25W	.625	.350	1.125-18 UNEF	1.344	1.332	4.938
MS3406DJ 18BXX	MS3406D -18-XX	M85049/11-27W	.750	.500	1.125-18 UNEF	1.344	1.551	5.000
MS3406DJ 18EXX	MS3406D -18-XX	M85049/11-120W	.312	.125	1.125-18 UNEF	1.344	.957	4.938
MS3406DJ 18FXX	MS3406D -18-XX	M85049/11-122W	.437	.250	1.125-18 UNEF	1.344	1.145	4.938
MS3406DJ 20AXX	MS3406D -20-XX	M85049/11-31W	.625	.350	1.250-18 UNEF	1.469	1.332	5.938
MS3406DJ 20BXX	MS3406D -20-XX	M85049/11-33W	.750	.500	1.250-18 UNEF	1.469	1.551	6.000
MS3406DJ 20EXX	MS3406D -20-XX	M85049/11-37W	1.250	.875	1.250-18 UNEF	1.469	2.113	7.062
MS3406DJ 20FXX	MS3406D -20-XX	M85049/11-124W	.437	.250	1.250-18 UNEF	1.469	1.145	5.938
MS3406DJ 20GXX	MS3406D -20-XX	M85049/11-140W	.904	.625	1.250-18 UNEF	1.469	1.770	6.062
MS3406DJ 22AXX	MS3406D -22-XX	M85049/11-39W	.625	.350	1.375-18 UNEF	1.594	1.332	5.938
MS3406DJ 22BXX	MS3406D -22-XX	M85049/11-41W	.750	.500	1.375-18 UNEF	1.594	1.551	6.000
MS3406DJ 22DXX	MS3406D -22-XX	M85049/11-43W	.937	.625	1.375-18 UNEF	1.594	1.770	6.062
MS3406DJ 22EXX	MS3406D -22-XX	M85049/11-45W	1.250	.875	1.375-18 UNEF	1.594	2.113	7.062
MS3406DJ 22FXX	MS3406D -22-XX	M85049/11-126W	.312	.125	1.375-18 UNEF	1.594	.957	5.938
MS3406DJ 22GXX	MS3406D -22-XX	M85049/11-128W	.437	.250	1.375-18 UNEF	1.594	1.145	5.938
MS3406DJ 22HXX	MS3406D -22-XX	M85049/11-142W	1.029	.875	1.375-18 UNEF	1.594	2.113	6.312
MS3406DJ 24AXX	MS3406D -24-XX	M85049/11-47W	.750	.500	1.500-18 UNEF	1.719	1.551	6.000
MS3406DJ 24BXX	MS3406D -24-XX	M85049/11-49W	.812	.625	1.500-18 UNEF	1.719	1.770	6.062

\* ADD .375 WHEN CONTACT ARRANGEMENT INCLUDES SIZE 8, 4 AND 0 CONTACTS.



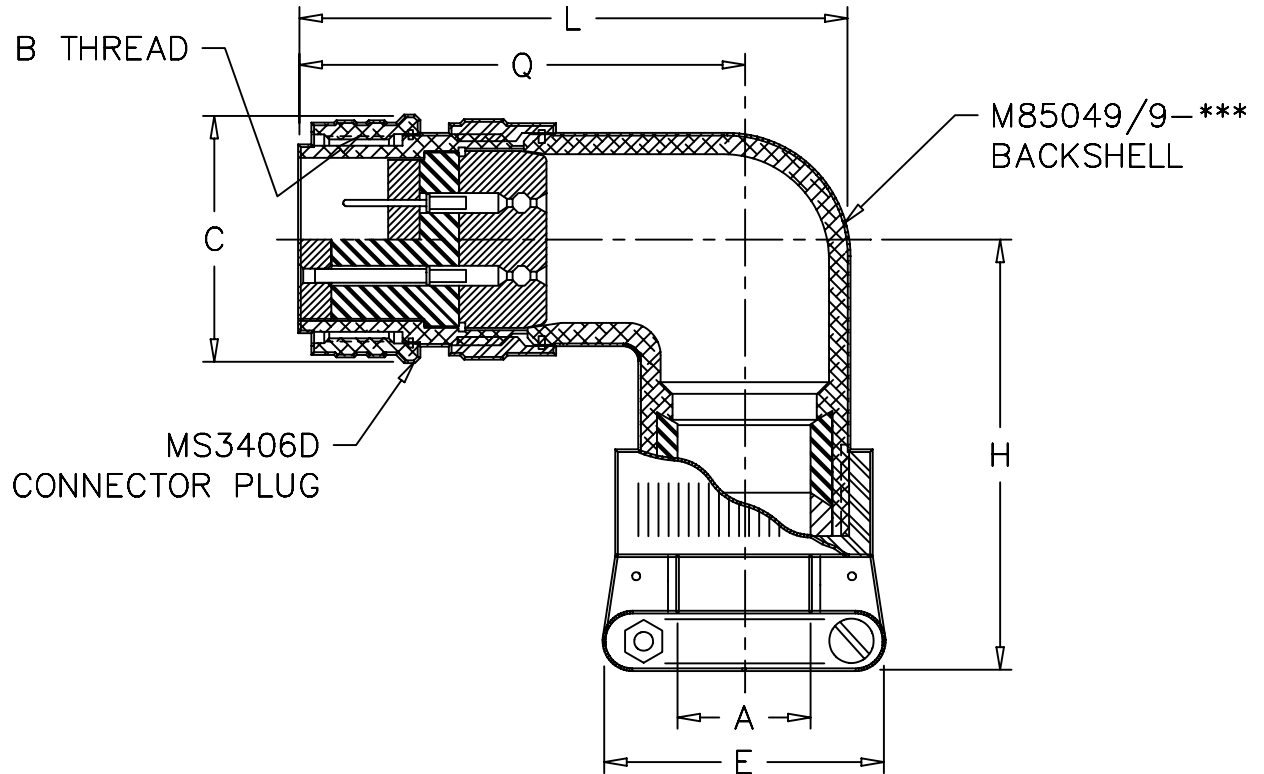
# MS3406DJ

ASSEMBLY NO.	CONNECTOR RECEPTACLE NO.	BACKSHELL ASSEMBLY NO.	A CABLE ENTRY		B THREAD CLASS 2B	C MAX.	E MAX.	L * MAX.
			MAX.	MIN.				
MS3406DJ 24DXX	MS3406D -24-XX	M85049/11-51W	.937	.625	1.500-18 UNEF	1.719	1.770	6.062
MS3406DJ 24EXX	MS3406D -24-XX	M85049/11-53W	1.250	.875	1.500-18 UNEF	1.719	2.113	7.062
MS3406DJ 24FXX	MS3406D -24-XX	M85049/11-130W	.625	.350	1.500-18 UNEF	1.719	1.332	5.938
MS3406DJ 24GXX	MS3406D -24-XX	M85049/11-144W	1.144	.875	1.500-18 UNEF	1.719	2.113	6.312
MS3406DJ 28AXX	MS3406D -28-XX	M85049/11-55W	.750	.500	1.750-18 UNS	1.969	1.551	6.000
MS3406DJ 28BXX	MS3406D -28-XX	M85049/11-57W	.937	.625	1.750-18 UNS	1.969	1.770	6.062
MS3406DJ 28DXX	MS3406D -28-XX	M85049/11-59W	1.250	.875	1.750-18 UNS	1.969	2.113	6.312
MS3406DJ 28EXX	MS3406D -28-XX	M85049/11-61W	1.375	1.000	1.750-18 UNS	1.969	2.363	6.438
MS3406DJ 32AXX	MS3406D -32-XX	M85049/11-63W	.937	.625	2.000-18 UNS	2.219	1.770	6.062
MS3406DJ 32BXX	MS3406D -32-XX	M85049/11-65W	1.250	.875	2.000-18 UNS	2.219	2.113	6.312
MS3406DJ 32DXX	MS3406D -32-XX	M85049/11-67W	1.375	1.000	2.000-18 UNS	2.219	2.363	6.438
MS3406DJ 32EXX	MS3406D -32-XX	M85049/11-69W	1.625	1.250	2.000-18 UNS	2.219	2.770	6.750
MS3406DJ 36AXX	MS3406D -36-XX	M85049/11-71W	1.250	.875	2.250-16 UN	2.469	2.113	7.312
MS3406DJ 36BXX	MS3406D -36-XX	M85049/11-73W	1.375	1.000	2.250-16 UN	2.469	2.363	7.438
MS3406DJ 36DXX	MS3406D -36-XX	M85049/11-75W	1.625	1.250	2.250-16 UN	2.469	2.770	7.688
MS3406DJ 36EXX	MS3406D -36-XX	M85049/11-146W	1.840	1.437	2.250-16 UN	2.469	3.020	7.750
MS3406DJ 36FXX	MS3406D -36-XX	M85049/11-132W	.750	.500	2.250-16 UN	2.469	1.551	7.000
MS3406DJ 36GXX	MS3406D -36-XX	M85049/11-148W	.937	.625	2.250-16 UN	2.469	1.770	7.062
MS3406DJ 40AXX	MS3406D -40-XX	M85049/11-79W	1.250	.875	2.500-16 UN	2.719	2.113	7.312
MS3406DJ 40BXX	MS3406D -40-XX	M85049/11-81W	1.375	1.000	2.500-16 UN	2.719	2.363	7.438
MS3406DJ 40DXX	MS3406D -40-XX	M85049/11-83W	1.625	1.250	2.500-16 UN	2.719	2.770	7.688
MS3406DJ 40EXX	MS3406D -40-XX	M85049/11-85W	1.840	1.437	2.500-16 UN	2.719	3.020	7.750
MS3406DJ 40FXX	MS3406D -40-XX	M85049/11-134W	.750	.500	2.500-16 UN	2.719	1.551	7.000
MS3406DJ 44AXX	MS3406D -44-XX	M85049/11-87W	1.250	.875	2.750-16 UN	2.969	2.113	7.312
MS3406DJ 44BXX	MS3406D -44-XX	M85049/11-89W	1.375	1.000	2.750-16 UN	2.969	2.363	7.438
MS3406DJ 44DXX	MS3406D -44-XX	M85049/11-91W	1.625	1.250	2.750-16 UN	2.969	2.770	7.688
MS3406DJ 44EXX	MS3406D -44-XX	M85049/11-93W	1.840	1.437	2.750-16 UN	2.969	3.020	7.750
MS3406DJ 44FXX	MS3406D -44-XX	M85049/11-154W	.937	.625	2.750-16 UN	2.969	1.770	7.062
MS3406DJ 48AXX	MS3406D -48-XX	M85049/11-95W	1.250	.875	3.000-16 UN	3.219	2.113	7.312
MS3406DJ 48BXX	MS3406D -48-XX	M85049/11-97W	1.375	1.000	3.000-16 UN	3.219	2.363	7.438
MS3406DJ 48DXX	MS3406D -48-XX	M85049/11-99W	1.625	1.250	3.000-16 UN	3.219	2.770	7.688
MS3406DJ 48EXX	MS3406D -48-XX	M85049/11-101W	1.840	1.437	3.000-16 UN	3.219	3.020	7.750

\* ADD .375 WHEN CONTACT ARRANGEMENT INCLUDES SIZE 8, 4 AND 0 CONTACTS.

# MS3408DJ

## 90 PLUG BACKSHELL ASSEMBLY



ASSEMBLY NO.	CONNECTOR RECEPTACLE NO.	BACKSHELL ASSEMBLY NO.	A CABLE ENTRY		B THREAD CLASS 2B	C MAX.	E MAX.	H MAX.	L* MAX.	Q MAX.
			MAX.	MIN.						
MS3408DJ 10AXX	MS3406D-10S-XX	M85049/9-04W	.312	.125	.625-24 UNEF	.969	.957	3.125	3.000	2.500
MS3408DJ 10BXX	MS3406D-10S-XX	M85049/9-49W	.437	.250	.625-24 UNEF	.969	1.145	3.125	3.812	3.250
MS3408DJ 10DXX	MS3406D-10S-XX	M85049/9-05W	.375	.250	.625-24 UNEF	.969	1.145	2.500	3.062	2.500
MS3408DJ 11AXX	MS3406D-10SL-XX	M85049/9-04W	.312	.125	.625-24 UNEF	.969	.957	3.125	3.000	2.500
MS3408DJ 11BXX	MS3406D-10SL-XX	M85049/9-49W	.437	.250	.625-24 UNEF	.969	1.145	3.125	3.812	3.250
MS3408DJ 11DXX	MS3406D-10SL-XX	M85049/9-05W	.375	.250	.625-24 UNEF	.969	1.145	2.500	3.062	2.500
MS3408DJ 12AXX	MS3406D-12-XX	M85049/9-06W	.312	.125	.750-20 UNEF	1.062	.957	3.125	3.000	2.500
MS3408DJ 12BXX	MS3406D-12-XX	M85049/9-71W	.625	.350	.750-20 UNEF	1.062	1.332	3.312	4.188	3.562
MS3408DJ 12DXX	MS3406D-12-XX	M85049/9-08W	.500	.350	.750-20 UNEF	1.062	1.332	2.500	3.188	2.500
MS3408DJ 12EXX	MS3406D-12-XX	M85049/9-07W	.437	.250	.750-20 UNEF	1.062	1.145	3.125	3.062	2.500
MS3408DJ 13AXX	MS3406D-12S-XX	M85049/9-06W	.312	.125	.750-20 UNEF	1.062	.957	3.125	3.000	2.500
MS3408DJ 13BXX	MS3406D-12S-XX	M85049/9-71W	.625	.350	.750-20 UNEF	1.062	1.332	3.312	4.188	3.562

\* ADD .375 WHEN CONTACT ARRANGEMENT INCLUDES SIZE 8, 4 AND 0 CONTACTS.

# MS3408DJ

ASSEMBLY NO.	CONNECTOR RECEPTACLE NO.	BACKSHELL ASSEMBLY NO.	A CABLE ENTRY		B THREAD CLASS 2B	C MAX.	E MAX.	H MAX.	L* MAX.	Q MAX.
			MAX.	MIN.						
MS3408DJ 13DXX	MS3406D-12S-XX	M85049/9-08W	.500	.350	.750-20 UNEF	1.062	1.332	2.500	3.188	2.500
MS3408DJ 13EXX	MS3406D-12S-XX	M85049/9-07W	.437	.250	.750-20 UNEF	1.062	1.145	3.125	3.062	2.500
MS3408DJ 14AXX	MS3406D-14-XX	M85049/9-09W	.437	.250	.875-20 UNEF	1.156	1.145	3.188	3.188	2.688
MS3408DJ 14BXX	MS3406D-14-XX	M85049/9-50W	.750	.500	.875-20 UNEF	1.156	1.551	3.500	4.375	3.625
MS3408DJ 14DXX	MS3406D-14-XX	M85049/9-10W	.575	.350	.875-20 UNEF	1.156	1.332	2.812	3.250	2.688
MS3408DJ 14EXX	MS3406D-14-XX	M85049/9-74W	.312	.125	.875-20 UNEF	1.156	.957	3.188	3.125	2.625
MS3408DJ 15AXX	MS3406D-14S-XX	M85049/9-09W	.437	.250	.875-20 UNEF	1.156	1.145	3.188	3.188	2.688
MS3408DJ 15BXX	MS3406D-14S-XX	M85049/9-50W	.750	.500	.875-20 UNEF	1.156	1.551	3.500	4.375	3.625
MS3408DJ 15DXX	MS3406D-14S-XX	M85049/9-10W	.575	.350	.875-20 UNEF	1.156	1.332	2.812	3.250	2.688
MS3408DJ 15EXX	MS3406D-14S-XX	M85049/9-74W	.312	.125	.875-20 UNEF	1.156	.957	3.188	3.125	2.625
MS3408DJ 16AXX	MS3406D-16-XX	M85049/9-12W	.700	.500	1.000-20 UNEF	1.250	1.551	2.938	3.562	2.812
MS3408DJ 16BXX	MS3406D-16-XX	M85049/9-51W	.937	.625	1.000-20 UNEF	1.250	1.770	3.688	4.688	3.750
MS3408DJ 16DXX	MS3406D-16-XX	M85049/9-11W	.437	.250	1.000-20 UNEF	1.250	1.145	3.312	3.375	2.812
MS3408DJ 16EXX	MS3406D-16-XX	M85049/9-40W	.625	.350	1.000-20 UNEF	1.250	1.332	3.312	3.438	2.812
MS3408DJ 17AXX	MS3406D-16S-XX	M85049/9-12W	.700	.500	1.000-20 UNEF	1.250	1.551	2.938	3.562	2.812
MS3408DJ 17BXX	MS3406D-16S-XX	M85049/9-51W	.937	.625	1.000-20 UNEF	1.250	1.770	3.688	4.688	3.750
MS3408DJ 17DXX	MS3406D-16S-XX	M85049/9-11W	.437	.250	1.000-20 UNEF	1.250	1.145	3.312	3.375	2.812
MS3408DJ 17EXX	MS3406D-16S-XX	M85049/9-40W	.625	.350	1.000-20 UNEF	1.250	1.332	3.312	3.438	2.812
MS3408DJ 18AXX	MS3406D-18-XX	M85049/9-13W	.625	.350	1.125-18 UNEF	1.344	1.332	3.438	3.625	2.875
MS3408DJ 18BXX	MS3406D-18-XX	M85049/9-52W	.750	.500	1.125-18 UNEF	1.344	1.551	3.500	3.625	2.875
MS3408DJ 18EXX	MS3406D-18-XX	M85049/9-41W	.312	.125	1.125-18 UNEF	1.344	.957	3.438	3.625	2.875
MS3408DJ 18FXX	MS3406D-18-XX	M85049/9-42W	.437	.250	1.125-18 UNEF	1.344	1.145	3.438	3.625	2.875
MS3408DJ 20AXX	MS3406D-20-XX	M85049/9-15W	.625	.350	1.250-18 UNEF	1.469	1.332	3.438	3.625	2.875
MS3408DJ 20BXX	MS3406D-20-XX	M85049/9-54W	.750	.500	1.250-18 UNEF	1.469	1.551	3.500	3.625	2.875
MS3408DJ 20EXX	MS3406D-20-XX	M85049/9-55W	1.250	.875	1.250-18 UNEF	1.469	2.113	4.062	4.938	3.875
MS3408DJ 20FXX	MS3406D-20-XX	M85049/9-43W	.437	.250	1.250-18 UNEF	1.469	1.145	3.438	3.625	2.875
MS3408DJ 20GXX	MS3406D-20-XX	M85049/9-16W	.904	.625	1.250-18 UNEF	1.469	1.770	3.250	3.750	2.875
MS3408DJ 22AXX	MS3406D-22-XX	M85049/9-56W	.625	.350	1.375-18 UNEF	1.594	1.332	3.562	3.875	3.000
MS3408DJ 22BXX	MS3406D-22-XX	M85049/9-17W	.750	.500	1.375-18 UNEF	1.594	1.551	3.625	3.875	3.000
MS3408DJ 22DXX	MS3406D-22-XX	M85049/9-57W	.937	.625	1.375-18 UNEF	1.594	1.770	3.688	3.938	3.000
MS3408DJ 22EXX	MS3406D-22-XX	M85049/9-58W	1.250	.875	1.375-18 UNEF	1.594	2.113	4.062	4.938	3.875
MS3408DJ 22FXX	MS3406D-22-XX	M85049/9-44W	.312	.125	1.375-18 UNEF	1.594	.957	3.562	3.875	3.000
MS3408DJ 22GXX	MS3406D-22-XX	M85049/9-45W	.437	.250	1.375-18 UNEF	1.594	1.145	3.562	3.875	3.000
MS3408DJ 22HXX	MS3406D-22-XX	M85049/9-18W	1.029	.875	1.375-18 UNEF	1.594	2.113	3.562	4.062	3.000

\* ADD .375 WHEN CONTACT ARRANGEMENT INCLUDES SIZE 8, 4 AND 0 CONTACTS.

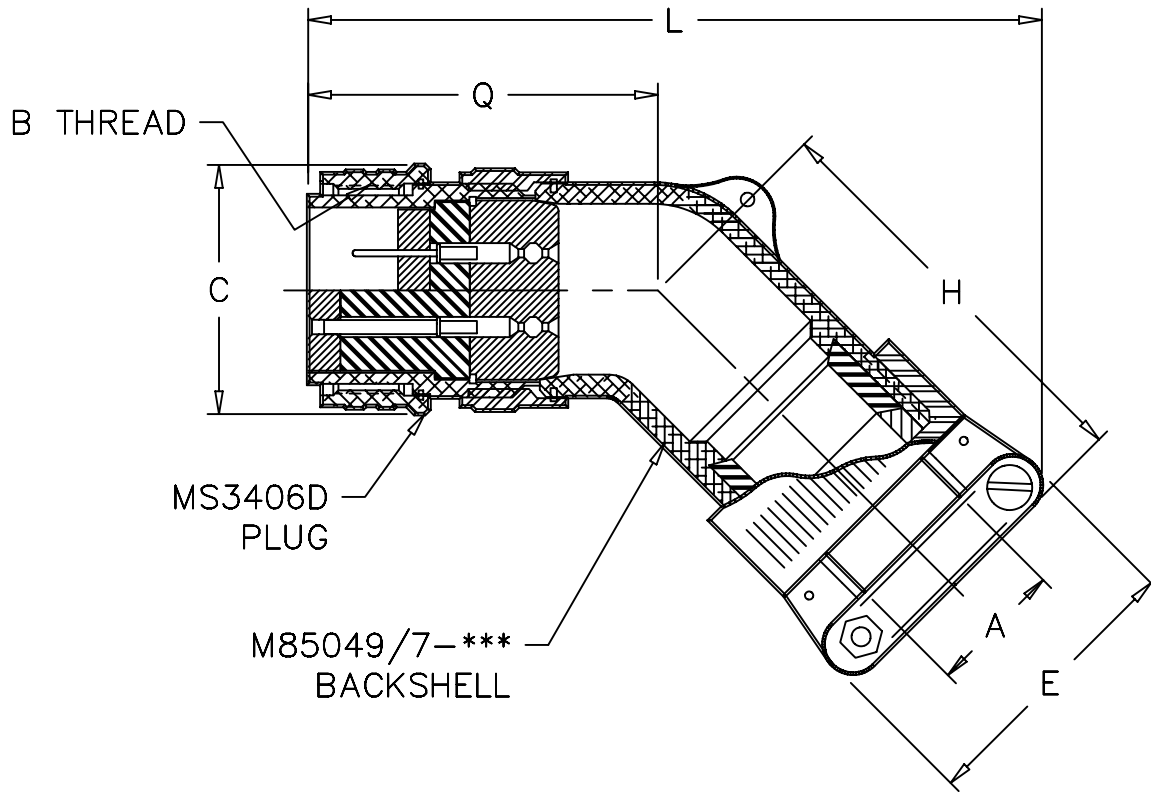
# MS3408DJ

ASSEMBLY NO.	CONNECTOR RECEPTACLE NO.	BACKSHELL ASSEMBLY NO.	A CABLE ENTRY		B THREAD CLASS 2B	C MAX.	E MAX.	H MAX.	L* MAX.	Q MAX.
			MAX.	MIN.						
MS3408DJ 24AXX	MS3406D -24-XX	M85049/9 -19W	.750	.500	1.500-18 UNEF	1.719	1.551	3.625	3.875	3.000
MS3408DJ 24DXX	MS3406D -24-XX	M85049/9 -59W	.937	.625	1.500-18 UNEF	1.719	1.770	3.688	3.938	3.000
MS3408DJ 24EXX	MS3406D -24-XX	M85049/9 -73W	1.250	.875	1.500-18 UNEF	1.719	2.113	4.062	4.938	3.875
MS3408DJ 24FXX	MS3406D -24-XX	M85049/9 -46W	.625	.350	1.500-18 UNEF	1.719	1.332	3.562	3.875	3.000
MS3408DJ 24GXX	MS3406D -24-XX	M85049/9 -20W	1.144	.875	1.500-18 UNEF	1.719	2.113	3.562	4.062	3.000
MS3408DJ 28AXX	MS3406D -28-XX	M85049/9 -60W	.750	.500	1.750-18 UNS	1.969	1.551	3.750	4.125	3.125
MS3408DJ 28BXX	MS3406D -28-XX	M85049/9 -21W	.937	.625	1.750-18 UNS	1.969	1.770	3.875	4.125	3.125
MS3408DJ 28DXX	MS3406D -28-XX	M85049/9 -61W	1.250	.875	1.750-18 UNS	1.969	2.113	4.062	4.188	3.125
MS3408DJ 28EXX	MS3406D -28-XX	M85049/9 -22W	1.375	1.000	1.750-18 UNS	1.969	2.363	3.875	4.312	3.125
MS3408DJ 32AXX	MS3406D -32-XX	M85049/9 -23W	.937	.625	2.000-18 UNS	2.219	1.770	4.125	4.625	3.500
MS3408DJ 32BXX	MS3406D -32-XX	M85049/9 -24W	1.250	.875	2.000-18 UNS	2.219	2.113	4.312	4.625	3.500
MS3408DJ 32DXX	MS3406D -32-XX	M85049/9 -62W	1.375	1.000	2.000-18 UNS	2.219	2.363	4.438	4.625	3.500
MS3408DJ 32EXX	MS3406D -32-XX	M85049/9 -25W	1.625	1.250	2.000-18 UNS	2.219	2.770	4.375	4.875	3.500
MS3408DJ 36AXX	MS3406D -36-XX	M85049/9 -63W	1.250	.875	2.250-16 UN	2.469	2.113	4.312	4.938	3.688
MS3408DJ 36BXX	MS3406D -36-XX	M85049/9 -27W	1.375	1.000	2.250-16 UN	2.469	2.363	4.438	4.938	3.688
MS3408DJ 36DXX	MS3406D -36-XX	M85049/9 -64W	1.625	1.250	2.250-16 UN	2.469	2.770	4.688	5.062	3.688
MS3408DJ 36EXX	MS3406D -36-XX	M85049/9 -28W	1.840	1.437	2.250-16 UN	2.469	3.020	4.375	5.188	3.688
MS3408DJ 36FXX	MS3406D -36-XX	M85049/9 -47W	.750	.500	2.250-16 UN	2.469	1.551	4.000	4.938	3.688
MS3408DJ 36GXX	MS3406D -36-XX	M85049/9 -26W	.937	.625	2.250-16 UN	2.469	1.770	4.062	4.938	3.688
MS3408DJ 40AXX	MS3406D -40-XX	M85049/9 -65W	1.250	.875	2.500-16 UN	2.719	2.113	4.312	5.688	4.438
MS3408DJ 40BXX	MS3406D -40-XX	M85049/9 -30W	1.375	1.000	2.500-16 UN	2.719	2.363	4.438	5.688	4.438
MS3408DJ 40DXX	MS3406D -40-XX	M85049/9 -66W	1.625	1.250	2.500-16 UN	2.719	2.770	4.688	5.812	4.438
MS3408DJ 40EXX	MS3406D -40-XX	M85049/9 -31W	1.840	1.437	2.500-16 UN	2.719	3.020	4.375	5.938	4.438
MS3408DJ 40FXX	MS3406D -40-XX	M85049/9 -48W	.750	.500	2.500-16 UN	2.719	1.551	4.000	5.688	3.688
MS3408DJ 44AXX	MS3406D -44-XX	M85049/9 -67W	1.250	.875	2.750-16 UN	2.969	2.113	4.312	5.688	4.438
MS3408DJ 44BXX	MS3406D -44-XX	M85049/9 -33W	1.375	1.000	2.750-16 UN	2.969	2.363	4.438	5.688	4.438
MS3408DJ 44DXX	MS3406D -44-XX	M85049/9 -68W	1.625	1.250	2.750-16 UN	2.969	2.770	4.688	5.812	4.438
MS3408DJ 44EXX	MS3406D -44-XX	M85049/9 -34W	1.840	1.437	2.750-16 UN	2.969	3.020	4.375	5.938	4.438
MS3408DJ 44FXX	MS3406D -44-XX	M85049/9 -32W	.937	.625	2.750-16 UN	2.969	1.770	4.062	5.688	4.438
MS3408DJ 48AXX	MS3406D -48-XX	M85049/9 -69W	1.250	.875	3.000-16 UN	3.219	2.113	4.312	5.688	4.438
MS3408DJ 48BXX	MS3406D -48-XX	M85049/9 -36W	1.375	1.000	3.000-16 UN	3.219	2.363	4.438	5.688	4.438
MS3408DJ 48DXX	MS3406D -48-XX	M85049/9 -70W	1.625	1.250	3.000-16 UN	3.219	2.770	4.688	5.812	4.438
MS3408DJ 48EXX	MS3406D -48-XX	M85049/9 -37W	1.840	1.437	3.000-16 UN	3.219	3.020	4.375	5.938	4.438

\* ADD .375 WHEN CONTACT ARRANGEMENT INCLUDES SIZE 8, 4 AND 0 CONTACTS.

# MS3409DJ

## 45 BACKSHELL ASSEMBLY



ASSEMBLY NO.	CONNECTOR RECEPTACLE NO.	BACKSHELL ASSEMBLY NO.	A CABLE ENTRY		B THREAD CLASS 2B	C MAX.	E MAX.	H MAX.	L * MAX.	Q MAX.
			MAX.	MIN.						
MS3409DJ 10AXX	MS3406D-10S-XX	M85049/7-04W	.312	.125	.625-24 UNEF	.969	.957	3.062	4.875	2.438
MS3409DJ 10BXX	MS3406D-10S-XX	M85049/7-49W	.437	.250	.625-24 UNEF	.969	1.145	3.062	5.812	3.250
MS3409DJ 10DXX	MS3406D-10S-XX	M85049/7-05W	.375	.250	.625-24 UNEF	.969	1.145	2.438	4.562	2.438
MS3409DJ 11AXX	MS3406D-10SL-XX	M85049/7-04W	.312	.125	.625-24 UNEF	.969	.957	3.062	4.875	2.438
MS3409DJ 11BXX	MS3406D-10SL-XX	M85049/7-49W	.437	.250	.625-24 UNEF	.969	1.145	3.062	5.812	3.250
MS3409DJ 11DXX	MS3406D-10SL-XX	M85049/7-05W	.375	.250	.625-24 UNEF	.969	1.145	2.438	4.562	2.438
MS3409DJ 12AXX	MS3406D-12-XX	M85049/7-06W	.312	.125	.750-20 UNEF	1.062	.957	3.062	5.000	2.500
MS3409DJ 12BXX	MS3406D-12-XX	M85049/7-71W	.625	.350	.750-20 UNEF	1.062	1.332	2.938	6.188	3.375
MS3409DJ 12DXX	MS3406D-12-XX	M85049/7-08W	.500	.350	.750-20 UNEF	1.062	1.332	3.062	5.125	2.500
MS3409DJ 12EXX	MS3406D-12-XX	M85049/7-07W	.437	.250	.750-20 UNEF	1.062	1.145	3.062	5.062	2.500
MS3409DJ 13AXX	MS3406D-12S-XX	M85049/7-06W	.312	.125	.750-20 UNEF	1.062	.957	3.062	5.000	2.500

\* ADD .375 WHEN CONTACT ARRANGEMENT INCLUDES SIZE 8, 4 AND 0 CONTACTS.

# MS3409DJ

ASSEMBLY NO.	CONNECTOR RECEPTACLE NO.	BACKSHELL ASSEMBLY NO.	A CABLE ENTRY		B THREAD CLASS 2B	C MAX.	E MAX.	H MAX.	L * MAX.	Q MAX.
			MAX.	MIN.						
MS3409DJ 13BXX	MS3406D-12S-XX	M85049/7-71W	.625	.350	.750-20 UNEF	1.062	1.332	2.938	6.188	3.375
MS3409DJ 13DXX	MS3406D-12S-XX	M85049/7-08W	.500	.350	.750-20 UNEF	1.062	1.332	3.062	5.125	2.500
MS3409DJ 13EXX	MS3406D-12S-XX	M85049/7-07W	.437	.250	.750-20 UNEF	1.062	1.145	3.062	5.062	2.500
MS3409DJ 14AXX	MS3406D-14-XX	M85049/7-09W	.437	.250	.875-20 UNEF	1.156	1.145	3.188	5.188	2.562
MS3409DJ 14BXX	MS3406D-14-XX	M85049/7-50W	.750	.500	.875-20 UNEF	1.156	1.551	3.500	6.625	3.625
MS3409DJ 14DXX	MS3406D-14-XX	M85049/7-10W	.575	.350	.875-20 UNEF	1.156	1.332	2.812	5.000	2.562
MS3409DJ 14EXX	MS3406D-14-XX	M85049/7-74W	.312	.125	.875-20 UNEF	1.156	.957	3.188	5.125	2.562
MS3409DJ 15AXX	MS3406D-14S-XX	M85049/7-09W	.437	.250	.875-20 UNEF	1.156	1.145	3.188	5.188	2.562
MS3409DJ 15BXX	MS3406D-14S-XX	M85049/7-50W	.750	.500	.875-20 UNEF	1.156	1.551	3.500	6.625	3.625
MS3409DJ 15DXX	MS3406D-14S-XX	M85049/7-10W	.575	.350	.875-20 UNEF	1.156	1.332	2.812	5.000	2.562
MS3409DJ 15EXX	MS3406D-14S-XX	M85049/7-74W	.312	.125	.875-20 UNEF	1.156	.957	3.188	5.125	2.562
MS3409DJ 16AXX	MS3406D-16-XX	M85049/7-12W	.700	.500	1.000-20 UNEF	1.250	1.551	2.938	5.312	2.625
MS3409DJ 16BXX	MS3406D-16-XX	M85049/7-51W	.937	.625	1.000-20 UNEF	1.250	1.770	3.750	6.938	3.688
MS3409DJ 16DXX	MS3406D-16-XX	M85049/7-11W	.437	.250	1.000-20 UNEF	1.250	1.145	3.312	5.375	2.625
MS3409DJ 16EXX	MS3406D-16-XX	M85049/7-40W	.625	.350	1.000-20 UNEF	1.250	1.332	3.312	5.438	2.625
MS3409DJ 17AXX	MS3406D-16S-XX	M85049/7-12W	.700	.500	1.000-20 UNEF	1.250	1.551	2.938	5.312	2.625
MS3409DJ 17BXX	MS3406D-16S-XX	M85049/7-51W	.937	.625	1.000-20 UNEF	1.250	1.770	3.750	6.938	3.688
MS3409DJ 17DXX	MS3406D-16S-XX	M85049/7-11W	.437	.250	1.000-20 UNEF	1.250	1.145	3.312	5.375	2.625
MS3409DJ 17EXX	MS3406D-16S-XX	M85049/7-40W	.625	.350	1.000-20 UNEF	1.250	1.332	3.312	5.438	2.625
MS3409DJ 18AXX	MS3406D-18-XX	M85049/7-13W	.625	.350	1.125-18 UNEF	1.344	1.332	3.500	5.750	2.812
MS3409DJ 18BXX	MS3406D-18-XX	M85049/7-52W	.750	.500	1.125-18 UNEF	1.344	1.551	3.500	5.875	2.812
MS3409DJ 18EXX	MS3406D-18-XX	M85049/7-41W	.312	.125	1.125-18 UNEF	1.344	.957	3.500	5.625	2.812
MS3409DJ 18FXX	MS3406D-18-XX	M85049/7-42W	.437	.250	1.125-18 UNEF	1.344	1.145	3.500	5.688	2.812
MS3409DJ 20AXX	MS3406D-20-XX	M85049/7-15W	.625	.350	1.250-18 UNEF	1.469	1.332	3.500	5.750	2.812
MS3409DJ 20BXX	MS3406D-20-XX	M85049/7-54W	.750	.500	1.250-18 UNEF	1.469	1.551	3.500	5.875	2.812
MS3409DJ 20EXX	MS3406D-20-XX	M85049/7-55W	1.250	.875	1.250-18 UNEF	1.469	2.113	4.000	7.375	2.812
MS3409DJ 20FXX	MS3406D-20-XX	M85049/7-43W	.437	.250	1.250-18 UNEF	1.469	1.145	3.500	5.688	2.812
MS3409DJ 20GXX	MS3406D-20-XX	M85049/7-16W	.904	.625	1.250-18 UNEF	1.469	1.770	3.250	5.750	2.812
MS3409DJ 22AXX	MS3406D-22-XX	M85049/7-56W	.625	.350	1.375-18 UNEF	1.594	1.332	3.625	5.938	2.938
MS3409DJ 22BXX	MS3406D-22-XX	M85049/7-17W	.750	.500	1.375-18 UNEF	1.594	1.551	3.688	6.062	2.938
MS3409DJ 22DXX	MS3406D-22-XX	M85049/7-57W	.937	.625	1.375-18 UNEF	1.594	1.770	3.750	6.188	2.938
MS3409DJ 22EXX	MS3406D-22-XX	M85049/7-58W	1.250	.875	1.375-18 UNEF	1.594	2.113	4.000	7.375	3.812
MS3409DJ 22FXX	MS3406D-22-XX	M85049/7-44W	.312	.125	1.375-18 UNEF	1.594	.957	3.625	5.812	2.938
MS3409DJ 22GXX	MS3406D-22-XX	M85049/7-45W	.437	.250	1.375-18 UNEF	1.594	1.145	3.625	5.875	2.938

\* ADD .375 WHEN CONTACT ARRANGEMENT INCLUDES SIZE 8, 4 AND 0 CONTACTS.

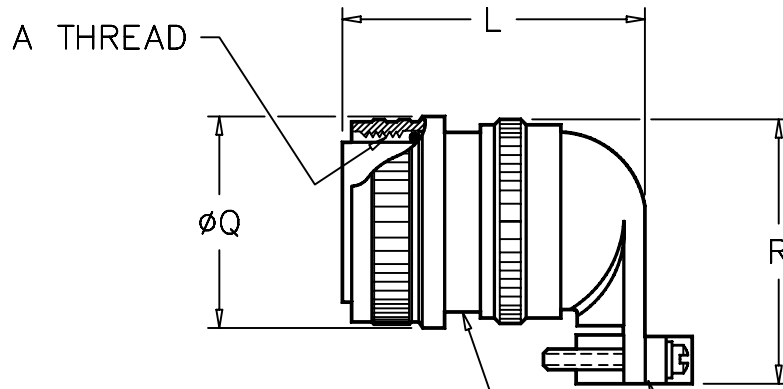
# MS3409DJ

ASSEMBLY NO.	CONNECTOR RECEPTACLE NO.	BACKSHELL ASSEMBLY NO.	A CABLE ENTRY		B THREAD CLASS 2B	C MAX.	E MAX.	H MAX.	L * MAX.	Q MAX.
			MAX.	MIN.						
MS3409DJ 22HXX	MS3406D -22-XX	M85049/7 -18W	1.029	.875	1.375-18 UNEF	1.594	2.113	3.625	6.250	2.938
MS3409DJ 24AXX	MS3406D -24-XX	M85049/7 -19W	.750	.500	1.500-18 UNEF	1.719	1.551	3.688	6.062	2.938
MS3409DJ 24DXX	MS3406D -24-XX	M85049/7 -59W	.937	.625	1.500-18 UNEF	1.719	1.770	3.750	6.188	2.938
MS3409DJ 24EXX	MS3406D -24-XX	M85049/7 -73W	1.250	.875	1.500-18 UNEF	1.719	2.113	4.000	7.375	3.812
MS3409DJ 24FXX	MS3406D -24-XX	M85049/7 -46W	.625	.350	1.500-18 UNEF	1.719	1.332	3.625	5.938	2.938
MS3409DJ 24GXX	MS3406D -24-XX	M85049/7 -20W	1.144	.875	1.500-18 UNEF	1.719	2.113	3.625	6.250	2.938
MS3409DJ 28AXX	MS3406D -28-XX	M85049/7 -60W	.750	.500	1.750-18 UNS	1.969	1.551	3.688	6.250	3.062
MS3409DJ 28BXX	MS3406D -28-XX	M85049/7 -21W	.937	.625	1.750-18 UNS	1.969	1.770	3.812	6.375	3.062
MS3409DJ 28DXX	MS3406D -28-XX	M85049/7 -61W	1.250	.875	1.750-18 UNS	1.969	2.113	4.000	6.625	3.062
MS3409DJ 28EXX	MS3406D -28-XX	M85049/7 -22W	1.375	1.000	1.750-18 UNS	1.969	2.363	3.812	6.562	3.062
MS3409DJ 32AXX	MS3406D -32-XX	M85049/7 -23W	.937	.625	2.000-18 UNS	2.219	1.770	3.938	6.500	3.125
MS3409DJ 32BXX	MS3406D -32-XX	M85049/7 -24W	1.250	.875	2.000-18 UNS	2.219	2.113	4.125	6.750	3.125
MS3409DJ 32DXX	MS3406D -32-XX	M85049/7 -62W	1.375	1.000	2.000-18 UNS	2.219	2.363	4.250	6.938	3.125
MS3409DJ 32EXX	MS3406D -32-XX	M85049/7 -25W	1.625	1.250	2.000-18 UNS	2.219	2.770	4.188	7.062	3.125
MS3409DJ 36AXX	MS3406D -36-XX	M85049/7 -63W	1.250	.875	2.250-16 UN	2.469	2.113	4.250	6.875	3.125
MS3409DJ 36BXX	MS3406D -36-XX	M85049/7 -27W	1.375	1.000	2.250-16 UN	2.469	2.363	4.375	7.062	3.125
MS3409DJ 36DXX	MS3406D -36-XX	M85049/7 -64W	1.625	1.250	2.250-16 UN	2.469	2.770	4.625	7.375	3.125
MS3409DJ 36EXX	MS3406D -36-XX	M85049/7 -28W	1.840	1.437	2.250-16 UN	2.469	3.020	4.312	7.250	3.125
MS3409DJ 36FXX	MS3406D -36-XX	M85049/7 -47W	.750	.500	2.250-16 UN	2.469	1.551	3.875	6.438	3.125
MS3409DJ 36GXX	MS3406D -36-XX	M85049/7 -26W	.937	.625	2.250-16 UN	2.469	1.770	4.000	6.625	3.125
MS3409DJ 40AXX	MS3406D -40-XX	M85049/7 -65W	1.250	.875	2.500-16 UN	2.719	2.113	4.250	7.625	3.875
MS3409DJ 40BXX	MS3406D -40-XX	M85049/7 -30W	1.375	1.000	2.500-16 UN	2.719	2.363	4.375	7.812	3.875
MS3409DJ 40DXX	MS3406D -40-XX	M85049/7 -66W	1.625	1.250	2.500-16 UN	2.719	2.770	4.625	8.125	3.875
MS3409DJ 40EXX	MS3406D -40-XX	M85049/7 -31W	1.840	1.437	2.500-16 UN	2.719	3.020	4.312	8.000	3.875
MS3409DJ 40FXX	MS3406D -40-XX	M85049/7 -48W	.750	.500	2.500-16 UN	2.719	1.551	3.875	7.188	3.125
MS3409DJ 44AXX	MS3406D -44-XX	M85049/7 -67W	1.250	.875	2.750-16 UN	2.969	2.113	4.250	7.625	3.875
MS3409DJ 44BXX	MS3406D -44-XX	M85049/7 -33W	1.375	1.000	2.750-16 UN	2.969	2.363	4.375	7.812	3.875
MS3409DJ 44DXX	MS3406D -44-XX	M85049/7 -68W	1.625	1.250	2.750-16 UN	2.969	2.770	4.625	8.125	3.875
MS3409DJ 44EXX	MS3406D -44-XX	M85049/7 -34W	1.840	1.437	2.750-16 UN	2.969	3.020	4.312	8.000	3.875
MS3409DJ 44FXX	MS3406D -44-XX	M85049/7 -32W	.937	.625	2.750-16 UN	2.969	1.770	4.000	7.375	3.875
MS3409DJ 48AXX	MS3406D -48-XX	M85049/7 -69W	1.250	.875	3.000-16 UN	3.219	2.113	4.250	7.625	3.875
MS3409DJ 48BXX	MS3406D -48-XX	M85049/7 -36W	1.375	1.000	3.000-16 UN	3.219	2.363	4.375	7.812	3.875
MS3409DJ 48DXX	MS3406D -48-XX	M85049/7 -70W	1.625	1.250	3.000-16 UN	3.219	2.770	4.625	8.125	3.875
MS3409DJ 48EXX	MS3406D -48-XX	M85049/7 -37W	1.840	1.437	3.000-16 UN	3.219	3.020	4.312	8.000	3.875

\* ADD .375 WHEN CONTACT ARRANGEMENT INCLUDES SIZE 8, 4 AND 0 CONTACTS.

# MS3408D

## 90 PLUG CABLE CLAMP ASSEMBLY



SHELL SIZE	A COUPLING THREAD CLASS 2B	ØQ MAX.	L MAX.		R MAX.
			CONTACT SIZE		
			16 & 12	8,4 & 0	
8S	1/2-28 UNEF	.844	2.495	-	1.230
10S	5/8-24 UNEF	.969	2.500	-	1.352
10SL	5/8-24 UNEF	.969	2.555	-	1.352
12S	3/4-20 UNEF	1.062	2.555	-	1.460
12	3/4-20 UNEF	1.062	2.625	-	1.460
14S	7/8-20 UNEF	1.156	2.615	-	1.570
14	7/8-20 UNEF	1.156	2.685	-	1.570
16S	1-20 UNEF	1.250	2.695	-	1.681
16	1-20 UNEF	1.250	2.765	3.165	1.681
18	1 1/8-18 UNEF	1.344	2.810	3.210	1.905
20	1 1/4-18 UNEF	1.469	2.875	3.275	2.031
22	1 3/8-18 UNEF	1.594	2.935	3.335	2.155
24	1 1/2-18 UNEF	1.719	2.995	3.395	2.280
28	1 3/4-18 UNS	1.969	3.160	3.560	2.619
32	2-18 UNS	2.219	3.250	3.650	2.969
36	2 1/4-16 UN	2.469	3.375	3.775	3.219
40	2 1/2-16 UN	2.719	3.510	3.910	3.469
44	2 3/4-16 UN	2.969	3.635	4.035	3.843
48	3-16 UN	3.219	3.760	4.160	4.093

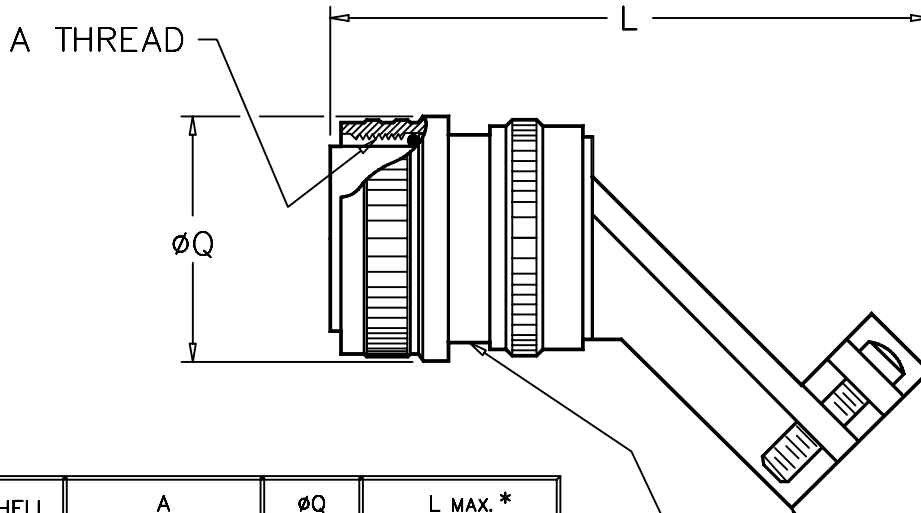
M85049/51-1-\*\*\*  
CABLE CLAMP

MS3406  
CONNECTOR PLUG



# MS3409D

## 45 PLUG CABLE CLAMP ASSEMBLY



SHELL SIZE	A THREAD CLASS 2B	ØQ MAX.	L MAX. *	
			CLASS D	CLASS DJ
8S	1/2-28 UNEF	.844	3.000	3.938
10S	5/8-24 UNEF	.969	3.062	4.438
10SL	5/8-24 UNEF	.969	3.062	4.438
12S	3/4-20 UNEF	1.062	3.125	4.562
12	3/4-20 UNEF	1.062	3.125	4.562
14S	7/8-20 UNEF	1.156	3.188	4.688
14	7/8-20 UNEF	1.156	3.188	4.688
16S	1-20 UNEF	1.250	3.250	6.125
16	1-20 UNEF	1.250	3.250	6.125
18	1 1/8-18 UNEF	1.344	3.375	5.188
20	1 1/4-18 UNEF	1.469	3.438	5.188
22	1 3/8-18 UNEF	1.594	3.500	5.375
24	1 1/2-18 UNEF	1.719	3.500	5.375
28	1 3/4-18 UNS	1.969	3.625	5.625
32	2-18 UNS	2.219	3.750	5.938
36	2 1/4-16 UN	2.469	3.812	6.062
40	2 1/2-16 UN	2.719	3.812	6.812
44	2 3/4-16 UN	2.969	4.062	6.812
48	3-16 UN	3.219	4.125	6.812

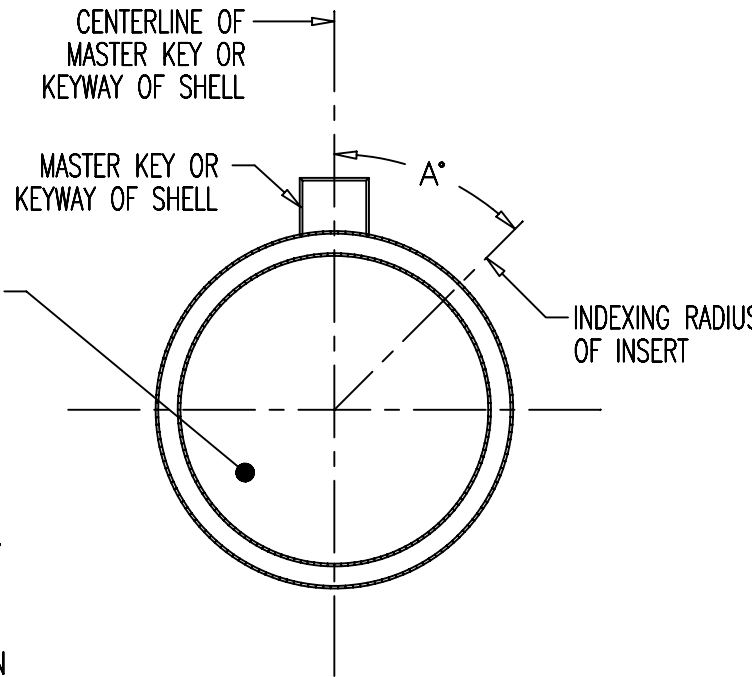
M85049/43-1-\*\*\*  
CABLE CLAMP

M3406D  
CONNECTOR PLUG

# POLARIZATION

## NORMAL POSITION :

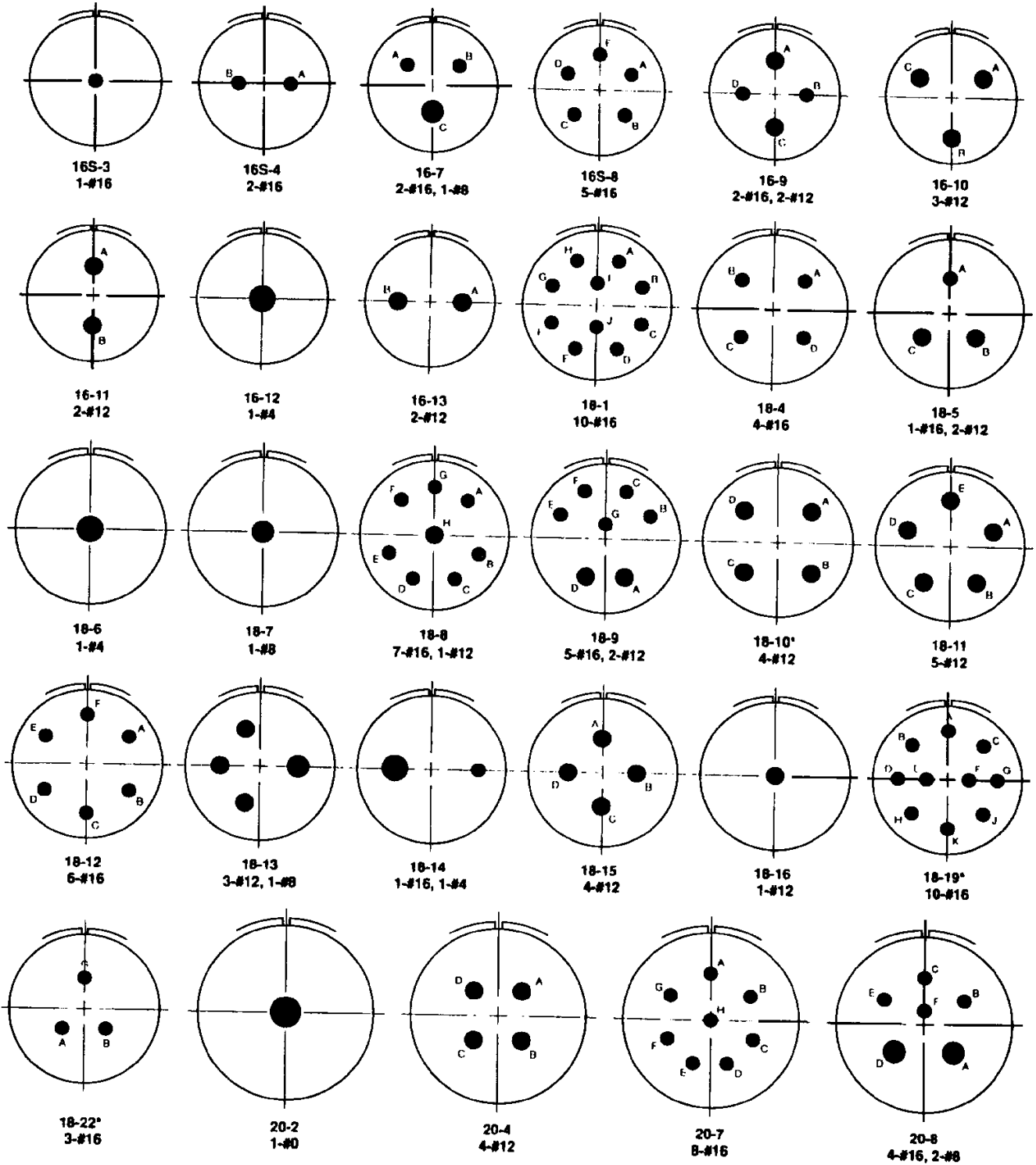
THE CENTERLINE OF THE FACE VIEW OF THE INSERT PATTERN ( SEE INSERT PATTERN LAYOUT CHART ) IS ALIGNED WITH THE SHELL KEY ON THE PLUG AND KEYWAY ON THE RECEPTACLE. THEREFORE, ANGLE A ON THE OPPOSITE DRAWING WOULD BE AT ZERO DEGREES.



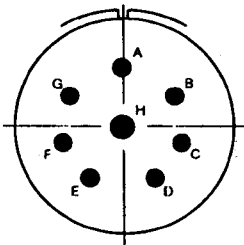
## ALTERNATE POSITIONS :

THE CENTERLINE OF THE FACE VIEW OF THE INSERT PATTERN ( SEE INSERT PATTERN LAYOUT CHART ) IS ROTATED IN RELATIONSHIP TO THE SHELL KEY ON THE PLUG AND KEYWAY ON THE RECEPTACLE. PIN INSERTS ARE ROTATED CLOCKWISE AND SOCKET INSERTS ARE ROTATED COUNTERCLOCKWISE. THEREFORE, A 12S-3 PIN INSERT LAYOUT IN THE W POSITION WOULD HAVE AN ANGLE A ( ON THE OPPOSITE DRAWING ) OF 70 DEGREES.

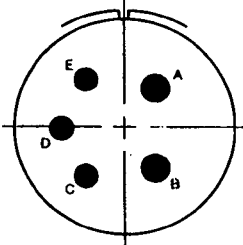
# MIL-STD 1651 INSERT ARRANGEMENTS



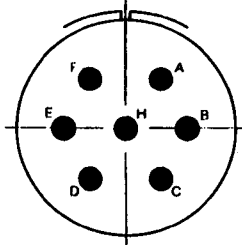
# MIL-STD 1651 INSERT ARRANGEMENTS



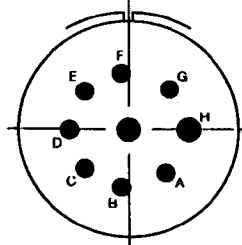
20-9  
1-#12, 7-#16



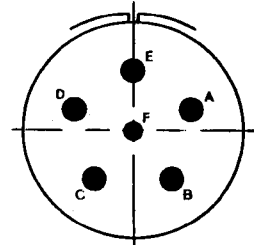
20-14  
3-#12, 2-#8



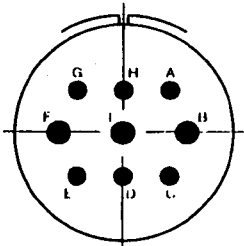
20-15  
7-#12



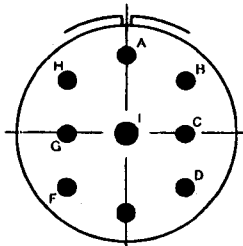
20-16  
7-#16, 2-#12



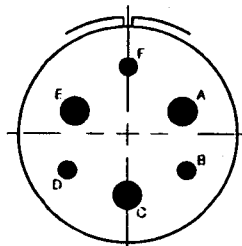
20-17  
1-#16, 5-#12



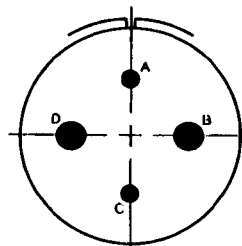
20-18  
6-#16, 3-#12



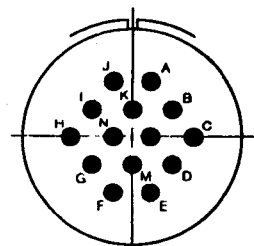
20-21  
8-#16, 1-#12



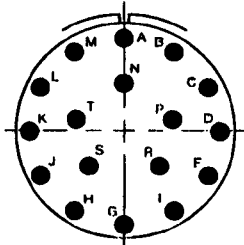
20-22  
3-#16, 3-#8



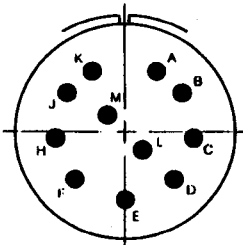
20-24  
2-#16, 2-#8



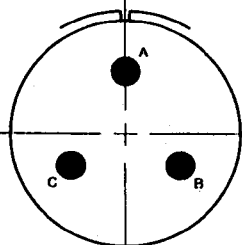
20-27  
14-#16



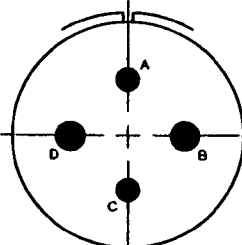
20-29  
17-#16



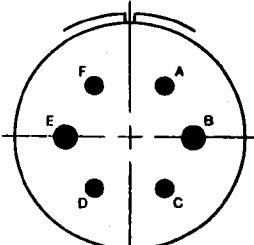
20-33  
11-#16



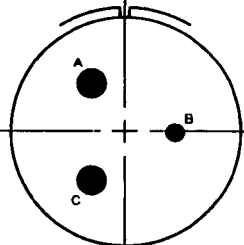
22-2  
3-#8



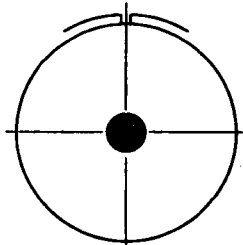
22-4\*  
2-#12, 2-#8



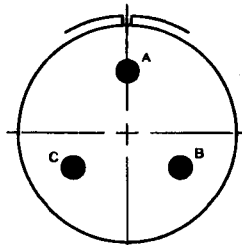
22-5  
4-#16, 2-#12



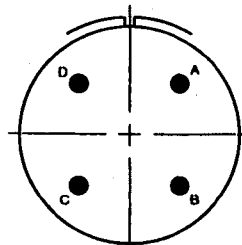
22-6\*  
1-#16, 2-#8



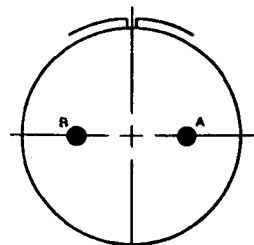
22-7  
1-#0



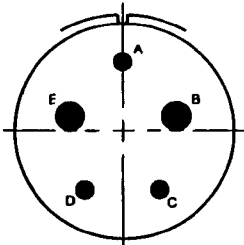
22-9  
3-#12



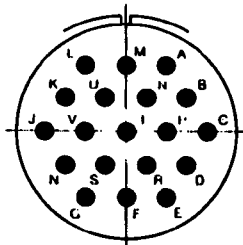
22-10  
4-#16



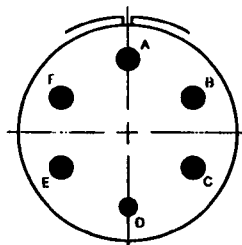
22-11  
2-#16



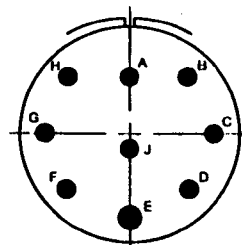
22-12  
3-#16, 2-#8



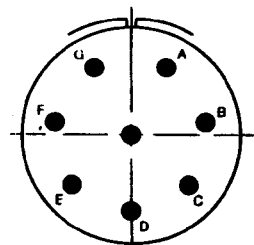
22-14  
19-#16



22-15  
1-#16, 5-#12

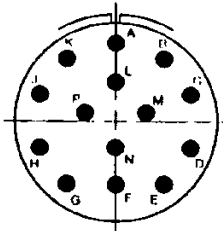


22-17  
8-#16, 1-#12

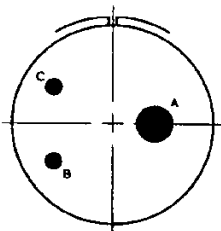


22-18  
8-#16

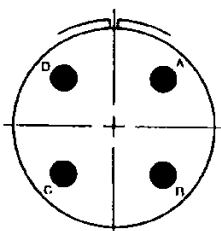
# MIL-STD 1651 INSERT ARRANGEMENTS



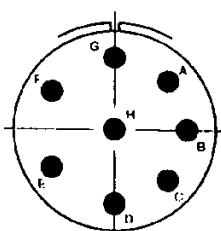
22-19  
14-#16



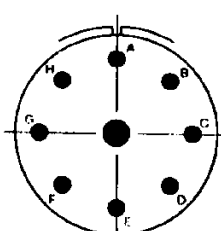
22-21  
2-#16, 1-#0



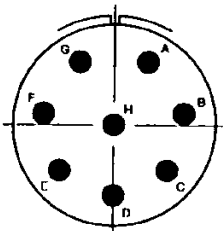
22-22  
4-#8



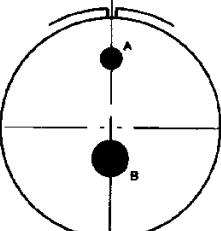
22-23  
8-#12



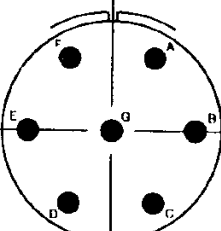
22-27  
1-#8, 6-#16



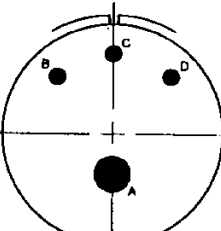
22-36  
8-#12



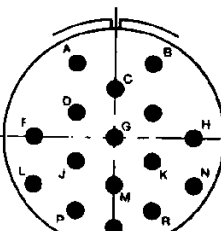
24-1\*  
1-#12, 1-#0



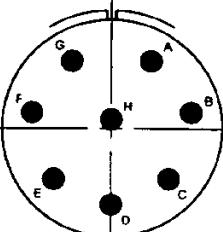
24-2  
7-#12



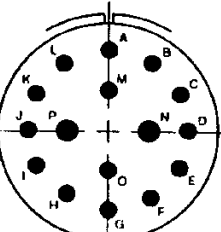
24-4  
3-#16, 1-#0



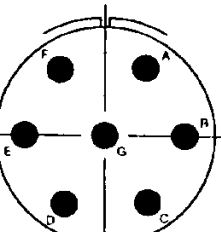
24-5\*  
16-#16



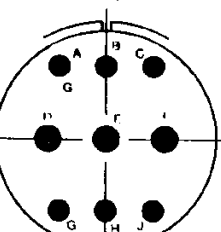
24-6  
8-#12



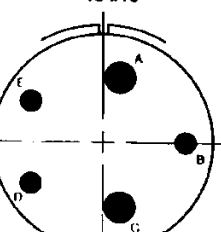
24-7  
14-#16, 2-#12



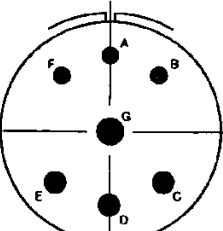
24-10  
7-#8



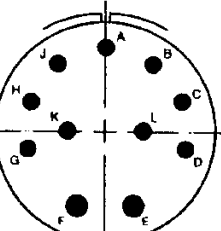
24-11  
6-#12, 3-#8



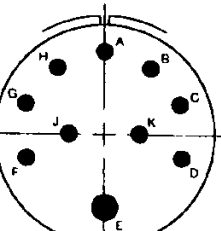
24-12  
3-#12, 2-#4



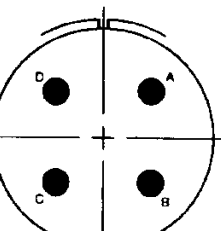
24-16  
3-#16, 1-#8, 3-#12



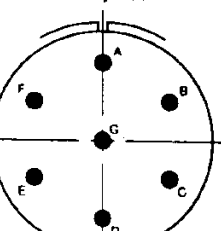
24-20  
9-#16, 2-#12



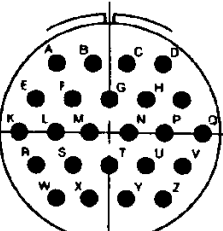
24-21  
9-#16, 1-#8



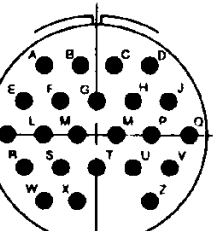
24-22  
4-#8



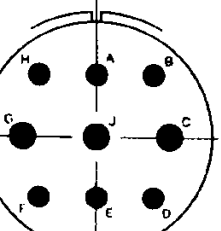
24-27  
7-#16



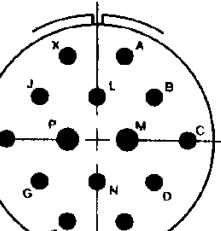
24-28  
24-#16



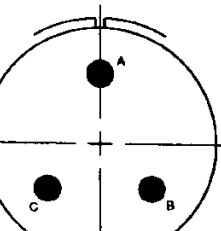
24-80  
23-#16



28-1  
6-#12, 3-#8

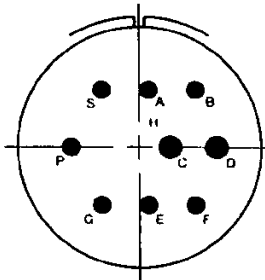


28-2  
12-#16, 2-#12

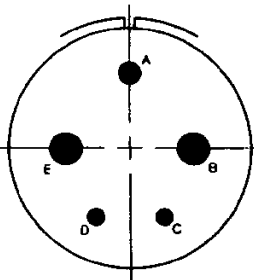


28-3  
3-#8

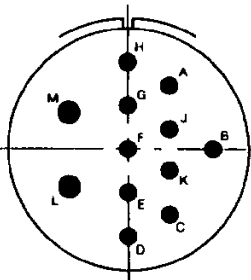
# MIL-STD 1651 INSERT ARRANGEMENTS



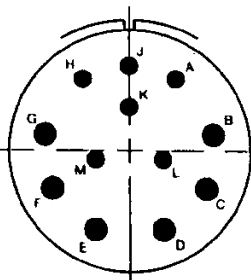
**28-4**  
7-#16, 2-#12



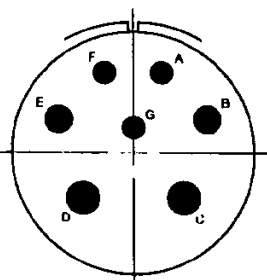
**28-5**  
2-#16, 1-#12, 2-#4



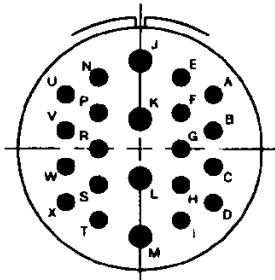
**28-8**  
2-#12, 10-#16



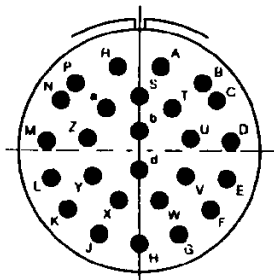
**28-9**  
6-#16, 6-#12



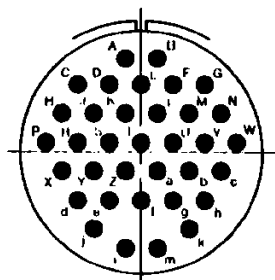
**28-10**  
3-#12, 2-#8, 2-#4



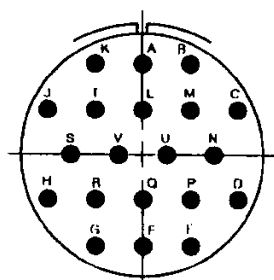
**28-11**  
18-#16, 4-#12



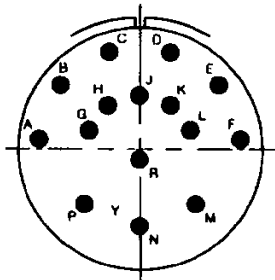
**28-12**  
26-#16



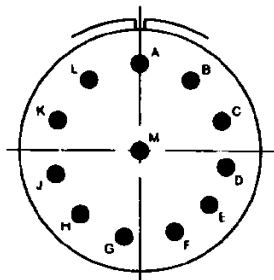
**28-15**  
35-#16



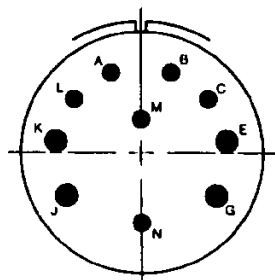
**28-16\***  
20-#16



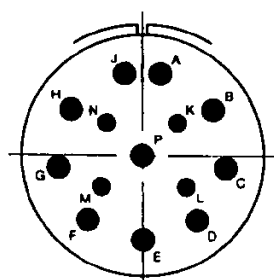
**28-17**  
15-#16



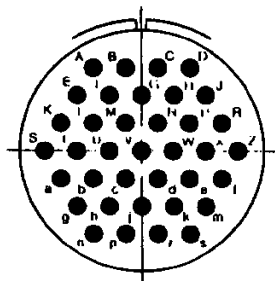
**28-18**  
12-#16



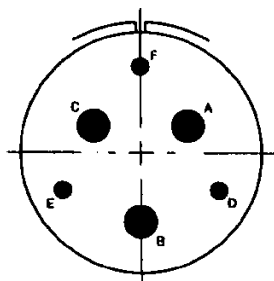
**28-19**  
6-#16, 4-#12



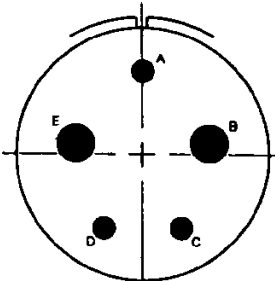
**28-20**  
4-#16, 10-#12



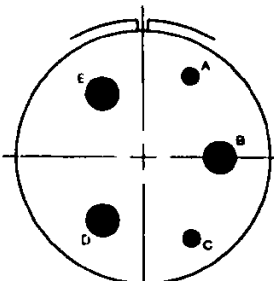
**28-21**  
37-#16



**28-22**  
3-#16, 3-#4

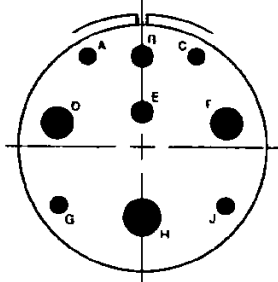


**32-1**  
3-#12, 2-#4

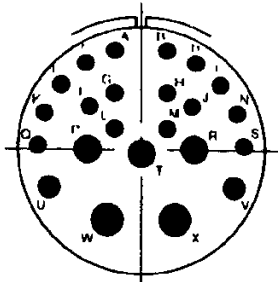


**32-2**  
2-#16, 3-#4

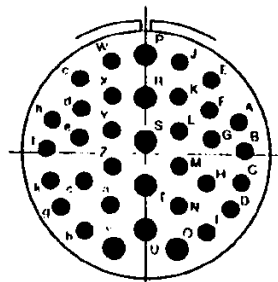
# MIL-STD 1651 INSERT ARRANGEMENTS



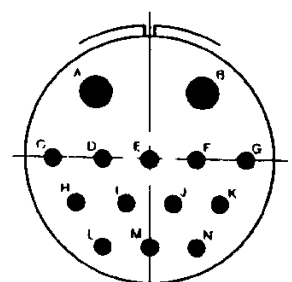
32-3  
4-#16, 2-#12,  
2-#4, 1-#0



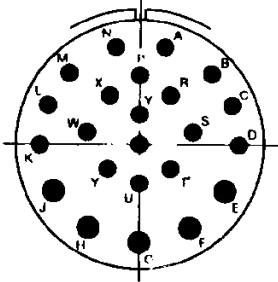
32-6  
16-#16, 2-#12,  
3-#8, 2-#4



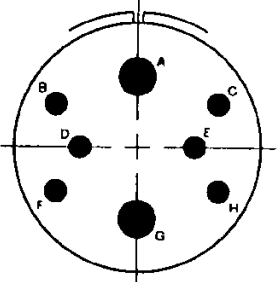
32-7  
28-#16, 7-#12



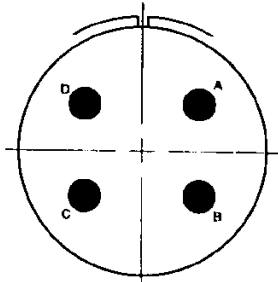
32-9  
12-#16, 2-#4



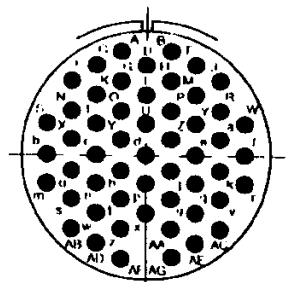
32-13  
18-#16, 5-#12



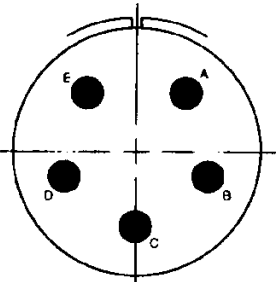
32-15  
6-#12, 2-#0



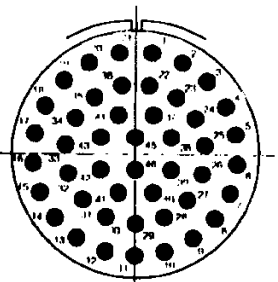
32-17  
4-#4



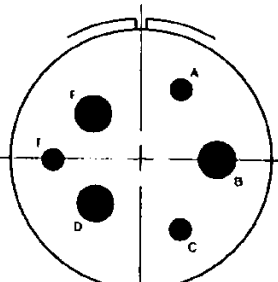
32-22  
54-#16



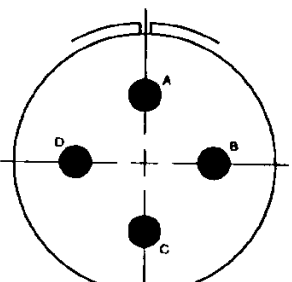
32-83  
5-#4



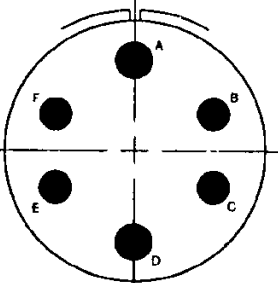
32-73  
46-#16



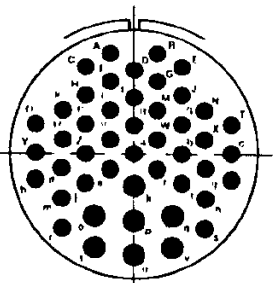
36-3  
3-#12, 3-#0



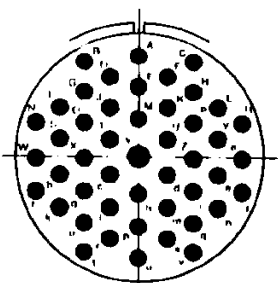
36-5  
4-#0



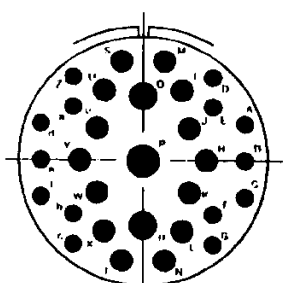
36-6  
4-#4, 2-#0



36-7  
40-#16, 7-#12

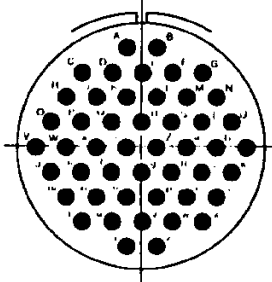


36-8  
45-#16, 1-#12

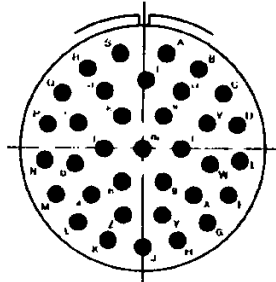


36-9  
14-#16, 14-#12,  
2-#8, 1-#4

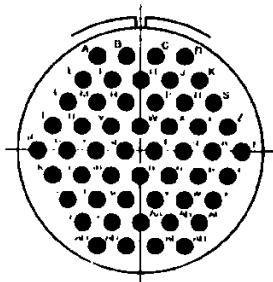
# MIL-STD 1651 INSERT ARRANGEMENTS



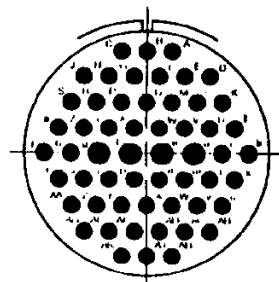
36-10  
48-#16



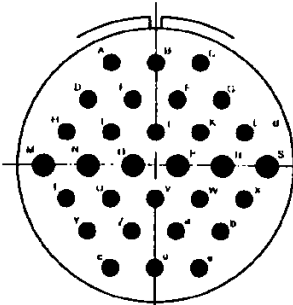
36-15  
35-#16



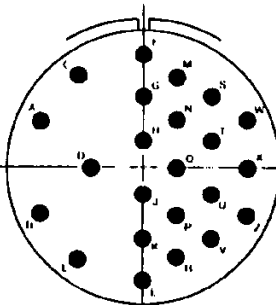
36-52  
52-#16



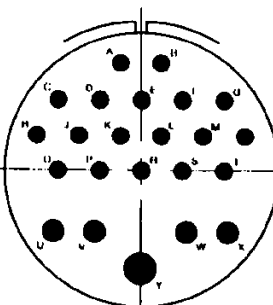
36-66  
52-#16, 4-#12



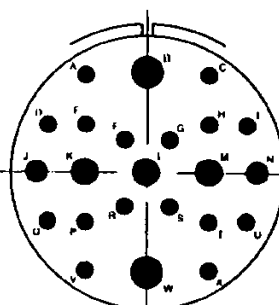
40-1  
24-#16, 6-#12



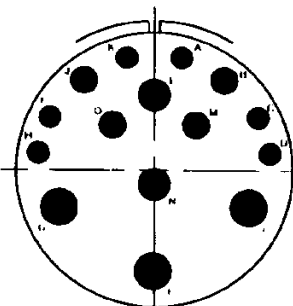
40-2  
23-#16



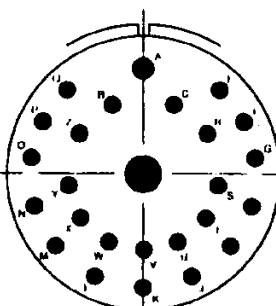
40-3  
18-#16, 4-#12, 1-#4



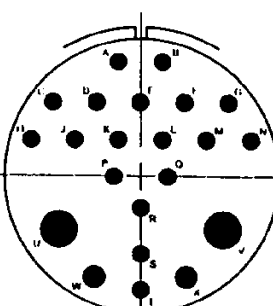
40-4  
16-#16, 2-#12, 3-#8, 2-#4



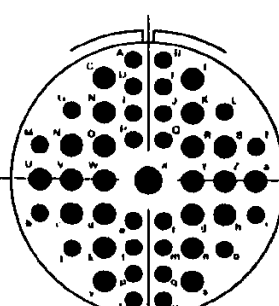
40-5  
6-#12, 4-#8, 2-#4, 3-#0



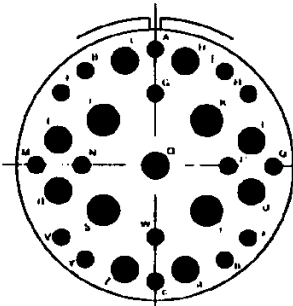
40-6  
24-#16, 1-#12, 1-#0



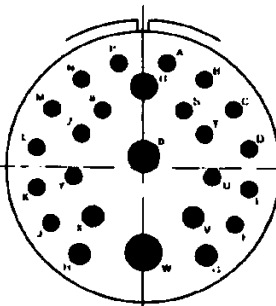
40-7  
2-#12, 2-#0, 16-#16



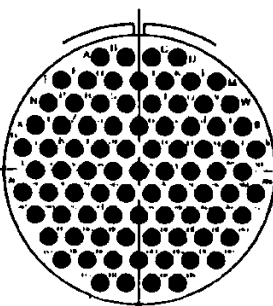
40-8  
24-#16, 22-#12, 1-#8



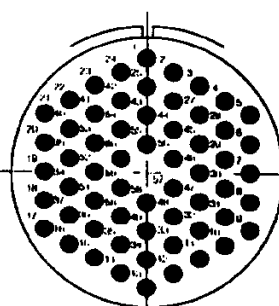
40-10  
16-#16, 9-#8, 4-#4



40-11  
18-#16, 4-#12, 1-#8, 1-#4, 1-#0



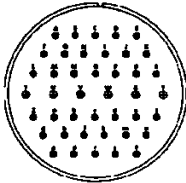
40-56  
85-#16



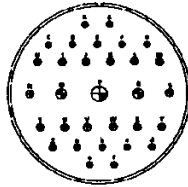
40-62  
60-#16



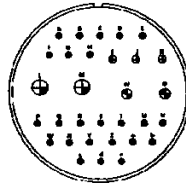
# MIL-STD 1651 INSERT ARRANGEMENTS



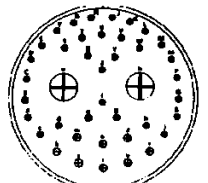
**44-1**  
36-#16  
6-#12



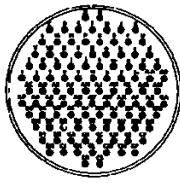
**44-2**  
14-#16  
14-#12  
2-#8  
1-#4



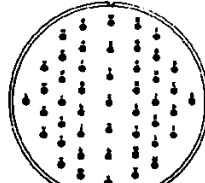
**44-3**  
24-#16  
3-#12  
2-#8  
2-#4



**44-4**  
31-#16  
8-#12  
2-#8



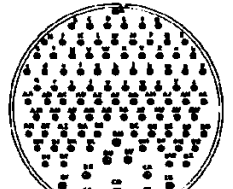
**44-52**  
104-#16



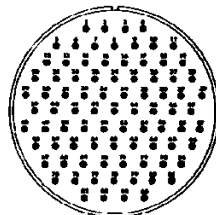
**48-2**  
46-#16  
1-#12



**48-4**  
47-#16  
6-#12  
3-#8  
2-#8



**48-5**  
90-#16  
9-#12  
1-#8



**48-62**  
85-#16