

INSTALL GUIDE

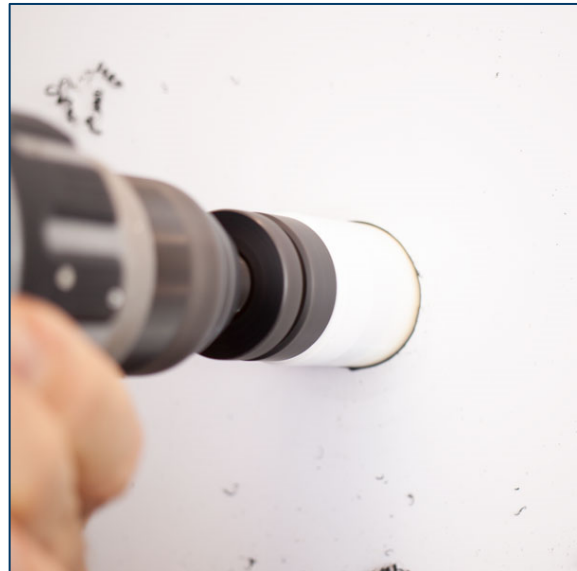
Tools Needed

- Personal Protective Equipment (PPE)
- Permanent marker
- Drill bits
- 38.1mm (1½ Inch) Hole Saw
- File or Deburring tool

Other tools may be required depending on the fastener type selected for your installation.

1 Ensure there are no electrical wires or fluid lines passing behind the panel where we will be drilling the clearance hole. Mark the centre hole and, while wearing appropriate PPE, drill a 3mm pilot hole.

2 Use the hole saw to enlarge the pilot hole to 38.1mm. File or deburr the edges of the hole.

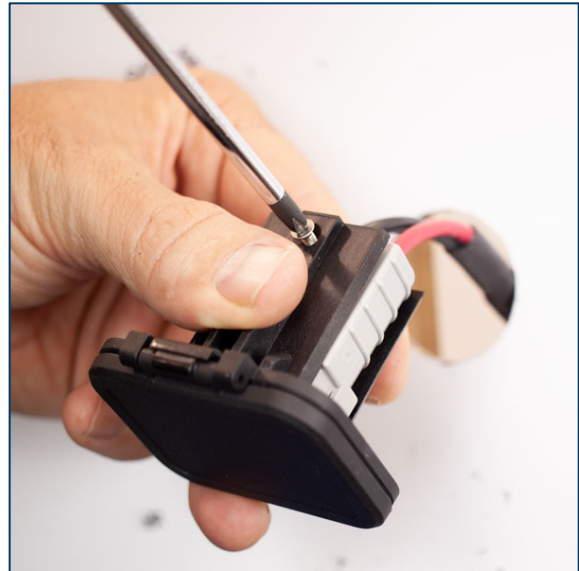


3 Pull the Anderson lead out through the 38.1mm hole so it can be installed in the mount.

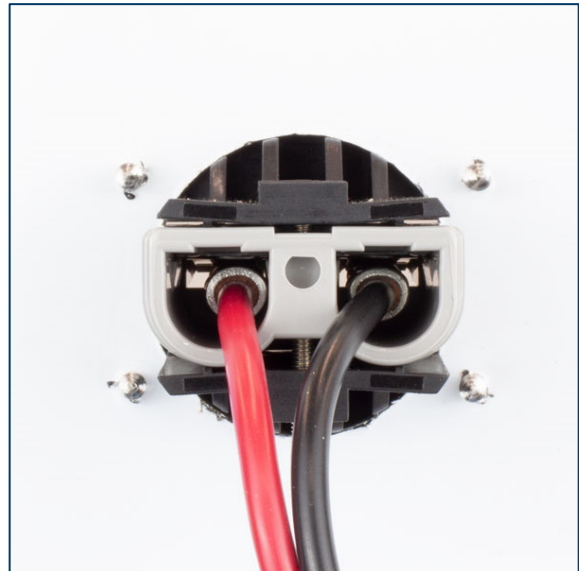


4

Secure the plug into the mount with the supplied screws and Nyloc nuts. Install the Anderson plug so that the 'shark fin' sits in the valley of the mount. This orientation ensures that when a connector is plugged into the mounted Anderson, it is facing upward.



NOTE When the screws are tightened correctly, the mount will compress around the plug housing as shown here to eliminate sideways movement.



5

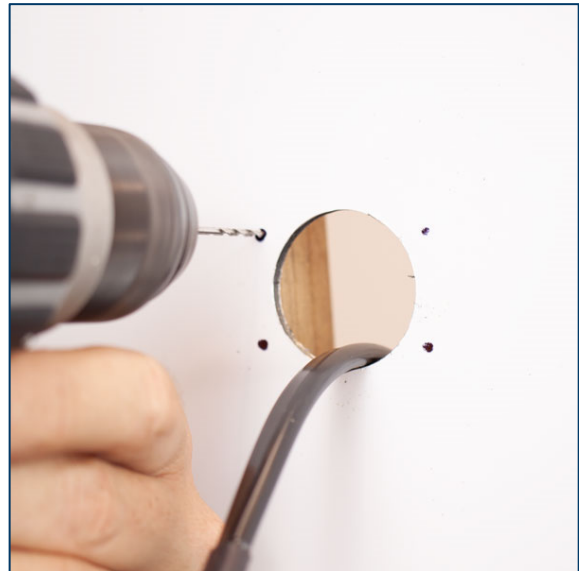
Insert the mount and clock it to your desired orientation.



- 6** Mark the position of the four flange fasteners with a permanent marker and remove the mount from the panel.



- 7** Drill the outer holes to suit your choice of fastener.



- 8** Push the mount into the panel and fasten in place.

The mount is now ready for use.

