

# LMD2500 LONG BELT FINISHING MACHINE



## OVERVIEW:

The LMD2500 is a long belt machine with a flexible abrasive belt that enables flat surface finishing, as well as the corners or the edges of the workpiece.

This machine is ideal for polishing irregular shapes, weld removal and laser-cut parts deburring and edge rounding.

The flexible and adjustable table is especially useful when the part is too large to be moved by hand. With the LMD2500 you move the table by motor and use the adaptability of the long belt together with several grinding tools to finish the areas you need.

## TECHNICAL DATA:

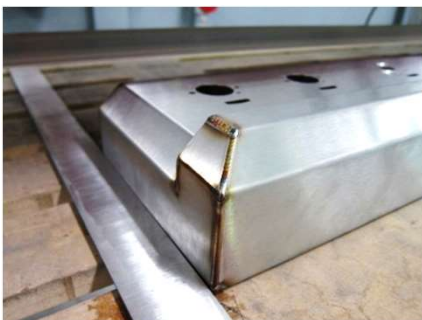
Working capacity (mm)	2500x850x700
Loading capacity (kg)	200
Abrasive belt dimensions (mm)	7800x120
Abrasive belt motor (kW)	4
Table motor (kW)	0.37
Consumption (A)	9
Dimensions (mm)	4000x1600x2000
Weight (kg)	920

## STANDARD EQUIPMENT:

- Flat grinding tool
- Contact roller tool
- Motorized height adjustment
- Manual grinding pad

## AVAILABLE ACCESSORIES:

- Double speed or variable speed for abrasive belt
- Pneumatic abrasive belt tensioning
- Deburring and edge rounding tool



Weld grinding and polishing of welded boxes



Interchangeable contact roller and flat grinding tool



Flexible deburring and edge rounding station