



SPECS

| FRAME | |
|-----------------|--|
| SIZES | MD / LG /XL |
| COLOUR | DARK GREY |
| FRAME | SERIES 3 CUSTOM BUTTED AND HYDROFORMED 6013 / OPTIMISED FACTORY RACING SIZING / 211mm TRAVEL |
| FORK | RECOMMENDED TRAVEL - 200mm |
| REAR-SHOCK | FOX DHX2 FACTORY |
| HEADSET | CUSTOM SARACEN HEADSET / 0mm OFFSET INSTALLED / 5mm OFFSET INCLUDED |
| COMPONENTS | |
| HANDLEBARS | N/A |
| STEM | N/A |
| GRIPS | ODI ELITE MOTION |
| SADDLE | N/A |
| SEATPOST | N/A |
| PEDALS | N/A |
| DRIVE TRAIN | |
| SHIFTERS | N/A |
| REAR-DERAILLEUR | N/A |
| CHAIN DEVICE | N/A |
| CHAINSET | N/A |
| CHAIN | N/A |
| CASSETTE | N/A |
| BRAKES | N/A |
| BRAKE-LEVERS | N/A |
| WHEELS | |
| RIMS | N/A |
| HUBS | KT 12X157 SEALED BEARING 32H REAR |
| SPOKES | N/A |
| TYRES | N/A |

FEATURES

- Series 3 custom butted and hydroformed 6013 alloy / integrated fork bump-stops, 12 x 157mm rear axle, 211mm travel , signature TRL suspension design, custom headtube with adjustable front centre plus-minus 5mm
- routing, integrated fork bump-stops, 12 x 157mm rear axle,
- Shock: Fox DHX2 Factory, LSC HSC LSR HSR Adjust, SLS Spring, 250 x 75
- Supplied with rear hub, two headset and grips

GEOMETRY

| SIZE | 455 | 485 | 505 |
|--------------------------|------|------|------|
| REACH (mm) | 455 | 485 | 505 |
| STACK (mm) | 615 | 624 | 633 |
| HEAD TUBE (mm) | 90 | 100 | 110 |
| CHAIN STAY (mm) | 450 | 450 | 450 |
| BB DROP (mm) | 9 | 9 | 9 |
| HEAD ANGLE (°) | 63 | 63 | 63 |
| SEAT TUBE (mm) | 410 | 410 | 410 |
| SEAT ANGLE EFFECTIVE (°) | 76.5 | 76.5 | 76.5 |
| SEAT ANGLE ACTUAL (°) | 66 | 66 | 66 |

The image above is for illustration purposes only. Saracen reserves the right to change spec, colour, features and price without prior warning.

MYST X

TECHNICAL INFORMATION

SARACEN

| MODEL | MYST X |
|-------------------------------|-------------------------|
| FRAME MATERIAL | AL-6013 |
| REAR TRAVEL | 211mm |
| SHOCK LENGTH / STROKE | 250mm X 75mm |
| SHOCK SAG | 19.5mm |
| SAG EYE TO EYE | 221mm |
| PIGGY BACK COMPATIBLE | YES |
| FRAME SHOCK BUSHING | 22mm X 8mm |
| LINKAGE SHOCK BUSHING | 22mm X 8mm |
| RECOMMENDED / MAX FORK LENGTH | 601mm/ +20mm |
| OFFSET | 50-58mm |
| RECOMMENDED / MAX FORK TRAVEL | 29": DC 200mm |
| MAXIMUM TYRE | 29" X 2.5" 27.5" X 2.5" |
| BRAKE MOUNT TYPE | POST MOUNT |
| MAX REAR ROTOR | 200mm |
| SEAT POST | 30.9mm |
| SEAT COLLAR | 34.9mm |
| BOTTOM BRACKET TYPE | BSA83 |
| ISCG | 05 |
| CRANK CHAINLINE | SUPER BOOST |
| MAX CHAIN RING | 38T |
| REAR HUB TYPE | 12 X 157 |



FOX SUSPENSION

SETUP GUIDE

SPRING FITTED: MD 450lbs / LG 500lbs / XL 525lbs

REAR SHOCK // Fox DHX2 Factory

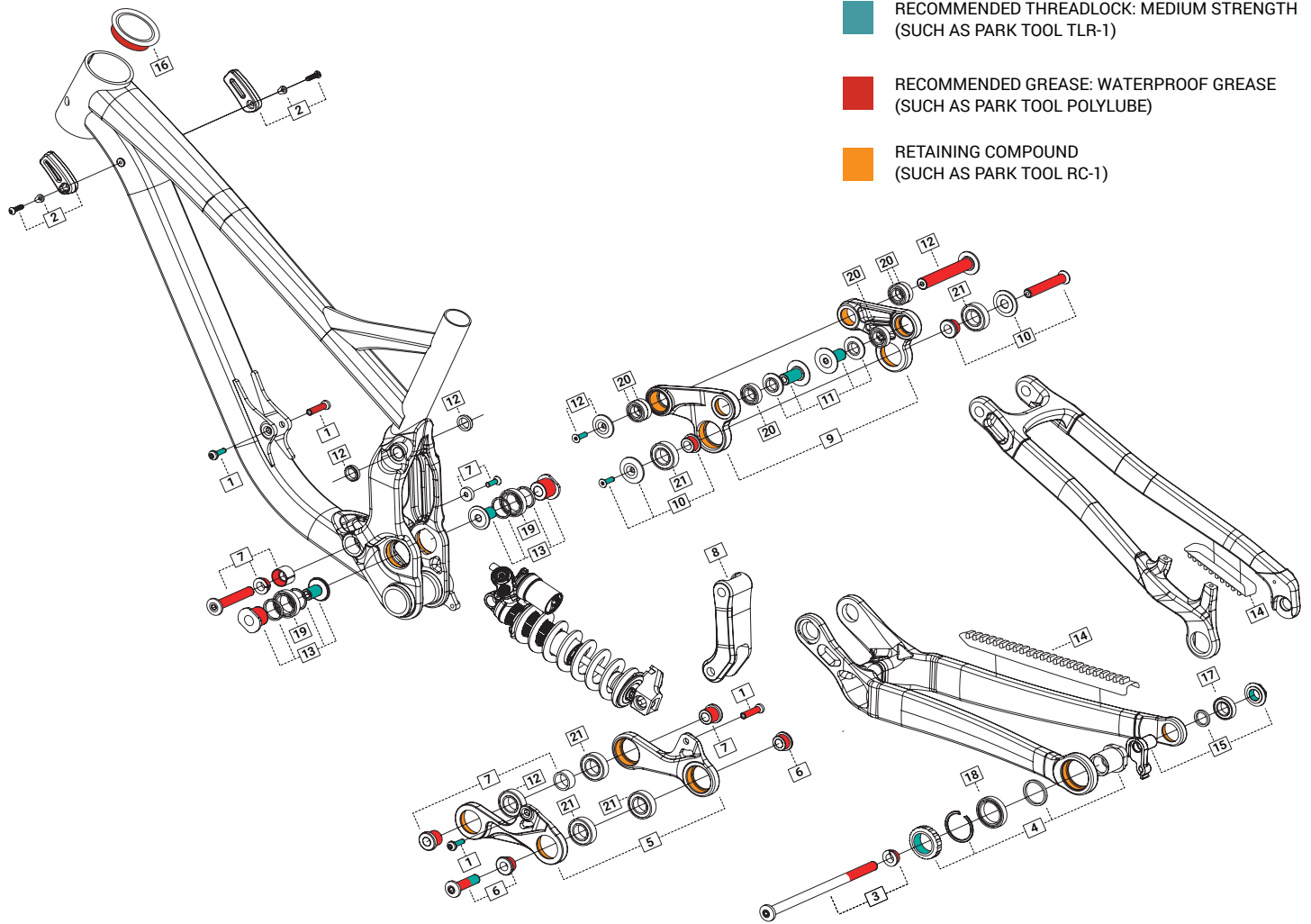
[CLICK FOR
SUSPENSION
SET-UP GUIDE](#)

The image above is for illustration purposes only. Saracen reserves the right to change spec, colour, features and price without prior warning.

MYST X

EXPLODED DRAWING

SARACEN



| ITEM | PART NUMBER | DESCRIPTION | TORQUE | NOTES |
|------|-------------|---|--------|-----------------------|
| 1 | RNSPR50008 | MYST PT FRONT SHOCK BOLT | 9Nm | |
| 2 | RNSPR50043 | MYST PT FORK BUMPERS (PAIR) | 5Nm | |
| 3 | RNSPR50044 | MYST PT REAR AXLE AND WASHER 157mm | 15Nm | |
| 4 | RNSPR50045 | MYST PT REAR AXLE DISC SIDE DROPOUT KIT | 35Nm | |
| 5 | RNSPR50046 | MYST PT PUSH LINKAGES PAIR | - | |
| 6 | RNSPR50047 | MYST PT PUSH LINKAGE REAR BOLT AND WASHER SET | 15Nm | |
| 7 | RNSPR50048 | MYST PT PUSH LINKAGE FRONT BOLT AND WASHER SET | 9Nm | |
| 8 | RNSPR50049 | MYST PT PULL-LINKAGE | - | |
| 9 | RNSPR50050 | MYST PT SWING LINKAGE PAIR | - | |
| 10 | RNSPR50051 | MYST PT SWING LINK TO PULL-LINK BOLT AND WASHER SET | 9Nm | |
| 11 | RNSPR50052 | MYST PT SWING LINK TO SWINGARM BOLT AND WASHER SET | 24Nm | |
| 12 | RNSPR50053 | MYST PT SWING LINK TO FT BOLT AND WASHER SET | 9Nm | |
| 13 | RNSPR50054 | MYST PT MAIN PIVOT BOLT AND WASHER SET | 15Nm | |
| 14 | RNSPR50062 | MYST PT CHAINSTAY PROTECTOR KIT | - | |
| 15 | RNS4057 | MYST PT HANGER 38 | 20Nm | |
| 16 | RNS5221 | MYST HEADSET 0mm OFFSET | - | |
| 16 | RNS5222 | MYST HEADSET 5mm OFFSET | - | |
| 17 | - | 6903 BEARING | - | X1 BEARINGS PER FRAME |
| 18 | - | 6806 BEARING | - | X1 BEARINGS PER FRAME |
| 19 | - | 6805 BEARING | - | X2 BEARINGS PER FRAME |
| 20 | - | 6902 BEARING | - | X6 BEARINGS PER FRAME |
| 21 | - | 6904 BEARING | - | X6 BEARINGS PER FRAME |

PLEASE NOTE BEARINGS ARE NOT AVAILABLE THROUGH SARACEN. ALL BEARINGS ARE A STANDARD PART AND ARE AVAILABLE THROUGH ALL GOOD BEARING SUPPLIERS.