



## SPECS

FRAME	
SIZES	MD / LG / XL
COLOUR	MATT SILVER
FRAME	SERIES 3 CUSTOM BUTTED AND HYDROFORMED 6013 / OPTIMISED FACTORY RACING SIZING / 211mm TRAVEL
FORK	FOX 40 FLOAT FACTORY / KASHIMA / 200mm TRAVEL
REAR-SHOCK	FOX DHX2 FACTORY
HEADSET	CUSTOM SARACEN HEADSET / 0mm OFFSET INSTALLED / 5mm OFFSET INCLUDED
COMPONENTS	
HANDLEBARS	RACEFACE ATLAS / 820mm / 35mm
STEM	RACEFACE CHESTER / 50mm / DIRECT MOUNT
GRIPS	ODI ELITE MOTION
SADDLE	SARACEN CUSTOM DH CRMO MTB
SEATPOST	RACEFACE CHESTER / 30.9mm / 350mm
DRIVE TRAIN	
SHIFTERS	SHIMANO SAINT SL-M820 / RAPIDFIRE PLUS / 1X10 SPEED
REAR-DERAILLEUR	SHIMANO SAINT M820 SHADOW PLUS / 10 SPEED
CHAIN DEVICE	SHIMANO SAINT SM-CD50 / 36T / ISCG-05
CHAINSET	SHIMANO SAINT FC-M825 36T / 165mm
CHAIN	SHIMANO HG54
CASSETTE	SHIMANO DEORE CS-HG500 / 10 SPEED / 11-25T
BRAKES	SHIMANO M820 203/203mm
BRAKE-LEVERS	SHIMANO M820
WHEELS	
RIMS	DT SWISS FR541 / 32H / 29" / 27.5"
HUBS	KT BOOST 20 X 110 SEALED BEARINGS 32H FRONT / KT 12 X 157 SEALED BEARING 32H REAR
SPOKES	DOUBLE-BUTTED STAINLESS STEEL
TYRES	MINION DHRII / 3C MAXXGRIP / DH / TR / 29/27.5" X 2.5

## FEATURES

- Series 3 custom butted and hydroformed 6013 alloy / integrated fork bump-stops, 12 x 157mm rear axle, 211mm travel
- Shock: Fox DHX2 Factory, LSC HSC LSR HSR Adjust, SLS Spring, 250 x 75
- Fork: Fox 40 Float Factory, Kashima, 200mm travel, HSC LSC HSR LSR adjust, 20TA x110 DH
- Drivetrain: Shimano Saint M820 10 Speed, 11-25T, Shimano Saint chain device
- Brakes: Shimano M820 calipers with M820 Saint levers
- Components: Raceface bar and direct mount stem, ODI grips,
- Tubeless ready

## GEOMETRY

SIZE	455	485	505
REACH (mm)	455	485	505
STACK (mm)	615	624	633
HEAD TUBE (mm)	90	100	110
CHAIN STAY (mm)	450	450	450
BB DROP (mm)	9	9	9
HEAD ANGLE (°)	63	63	63
SEAT TUBE (mm)	410	410	410
SEAT ANGLE EFFECTIVE (°)	76.5	76.5	76.5
SEAT ANGLE ACTUAL (°)	66	66	66

The image above is for illustration purposes only. Saracen reserves the right to change spec, colour, features and price without prior warning.

MODEL	MYST TEAM
FRAME MATERIAL	AL-6013
REAR TRAVEL	211mm
SHOCK LENGTH / STROKE	250mm X 75mm
SHOCK SAG	19.5mm
SAG EYE TO EYE	221mm
PIGGY BACK COMPATIBLE	YES
FRAME SHOCK BUSHING	22mm X 8mm
LINKAGE SHOCK BUSHING	22mm X 8mm
RECOMMENDED / MAX FORK LENGTH	601mm/ +20mm
OFFSET	50-58mm
RECOMMENDED / MAX FORK TRAVEL	29": DC 200mm
MAXIMUM TYRE	29" X 2.5" 27.5" X 2.5"
BRAKE MOUNT TYPE	POST MOUNT
MAX REAR ROTOR	200mm
SEAT POST	30.9mm
SEAT COLLAR	34.9mm
BOTTOM BRACKET TYPE	BSA83
ISCG	05
CRANK CHAINLINE	SUPER BOOST
MAX CHAIN RING	38T
REAR HUB TYPE	12 X 157



## FOX SUSPENSION

### SETUP GUIDE

SPRING FITTED: MD 450lbs / LG 500lbs / XL 525lbs

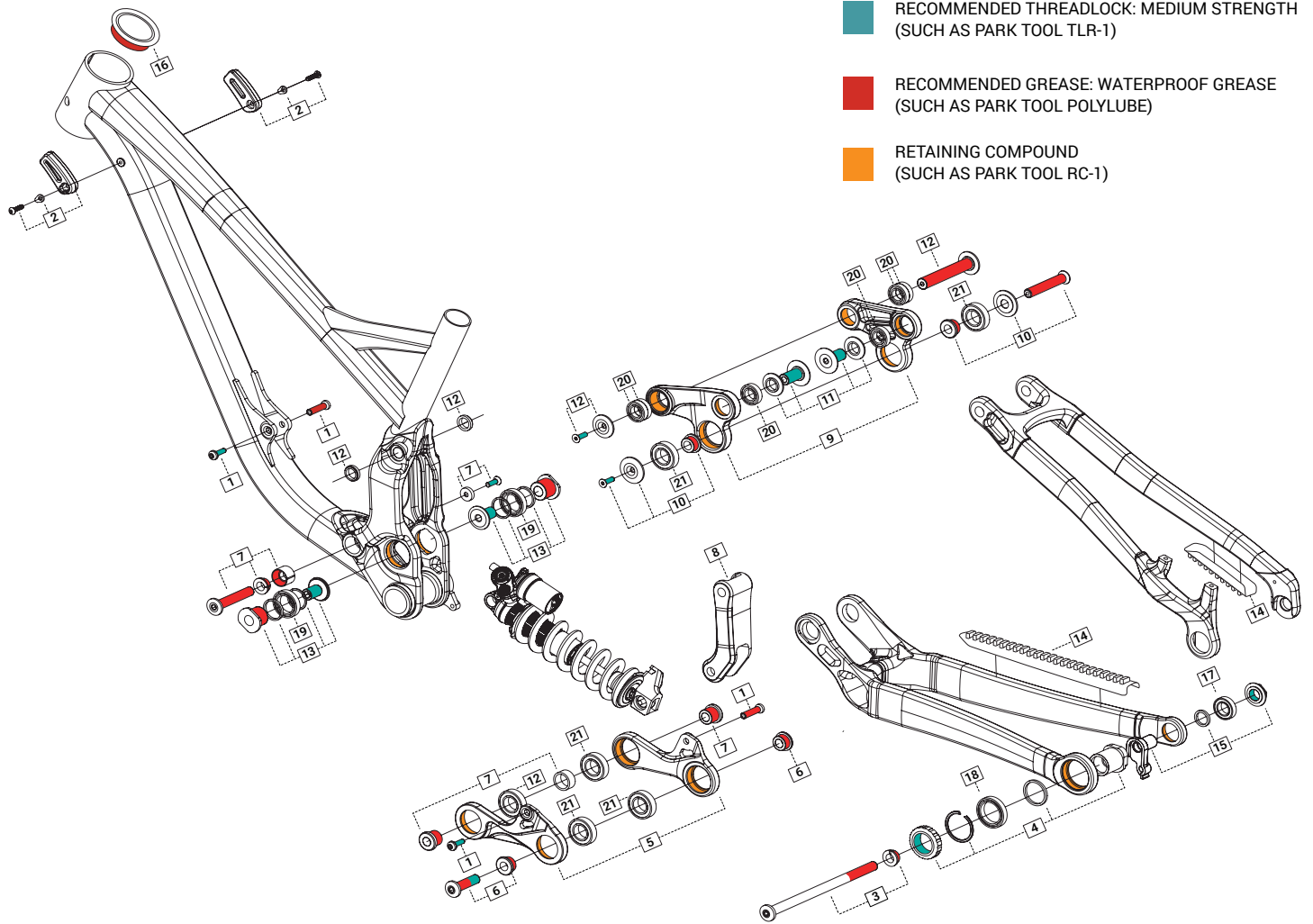
**REAR SHOCK** // Fox DHX2 Factory

—

**FORK** // Fox 40 Float Factory

CLICK FOR  
SUSPENSION  
SET-UP GUIDE

The image above is for illustration purposes only. Saracen reserves the right to change spec, colour, features and price without prior warning.



ITEM	PART NUMBER	DESCRIPTION	TORQUE	NOTES
1	RNSPR50008	MYST PT FRONT SHOCK BOLT	9Nm	
2	RNSPR50043	MYST PT FORK BUMPERS (PAIR)	5Nm	
3	RNSPR50044	MYST PT REAR AXLE AND WASHER 157mm	15Nm	
4	RNSPR50045	MYST PT REAR AXLE DISC SIDE DROPOUT KIT	35Nm	
5	RNSPR50046	MYST PT PUSH LINKAGES PAIR	-	
6	RNSPR50047	MYST PT PUSH LINKAGE REAR BOLT AND WASHER SET	15Nm	
7	RNSPR50048	MYST PT PUSH LINKAGE FRONT BOLT AND WASHER SET	9Nm	
8	RNSPR50049	MYST PT PULL-LINKAGE	-	
9	RNSPR50050	MYST PT SWING LINKAGE PAIR	-	
10	RNSPR50051	MYST PT SWING LINK TO PULL-LINK BOLT AND WASHER SET	9Nm	
11	RNSPR50052	MYST PT SWING LINK TO SWINGARM BOLT AND WASHER SET	24Nm	
12	RNSPR50053	MYST PT SWING LINK TO FT BOLT AND WASHER SET	9Nm	
13	RNSPR50054	MYST PT MAIN PIVOT BOLT AND WASHER SET	15Nm	
14	RNSPR50062	MYST PT CHAINSTAY PROTECTOR KIT	-	
15	RNS4057	MYST PT HANGER 38	20Nm	
16	RNS5221	MYST HEADSET 0mm OFFSET	-	
16	RNS5222	MYST HEADSET 5mm OFFSET	-	
17	-	6903 BEARING	-	X1 BEARINGS PER FRAME
18	-	6806 BEARING	-	X1 BEARINGS PER FRAME
19	-	6805 BEARING	-	X2 BEARINGS PER FRAME
20	-	6902 BEARING	-	X6 BEARINGS PER FRAME
21	-	6904 BEARING	-	X6 BEARINGS PER FRAME

PLEASE NOTE BEARINGS ARE NOT AVAILABLE THROUGH SARACEN. ALL BEARINGS ARE A STANDARD PART AND ARE AVAILABLE THROUGH ALL GOOD BEARING SUPPLIERS.