



SPECS

FRAME	
SIZES	MD / LG / XL
COLOUR	BLUE
FRAME	SERIES 3 CUSTOM BUTTED AND HYDROFORMED 6013 ALLOY / OPTIMISED FACTORY RACING SIZING / 211mm TRAVEL
FORK	ROCKSHOX BOXXER SELECT RC / 200mm TRAVEL
REAR-SHOCK	MARZOOCHI BOMBER CR
HEADSET	CUSTOM SARACEN HEADSET / 0mm OFFSET INSTALLED / 5mm OFFSET INCLUDED
COMPONENTS	
HANDLEBARS	RACEFACE CHESTER / 780mm WIDE / 35mm
STEM	RACEFACE CHESTER 35 / DIRECT MOUNT
GRIPS	ODI ELITE MOTION
SADDLE	SARACEN CUSTOM DH CRMO MTB
SEATPOST	RACEFACE CHESTER / 30.9mm / 325mm
DRIVE TRAIN	
SHIFTERS	SRAM GX DH 7-SPEED
REAR-DERAILLEUR	SRAM GX DH 7-SPEED
CHAIN DEVICE	MRP G4 CS
CHAINSET	SRAM DESCENDANT DH 34T / 165mm
CHAIN	KMC X11
CASSETTE	SRAM PG720 DH 7-SPEED
BRAKES	SHIMANO M520 203/203mm
BRAKE-LEVERS	SHIMANO MT501
WHEELS	
RIMS	RACEFACE ARC / 32H / 29" / 27.5"
HUBS	FORMULA BOOST 20 X 110 SEALED BEARING 32H FRONT / KT 12 X 157 SEALED BEARING 32H REAR
SPOKES	DOUBLE-BUTTED STAINLESS STEEL
TYRES	MAXXIS DHRII / MAXXGRIP / DH / TR / 29 / 27.5 X 2.4"

FEATURES

- Series 3 custom butted and hydroformed 6013 alloy / integrated fork bump-stops, 12 x 157mm rear axle, 211mm travel
- Shock: Marzocchi Bomber CR, 250 x 75
- Fork: Rockshox BoXXer Select RC, 200mm travel, DebonAir, 20 x 110, Maxle Stealth DH
- Drivetrain: Sram GX DH 7 Speed, 11-25T, MRP G4 CS chain device
- Brakes: Shimano M520 calipers with MT501 levers
- Components: Raceface Chester 35 bar and direct mount stem, ODI grips, Raceface seatpost
- Tubeless ready

GEOMETRY

SIZE	455	485	505
REACH (mm)	455	485	505
STACK (mm)	615	624	633
HEAD TUBE (mm)	90	100	110
CHAIN STAY (mm)	450	450	450
BB DROP (mm)	9	9	9
HEAD ANGLE (°)	63	63	63
SEAT TUBE (mm)	410	410	410
SEAT ANGLE EFFECTIVE (°)	76.5	76.5	76.5
SEAT ANGLE ACTUAL (°)	66	66	66

The image above is for illustration purposes only. Saracen reserves the right to change spec, colour, features and price without prior warning.

MYST PRO

TECHNICAL INFORMATION

SARACEN

MODEL	MYST PRO
FRAME MATERIAL	AL-6013
REAR TRAVEL	211 mm
SHOCK LENGTH / STROKE	250mm X 75mm
SHOCK SAG	19.5mm
SAG EYE TO EYE	221mm
PIGGY BACK COMPATIBLE	YES
FRAME SHOCK BUSHING	22mm X 8mm
LINKAGE SHOCK BUSHING	22mm X 8mm
RECOMMENDED / MAX FORK LENGTH	601mm / +20mm
OFFSET	50-58mm
RECOMMENDED / MAX FORK TRAVEL	29": DC 200mm
MAXIMUM TYRE	27.5" X 2.5" / 29" X 2.5"
BRAKE MOUNT TYPE	POST MOUNT
MAX REAR ROTOR	200mm
SEAT POST	30.9mm
SEAT COLLAR	34.9mm
BOTTOM BRACKET TYPE	BSA83
ISCG	05
CRANK CHAINLINE	SUPER BOOST
MAX CHAIN RING	38T
REAR HUB TYPE	12 X 157



MARZOCCHI SUSPENSION

SETUP GUIDE

SPRING FITTED: MD 450lbs / LG 500lbs / XL 550lbs

REAR SHOCK // Marzocchi Bomber CR

FORK // Rockshox BoXXer Select RC

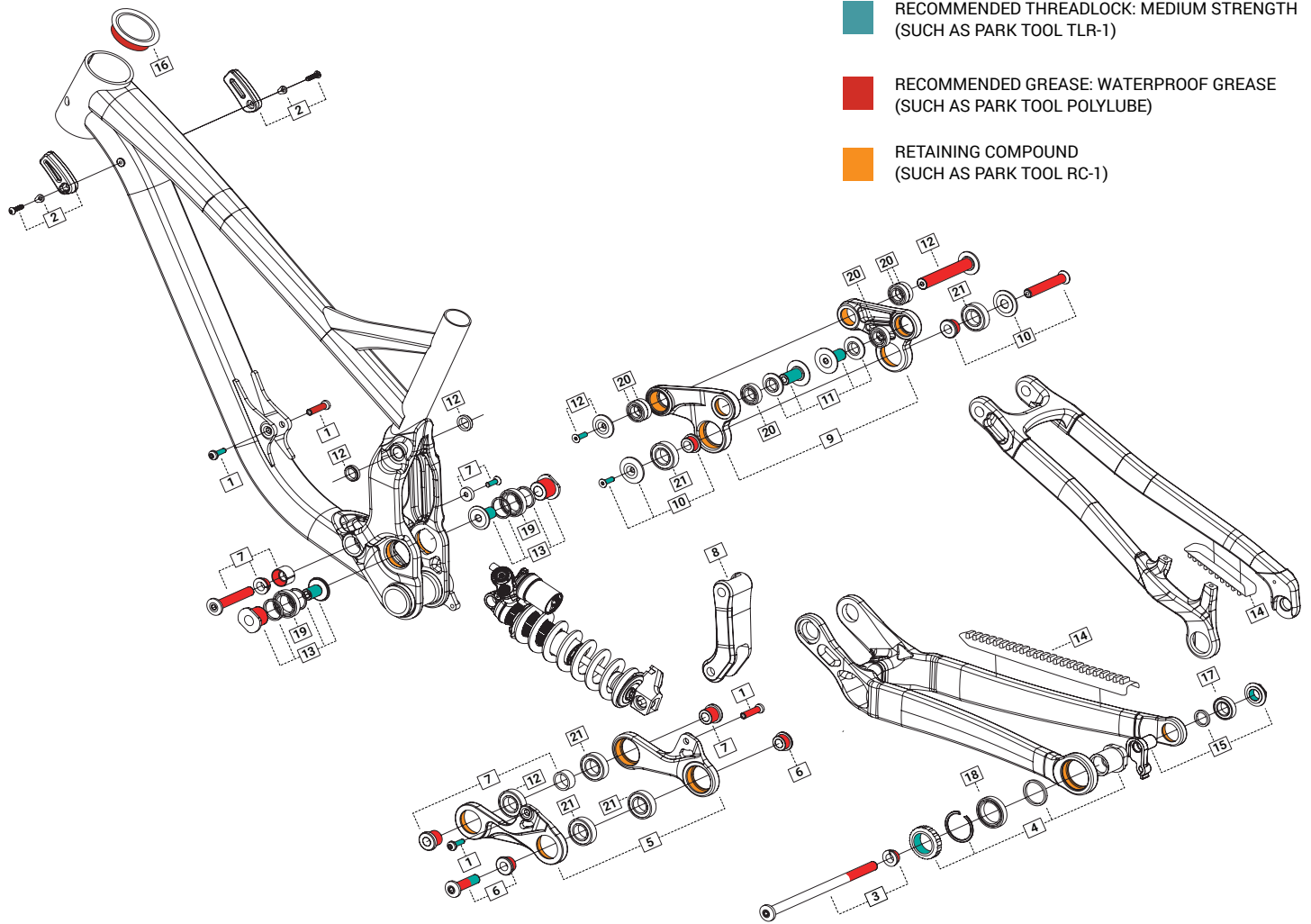
CLICK FOR
SUSPENSION
SET-UP GUIDE

The image above is for illustration purposes only. Saracen reserves the right to change spec, colour, features and price without prior warning.

MYST PRO

EXPLODED DRAWING

SARACEN



■ RECOMMENDED THREADLOCK: MEDIUM STRENGTH (SUCH AS PARK TOOL TLR-1)

■ RECOMMENDED GREASE: WATERPROOF GREASE (SUCH AS PARK TOOL POLYLUBE)

■ RETAINING COMPOUND (SUCH AS PARK TOOL RC-1)

ITEM	PART NUMBER	DESCRIPTION	TORQUE	NOTES
1	RNSPR50008	MYST PT FRONT SHOCK BOLT	9Nm	
2	RNSPR50043	MYST PT FORK BUMPERS (PAIR)	5Nm	
3	RNSPR50044	MYST PT REAR AXLE AND WASHER 157mm	15Nm	
4	RNSPR50045	MYST PT REAR AXLE DISC SIDE DROPOUT KIT	35Nm	
5	RNSPR50046	MYST PT PUSH LINKAGES PAIR	-	
6	RNSPR50047	MYST PT PUSH LINKAGE REAR BOLT AND WASHER SET	15Nm	
7	RNSPR50048	MYST PT PUSH LINKAGE FRONT BOLT AND WASHER SET	9Nm	
8	RNSPR50049	MYST PT PULL-LINKAGE	-	
9	RNSPR50050	MYST PT SWING LINKAGE PAIR	-	
10	RNSPR50051	MYST PT SWING LINK TO PULL-LINK BOLT AND WASHER SET	9Nm	
11	RNSPR50052	MYST PT SWING LINK TO SWINGARM BOLT AND WASHER SET	24Nm	
12	RNSPR50053	MYST PT SWING LINK TO FT BOLT AND WASHER SET	9Nm	
13	RNSPR50054	MYST PT MAIN PIVOT BOLT AND WASHER SET	15Nm	
14	RNSPR50062	MYST PT CHAINSTAY PROTECTOR KIT	-	
15	RNS4057	MYST PT HANGER 38	20Nm	
16	RNS5221	MYST HEADSET 0mm OFFSET	-	
16	RNS5222	MYST HEADSET 5mm OFFSET	-	
17	-	6903 BEARING	-	X1 BEARINGS PER FRAME
18	-	6806 BEARING	-	X1 BEARINGS PER FRAME
19	-	6805 BEARING	-	X2 BEARINGS PER FRAME
20	-	6902 BEARING	-	X6 BEARINGS PER FRAME
21	-	6904 BEARING	-	X6 BEARINGS PER FRAME

PLEASE NOTE BEARINGS ARE NOT AVAILABLE THROUGH SARACEN. ALL BEARINGS ARE A STANDARD PART AND ARE AVAILABLE THROUGH ALL GOOD BEARING SUPPLIERS.