



SPECS

FRAME	
SIZES	ONE
COLOUR	BLACK
FRAME	SERIES 3 CUSTOM BUTTED AND HYDROFORMED 6013 ALLOY FRONT TRIANGLE AND SWINGARM / 120MM TRAVEL
FORK	X-FUSION VELVET RL2 / 120MM TRAVEL
REAR-SHOCK	X-FUSION 02 PRO R
HEADSET	PRESTINE PTF13
COMPONENTS	
HANDLEBARS	RACEFACE RIDE / 740MM / 31.8MM
STEM	SARACEN CUSTOM / 45MM
GRIPS	ODI ELITE MOTION
SADDLE	SARACEN CUSTOM CRMO MTB
SEATPOST	RACEFACE CHESTER / 30.9MM / 325MM
PEDALS	ALLOY MTB
DRIVE TRAIN	
SHIFTERS	SRAM GX-E / 1 X 11 SPEED
REAR-DERAILLEUR	SRAM NX / 11 SPEED
FRONT-DERAILLEUR	N/A
CHAINSET	SRAM NX 1X X-SYNC / 30T
CHAIN	SRAM PC 1110
CASSETTE	SRAM POWERGLIDE 1130 / 11-42T
BRAKES	SHIMANO M6100 180/180MM
BRAKE-LEVERS	SHIMANO M6100
WHEELS	
RIMS	JALCO / 32H / 24"
HUBS	PROMAX 15X100 SEALED BEARING 32H FRONT / PROMAX 12X142 S SEALED BEARING 32H REAR
SPOKES	DOUBLE-BUTTED STAINLESS STEEL
TYRES	MAXXIS MINION DHRII / 24 X 2.3

FEATURES

- Series 3 custom butted and hydroformed 6013 alloy front triangle and swingarm, signature TRL suspension design, internal cable routing, 12 x 142mm, 120mm travel
- Shock: X-Fusion 02 PRO, Rebound adjust, 190 x 40
- Fork: X-Fusion Velvet RL2, 120mm travel, Rebound adjust, Lockout, RL2 Damper, 41mm Rake
- Drivetrain: Sram NX 11 Speed, 11-42T
- Brakes: Shimano M6100 calipers with M6100 Deore levers
- Components: Raceface Ride bar and Saracen junior stem, ODI grips, Raceface Chester seatpost
- Tubeless ready

GEOMETRY

SIZE	ONE
SEAT TUBE (MM)	315
TOP TUBE (MM)	502
REACH (MM)	360
STACK (MM)	530
HEAD TUBE (MM)	95
HEAD ANGLE (°)	65
SEAT ANGLE (°)	-
BOTTOM BRACKET TO SADDLE (MM)	-
EFFECTIVE SEAT ANGLE (°)	-
ACTUAL SEAT ANGLE (°)	68.6
CHAINSTAY (MM)	385
BOTTOM BRACKET DROP (MM)	5
BOTTOM BRACKET (MM)	313
WHEELBASE (MM)	1034
HEAD SET	ZS44/ZS56
LOWER STACK HEIGHT (MM)	2.9
AXLE TO CROWN (MM)	500
OFFSET (MM)	40
STANDOVER (MM)	687

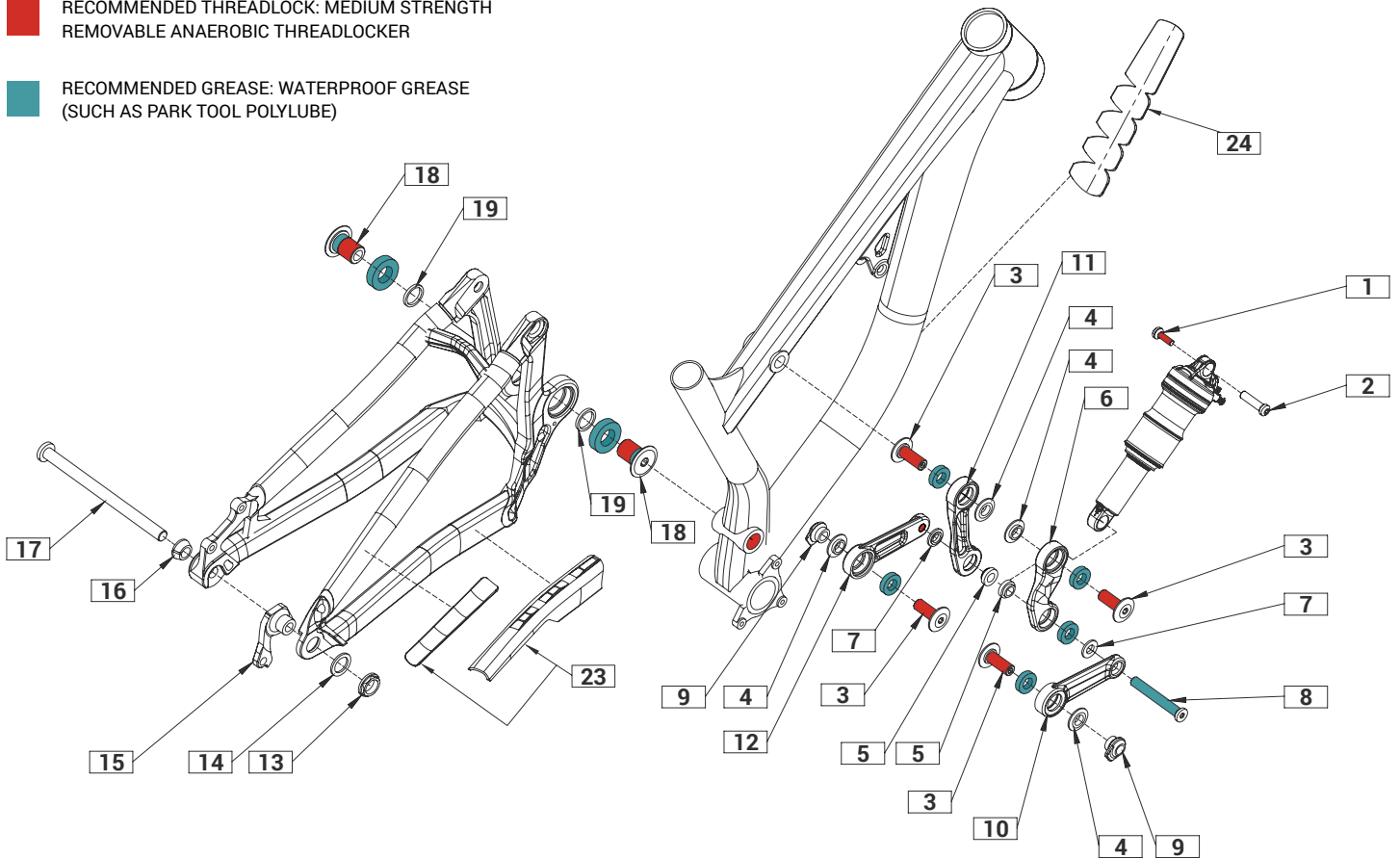
The image above is for illustration purposes only. Saracen reserves the right to change spec, colour, features and price without prior warning.

ARIEL JUNIOR

EXPLODED DRAWING

■ RECOMMENDED THREADLOCK: MEDIUM STRENGTH
REMOVABLE ANAEROBIC THREADLOCKER

■ RECOMMENDED GREASE: WATERPROOF GREASE
(SUCH AS PARK TOOL POLYLUBE)



ITEM	PART NUMBER	DESCRIPTION	QTY NEEDED	TORQUE	NOTES
1 & 2	RNSPR50008	ARIEL UPPER SHOCK BOLT	1	9NM	PART NUMBER INCLUDES ITEM 1 & 2
3	RNSPR50006	ARIEL LINKAGE AXLE (PAIR)	4	15NM	-
4	RNSPR50007	ARIEL LINKAGE SPACER (PAIR)	4	-	-
5	RNSPR50005	ARIEL INNER SHOCK SPACERS (PAIR)	2	-	-
6 & 11	RNSPR50002	ARIEL ROCKER LINK ARMS (PAIR)	1	-	PART NUMBER INCLUDES ITEM 6 & 11
7	RNSPR50004	ARIEL OUTER SHOCK SPACERS (PAIR)	2	-	-
8	RNSPR50003	ARIEL LOWER SHOCK BOLT	1	10NM	-
9	RNSPR50009	ARIEL SWING ARM THREADED INSERT (PAIR)	2	-	-
10 & 12	RNSPR50001	ARIEL PUSH LINK (PAIR)	1	-	PART NUMBER INCLUDES ITEM 10 & 12
13 & 15	RNS4049	ARIEL NON-DIRECT HANGER + NUT	1	20NM	PART NUMBER INCLUDES ITEM 13 & 15
13 & 15	RNS4047	ARIEL DIRECT HANGER + NUT	1	20NM	PART NUMBER INCLUDES ITEM 13 & 15
14	RNSPR50010	ARIEL HANGER WASHER	1	-	-
16	RNSPR50011	ARIEL AXLE TAPER WASHER	1	-	-
17	RNSPR50013	ARIEL 142 REAR AXLE	1	15NM	-
18 & 19	RNS5224	ARIEL MAIN AXLE BOLTS + SPACERS (PAIR)	2	36NM	PART NUMBER INCLUDES ITEM 18 & 19
20	N/A	ARIEL LINKAGE BEARINGS 6901.RS	4	-	-
21	N/A	ARIEL MAIN PIVOT BEARINGS 6904.RS	2	-	-
22	N/A	ARIEL LINKAGE BEARINGS 6900.RS	2	-	-
23	RNSPR50016	ARIEL CHAINSTAY PROTECTOR	1	-	-
24	RNSPR50020	ARIEL DOWNTUBE PROTECTOR	1	-	-

ARIEL JUNIOR

TECHNICAL INFORMATION

SARACEN

MODEL	ARIEL JUNIOR
FRAME MATERIAL	AL-6013
REAR TRAVEL	120MM
SHOCK LENGTH / STROKE	190MM X 45MM
SHOCK SAG	12MM - 13.5MM
SAG EYE TO EYE	178 - 176.5MM
PIGGY BACK COMPATIBLE	YES
FRAME SHOCK BUSHING	22MM X 8MM
LINKAGE SHOCK BUSHING	22MM X 10MM
RECOMMENDED / MAX FORK LENGTH	500MM / 520 MM
OFFSET	40MM
RECOMMENDED / MAX FORK TRAVEL	26": 120MM
MAXIMUM TYRE	24" X 2.5"
BRAKE MOUNT TYPE	IS160
MAX REAR ROTOR	200MM
SEAT POST	30.9MM
SEAT COLLAR	34.9MM
BOTTOM BRACKET TYPE	BSA73
ISCG	05
CRANK CHAINLINE	STANDARD
MAX CHAIN RING	34T
REAR HUB TYPE	12 X 142



X-FUSION SUSPENSION

SETUP GUIDE

X-Fusion 02 Pro / 195mm x 45mm

RIDER WEIGHT (LBS)	RIDER WEIGHT (KGS)	PRESSURE (PSI)	SAG (%)	SAG (MM)
50	23	60	25-30%	11-13MM
70	32	80	25-30%	11-13MM
90	41	105	25-30%	11-13MM
110	50	130	25-30%	11-13MM
130	59	160	25-30%	11-13MM
190	86	235	25-30%	16-19MM
210	95	260	25-30%	16-19MM
230	104	290	25-30%	16-19MM

NOTE: ALL CLICKS ARE FROM FULLY CLOSED POSITION

The image above is for illustration purposes only. Saracen reserves the right to change spec, colour, features and price without prior warning.