



## SPECS

| FRAME            |   |
|------------------|---|
| SIZES            | SM / MD / LG / XL   |
| COLOUR           | BLUE  |
| FRAME            | SERIES 3 CUSTOM BUTTED AND HYDROFORMED 6013 ALLOY FRONT TRIANGLE AND SWINGARM / 130MM TRAVEL                              |
| FORK             | MARZOCCHI BOMBER Z2 / 130MM TRAVEL  |
| REAR-SHOCK       | FOX FLOAT DPS PERFORMANCE   |
| HEADSET          | PRESTINE PTF13  |
| COMPONENTS       |   |
| HANDLEBARS       | RACEFACE CHESTER 35 / 780MM / 35MM  |
| STEM             | RACEFACE AEFFECT 35 / 50MM  |
| GRIPS            | ODI ELITE MOTION  |
| SADDLE           | SARACEN CUSTOM CRMO MTB   |
| SEATPOST         | KS RAGE 1 / 150MM TRAVEL (125MM ON S SIZE) / 30.9MM   |
| PEDALS           | ALLOY MTB   |
| DRIVE TRAIN      |   |
| SHIFTERS         | SHIMANO DEORE M6100 / 1 X 12 SPEED  |
| REAR-DERAILLEUR  | SHIMANO SLX M7100 / 12 SPEED  |
| FRONT-DERAILLEUR | N/A   |
| CHAINSET         | SHIMANO DEORE FC-M6130 / 32T / 170MM  |
| CHAIN            | KMC X12   |
| CASSETTE         | SHIMANO DEORE M6100 / 12 SPEED / 10-51T   |
| BRAKES           | SHIMANO M6100 180/180MM   |
| BRAKE-LEVERS     | SHIMANO M6100   |
| WHEELS           |   |
| RIMS             | DT SWISS M442 / 32H / 29" FRONT / 29" REAR (SIZES LG / XL) 29" FRONT / 27.5" REAR (SIZES SM / MD)                         |
| HUBS             | KT BOOST 15X110 SEALED BEARING 32H FRONT / KT SUPERBOOST 12X157 SEALED BEARING 32H REAR                                   |
| SPOKES           | DOUBLE-BUTTED STAINLESS STEEL   |
| TYRES            | MAXXIS MINION DHRII / EXO / TR / 29 X 2.4 FRONT & REAR (SIZES LG / XL) / 29 X 2.4 FRONT / 27.5 X 2.3 REAR (SIZES SM / MD) |

## FEATURES

- Series 3 custom butted and hydroformed 6013 alloy front triangle and swingarm, signature TRL suspension design, internal cable routing, 12 x 157mm SuperBoost, 130mm travel
- Shock: Fox Float DPS Performance, EVOL, 3 position adjust, 210 x 50
- Fork: Marzocchi Bomber Z2, 130mm travel, rebound adjust, Sweep adjust rail damper, 15 x 110
- Drivetrain: Shimano SLX M7100 / Deore M6100 12 Speed, 10-51T
- Brakes: Shimano M6100 calipers with M6100 Deore levers
- Components: Raceface Chester 35 bar and stem, ODI grips, KS Rage 1 dropper post
- Extra: This Saracen Ariel model includes the extra Push Links that allow you to change the rear wheel size of your bike. ( SM/MD includes a 29 link - LG/XL includes a 27.5 link )
- Tubeless ready

## GEOMETRY

| SIZE                          | S         | M         | L         | XL        |
|-------------------------------|-----------|-----------|-----------|-----------|
| SEAT TUBE (MM)                | 360       | 410       | 460       | 510       |
| TOP TUBE (MM)                 | 598       | 625       | 653       | 682       |
| REACH (MM)                    | 455       | 480       | 505       | 530       |
| STACK (MM)                    | 595       | 604       | 618       | 632       |
| HEAD TUBE (MM)                | 100       | 110       | 125       | 140       |
| HEAD ANGLE (°)                | 65        | 65        | 65        | 65        |
| SEAT ANGLE (°)                | 76.5      | 76.5      | 76.5      | 76.5      |
| BOTTOM BRACKET TO SADDLE (MM) | 690       | 740       | 790       | 840       |
| EFFECTIVE SEAT ANGLE (°)      | 76.4      | 76        | 75.7      | 75.4      |
| ACTUAL SEAT ANGLE (°)         | 71.5      | 71.5      | 71.5      | 71.5      |
| CHAINSTAY (MM)                | 440       | 440       | 440       | 440       |
| BOTTOM BRACKET DROP (MM)      | 30        | 30        | 30        | 30        |
| BOTTOM BRACKET (MM)           | 346       | 346       | 346       | 346       |
| WHEELBASE (MM)                | 1210      | 1239      | 1270      | 1302      |
| HEAD SET                      | ZS44/ZS56 | ZS44/ZS56 | ZS44/ZS56 | ZS44/ZS56 |
| LOWER STACK HEIGHT (MM)       | 2.9       | 2.9       | 2.9       | 2.9       |
| AXLE TO CROWN (MM)            | 541       | 541       | 541       | 541       |
| OFFSET (MM)                   | 44        | 44        | 44        | 44        |
| STANDOVER (MM)                | 732       | 732       | 731       | 731       |

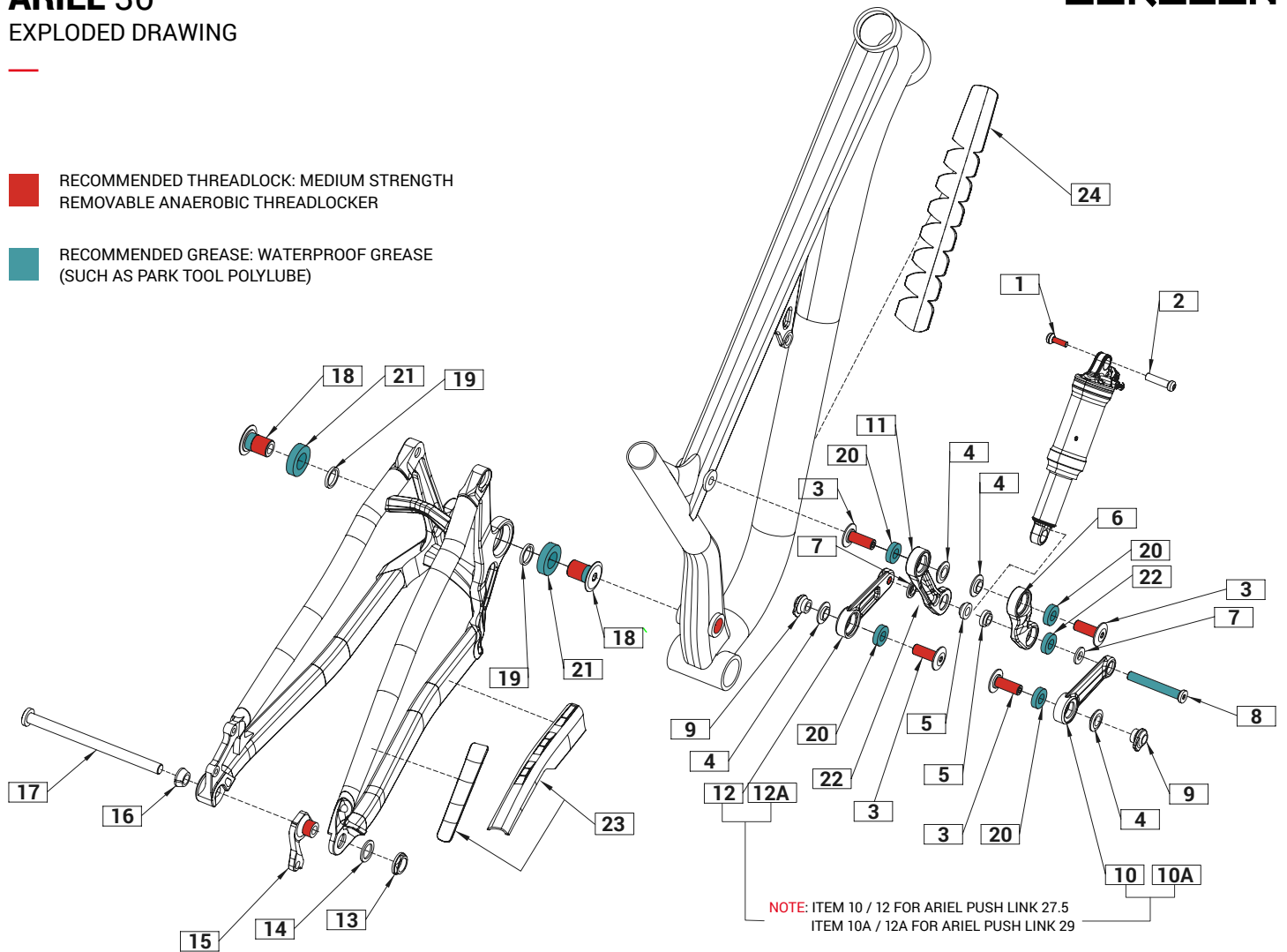
The image above is for illustration purposes only. Saracen reserves the right to change spec, colour, features and price without prior warning.

# ARIEL 30

## EXPLODED DRAWING

**RECOMMENDED THREADLOCK: MEDIUM STRENGTH  
REMOVABLE ANAEROBIC THREADLOCKER**

**RECOMMENDED GREASE: WATERPROOF GREASE  
(SUCH AS PARK TOOL POLYLUBE)**



| ITEM      | PART NUMBER | DESCRIPTION                            | QTY NEEDED | TORQUE | NOTES                               |
|-----------|-------------|--|------------|--------|-------------------------------------|
| 1 & 2     | RNSPR50008  | ARIEL UPPER SHOCK BOLT                 | 1          | 9NM    | PART NUMBER INCLUDES ITEM 1 & 2     |
| 3         | RNSPR50006  | ARIEL LINKAGE AXLE (PAIR)              | 4          | 15NM   | -                                   |
| 4         | RNSPR50007  | ARIEL LINKAGE SPACER (PAIR)            | 4          | -      | -                                   |
| 5         | RNSPR50005  | ARIEL INNER SHOCK SPACERS (PAIR)       | 2          | -      | -                                   |
| 6 & 11    | RNSPR50002  | ARIEL ROCKER LINK ARMS (PAIR)          | 1          | -      | PART NUMBER INCLUDES ITEM 6 & 11    |
| 7         | RNSPR50004  | ARIEL OUTER SHOCK SPACERS (PAIR)       | 2          | -      | -                                   |
| 8         | RNSPR50003  | ARIEL LOWER SHOCK BOLT                 | 1          | 10NM   | -                                   |
| 9         | RNSPR50009  | ARIEL SWING ARM THREADED INSERT (PAIR) | 2          | -      | -                                   |
| 10 & 12   | RNSPR50000  | ARIEL PUSH LINK 27.5 (PAIR)            | 1          | -      | PART NUMBER INCLUDES ITEM 10 & 12   |
| 10A & 12A | RNSPR50001  | ARIEL PUSH LINK 29 (PAIR)              | 1          | -      | PART NUMBER INCLUDES ITEM 10A & 12A |
| 13 & 15   | RNS4049     | ARIEL NON-DIRECT HANGER + NUT          | 1          | 20NM   | PART NUMBER INCLUDES ITEM 13 & 15   |
| 13 & 15   | RNS4047     | ARIEL DIRECT HANGER + NUT              | 1          | 20NM   | PART NUMBER INCLUDES ITEM 13 & 15   |
| 14        | RNSPR50010  | ARIEL HANGER WASHER                    | 1          | -      | -                                   |
| 16        | RNSPR50011  | ARIEL AXLE TAPER WASHER                | 1          | -      | -                                   |
| 17        | RNSPR50012  | ARIEL 157 REAR AXLE                    | 1          | 15NM   | -                                   |
| 18 & 19   | RNS5224     | ARIEL MAIN AXLE BOLTS + SPACERS (PAIR) | 2          | 36NM   | PART NUMBER INCLUDES ITEM 18 & 19   |
| 20        | N/A         | ARIEL LINKAGE BEARINGS 6901.RS         | 4          | -      | -                                   |
| 21        | N/A         | ARIEL MAIN PIVOT BEARINGS 6904.RS      | 2          | -      | -                                   |
| 22        | N/A         | ARIEL MAIN PIVOT BEARINGS 6900.RS      | 2          | -      | -                                   |
| 23        | RNSPR50016  | ARIEL CHAINSTAY PROTECTOR              | 1          | -      | -                                   |
| 24        | RNSPR50018  | ARIEL DOWNTUBE PROTECTOR               | 1          | -      | -                                   |

# ARIEL 30

## TECHNICAL INFORMATION

SARACEN

| MODEL                         | ARIEL 30                      |
|-------------------------------|-------------------------------|
| FRAME MATERIAL                | AL-6013                       |
| REAR TRAVEL                   | 130MM                         |
| SHOCK LENGTH / STROKE         | 210MM X 50MM                  |
| SHOCK SAG                     | 19.5MM                        |
| SAG EYE TO EYE                | 190.5MM                       |
| PIGGY BACK COMPATIBLE         | YES (LIMITS WATER BOTTLE FIT) |
| FRAME SHOCK BUSHING           | 22MM X 8MM                    |
| LINKAGE SHOCK BUSHING         | 22MM X 10MM                   |
| RECOMMENDED / MAX FORK LENGTH | 541MM / 561 MM                |
| OFFSET                        | 42-44MM                       |
| RECOMMENDED / MAX FORK TRAVEL | 29": 130MM / 140MM            |
| MAXIMUM TYRE                  | 29" X 2.6" / 27.5" X 2.6"     |
| BRAKE MOUNT TYPE              | IS160                         |
| MAX REAR ROTOR                | 200MM                         |
| SEAT POST                     | 30.9MM                        |
| SEAT COLLAR                   | 34.9MM                        |
| BOTTOM BRACKET TYPE           | BSA73                         |
| ISCG                          | NA                            |
| CRANK CHAINLINE               | SUPER BOOST                   |
| MAX CHAIN RING                | 38T                           |
| REAR HUB TYPE                 | 12 X 157                      |



## FOX SUSPENSION SETUP GUIDE

### Fox Float DPS / 210mm x 50mm

| RIDER WEIGHT (LBS) | RIDER WEIGHT (KGS) | PRESSURE (PSI) | SAG (%) | SAG (MM) | LSR (CLICKS) |
|--------------------|--------------------|----------------|---------|----------|--------------|
| 90                 | 41                 | 105            | 25-30%  | 16-19MM  | 11           |
| 110                | 50                 | 130            | 25-30%  | 16-19MM  | 10           |
| 130                | 59                 | 160            | 25-30%  | 16-19MM  | 8            |
| 150                | 68                 | 180            | 25-30%  | 16-19MM  | 7            |
| 170                | 77                 | 210            | 25-30%  | 16-19MM  | 6            |
| 190                | 86                 | 235            | 25-30%  | 16-19MM  | 5            |
| 210                | 95                 | 260            | 25-30%  | 16-19MM  | 4            |
| 230                | 104                | 290            | 25-30%  | 16-19MM  | CLOSED       |

NOTE: ALL CLICKS ARE FROM FULLY CLOSED POSITION

The image above is for illustration purposes only. Saracen reserves the right to change spec, colour, features and price without prior warning.