



SPECS

| FRAME | |
|------------------|--|
| SIZES | ONE |
| COLOUR | RED |
| FRAME | SERIES 3 CUSTOM BUTTED AND HYDROFORMED 6013 ALLOY FRONT TRIANGLE AND SWINGARM / 120MM TRAVEL |
| FORK | X-FUSION VELVET RL2 / 120MM TRAVEL |
| REAR-SHOCK | X-FUSION 02 PRO R |
| HEADSET | PRESTINE PTF13 |
| COMPONENTS | |
| HANDLEBARS | RACEFACE RIDE / 740MM / 31.8MM |
| STEM | SARACEN CUSTOM / 45MM |
| GRIPS | ODI ELITE MOTION |
| SADDLE | SARACEN CUSTOM CRMO MTB |
| SEATPOST | RACEFACE CHESTER / 30.9MM / 325MM |
| PEDALS | ALLOY MTB |
| DRIVE TRAIN | |
| SHIFTERS | SRAM GX-E / 1 X 11 SPEED |
| REAR-DERAILLEUR | SRAM NX / 11 SPEED |
| FRONT-DERAILLEUR | N/A |
| CHAINSET | SRAM NX 1X X-SYNC / 30T |
| CHAIN | SRAM PC 1110 |
| CASSETTE | SRAM POWERGLIDE 1130 / 11-42T |
| BRAKES | SHIMANO M6100 180/180MM |
| BRAKE-LEVERS | SHIMANO M6100 |
| WHEELS | |
| RIMS | JALCO / 32H / 24" |
| HUBS | PROMAX 15X100 SEALED BEARING 32H FRONT / PROMAX 12X142 S SEALED BEARING 32H REAR |
| SPOKES | DOUBLE-BUTTED STAINLESS STEEL |
| TYRES | MAXXIS MINION DHRII / 24 X 2.3 |

FEATURES

- Series 3 custom butted and hydroformed 6013 alloy front triangle and swingarm, signature TRL suspension design, internal cable routing, 12 x 142mm, 120mm travel
- Shock: X-Fusion 02 PRO, Rebound adjust, 190 x 40
- Fork: X-Fusion Velvet RL2, 120mm travel, Rebound adjust, Lockout, RL2 Damper, 41mm Rake
- Drivetrain: Sram NX 11 Speed, 11-42T
- Brakes: Shimano M6100 calipers with M6100 Deore levers
- Components: Raceface Ride bar and Saracen junior stem, ODI grips, Raceface Chester seatpost
- Tubeless ready

GEOMETRY

| SIZE | ONE |
|-------------------------------|-----------|
| SEAT TUBE (MM) | 315 |
| TOP TUBE (MM) | 502 |
| REACH (MM) | 360 |
| STACK (MM) | 530 |
| HEAD TUBE (MM) | 95 |
| HEAD ANGLE (°) | 65 |
| SEAT ANGLE (°) | - |
| BOTTOM BRACKET TO SADDLE (MM) | - |
| EFFECTIVE SEAT ANGLE (°) | - |
| ACTUAL SEAT ANGLE (°) | 68.6 |
| CHAINSTAY (MM) | 385 |
| BOTTOM BRACKET DROP (MM) | 5 |
| BOTTOM BRACKET (MM) | 313 |
| WHEELBASE (MM) | 1034 |
| HEAD SET | ZS44/ZS56 |
| LOWER STACK HEIGHT (MM) | 2.9 |
| AXLE TO CROWN (MM) | 500 |
| OFFSET (MM) | 40 |
| STANDOVER (MM) | 687 |

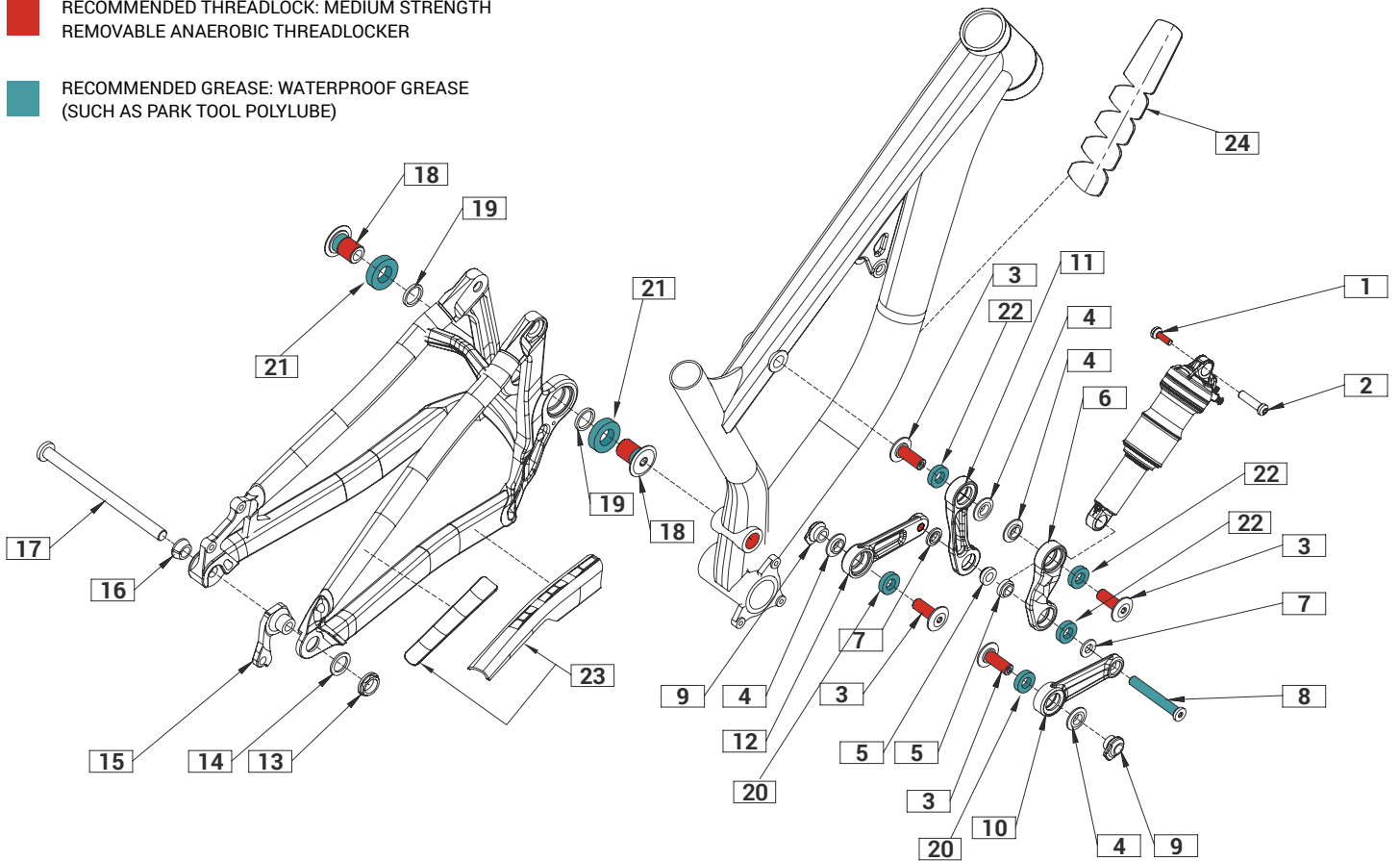
The image above is for illustration purposes only. Saracen reserves the right to change spec, colour, features and price without prior warning.

ARIEL JUNIOR

EXPLODED DRAWING

**RECOMMENDED THREADLOCK: MEDIUM STRENGTH
REMOVABLE ANAEROBIC THREADLOCKER**

**RECOMMENDED GREASE: WATERPROOF GREASE
(SUCH AS PARK TOOL POLYLUBE)**



| ITEM | PART NUMBER | DESCRIPTION | QTY NEEDED | TORQUE | NOTES |
|---------|-------------|--|------------|--------|-----------------------------------|
| 1 & 2 | RNSPR50008 | ARIEL UPPER SHOCK BOLT | 1 | 9NM | PART NUMBER INCLUDES ITEM 1 & 2 |
| 3 | RNSPR50006 | ARIEL LINKAGE AXLE (PAIR) | 4 | 15NM | - |
| 4 | RNSPR50007 | ARIEL LINKAGE SPACER (PAIR) | 4 | - | - |
| 5 | RNSPR50005 | ARIEL INNER SHOCK SPACERS (PAIR) | 2 | - | - |
| 6 & 11 | RNSPR50002 | ARIEL ROCKER LINK ARMS (PAIR) | 1 | - | PART NUMBER INCLUDES ITEM 6 & 11 |
| 7 | RNSPR50004 | ARIEL OUTER SHOCK SPACERS (PAIR) | 2 | - | - |
| 8 | RNSPR50003 | ARIEL LOWER SHOCK BOLT | 1 | 10NM | - |
| 9 | RNSPR50009 | ARIEL SWING ARM THREADED INSERT (PAIR) | 2 | - | - |
| 10 & 12 | RNSPR50001 | ARIEL PUSH LINK (PAIR) | 1 | - | PART NUMBER INCLUDES ITEM 10 & 12 |
| 13 & 15 | RNS4049 | ARIEL NON-DIRECT HANGER + NUT | 1 | 20NM | PART NUMBER INCLUDES ITEM 13 & 15 |
| 13 & 15 | RNS4047 | ARIEL DIRECT HANGER + NUT | 1 | 20NM | PART NUMBER INCLUDES ITEM 13 & 15 |
| 14 | RNSPR50010 | ARIEL HANGER WASHER | 1 | - | - |
| 16 | RNSPR50011 | ARIEL AXLE TAPER WASHER | 1 | - | - |
| 17 | RNSPR50013 | ARIEL 142 REAR AXLE | 1 | 15NM | - |
| 18 & 19 | RNS5224 | ARIEL MAIN AXLE BOLTS + SPACERS (PAIR) | 2 | 36NM | PART NUMBER INCLUDES ITEM 18 & 19 |
| 20 | N/A | ARIEL LINKAGE BEARINGS 6901.RS | 4 | - | - |
| 21 | N/A | ARIEL MAIN PIVOT BEARINGS 6904.RS | 2 | - | - |
| 22 | N/A | ARIEL LINKAGE BEARINGS 6900.RS | 2 | - | - |
| 23 | RNSPR50016 | ARIEL CHAINSTAY PROTECTOR | 1 | - | - |
| 24 | RNSPR50020 | ARIEL DOWNTUBE PROTECTOR | 1 | - | - |

ARIEL JUNIOR

TECHNICAL INFORMATION

SARACEN

| MODEL | ARIEL JUNIOR |
|-------------------------------|----------------|
| FRAME MATERIAL | AL-6013 |
| REAR TRAVEL | 120MM |
| SHOCK LENGTH / STROKE | 190MM X 45MM |
| SHOCK SAG | 12MM – 13.5MM |
| SAG EYE TO EYE | 178 – 176.5MM |
| PIGGY BACK COMPATIBLE | YES |
| FRAME SHOCK BUSHING | 22MM X 8MM |
| LINKAGE SHOCK BUSHING | 22MM X 10MM |
| RECOMMENDED / MAX FORK LENGTH | 500MM / 520 MM |
| OFFSET | 40MM |
| RECOMMENDED / MAX FORK TRAVEL | 26": 120MM |
| MAXIMUM TYRE | 24" X 2.5" |
| BRAKE MOUNT TYPE | IS160 |
| MAX REAR ROTOR | 200MM |
| SEAT POST | 30.9MM |
| SEAT COLLAR | 34.9MM |
| BOTTOM BRACKET TYPE | BSA73 |
| ISCG | 05 |
| CRANK CHAINLINE | STANDARD |
| MAX CHAIN RING | 34T |
| REAR HUB TYPE | 12 X 142 |



X-FUSION SUSPENSION

SETUP GUIDE

X-Fusion 02 Pro / 195mm x 45mm

| RIDER WEIGHT (LBS) | RIDER WEIGHT (KGS) | PRESSURE (PSI) | SAG (%) | SAG (MM) |
|--------------------|--------------------|----------------|---------|----------|
| 50 | 23 | 60 | 25-30% | 11-13MM |
| 70 | 32 | 80 | 25-30% | 11-13MM |
| 90 | 41 | 105 | 25-30% | 11-13MM |
| 110 | 50 | 130 | 25-30% | 11-13MM |
| 130 | 59 | 160 | 25-30% | 11-13MM |
| 190 | 86 | 235 | 25-30% | 16-19MM |
| 210 | 95 | 260 | 25-30% | 16-19MM |
| 230 | 104 | 290 | 25-30% | 16-19MM |

NOTE: ALL CLICKS ARE FROM FULLY CLOSED POSITION

The image above is for illustration purposes only. Saracen reserves the right to change spec, colour, features and price without prior warning.