



SPECS

| FRAME | |
|------------------|--|
| SIZES | SM / MD / LG / XL |
| COLOUR | SATIN BLACK |
| FRAME | SERIES 3 CUSTOM BUTTED AND HYDROFORMED 6013 ALLOY FRONT TRIANGLE AND SWINGARM / 130MM TRAVEL |
| FORK | RECCOMENDED TRAVEL - 130MM |
| REAR-SHOCK | FOX FLOAT DPS FACTORY |
| HEADSET | PRESTINE PTF13 |
| COMPONENTS | |
| HANDLEBARS | N/A |
| STEM | N/A |
| GRIPS | N/A |
| SADDLE | N/A |
| SEATPOST | N/A |
| PEDALS | N/A |
| DRIVE TRAIN | |
| SHIFTERS | N/A |
| REAR-DERAILLEUR | N/A |
| FRONT-DERAILLEUR | N/A |
| CHAINSET | N/A |
| CHAIN | N/A |
| CASSETTE | N/A |
| BRAKES | N/A |
| BRAKE-LEVERS | N/A |
| WHEELS | |
| RIMS | N/A |
| HUBS | N/A |
| SPOKES | N/A |
| TYRES | N/A |

FEATURES

- Series 3 custom butted and hydroformed 6013 alloy front triangle and swingarm, signature TRL suspension design, internal cable routing, 12 x 157mm SuperBoost, 130mm travel
- Shock: Fox Float DPS Factory, EVOL, 3 position adjust, 210 x 50
- Included in the box: Headset, Seat clamp, Chainstay Protectors, Rear Axle and Dropout
- Extra: This Saracen Ariel model includes the extra Push Links that allow you to change the rear wheel size of your bike. (SM/MD includes a 29 link – LG/XL includes a 27.5 link)

GEOMETRY

| SIZE | S | M | L | XL |
|-------------------------------|-----------|-----------|-----------|-----------|
| SEAT TUBE (MM) | 360 | 410 | 460 | 510 |
| TOP TUBE (MM) | 598 | 625 | 653 | 682 |
| REACH (MM) | 455 | 480 | 505 | 530 |
| STACK (MM) | 595 | 604 | 618 | 632 |
| HEAD TUBE (MM) | 100 | 110 | 125 | 140 |
| HEAD ANGLE (°) | 65 | 65 | 65 | 65 |
| SEAT ANGLE (°) | 76.5 | 76.5 | 76.5 | 76.5 |
| BOTTOM BRACKET TO SADDLE (MM) | 690 | 740 | 790 | 840 |
| EFFECTIVE SEAT ANGLE (°) | 76.4 | 76 | 75.7 | 75.4 |
| ACTUAL SEAT ANGLE (°) | 71.5 | 71.5 | 71.5 | 71.5 |
| CHAINSTAY (MM) | 440 | 440 | 440 | 440 |
| BOTTOM BRACKET DROP (MM) | 30 | 30 | 30 | 30 |
| BOTTOM BRACKET (MM) | 346 | 346 | 346 | 346 |
| WHEELBASE (MM) | 1210 | 1239 | 1270 | 1302 |
| HEAD SET | ZS44/ZS56 | ZS44/ZS56 | ZS44/ZS56 | ZS44/ZS56 |
| LOWER STACK HEIGHT (MM) | 2.9 | 2.9 | 2.9 | 2.9 |
| AXLE TO CROWN (MM) | 541 | 541 | 541 | 541 |
| OFFSET (MM) | 44 | 44 | 44 | 44 |
| STANDOVER (MM) | 732 | 732 | 731 | 731 |

The image above is for illustration purposes only. Saracen reserves the right to change spec, colour, features and price without prior warning.

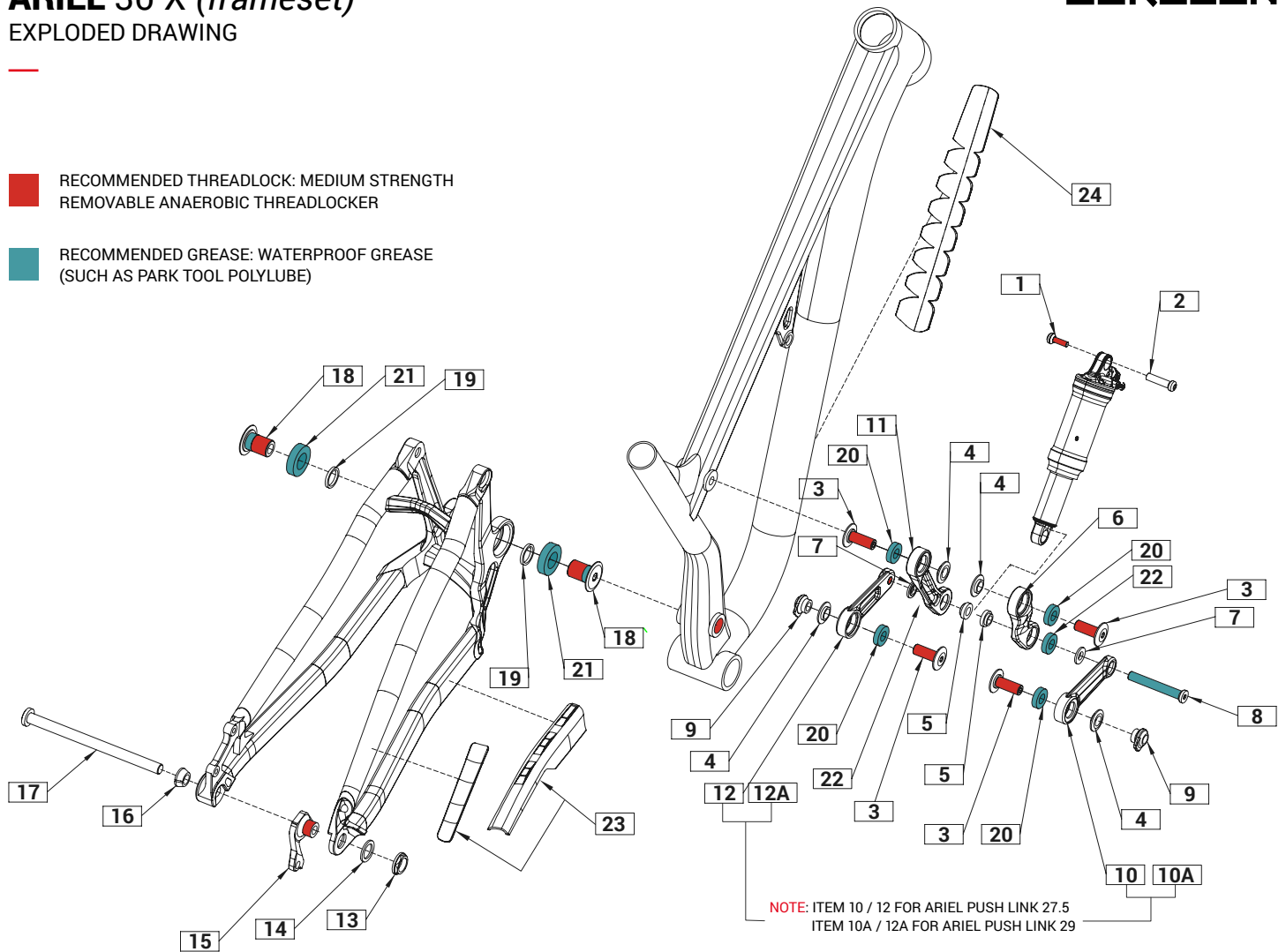
ARIEL 30 X (frameset)

EXPLODED DRAWING

SARACEN

**RECOMMENDED THREADLOCK: MEDIUM STRENGTH
REMOVABLE ANAEROBIC THREADLOCKER**

**RECOMMENDED GREASE: WATERPROOF GREASE
(SUCH AS PARK TOOL POLYLUBE)**



| ITEM | PART NUMBER | DESCRIPTION | QTY NEEDED | TORQUE | NOTES |
|-----------|-------------|--|------------|--------|-------------------------------------|
| 1 & 2 | RNSPR50008 | ARIEL UPPER SHOCK BOLT | 1 | 9NM | PART NUMBER INCLUDES ITEM 1 & 2 |
| 3 | RNSPR50006 | ARIEL LINKAGE AXLE (PAIR) | 4 | 15NM | - |
| 4 | RNSPR50007 | ARIEL LINKAGE SPACER (PAIR) | 4 | - | - |
| 5 | RNSPR50005 | ARIEL INNER SHOCK SPACERS (PAIR) | 2 | - | - |
| 6 & 11 | RNSPR50002 | ARIEL ROCKER LINK ARMS (PAIR) | 1 | - | PART NUMBER INCLUDES ITEM 6 & 11 |
| 7 | RNSPR50004 | ARIEL OUTER SHOCK SPACERS (PAIR) | 2 | - | - |
| 8 | RNSPR50003 | ARIEL LOWER SHOCK BOLT | 1 | 10NM | - |
| 9 | RNSPR50009 | ARIEL SWING ARM THREADED INSERT (PAIR) | 2 | - | - |
| 10 & 12 | RNSPR50000 | ARIEL PUSH LINK 27.5 (PAIR) | 1 | - | PART NUMBER INCLUDES ITEM 10 & 12 |
| 10A & 12A | RNSPR50001 | ARIEL PUSH LINK 29 (PAIR) | 1 | - | PART NUMBER INCLUDES ITEM 10A & 12A |
| 13 & 15 | RNS4049 | ARIEL NON-DIRECT HANGER + NUT | 1 | 20NM | PART NUMBER INCLUDES ITEM 13 & 15 |
| 13 & 15 | RNS4047 | ARIEL DIRECT HANGER + NUT | 1 | 20NM | PART NUMBER INCLUDES ITEM 13 & 15 |
| 14 | RNSPR50010 | ARIEL HANGER WASHER | 1 | - | - |
| 16 | RNSPR50011 | ARIEL AXLE TAPER WASHER | 1 | - | - |
| 17 | RNSPR50012 | ARIEL 157 REAR AXLE | 1 | 15NM | - |
| 18 & 19 | RNS5224 | ARIEL MAIN AXLE BOLTS + SPACERS (PAIR) | 2 | 36NM | PART NUMBER INCLUDES ITEM 18 & 19 |
| 20 | N/A | ARIEL LINKAGE BEARINGS 6901.RS | 4 | - | - |
| 21 | N/A | ARIEL MAIN PIVOT BEARINGS 6904.RS | 2 | - | - |
| 22 | N/A | ARIEL MAIN PIVOT BEARINGS 6900.RS | 2 | - | - |
| 23 | RNSPR50016 | ARIEL CHAINSTAY PROTECTOR | 1 | - | - |
| 24 | RNSPR50018 | ARIEL DOWNTUBE PROTECTOR | 1 | - | - |

ARIEL 30 X (frameset)

TECHNICAL INFORMATION

SARACEN

| MODEL | ARIEL 30 |
|-------------------------------|-------------------------------|
| FRAME MATERIAL | AL-6013 |
| REAR TRAVEL | 130MM |
| SHOCK LENGTH / STROKE | 210MM X 50MM |
| SHOCK SAG | 19.5MM |
| SAG EYE TO EYE | 190.5MM |
| PIGGY BACK COMPATIBLE | YES (LIMITS WATER BOTTLE FIT) |
| FRAME SHOCK BUSHING | 22MM X 8MM |
| LINKAGE SHOCK BUSHING | 22MM X 10MM |
| RECOMMENDED / MAX FORK LENGTH | 541MM / 561 MM |
| OFFSET | 42-44MM |
| RECOMMENDED / MAX FORK TRAVEL | 29": 130MM / 140MM |
| MAXIMUM TYRE | 29" X 2.6" / 27.5" X 2.6" |
| BRAKE MOUNT TYPE | IS160 |
| MAX REAR ROTOR | 200MM |
| SEAT POST | 30.9MM |
| SEAT COLLAR | 34.9MM |
| BOTTOM BRACKET TYPE | BSA73 |
| ISCG | NA |
| CRANK CHAINLINE | SUPER BOOST |
| MAX CHAIN RING | 38T |
| REAR HUB TYPE | 12 X 157 |



FOX SUSPENSION

SETUP GUIDE

Fox Float DPS / 210mm x 50mm

| RIDER WEIGHT (LBS) | RIDER WEIGHT (KGS) | PRESSURE (PSI) | SAG (%) | SAG (MM) | LSR (CLICKS) |
|--------------------|--------------------|----------------|---------|----------|--------------|
| 90 | 41 | 105 | 25-30% | 16-19MM | 11 |
| 110 | 50 | 130 | 25-30% | 16-19MM | 10 |
| 130 | 59 | 160 | 25-30% | 16-19MM | 8 |
| 150 | 68 | 180 | 25-30% | 16-19MM | 7 |
| 170 | 77 | 210 | 25-30% | 16-19MM | 6 |
| 190 | 86 | 235 | 25-30% | 16-19MM | 5 |
| 210 | 95 | 260 | 25-30% | 16-19MM | 4 |
| 230 | 104 | 290 | 25-30% | 16-19MM | CLOSED |

NOTE: ALL CLICKS ARE FROM FULLY CLOSED POSITION

The image above is for illustration purposes only. Saracen reserves the right to change spec, colour, features and price without prior warning.