

# MINIMAL

Easily applied with a single step.

Fully dry after about 4 hours.

Conservation: in a dry, cool place, away from the frost and humidity.



Step 1 - To start, apply Primus Sabbia



Step 2 - If necessary, prepare the shade with Minimal



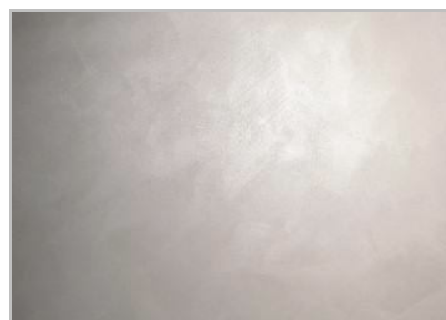
Step 3 - Mix the product until it's homogeneous



Step 4 - Freely distribute the product



Step 5 - After several minutes, caress the product with a dry brush if you want to uniform the drawing



Step 6 - Let the product dry. A second coat would make the effect more opaque and homogeneous

# MINIMAL

## Coverage

Packages	mq/lt	LT. 5	LT. 2,5	LT. 1
Minimal Art. 2030	5,5	28 mq	14 mq	5,5 mq

## Formulae

Packages		LT. 5	LT. 2,5	LT. 1
Minimal Art. 2030	K2	250 ml	125 ml	50 ml
	K3	62 ml	31 ml	12,5 ml
	K4	20 ml	10 ml	4 ml
	K5	7 ml	3,5 ml	1,4 ml

Does not contains solvents - Not inflamable - Washable

### Regulatory information

EU VOC limit for this product (cat.A/I): 200 g/l (2010)

Maximum VOC content < 8 g/l

### Hazard Identification

None