

Fully washable with not aggressive soaps.
 Totally dry after 6 to 8 hours.
 Conservation: in a dry, cool place, away from the frost and humidity.



Step 1 - Start applying Primus Sabbia.



Step 2 - If necessary, prepare the shade with Gioia.



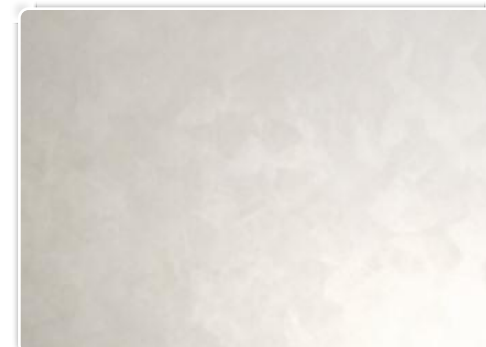
Step 3 - Mix the product until it's homogeneous.



Step 4 - First coat



Step 5 - Second coat



Step 6 - Let the product dry

Coverage

| Packages | mq/lt | LT. 15 | LT. 5 | LT. 2,5 | LT. 1 |
|-----------------|-------|--------|-------|---------|--------|
| Gioia Art. 2000 | 7,5 | 115 mq | 38 mq | 19 mq | 7,5 mq |

Formulae

| Packages | | LT. 15 | LT. 5 | LT. 2,5 | LT. 1 |
|-----------------|----|----------|--------|---------|---------|
| Gioia Art. 2000 | G1 | 2.250 ml | 750 ml | 375 ml | 150 ml |
| | G2 | 750 ml | 250 ml | 125 ml | 50 ml |
| | G3 | 186 ml | 62 ml | 31 ml | 12,4 ml |
| | G4 | 62 ml | 20 ml | 10 ml | 4 ml |
| | G5 | 21 ml | 7 ml | 3,5 ml | 1,4 ml |



Download PDF

Does not contains solvents - Not inflammable - Washable - Breaths

Regulatory information

EU VOC limit for this product (cat.A/I): 200 g/l (2010)
 Maximum VOC content 40 g/l

Hazard Identification

EUH208: It Contains a mixture of: 5-chloro-2-methyl-2-hisothiazol-3-one, 2-methyl-2-hisothiazol-3-one.
 It may cause an allergic reaction.

GIORGIO GRAESAN
 and Friends

- Home
- About Us
- Contact us
- Showroom
- Dealers
- Decorators
- News
- Videos
- Hints
- Samples
- Security sheets
- Technical sheets
- Buy Online



Designed and Made in Italy

Giorgio Graesan & Friends Sas di Shila Graesan
 VAT # IT05374620960

[Cookie Preferences](#)