



Sleep Mask Tutorial

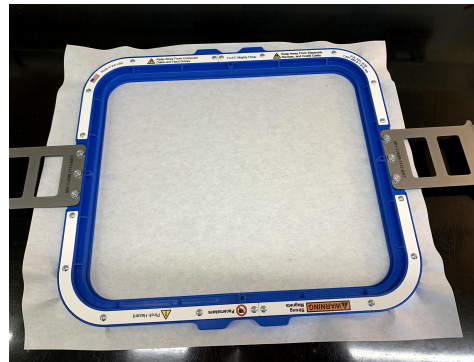
Materials -

Tear Away stabilizer
Top Fabric - 8" X 5"
Bottom Fabric - 8" X 5"
Elastic - Around 12 inches
Matching Bobbin
Painters Tape



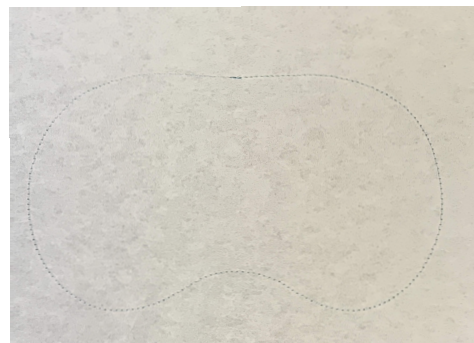
Step 1

Hoop 2 layers of tearaway



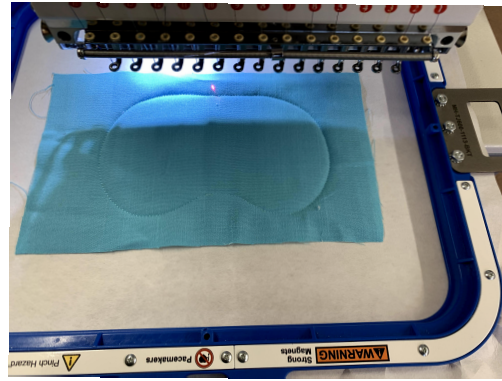
Step 2

Stitch placement



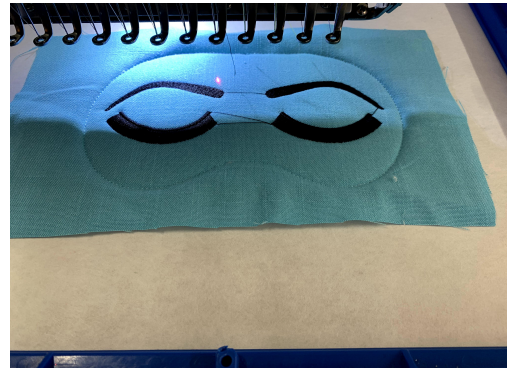
Step 3

Float fabric and stitch
tackdown

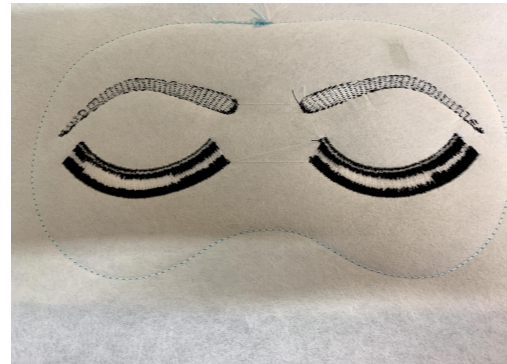


Step 4

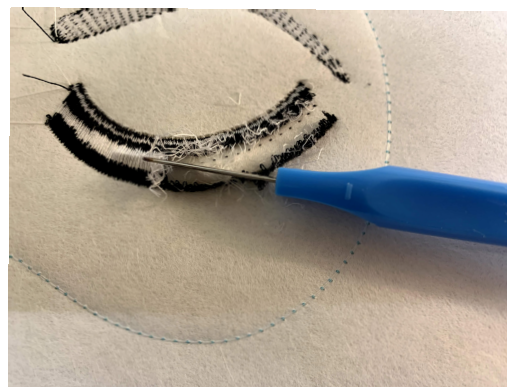
Stitch design



On this particular design
only (Holly Go Lightly)
remove hoop from machine
after this point. Turn it
over and on the back of the
design



use a seam ripper or small
scissors to cut **ONLY** the
bobbin thread on the
LONG satin
stitch on the lashes. Then
turn over the hoop and on
the front pull the bottom
of the
lashes through to create a
fringe. If you've never
done fringe before and
don't understand what I'm
talking about, there are
some good YouTube videos
to watch before going any
further.



Step 5

Use painters tape to attach the back fabric to the back of the hoop making sure to cover all stitch lines.



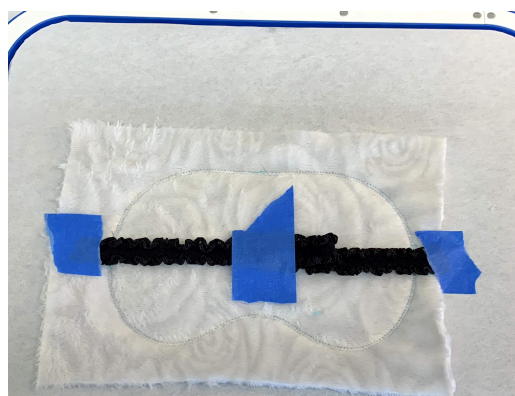
Step 6

Stitch the back tackdown step and then the elastic placement.



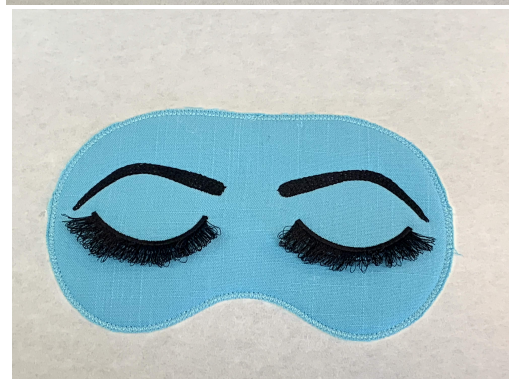
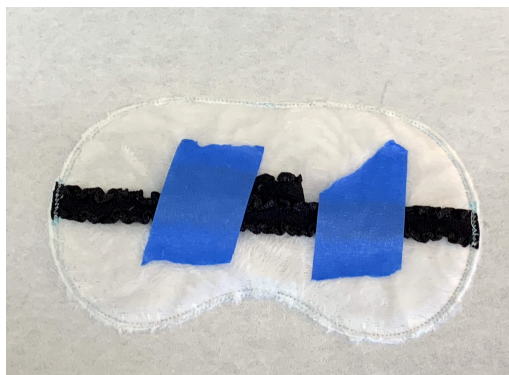
Step 7

Use painters tape to attach elastic with ends facing the outside . You'll have to bunch up the elastic in the center and tape in place.



Step 8

Stitch elastic tackdown then remove hoop from machine and trim all fabric as close as possible to the outline. (Just like an applique)



CHANGE BOBBIN THREAD!

Step 9

Replace hoop on machine then stitch final satin colors.

You're Finished!

Remove from hoop and stabilizer and enjoy!

