

Art ep!H

NEW RANGES 24





CONTENTS

ABOUT US
ART HIDE NEW RELEASES
SASHA BIKOFF X ART HIDE
PRICE LIST
CONTACT

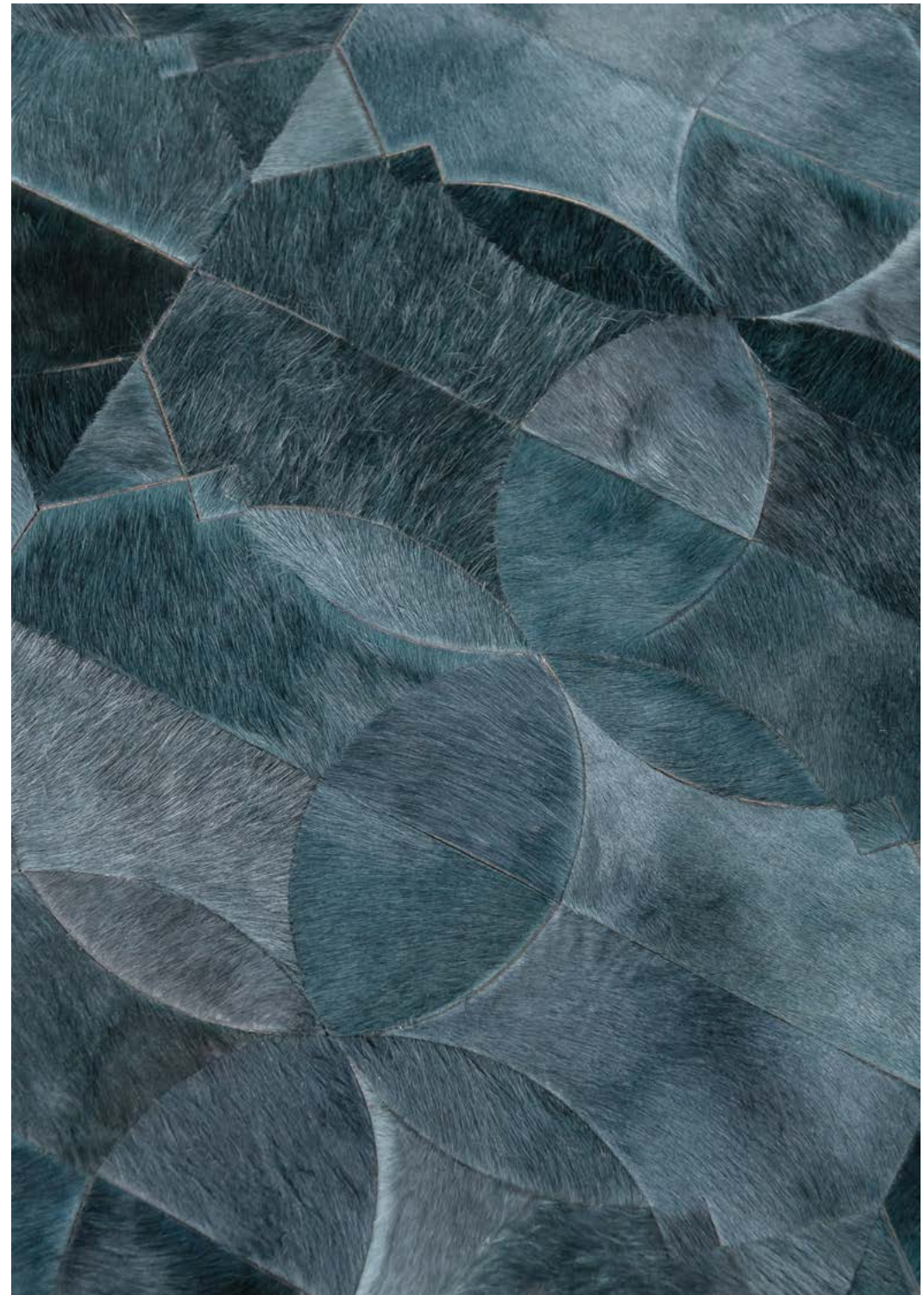
ABOUT ART HIDE

Step into the vibrant world of Art Hide, an Australian brand that specializes in luxurious, ethically-sourced hide rugs. Combining the skills of third generation artisans with contemporary technologies, Art Hide infuses a unique Antipodean twist into every aspect of colour, pattern, and design.

Since 2010, Art Hide has captivated audiences worldwide with fresh and eclectic creations, breathing new life into the traditional realm of cowhide aesthetics

Driven by a passion for this beautiful natural textile, Art Hide's heirloom quality products effortlessly evoke a one-of-a-kind allure and showstopping glamor to all manner of residential or commercial spaces.

GLOBAL WEBSTORE - [ARTHIDE.CO](https://arthide.co)
DIGITAL SHOWROOM - [AHGCSHOWROOM.COM.AU](https://ahgcs showroom.com.au)





ART HIDE NEW RELEASES

Art Hide's newest rug collection, a sublime fusion of nature-inspired themes, luminous colours, and timeless craftsmanship.

Inspired by the interplay of light and shadow, and of ocean and earth, each rug echoes nature's beauty to heighten your senses. Curate a foundation of serene energy, one that promotes reflection, peacefulness, and tranquility.

Deeply saturated earth and water-inspired tones complement Art Hide's new Fusion stitchless technique, delivering an aesthetic experience like no other. Abstract shapes, longer hair and a plush base make for a sumptuous and luxurious feel underfoot.

The size, the colours and the shape are all customizable to your unique style, enabling a personalized experience from design to delivery.



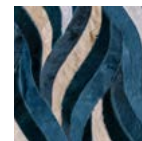


ONDA RUG

Its ocean inspired wavy pattern is perfect for accenting rooms and highlighting colours in your space when customizing. Whether you want to complement your existing décor or create a bold statement, this rug is your blank canvas.



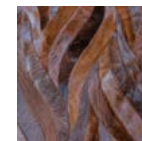
Available in Circular, Rectangle, Runner & all Custom sizes.
For pricing, please see our Price List at the end of the catalogue.



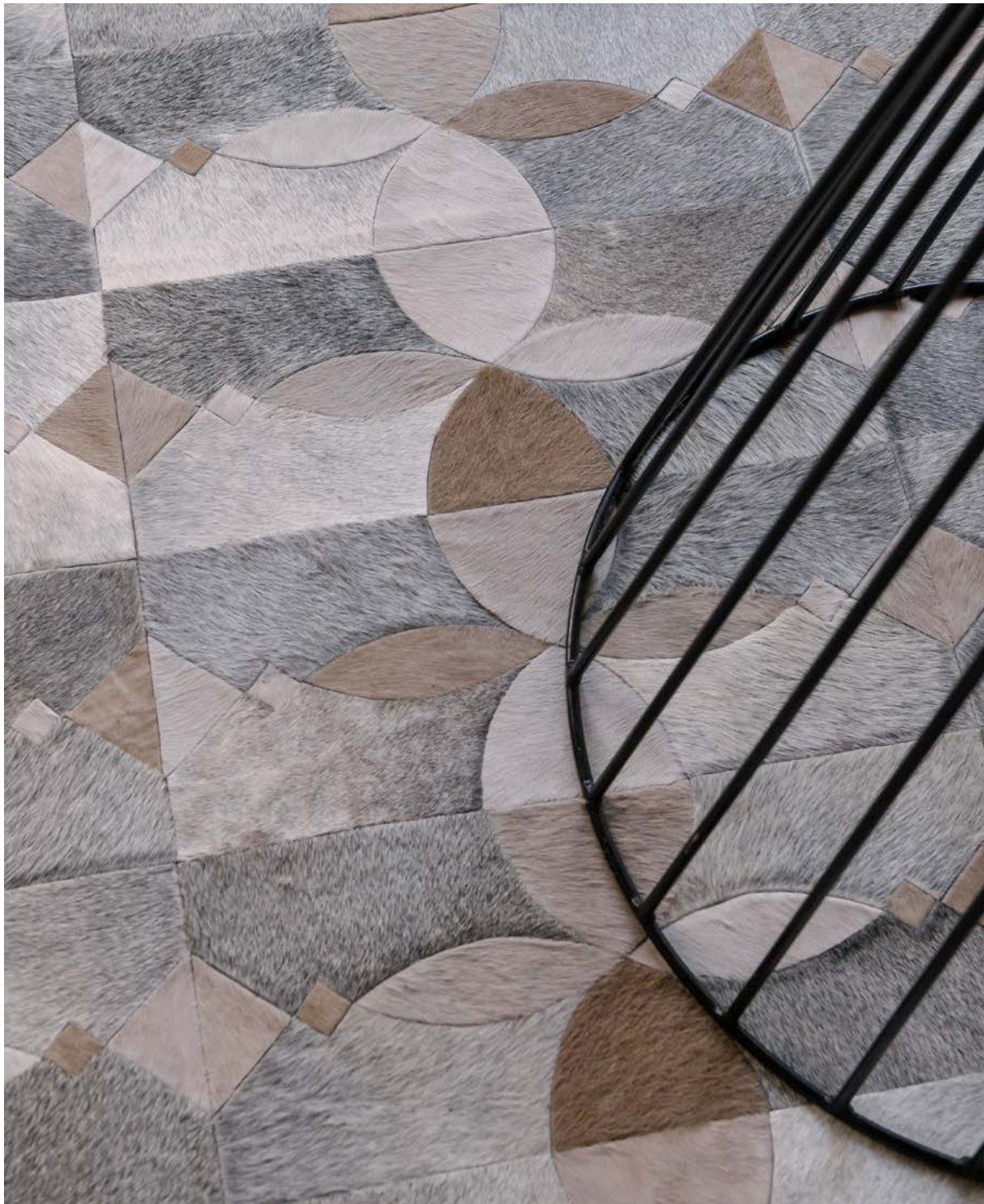
BLUE



OLIVE



RUSSET



CAMINO RUG

The Camino features an undulating design created with a careful selection of shades, creating a variety of textured tones across its surface.

Utilizing Art Hide's new Fusion stitchless construction technique, the rug's finish is luxurious with longer hair and plush base (0.5cm/0.25inch), for a softer, cushier feel.



Available in Circular, Rectangle, Runner & all Custom sizes.
For pricing, please see our Price List at the end of the catalogue.



PETROL



TAUPE



FLORES RUG

The Flores Rug is an exquisite statement piece that will bring a sophisticated style to any interior. Its subtle palette and artful design will add a layer of luxurious texture to your flooring.

Utilizing Art Hide's new Fusion stitchless construction technique, the rug's finish is luxurious with longer hair and plush base (0.5cm/0.25inch), for a softer, cushier feel.



Available in Circular, Rectangle, Runner & all Custom sizes.
For pricing, please see our Price List at the end of the catalogue.



PINK CLAY



CREAM MIX





SUSURRO RUG

This Susurro features large format tiles in a gentle waves pattern in a striking yet simple colour palette of creams and jade, punctuated with glittering gold.

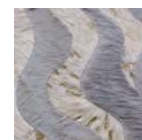
Or, opt for a silver or rose gold alternative (or no metallic, if you prefer).

Utilizing Art Hide's new Fusion stitchless construction technique, the rug's finish is luxurious with longer hair and plush base (0.5cm/0.25inch) for a softer, cushier feel.



Available in Circular, Rectangle, Runner & all Custom sizes.

For pricing, please see our Price List at the end of the catalogue.



GREY



JADE



SASHA BIKOFF X ART HIDE

Art Hide, in its first-ever collaboration with an external designer, joins forces with renowned New York interior designer Sasha Bikoff. The partnership was born out of a shared commitment to crafting extraordinary and attention-commanding pieces.

Bikoff's distinctive style, characterized by its daring use of bold hues and vibrant patterns, takes center stage in a mesmerizing and luxurious collection that draws inspiration from the psychedelic fashion and bohemian spirit of the iconic Woodstock era.





SHIBORI RUG

Prepare to be transported to a world of exoticism from the east, where craftsmanship and creativity meet in perfect harmony. Visionary designer Sasha Bikoff has skillfully infused the ancient Japanese dying technique of Shibori into this exquisite rug. Drawing inspiration from her in-depth research and passion for handmade textiles, she has expertly combined tradition with innovation.

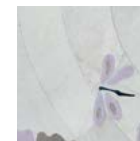
The magic begins with Art Hide's in-house dyeing process, which showcases a kaleidoscope of indigo blues, GREYs and lilacs. Art Hide's innovative Fusion technique takes center stage in the creation of this rug. With absolutely no stitching, the seamless finish of the Shibori Rug is truly a sight to behold.



Available in Circular, Rectangle, Runner & all Custom sizes.
For pricing, please see our Price List at the end of the catalog.



BLUE



GREY

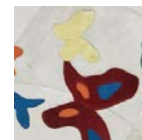
MARIPOSA RUG

Immerse yourself in the captivating beauty of the Sasha Bikoff X Art Hide Collaboration - Mariposa Rug. Sasha Bikoff, a visionary in the world of interior design, has ingeniously brought the allure of the outdoors into this rug, allowing us to reconnect with the innate charm of natural hides. It is an homage to nature and a testament to Sasha's profound appreciation for the delicate beauty of butterflies and what they symbolize.

This extraordinary piece takes us on a whimsical journey. Picture yourself in a field adorned with enchanting butterflies, their vibrant colours twinkling in the sunlight as they gracefully flutter around you. Inspired by this mesmerizing spectacle, Sasha meticulously crafted the Mariposa Rug to embody the essence of a wildflower-filled meadow.



Available in Circular, Rectangle, Runner & all Custom sizes.
For pricing, please see our Price List at the end of the catalogue.



CREAM



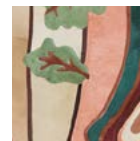
DANS LE BOIS RUG

Dans Le Bois is more than just a rug, it's a statement. With its abstract and almost graphic-like subject matter, it truly captures the essence of the 70s. But what sets it apart is its playful take on Faux Bois design. The intricate pattern, featuring falling leaves, adds a touch of whimsy and magic to this groovy masterpiece.

This rug is lovingly crafted to transport you to an enchanting 70's inspired realm, with its vibrant colours and homage to nature. Inspired by the beauty of nature and the artistic flair of the 70s, Dans Le Bois tells a story that is both nostalgic and modern.



Available in Circular, Rectangle, Runner & all Custom sizes.
For pricing, please see our Price List at the end of the catalogue.



MULTI



FUNGHI RUG

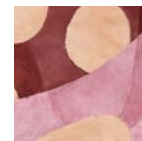
Dans Le Bois is more than just a rug, it's a statement. With its abstract and introducing the Sasha Bikoff X Art Hide Collaboration - Funghi Rug, an epitome of magic and artistry in the world of interior design. Mushrooms are currently in the spotlight, and inspired designer Sasha Bikoff knew it was the perfect opportunity to create a rug that embodies their playful spirit.

The Funghi rug, shaped like a mushroom, is a grand-scale masterpiece that feels like part of a fairy tale. It's like a piece of the forest right at your feet, perfectly balancing the beauty of nature with the artistry of design.



Available in Custom sizes and Colours.

For pricing, please see our Price List at the end of the catalogue.



MULTI

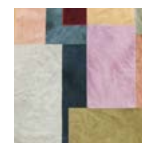


PASTICHE RUG

Crafted with a deep appreciation for art and fashion, the Pastiche Rug infuses any space with creative energy and unexpected colour. Drawing inspiration from the 90s fashion of Dolce & Gabbana and the 70's hippie era, this stylish rug puts a very modern twist on classic patchwork quilt patterns. Featuring psychedelic fashion-driven designs, large format irregular tile formations and playful arrangements of intrepid and vibrant colours.



Available in Circular, Rectangle, Runner & all Custom sizes.
For pricing, please see our Price List at the end of the catalogue.



MULTI



TAUPE



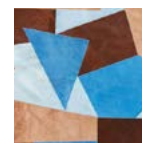
FRAGMENTS RUG

The Sasha Bikoff X Art Hide Collaboration Fragments Rug effortlessly blurs the boundaries between art and fashion. This exquisitely crafted rug is the perfect embodiment of contemporary style and vintage vibrancy, drawing influence from designer Sasha Bikoff's reverence for vintage leatherwork and patchwork fashion from the 70s.

The Fragments Rug utilizes Art Hide's traditional stitching technique alongside a carefully considered, uplifting colour palette, allowing shades of the earth and sky to come together in perfect harmony.



Available in Circular, Rectangle, Runner & all Custom sizes.
For pricing, please see our Price List at the end of the catalogue.



BLUE



SILVER

WOODLAND MENAGERIE TAPESTRY

Woodland Menagerie is inspired by Persian pictorial rugs as well as vintage Flemish and French tapestries. It's really a combination of the entire collection. It shares a story of this beautiful woodland scene with deer and skunks and animals and it's very poetic and really shares Art Hide's great attention to detail and how Art Hide is really able to capture the essence of nature with these animals, the riverbed, the flowing stream and the trees.



BOHEMIAN RHAPSODY TAPESTRY

Bohemian Rhapsody is an energetic, enthusiastic pattern that is greatly detailed and it takes on the 70's hippie, trippie kind of vibe and it is greatly connected to the patterns that we created and the collection that was inspired by textiles, but it takes it takes up a notch to very extreme detailed and pattern.



SASHA BIKOFF X ART HIDE CUSHION RANGE

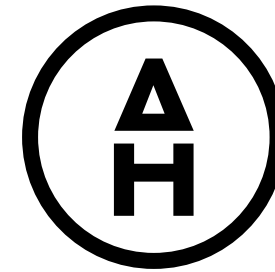




PRICE LIST

VISIT LINK BELOW FOR STANDARD SIZES & CURRENT PRICING

[VIEW HERE](#)



CONTACTS

FOR SALES, GENERAL OR MEDIA INQUIRIES :
KURA PERKINS
KURA@ARTHIDE.CO

+61 458 785 361

DIGITAL SHOWROOM

WWW.AHGCSHOWROOM.COM.AU

ARTHIDE.CO