



LALIMALU

LALIMALU is inspired by the modern day Goddess, a woman who dances to her own beat across beaches & concrete jungles, a cosmic powerhouse who loves all things sacred and beautiful.

Born on Bali, the island of the Gods, each collection combines spiritual inspiration with sustainably sourced luxury materials and handmade craftsmanship.





The 11.11 Collection

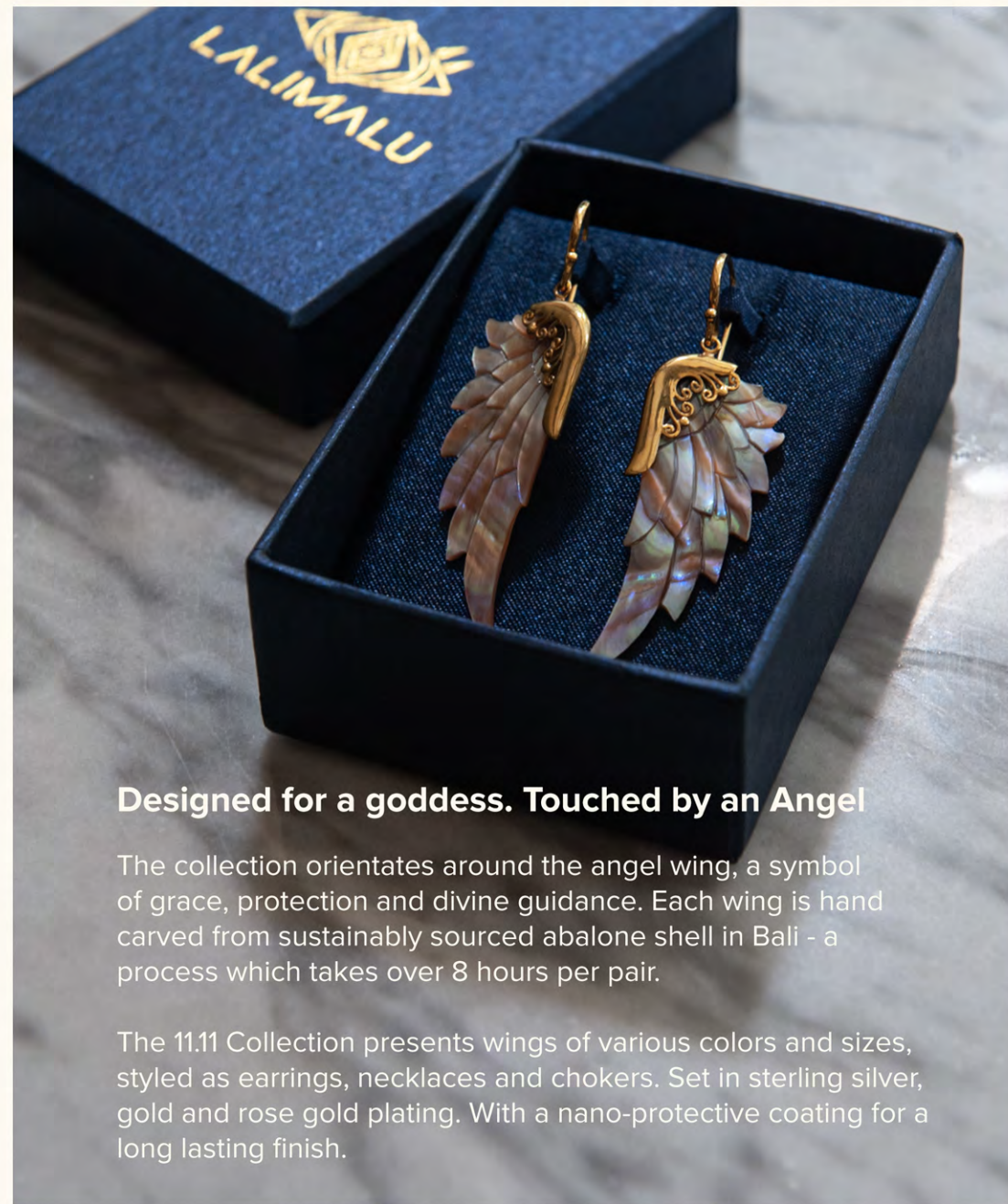
*A powerful reminder that life is full of
cosmic wonder and divine destiny.*

LALIMALU

*I saw the angel
in the marble
and carved until
I set him free.*

- Michelangelo

LALIMALU



Designed for a goddess. Touched by an Angel

The collection orientates around the angel wing, a symbol of grace, protection and divine guidance. Each wing is hand carved from sustainably sourced abalone shell in Bali - a process which takes over 8 hours per pair.

The 11.11 Collection presents wings of various colors and sizes, styled as earrings, necklaces and chokers. Set in sterling silver, gold and rose gold plating. With a nano-protective coating for a long lasting finish.

Small Angel Wing Earrings: Hooks

For a petite take on our iconic silhouette, available in 9 variations of color and precious metal setting.

Size: 5 cm / 2 inches from ear hook



Purist Rose - Small wings with rose gold settings



Midnight Angel - Small



Snow White - Small



Purist Gold - Small



Dark Angel - Small



Black Rose - Small



Rainbow Rose - Small



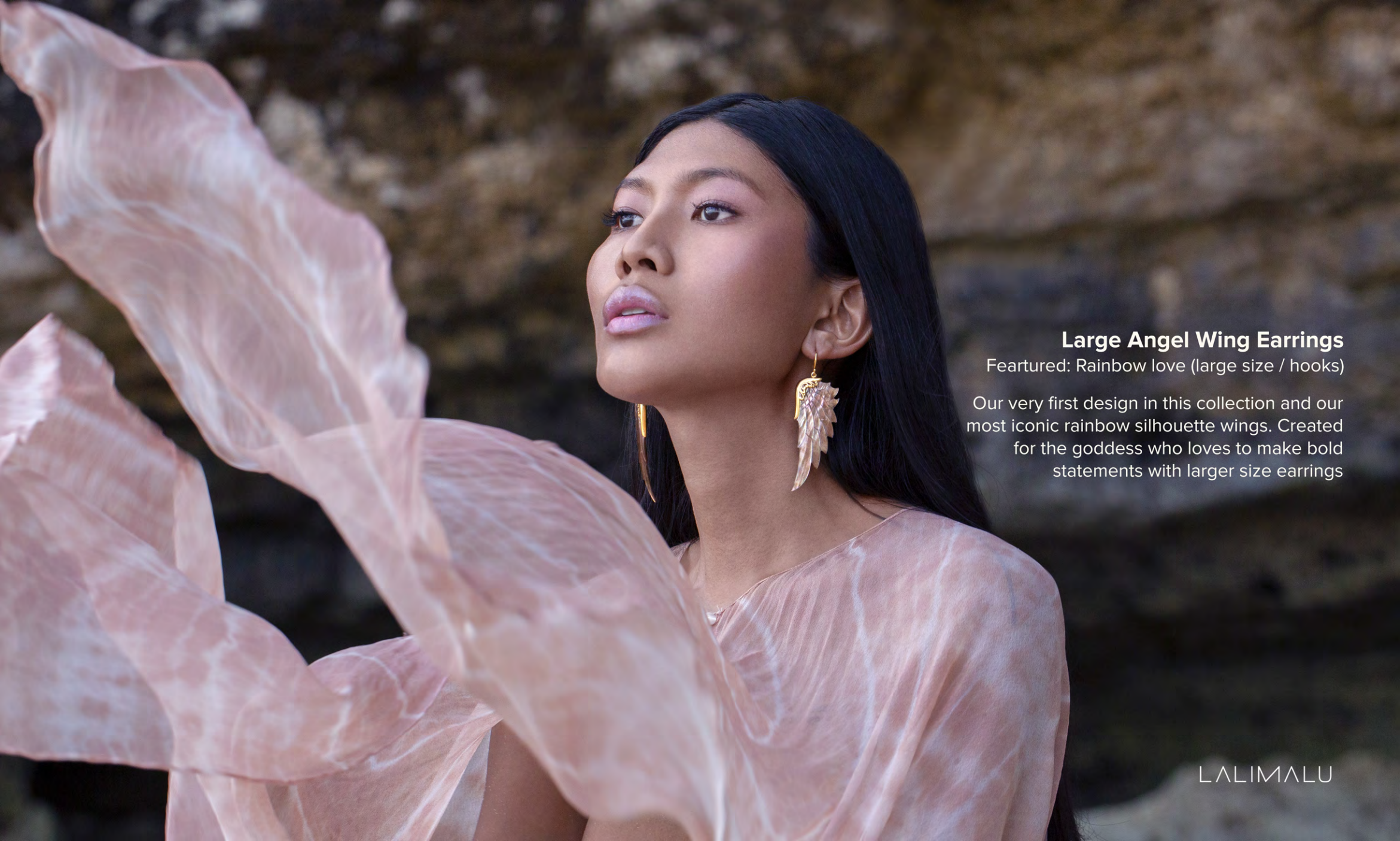
Opal Wonder Rose - Small



Rainbow Love - Small



Opal Wonder Silver - Small



Large Angel Wing Earrings

Featured: Rainbow love (large size / hooks)

Our very first design in this collection and our most iconic rainbow silhouette wings. Created for the goddess who loves to make bold statements with larger size earrings

Large Angel Wing Earrings: Hooks

For a large take on our iconic silhouette, available in 9 variations of color and precious metal setting.

Size: 7.5 cm / 2.95 inches from ear hook



Purist Rose - Large wings with rose gold settings



Purist Rose - Large



Opal Wonder Rose - Large



Opal Wonder Silver - Large



Rainbow Rose - Large



Black Rose - Large



Dark Angel - Large



Rainbow Love - Large



Opal Wonder Gold - Large



Extra Large Angel Wing Earrings

Featured: Opal Wonder Silver (Extra large / hooks)

These Opal Wonders are our largest wings in the collection and truly a bold statement pair in opal hues for any occasion. Only available in this style.

Size: 8.7 cm / 3.4 inches from ear hook





Opal Wonder Silver Studs



Opal Wonder Gold



Purist Gold Studs

Small Angel Wing Studs

For a petite take on our iconic silhouette, a classic set with delicate details in a studded style winged earring.

Size: 7.5 cm / 2.95 inches from ear hook



Rainbow Rose Studs

Star studs

A new addition to our collection. Available in two styles. These crystal zircon stars are combined with our petite wing, then fitted with sterling silver detail and dipped in either 24 karat gold or micron rose gold with an additional nano coating for a longer lasting finish.

Size: 5 cm / 2 inches from ear hook



Black Rose Star Studs



LALIMALU

Purist Gold Star Studs

Angel Wing Necklaces

Our classic angel wing necklace, available in 9 variations of color and precious metal setting.

Size : Chain: 45 cm / 17.7 inches

Pendant: 5 cm / 2 inches



Angelica Rainbow Gold - small wing necklace



Angelica Rainbow Rose



Opal Wonder Silver



Angelica Rainbow Gold



Opal Wonder Rose



Angelica Black Rose



Angel Gabriel



Angelica White Silver



Angelica White Rose



Angelica White Gold



LALIMALU

Angelic Luxury

The Pegasus wing is the mythical centrepiece of our collection. Created for the goddess, the Pegasus symbolises power, stability, balance and grace.

The Pegasus Wing Necklace

Designed for the most special of moments and ceremonial affairs.

Our signature opal abalone shells are hand carved for over 10 hours, set in sterling silver and adorned with a powerful healing African crystal quartz teardrop pendant.

Available in solid sterling silver, with 3 micron rose gold plating or 24 karat gold plating.

Pendant: 7 cm / 2.95 inches



Sterling Silver Pegasus Wing Necklace (new-edition)

Rose Gold Pegasus Wing Necklace (new-edition)



LALIMALU



Wings to uplift

The pegasus face mask, created to uplift us all towards higher vibrations.





Pegasus Wing Face Mask

Inspired by the mythical and immortal winged horse from ancient Greece, created to symbolize liberty, boldness and freedom of expression, this luxury piece is hand made in Bali with vegan suede inner lining for maximum comfort and is embedded with 36 Swarovski crystals.

The mask is breathable and adjustable and available in gold, rose gold, black and magenta, and presented in a luxury handmade box with a satin lining.

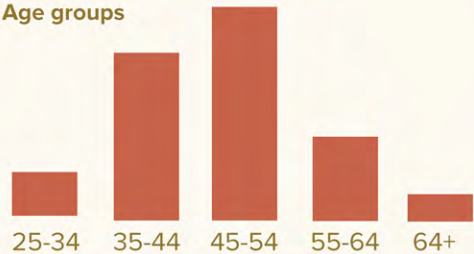


The Lalimalu Customer

Interests

meditation / yoga / breathwork / self improvement / green living / animal welfare / astrology / numerology / gender equality / racial equality / giving back

Age groups



Top 5 sales locations

- USA
- Australia
- Germany
- UK
- Russia





Become a wholesale partner

Visit our wholesale portal to apply
lalimalu.com/wholesale/apply

Alternatively email us we'd love to hear from you
info@lalimalu.com