

TECHNICAL DATA SHEET

MADDIE grey Low ESD S1P No. 749501


Sz. 35 - 42



LABELLING ACCORDING TO STANDARD

Standard for safety footwear EN ISO 20345 S1P	Basic requirement for S1P: A Antistatic shoe - E Energy absorption in the heel - FO Fuel resistance - P Penetration resistance - Closed heel area
Additional requirements	SRC Slip resistance: Slip resistant on floors of ceramic tiles with a sodium lauryl sulfate (SLS) solution and on steel floors with glycerol. When it comes to slip resistance as defined by EN ISO 20345, SRC signifies the best possible rating a safety shoe can reach.



FORM







Ladies' safety shoe 	Form A - in size 38, the upper height must not exceed 10.4 cm.
--	--

AREAS OF APPLICATION

Areas of application	<p>Dry work areas Industry, storage, transport, assembly etc. Areas where there is a risk of penetration from pointed and sharp objects (S1P)</p> <p>Areas where there is a risk of electrostatic discharge (ESDS/ESD)</p> <p>Workplaces on hard Undergrounds: The revolutionary Infinergy® sole core cushions impacts and provides for a rebound effect when the compressive impulse subsides - for more energy in every step.</p>
----------------------	---

FEATURES

ESD equipment	Thanks to its excellent discharge capability, the shoe is suitable for work in ESD sensitive or electrostatically protected areas (EPA). The shoes comply to the standard 61340-5-1.	
Certification in accordance with DGUV rule 112-191	<ul style="list-style-type: none"> • Certified for orthopaedic inserts 	

FEATURES	
Padded upper edge	<ul style="list-style-type: none"> • Excellent wearing comfort: the padded upper edge protects the Achilles tendon.
Padded tongue	<ul style="list-style-type: none"> • Excellent wearing comfort: The tongue prevents pressure marks.
Reflective material	<ul style="list-style-type: none"> • Good visibility in the dark 
Heel loop	<ul style="list-style-type: none"> • Quicker into the shoe: The heel loop makes it easier to get inside the shoe
Sole core made of Infinergy® by BASF 	<p>The sole core consists of expanded, thermoplastic polyurethane in the form of oval foam beads. These stick together and are very light and elastic. This revolutionary technology cushions the impact and bounces back extremely well on pressure, so that the energy can be returned to the wearer. Even under low temperatures of -20 °C, the core maintains its high elasticity.</p> 
Leather-free equipment	<ul style="list-style-type: none"> • Suitable for persons allergic to leather
Ergonomic Product IGR certification	<p>The IGR quality seal (Interessengemeinschaft der Rückenschullehrer/-innen e.V. / Association of back specialists) confirms the highly praised features and practical functionality of the tested products. The IGR certification attests the degree of the product's customisability to the physical characteristics of the test person. In accordance with DIN 33419 / EN ISO 15537, the product's usability and ergonomics were tested. Products recommended by IGR e.V. bear the title "Ergonomic Product".</p> 
Winner Plus X Award	<p>The independent jury for the Plus X Award, the Innovation Prize for Technology, Spot, and Lifestyle, grants a total of seven seals of approval to brands that offer products with a competitive edge in terms of quality and innovation. ELTEN has always seen itself as an innovative business at the cutting edge of technology.</p> 
100% Vegan	<p>Vegan manufacturing – Thanks to its leather-free features and the fact that no animal products of any kind are used, this shoe is suitable for people who live vegan.</p> 
UPPER MATERIAL	
Microfibre	<ul style="list-style-type: none"> • Synthetic material • Particularly soft • Retains its shape • Tear-resistant • Quick drying • Abrasion-resistant and light
Textile material	<ul style="list-style-type: none"> • Areas of application S1 • Synthetic material • Retains its shape • Tear-resistant • Quick drying • Abrasion resistant and light

LINING

Breathable fabric lining	<ul style="list-style-type: none">• Climate-regulating• Good ventilation• Skin-friendly• High absorption and emission of moisture
Heel pocket lining	<ul style="list-style-type: none">• The abrasion-resistant microfibre material is particularly sturdy and provides for a pleasant wearing comfort.

TOE PROTECTION CAP

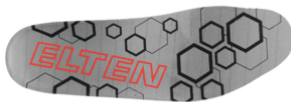
Steel toe cap



- Protection against impacts of min. 200 joules and pressure loading of min. 15 kN
- Permanent edge coverage for cushioning
- Ergonomically shaped
- Comfortable toe room
- Good coverage of the little toe area

INLAY SOLE

Full-length inlay sole
SPORTIVE ESD



- ESD EQUIPMENT: Protection against electrostatic discharge (ESD). The full-length, exchangeable inlay sole is conductive and designed for the use in ESD safety footwear according to the standards DIN EN ISO 20345 and DIN EN 61340-5-1.
- The full-length, exchangeable inlay sole provides the highest possible comfort in safety shoes.
- Improvement of the shoe climate thanks to the PU foam's open cell structure. So the foot is always kept comfortably dry.
- The extreme softness of the PU foam absorbs shocks on impact and increases walking comfort.

PENETRATION RESISTANCE

Metal-free penetration
protection

The textile midsole complies with the penetration safety standard EN 12568 and furthermore fulfils the additional requirements for penetration protection in accordance with EN ISO 20344 / 20345. The light and flexible material enables an increased elasticity of the shoe, which can particularly be recognized when working on uneven grounds or on your knees.

The textile variant offers 100 % foot coverage compared to steel midsoles (foot coverage 85 % due to limits in the shoe manufacturing process). Being 100 % metal-free and antimagnetic, this equipment is used as penetration protection in safety shoes.

OUTSOLE

MAXXIMO extended wedge double-density sole



- Excellent slip resistance
- Antistatic

Outsole: TPU (thermoplastic polyurethane)

- Colour: lightgrey
- Profile depth: 3.5 mm
- Particularly abrasion-resistant
- Heat-resistant to approx. 130°C
- Flexible at cold temperatures to approx. -30°C
- Oil and fuel resistant

Midsole: PU (polyurethane) with a core made of Infinergy® by BASF

- The soft PU core provides a good impact absorption and high wearing comfort
- The core made of Infinergy® provides a very good cushioning with rebound effect