

DONGO

Design Studio Segers

DONGO MODULAR SOFA

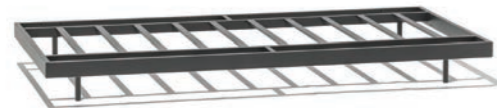
Set-ups can be designed using the following componets.



ONE-SEATER FRAME
Powder coated stainless steel

w89 d89 h18 cm | 14,1 kg

REF: DOF1
673 EUR



TWO-SEATER FRAME
Powder coated stainless steel

w178 d89 h18 cm | 24 kg

REF: DOF2
1 032 EUR



THREE-SEATER FRAME
Powder coated stainless steel

w267 d89 h18 cm | 34,5 kg

REF: DOF3
1 410 EUR



POUF ELEMENT
Quick-dry foam cushion/fabric

w91 d91 h22 cm | 7,5 kg

Cat.A fabric	Cat.B fabric
REF: DOC0-A 778 EUR	REF: DOC0-B 925 EUR



MIDDLE ELEMENT
Quick-dry foam cushion/fabric
Comfort cushion included in the price.

w91 d91 h47 cm | 13 kg

Cat.A fabric	Cat.B fabric
REF: DOC1-A 1 579 EUR	REF: DOC1-B 2 019 EUR



CORNER ELEMENT
Quick-dry foam cushion/fabric
Comfort cushion included in the price.

w91 d91 h47 cm | 16,4 kg

Cat.A fabric	Cat.B fabric
REF: DOC2-A 2 070 EUR	REF: DOC2-B 2 412 EUR



INTEGRATED TABLE TOP
6 mm ceramic table top
Includes ceramic plate and connect set, without frame.

w90 d90 h0,6 cm | 12,5 kg

REF: DOT90-CER
984 EUR



ADD-ON TABLE
Powder coated stainless steel/6 mm ceramic table top
Including frame, ceramic plate and removable legs.
Possible to mount in the middle or at the end of a set-up.

w45 d90 h18 cm | 14 kg

REF: DOT45-CER
960 EUR



POUF
Powder coated stainless steel/quick-dry foam cushion/fabric

w93 d93 h40 cm | 22,1 kg

Cat.A fabric	Cat.B fabric
REF: DOP-A 1 451 EUR	REF: DOP-B 1 598 EUR



CLUB CHAIR
Powder coated stainless steel/quick-dry foam cushion/fabric
Comfort cushion included in the price.

w91 d91 h65 cm | 36 kg

Cat.A fabric	Cat.B fabric
REF: DOA-A 2 777 EUR	REF: DOA-B 3 199 EUR

Protective cover
REF: CP-DOA
290 EUR

SELECTED EXAMPLES OF DONGO SET-UPS

DECO CUSHIONS



Cat.A fabric	Cat.B fabric	Cat.C fabric	Cat.D fabric
w40 h40 cm REF: CS40-A 89 EUR	w40 h40 cm REF: CS40-B 124 EUR	w40 h40 cm REF: CS40-C 135 EUR	w40 h40 cm REF: CS40-D 149 EUR
w60 h40 cm REF: CS46-A 112 EUR	w60 h40 cm REF: CS46-B 158 EUR	w60 h40 cm REF: CS46-C 179 EUR	w60 h40 cm REF: CS46-D 199 EUR

DONGO COFFEE TABLES

Powder coated stainless steel/6 mm ceramic table top



Ø40 h47cm | 3,9 kg

REF: DOTR40-47CER
899 EUR



w40 d40 h47 cm | 5,5 kg

REF: DOT404-47CER
799 EUR

w80 d80 h30 cm | 13,7 kg

REF: DOT808-30CER
1 199 EUR

w80 d80 h20 cm | 13,3 kg

REF: DOT808-20CER
1 199 EUR

w100 d100 h30 cm | 19,7 kg

REF: DOT101-30CER
1 399 EUR

w100 d100 h20 cm | 19,3 kg

REF: DOT101-20CER
1 399 EUR

w90 d50 h30 cm | 10,36 kg

REF: DOT905-30CER
849 EUR

w120 d50 h30 cm | 13,7 kg

REF: DOT1205-30CER
979 EUR

w150 d50 h30 cm | 16,7 kg

REF: DOT1505-30CER
999 EUR

w150 d50 h20 cm | 16,2 kg

REF: DOT1505-20CER
999 EUR

w150 d100 h30 cm | 30 kg

REF: DOT1501-30CER
1 999 EUR

w150 d100 h20 cm | 29,6 kg

REF: DOT1501-20CER
1 999 EUR

Note: All set-ups can be mirrored. Prices include frames, seating, armrest, backrest and comfort cushions, connection pieces and ceramic table tops where applicable. Prices do not include deco cushions and accessories. Protective polyester covers are optional, aimed to provide additional protection for winter months.



SET-UP A

Powder coated stainless steel/quick-dry foam cushion/fabric

w274 d93 h65 cm

Cat.A fabric

Cat.B fabric

REF: DO-setA-A
7 129 EUR

REF: DO-setA-B
8 253 EUR

Protective cover
REF: CP-DO-setA
551 EUR



SET-UP B

Powder coated stainless steel/quick-dry foam cushion/fabric /6mm ceramic

w361 d93 h65 cm

Cat.A fabric

Cat.B fabric

REF: DO-setB-A
8 295 EUR

REF: DO-setB-B
9 517 EUR

Protective cover
REF: CP-DO-setB
690 EUR



SET-UP C

Powder coated stainless steel/quick-dry foam cushion/fabric

w274 d182 h65 cm

Category A fabric

Category B fabric

REF: DO-setC-A
8 580 EUR

REF: DO-setC-B
9 851 EUR

Protective cover
REF: CP-DO-setC
690 EUR



SET-UP D

Powder coated stainless steel/quick-dry foam cushion/fabric

w362 d184 h65 cm

Cat.A fabric

Cat.B fabric

REF: DO-setD-A
9 226 EUR

REF: DO-setD-B
10 742 EUR

Protective cover
REF: CP-DO-setD
889 EUR



SET-UP E
Powder coated stainless steel/quick-dry foam cushion/fabric

w363 d93 h65 cm

Cat.A fabric	Cat.B fabric
REF: DO-setE-A 9 362 EUR	REF: DO-setE-B 10 926 EUR

Protective cover
REF: CP-DO-setE
790 EUR



SET-UP F
Powder coated stainless steel/quick-dry foam cushion/fabric
/6mm ceramic

w361 d184 h65 cm

Cat.A fabric	Cat.B fabric
REF: DO-setF-A 9 432 EUR	REF: DO-setF-B 10 801 EUR

Protective cover
REF: CP-DO-setF
889 EUR



SET-UP G
Powder coated stainless steel/quick-dry foam cushion/fabric
/6mm ceramic

w448 d93 h65 cm

Cat.A fabric	Cat.B fabric
REF: DO-setG-A 9 499 EUR	REF: DO-setG-B 10 966 EUR

Protective cover
REF: CP-DO-setG
889 EUR



SET-UP H
Powder coated stainless steel/quick-dry foam cushion/fabric
/6mm ceramic

w274 d227 h65 cm

Cat.A fabric	Cat.B fabric
REF: DO-setH-A 10 341 EUR	REF: DO-setH-B 11 905 EUR

Protective cover
REF: CP-DO-setH
889 EUR



SET-UP I
Powder coated stainless steel/quick-dry foam cushion/fabric

w363 d184 h65 cm

Cat.A fabric	Cat.B fabric
REF: DO-setI-A 10 518 EUR	REF: DO-setI-B 12 229 EUR

Protective cover
REF: CP-DO-setI
950 EUR



SET-UP J
Powder coated stainless steel/quick-dry foam cushion/fabric

w274 d273 h65 cm

Cat.A fabric	Cat.B fabric
REF: DO-setJ-A 10 518 EUR	REF: DO-setJ-B 12 229 EUR

Protective cover
REF: CP-DO-setJ
950 EUR



SET-UP K
Powder coated stainless steel/quick-dry foam cushion/fabric

w274 d274 h65 cm

Cat.A fabric	Cat.B fabric
REF: DO-setK-A 11 810 EUR	REF: DO-setK-B 13 716 EUR

Protective cover
REF: CP-DO-setK
950 EUR



SET-UP L
Powder coated stainless steel/quick-dry foam cushion/fabric

w363 d273 h65 cm

Cat.A fabric	Cat.B fabric
REF: DO-setL-A 12 475 EUR	REF: DO-setL-B 14 626 EUR

Protective cover
REF: CP-DO-setL
1 250 EUR



SET-UP M
Powder coated stainless steel/quick-dry foam cushion/fabric /6mm ceramic

w361 d274 h65 cm

Cat.A fabric	Cat.B fabric
REF: DO-setM-A 12 681 EUR	REF: DO-setM-B 14 685 EUR

Protective cover
REF: CP-DO-setM
1 250 EUR



SET-UP Q
Powder coated stainless steel/quick-dry foam cushion/fabric/6mm ceramic

w451 d361 h65 cm

Cat.A fabric	Cat.B fabric
REF: DO-setQ-A 15 579 EUR	REF: DO-setQ-B 18 268 EUR

Protective cover
REF: CP-DO-setQ
1 590 EUR



SET-UP N
Powder coated stainless steel/quick-dry foam cushion/fabric

w363 d274 h65 cm

Cat.A fabric	Cat.B fabric
REF: DO-setN-A 13 767 EUR	REF: DO-setN-B 16 113 EUR

Protective cover
REF: CP-DO-setN
1 250 EUR



SET-UP R
Powder coated stainless steel/quick-dry foam cushion/fabric/6mm ceramic

w448 d185 h65 cm

Cat.A fabric	Cat.B fabric
REF: DO-setR-A 15 893 EUR	REF: DO-setR-B 18 582 EUR

Protective cover
REF: CP-DO-setR
1 590 EUR



SET-UP O
Powder coated stainless steel/quick-dry foam cushion/fabric/6mm ceramic

w363 d272 h65 cm

Cat.A fabric	Cat.B fabric
REF: DO-setO-A 14 132 EUR	REF: DO-setO-B 16 283 EUR

Protective cover
REF: CP-DO-setO
1 450 EUR



SET-UP S
Powder coated stainless steel/quick-dry foam cushion/fabric/6mm ceramic

w453 d361 h65 cm

Cat.A fabric	Cat.B fabric
REF: DO-setS-A 19 684 EUR	REF: DO-setS-B 22 715 EUR

Protective cover
REF: CP-DO-setS
1 890 EUR



SET-UP P
Powder coated stainless steel/quick-dry foam cushion/fabric/6mm ceramic

w453 d273 h65 cm

Cat.A fabric	Cat.B fabric
REF: DO-setP-A 15 269 EUR	REF: DO-setP-B 17 567 EUR

Protective cover
REF: CP-DO-setP
1 590 EUR



SET-UP T
Powder coated stainless steel/quick-dry foam cushion/fabric/6mm ceramic

w450 d361 h65 cm

Cat.A fabric	Cat.B fabric
REF: DO-setT-A 22 021 EUR	REF: DO-setT-B 25 785 EUR

Protective cover
REF: CP-DO-setT
1 890 EUR

COLOUR OPTIONS

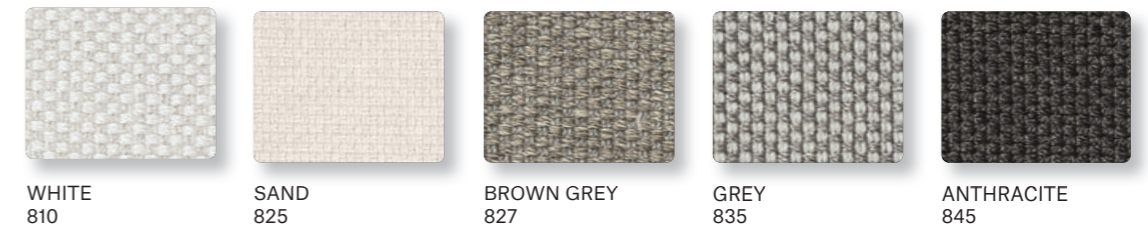
FABRIC CATEGORY A | CREVIN VITA



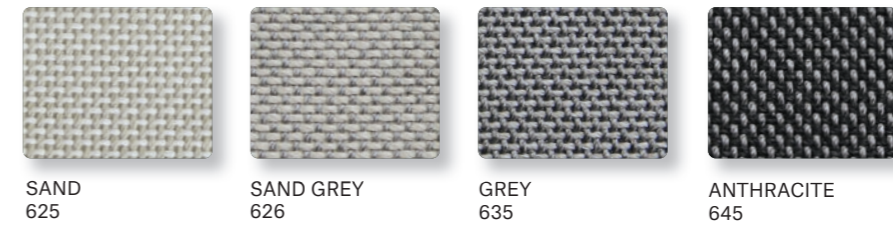
FABRIC CATEGORY B | CREVIN BRISA



FABRIC CATEGORY B | CREVIN BORA BORA



FABRIC CATEGORY B | LIMONTA NEW HUBBLE



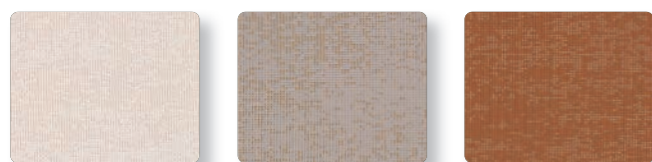
FABRIC CATEGORY B | LIMONTA GUN



FABRIC CATEGORY C | KVADRAT PATIO

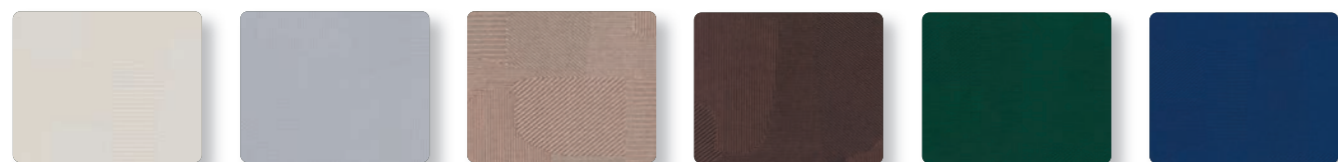


FABRIC CATEGORY D | KVADRAT ATRIUM



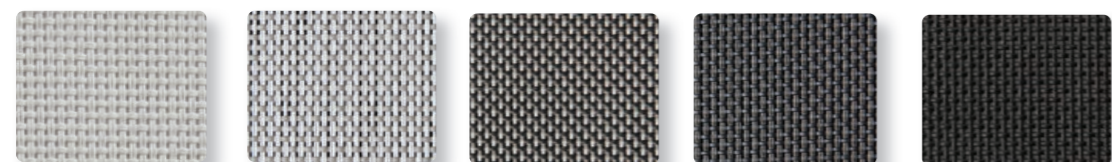
OYSTER WHITE 015 BEIGE 025 COPPER BROWN 020

FABRIC CATEGORY D | KVADRAT TERO



SAND 026 LIGHT GREY 035 ROSE 012 BRONZE 030 GREEN 080 BLUE 079

TECHNICAL FABRIC



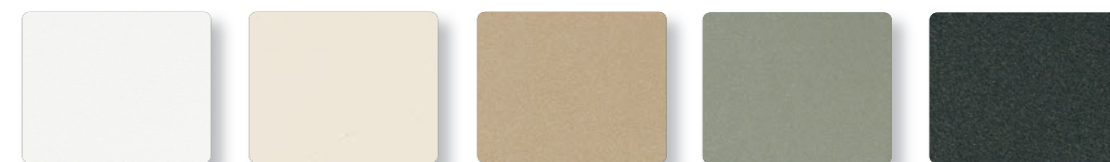
WHITE 5100 WHITE GREY 5400 GREY 5350 ANTHRACITE 5450 BLACK 5500

OUTDOOR RUGS



LIGHT GREY 35 ANTHRACITE 45

POWDER COATINGS



WHITE 110 OYSTER WHITE 115 LATTE 125 CEMENT GREEN 190 DARK GREEN 180



BROWN 135 RUST BROWN 130 COPPER BROWN 120 SALMON BEIGE 112 DARK BLUE 171



SILK GREY 104 GREY 105 ANTHRACITE 145 BLACK 150 TRAFFIC YELLOW 123

CERAMIC



WHITE (6 mm)
210



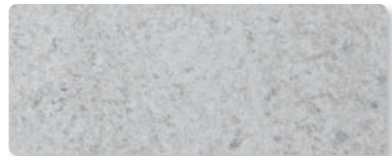
PEARL (6 mm)
212



FUME (6 mm)
214



OYSTER STONE (6, 12 mm)
209



PEARL STONE (6, 12 mm)
213



GREY STONE (6, 12 mm)
215



ANTHRACITE STONE (6, 12 mm)
217

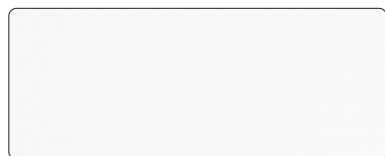


OXIDO BLACK (6, 12 mm)
218

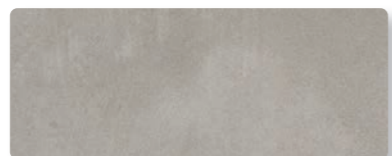


BLACK (6 mm)
216

HPL



WHITE
310



GREY
335



DARK GREY
336

PRODUCT CARE

POWDER COATED STAINLESS STEEL OR ALUMINIUM FRAMES

Clean the frame with a solution of warm water and a mild soap. Avoid the use of abrasive cleaners. Corrective paint for small scratchings is available to order in all colours.

Corrective paint (12 ml)

REF: CRP

47 EUR

BRUSHED STAINLESS STEEL FRAMES

Rinse the frame regularly with warm water. Clean with a spray for brushed stainless steel.

Spray Perfect Inox for brushed stainless steel (500ml)

REF: CL-IN

63 EUR

When placing the furniture in brushed stainless steel in location close to the sea shore or covered chlored swimming pools an extra anti-corrosion treatment is recommended. The high level of salt reduces the resistance to corrosion of stainless steel. The disregard of this recommendation voids the guarantee. An extra anti-corrosion treatment supplement is +10%. This treatment is not needed for powdercoated stainless steel or aluminium.

CERAMIC

Ceramics has no special maintenance requirements. To clean the table top surface use warm water and a neutral detergent. For persistent stains, you may use normal household detergents, including products to eliminate grease or lime scale.

HPL

Clean the table top surface with pure warm water or a solution of warm water and mild soap using a soft sponge or cloth. If stains cannot be removed use common household cleaners without abrasives. For persistent stains, you may use organic solvents such as acetone or alcohol. Remember to wash the surface with pure water in the end to avoid any residue of detergents.

FABRICS

Valid for all fabrics manufacturers (Crevin, Kvadrat, Limonta)

Use soap and water for cleaning stains. Upholstery can be machine-washed at 30° using a mild laundry detergent and a gentle cycle.

Crevin



Kvadrat



Limonta



OUTDOOR RUGS

Rugs can be cleaned with vacuum cleaner without brushes. For a more thorough cleaning use a solution of cold water and a mild soap. Avoid the use of abrasive brushes, bleaching agents or solvents, professional dry cleaning and high pressure washers.

BATYLINE

Clean with warm soap water or use a special Batyline cleaner. Spray the cleaner on the surface, leave for 2 to 3 minutes, use a soft brittle brush and brush the surface repeatedly in a circular motion. Let stand for one minute and wash with plenty of water to avoid residue drying on the surface and wipe with a dry cloth.

Spray Serge Ferrari for Batyline® (500ml)

REF: CL-SF

54 EUR

All prices are in EUR including VAT.

Prices are valid from 1.11.2023.

We reserve the right to change the content in this publication without prior notice.

Please visit our web at www.todus.cz/downloads for 2D and 3D models, photos in HR and logistics details.

Manufactured in the Czech Republic from European raw materials.

H + H výroba a obchod spol. s r.o.
Hviezdoslavova 2549/19
Opava 746 01
Czech Republic

T: +42 (0) 553 613 423
info@todus.cz
www.todus.cz

Webpage



Product videos



