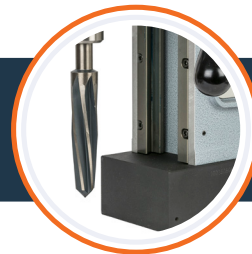


Compatible with the largest CarbideMax XL broach cutters



Technical Specifications

CUTTER SIZE RANGE	12-200mm
MAX CUTTER LENGTH	200mm
TWIST DRILL RANGE	12-50mm
TAPPING RANGE	N/A
COUNTERSINKING	80mm
REAMING	39mm
LENGTH	480mm
WIDTH INC HANDLES	260mm
HEIGHT	660-840mm
STROKE	280mm
WEIGHT	53kg
MAGNET SIZE (L x W)	330x110mm
MAGNETIC FORCE	3900kg
MOTOR POWER	3800W
SPEED RPM (No Load)	1) 70-150 2)170-410 RPM
SPINDLE	MT4
ARBOR	Weldon XL 32mm 1 1/4"
COOLANT SYSTEM	Gravity Oil Fed
WARRANTY	2 Year (When registered)



The Ultimate Magnetic Drill for the largest possible broaching, drilling and Countersinking tasks. Fantastic power and magnetic adhesion make this Mag Drill a world beater for heavy duty engineering tasks.

- Designed for heavy portable engineering works
- Huge Power 3800 Watt Motor
- High precision Twin column slideway system
- Up to 200mm Broach Capacity

Each machine comes in a metal, heavy duty, wheeled case with MT4 broaching arbor, hex keys, restraint strap, and internal coolant system.

HUGE POWER AND MAGNET HOLD TO MAKE LIGHT WORK OF HEAVY ENGINEERING TASKS

Part No	Contents
803095-0001	HMT MAX200 Magnet Drill Kit - 110v
803095-0002	HMT MAX200 Magnet Drill Kit - 230v