

HMT MAX200T Magnet Drill

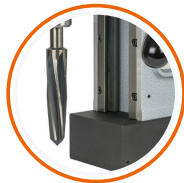
NEW

The HMT MAX200T offers the world's largest capacity for portable drilling, tapping and countersinking. Designed for heavy duty, industrial application, it tackles the most challenging metalworking tasks with its 2850W, high torque, variable speed, reversible motor.

Technical Specifications

CUTTER SIZE RANGE	12-200mm
MAX CUTTER LENGTH	200mm
MAX TWIST DRILL	56mm
TAPPING RANGE	M52
COUNTERSINKING	110mm
REAMING	56mm
LENGTH	455mm
WIDTH INC HANDLES	280mm
HEIGHT	730-955mm
STROKE	330mm

WEIGHT	52kg
MAGNET SIZE	295x140x70mm
MAGNETIC FORCE	2700kg
POWER CONSUMPTION	2,850W
SPEED RPM (No Load)	40-60//90-130// 170-240//380-545
SPINDLE	MT5
ARBOR	31.75mm (1-1/4") Weldon
COOLANT SYSTEM	Included
WARRANTY	1 Year



803096-110

HMT MAX200T Magnet Drill 110v

803096-230

HMT MAX200T Magnet Drill 230v